

Well Name: NATANI	Well Location: T21N / R6W / SEC 11 / SESE / 36.059673 / -107.43447	County or Parish/State: SANDOVAL / NM
Well Number: 1	Type of Well: CONVENTIONAL GAS WELL	Allottee or Tribe Name:
Lease Number: NMNM25804	Unit or CA Name:	Unit or CA Number:
US Well Number: 300432042900S1	Well Status: Gas Well Shut In	Operator: M & M PRODUCTION & OPERATION

Subsequent Report

Sundry ID: 2775533

Type of Submission: Subsequent Report	Type of Action: Plug and Abandonment
Date Sundry Submitted: 02/16/2024	Time Sundry Submitted: 02:34
Date Operation Actually Began: 02/16/2024	

Actual Procedure: DJR Operating, LLC completed P&A operations on the said M&M Production Operation well. The plugging of this well was done as the record title owner of the lease per request of the BLM. Please see attached EOW summary, wellbore diagram and well marker pictures.

SR Attachments

Actual Procedure

SR_ABD_001_3004320429_20240216143344.pdf

BLM Point of Contact

BLM POC Name: KENNETH G RENNICK	BLM POC Title: Petroleum Engineer
BLM POC Phone: 5055647742	BLM POC Email Address: krennick@blm.gov
Disposition: Accepted	Disposition Date: 02/16/2024
Signature: Kenneth Rennick	

Form 3160-5
(June 2019)

UNITED STATES
DEPARTMENT OF THE INTERIOR
BUREAU OF LAND MANAGEMENT

FORM APPROVED OMB
No. 1004-0137 Expires:
December 31, 2024

SUNDRY NOTICES AND REPORTS ON WELLS
***Do not use this form for proposals to drill or to re-enter an
abandoned well. Use Form 3160-3 (APD) for such proposals.***

5. Lease Serial No. **NMNM25804**
6. If Indian, Allottee or Tribe Name

Received

FEB 16 2024

SUBMIT IN TRIPLICATE - Other instructions on page 2

1. Type of Well

☐ Oil Well ☒ Gas Well ☐ Other

2. Name of Operator **DJR Operating, LLC / M&M Production & Operation**

7. If Unit of CA/Agreement, Name and/or No

8. Well Name and No **Natani 001**

3a. Address **200 Energy Court
Farmington, NM 87401**

3b. Phone No. (include area code)

9. API Well No **30-043-20429**

10. Field and Pool or Exploratory Area
Rusty Chacra

4. Location of Well (Footage, Sec., T., R., M., or Survey Description)
930' FSL x 1160' FEL / P-11-21N-06W / 36.059669 -107.434448

11. Country or Parish, State
Sandoval County, NM

12. CHECK THE APPROPRIATE BOX(ES) TO INDICATE NATURE OF NOTICE, REPORT OR OTHER DATA

TYPE OF SUBMISSION	TYPE OF ACTION				
<input type="checkbox"/> Notice of Intent	<input type="checkbox"/> Acidize	<input type="checkbox"/> Deepen	<input type="checkbox"/> Production (Start/Resume)	<input type="checkbox"/> Water Shut-Off	
<input checked="" type="checkbox"/> Subsequent Report	<input type="checkbox"/> Alter Casing	<input type="checkbox"/> Hydraulic Fracturing	<input type="checkbox"/> Reclamation	<input type="checkbox"/> Well Integrity	
<input type="checkbox"/> Final Abandonment Notice	<input type="checkbox"/> Casing Repair	<input type="checkbox"/> New Construction	<input type="checkbox"/> Recomplete	<input type="checkbox"/> Other	
	<input type="checkbox"/> Change Plans	<input checked="" type="checkbox"/> Plug and Abandon	<input type="checkbox"/> Temporarily Abandon		
	<input type="checkbox"/> Convert to Injection	<input type="checkbox"/> Plug Back	<input type="checkbox"/> Water Disposal		

13. Describe Proposed or Completed Operation: Clearly state all pertinent details, including estimated starting date of any proposed work and approximate duration thereof. If the proposal is to deepen directionally or recomplete horizontally, give subsurface locations and measured and true vertical depths of all pertinent markers and zones. Attach the Bond under which the work will be performed or provide the Bond No. on file with BLM/BIA. Required subsequent reports must be filed within 30 days following completion of the involved operations. If the operation results in a multiple completion or recompletion in a new interval, a Form 3160-4 must be filed once testing has been completed. Final Abandonment Notices must be filed only after all requirements, including reclamation, have been completed and the operator has determined that the site is ready for final inspection.)

DJR Operating, LLC completed P&A operations on the said M&M Production Operation well. The plugging of this well was done as the record title owner of the lease per the request of the BLM. Please see attached EOW summary, wellbore diagram and well marker pictures.

14. I hereby certify that the foregoing is true and correct. Name (Printed/Typed)

LINDSEY LAIN

REGULATORY ANALYST

Title

Signature

Lindsay Lain

Date

2-15-24

THE SPACE FOR FEDERAL OR STATE OFFICE USE

Approved by

Title

Date

Conditions of approval, if any, are attached. Approval of this notice does not warrant or certify that the applicant holds legal or equitable title to those rights in the subject lease which would entitle the applicant to conduct operations thereon.

Office

Title 18 U.S.C. Section 1001 and Title 43 U.S.C. Section 1212, make it a crime for any person knowingly and willfully to make to any department or agency of the United States any false, fictitious or fraudulent statements or representations as to any matter within its jurisdiction.

(Instructions on page 2)

DJR Operating, LLC
P&A End of Well Report

Natani 1

API # 30-043-20429

SE/SE, Unit P, Sec. 11, T21N, R6W

Sandoval County, NM

2/5/2024:

SICP = 13 psi, SITP = 3 psi, SIBHP = 0 psi. NDWH, NUBOP. Pulled tubing hanger and laid down 50 joints of 2-3/8" tubing. PU and TIH to 2460' with 5-1/2" string mill and 4-7/8" mill on 2-3/8" workstring. TOOH. PU and TIH with 2-3/8" tag sub on 2-3/8" workstring to 2460'. Loaded hole. PLUG 1 (Mesa Verde): Mixed and pumped inside plug of 18 sx Class G cement from 2460'. Displaced with fresh water, and SWIFN.

2/6/2024:

SICP = vacuum, SITP = vacuum, SIBHP = 0 psi. TIH and tagged PLUG 1 at 2293'. TOOH. PU and TIH with 5-1/2" CR and set at 1563'. PT tubing to 1000 psi. Good test. Stung out of CR. Loaded hole and PT 5-1/2" casing. Got injection rate of 2 BPM at 300 psi. PT failed. Stung back into CR. PLUG 2 (Chacra perfs): Mixed and pumped 10 sx Class G cement below CR. TOOH with 2-3/8" tubing and setting tool. RU wireline truck. Ran CBL from 1557' to surface. RD wireline truck. PU tagging sub on 2-3/8" tubing, and TIH to 1563'. Discussed CBL results with Ken Christesen (BLM), Kenneth Rennick (BLM), and Monica Kuehling (NMOCD). PLUG 3 (Chacra top): Mixed and pumped 12 sx Class G cement on top of CR. Pulled up to 770'. SWIFN.

2/7/2024:

SICP = vacuum, SITP = vacuum, SIBHP = 0 psi. TIH and tagged PLUG 3 at 1433'. TOOH with tubing and tagging sub. RU wireline truck. RIH with 3-1/8" 3 SPF perf gun and perfed casing at 1214'. POOH and RD wireline truck. PU 5-1/2" CR on tubing and set at 1164'. Stung out of CR, loaded hole, and PT 5-1/2" casing. Got injection rate of 2 BPM at 300 psi. PT failed. Stung back into CR. PLUG 4 (Pictured Cliffs, Fruitland, and Kirtland): Mixed and pumped 101 sx Class G cement; 55 sx outside casing, 6 sx inside casing below CR, stung out of CR and spotted 40 sx on top of CR. LD tubing to 802'. Reverse circulated 10 bbls, and got returns out BH while circulating. SI BH and TOOH with tubing and tagging sub. WOC. TIH with 2-3/8" tubing and tagging sub and tagged PLUG 4 at 897', 3' above Kirtland top. Received BLM and NMOCD approval to pump 100' balanced plug to top off Kirtland formation. PLUG 5 (Kirtland top-off plug): Mixed and pumped 12 sx Class G cement from 897'. Displaced with 3 bbls fresh water, LD tubing to 770' and reverse circulated. TOOH with 2-3/8" tubing and tagging sub. SWIFN.

2/8/2024:

SICP = vacuum, SITP = vacuum, SIBHP = vacuum.

TIH and tagged PLUG 5 at 823'. TOO H with tubing and tagging sub. RU wireline truck. RIH with 3-1/8" 3 SPF perf gun and perfed casing at 701'. POOH with perf gun, and RD wireline truck. PU 5-1/2" CR on 2-3/8" tubing and set at 651'. Stung out of CR, loaded hole, and PT 5-1/2" casing. Got injection rate of 2 BPM at 300 psi. Test failed. Stung back into CR. PLUG 6 (Ojo Alamo): Mixed and pumped 55 sx Class G cement; 31 sx outside casing, 6 sx inside casing below CR, stung out of CR and spotted 18 sx on top of CR. LD tubing to 328', reverse circulated and TOO H with 2-3/8" tubing and setting tool. WOC. TIH and tagged PLUG 6 at 551'. LD 10 joints of tubing, loaded hole, and PT 5-1/2" casing. Test failed, and got circulation up BH. TOO H with tubing and tagging sub. Discussed BH leak with BLM and NMOCD. Decision was made to run a packer and isolate the hole, to ensure that surface casing shoe would have adequate cement coverage. SWIFN.

2/9/2024:

SICP = vacuum, SITP = N/A, SIBHP = vacuum.

PU 5-1/2" tension packer on 2-3/8" tubing and set at 204'. PT casing to 800 psi. Good test. Pumped down 2-3/8" tubing and got circulation up BH. Released packer and reset at 267'. PT casing to 700 psi. Good test. Pumped down 2-3/8" tubing and got circulation up BH. Released packer and reset at 337'. PT casing to 800 psi. Good test. Hole is between 337' and 551'. TOO H with 2-3/8" tubing. RU wireline truck with 3-1/8" 3 SPF perf gun and perfed casing at 270'. POOH and rigged down wireline truck. NDBOP. NUWH. PLUG 7 (Surface casing plug): Mixed and pumped 155 sx Class G cement down 5-1/2 casing and out 8-5/8" surface casing. Circulated good cement to surface. Shut well in and WOC. Tagged TOC at 12' inside 5-1/2" casing. Cut off WH and found TOC inside 8-5/8" casing at surface. Installed dry hole marker. PLUG 7 (Casing and cellar top-off): Topped off casing and WH cellar with 20 sx Class G cement. RD and MOL.

Regulatory representatives: Ken Christesen (BLM), Kenneth Rennick (BLM, by phone), and Monica Kuehling (NMOCD, by phone)

GPS Coordinates: Lat: 36.05970N; Long: 107.43443W

Note: All cement used was Class G mixed at 15.8 ppg yield 1.15 cu. Ft. /sk. Cement volumes were based on inside capacities +50' and outside capacities + 100% excess.



DJR Operating, LLC
As Plugged Wellbore Diagram
Natani 1

API # 30-043-20429
SE/SE, Unit P, Sec 11, T21N, R6W
Sandoval County, NM

GL 6985'
KB 6995'
Spud Date 6/28/1979
Plug Date 2/9/2024

SURF CSG

Hole size 12.25"
Csg Size: 8.625"
Wt: 24#
Grade: K-55
ID: 8.097"
Depth 220'
casing cap ft3/ft: 0.3575
TOC: Circ. cement to surface

FORMATION TOPS

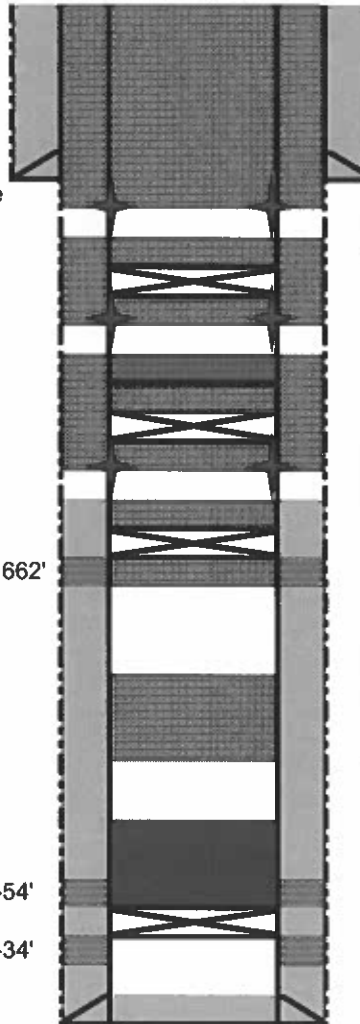
Nacimiento	Surface
Ojo Alamo	651'
Kirtland	900'
Fruitland	1023'
Pictured Cliffs	1164'
Chacra	1563'
Cliff House	2410'
Menefee	2641'
Point Lookout	3506'

PROD CSG

Hole size 7.875"
Csg Size: 5.5"
Wt: 15.5#
Grade: K-55
ID: 4.950"
Depth 3630'
Casing cap ft3/ft: 0.1336
Csg/csg Ann. ft3/ft 0.1926
Csg/OH ft3/ft 0.1733
TOC: 1400' (TS)

Chacra perfs	1580-1662'
Upper Mesa Verde perfs	3044-54'
Lower Mesa Verde perfs	3529-34'

PBTD 4045'
TD 4075'



2/9/24: Ran packer to isolate hole in casing. Located hole between 337' and 551'. PT casing to 800 psi. Good test. Plug 7 (Surface casing shoe and surface): Perfed holes at 270'. Pumped 155 sx cement down 5-1/2" casing. Good cement circulated to surface. Plug 8: Topped off cellar with 20 sx.

2/8/24: Tagged Plug 5 at 823'. Plug 6 (Ojo Alamo): Perfed holes at 701'. Set CR at 651'. Pumped 31 sx outside casing, 6 sx below CR, and 18 sx above CR inside casing. Tagged Plug 6 at 551'.

2/7/24: Tagged Plug 3 at 1433'. Plug 4 (Pictured Cliffs, Fruitland, and Kirtland): Perfed holes at 1214'. Set CR at 1164'. Pumped 55 sx outside casing, 6 sx below CR, and 40 sx above CR inside casing. Tagged Plug 4 at 897'. Plug 5 (Kirtland top-off plug). Spotted 12 sx on top of Plug 4.

2/6/24: Tagged Plug 1 at 2293'. Plug 2 (Chacra perfs): Set CR at 1563'. Pumped 10 sx cement through CR. Ran CBL from 1557' to surface. Plug 3 (Chacra): Pumped inside plug of 12 sx cement above CR.

2/5/24: Plug 1 (Mesa Verde): Set balanced plug of 18 sx from 2460'. WOC.

25 sx plug from 3118-2929' (1979)

5 sx plug on top of CR to 3182' (1979)
Baker Model K CR at 3216'

All cement used was Class G mixed 15.8 ppg, yield 1.15 cu ft/sx
Regulatory representatives: Ken Christesen, BLM on location; Kenneth Rennick, BLM by phone; Monica Kueling, NMOCD, by phone.
GPS Coordinates: Lat: 36.05970N; Long: 107.43443W

District I
1625 N. French Dr., Hobbs, NM 88240
Phone:(575) 393-6161 Fax:(575) 393-0720
District II
811 S. First St., Artesia, NM 88210
Phone:(575) 748-1283 Fax:(575) 748-9720
District III
1000 Rio Brazos Rd., Aztec, NM 87410
Phone:(505) 334-6178 Fax:(505) 334-6170
District IV
1220 S. St Francis Dr., Santa Fe, NM 87505
Phone:(505) 476-3470 Fax:(505) 476-3462

State of New Mexico
Energy, Minerals and Natural Resources
Oil Conservation Division
1220 S. St Francis Dr.
Santa Fe, NM 87505

CONDITIONS

Action 316033

CONDITIONS

Operator: DJR OPERATING, LLC 200 Energy Court Farmington, NM 87401	OGRID: 371838
	Action Number: 316033
	Action Type: [C-103] Sub. Plugging (C-103P)

CONDITIONS

Created By	Condition	Condition Date
mkuehling	well plugged 2/9/2024	3/5/2024