

U.S. Department of the Interior  
BUREAU OF LAND MANAGEMENT

## Sundry Print Report

03/04/2024

Well Name: PET INC	Well Location: T28N / R15W / SEC 35 / NENE / 36.62419 / -108.39729	County or Parish/State: SAN JUAN / NM
Well Number: 5	Type of Well: CONVENTIONAL GAS WELL	Allottee or Tribe Name: SHIPROCK
Lease Number: 14206032015	Unit or CA Name:	Unit or CA Number:
US Well Number: 3004521060	Well Status: Abandoned	Operator: NAVAJO NATION OIL & GAS COMPANY

## Subsequent Report

Sundry ID: 2777576

Type of Submission: Subsequent Report

Type of Action: Plug and Abandonment

Date Sundry Submitted: 03/01/2024

Time Sundry Submitted: 12:35

Date Operation Actually Began: 02/14/2024

Actual Procedure: Navajo Nation Oil &amp; Gas Company plugged and abandoned the subject well on 2/14/2024.

## SR Attachments

Actual Procedure

Pet\_Inc\_5\_PA\_Summary\_WBD\_20240301123503.pdf

<b>Well Name:</b> PET INC	<b>Well Location:</b> T28N / R15W / SEC 35 / NENE / 36.62419 / -108.39729	<b>County or Parish/State:</b> SAN JUAN / NM
<b>Well Number:</b> 5	<b>Type of Well:</b> CONVENTIONAL GAS WELL	<b>Allottee or Tribe Name:</b> SHIPROCK
<b>Lease Number:</b> 14206032015	<b>Unit or CA Name:</b>	<b>Unit or CA Number:</b>
<b>US Well Number:</b> 3004521060	<b>Well Status:</b> Abandoned	<b>Operator:</b> NAVAJO NATION OIL & GAS COMPANY

**Operator**

*I certify that the foregoing is true and correct. Title 18 U.S.C. Section 1001 and Title 43 U.S.C. Section 1212, make it a crime for any person knowingly and willfully to make to any department or agency of the United States any false, fictitious or fraudulent statements or representations as to any matter within its jurisdiction. Electronic submission of Sundry Notices through this system satisfies regulations requiring a*

**Operator Electronic Signature:** ARLEEN SMITH**Signed on:** MAR 01, 2024 12:35 PM**Name:** NAVAJO NATION OIL & GAS COMPANY**Title:** Regulatory Specialist**Street Address:** 332 RD 3100**City:** AZTEC**State:** NM**Phone:** (505) 327-4892**Email address:** ARLEEN@WALSHENG.NET**Field****Representative Name:****Street Address:****City:****State:****Zip:****Phone:****Email address:****BLM Point of Contact****BLM POC Name:** MATTHEW H KADE**BLM POC Title:** Petroleum Engineer**BLM POC Phone:** 5055647736**BLM POC Email Address:** MKADE@BLM.GOV**Disposition:** Accepted**Disposition Date:** 03/04/2024**Signature:** Matthew Kade

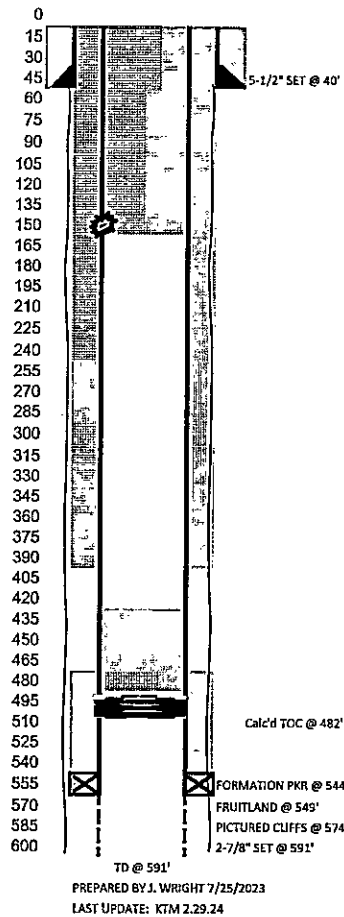
Navajo Nation Oil and Gas				Pet Inc #5		Date Comp: 2/14/2024	
Plug #	Formation	Formation Top	Perfs	CICR Depth	Cement Detail	Cement Depths	Plug Position
1	Fruitland PC	549' 574'	544-591'	492'	Dump Ball 5 sx Class G Neat 5.75 cf)	492'-430'	Inside
2	Surface	0'	150'	-	45 sxs Class G Neat (51.8 cf)	0'-150'	Inside/Outside

12.15.23 - SICP=55PSI. NO BH. MIRU. JHA with crew. BWD. Run 2.25od GR to 510'. POH. RIH with setting tool and std 2-7/8 CIBP. Csg collar at 498', set CIBP @492'. Picked up off of CIBP and set down on CIBP. BP set. POH with setting tool. LD tools, load wellbore with 3 bbls water. TIH with CBL tools, could not get tools all the way past surface. Laid down logging tools, bottom drag springs were good, but top springs were crushed. Looked down wellbore and could see bend appx 1-1/2 ft below surface. Picked up setting tool and setting sleeve to attempt to get below surface. Was very tight, did not chance going any deeper. Attempted to pressure test casing to 500 psi. Got to 500 psi and shut down. Lost 400 psi in 60 seconds, attempted two more times with same results. Contacted engineering with results. Shut well in. RDMOL with WL and move to Pet Inc #7 and parked the crane truck on location. WL truck headed to the yard for job on Saturday. Off Pet Inc #5 at 14:30. NNMinerals Inspector Val Uentillie on location to witness the operation.

12.28.23 - SITP=5PSI. Bled off pressure. RU kill truck. Load tbg with 1 bbl of water. WSI cut off 2' of 2-7/8" 8V line pipe and replaced with 2-7/8 EU8RD coupling, welded coupling to production casing. RU TWG to make 2.0 OD GR run to cibp at 494'. Tagged fill at 487' (5' of fill). RIH with CBL tools. Located possible leak at 204'. Log shows cement to surface some spots better than other spots. LD CBL tool and RIH with 2" dump bailer for 3 runs of cement. LD dump bailer and attempt to pressure test to 600 psi. Lost 300 psi in 1 minute, tried several times with same leak off. RIH with perf guns and shot 4 holes at 150'. TIH and tagged TOC at 430' (62' total on top of cibp). POH with perf gun. Verified all shots fired. Attempt to est rate and circulation. Established rate of 1bpm at 200 psi. Got circulation between 2-7/8 and 5-1/2 with 5 bbls pumped, RD TWG and M&R. Shut in 2" valve. MOL at 13:00.

2.13.24 - SICP=10 PSI. MIRU cement equipment. JHA with crew. Established injection rate of 1.5 bpm at 50 psi. Got circulation. M&P 45 sks, 1.15 yield, 51.8 cuft, 9.2 bbls, 15.8# class "G" neat cement. Circulated approximately 4 bbls of good cement. Shut in casing. Cementers washed up pumps and lines. RDMOL to PET Inc #3. NNMinerals Inspector Natasha Dishface on location to witness the operation.

2.14.24 - SICP=0PSI. JHA with crew. Backhoe dug out cellar deeper. Cut off casing strings. TOC at 8.5' inside 2-7/8" casing and 6" down of 5-1/2x2-7/8". Top off with 5 gallons of cement. Welded dry hole marker plate onto the casing strings. Moved equipment to PET Inc #14. Off location at 10:00. NNMinerals Inspector Natasha Dishface on location to witness the operation.



WELL: PET INC 5	COUNTY: SAN JUAN	API #: 30-045-21060
FIELD: OJO FRUITLAND SAND	STATE: NM	SPUD: 10/6/1972
FORMATION: PICTURED CLIFFS	LOCATION: 790' FNL & 790' FEL, SEC.35, T28N, R15W	
TD: 591'	PBTD: 591'	ELEV G/L: 5,621'
		PLUGGED 2.14.24

CASING RECORD									
SURFACE CASING									
OD	WT/FT	GRADE	THD	TOP	BTM	NO JTS	BIT SZ	SX CMT	TOP CMT
5-1/2"	14#	J-55	UNK	SURF	40	1	7-7/8"	6	SURF

PRODUCTION CASING									
OD	WT/FT	GRADE	THD	TOP	BTM	NO JTS	BIT SZ	SX CMT	TOP CMT
2-7/8"	5.9#	BVLP		0	591	23	4-3/4"	5	

TUBING							
OD	WT/FT	GRADE	THD	TOP	BTM	NO JTS	BIT SZ

PERFORATION RECORD					
DATE	TOP	BOTTOM	SPF	ZONE	STATUS
10/11/72	544'	591'	SLOTTED	PICTURED CLIFFS	OPEN

Plug #2:  
Perforated 4 spf @ 150' CBL showed cmt to surface  
Circulated 45 sxs Class G Neat (51.8 cf)

Set retainer at 492'  
Plug #1: PC / Fruitland  
430' - 492'  
Dump Ball 5 sx Class G Neat 5.75 cf)

**District I**  
1625 N. French Dr., Hobbs, NM 88240  
Phone:(575) 393-6161 Fax:(575) 393-0720  
**District II**  
811 S. First St., Artesia, NM 88210  
Phone:(575) 748-1283 Fax:(575) 748-9720  
**District III**  
1000 Rio Brazos Rd., Aztec, NM 87410  
Phone:(505) 334-6178 Fax:(505) 334-6170  
**District IV**  
1220 S. St Francis Dr., Santa Fe, NM 87505  
Phone:(505) 476-3470 Fax:(505) 476-3462

State of New Mexico  
Energy, Minerals and Natural Resources  
Oil Conservation Division  
1220 S. St Francis Dr.  
Santa Fe, NM 87505

CONDITIONS

Action 319893

CONDITIONS

Operator: NNOGC EXPLORATION AND PRODUCTION, LLC P.O. Box 4439 Window Rock, AZ 86515	OGRID: 292875
	Action Number: 319893
	Action Type: [C-103] Sub. Plugging (C-103P)

CONDITIONS

Created By	Condition	Condition Date
mkuehling	approved for record only - well plugged 2/14/2024	3/5/2024