

Submit a Copy To Appropriate District
Office
District I – (575) 393-6161
1625 N. French Dr., Hobbs, NM 88240
District II – (575) 748-1283
811 S. First St., Artesia, NM 88210
District III – (505) 334-6178
1000 Rio Brazos Rd., Aztec, NM 87410
District IV – (505) 476-3460
1220 S. St. Francis Dr., Santa Fe, NM
87505

State of New Mexico
Energy, Minerals and Natural Resources

Form C-103
Revised July 18, 2013

OIL CONSERVATION DIVISION
1220 South St. Francis Dr.
Santa Fe, NM 87505

SUNDRY NOTICES AND REPORTS ON WELLS (DO NOT USE THIS FORM FOR PROPOSALS TO DRILL OR TO DEEPEN OR PLUG BACK TO A DIFFERENT RESERVOIR. USE "APPLICATION FOR PERMIT" (FORM C-101) FOR SUCH PROPOSALS.)		WELL API NO.
1. Type of Well: Oil Well <input type="checkbox"/> Gas Well <input type="checkbox"/> Other <input type="checkbox"/>		5. Indicate Type of Lease STATE <input type="checkbox"/> FEE <input type="checkbox"/>
2. Name of Operator		6. State Oil & Gas Lease No.
3. Address of Operator		7. Lease Name or Unit Agreement Name
4. Well Location Unit Letter _____: _____ feet from the _____ line and _____ feet from the _____ line Section _____ Township _____ Range _____ NMPM _____ County _____		8. Well Number
11. Elevation (Show whether DR, RKB, RT, GR, etc.)		9. OGRID Number
		10. Pool name or Wildcat

12. Check Appropriate Box to Indicate Nature of Notice, Report or Other Data

NOTICE OF INTENTION TO:	SUBSEQUENT REPORT OF:
PERFORM REMEDIAL WORK <input type="checkbox"/>	REMEDIAL WORK <input type="checkbox"/>
TEMPORARILY ABANDON <input type="checkbox"/>	ALTERING CASING <input type="checkbox"/>
PULL OR ALTER CASING <input type="checkbox"/>	COMMENCE DRILLING OPNS. <input type="checkbox"/>
DOWNHOLE COMMINGLE <input type="checkbox"/>	P AND A <input type="checkbox"/>
CLOSED-LOOP SYSTEM <input type="checkbox"/>	CASING/CEMENT JOB <input type="checkbox"/>
OTHER: <input type="checkbox"/>	OTHER: <input type="checkbox"/>

13. Describe proposed or completed operations. (Clearly state all pertinent details, and give pertinent dates, including estimated date of starting any proposed work). SEE RULE 19.15.7.14 NMAC. For Multiple Completions: Attach wellbore diagram of proposed completion or recompletion.

FINAL TA STATUS- EXTENSION

Approval of TA EXPIRES: 1/31/25
Well needs to be **PLUGGED OR RETURNED**
to **PRODUCTION**
BY THE DATE STATED ABOVE: X 7

Spud Date:

Rig Release Date:

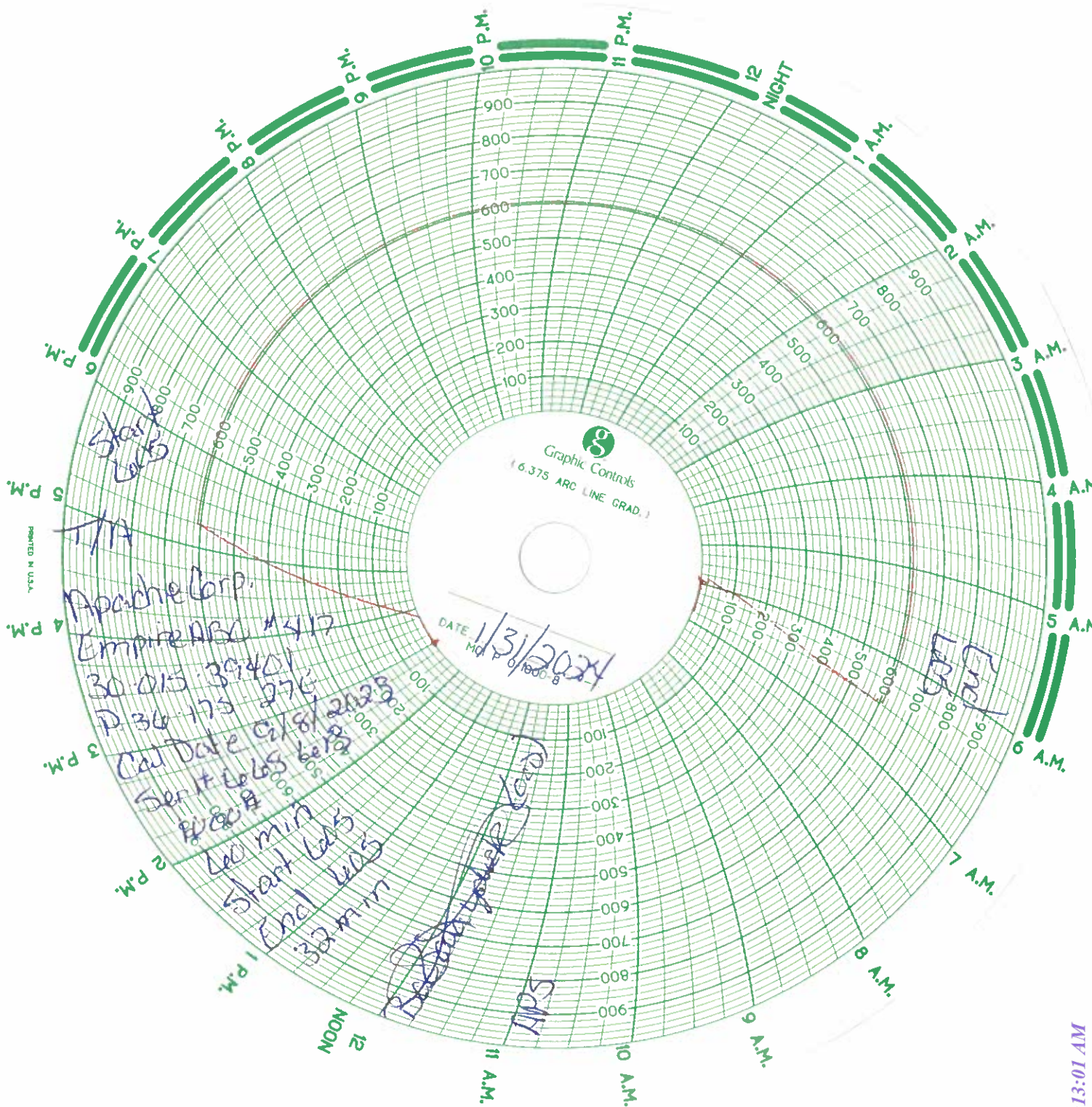
I hereby certify that the information above is true and complete to the best of my knowledge and belief.

SIGNATURE alicia fulton TITLE _____ DATE _____

Type or print name _____ E-mail address: _____ PHONE: _____

For State Use Only

APPROVED BY: Kerry Fortner TITLE Compliance Officer A DATE 3/25/24
Conditions of Approval (if any): _____



Well Info
Legal Well Name: EMPIRE ABO UNIT #417
API/Surface Loc: 3001539401
Spud Date: 1/9/2012
Original Drilling Rig Release: 1/24/2012
Target Formation: ABO
Field Name: Empire
County: Eddy
State/Province: New Mexico
Surface Legal Location:

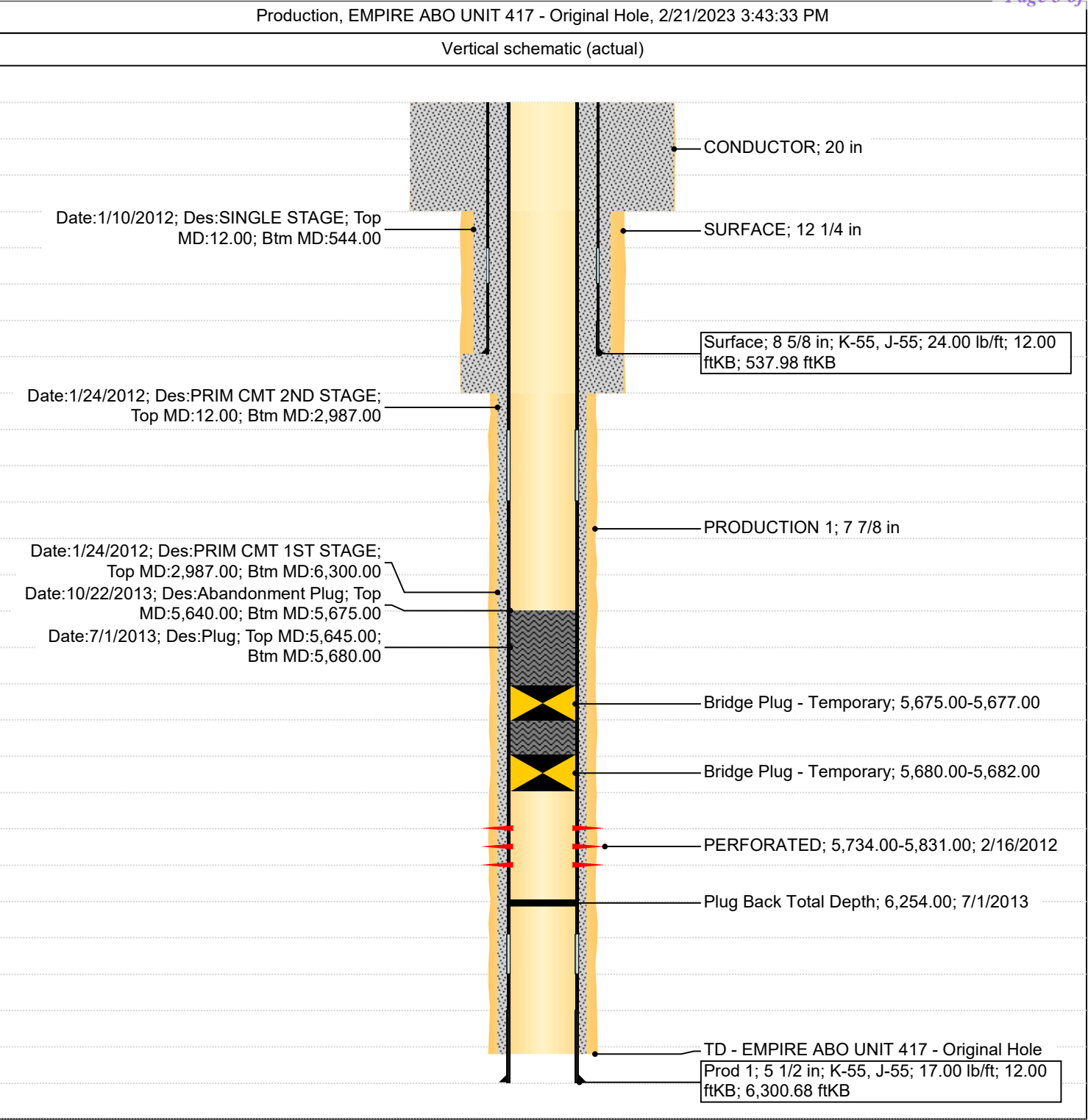
Bottom Hole Location:
Bottom Hole Legal Location:
EMPIRE ABO UNIT 417 - Original Hole
East-West Distance (ft): 533.294 From E or W Line:
EMPIRE ABO UNIT 417 - Original Hole
North-South Distance (ft): 649.87 From N or S Line:
Original Drilling Rig Release: 1/24/2012
Original KB Elevation (ft): 3,683.0
Ground Elevation (ft): 3,671.0
KB-Ground Distance (ft): 12.0
Total Depth (All) (ftKB): Original Hole - 6,300.0
Total Depth All (TVD) (ftKB): Original Hole - 6,297.3

Kick Offs & Key Depths
Type: Top Depth (ftKB):
Total Depth (ftKB): 6,300.0
PBTD (All) (ftKB): Original Hole - 6,254

DV Tool/Stage Tool	
Item Des	Top (ftKB)
Float Collar - CEMENT STAGE TOOL	2,985.88

Total Perforations Interval	
Type PERFORATED	Top Depth (ftKB) 5,734
Type PERFORATED	Bottom Depth (ftKB) 5,831

Cement Detail						
Des	String	Top (ftKB)	Btm (ftKB)	Top Meas Meth	Class	Amount (sacks)
SURFACE	Surface, 537.98ftKB, 8 5/8				CLASS C	200
SURFACE	Surface, 537.98ftKB, 8 5/8				CLASS C	350
SURFACE	Surface, 537.98ftKB, 8 5/8					
SURFACE	Surface, 537.98ftKB, 8 5/8				CLASS C	
SURFACE	Surface, 537.98ftKB, 8 5/8					
PRODUCTION 1	Prod 1, 6,300.68ftKB, 5 1/2				CLASS C	700
PRODUCTION 1	Prod 1, 6,300.68ftKB, 5 1/2					
PRODUCTION 1	Prod 1, 6,300.68ftKB, 5 1/2					
PRODUCTION 1	Prod 1, 6,300.68ftKB, 5 1/2				CLASS C	425
PRODUCTION 1	Prod 1, 6,300.68ftKB, 5 1/2				CLSS C	150
PRODUCTION 1	Prod 1, 6,300.68ftKB, 5 1/2					
PRODUCTION 1	Prod 1, 6,300.68ftKB, 5 1/2					
Abandonment Plug	Prod 1, 6,300.68ftKB, 5 1/2	5,645.00	5,680.00			5



District I
1625 N. French Dr., Hobbs, NM 88240
Phone:(575) 393-6161 Fax:(575) 393-0720
District II
811 S. First St., Artesia, NM 88210
Phone:(575) 748-1283 Fax:(575) 748-9720
District III
1000 Rio Brazos Rd., Aztec, NM 87410
Phone:(505) 334-6178 Fax:(505) 334-6170
District IV
1220 S. St Francis Dr., Santa Fe, NM 87505
Phone:(505) 476-3470 Fax:(505) 476-3462

State of New Mexico
Energy, Minerals and Natural Resources
Oil Conservation Division
1220 S. St Francis Dr.
Santa Fe, NM 87505

COMMENTS

Action 310171

COMMENTS

Operator: APACHE CORPORATION 303 Veterans Airpark Ln Midland, TX 79705	OGRID: 873
	Action Number: 310171
	Action Type: [C-103] Sub. Temporary Abandonment (C-103U)

COMMENTS

Created By	Comment	Comment Date
plmartinez	DATA ENTRY PM.	3/26/2024

District I
1625 N. French Dr., Hobbs, NM 88240
Phone:(575) 393-6161 Fax:(575) 393-0720
District II
811 S. First St., Artesia, NM 88210
Phone:(575) 748-1283 Fax:(575) 748-9720
District III
1000 Rio Brazos Rd., Aztec, NM 87410
Phone:(505) 334-6178 Fax:(505) 334-6170
District IV
1220 S. St Francis Dr., Santa Fe, NM 87505
Phone:(505) 476-3470 Fax:(505) 476-3462

State of New Mexico
Energy, Minerals and Natural Resources
Oil Conservation Division
1220 S. St Francis Dr.
Santa Fe, NM 87505

CONDITIONS

Action 310171

CONDITIONS

Operator: APACHE CORPORATION 303 Veterans Airpark Ln Midland, TX 79705	OGRID: 873
	Action Number: 310171
	Action Type: [C-103] Sub. Temporary Abandonment (C-103U)

CONDITIONS

Created By	Condition	Condition Date
kfortner	TA expires 1/31/25 Last TA extension Well will need placed on production or PA	3/25/2024