

District I  
1625 N. French Dr., Hobbs, NM 88240  
District II  
811 S. First St., Artesia, NM 88210  
District III  
1000 Rio Brazos Rd., Aztec, NM 87410  
District IV  
1220 S. St. Francis Dr., Santa Fe, NM 87505

State of New Mexico  
Energy, Minerals & Natural Resources  
  
Oil Conservation Division  
1220 South St. Francis Dr.  
Santa Fe, NM 87505

Form C-104  
Revised August 1, 2011

Submit one copy to appropriate District Office

☐ AMENDED REPORT

I. REQUEST FOR ALLOWABLE AND AUTHORIZATION TO TRANSPORT

<sup>1</sup> Operator name and Address Hilcorp Energy Company 382 Road 3100 Aztec, NM 87410		<sup>2</sup> OGRID Number 372171
		<sup>3</sup> Reason for Filing Code/ Effective Date RC
<sup>4</sup> API Number 30-039-23146	<sup>5</sup> Pool Name Blanco Mesaverde	<sup>6</sup> Pool Code 72319
<sup>7</sup> Property Code 318433	<sup>8</sup> Property Name San Juan 30-5 Unit	<sup>9</sup> Well Number 94

II. <sup>10</sup> Surface Location

UI or lot no. B	Section 27	Township 30N	Range 05W	Lot Idn	Feet from the 835	North/South Line North	Feet from the 1530	East/West Line East	County Rio Arriba
--------------------	---------------	-----------------	--------------	---------	----------------------	---------------------------	-----------------------	------------------------	----------------------

<sup>11</sup> Bottom Hole Location

UL or lot no.	Section	Township	Range	Lot Idn	Feet from the	North/South Line	Feet from the	East/West Line	County Choose an item.
<sup>12</sup> Lse Code F	<sup>13</sup> Producing Method Code F	<sup>14</sup> Gas Connection Date	<sup>15</sup> C-129 Permit Number	<sup>16</sup> C-129 Effective Date	<sup>17</sup> C-129 Expiration Date				

III. Oil and Gas Transporters


<sup>18</sup> Transporter OGRID	<sup>19</sup> Transporter Name and Address	<sup>20</sup> O/G/W
248440	Western Refinery	O
373888	Harvest Four Corners, LLC	G

IV. Well Completion Data

<sup>21</sup> Spud Date 10/23/1983	<sup>22</sup> Ready Date 5/6/2024	<sup>23</sup> TD 8145'	<sup>24</sup> PBTD 8120'	<sup>25</sup> Perforations 5361' – 6155'	<sup>26</sup> DHC, MC DHC 5370
<sup>27</sup> Hole Size		<sup>28</sup> Casing & Tubing Size	<sup>29</sup> Depth Set		<sup>30</sup> Sacks Cement
12 1/4"		9 5/8", 36#, K-55	383'		275 sx
8 3/4"		7", 20#, K-55	3953'		205 sx
6 1/4"		4 1/2", 11.6#, K-55	8145'		350 sx
		2 3/8", 4.7#, J-55	8010'		

V. Well Test Data

<sup>31</sup> Date New Oil	<sup>32</sup> Gas Delivery Date 5/6/2024	<sup>33</sup> Test Date	<sup>34</sup> Test Length 4 hrs	<sup>35</sup> Tbg. Pressure 420	<sup>36</sup> Csg. Pressure 400
<sup>37</sup> Choke Size 22/64"	<sup>38</sup> Oil 0	<sup>39</sup> Water 0	<sup>40</sup> Gas 95	<sup>41</sup> Test Method Flowing	

<sup>42</sup> I hereby certify that the rules of the Oil Conservation Division have been complied with and that the information given above is true and complete to the best of my knowledge and belief. Signature: 		OIL CONSERVATION DIVISION	
Printed name: Amanda Walker		Approved by:	
Title: Operations Regulatory Tech Sr.		Title:	
E-mail Address: mwalker@hilcorp.com		Approval Date:	
Date: 5/8/2024	Phone: 346-237-2177		

Well Name: SAN JUAN 30-5 UNIT	Well Location: T30N / R5W / SEC 27 / NWNE / 36.78851 / -107.34045	County or Parish/State: RIO ARRIBA / NM
Well Number: 94	Type of Well: CONVENTIONAL GAS WELL	Allottee or Tribe Name:
Lease Number: NMSF078738	Unit or CA Name: SAN JUAN 30-5 UNIT--DK	Unit or CA Number: NMNM78419B
US Well Number: 3003923146	Operator: HILCORP ENERGY COMPANY	

Subsequent Report

Sundry ID: 2789081

Type of Submission: Subsequent Report	Type of Action: Recompletion
Date Sundry Submitted: 05/08/2024	Time Sundry Submitted: 12:03
Date Operation Actually Began: 04/08/2024	

**Actual Procedure:** The following well has been recompleted into the Mesaverde and is now producing as a DHC with the existing Dakota. Please see the attached for the recompletion operations.

SR Attachments

Actual Procedure

SAN\_JUAN\_30\_5\_UNIT\_94\_SR\_Writeup\_20240508120310.pdf

Well Name: SAN JUAN 30-5 UNIT

Well Location: T30N / R5W / SEC 27 /  
NWNE / 36.78851 / -107.34045

County or Parish/State: RIO  
ARRIBA / NM

Well Number: 94

Type of Well: CONVENTIONAL GAS  
WELL

Allottee or Tribe Name:

Lease Number: NMSF078738

Unit or CA Name: SAN JUAN 30-5  
UNIT--DK

Unit or CA Number:  
NMNM78419B

US Well Number: 3003923146

Operator: HILCORP ENERGY  
COMPANY

Operator

I certify that the foregoing is true and correct. Title 18 U.S.C. Section 1001 and Title 43 U.S.C. Section 1212, make it a crime for any person knowingly and willfully to make to any department or agency of the United States any false, fictitious or fraudulent statements or representations as to any matter within its jurisdiction. Electronic submission of Sundry Notices through this system satisfies regulations requiring a

Operator Electronic Signature: AMANDA WALKER

Signed on: MAY 08, 2024 12:03 PM

Name: HILCORP ENERGY COMPANY

Title: Operations/Regulatory Technician

Street Address: 1111 TRAVIS ST

City: HOUSTON

State: TX

Phone: (346) 237-2177

Email address: MWALKER@HILCORP.COM

Field

Representative Name:

Street Address:

City:

State:

Zip:

Phone:

Email address:

BLM Point of Contact

BLM POC Name: MATTHEW H KADE

BLM POC Title: Petroleum Engineer

BLM POC Phone: 5055647736

BLM POC Email Address: MKADE@BLM.GOV

Disposition: Accepted

Disposition Date: 05/14/2024

Signature: Matthew Kade



Hilcorp Alaska, LLC

## Well Operations Summary

Well Name: SAN JUAN 30-5 UNIT #94

API: 3003923146

Field: DK

State: NEW MEXICO

Permit to Drill (PTD) #:

Sundry #:

Rig/Service:

## Jobs

Actual Start Date: 4/8/2024

End Date: 5/6/2024

Report Number

1

Report Start Date

4/8/2024

Report End Date

4/8/2024

## Operation

PJSM TRAVEL TO OLD LOCATION

MOVE RIG 5 MIN, SPOT IN, BH-54 PSI, 6 MIN BLEED DOWN, PROD CSG-91 PSI 8 MIN BLEED DOWN, INT CSG 3 PSI, 1 MIN BLEED DOWN, TBG-91 PSI 8 MIN BLEED DOWN. @ 7:00 AM CALLED MONICA WITH OCD, LEFT VOICE MAIL WITH BLM, 4/8/24

RIG UP

NIPPLE DOWN WELL HEAD, BACK LOCK DOWN PINS OUT 1 BROKE CALLED BIG RED TOOL WAIT 3 HRS ON BIG RED TOOL, PUMP 10 BBLs DOWN TBG, PUMP 10 BBLs DOWN BACKSIDE, CUT OUT SPACE ON HANGER TO GRIND OFF PIN. NIPPLE UP BOP.

RIG UP PREMIER, SCAN AS: 0- YELLOW, 9- BLUE, 52- GREEN, 197- RED, TOTAL= 258, RIG DOWN PREMIER.

TRAVEL TO YARD

Report Number

2

Report Start Date

4/9/2024

Report End Date

4/9/2024

## Operation

TRAVEL TO LOCATION, BH -12 PSI 2 MIN BLEED DOWN, TBG-0 PSI, INT CSG- 0 PSI, PROD -CSG 59 PSI 5 MIN BLEED DOWN.

X/ OUT TBG FLOATS, P/U BIT &amp; SCRAPER &amp; TBG OFF FLOAT, SLM TIH T/8000' TOO H.

P/U CIBP TIH T/7971' SET PLUG

ROLL HOLE W/ 126 BBL 2%, PRE TEST CSG 600 PSI, PASSED

TRAVEL TO YARD

Report Number

3

Report Start Date

4/10/2024

Report End Date

4/10/2024

## Operation

TRAVEL TO LOCATION, BH -17 PSI 3 MIN BLEED DOWN, TBG-0 PSI, INT CSG- 0 PSI, PROD -CSG 0 PSI 0 MIN BLEED DOWN.

TOOH LAY DOWN RUNNING TOOL

RIG UP BASIN, GIH W/ CBL TOOL TAG @ 7972', CBL WOULD NOT COME OFF BOTTOM, TRY TO WORK FREE, PULL OUT OF ROPE SOCKET, RIG DOWN BASIN

WAIT 2 HOURS ON FISHING TOOLS, M/U 1 1/4 OVER SHOT, &amp; BUMPER SUB, TIH TAG FISH, PULLED 5K, TOO H, LAY DOWN FISH.

RIG UP BASIN LOG WELL F/7967' T/ 2450' TOOL STARTED MESSING UP, POOH, RIG DOWN BASIN

TRAVEL TO YARD

Report Number

4

Report Start Date

4/11/2024

Report End Date

4/11/2024

## Operation

TRAVEL TO LOCATION, BH -15 PSI 3 MIN BLEED DOWN, TBG-0 PSI, INT CSG- 0 PSI, PROD -CSG 0 PSI 0 MIN BLEED DOWN

RUN CBL LOG 2400' UP T/ SURFACE, NIPPLE DOWN, B.O.P, NIPPLE DOWN 3K TBG HEAD, STUB UP 4" ON 4 1/2 CSG, NIPPLE UP 5K TBG HEAD

CSG TEST 250 LOW, 4000 PSI HIGH, 30 MIN HELD RIG DOWN BIG RED.

NIPPLE UP B.O.P

TIH W/ TBG, LAY TBG DOWN ON FLOAT, 8,000'

NIPPLE DOWN B.O.P, NIPPLE UP NIGHT CAP

TRAVEL TO YARD

Report Number

5

Report Start Date

4/12/2024

Report End Date

4/12/2024

## Operation

TRAVEL TO LOCATION, BH -21 PSI 0 MIN BLEED DOWN, TBG-0 PSI, INT CSG- 0 PSI, PROD -CSG 0 PSI 0 MIN BLEED DOWN,

NIPPLE DOWN NIGHT CAP, NIPPLE UP FRAC STACK, SET CHECK, TEST FRAC STACK TO 5K, RIG DOWN BIG RED

CHARTED MIT TEST, WITH NMOCD ON LOCATION, PASSED, BRADEN HEAD @ 21# 5 MIN BLEED OFF

RIG DOWN

TRAVEL TO YARD

Report Number

6

Report Start Date

4/16/2024

Report End Date

4/16/2024

## Operation

TRAVEL TO LOCATION, BH -10 PSI 0 MIN BLEED DOWN, TBG-0 PSI, INT CSG- 0 PSI, PROD -CSG 0 PSI 0 MIN BLEED DOWN

WAIT ON PUMPER TO GET GAS SAMPLES OFF BRADEN HEAD.

Report Number

7

Report Start Date

5/1/2024

Report End Date

5/1/2024

## Operation

MOVE IN AND SPOT GORE N2 SERVICES AND BASIN WELL LOGGING.

CREW TRAVEL TO LOCATION.



Hilcorp Alaska, LLC

## Well Operations Summary

Well Name: SAN JUAN 30-5 UNIT #94

API: 3003923146

Field: DK

State: NEW MEXICO

Sundry #:

Rig/Service:

## Operation

R/U BASIN WELL LOGGING. **SET COMPOSITE BRIDGE PLUG AT 6,270'**. DEPTH CORRELATED TO LOG RAN ON 4-10-24. PEFORATE POINT LOOKOUT/LOWER MENEFEE FROM 5,759' - 6,155' WITH 33 SHOTS, .35" HOLE 2 SPF.

5,759'-5,761' (3 SHOTS), 5,803'-5,804' (2 SHOTS), 5,842'-5,843' (2 SHOTS), 5,859'-5,862' (4 SHOTS), 5,874'-5,875' (2 SHOTS), 5,882'-5,883' (2 SHOTS), 5,925'-5,926' (2 SHOTS), 5,956'-5,957' (2 SHOTS), 5,965'-5,966' (2 SHOTS), 6,017'-6,019' (3 SHOTS), 6,036'-6,037' (2 SHOTS), 6,048'-6,049' (2 SHOTS), 6,115'-6,116' (2 SHOTS), 6,153'-6,155' (3 SHOTS).

RIG UP FRAC AND N2 EQUIPMENT. COOL DOWN N2 PUMPS.

PRIME EQUIPMENT. PRESSURE TEST FLUID LINES TO 4500 PSI. GOOD TEST. PRESSURE TEST N2 LINES TO 4500 PSI. GOOD TEST.

HELD PRE JOB SAFETY MEETING WITH ALL PERSONAL ON LOCATION.

POINT LOOKOUT/LOWER MENEFEE STIMULATION: (5,759' TO 6,155')

FRAC AT 68.8 BPM W/ 70Q N2 FOAM.

TOTAL LOAD: 969 BBLS

SLICKWATER: 957 BBLS

TOTAL ACID: 12 BBLS

TOTAL 20/40 SAND: 150,644 LBS

TOTAL N2: 1,381,000 SCF

AVERAGE RATE: 68.8 BPM

MAX RATE: 73 BPM

AVERAGE PRESSURE: 2,626 PSI

MAX PRESSURE: 2,800 PSI

MAX SAND CONC: 4.0 PPG DOWNHOLE.

ISIP: 272 PSI

5 MIN: 52 PSI

10 MIN: 29 PSI

15 MIN: 18 PSI

**SET COMPOSITE BRIDGE PLUG (SELECT) AT 5,740'**. DEPTHS CORRELATED TO LOG RAN ON 4-10-24.

PERFORATE UPPER MENEFEE/CLIFFHOUSE FROM 5,361' - 5,723' WITH 27 .35" SHOTS 2 SPF.

5,361'-5,362' (2 SHOTS), 5,380'-5,381' (2 SHOTS), 5,532'-5,533' (2 SHOTS), 5,542'-5,543' (2 SHOTS), 5,577'-5,578' (2 SHOTS), 5,587'-5,589' (3 SHOTS), 5,598'-5,600' (3 SHOTS), 5,620'-5,621' (2 SHOTS), 5,658'-5,659' (2 SHOTS), 5,666'-5,667' (2 SHOTS), 5,705'-5,706' (2 SHOTS), 5,721'-5,723' (3 SHOTS).

UPPER MENEFEE/CLIFFHOUSE STIMULATION: (5,361' - 5,723')

FRAC AT 65 BPM W/ 70Q N2 FOAM.

TOTAL LOAD: 710 BBLS

SLICKWATER: 698 BBLS

TOTAL ACID: 12 BBLS

TOTAL 20/40 SAND: 100,546 LBS

TOTAL N2: 1,039,000 SCF

AVERAGE RATE: 58.1 BPM

MAX RATE: 67.5 BPM

AVERAGE PRESSURE: 2,879 PSI

MAX PRESSURE: 3,821 PSI

MAX SAND CONC: 4.0 PPG DOWNHOLE.

ISIP: 615 PSI

5 MIN: 465 PSI

10 MIN: 436 PSI

15 MIN: 436 PSI

**RIG TO SET COMPOSITE BRIDGE PLUG (SELECT) AT 5,020'**. POOH, BLEED OFF CASING.

SHUT IN, SECURE WELL AND LOCATION.

RIG DOWN FRAC AND WIRELINE EQUIPMENT.

Report Number

8

Report Start Date

5/2/2024

Report End Date

5/2/2024

## Operation

RIG CREW TRAVEL TO THE SAN JUAN 30-5 #262

ROAD RIG & MOVE EQUIP. FROM THE SAN JUAN 30-5 #262 TO THE SAN JUAN 30-5 #94 (10 MILE MOVE). SPOT RIG AND EQUIPMENT

RIG UP.

SITP: N/A

SICP: 0 PSI

SIBH: 0 PSI

NO BLOW DOWN

NIPPLE DOWN FRAC STACK. INSTALL TUBING HANGER WITH BPV INSTALLED.

NIPPLE UP BOPE,

RIG UP WELLCHECK AND PRESSURE TEST BOPE, 250 PSI LOW AND 2000 PSI HIGH

BLIND AND PIPE RAMS, GOOD TEST, REMOVE HANGER.



Hilcorp Alaska, LLC

## Well Operations Summary

Well Name: SAN JUAN 30-5 UNIT #94

API: 3003923146

Field: DK

State: NEW MEXICO

Sundry #:

Rig/Service:

## Operation

PICK UP 3-7/8" JUNK MILL AND TRIP IN HOLE PICKING UP 2 3/8" TUBING.

TAG UP AT 5020'

UNLOAD WELL AND ESTABLISH CIRCULATION WITH AIR MIST 1300 CFM

WITH 14 BBLS WATER 1 GALLON OF FOAMER, 1 GALLON INHIBITOR PER HOUR.

**DRILL PLUG #1 AT 5020'** WELL MAKING UP TO 1/2 BUCKET OF SAND DOWN TO A CUP PER SAMPLE.

F-485 FOAMER- 3.5 GALLONS.

CRW-9152A INHIB - 3.5 GALLONS.

DIESEL FUEL - 60 GALLONS.

25 BBLS OF WATER

HANG BACK SWIVEL AND TRIP OUT OF HOLE W/ 10 STANDS TO 4390'.

SECURE WELL AND LOCATION

RIG CREW TRAVEL TO YARD

Report Number

9

Report Start Date

5/3/2024

Report End Date

5/3/2024

## Operation

RIG CREW TRAVEL TO LOCATION

SERVICE AND START EQUIPMENT

SITP: 0 PSI

SICP: 1200 PSI

SIBH: 0 PSI

BLEED DOWN WELL 60 MINUTES

TRIP IN HOLE WITH 10 STANDS, PICK UP TUBING, TAG SAND AT 5673' (67') OF SAND ON TOP OF PLUG @ 5740'.

ESTABLISH CIRCULATION WITH AIR MIST 1300 CFM

WITH 10 BBLS WATER 2 GALLONS OF FOAMER, 2 GALLON INHIBITOR PER HOUR.

C/O SAND F/ 5673' TO 5740'.

**DRILL PLUG #2 AT 5740'** WELL MAKING UP TO 1/4 BUCKET OF SAND DOWN TO A CUP PER SAMPLE.

PICK UP TUBING, TAG UP @ 6198' (72') OF SAND ON TOP OF PLUG @ 6270'.

ESTABLISH CIRCULATION WITH AIR MIST 1300 CFM

WITH 10 BBLS WATER 2 GALLONS OF FOAMER, 2 GALLONS INHIBITOR PER HOUR.

CLEAN OUT SAND FROM 6198' TO 6270' **DRILL PLUG #3 AT 6270'**.

70 BBLS. OF WATER.

HANG SWIVEL IN DERRICK, TRIP IN HOLE PICKING UP TUBING.

TAG UP @ 7970' (1') OF SAND ON TOP OF PLUG #4 @ 7971'.

TRIP OUT OF HOLE 42 STANDS TO 5307'.

SECURE WELL &amp; LOCATION

RIG CREW TRAVEL TO YARD

Report Number

10

Report Start Date

5/4/2024

Report End Date

5/4/2024

## Operation

RIG CREW TRAVEL TO LOCATION

SERVICE AND START EQUIPMENT

SITP: 0 PSI

SICP: 620 PSI

SIBH: 0 PSI

BLEED DOWN WELL 60 MINUTES

TRIP IN HOLE 42 STANDS TAG UP @ 7920' (51') OF SAND ON TOP OF PLUG #4 @ 7971'

PICK UP POWER SWIVEL, ESTABLISH CIRCULATION WITH AIR MIST 1300 CFM

WITH 10 BBLS WATER 2 GALLONS OF FOAMER, 2 GALLONS INHIBITOR PER HOUR.

C/O SAND F/ 7920' TO 7971'.

**DRILL PLUG #4 AT 7971'**, C/O PLUG PIECES & SAND TO 8120 PBTD

WELL MAKING UP TO 1/4 BUCKET OF SAND DOWN TO 2 CUPS PER SAMPLE.

USED 70 BBLS. OF WATER WHILE C/O

HANG POWER SWIVEL BACK, LAY DOWN 4 JTS TOOH WITH 44 STDS TO 5246'.

SECURE WELL AND LOCATION

RIG CREW TRAVEL TO YARD

Report Number

11

Report Start Date

5/5/2024

Report End Date

5/5/2024

## Operation

RIG CREW TRAVEL TO LOCATION



**Well Name: SAN JUAN 30-5 UNIT #94**

Rig/Service:

## Operation

CLEANED OUT TO 8120' PBTD.

PUMP OFF EXP.CK PLUG AT 1000 PSI.

RIG CREW TRAVEL TO YARD



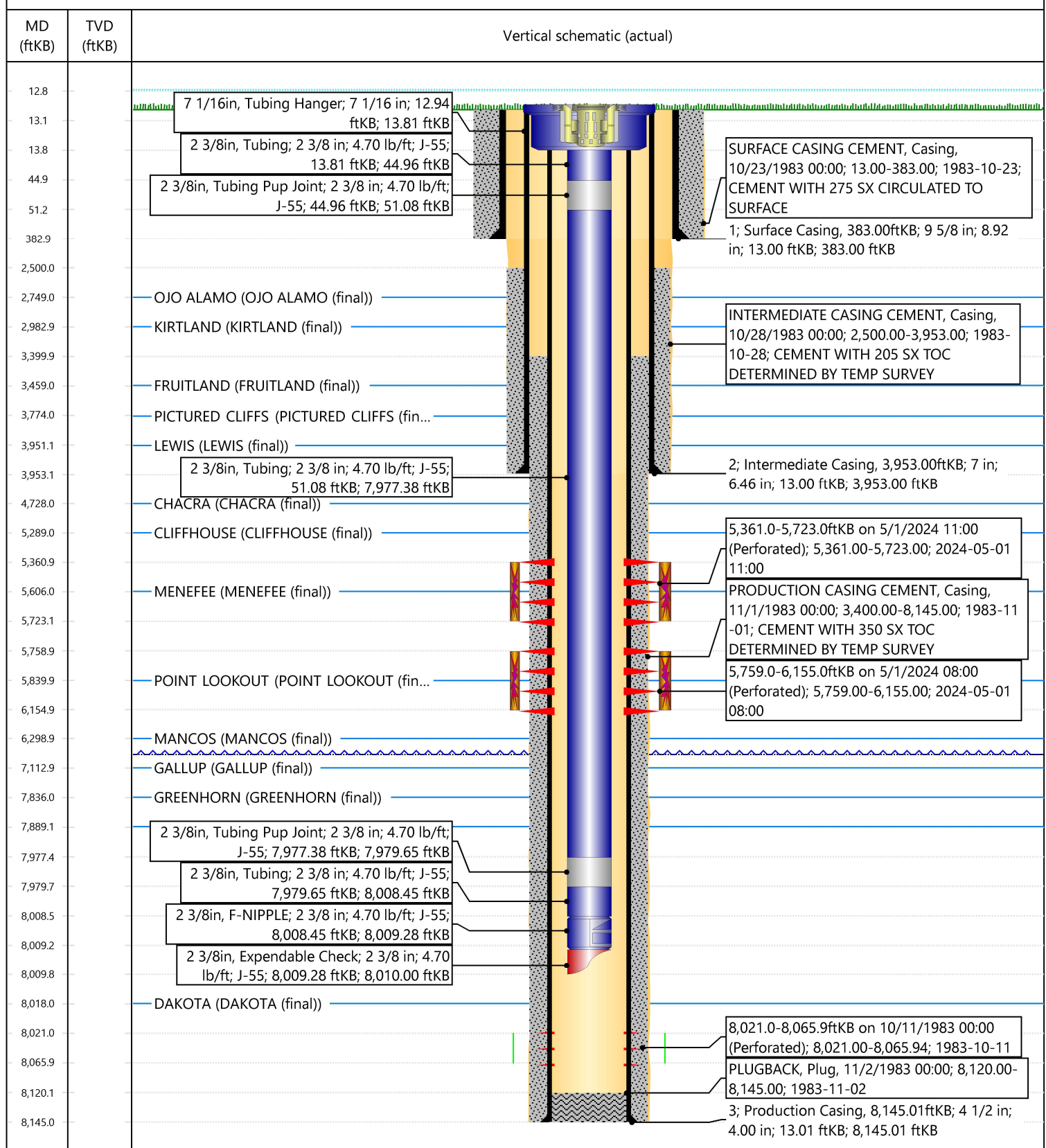


## Current Schematic - Version 3

Well Name: SAN JUAN 30-5 UNIT #94

API / UWI 3003923146	Surface Legal Location 027-030N-005W-B	Field Name DK	Route 1203	State/Province NEW MEXICO	Well Configuration Type Vertical
Ground Elevation (ft) 6,711.00	Original KB/RT Elevation (ft) 6,724.00	Tubing Hanger Elevation (ft)	RKB to GL (ft) 13.00	KB-Casing Flange Distance (ft)	KB-Tubing Hanger Distance (ft)

## Original Hole [Vertical]







NEW MEXICO ENERGY, MINERALS  
& NATURAL RESOURCES DEPARTMENT

OIL CONSERVATION DIVISION  
AZTEC DISTRICT OFFICE  
1855 RIO BRAZOS ROAD  
AZTEC NM 87410  
(505) 334-6178 FAX: (505) 334-6179  
<http://emerd.state.nm.us/ocd/District/WF361616c.htm>

**BRADENHEAD TEST REPORT**

(submit 1 copy to above address)

Date of Test 4-12-24 Operator Hilcorp Energy Co. API #30-0 39-23146

Property Name San Juan 30-5 Well No. 94 Location: Unit B Section 27 Township 30N Range 5W

Well Status (Shut-In or Producing) Initial PSI: Tubing 0 Intermediate 0 Casing 0 Bradenhead 21

OPEN BRADENHEAD AND INTERMEDIATE TO ATMOSPHERE INDIVIDUALLY FOR 15 MINUTES EACH

Testing TIME	PRESSURE			FLOW CHARACTERISTICS		
	BH	Bradenhead Int	INTERM Csg	BRADENHEAD	INTERMEDIATE	
5 min	<u>2</u>	<u>0</u>	<u>0</u>	<u>0</u>	<u>0</u>	Steady Flow <u>2psi</u> ✓
10 min	<u>3</u>	<u>0</u>	<u>0</u>	<u>0</u>	<u>0</u>	Surges
15 min	<u>2</u>	<u>0</u>	<u>0</u>	<u>0</u>	<u>0</u>	Down to Nothing <u>003</u>
20 min	<u>2</u>	<u>0</u>	<u>0</u>	<u>0</u>	<u>0</u>	Nothing ✓
25 min	<u>2</u>	<u>0</u>	<u>0</u>	<u>0</u>	<u>0</u>	Gas ✓
30 min	<u>2</u>	<u>0</u>	<u>0</u>	<u>0</u>	<u>0</u>	Gas & Water
						Water

If bradenhead flowed water, check all of the descriptions that apply below:

CLEAR \_\_\_\_\_ FRESH \_\_\_\_\_ SALTY \_\_\_\_\_ SULFUR \_\_\_\_\_ BLACK \_\_\_\_\_

5 MINUTE SHUT-IN PRESSURE

BRADENHEAD 5psi

INTERMEDIATE 0

REMARKS:

Onsite for BHT witness. 21 psi on initial reading. Blew down to 0 psi for 5 minutes. Steady Flow, building about 2 psi each 5 minutes during the 30 minute test. 5 psi after 5 minute shut-in. Blew still steady flow

By [Signature]

Witness [Signature]

(Position)

E-mail address \_\_\_\_\_



NEW MEXICO ENERGY, MINERALS and  
NATURAL RESOURCES DEPARTMENT

MECHANICAL INTEGRITY TEST REPORT  
(TA OR UIC)

Date of Test 4-10-24 Operator Hilcorp Energy Co. API # 30-0 39-23146  
Property Name San Juan 30-5 Well # 94 Location: Unit B Sec 27 Twp 34N Rge 5W  
Land Type: State \_\_\_\_\_ Well Type: Water Injection \_\_\_\_\_  
Federal \_\_\_\_\_ Salt Water Disposal \_\_\_\_\_  
Private \_\_\_\_\_ Gas Injection \_\_\_\_\_  
Indian \_\_\_\_\_ Producing Oil/Gas ☒  
Pressure observation \_\_\_\_\_

Temporarily Abandoned Well (Y/N): \_\_\_\_\_ TA Expires: \_\_\_\_\_

Casing Pres. \_\_\_\_\_ Tbg. SI Pres. \_\_\_\_\_ Max. Inj. Pres. 580  
Bradenhead Pres. \_\_\_\_\_ Tbg. Inj. Pres. \_\_\_\_\_  
Tubing Pres. \_\_\_\_\_  
Int. Casing Pres. \_\_\_\_\_

Pressured annulus up to 580 psi. for 30 mins. Test passed/failed

REMARKS: onsite to witness MIT. Pressured up to 580 psi. BH still cont. to flow  
steady throughout test. Pressure dropped 20 psi but regain it back throughout  
the 30 minute test. Pressured down to 0 psi for 1 minute.

CIRP: 7971' 4 1/2

Last Calc: 1-17-2024

1000 psi spring and the 1000 psi chart used.

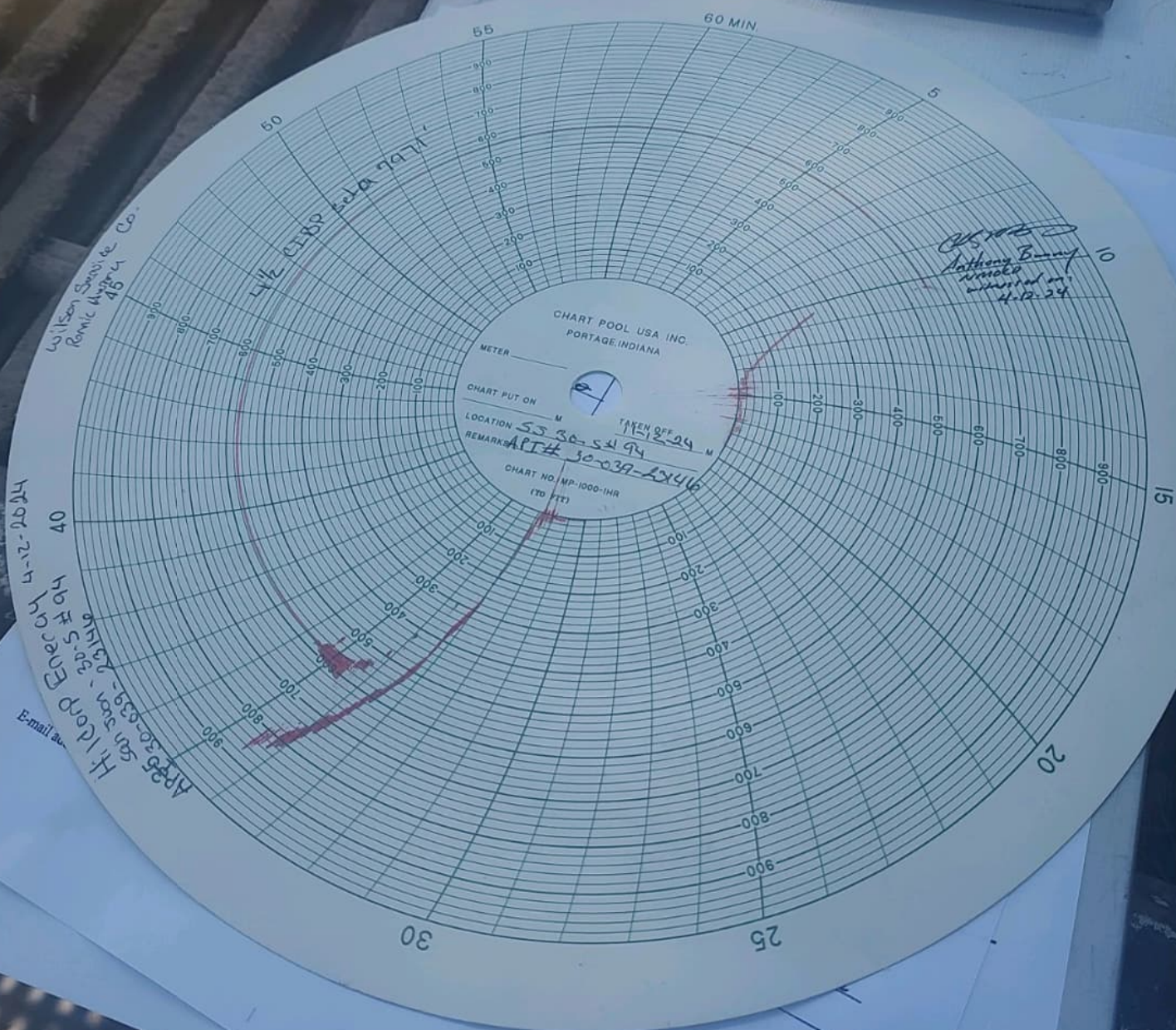
By [Signature]  
(Operator Representative)

Witness [Signature]  
(NMOCD)

(Position)

Revised 02-11-02





**Sent on:** Friday, April 26, 2024 1:48:30 PM

**To:** [Kuehling, Monica, EMNRD](#); [Amanda Atencio](#); [Vermersch, Thomas, EMNRD](#); [Kade, Matthew H](#)

**CC:** [Farmington Regulatory Techs](#); [Brian Bradshaw](#)

**Subject:** Re: [EXTERNAL] San Juan 30-5 Unit 94 (3003923146)

**CAUTION:** External sender. DO NOT open links or attachments from UNKNOWN senders.

BLM finds continuing with the procedure appropriate.

Kenneth (Kenny) Rennick

Petroleum Engineer

Bureau of Land Management  
Farmington Field Office  
6251 College Blvd  
Farmington, NM 87402

Email: [krennick@blm.gov](mailto:krennick@blm.gov)  
Mobile & Text: 505.497.0019

---

**From:** Kuehling, Monica, EMNRD <[monica.kuehling@emnrd.nm.gov](mailto:monica.kuehling@emnrd.nm.gov)>

**Sent:** Friday, April 26, 2024 11:36 AM

**To:** Amanda Atencio <[Amanda.Atencio@hilcorp.com](mailto:Amanda.Atencio@hilcorp.com)>; Rennick, Kenneth G <[krennick@blm.gov](mailto:krennick@blm.gov)>; Vermersch, Thomas, EMNRD <[Thomas.Vermersch@emnrd.nm.gov](mailto:Thomas.Vermersch@emnrd.nm.gov)>; Kade, Matthew H <[mkade@blm.gov](mailto:mkade@blm.gov)>

**Cc:** Farmington Regulatory Techs <[FarmingtonRegulatoryTechs@hilcorp.com](mailto:FarmingtonRegulatoryTechs@hilcorp.com)>; Brian Bradshaw <[Brian.Bradshaw@hilcorp.com](mailto:Brian.Bradshaw@hilcorp.com)>

**Subject:** RE: [EXTERNAL] San Juan 30-5 Unit 94 (3003923146)

NMOCD approves continuing with recomplete in MV formation through perforations from 5289 to 6299.

Concerning the Bradenhead – a 6 month and one year test from rig move is required.

Please submit log

Thank you

Monica Kuehling  
Compliance Officer Supervisor  
Deputy Oil and Gas Inspector  
New Mexico Oil Conservation Division  
North District  
Office Phone: 505-334-6178 ext. 123  
Cell Phone: 505-320-0243  
Email - [monica.kuehling@emnrd.nm.gov](mailto:monica.kuehling@emnrd.nm.gov)

---

**From:** Amanda Atencio <[Amanda.Atencio@hilcorp.com](mailto:Amanda.Atencio@hilcorp.com)>

**Sent:** Friday, April 26, 2024 11:11 AM

**To:** Kuehling, Monica, EMNRD <[monica.kuehling@emnrd.nm.gov](mailto:monica.kuehling@emnrd.nm.gov)>; Rennick, Kenneth G <[krennick@blm.gov](mailto:krennick@blm.gov)>; Vermersch, Thomas, EMNRD <[Thomas.Vermersch@emnrd.nm.gov](mailto:Thomas.Vermersch@emnrd.nm.gov)>; Kade, Matthew H <[mkade@blm.gov](mailto:mkade@blm.gov)>



Monica/Kenny/Matthew,

A BH test was witnessed and passed by John Duram/NMOCD this morning at 10am. We would like to request permission to move forward with the recompleat as outlined in the approved NOI.  
The gas analysis obtained from the BH 4/16/24 is attached. As requested, we will obtain additional gas analyses post recompleat.

Thank you,

*Amanda Atencio*

Operations Engineer – SJE  
Hilcorp Energy Company  
Office: (346) 237-2160  
Cell: (719) 393-2721

---

**From:** Kuehling, Monica, EMNRD <[monica.kuehling@emnrd.nm.gov](mailto:monica.kuehling@emnrd.nm.gov)>  
**Sent:** Tuesday, April 16, 2024 10:44 AM  
**To:** Rennick, Kenneth G <[krennick@blm.gov](mailto:krennick@blm.gov)>; Amanda Atencio <[Amanda.Atencio@hilcorp.com](mailto:Amanda.Atencio@hilcorp.com)>; Vermersch, Thomas, EMNRD <[Thomas.Vermersch@emnrd.nm.gov](mailto:Thomas.Vermersch@emnrd.nm.gov)>; Kade, Matthew H <[mkade@blm.gov](mailto:mkade@blm.gov)>  
**Cc:** Farmington Regulatory Techs <[FarmingtonRegulatoryTechs@hilcorp.com](mailto:FarmingtonRegulatoryTechs@hilcorp.com)>; Brian Bradshaw <[Brian.Bradshaw@hilcorp.com](mailto:Brian.Bradshaw@hilcorp.com)>  
**Subject:** RE: [EXTERNAL] San Juan 30-5 Unit 94 (3003923146)

**CAUTION:** External sender. DO NOT open links or attachments from UNKNOWN senders.

NMOCD approves below

Witnessed bradenhead test is required 30 days after rig move

Thank you

Monica Kuehling  
Compliance Officer Supervisor  
Deputy Oil and Gas Inspector  
New Mexico Oil Conservation Division  
North District  
Office Phone: 505-334-6178 ext. 123  
Cell Phone: 505-320-0243  
Email - [monica.kuehling@emnrd.nm.gov](mailto:monica.kuehling@emnrd.nm.gov)

---

**From:** Rennick, Kenneth G <[krennick@blm.gov](mailto:krennick@blm.gov)>  
**Sent:** Monday, April 15, 2024 12:48 PM  
**To:** Amanda Atencio <[Amanda.Atencio@hilcorp.com](mailto:Amanda.Atencio@hilcorp.com)>; Kuehling, Monica, EMNRD <[monica.kuehling@emnrd.nm.gov](mailto:monica.kuehling@emnrd.nm.gov)>; Vermersch, Thomas, EMNRD <[Thomas.Vermersch@emnrd.nm.gov](mailto:Thomas.Vermersch@emnrd.nm.gov)>; Kade, Matthew H <[mkade@blm.gov](mailto:mkade@blm.gov)>  
**Cc:** Farmington Regulatory Techs <[FarmingtonRegulatoryTechs@hilcorp.com](mailto:FarmingtonRegulatoryTechs@hilcorp.com)>; Brian Bradshaw <[Brian.Bradshaw@hilcorp.com](mailto:Brian.Bradshaw@hilcorp.com)>  
**Subject:** Re: [EXTERNAL] San Juan 30-5 Unit 94 (3003923146)

The BLM finds the proposal appropriate.

Petroleum Engineer

Bureau of Land Management  
Farmington Field Office  
6251 College Blvd  
Farmington, NM 87402

Email: [krennick@blm.gov](mailto:krennick@blm.gov)  
Mobile & Text: 505.497.0019

---

**From:** Amanda Atencio <[Amanda.Atencio@hilcorp.com](mailto:Amanda.Atencio@hilcorp.com)>  
**Sent:** Monday, April 15, 2024 12:36 PM  
**To:** Kuehling, Monica, EMNRD <[monica.kuehling@emnrd.nm.gov](mailto:monica.kuehling@emnrd.nm.gov)>; Vermersch, Thomas, EMNRD <[Thomas.Vermersch@emnrd.nm.gov](mailto:Thomas.Vermersch@emnrd.nm.gov)>; Rennick, Kenneth G <[krennick@blm.gov](mailto:krennick@blm.gov)>; Kade, Matthew H <[mkade@blm.gov](mailto:mkade@blm.gov)>  
**Cc:** Farmington Regulatory Techs <[FarmingtonRegulatoryTechs@hilcorp.com](mailto:FarmingtonRegulatoryTechs@hilcorp.com)>; Brian Bradshaw <[Brian.Bradshaw@hilcorp.com](mailto:Brian.Bradshaw@hilcorp.com)>  
**Subject:** [EXTERNAL] San Juan 30-5 Unit 94 (3003923146)

**This email has been received from outside of DOI - Use caution before clicking on links, opening attachments, or responding.**

Monica/Kenny/Matthew,

We are in the process of prepping the San Juan 30-5 Unit 94 for recompletion. Friday, we conducted a witnessed MIT and BH test. The MIT passed, however, the BH test did not. There is no intermediate pressure. Based on the passed MIT and the absence of intermediate pressure – we are confident that we do not have casing integrity issues. Rather, we believe that the BH pressure is the result of a small amount of trapped gas. We would like to propose doing an extended bleed down of the BH to make sure it is down to nothing and monitor for any buildup. We will also obtain gas samples to have analyzed. While in the process of waiting for the gas analysis to come back, and monitoring for buildup, we would like to request permission to move the rig off of the well. We will communicate findings, and request approval prior to moving the rig back/doing any additional well work.

Please let me know if you have any questions.

Thank you,

*Amanda Atencio*

Operations Engineer – SJE  
Hilcorp Energy Company  
Office: (346) 237-2160  
Cell: (719) 393-2721

---

The information contained in this email message is confidential and may be legally privileged and is intended only for the use of the individual or entity named above. If you are not an intended recipient or if you have received this message in error, you are hereby notified that any dissemination, distribution, or copy of this email is strictly prohibited. If you have received this email in error, please immediately notify us by return email or telephone if the sender's phone number is listed above, then promptly and permanently delete this message.

While all reasonable care has been taken to avoid the transmission of viruses, it is the responsibility of the recipient to ensure that the onward transmission, opening, or use of this message and any attachments will not adversely affect its systems or data. No responsibility is accepted by the company in this regard and the recipient should carry out such virus and other checks as it considers appropriate.

---

The information contained in this email message is confidential and may be legally privileged and is intended only for the use of the individual or entity named above. If you are not an intended recipient or if you have received this message in error, you are hereby notified that any dissemination, distribution, or copy of this email is strictly prohibited. If you have received this email in error, please immediately notify us by return email or telephone if the sender's phone number is listed above, then promptly and permanently delete this message.

UNITED STATES  
DEPARTMENT OF THE INTERIOR  
BUREAU OF LAND MANAGEMENTFORM APPROVED  
OMB No. 1004-0137  
Expires: July 31, 2018

## WELL COMPLETION OR RECOMPLETION REPORT AND LOG

1a. Type of Well <input type="checkbox"/> Oil Well <input checked="" type="checkbox"/> Gas Well <input type="checkbox"/> Dry <input type="checkbox"/> Other										5. Lease Serial No. <b>NMSF078738</b>			
b. Type of Completion: <input type="checkbox"/> New Well <input type="checkbox"/> Work Over <input type="checkbox"/> Deepen <input type="checkbox"/> Plug Back <input checked="" type="checkbox"/> Diff. Resvr.,										6. If Indian, Allottee or Tribe Name			
Other: <b>Recomplete</b>										7. Unit or CA Agreement Name and No.			
2. Name of Operator <b>Hilcorp Energy Company</b>										8. Lease Name and Well No. <b>San Juan 30-5 Unit 94</b>			
3. Address <b>382 Road 3100, Aztec, NM 87410</b>						3a. Phone No. (include area code) <b>(505) 599-3400</b>				9. API Well No. <b>30-039-23146</b>			
4. Location of Well (Report location clearly and in accordance with Federal requirements)*  At surface <b>B (NWNE) 835 FNL &amp; 1530 FEL</b>  At top prod. Interval reported below  At total depth										10. Field and Pool or Exploratory <b>Blanco Mesaverde</b>			
14. Date Spudded <b>10/23/1983</b>										15. Date T.D. Reached <b>10/31/1983</b>		16. Date Completed <b>5/6/2024</b> <input type="checkbox"/> D & A <input checked="" type="checkbox"/> Ready to Prod.	
18. Total Depth: <b>8145'</b>										19. Plug Back T.D.: <b>8120'</b>		20. Depth Bridge Plug Set: MD TVD	
21. Type Electric & Other Mechanical Logs Run (Submit copy of each) <b>CBL</b>										22. Was well cored? <input checked="" type="checkbox"/> No <input type="checkbox"/> Yes (Submit analysis) Was DST run? <input checked="" type="checkbox"/> No <input type="checkbox"/> Yes (Submit report) Directional Survey? <input checked="" type="checkbox"/> No <input type="checkbox"/> Yes (Submit copy)			
23. Casing and Liner Record (Report all strings set in well)													
Hole Size	Size/Grade	Wt. (#/ft.)	Top (MD)	Bottom (MD)	Stage Cementer Depth	No. of Sk. & Type of Cement	Slurry Vol. (BBL)	Cement top*	Amount Pulled				
12 1/4"	9 5/8" K-55	36		383'		275							
8 3/4"	7" K-55	20		3953'		205							
6 1/4"	4 1/2" K55	11.6		8145'		350							
24. Tubing Record													
Size	Depth Set (MD)	Packer Depth (MD)	Size	Depth Set (MD)	Packer Depth (MD)	Size	Depth Set (MD)	Packer Depth (MD)					
2 3/8"	8010'												
25. Producing Intervals													
Formation		Top	Bottom	Perforated Interval		Size	No. Holes	Perf. Status					
A) <b>Menefee/Cliffhouse</b>		<b>5361'</b>	<b>5723'</b>	<b>2 SPF</b>		<b>0.35</b>	<b>27</b>	<b>Open</b>					
B) <b>Point Lookout</b>		<b>5759'</b>	<b>6155'</b>	<b>2 SPF</b>		<b>0.35</b>	<b>33</b>	<b>Open</b>					
C)													
D)													
27. Acid, Fracture, Treatment, Cement Squeeze, etc.													
Depth Interval			Amount and Type of Material										
<b>Menefee/Cliffhouse (5361' - 5723')</b>			FRAC AT 65 BPM W/ 70Q N2 FOAM. TOTAL LOAD: 710 BBLS SLICKWATER: 698 BBLS TOTAL ACID: 12 BBLS TOTAL 20/40 SAND: 100,546 LBS TOTAL N2: 1,039,000 SCF										
<b>Point Lookout (5759' - 6155')</b>			FRAC AT 68.8 BPM W/ 70Q N2 FOAM. TOTAL LOAD: 969 BBLS SLICKWATER: 957 BBLS TOTAL ACID: 12 BBLS TOTAL 20/40 SAND: 150,644 LBS TOTAL N2: 1,381,000 SCF										
28. Production - Interval A													
Date First Produced	Test Date	Hours Tested	Test Production	Oil BBL	Gas MCF	Water BBL	Oil Gravity Corr. API	Gas Gravity	Production Method				
<b>5/6/2024</b>		<b>4</b>	<b>➡</b>	<b>0</b>	<b>95</b>	<b>0</b>			<b>Flowing</b>				
Choke Size	Tbg. Press. Flwg.	Csg. Press.	24 Hr. Rate	Oil BBL	Gas MCF	Water BBL	Gas/Oil Ratio	Well Status					
<b>22/64"</b>	<b>420</b>	<b>400</b>	<b>➡</b>	<b>0</b>	<b>570</b>	<b>0</b>		<b>Producing</b>					
28a. Production - Interval B													
Date First Produced	Test Date	Hours Tested	Test Production	Oil BBL	Gas MCF	Water BBL	Oil Gravity Corr. API	Gas Gravity	Production Method				
			<b>➡</b>										
Choke Size	Tbg. Press. Flwg. SI	Csg. Press.	24 Hr. Rate	Oil BBL	Gas MCF	Water BBL	Gas/Oil Ratio	Well Status					
			<b>➡</b>										

\*(See instructions and spaces for additional data on page 2)



28b. Production - Interval C

Date First Produced	Test Date	Hours Tested	Test Production	Oil BBL	Gas MCF	Water BBL	Oil Gravity Corr. API	Gas Gravity	Production Method
Choke Size	Tbg. Press. Flwg. SI	Csg. Press.	24 Hr. Rate	Oil BBL	Gas MCF	Water BBL	Gas/Oil Ratio	Well Status	

28c. Production - Interval D

Date First Produced	Test Date	Hours Tested	Test Production	Oil BBL	Gas MCF	Water BBL	Oil Gravity Corr. API	Gas Gravity	Production Method
Choke Size	Tbg. Press. Flwg. SI	Csg. Press.	24 Hr. Rate	Oil BBL	Gas MCF	Water BBL	Gas/Oil Ratio	Well Status	

29. Disposition of Gas (Sold, used for fuel, vented, etc.)

SOLD

30. Summary of Porous Zones (Include Aquifers):	31. Formation (Log) Markers
Show all important zones of porosity and contents thereof: Cored intervals and all drill-stem test, including depth interval tested, cushion used, time tool open, flowing and shut-in pressures and recoveries.	

Formation	Top	Bottom	Descriptions, Contents, etc.	Name	Top Meas. Depth
Ojo Alamo	2749'	2983'	White, cr-gr ss	Ojo Alamo	2749'
Kirtland	2983'	3459'	Gry sh interbedded w/tight, gry, fine-gr ss.	Kirtland	2983'
Fruitland	3459'	3774'	Dk gry-gry carb sh, coal, grn silts, light-med gry, tight, fine gr ss.	Fruitland	3459'
Pictured Cliffs	3774'	3951'	Bn-Gry, fine grn, tight ss.	Pictured Cliffs	3774'
Lewis	3951'	4728'	Shale w/ siltstone stingers	Lewis	3951'
Chacra	4728'	5289'	Gry fn grn silty, glauconitic sd stone w/ drk gry shale	Chacra	4728'
Cliffhouse	5289'	5606'	Light gry, med-fine gr ss, carb sh & coal	Mesaverde	5289'
Menefee	5606'	5844'	Med-dark gry, fine gr ss, carb sh & coal	Menefee	5606'
Point Lookout	5844'	6299'	Med-light gry, very fine gr ss w/ frequent sh breaks in lower part of formation	Point Lookout	5844'
Mancos	6299'	7113'	Dark gry carb sh.	Mancos	6299'
Gallup	7113'	7836'	Lt. gry to brn calc carb micac glucac silts & very fine gry gry ss w/ irreg. interbed sh.	Gallup	7113'
Greenhorn	7836'	7889'	Highly calc gry sh w/ thin lmst.	Greenhorn	7836'
Graneros	7889'	8018'	Dk gry shale, fossil & carb w/ pyrite incl.	Graneros	7889'
Dakota	8018'		Lt to dark gry foss carb sl calc sl sity ss w/ pyrite incl thin sh bands cly Y shale breaks	Dakota	8018'
Morrison			Interbed grn, brn & red waxy sh & fine to coard grn ss	Morrison	

32. Additional remarks (include plugging procedure):

This well is now producing as a MV/DK Commingle under DHC 5370  
MV PA#NMNM078419A

33. Indicate which items have been attached by placing a check in the appropriate boxes:

- ☒ Electrical/Mechanical Logs (1 full set req'd.)
- ☐ Geologic Report
- ☐ DST Report
- ☐ Directional Survey
- ☐ Sundry Notice for plugging and cement verification
- ☐ Core Analysis
- ☐ Other:

34. I hereby certify that the foregoing and attached information is complete and correct as determined from all available records (see attached instructions)\*


Name (please print)

Amanda Walker

Title

Operations/Regulatory Technician - Sr.

Signature



Date

5/8/2024

Title 18 U.S.C. Section 1001 and Title 43 U.S.C. Section 1212, make it a crime for any person knowingly and willfully to make to any department or agency of the United States any false, fictitious or fraudulent statements or representations as to any matter within its jurisdiction.

Mandi Walker

---

From: blm-afmss-notifications@blm.gov  
Sent: Tuesday, May 14, 2024 8:22 AM  
To: Mandi Walker  
Subject: [EXTERNAL] Well Name: SAN JUAN 30-5 UNIT, Well Number: 94, Notification of Well Completion Acceptance

**CAUTION:** External sender. DO NOT open links or attachments from UNKNOWN senders.

## The Bureau of Land Management

### Notice of Acceptance for Well Completion Report

- Operator Name: **HILCORP ENERGY COMPANY**
- Well Name: **SAN JUAN 30-5 UNIT**
- Well Number: **94**
- US Well Number: **3003923146**
- Well Completion Report Id: **WCR2024051491741**

This notification is automatically generated. Please do not reply to this message as this account is not monitored.

**District I**  
1625 N. French Dr., Hobbs, NM 88240  
Phone:(575) 393-6161 Fax:(575) 393-0720  
**District II**  
811 S. First St., Artesia, NM 88210  
Phone:(575) 748-1283 Fax:(575) 748-9720  
**District III**  
1000 Rio Brazos Rd., Aztec, NM 87410  
Phone:(505) 334-6178 Fax:(505) 334-6170  
**District IV**  
1220 S. St Francis Dr., Santa Fe, NM 87505  
Phone:(505) 476-3470 Fax:(505) 476-3462

**State of New Mexico**  
**Energy, Minerals and Natural Resources**  
**Oil Conservation Division**  
**1220 S. St Francis Dr.**  
**Santa Fe, NM 87505**

ACKNOWLEDGMENTS  
  
Action 344250

ACKNOWLEDGMENTS

Operator: HILCORP ENERGY COMPANY 1111 Travis Street Houston, TX 77002	OGRID: 372171
	Action Number: 344250
	Action Type: [C-104] Completion Packet (C-104C)

ACKNOWLEDGMENTS

<input checked="" type="checkbox"/>	I hereby certify that the required Water Use Report has been, or will be, submitted for this wells completion.
<input checked="" type="checkbox"/>	I hereby certify that the required FracFocus disclosure has been, or will be, submitted for this wells completion.

**District I**  
1625 N. French Dr., Hobbs, NM 88240  
Phone:(575) 393-6161 Fax:(575) 393-0720  
**District II**  
811 S. First St., Artesia, NM 88210  
Phone:(575) 748-1283 Fax:(575) 748-9720  
**District III**  
1000 Rio Brazos Rd., Aztec, NM 87410  
Phone:(505) 334-6178 Fax:(505) 334-6170  
**District IV**  
1220 S. St Francis Dr., Santa Fe, NM 87505  
Phone:(505) 476-3470 Fax:(505) 476-3462

State of New Mexico  
Energy, Minerals and Natural Resources  
Oil Conservation Division  
1220 S. St Francis Dr.  
Santa Fe, NM 87505

CONDITIONS  
  
Action 344250

CONDITIONS

Operator: HILCORP ENERGY COMPANY 1111 Travis Street Houston, TX 77002	OGRID: 372171
	Action Number: 344250
	Action Type: [C-104] Completion Packet (C-104C)

CONDITIONS

Created By	Condition	Condition Date
smcgrath	None	5/22/2024