

U.S. Department of the Interior  
BUREAU OF LAND MANAGEMENT

**Well Name:** CANYON LARGO UNIT

**Well Location:** T25N / R7W / SEC 21 /  
NESW / 36.383301 / -107.581558

**County or Parish/State:** RIO  
ARRIBA / NM

**Well Number:** 174

**Type of Well:** CONVENTIONAL GAS  
WELL

**Allottee or Tribe Name:**

**Lease Number:** NMSF078879

**Unit or CA Name:** CANYON LARGO  
UNIT--PC

**Unit or CA Number:**  
NMNM78383A

**US Well Number:** 3003920537

**Operator:** HILCORP ENERGY  
COMPANY

## Subsequent Report

**Sundry ID:** 2792111

**Type of Submission:** Subsequent Report

**Type of Action:** Plug and Abandonment

**Date Sundry Submitted:** 05/23/2024

**Time Sundry Submitted:** 06:28

**Date Operation Actually Began:** 05/20/2024

**Actual Procedure:** Hilcorp Energy Company has plugged and abandoned the subject well on 5/22/2024 per the attached daily reports.

## SR Attachments

### Actual Procedure

CANYON\_LARGO\_UNIT\_174\_P\_A\_SR\_BLM\_Submitted\_20240523062758.pdf

Well Name: CANYON LARGO UNIT

Well Location: T25N / R7W / SEC 21 /  
NESW / 36.383301 / -107.581558County or Parish/State: RIO  
ARRIBA / NM

Well Number: 174

Type of Well: CONVENTIONAL GAS  
WELL

Allottee or Tribe Name:

Lease Number: NMSF078879

Unit or CA Name: CANYON LARGO  
UNIT--PCUnit or CA Number:  
NMNM78383A

US Well Number: 3003920537

Operator: HILCORP ENERGY  
COMPANY**Operator**

I certify that the foregoing is true and correct. Title 18 U.S.C. Section 1001 and Title 43 U.S.C. Section 1212, make it a crime for any person knowingly and willfully to make to any department or agency of the United States any false, fictitious or fraudulent statements or representations as to any matter within its jurisdiction. Electronic submission of Sundry Notices through this system satisfies regulations requiring a

Operator Electronic Signature: PRISCILLA SHORTY

Signed on: MAY 23, 2024 06:28 AM

Name: HILCORP ENERGY COMPANY

Title: Regulatory Technician

Street Address: 382 ROAD 3100

City: AZTEC

State: NM

Phone: (505) 324-5188

Email address: PSHORTY@HILCORP.COM

**Field**

Representative Name:

Street Address:

City:

State:

Zip:

Phone:

Email address:

**BLM Point of Contact**

BLM POC Name: MATTHEW H KADE

BLM POC Title: Petroleum Engineer

BLM POC Phone: 5055647736

BLM POC Email Address: MKADE@BLM.GOV

Disposition: Accepted

Disposition Date: 05/23/2024

Signature: Matthew Kade

CANYON LARGO UNIT 174

30.039.20537

PLUG &amp; ABANDONMENT

**5/20/2024** – MIRU. CK PRESSURES. SITP 0#, SICP 64#, SIICP N/A, BH 64#, BDW 8 MINS. **NOTIFIED NMOCD & HILCORP OFFICE OF BH PSI @ 64 PSI & PC ALSO @ 64 PSI.** ND WH, NU BOP. PRESSURE TEST & FUNCTION TEST BOP'S & RU RIG FLOOR. RU WIRELINE, MU 2.47" CIBP & RIH TO 2200'. SET CIBP @ 2200'. POOH. LW W/38 BBLS. HAD TO LW WHILE RUNNING CBL BUT TOPPED OFF. MU CBL TOOLS & RUN CBL FROM 2200' TO SURFACE. POOH R/D WIRELINE. PU 67 JTS OF 1.66" TBG TO 2200'. TALLEY, STRAP & RABBIT TBG. **HEC ENGINEER SENT AN EMAIL TO KENNY RENNICK, BLM, AND MONICA KUEHLING, NMOCD, DOCUMENTING VERBAL APPROVAL TO ADJUST PLUG #1: BALANCED CEMENT PLUG INSIDE 2-7/8" CSG.** SISW, DEBRIEF CREW. SDFN. **(BLM REP. WANDA WEATHERFORD ON LOCATION)**

**5/21/2024** - CHECK PSI ON WELL SITP 0#, SICP 0#, SIICP N/A, BH 41#, BDW 3 MINS. BH STILL BLOWING @ LOW PSI. LW W/2BBLS & PUMP 5 BBLS. PT TO 560 PSI & FAILED. JUST GETTING INJEC. RATE. 1.1 BBLS/MIN @ 45 PSI. **PUMP CEMENT PLUG #1 (PC, FRD & KRD TOPS) 17 SXS 3.4 BBLS, 1.15, 15.8#, 5 GAL/SX. BOC @ 2,200'.** LD 19 JTS. R/O 8 BBLS. TOOH & WOC #1 PLUG. TIH & **TAG PLUG #1 @ 1,666'.** BH SHOWED 0 PSI WHILE WE WERE ON WOC FOR PLUG #1. LW W/1.5 BBLS. PUMP 5 BBLS. PT TO 560 BUT ONLY PRESSURING UP TO 100 PSI. **HEC ENGINEER SENT AN EMAIL TO KENNY RENNICK, BLM, AND MONICA KUEHLING, NMOCD, DOCUMENTING APPROVAL TO MOVE FORWARD WITH PLUGS #2 & #3. ALSO RECEIVED VERBAL APPROVAL TO TIH W/ WORK STRING INTO THE 2-7/8" CSG X 8-5/8" CASING ANNULUS TO 100' AND CIRC CEMENT TO SURFACE. (BLM & NMOCD ARE GOOD WITH BH PSI & CAN PROCEED WITH P&A OPS) PUMP CEMENT PLUG #2 (OJO TOP) 19 SXS 3.8 BBLS, 1.15, 15.8#, 5 GAL/SX, BOC @ 1,666'.** LD 23 JTS. R/O 8 BBLS. TOOH & WOC #2 PLUG. TIH & **TAG #2 PLUG @ 1,055'.** LD 19 JTS OF 1.66" TBG. RD RIG FLOOR, ND BOP & PREP TO CUT-OFF WH. HILCORP OFFICE APPROVED TO CUT-OFF WH & RUN 1.66" TBG DOWN SURFACE CASING (100') & CMT. RUN 1.66" TBG DOWN PC TO 480' & PUMP CMT TO SURFACE. WOC OVERNIGHT & FILL CELLAR TOMORROW. **PUMP CEMENT PLUG #3 (NAC & SURFACE) 84 SXS 17.2 BBLS, 1.15, 15.8#, 5 GAL/SX TOC @ 0', BOC @ 480' IN 2-7/8" CASING. CMT TO SURFACE INSIDE 8-5/8" CASING. (100'). WELD ON P&A MARKER. WOC OVERNIGHT. SDFN. (BLM REP. WANDA WEATHERFORD ON LOCATION)**

**5/22/2024** - RUN TALLEY TAPE DOWN WELL. (TOC IN 2-7/8" 49' & 8-5/8" 0') RU 1" POLY LINE & RUN-DOWN PC. FILL CASING AND CELLAR WITH 13 SXS CEMENT. RIG DOWN RIG AND EQUIPMENT. (RIG RELEASED @ 8:00 AM 5/22/24) MOVE OFF LOCATION. **(BLM REP. WANDA WEATHERFORD ON LOCATION)**

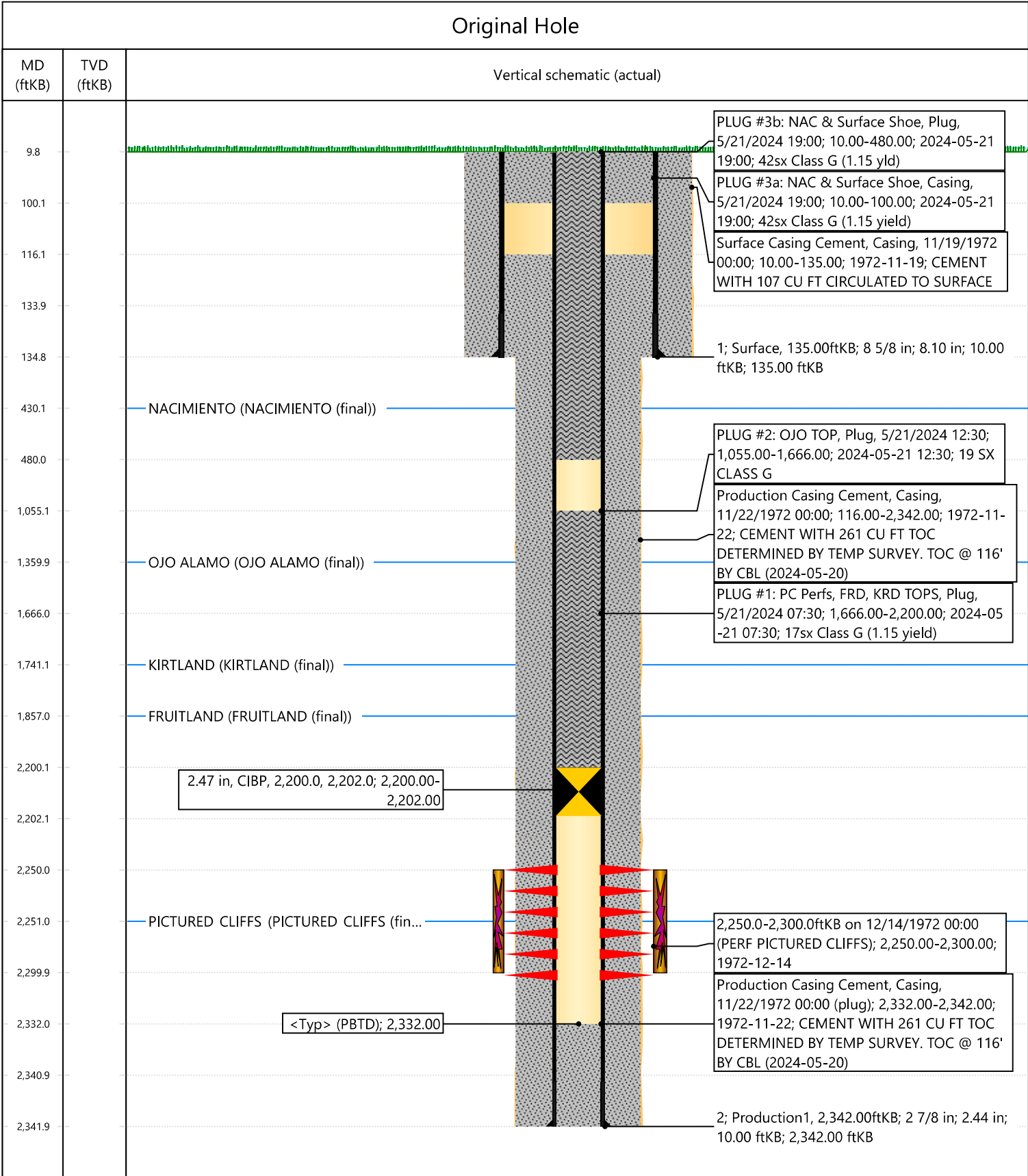
**WELL WAS PLUGGED AND ABANDONED ON 5/22/2024.**



Current Schematic - Version 3

Well Name: CANYON LARGO UNIT #174

API / UWI 3003920537	Surface Legal Location 021-025N-007W-K	Field Name BALLARD PICTURED CLIFFS (GAS)	Route 0910	State/Province NEW MEXICO	Well Configuration Type
Ground Elevation (ft) 6,566.00	Original KB/RT Elevation (ft) 6,566.00	Tubing Hanger Elevation (ft)	RKB to GL (ft) 10.00	KB-Casing Flange Distance (ft)	KB-Tubing Hanger Distance (ft)



**Priscilla Shorty**

---

**From:** John LaMond  
**Sent:** Tuesday, May 21, 2024 2:35 PM  
**To:** Rennick, Kenneth G; Kuehling, Monica, EMNRD; Kade, Matthew H  
**Cc:** Farmington Regulatory Techs; Brice Clyde - (C); Clay Padgett; Lee Murphy; Rustin Mikeska; John LaMond  
**Subject:** RE: [EXTERNAL] P&A Revision Request for Hilcorp's CANYON LARGO UNIT 174 (API # 3003920537)

Good afternoon Monica and Kenny,

One slight revision on the surface plug:

After speaking with the NMOCD and BLM, Hilcorp received verbal approval from the NMOCD and BLM to TIH w/ 1-1/4" work string into the 2-7/8" casing X 8-5/8" casing annulus to 100' and circulate cement to surface.

We will report back if we are unable to TIH to 100'.

Please let me know if you have any questions.

Thanks,

**John LaMond**

Operations Engineer – Technical Services  
Hilcorp Energy Company  
1111 Travis  
Houston, TX 77002  
346-237-2210 (Office)  
832-754-9692 (Cell)  
[jlamond@hilcorp.com](mailto:jlamond@hilcorp.com)

---

**From:** Rennick, Kenneth G <krennick@blm.gov>  
**Sent:** Tuesday, May 21, 2024 2:34 PM  
**To:** John LaMond <jlamond@hilcorp.com>; Kuehling, Monica, EMNRD <monica.kuehling@emnrd.nm.gov>; Kade, Matthew H <mkade@blm.gov>  
**Cc:** Farmington Regulatory Techs <FarmingtonRegulatoryTechs@hilcorp.com>; Brice Clyde - (C) <Brice.Clyde@hilcorp.com>; Clay Padgett <cpadgett@hilcorp.com>; Lee Murphy <lmurphy@hilcorp.com>; Rustin Mikeska <rmikeska@hilcorp.com>  
**Subject:** Re: [EXTERNAL] P&A Revision Request for Hilcorp's CANYON LARGO UNIT 174 (API # 3003920537)

**CAUTION:** External sender. DO NOT open links or attachments from UNKNOWN senders.

To confirm, the BLM finds the procedure appropriate.

Kenneth (Kenny) Rennick

Petroleum Engineer

Bureau of Land Management  
Farmington Field Office  
6251 College Blvd  
Farmington, NM 87402

Email: [krennick@blm.gov](mailto:krennick@blm.gov)

Mobile & Text: 505.497.0019

---

**From:** John LaMond <[jlamond@hilcorp.com](mailto:jlamond@hilcorp.com)>

**Sent:** Tuesday, May 21, 2024 1:05 PM

**To:** Kuehling, Monica, EMNRD <[monica.kuehling@emnrd.nm.gov](mailto:monica.kuehling@emnrd.nm.gov)>; Rennick, Kenneth G <[krennick@blm.gov](mailto:krennick@blm.gov)>; Kade, Matthew H <[mkade@blm.gov](mailto:mkade@blm.gov)>

**Cc:** Farmington Regulatory Techs <[FarmingtonRegulatoryTechs@hilcorp.com](mailto:FarmingtonRegulatoryTechs@hilcorp.com)>; Brice Clyde - (C) <[Brice.Clyde@hilcorp.com](mailto:Brice.Clyde@hilcorp.com)>; Clay Padgett <[cpadgett@hilcorp.com](mailto:cpadgett@hilcorp.com)>; Lee Murphy <[lmurphy@hilcorp.com](mailto:lmurphy@hilcorp.com)>; Rustin Mikeska <[rmikeska@hilcorp.com](mailto:rmikeska@hilcorp.com)>; John LaMond <[jlamond@hilcorp.com](mailto:jlamond@hilcorp.com)>

**Subject:** RE: [EXTERNAL] P&A Revision Request for Hilcorp's CANYON LARGO UNIT 174 (API # 3003920537)

Good afternoon Monica and Kenny,

This morning we pumped PLUG #1 as outlined below. We WOC 4 hrs, RIH, and tagged TOC at 1,666' (GOOD tag).

Moving forward, Hilcorp received verbal approval from the NMOCD and BLM to perform the following:

- PLUG #2: 19sx of Class G Cement (15.8 PPG, 1.15 yield); OJO Top @ 1,360':
  - Pump a 19 sack balanced cement plug inside the 2-7/8" casing (est. **TOC @ +/- 1,000'** & est. **BOC @ +/- 1,666'**).
  - WOC for 4 hrs, tag WOC w/ work string.
- PLUG #3: 42sx of Class G Cement (15.8 PPG, 1.15 yield); NAC Top @ 430' | Surf. Casing Shoe @ 135':
  - TIH & perforate squeeze holes @ +/- 100'. Establish circulation.
  - TIH w/ work string to 480'
  - Pump 28sx of cement in the 2-7/8" casing X 8-5/8" casing annulus (est. **TOC @ +/- 0'** & est. **BOC @ +/- 100'**). Pump a 14 sack balanced cement plug inside the 2-7/8" casing (est. **TOC @ +/- 0'** & est. **BOC @ +/- 480'**). WOC for 4 hrs, tag WOC w/ work string.
  - Top off as needed.

Please let me know if you have any questions.

Thanks,

**John LaMond**

Operations Engineer – Technical Services  
Hilcorp Energy Company  
1111 Travis  
Houston, TX 77002  
346-237-2210 (Office)  
832-754-9692 (Cell)

[jlamond@hilcorp.com](mailto:jlamond@hilcorp.com)

---

**From:** Rennick, Kenneth G <[krennick@blm.gov](mailto:krennick@blm.gov)>  
**Sent:** Monday, May 20, 2024 5:47 PM  
**To:** John LaMond <[jlamond@hilcorp.com](mailto:jlamond@hilcorp.com)>  
**Subject:** Re: [EXTERNAL] P&A Revision Request for Hilcorp's CANYON LARGO UNIT 174 (API # 3003920537)

**CAUTION:** External sender. DO NOT open links or attachments from UNKNOWN senders.

To confirm, the BLM finds the procedure appropriate.

Kenneth (Kenny) Rennick

Petroleum Engineer

Bureau of Land Management  
Farmington Field Office  
6251 College Blvd  
Farmington, NM 87402

Email: [krennick@blm.gov](mailto:krennick@blm.gov)  
Mobile & Text: 505.497.0019

---

**From:** John LaMond <[jlamond@hilcorp.com](mailto:jlamond@hilcorp.com)>  
**Sent:** Monday, May 20, 2024 4:41 PM  
**To:** Kuehling, Monica, EMNRD <[monica.kuehling@emnrn.nm.gov](mailto:monica.kuehling@emnrn.nm.gov)>; Rennick, Kenneth G <[krennick@blm.gov](mailto:krennick@blm.gov)>; Kade, Matthew H <[mkade@blm.gov](mailto:mkade@blm.gov)>  
**Cc:** Farmington Regulatory Techs <[FarmingtonRegulatoryTechs@hilcorp.com](mailto:FarmingtonRegulatoryTechs@hilcorp.com)>; Brice Clyde - (C) <[Brice.Clyde@hilcorp.com](mailto:Brice.Clyde@hilcorp.com)>; Clay Padgett <[cpadgett@hilcorp.com](mailto:cpadgett@hilcorp.com)>; Lee Murphy <[lmurphy@hilcorp.com](mailto:lmurphy@hilcorp.com)>; Rustin Mikeska <[rmikeska@hilcorp.com](mailto:rmikeska@hilcorp.com)>; John LaMond <[jlamond@hilcorp.com](mailto:jlamond@hilcorp.com)>  
**Subject:** RE: [EXTERNAL] P&A Revision Request for Hilcorp's CANYON LARGO UNIT 174 (API # 3003920537)

Good afternoon Monica and Kenny,

Attached is the CBL run today (5/20/2024). It shows TOC @ ~116'. Surface Casing Shoe is @ 135'.

We also found this morning that there was 64 psi on both the BH & the Production casing. After setting the CIBP @ 2,200' the pressure test failed.

Moving forward, Hilcorp received verbal approval from the NMOCD and BLM for the following plug adjustment:

- PLUG #1: 17sx of Class G Cement (15.8 PPG, 1.15 yield); PC Perfs @ 2,250' | FRD Top @ 1,857' | KRD Top @ 1,741':
  - Pump a 17 sack balanced cement plug inside the 2-7/8" casing (est. **TOC @ +/- 1,600'** & est. **BOC @ +/- 2,200'**).



Tomorrow morning we will RIH and tag TOC and perform a pressure test. We will report TOC and morning pressures and report back before proceeding with further plugging operations.

Please let me know if you have any questions or concerns.

Thanks,

**John LaMond**

Operations Engineer – Technical Services

Hilcorp Energy Company

1111 Travis

Houston, TX 77002

346-237-2210 (Office)

832-754-9692 (Cell)

[jlamond@hilcorp.com](mailto:jlamond@hilcorp.com)

---

**From:** Kuehling, Monica, EMNRD <[monica.kuehling@emnrd.nm.gov](mailto:monica.kuehling@emnrd.nm.gov)>

**Sent:** Monday, March 25, 2024 3:43 PM

**To:** Rennick, Kenneth G <[krennick@blm.gov](mailto:krennick@blm.gov)>; John LaMond <[jlamond@hilcorp.com](mailto:jlamond@hilcorp.com)>; Kade, Matthew H <[mkade@blm.gov](mailto:mkade@blm.gov)>

**Cc:** Farmington Regulatory Techs <[FarmingtonRegulatoryTechs@hilcorp.com](mailto:FarmingtonRegulatoryTechs@hilcorp.com)>; Brice Clyde - (C)

<[Brice.Clyde@hilcorp.com](mailto:Brice.Clyde@hilcorp.com)>; Clay Padgett <[cpadgett@hilcorp.com](mailto:cpadgett@hilcorp.com)>; Lee Murphy <[lmurphy@hilcorp.com](mailto:lmurphy@hilcorp.com)>; Max Weaver

<[mweaver@hilcorp.com](mailto:mweaver@hilcorp.com)>; Rustin Mikeska <[rmikeska@hilcorp.com](mailto:rmikeska@hilcorp.com)>

**Subject:** RE: [EXTERNAL] P&A Revision Request for Hilcorp's CANYON LARGO UNIT 174 (API # 3003920537)

**CAUTION:** External sender. DO NOT open links or attachments from UNKNOWN senders.

NMOCD approves below

Thank you

Monica Kuehling

Compliance Officer Supervisor

Deputy Oil and Gas Inspector

New Mexico Oil Conservation Division

North District

Office Phone: 505-334-6178 ext. 123

Cell Phone: 505-320-0243

Email - [monica.kuehling@emnrd.nm.gov](mailto:monica.kuehling@emnrd.nm.gov)

---

**From:** Rennick, Kenneth G <[krennick@blm.gov](mailto:krennick@blm.gov)>

**Sent:** Tuesday, March 19, 2024 3:00 PM

**To:** John LaMond <[jlamond@hilcorp.com](mailto:jlamond@hilcorp.com)>; Kuehling, Monica, EMNRD <[monica.kuehling@emnrd.nm.gov](mailto:monica.kuehling@emnrd.nm.gov)>; Kade, Matthew H <[mkade@blm.gov](mailto:mkade@blm.gov)>

**Cc:** Farmington Regulatory Techs <[FarmingtonRegulatoryTechs@hilcorp.com](mailto:FarmingtonRegulatoryTechs@hilcorp.com)>; Brice Clyde - (C)

<[Brice.Clyde@hilcorp.com](mailto:Brice.Clyde@hilcorp.com)>; Clay Padgett <[cpadgett@hilcorp.com](mailto:cpadgett@hilcorp.com)>; Lee Murphy <[lmurphy@hilcorp.com](mailto:lmurphy@hilcorp.com)>; Max Weaver



<[mweaver@hilcorp.com](mailto:mweaver@hilcorp.com)>; Rustin Mikeska <[rmikeska@hilcorp.com](mailto:rmikeska@hilcorp.com)>

**Subject:** Re: [EXTERNAL] P&A Revision Request for Hilcorp's CANYON LARGO UNIT 174 (API # 3003920537)

Please note in previous message I meant, the BLM finds the revised procedure appropriate.

Kenneth (Kenny) Rennick

Petroleum Engineer

Bureau of Land Management  
Farmington Field Office  
6251 College Blvd  
Farmington, NM 87402

Email: [krennick@blm.gov](mailto:krennick@blm.gov)  
Mobile & Text: 505.497.0019

---

**From:** Rennick, Kenneth G <[krennick@blm.gov](mailto:krennick@blm.gov)>

**Sent:** Tuesday, March 19, 2024 2:57 PM

**To:** John LaMond <[jlamond@hilcorp.com](mailto:jlamond@hilcorp.com)>; Kuehling, Monica, EMNRD <[monica.kuehling@emnrd.nm.gov](mailto:monica.kuehling@emnrd.nm.gov)>; Kade, Matthew H <[mkade@blm.gov](mailto:mkade@blm.gov)>

**Cc:** Farmington Regulatory Techs <[FarmingtonRegulatoryTechs@hilcorp.com](mailto:FarmingtonRegulatoryTechs@hilcorp.com)>; Brice Clyde - (C) <[Brice.Clyde@hilcorp.com](mailto:Brice.Clyde@hilcorp.com)>; Clay Padgett <[cpadgett@hilcorp.com](mailto:cpadgett@hilcorp.com)>; Lee Murphy <[lmurphy@hilcorp.com](mailto:lmurphy@hilcorp.com)>; Max Weaver <[mweaver@hilcorp.com](mailto:mweaver@hilcorp.com)>; Rustin Mikeska <[rmikeska@hilcorp.com](mailto:rmikeska@hilcorp.com)>

**Subject:** Re: [EXTERNAL] P&A Revision Request for Hilcorp's CANYON LARGO UNIT 174 (API # 3003920537)

The BLM finds the revised procedure approval.

Kenneth (Kenny) Rennick

Petroleum Engineer

Bureau of Land Management  
Farmington Field Office  
6251 College Blvd  
Farmington, NM 87402

Email: [krennick@blm.gov](mailto:krennick@blm.gov)  
Mobile & Text: 505.497.0019

---

**From:** John LaMond <[jlamond@hilcorp.com](mailto:jlamond@hilcorp.com)>

**Sent:** Tuesday, March 19, 2024 2:51 PM

**To:** Kuehling, Monica, EMNRD <[monica.kuehling@emnrd.nm.gov](mailto:monica.kuehling@emnrd.nm.gov)>; Rennick, Kenneth G <[krennick@blm.gov](mailto:krennick@blm.gov)>; Kade, Matthew H <[mkade@blm.gov](mailto:mkade@blm.gov)>

**Cc:** Farmington Regulatory Techs <[FarmingtonRegulatoryTechs@hilcorp.com](mailto:FarmingtonRegulatoryTechs@hilcorp.com)>; Brice Clyde - (C) <[Brice.Clyde@hilcorp.com](mailto:Brice.Clyde@hilcorp.com)>; Clay Padgett <[cpadgett@hilcorp.com](mailto:cpadgett@hilcorp.com)>; Lee Murphy <[lmurphy@hilcorp.com](mailto:lmurphy@hilcorp.com)>; Max Weaver

<[mweaver@hilcorp.com](mailto:mweaver@hilcorp.com)>; Rustin Mikeska <[rmikeska@hilcorp.com](mailto:rmikeska@hilcorp.com)>; John LaMond <[jlamond@hilcorp.com](mailto:jlamond@hilcorp.com)>

**Subject:** [EXTERNAL] P&A Revision Request for Hilcorp's CANYON LARGO UNIT 174 (API # 3003920537)

**This email has been received from outside of DOI - Use caution before clicking on links, opening attachments, or responding.**

Good afternoon Monica and Kenny,

Hilcorp is planning to work on the CANYON LARGO UNIT 174 (API # 3003920537) P&A in the near future.

I have attached the approved P&A NOI, as well as an updated procedure based on the COAs in the approved NOI.

Based on the COAs, Hilcorp requests the following adjustments to the approved procedure:

- Extend PLUG #1 up to 1,260' to cover the BLM pick for the OJO top @ 1,360'.
- Combine PLUG #2 and PLUG #3 in the original approved NOI, accounting for the BLM and NMOCD Pick for the NACIMIENTO Top @ 430'.
- Squeeze perms will no longer be shot @ 904' and a cement retainer will no longer be set @ 854'.
- Please see the details of PLUG #1 and new "PLUG #2" below (and attached), including perforating squeeze/circ holes @ 480'.



**HILCORP ENERGY COMPANY**  
**CANYON LARGO UNIT 174**  
**P&A NOI**

API #: 3003920537

**JOB PROCEDURES**

1. Contact NMOCD and BLM (where applicable) 24 hours prior to MIRU.
2. Hold pre-job safety meeting. Verify cathodic is off. Comply with all NMOCD, BLM, and HEC safety and environmental regulations.
3. MIRU service rig and associated equipment; NU and test BOP.
4. TIH w/ work string. Set a 2-7/8" CIBP at +/- 2,200' to isolate the PC Perfs.
5. Load the well as needed. Pressure test the casing above the plug set @ 2,200' to 560 psig.
6. RU Wireline. Run CBL. Record Top of Cement. All subsequent plugs below are subject to change pending CBL results.
7. TIH w/ tubing/work string to +/- 2,200'.
8. **PLUG #1: 27sx of Class G Cement (15.8 PPG, 1.15 yield); PC Perfs @ 2,250' | FRD Top @ 1,857' | KRD Top @ 1,741' | OJO Top @ 1,360':**  
 Pump a 27 sack balanced cement plug inside the 2-7/8" casing (est. **TOC @ +/- 1,260'** & est. **BOC @ +/- 2,200'**).
9. TIH & perforate squeeze holes @ +/- 480'. Establish circulation.
10. **PLUG #2: 113sx of Class G Cement (15.8 PPG, 1.15 yield); NAC Top @ 430' | Surf. Casing Shoe @ 135':**  
 Pump 62sx of cement in the 2-7/8" casing X 6-3/4" open hole annulus (est. **TOC @ +/- 135'** & est. **BOC @ +/- 480'**). Continue pumping 37sx of cement in the 2-7/8" casing X 8-5/8" casing annulus (est. **TOC @ +/- 0'** & est. **BOC @ +/- 135'**). Pump a 14 sack balanced cement plug inside the 2-7/8" casing (est. **TOC @ +/- 0'** & est. **BOC @ +/- 480'**). WOC for 4 hrs, tag WOC w/ work string.
11. ND BOP, cut off casing below casing flange. Top off cement in surface casing annulus, if needed. Install a P&A marker with cement to comply with regulations. Rig down, move off location, cut off anchors, and restore location.

Do the NMOCD and BLM approve of the revised procedure?

Thanks,

**John LaMond**

Operations Engineer – Technical Services

Hilcorp Energy Company

1111 Travis

Houston, TX 77002

346-237-2210 (Office)

832-754-9692 (Cell)

[jlamond@hilcorp.com](mailto:jlamond@hilcorp.com)

The information contained in this email message is confidential and may be legally privileged and is intended only for the use of the individual or entity named above. If you are not an intended recipient or if you have received this message in error, you are hereby notified that any dissemination, distribution, or copy of this email is strictly prohibited. If you have received this email in error, please immediately notify us by return email or telephone if the sender's phone number is listed above, then promptly and permanently delete this message.

While all reasonable care has been taken to avoid the transmission of viruses, it is the responsibility of the recipient to ensure that the onward transmission, opening, or use of this message and any attachments will not adversely affect its systems or data. No responsibility is accepted by the company in this regard and the recipient should carry out such virus and other checks as it considers appropriate.

**District I**  
1625 N. French Dr., Hobbs, NM 88240  
Phone:(575) 393-6161 Fax:(575) 393-0720  
**District II**  
811 S. First St., Artesia, NM 88210  
Phone:(575) 748-1283 Fax:(575) 748-9720  
**District III**  
1000 Rio Brazos Rd., Aztec, NM 87410  
Phone:(505) 334-6178 Fax:(505) 334-6170  
**District IV**  
1220 S. St Francis Dr., Santa Fe, NM 87505  
Phone:(505) 476-3470 Fax:(505) 476-3462

State of New Mexico  
Energy, Minerals and Natural Resources  
Oil Conservation Division  
1220 S. St Francis Dr.  
Santa Fe, NM 87505

COMMENTS

Action 347108

COMMENTS

Operator: HILCORP ENERGY COMPANY 1111 Travis Street Houston, TX 77002	OGRID: 372171
	Action Number: 347108
	Action Type: [C-103] Sub. Plugging (C-103P)

COMMENTS

Created By	Comment	Comment Date
plmartinez	DATA ENTRY PM	5/28/2024

**District I**  
1625 N. French Dr., Hobbs, NM 88240  
Phone:(575) 393-6161 Fax:(575) 393-0720  
**District II**  
811 S. First St., Artesia, NM 88210  
Phone:(575) 748-1283 Fax:(575) 748-9720  
**District III**  
1000 Rio Brazos Rd., Aztec, NM 87410  
Phone:(505) 334-6178 Fax:(505) 334-6170  
**District IV**  
1220 S. St Francis Dr., Santa Fe, NM 87505  
Phone:(505) 476-3470 Fax:(505) 476-3462

State of New Mexico  
Energy, Minerals and Natural Resources  
Oil Conservation Division  
1220 S. St Francis Dr.  
Santa Fe, NM 87505

CONDITIONS  
  
Action 347108

CONDITIONS

Operator: HILCORP ENERGY COMPANY 1111 Travis Street Houston, TX 77002	OGRID: 372171
	Action Number: 347108
	Action Type: [C-103] Sub. Plugging (C-103P)

CONDITIONS

Created By	Condition	Condition Date
mkuehling	well plugged 5/22/2024	5/28/2024