

**District I**

1625 N. French Dr., Hobbs, NM 88240  
Phone:(575) 393-6161 Fax:(575) 393-0720

**District II**

811 S. First St., Artesia, NM 88210  
Phone:(575) 748-1283 Fax:(575) 748-9720

**District III**

1000 Rio Brazos Rd., Aztec, NM 87410  
Phone:(505) 334-6178 Fax:(505) 334-6170

**District IV**

1220 S. St Francis Dr., Santa Fe, NM 87505  
Phone:(505) 476-3470 Fax:(505) 476-3462

**State of New Mexico**  
**Energy, Minerals and Natural Resources**  
**Oil Conservation Division**  
**1220 S. St Francis Dr.**  
**Santa Fe, NM 87505**

Form C-101  
August 1, 2011

Permit 367974

**APPLICATION FOR PERMIT TO DRILL, RE-ENTER, DEEPEN, PLUGBACK, OR ADD A ZONE**

1. Operator Name and Address Franklin Mountain Energy 3, LLC 44 Cook Street Denver, CO 80206		2. OGRID Number 331595
		3. API Number 30-025-53168
4. Property Code 334693	5. Property Name ALPHA STATE COM	6. Well No. 801H

**7. Surface Location**

UL - Lot C	Section 9	Township 19S	Range 35E	Lot Idn C	Feet From 320	N/S Line N	Feet From 1576	E/W Line W	County Lea
---------------	--------------	-----------------	--------------	--------------	------------------	---------------	-------------------	---------------	---------------

**8. Proposed Bottom Hole Location**

UL - Lot D	Section 33	Township 18S	Range 35E	Lot Idn D	Feet From 100	N/S Line N	Feet From 800	E/W Line W	County Lea
---------------	---------------	-----------------	--------------	--------------	------------------	---------------	------------------	---------------	---------------

**9. Pool Information**

SCHARB;WOLFCAMP	55640
-----------------	-------

**Additional Well Information**

11. Work Type New Well	12. Well Type OIL	13. Cable/Rotary	14. Lease Type State	15. Ground Level Elevation 3858
16. Multiple N	17. Proposed Depth 22101	18. Formation Wolfcamp	19. Contractor	20. Spud Date 8/15/2024
Depth to Ground water		Distance from nearest fresh water well		Distance to nearest surface water

☒ We will be using a closed-loop system in lieu of lined pits

**21. Proposed Casing and Cement Program**

Type	Hole Size	Casing Size	Casing Weight/ft	Setting Depth	Sacks of Cement	Estimated TOC
Surf	17.5	13.375	54.5	1894	1453	0
Int1	12.25	9.625	40	7899	1733	0
Prod	8.75	7	32	10822	260	6899
Prod	8.75	5.5	20	22100	2815	10822

**Casing/Cement Program: Additional Comments**

--

**22. Proposed Blowout Prevention Program**

Type Double Ram	Working Pressure 10000	Test Pressure 5000	Manufacturer CACTUS
--------------------	---------------------------	-----------------------	------------------------

23. I hereby certify that the information given above is true and complete to the best of my knowledge and belief. <b>I further certify I have complied with 19.15.14.9 (A) NMAC <input checked="" type="checkbox"/> and/or 19.15.14.9 (B) NMAC <input checked="" type="checkbox"/> if applicable.</b>  Signature: Printed Name: Electronically filed by Rachael A Overbey Title: Project Manager Email Address: roverbey@fmellc.com Date: 6/26/2024	<b>OIL CONSERVATION DIVISION</b>  Approved By: Paul F Kautz Title: Geologist Approved Date: 7/8/2024 Expiration Date: 7/8/2026 Conditions of Approval Attached
Phone: 303-570-4057	

District I  
1625 N. French Dr., Hobbs, NM 88240  
Phone: (575) 393-6161 Fax: (575) 393-0720  
District II  
811 S. First St., Artesia, NM 88210  
Phone: (575) 748-1283 Fax: (575) 748-9720  
District III  
1000 Rio Brazos Road, Aztec, NM 87410  
Phone: (505) 334-6178 Fax: (505) 334-6170  
District IV  
1220 S. St. Francis Dr., Santa Fe, NM 87505  
Phone: (505) 476-3460 Fax: (505) 476-3462

State of New Mexico  
Energy, Minerals & Natural Resources Department  
OIL CONSERVATION DIVISION  
1220 South St. Francis Dr.  
Santa Fe, NM 87505

Form C-102  
Revised August 1, 2011  
Submit one copy to appropriate  
District Office

☐ AMENDED REPORT

WELL LOCATION AND ACREAGE DEDICATION PLAT

<sup>1</sup> API Number		<sup>2</sup> Pool Code 55640	<sup>3</sup> Pool Name SCHARB; WOLFCAMP
<sup>4</sup> Property Code	<sup>5</sup> Property Name ALPHA STATE COM		<sup>6</sup> Well Number 801H
<sup>7</sup> OGRID No. 331595	<sup>8</sup> Operator Name FRANKLIN MOUNTAIN ENERGY 3, LLC		<sup>9</sup> Elevation 3,858.2'

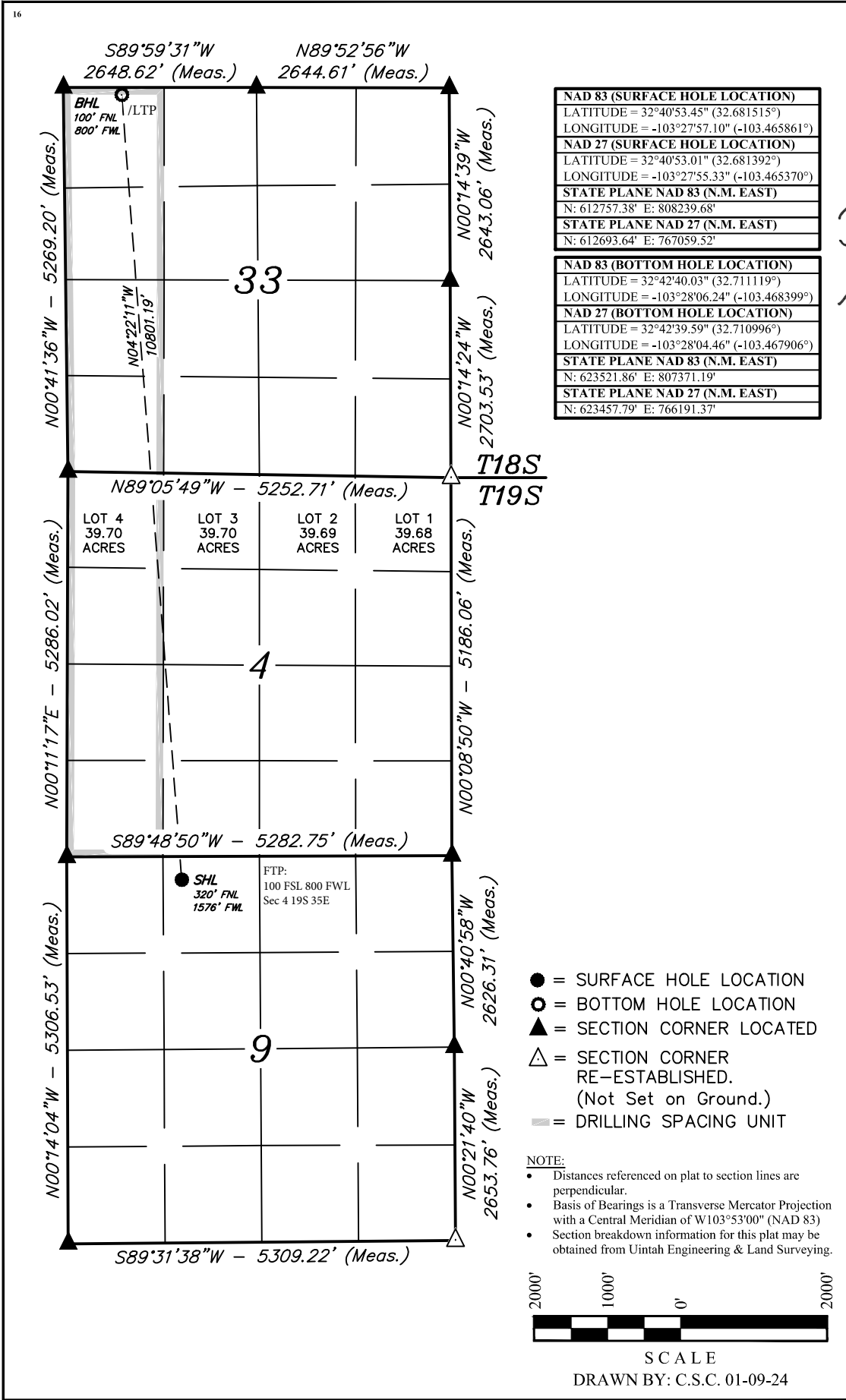
<sup>10</sup> Surface Location

UL or lot no. C	Section 9	Township 19S	Range 35E	Lot Idn	Feet from the 320	North/South line NORTH	Feet from the 1576	East/West line WEST	County LEA
--------------------	--------------	-----------------	--------------	---------	----------------------	---------------------------	-----------------------	------------------------	---------------

<sup>11</sup> Bottom Hole Location If Different From Surface

UL or lot no. D	Section 33	Township 18S	Range 35E	Lot Idn	Feet from the 100	North/South line NORTH	Feet from the 800	East/West line WEST	County LEA
<sup>12</sup> Dedicated Acres 319.70		<sup>13</sup> Joint or Infill		<sup>14</sup> Consolidation Code		<sup>15</sup> Order No.			

No allowable will be assigned to this completion until all interests have been consolidated or a non-standard unit has been approved by the division.



**<sup>17</sup> OPERATOR CERTIFICATION**  
I hereby certify that the information contained herein is true and complete to the best of my knowledge and belief, and that this organization either owns a working interest or unleased mineral interest in the land including the proposed bottom hole location or has a right to drill this well at this location pursuant to a contract with an owner of such a mineral or working interest, or to a voluntary pooling agreement or a compulsory pooling order heretofore entered by the division.

Signature: *Rachael Overbey* Date: 5/6/2024  
Printed Name: Rachael Overbey  
E-mail Address: roverbey@fmellc.com

**<sup>18</sup> SURVEYOR CERTIFICATION**  
I hereby certify that the well location shown on this plat was plotted from field notes of actual surveys made by me or under my supervision, and that the same is true and correct to the best of my belief.

January 5, 2024  
Date of Survey  
Signature and Seal of Professional Surveyor:

**PAUL BUCHELE**  
NEW MEXICO  
23782  
01-09-24  
PROFESSIONAL SURVEYOR

Certificate Number:

**District I**  
1625 N. French Dr., Hobbs, NM 88240  
Phone:(575) 393-6161 Fax:(575) 393-0720  
**District II**  
811 S. First St., Artesia, NM 88210  
Phone:(575) 748-1283 Fax:(575) 748-9720  
**District III**  
1000 Rio Brazos Rd., Aztec, NM 87410  
Phone:(505) 334-6178 Fax:(505) 334-6170  
**District IV**  
1220 S. St Francis Dr., Santa Fe, NM 87505  
Phone:(505) 476-3470 Fax:(505) 476-3462

State of New Mexico  
Energy, Minerals and Natural Resources  
Oil Conservation Division  
1220 S. St Francis Dr.  
Santa Fe, NM 87505

Form APD Conditions  
Permit 367974

PERMIT CONDITIONS OF APPROVAL

Operator Name and Address: Franklin Mountain Energy 3, LLC [331595] 44 Cook Street Denver, CO 80206	API Number: 30-025-53168
	Well: ALPHA STATE COM #801H

OCD Reviewer	Condition
pkautz	Notify OCD 24 hours prior to casing & cement
pkautz	Will require a File As Drilled C-102 and a Directional Survey with the C-104
pkautz	Once the well is spud, to prevent ground water contamination through whole or partial conduits from the surface, the operator shall drill without interruption through the fresh water zone or zones and shall immediately set in cement the water protection string
pkautz	Oil base muds are not to be used until fresh water zones are cased and cemented providing isolation from the oil or diesel. This includes synthetic oils. Oil based mud, drilling fluids and solids must be contained in a steel closed loop system
pkautz	Cement is required to circulate on both surface and intermediate1 strings of casing
pkautz	If cement does not circulate on any string, a CBL is required for that string of casing
pkautz	The Operator is to notify NMOCD by sundry (Form C-103) within ten (10) days of the well being spud



## Alpha State Com 801H

1. **Geologic name of surface location:** Permian
2. **Estimated tops of important geological markers:**

Formations	PROG SS	PROG TVD	Picked TVD	delta	Potential/Issues
Cenozoic Alluvium (surface)	3,857'	30'	30'	0	Sand/Gravels/Unconsolidated
Rustler	2,043'	1,844'			Carbonates
Salado	1,794'	2,093'			Salt, Carbonate & Clastics
Base Salt	630'	3,257'			Shaley Carbonate & Shale
Yates	409'	3,477'			Anhydrite/Shale
Seven Rivers	-56'	3,942'			Interbedded Shale/Carbonate
Queen	-743'	4,630'			Sandstone & Dolomite & Anhydrite
Delaware Mtn Group	-2,290'	6,177'			Sandstone/Carb/Shale - oil/gas/water
Bone Spring Lime	-3,890'	7,776'			Shale/Carbonates - oil/gas
First Bone Spring Sand	-5,503'	9,390'			Sandstone - oil/gas/water
Second Bone Spring Carbonate	-5,731'	9,618'			Shale/Carbonates - oil/gas
Second Bone Spring Sand	-6,011'	9,898'			Sandstone - oil/gas/water
Third Bone Spring Carbonate	-6,377'	10,263'			Shale/Carbonates - oil/gas
Third Bone Spring Sand	-6,476'	10,362'			Sandstone - oil/gas/water
Wolfcamp	-6,629'	10,515'			Overpressure Shale/Sand- oil/gas
Wolfcamp B	-7,076'	10,962'			Overpressure Shale - oil/gas
<b>HZ Target</b>	<b>-7,483'</b>	<b>11,370'</b>			Overpressure Shale - oil/gas
Base Wolfcamp	-7,635'	11,522'			Overpressure Shale - oil/gas

### 3. Estimated depth of anticipated fresh water, oil or gas:

Upper Permian Sands	0- 400'	Fresh Water
Delaware Sands	6,177'	Oil
1 <sup>st</sup> Bone Spring Sand	9,390'	Oil
2 <sup>nd</sup> Bone Spring Carb	9,618'	Oil
2 <sup>nd</sup> Bone Spring Sand	9,898'	Oil
3 <sup>rd</sup> Bone Spring Sand	10,362'	Oil
Wolfcamp	10,515'	Oil
Wolfcamp B	10,962'	Oil

No other formations are expected to give up oil, gas or fresh water in measurable quantities. Surface freshwater sands will be protected by setting 13-3/8" casing at 1,894' and circulating cement back to surface.

### 4. Casing Program:

All casing strings will be run new.



Casing string	Weight	Grade	Burst	Collapse	Tension	Conn	Length	API design factor			
								Burst	Collapse	Tension	Coupling
Surface 13 3/8"	54.5	J-55	2730	1130	853	BTC 909	1,894	1.02	1.15	4.20	4.47
Intermediate 9 5/8"	40	HCL-80	7430	4230	916	BTC 1042	7,899	1.33	1.14	2.20	2.51
Production 7"	32	HCP-110	12460	10760	1025	CDC-HTQ 1053	10,822	1.75	2.12	2.30	2.36
Production 5 1/2"	20	HCP-110	12640	12200	641	CDC-HTQ 667	11,278 11,370	1.15	2.31	1.97	2.05 2.04

Tapered production string will be ran with a X-over installed at the KOP of 10,822'.

### Cementing Program:

Cementing Stage tool can be placed in the 1st Intermediate string as a contingency to ensure required TOC to surface.

To increase efficiency of drilling operations and minimize disturbance of the area the batch-drilling approach will be used.

Off-line cementing may be utilized for Surface, Intermediate, and Production strings to further optimization of drilling process and reduction of disturbance.

String Type	Hole Size	Casing		Sacks	Type of cmt	Lead			Sacks	Type of cmt	Tail			TOC	Excess
		Size	Setting Depth			Yield ft <sup>3</sup> /sk	Water gal/sk	TOC ft			Yield ft <sup>3</sup> /sk	Water gal/sk	TOC		
Surf	17.5	13.375	1,894	1012	85:15 Compass Poz, 12.8 ppg Class C, 5%Gel, 3#/sk Kol Seal, 4.64#/sk Salt	2.05	11.12	0	441	Tail, 14.8 ppg, 100% Class C, 1%CaCl <sub>2</sub> , 0.1%	1.34	6.35	1,494	100%	
Int1	12.25	9.625	7,899	1532	Lead, 11.3 ppg, HSLD 82 10% Gel, 4% STE, 2#/sk, Gyp Seal	2.74	16.31	0	201	Econolite Tail, 14.8 ppg, 100% Class C, 0.08% C-51	1.33	6.33	7,499	100%	
Prod	8.75	7	10,822	260	HSLD 9420, 10.5 ppg, Class C, 1#/sk Salt, 4% STE 1% C-45	3.99	25.51	6,899							100%
Prod	8.75	5.5	22,100						2815	HSLD 80, 13.ppg, 32#/sk Salt, 4% STE, 1#/sk Gyp Seal	1.52	7.59	10,822	50%	

### 5. Minimum Specifications for Pressure Control:



The minimum blowout preventer equipment (BOPE) shown in Exhibit #1 will consist of a single ram, mud cross and double ram-type (10,000 psi WP) preventer and an annular preventer (5,000-psi WP). Both units will be hydraulically operated, and the ram-type will be equipped with blind rams on bottom and 4 ½" x 7" variable pipe rams on top. All BOPE will be tested in accordance with Onshore Oil & Gas order No. 2.

Before drilling out of the surface casing, the ram-type BOP and accessory equipment will be tested to 5,000/250 psig and the annular preventer to 3,500/250 psig. The surface casing will be tested to 1500 psi for 30 minutes.

Before drilling out of the intermediate casing, the ram-type BOP and accessory equipment will be tested to 10,000/250 psig and the annular preventer to 3,500/250 psig.

Pipe rams will be operationally checked each 24-hour period. Blind rams will be operationally checked on each trip out of the hole. These checks will be noted on the daily tour sheets.

A hydraulically operated choke will be installed prior to drilling out of the intermediate casing shoe.

#### 6. Types and characteristics of the proposed mud system:

During this procedure we plan to use a Closed-Loop System and haul contents to the required disposal. The applicable depths and properties of the drilling fluid systems are as follows.

Depth	Type	Weight (ppg)	Viscosity	Water Loss
0 – 1,894'	Fresh - Gel	8.6-8.8	28-34	N/c
1,894' – 7,899'	Brine	8.8-10.2	28-34	N/c
7,899' – 11,722'	Brine	8.8-10.2	28-34	N/c
11,722' – 22,100' Lateral	Oil Base	9.0-13	58-68	3 - 6

The highest mud weight needed to balance formation is expected to be 9-13 ppg. In order to maintain hole stability, mud weights up to 13 ppg may be utilized.

An electronic pit volume totalizer (PVT) will be utilized on the circulating system, to monitor pit volume, flow rate, pump pressure and stroke rate.

Sufficient mud materials to maintain mud properties and meet minimum lost circulation and weight increase requirements will be kept at the wellsite at all times.

#### 7. Auxiliary well control and monitoring equipment:

(A) A kelly cock will be kept in the drill string at all times.

(B) A full opening drill pipe-stabbing valve (inside BOP) with proper drill pipe connections will be kept on the rig floor at all times.

(C) H<sub>2</sub>S monitoring and detection equipment will be utilized from surface casing point to TD.

(D) A wear bushing will be installed in the wellhead prior to drilling out of the surface casing.

#### 8. Logging, testing and coring program:

GR-CCL-CNL Will be run in cased hole during completions phase of operations.

Open-hole logs are not planned for this well.

#### 9. Abnormal conditions, pressures, temperatures and potential hazards:





The estimated bottom-hole temperature at 11,370' TVD (deepest point of the well) is 190F with an estimated maximum bottom-hole pressure (BHP) at the same point of 7,686' psig (based on 13 ppg MW). Hydrogen Sulfide may be present in the area. All necessary precautions will be taken before drilling operations commence. See Hydrogen Sulfide Plan below:

#### 10. Hydrogen Sulfide Plan:

- A. All personnel shall receive proper awareness H2S training.
- B. Briefing Area: two perpendicular areas will be designated by signs and readily accessible.
- C. Required Emergency Equipment
  - a. Well Control Equipment
    - i. Flare line 150' from wellhead to be ignited by auto ignition sparking system.
    - ii. Choke manifold with a remotely operated hydraulic choke.
    - iii. Mud/gas separator
  - b. Protective equipment for essential personnel
    - i. Breathing Apparatus
      - 1. Rescue packs (SCBA) – 1 unit shall be placed at each briefing area, 2 shall be stored in a safety trailer on site.
      - 2. Work/Escape packs – 4 packs shall be stored on the rig floor with sufficient air hose not to restrict work activity
      - 3. Emergency Escape Packs – 4 packs shall be stored in the doghouse for emergency evacuation.
    - ii. Auxiliary Rescue Equipment
      - 1. Stretcher
      - 2. Two OSHA full body harnesses
      - 3. 100 feet of 5/8 inches OSHA approved rope
      - 4. 1-20# class ABC fire extinguisher
  - c. H2S Detection and Monitoring Equipment
    - i. A stationary detector with three sensors will be placed in the doghouse if equipped, set to visually alarm at 10 ppm and audible at 14 ppm. The detector will be calibrated a minimum of every 30 days or as needed. The sensors will be placed in the following places:
      - 1. Rig Floor
      - 2. Below Rig Floor / Near BOPs
      - 3. End of flow line or where well bore fluid is being discharged (near shakers)
    - ii. If H2S is encountered, measured values and formations will be provided to the BLM.
  - d. Visual Warning Systems
    - i. One color code condition sign will be placed at the entrance to the site reflecting the possible conditions at the site.
    - ii. A colored condition flag will be on display, reflecting the current condition at the site at the time.
    - iii. Two windsocks will be placed in strategic locations, visible from all angles.
  - e. Mud Program
    - i. The Mud program will be designed to minimize the volume of H2S circulated to surface. The operator will have the necessary mud products to minimize hazards while drilling in H2S bearing zones.



- f. Metallurgy
  - i. All drill strings, casings, tubing, wellhead, blowout preventer, drilling spool, kill lines, choke manifold and lines, and valves shall be suitable for H<sub>2</sub>S service at the anticipated operating pressures to prevent sour sulfide stress cracking.
- g. Communication
  - i. Communication will be via cell phones and walkie talkies on location.

Based on concentrations of offset wells, proximity to main roads, and distance to populated areas, the radius of exposure created by a potential release was determined to be minimal and low enough to not necessitate an H<sub>2</sub>S contingency plan. This will be reevaluated during wellbore construction if H<sub>2</sub>S is observed and after the well is on production.

#### **11. Anticipated starting date and duration of operations:**

The drilling operations on the well should be finished in approximately one month. However, in order to minimize disturbance in the area and to improve efficiency Franklin Mountain is planning to drill all the wells on the pad prior to commence completion operations. To even further reduce the time heavy machinery is used the "batch drilling" method may be used. A batch drilling sequence sundry will be submitted for State approval prior to spud. A drilling rig with walking/skidding capabilities will be used.

#### **12. Disposal/environmental concerns:**

- (A) Drilled cuttings will be hauled to and disposed of in a state-certified disposal site.
- (B) Non-hazardous waste mud/cement from the drilling process will also be hauled to and disposed of in a state-certified disposal site.
- (C) Garbage will be hauled to the Pecos City Landfill.
- (D) Sewage (grey water) will be hauled to the Carlsbad City Landfill

#### **13. Wellhead:**

A multi-bowl wellhead system will be utilized.

After running the 13 3/8" surface casing, a 13-5/8" BOP/BOPE system with a minimum working pressure of 10,000 psi will be installed on the wellhead system and will be pressure tested to 250 psi low followed by a 5,000 psi pressure test. This pressure test will be repeated at least every 30 days.

The minimum working pressure of the BOP and related BOPE required for drilling below the surface casing shoe shall be 5,000 psi.

The wellhead will be installed by a third party welder while being monitored by WH vendor's representative.

All BOP equipment will be tested utilizing a conventional test plug. Not a cup or J-packer type.

A solid steel body pack-off will be utilized after running and cementing the intermediate casing string. After installation of the first intermediate string the pack-off and lower flanges will be pressure tested to 5000 psi.

Both the surface and intermediate casing strings will be tested as per NMOCD Rules to the one-third of manufacture's rated yield pressure, no less than 600 psi, but not greater than 1,500 psi.

#### **14. Additional variance requests**

- A. Casing.





1. Variance is requested to wave/reduce the centralizer requirements for the 7" and 5 ½" production casing due to the tight clearance with 8 ¾" hole.

State of New Mexico  
Energy, Minerals and Natural Resources Department

Submit Electronically  
Via E-permitting

Oil Conservation Division  
1220 South St. Francis Dr.  
Santa Fe, NM 87505

## NATURAL GAS MANAGEMENT PLAN

This Natural Gas Management Plan must be submitted with each Application for Permit to Drill (APD) for a new or recompleted well.

### Section 1 – Plan Description

Effective May 25, 2021

**I. Operator:** Franklin Mountain Energy 3, LLC **OGRID:** 331595 **Date:** 8/30/2023

**II. Type:** ☒ Original ☐ Amendment due to ☐ 19.15.27.9.D(6)(a) NMAC ☐ 19.15.27.9.D(6)(b) NMAC ☐ Other.

If Other, please describe: \_\_\_\_\_

**III. Well(s):** Provide the following information for each new or recompleted well or set of wells proposed to be drilled or proposed to be recompleted from a single well pad or connected to a central delivery point.

Well Name	API	ULSTR	Footages	Anticipated Oil BBL/D	Anticipated Gas MCF/D	Anticipated Produced Water BBL/D
See Attached Well List						

**IV. Central Delivery Point Name:** Alpha/Cable CTB [See 19.15.27.9(D)(1) NMAC]

**V. Anticipated Schedule:** Provide the following information for each new or recompleted well or set of wells proposed to be drilled or proposed to be recompleted from a single well pad or connected to a central delivery point.

Well Name	API	Spud Date	TD Reached Date	Completion Commencement Date	Initial Flow Back Date	First Production Date
See Attached Well List						

**VI. Separation Equipment:** ☒ Attach a complete description of how Operator will size separation equipment to optimize gas capture.

**VII. Operational Practices:** ☒ Attach a complete description of the actions Operator will take to comply with the requirements of Subsection A through F of 19.15.27.8 NMAC.

**VIII. Best Management Practices:** ☒ Attach a complete description of Operator's best management practices to minimize venting during active and planned maintenance.

## **Section 2 – Enhanced Plan**

### **EFFECTIVE APRIL 1, 2022**

Beginning April 1, 2022, an operator that is not in compliance with its statewide natural gas capture requirement for the applicable reporting area must complete this section.

☒ Operator certifies that it is not required to complete this section because Operator is in compliance with its statewide natural gas capture requirement for the applicable reporting area.

#### **IX. Anticipated Natural Gas Production:**

Well	API	Anticipated Average Natural Gas Rate MCF/D	Anticipated Volume of Natural Gas for the First Year MCF

#### **X. Natural Gas Gathering System (NGGS):**

Operator	System	ULSTR of Tie-in	Anticipated Gathering Start Date	Available Maximum Daily Capacity of System Segment Tie-in

**XI. Map.** ☒ Attach an accurate and legible map depicting the location of the well(s), the anticipated pipeline route(s) connecting the production operations to the existing or planned interconnect of the natural gas gathering system(s), and the maximum daily capacity of the segment or portion of the natural gas gathering system(s) to which the well(s) will be connected.

**XII. Line Capacity.** The natural gas gathering system ☐ will ☐ will not have capacity to gather 100% of the anticipated natural gas production volume from the well prior to the date of first production.

**XIII. Line Pressure.** Operator ☐ does ☐ does not anticipate that its existing well(s) connected to the same segment, or portion, of the natural gas gathering system(s) described above will continue to meet anticipated increases in line pressure caused by the new well(s).

☐ Attach Operator's plan to manage production in response to the increased line pressure.

**XIV. Confidentiality:** ☐ Operator asserts confidentiality pursuant to Section 71-2-8 NMSA 1978 for the information provided in Section 2 as provided in Paragraph (2) of Subsection D of 19.15.27.9 NMAC, and attaches a full description of the specific information for which confidentiality is asserted and the basis for such assertion.

### **Section 3 - Certifications**

**Effective May 25, 2021**

Operator certifies that, after reasonable inquiry and based on the available information at the time of submittal:

☒ Operator will be able to connect the well(s) to a natural gas gathering system in the general area with sufficient capacity to transport one hundred percent of the anticipated volume of natural gas produced from the well(s) commencing on the date of first production, taking into account the current and anticipated volumes of produced natural gas from other wells connected to the pipeline gathering system; or

☐ Operator will not be able to connect to a natural gas gathering system in the general area with sufficient capacity to transport one hundred percent of the anticipated volume of natural gas produced from the well(s) commencing on the date of first production, taking into account the current and anticipated volumes of produced natural gas from other wells connected to the pipeline gathering system.

***If Operator checks this box, Operator will select one of the following:***

**Well Shut-In.** ☐ Operator will shut-in and not produce the well until it submits the certification required by Paragraph (4) of Subsection D of 19.15.27.9 NMAC; or

**Venting and Flaring Plan.** ☐ Operator has attached a venting and flaring plan that evaluates and selects one or more of the potential alternative beneficial uses for the natural gas until a natural gas gathering system is available, including:

- (a) power generation on lease;
- (b) power generation for grid;
- (c) compression on lease;
- (d) liquids removal on lease;
- (e) reinjection for underground storage;
- (f) reinjection for temporary storage;
- (g) reinjection for enhanced oil recovery;
- (h) fuel cell production; and
- (i) other alternative beneficial uses approved by the division.

### **Section 4 - Notices**

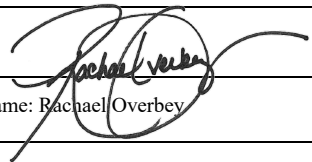
1. If, at any time after Operator submits this Natural Gas Management Plan and before the well is spud:

(a) Operator becomes aware that the natural gas gathering system it planned to connect the well(s) to has become unavailable or will not have capacity to transport one hundred percent of the production from the well(s), no later than 20 days after becoming aware of such information, Operator shall submit for OCD's approval a new or revised venting and flaring plan containing the information specified in Paragraph (5) of Subsection D of 19.15.27.9 NMAC; or

(b) Operator becomes aware that it has, cumulatively for the year, become out of compliance with its baseline natural gas capture rate or natural gas capture requirement, no later than 20 days after becoming aware of such information, Operator shall submit for OCD's approval a new or revised Natural Gas Management Plan for each well it plans to spud during the next 90 days containing the information specified in Paragraph (2) of Subsection D of 19.15.27.9 NMAC, and shall file an update for each Natural Gas Management Plan until Operator is back in compliance with its baseline natural gas capture rate or natural gas capture requirement.

2. OCD may deny or conditionally approve an APD if Operator does not make a certification, fails to submit an adequate venting and flaring plan which includes alternative beneficial uses for the anticipated volume of natural gas produced, or if OCD determines that Operator will not have adequate natural gas takeaway capacity at the time a well will be spud.

I certify that, after reasonable inquiry, the statements in and attached to this Natural Gas Management Plan are true and correct to the best of my knowledge and acknowledge that a false statement may be subject to civil and criminal penalties under the Oil and Gas Act.

Signature: 
Printed Name: Rachael Overbey
Title: Director Operations Planning & Regulatory
E-mail Address: roverbey@fmelle.com
Date: 1/2/2024
Phone: 720-414-7868
<b>OIL CONSERVATION DIVISION</b> <b>(Only applicable when submitted as a standalone form)</b>
Approved By:
Title:
Approval Date:
Conditions of Approval:

**NATURAL GAS MANAGEMENT PLAN**

**III. Well(s):** Provide the following information for each new or recompleted well or set of wells proposed to be drilled or proposed to be recompleted from a single well pad or connected to a central delivery point.

Well Name	API 14 Digit	ULSTR	Surface Location FTG	Anticipated Oil BBL/D	Anticipated Gas MCF/D	Anticipated Produced Water BBL/D
Alpha State Com 301H	TBD	C-09-19S-35E	310 FNL 1470 FWL	800 +/-	700 +/-	2500 +/-
Alpha State Com 302H	TBD	C-09-19S-35E	50 FNL 2265 FWL	800 +/-	700 +/-	2500 +/-
Alpha State Com 303H	30-025-52406	P-04-19S-35E	452 FSL 1395 FEL	800 +/-	700 +/-	2500 +/-
Alpha State Com 304H	30-025-51990	P-04-19S-35E	452 FSL 1245 FEL	800 +/-	700 +/-	2500 +/-
Alpha State Com 501H	TBD	C-09-19S-35E	310 FNL 1410 FWL	800 +/-	700 +/-	2500 +/-
Alpha State Com 502H	TBD	C-09-19S-35E	50 FNL 2205 FWL	800 +/-	700 +/-	2500 +/-
Alpha State Com 503H	30-025-52407	P-04-19S-35E	452 FSL 1365 FEL	800 +/-	700 +/-	2500 +/-
Alpha State Com 504H	30-025-52408	P-04-19S-35E	452 FSL 1305 FEL	800 +/-	700 +/-	2500 +/-
Alpha State Com 601H	TBD	C-09-19S-35E	310 FNL 1500 FWL	800 +/-	700 +/-	2500 +/-
Alpha State Com 602H	TBD	C-09-19S-35E	50 FNL 2295 FWL	800 +/-	700 +/-	2500 +/-
Alpha State Com 603H	30-025-52409	P-04-19S-35E	552 FSL 1365 FEL	800 +/-	700 +/-	2500 +/-
Alpha State Com 604H	30-025-52410	P-04-19S-35E	552 FSL 1305 FEL	800 +/-	700 +/-	2500 +/-
Alpha State Com 701H	TBD	C-09-19S-35E	310 FNL 1440 FWL	800 +/-	700 +/-	2500 +/-
Alpha State Com 702H	TBD	C-09-19S-35E	50 FNL 2235 FWL	800 +/-	700 +/-	2500 +/-
Alpha State Com 703H	30-025-52411	P-04-19S-35E	452 FSL 1335 FEL	800 +/-	700 +/-	2500 +/-
Alpha State Com 704H	30-025-52412	P-04-19S-35E	452 FSL 1275 FEL	800 +/-	700 +/-	2500 +/-
Alpha State Com 801H	TBD	C-09-19S-35E	310 FNL 1530 FWL	800 +/-	700 +/-	2500 +/-
Alpha State Com 802H	TBD	C-09-19S-35E	50 FNL 2325 FWL	800 +/-	700 +/-	2500 +/-
Alpha State Com 803H	30-025-52413	P-04-19S-35E	552 FSL 1335 FEL	800 +/-	700 +/-	2500 +/-
Alpha State Com 804H	30-025-52414	P-04-19S-35E	552 FSL 1275 FEL	800 +/-	700 +/-	2500 +/-

**V. Anticipated Schedule:** Provide the following information for each new or recompleted well or set of wells proposed to be drilled or proposed to be

Well Name	API 14 Digit	Spud Date (Batch Drilling)	TD Reached Date	Completion Commencement Date	Initial Flowback Date	First Production Date
Alpha State Com 301H	TBD	6/21/2024	9/4/2024	9/29/2024	10/9/2024	10/11/2024
Alpha State Com 302H	TBD	6/1/2024	8/15/2024	9/9/2024	9/19/2024	9/21/2024
Alpha State Com 303H	30-025-52406	8/15/2024	12/28/2024	1/22/2025	2/1/2025	2/3/2025
Alpha State Com 304H (Producing)	30-025-51990	N/A	N/A	N/A	N/A	N/A
Alpha State Com 501H	TBD	6/21/2024	9/4/2024	9/29/2024	10/9/2024	10/11/2024
Alpha State Com 502H	TBD	6/1/2024	8/15/2024	8/30/2024	9/9/2024	9/11/2024
Alpha State Com 503H	30-025-52407	8/15/2024	12/28/2024	1/22/2025	2/1/2025	2/3/2025
Alpha State Com 504H	30-025-52408	8/15/2024	12/28/2024	1/22/2025	2/1/2025	2/3/2025
Alpha State Com 601H	TBD	6/21/2024	9/4/2024	9/29/2024	10/9/2024	10/11/2024
Alpha State Com 602H	TBD	6/1/2024	8/15/2024	9/9/2024	9/19/2024	9/21/2024
Alpha State Com 603H	30-025-52409	8/15/2024	12/28/2024	1/22/2025	2/1/2025	2/3/2025
Alpha State Com 604H	30-025-52410	8/15/2024	12/28/2024	1/22/2025	2/1/2025	2/3/2025
Alpha State Com 701H	TBD	6/21/2024	9/4/2024	9/29/2024	10/9/2024	10/11/2024
Alpha State Com 702H	TBD	6/1/2024	8/15/2024	9/9/2024	9/19/2024	9/21/2024
Alpha State Com 703H	30-025-52411	8/15/2024	12/28/2024	1/22/2025	2/1/2025	2/3/2025
Alpha State Com 704H	TBD	8/15/2024	12/28/2024	1/22/2025	2/1/2025	2/3/2025
Alpha State Com 801H	TBD	6/21/2024	9/4/2024	9/29/2024	10/9/2024	10/11/2024
Alpha State Com 802H	TBD	6/1/2024	8/15/2024	9/9/2024	9/19/2024	9/21/2024
Alpha State Com 803H	30-025-52413	8/15/2024	12/28/2024	1/22/2025	2/1/2025	2/3/2025
Alpha State Com 804H	30-025-52414	8/15/2024	12/28/2024	1/22/2025	2/1/2025	2/3/2025





## Natural Gas Management Plan

### Items VI-VIII

#### **VI. Separation Equipment: Attach a complete description of how Operator will size separation equipment to optimize gas capture.**

- Data from surrounding wells is used to generate type curves which provides the basis for expected gas rates during initial production, peak production and then the natural decline.
- Separation equipment will be sized to provide adequate separation for peak production.
- Facility design includes multiple stages of separation to minimize gas waste. Wells flow through a 3-phase separator to remove gas. Gas from the 3 Phase separators are then sent through a gas scrubber before being route to treatment and/or sales.
- Industry standard sizing calculations are used for gas-liquid separation and liquid-liquid separation.

#### **VII. Operational Practices: Attach a complete description of the actions Operator will take to comply with the requirements of Subsection A through F 19.15.27.8 NMAC.**

- Drilling, completion and production setup is designed to minimize the waste of natural gas and to flare instead of vent.
- *Drilling Operations:*
  - Natural gas encountered will be flared instead of vented unless there is an equipment malfunction and/or to avoid risking safety or the environment.
  - Flares will be properly sized and placed at least 100' from the nearest surface hole on the pad.
- *Completions/Recompletions Operations:*
  - Flowback operations will not commence until connected to a properly sized gas gathering system.
  - During initial flowback wells are routed to the separation equipment as soon as technically feasible to minimize gas waste.
  - During separation flowback wells are routed to the separation equipment to minimize gas waste.
  - Gas sales is maximized. Gas will be flared instead of vented during an emergency or malfunction to avoid posing a risk to operations or personnel safety.
  - Flares are properly sized with a continuous pilot.
- *Production Operations:*
  - Gas sales will be maximized. Gas will be flared instead of vented during an emergency or malfunction to avoid posing a risk to operations or personnel safety.
  - After a well is stabilized from liquid unloading, the well will be turned back into the collection system.
- *Performance Standards:*
  - The facility will be designed to handle peak production rates and pressures.
  - All tanks will have automatic gauging equipment.
  - Flares will be designed to ensure proper combustion and will have continuous pilots. Flares will be located 100' from nearest surface hole on the pad and storage tanks.
  - Weekly AVOs will be performed, and any leaking thief hatches will be cleaned and properly re-sealed.
- *Measurement and Calibration:*



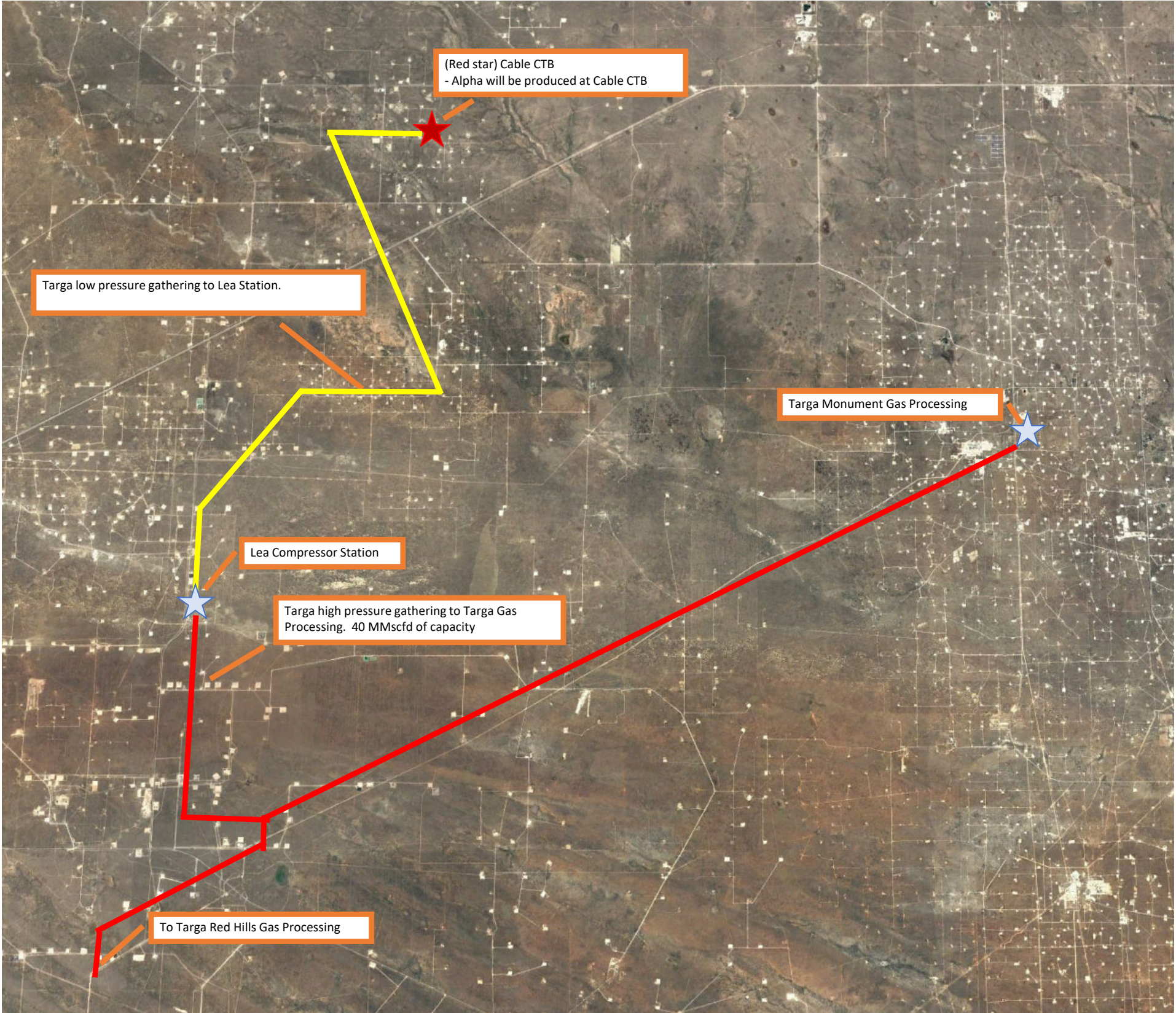
- All volume that is flared and vented that is not measured will be estimated.
- When metering is not practical due to low pressure/rate, all vented or flared volumes will be estimated.
- Measurement will conform to industry standards. Measurement will not be bypassed except for purposes of inspection or calibration.

**VIII. Best Management Practices: Attach a complete description of Operator's best management practices to minimize venting during active and planned maintenance.**

- Venting will be minimized during active and planned maintenance.
- Systems and equipment requiring maintenance will be isolated and blown down to sales and then flare before any remaining gas is vented in an effort to minimize waste and venting.
- Downhole maintenance will use best management practices to minimize vent.



Alpha NGMP Map  
Sep 2023  
- Capacities reflected are FME's understanding of 3rd party midstream system capacities







## **Franklin Mountain Energy LLC**

**PV\_Lea County, NM(N83-NME3001)**

**Alpha\_Cable West**

**(WA05) Alpha State Com 801H - Slot (WA05)**

**801H**

**Plan: APD-Rev01**

## **Standard Planning Report - Geographic**

**22 March, 2024**



## Planning Report - Geographic

<b>Database:</b>	TZ USA 17.2	<b>Local Co-ordinate Reference:</b>	Site Alpha_Cable West
<b>Company:</b>	Franklin Mountain Energy LLC	<b>TVD Reference:</b>	3857+30 @ 3887.00usft
<b>Project:</b>	PV_Lea County, NM(N83-NME3001)	<b>MD Reference:</b>	3857+30 @ 3887.00usft
<b>Site:</b>	Alpha_Cable West	<b>North Reference:</b>	Grid
<b>Well:</b>	(WA05) Alpha State Com 801H	<b>Survey Calculation Method:</b>	Minimum Curvature
<b>Wellbore:</b>	801H		
<b>Design:</b>	APD-Rev01		

<b>Project</b>	PV_Lea County, NM(N83-NME3001)		
<b>Map System:</b>	US State Plane 1983	<b>System Datum:</b>	Mean Sea Level
<b>Geo Datum:</b>	North American Datum 1983		
<b>Map Zone:</b>	New Mexico Eastern Zone		

Site	Alpha_Cable West				
Site Position:		Northing:	612,756.93 usft	Latitude:	32.68151517
From:	Map	Easting:	808,179.69 usft	Longitude:	-103.46605645
Position Uncertainty:	0.00 usft	Slot Radius:	13-3/16 "		

Well		(WA05) Alpha State Com 801H - Slot (WA05)				
Well Position	+N/-S	0.45 usft	Northing:	612,757.38 usft	Latitude:	32.68151506
	+E/-W	59.99 usft	Easting:	808,239.68 usft	Longitude:	-103.46586148
Position Uncertainty		0.00 usft	Wellhead Elevation:	usft	Ground Level:	3,857.00 usft
Grid Convergence:		0.47 °				

<b>Wellbore</b>	801H				
<b>Magnetics</b>	<b>Model Name</b>	<b>Sample Date</b>	<b>Declination (°)</b>	<b>Dip Angle (°)</b>	<b>Field Strength (nT)</b>
	IGRF2020	3/17/2024	6.21	60.24	47,483.68658716

<b>Design</b>	APD-Rev01				
<b>Audit Notes:</b>					
<b>Version:</b>	<b>Phase:</b>	PLAN	<b>Tie On Depth:</b>	0.00	
<b>Vertical Section:</b>	<b>Depth From (TVD) (usft)</b>	<b>+N/-S (usft)</b>	<b>+E/-W (usft)</b>	<b>Direction (°)</b>	
	0.00	0.45	59.99	359.52	

<b>Plan Survey Tool Program</b>	<b>Date</b>	3/22/2024			
<b>Depth From (usft)</b>	<b>Depth To (usft)</b>	<b>Survey (Wellbore)</b>	<b>Tool Name</b>	<b>Remarks</b>	
1	0.00	22,100.85 APD-Rev01 (801H)	MWD+IFR1+MS OWSG MWD + IFR1 + Multi-S		



Planning Report - Geographic

Database:	TZ USA 17.2	Local Co-ordinate Reference:	Site Alpha_Cable West
Company:	Franklin Mountain Energy LLC	TVD Reference:	3857+30 @ 3887.00usft
Project:	PV_Lea County, NM(N83-NME3001)	MD Reference:	3857+30 @ 3887.00usft
Site:	Alpha_Cable West	North Reference:	Grid
Well:	(WA05) Alpha State Com 801H	Survey Calculation Method:	Minimum Curvature
Wellbore:	801H		
Design:	APD-Rev01		

Plan Sections										
Measured Depth (usft)	Inclination (°)	Azimuth (°)	Vertical Depth (usft)	+N/-S (usft)	+E/-W (usft)	Dogleg Rate (°/100usft)	Build Rate (°/100usft)	Turn Rate (°/100usft)	TFO (°)	Target
0.00	0.00	0.00	0.00	0.45	59.99	0.00	0.00	0.00	0.00	
2,000.00	0.00	0.00	2,000.00	0.45	59.99	0.00	0.00	0.00	0.00	
2,347.15	5.21	253.48	2,346.67	-4.03	44.88	1.50	1.50	0.00	253.48	
8,003.82	5.21	253.48	7,980.00	-149.98	-447.33	0.00	0.00	0.00	0.00	
8,524.54	0.00	0.00	8,500.00	-156.70	-470.00	1.00	-1.00	0.00	180.00	
10,821.58	0.00	0.00	10,797.04	-156.70	-470.00	0.00	0.00	0.00	0.00	
11,721.58	90.00	344.50	11,370.00	395.42	-623.12	10.00	10.00	0.00	344.50	
12,472.39	90.00	359.52	11,370.00	1,136.81	-727.21	2.00	0.00	2.00	90.00	
22,100.85	90.00	359.52	11,370.00	10,764.93	-808.50	0.00	0.00	0.00	0.00	02-PBHL(APSC-801H)





## Planning Report - Geographic

<b>Database:</b>	TZ USA 17.2	<b>Local Co-ordinate Reference:</b>	Site Alpha_Cable West
<b>Company:</b>	Franklin Mountain Energy LLC	<b>TVD Reference:</b>	3857+30 @ 3887.00usft
<b>Project:</b>	PV_Lea County, NM(N83-NME3001)	<b>MD Reference:</b>	3857+30 @ 3887.00usft
<b>Site:</b>	Alpha_Cable West	<b>North Reference:</b>	Grid
<b>Well:</b>	(WA05) Alpha State Com 801H	<b>Survey Calculation Method:</b>	Minimum Curvature
<b>Wellbore:</b>	801H		
<b>Design:</b>	APD-Rev01		

Planned Survey									
Measured Depth (usft)	Inclination (°)	Azimuth (°)	Vertical Depth (usft)	+N/-S (usft)	+E/-W (usft)	Map Northing (usft)	Map Easting (usft)	Latitude	Longitude
0.00	0.00	0.00	0.00	0.45	59.99	612,757.38	808,239.68	32.68151506	-103.46586148
30.00	0.00	0.00	30.00	0.45	59.99	612,757.38	808,239.68	32.68151506	-103.46586148
<b>Cenozoic Alluvium (surface)</b>									
100.00	0.00	0.00	100.00	0.45	59.99	612,757.38	808,239.68	32.68151506	-103.46586148
200.00	0.00	0.00	200.00	0.45	59.99	612,757.38	808,239.68	32.68151506	-103.46586148
300.00	0.00	0.00	300.00	0.45	59.99	612,757.38	808,239.68	32.68151506	-103.46586148
400.00	0.00	0.00	400.00	0.45	59.99	612,757.38	808,239.68	32.68151506	-103.46586148
500.00	0.00	0.00	500.00	0.45	59.99	612,757.38	808,239.68	32.68151506	-103.46586148
600.00	0.00	0.00	600.00	0.45	59.99	612,757.38	808,239.68	32.68151506	-103.46586148
700.00	0.00	0.00	700.00	0.45	59.99	612,757.38	808,239.68	32.68151506	-103.46586148
800.00	0.00	0.00	800.00	0.45	59.99	612,757.38	808,239.68	32.68151506	-103.46586148
900.00	0.00	0.00	900.00	0.45	59.99	612,757.38	808,239.68	32.68151506	-103.46586148
1,000.00	0.00	0.00	1,000.00	0.45	59.99	612,757.38	808,239.68	32.68151506	-103.46586148
1,100.00	0.00	0.00	1,100.00	0.45	59.99	612,757.38	808,239.68	32.68151506	-103.46586148
1,200.00	0.00	0.00	1,200.00	0.45	59.99	612,757.38	808,239.68	32.68151506	-103.46586148
1,300.00	0.00	0.00	1,300.00	0.45	59.99	612,757.38	808,239.68	32.68151506	-103.46586148
1,400.00	0.00	0.00	1,400.00	0.45	59.99	612,757.38	808,239.68	32.68151506	-103.46586148
1,500.00	0.00	0.00	1,500.00	0.45	59.99	612,757.38	808,239.68	32.68151506	-103.46586148
1,600.00	0.00	0.00	1,600.00	0.45	59.99	612,757.38	808,239.68	32.68151506	-103.46586148
1,700.00	0.00	0.00	1,700.00	0.45	59.99	612,757.38	808,239.68	32.68151506	-103.46586148
1,800.00	0.00	0.00	1,800.00	0.45	59.99	612,757.38	808,239.68	32.68151506	-103.46586148
1,844.00	0.00	0.00	1,844.00	0.45	59.99	612,757.38	808,239.68	32.68151506	-103.46586148
<b>Rustler</b>									
1,900.00	0.00	0.00	1,900.00	0.45	59.99	612,757.38	808,239.68	32.68151506	-103.46586148
2,000.00	0.00	0.00	2,000.00	0.45	59.99	612,757.38	808,239.68	32.68151506	-103.46586148
2,093.01	1.40	253.48	2,093.00	0.13	58.90	612,757.06	808,238.59	32.68151420	-103.46586501
<b>Salado</b>									
2,100.00	1.50	253.48	2,099.99	0.08	58.74	612,757.01	808,238.42	32.68151406	-103.46586556
2,200.00	3.00	253.48	2,199.91	-1.04	54.97	612,755.90	808,234.66	32.68151108	-103.46587783
2,300.00	4.50	253.48	2,299.69	-2.90	48.70	612,754.04	808,228.39	32.68150611	-103.46589825
2,347.15	5.21	253.48	2,346.67	-4.03	44.88	612,752.90	808,224.56	32.68150308	-103.46591071
2,400.00	5.21	253.48	2,399.30	-5.40	40.28	612,751.54	808,219.97	32.68149944	-103.46592569
2,500.00	5.21	253.48	2,498.89	-7.98	31.58	612,748.96	808,211.26	32.68149254	-103.46595404
2,600.00	5.21	253.48	2,598.48	-10.56	22.87	612,746.38	808,202.56	32.68148565	-103.46598239
2,700.00	5.21	253.48	2,698.07	-13.14	14.17	612,743.80	808,193.86	32.68147875	-103.46601073
2,800.00	5.21	253.48	2,797.65	-15.72	5.47	612,741.22	808,185.16	32.68147186	-103.46603908
2,900.00	5.21	253.48	2,897.24	-18.30	-3.23	612,738.64	808,176.46	32.68146496	-103.46606743
3,000.00	5.21	253.48	2,996.83	-20.88	-11.93	612,736.06	808,167.76	32.68145806	-103.46609577
3,100.00	5.21	253.48	3,096.42	-23.46	-20.63	612,733.48	808,159.06	32.68145117	-103.46612412
3,200.00	5.21	253.48	3,196.00	-26.04	-29.33	612,730.90	808,150.35	32.68144427	-103.46615246
3,261.25	5.21	253.48	3,257.00	-27.62	-34.66	612,729.32	808,145.03	32.68144005	-103.46616983
<b>Base Salt</b>									
3,300.00	5.21	253.48	3,295.59	-28.62	-38.03	612,728.32	808,141.65	32.68143738	-103.46618081
3,400.00	5.21	253.48	3,395.18	-31.20	-46.74	612,725.74	808,132.95	32.68143048	-103.46620916
3,482.16	5.21	253.48	3,477.00	-33.32	-53.89	612,723.62	808,125.80	32.68142482	-103.46623245
<b>Yates</b>									
3,500.00	5.21	253.48	3,494.76	-33.78	-55.44	612,723.16	808,124.25	32.68142359	-103.46623750
3,600.00	5.21	253.48	3,594.35	-36.36	-64.14	612,720.58	808,115.55	32.68141669	-103.46626585
3,700.00	5.21	253.48	3,693.94	-38.94	-72.84	612,718.00	808,106.85	32.68140980	-103.46629420
3,800.00	5.21	253.48	3,793.53	-41.52	-81.54	612,715.42	808,098.15	32.68140290	-103.46632254
3,900.00	5.21	253.48	3,893.11	-44.10	-90.24	612,712.84	808,089.45	32.68139600	-103.46635089
3,949.09	5.21	253.48	3,942.00	-45.36	-94.51	612,711.57	808,085.17	32.68139262	-103.46636480
<b>Seven Rivers</b>									
4,000.00	5.21	253.48	3,992.70	-46.68	-98.94	612,710.26	808,080.74	32.68138911	-103.46637924



## Planning Report - Geographic

<b>Database:</b>	TZ USA 17.2	<b>Local Co-ordinate Reference:</b>	Site Alpha_Cable West
<b>Company:</b>	Franklin Mountain Energy LLC	<b>TVD Reference:</b>	3857+30 @ 3887.00usft
<b>Project:</b>	PV_Lea County, NM(N83-NME3001)	<b>MD Reference:</b>	3857+30 @ 3887.00usft
<b>Site:</b>	Alpha_Cable West	<b>North Reference:</b>	Grid
<b>Well:</b>	(WA05) Alpha State Com 801H	<b>Survey Calculation Method:</b>	Minimum Curvature
<b>Wellbore:</b>	801H		
<b>Design:</b>	APD-Rev01		

Planned Survey										
Measured			Vertical			Map	Map			
Depth (usft)	Inclination (°)	Azimuth (°)	Depth (usft)	+N/-S (usft)	+E/-W (usft)	Northing (usft)	Easting (usft)	Latitude	Longitude	
4,100.00	5.21	253.48	4,092.29	-49.26	-107.65	612,707.68	808,072.04	32.68138221	-103.46640758	
4,200.00	5.21	253.48	4,191.88	-51.84	-116.35	612,705.10	808,063.34	32.68137532	-103.46643593	
4,300.00	5.21	253.48	4,291.46	-54.42	-125.05	612,702.52	808,054.64	32.68136842	-103.46646427	
4,400.00	5.21	253.48	4,391.05	-57.00	-133.75	612,699.94	808,045.94	32.68136153	-103.46649262	
4,500.00	5.21	253.48	4,490.64	-59.58	-142.45	612,697.36	808,037.24	32.68135463	-103.46652097	
4,600.00	5.21	253.48	4,590.22	-62.16	-151.15	612,694.78	808,028.54	32.68134773	-103.46654931	
4,639.94	5.21	253.48	4,630.00	-63.19	-154.63	612,693.75	808,025.06	32.68134498	-103.46656063	
Queen										
4,700.00	5.21	253.48	4,689.81	-64.74	-159.85	612,692.20	808,019.83	32.68134084	-103.46657766	
4,800.00	5.21	253.48	4,789.40	-67.32	-168.55	612,689.62	808,011.13	32.68133394	-103.46660601	
4,900.00	5.21	253.48	4,888.99	-69.90	-177.26	612,687.04	808,002.43	32.68132705	-103.46663435	
5,000.00	5.21	253.48	4,988.57	-72.48	-185.96	612,684.46	807,993.73	32.68132015	-103.46666270	
5,100.00	5.21	253.48	5,088.16	-75.06	-194.66	612,681.88	807,985.03	32.68131326	-103.46669104	
5,200.00	5.21	253.48	5,187.75	-77.64	-203.36	612,679.30	807,976.33	32.68130636	-103.46671939	
5,300.00	5.21	253.48	5,287.34	-80.22	-212.06	612,676.72	807,967.63	32.68129946	-103.46674774	
5,400.00	5.21	253.48	5,386.92	-82.80	-220.76	612,674.14	807,958.93	32.68129257	-103.46677608	
5,500.00	5.21	253.48	5,486.51	-85.38	-229.46	612,671.56	807,950.22	32.68128567	-103.46680443	
5,600.00	5.21	253.48	5,586.10	-87.96	-238.17	612,668.98	807,941.52	32.68127878	-103.46683278	
5,700.00	5.21	253.48	5,685.69	-90.54	-246.87	612,666.40	807,932.82	32.68127188	-103.46686112	
5,800.00	5.21	253.48	5,785.27	-93.12	-255.57	612,663.82	807,924.12	32.68126499	-103.46688947	
5,900.00	5.21	253.48	5,884.86	-95.70	-264.27	612,661.24	807,915.42	32.68125809	-103.46691781	
6,000.00	5.21	253.48	5,984.45	-98.28	-272.97	612,658.66	807,906.72	32.68125119	-103.46694616	
6,100.00	5.21	253.48	6,084.03	-100.86	-281.67	612,656.08	807,898.02	32.68124430	-103.46697451	
6,193.35	5.21	253.48	6,177.00	-103.27	-289.79	612,653.67	807,889.89	32.68123786	-103.46700097	
Delaware Mtn Group										
6,200.00	5.21	253.48	6,183.62	-103.44	-290.37	612,653.50	807,889.31	32.68123740	-103.46700285	
6,300.00	5.21	253.48	6,283.21	-106.02	-299.07	612,650.92	807,880.61	32.68123051	-103.46703120	
6,400.00	5.21	253.48	6,382.80	-108.60	-307.78	612,648.34	807,871.91	32.68122361	-103.46705955	
6,500.00	5.21	253.48	6,482.38	-111.18	-316.48	612,645.76	807,863.21	32.68121671	-103.46708789	
6,600.00	5.21	253.48	6,581.97	-113.76	-325.18	612,643.18	807,854.51	32.68120982	-103.46711624	
6,700.00	5.21	253.48	6,681.56	-116.34	-333.88	612,640.60	807,845.81	32.68120292	-103.46714458	
6,800.00	5.21	253.48	6,781.15	-118.92	-342.58	612,638.02	807,837.11	32.68119603	-103.46717293	
6,900.00	5.21	253.48	6,880.73	-121.50	-351.28	612,635.44	807,828.41	32.68118913	-103.46720128	
7,000.00	5.21	253.48	6,980.32	-124.08	-359.98	612,632.86	807,819.70	32.68118224	-103.46722962	
7,100.00	5.21	253.48	7,079.91	-126.66	-368.69	612,630.28	807,811.00	32.68117534	-103.46725797	
7,200.00	5.21	253.48	7,179.49	-129.24	-377.39	612,627.69	807,802.30	32.68116844	-103.46728632	
7,300.00	5.21	253.48	7,279.08	-131.82	-386.09	612,625.11	807,793.60	32.68116155	-103.46731466	
7,400.00	5.21	253.48	7,378.67	-134.40	-394.79	612,622.53	807,784.90	32.68115465	-103.46734301	
7,500.00	5.21	253.48	7,478.26	-136.98	-403.49	612,619.95	807,776.20	32.68114776	-103.46737135	
7,600.00	5.21	253.48	7,577.84	-139.56	-412.19	612,617.37	807,767.50	32.68114086	-103.46739970	
7,700.00	5.21	253.48	7,677.43	-142.14	-420.89	612,614.79	807,758.79	32.68113396	-103.46742805	
7,798.98	5.21	253.48	7,776.00	-144.69	-429.51	612,612.24	807,750.18	32.68112714	-103.46745610	
Bone Spring Lime										
7,800.00	5.21	253.48	7,777.02	-144.72	-429.59	612,612.21	807,750.09	32.68112707	-103.46745639	
7,900.00	5.21	253.48	7,876.61	-147.30	-438.30	612,609.63	807,741.39	32.68112017	-103.46748474	
8,003.82	5.21	253.48	7,980.00	-149.98	-447.33	612,606.96	807,732.36	32.68111301	-103.46751417	
8,100.00	4.25	253.48	8,075.85	-152.23	-454.93	612,604.70	807,724.76	32.68110699	-103.46753892	
8,200.00	3.25	253.48	8,175.63	-154.09	-461.19	612,602.85	807,718.50	32.68110203	-103.46755932	
8,300.00	2.25	253.48	8,275.52	-155.45	-465.78	612,601.48	807,713.91	32.68109839	-103.46757428	
8,400.00	1.25	253.48	8,375.47	-156.32	-468.70	612,600.62	807,710.99	32.68109608	-103.46758379	
8,500.00	0.25	253.48	8,475.46	-156.69	-469.95	612,600.25	807,709.74	32.68109509	-103.46758786	
8,524.54	0.00	0.00	8,500.00	-156.70	-470.00	612,600.23	807,709.69	32.68109505	-103.46758802	
8,600.00	0.00	0.00	8,575.46	-156.70	-470.00	612,600.23	807,709.69	32.68109505	-103.46758802	
8,700.00	0.00	0.00	8,675.46	-156.70	-470.00	612,600.23	807,709.69	32.68109505	-103.46758802	



## Planning Report - Geographic

<b>Database:</b>	TZ USA 17.2	<b>Local Co-ordinate Reference:</b>	Site Alpha_Cable West
<b>Company:</b>	Franklin Mountain Energy LLC	<b>TVD Reference:</b>	3857+30 @ 3887.00usft
<b>Project:</b>	PV_Lea County, NM(N83-NME3001)	<b>MD Reference:</b>	3857+30 @ 3887.00usft
<b>Site:</b>	Alpha_Cable West	<b>North Reference:</b>	Grid
<b>Well:</b>	(WA05) Alpha State Com 801H	<b>Survey Calculation Method:</b>	Minimum Curvature
<b>Wellbore:</b>	801H		
<b>Design:</b>	APD-Rev01		

Planned Survey									
Measured Depth (usft)	Inclination (°)	Azimuth (°)	Vertical Depth (usft)	+N/-S (usft)	+E/-W (usft)	Map Northing (usft)	Map Easting (usft)	Latitude	Longitude
8,800.00	0.00	0.00	8,775.46	-156.70	-470.00	612,600.23	807,709.69	32.68109505	-103.46758802
8,900.00	0.00	0.00	8,875.46	-156.70	-470.00	612,600.23	807,709.69	32.68109505	-103.46758802
9,000.00	0.00	0.00	8,975.46	-156.70	-470.00	612,600.23	807,709.69	32.68109505	-103.46758802
9,100.00	0.00	0.00	9,075.46	-156.70	-470.00	612,600.23	807,709.69	32.68109505	-103.46758802
9,200.00	0.00	0.00	9,175.46	-156.70	-470.00	612,600.23	807,709.69	32.68109505	-103.46758802
9,300.00	0.00	0.00	9,275.46	-156.70	-470.00	612,600.23	807,709.69	32.68109505	-103.46758802
9,400.00	0.00	0.00	9,375.46	-156.70	-470.00	612,600.23	807,709.69	32.68109505	-103.46758802
9,414.54	0.00	0.00	9,390.00	-156.70	-470.00	612,600.23	807,709.69	32.68109505	-103.46758802
<b>First Bone Spring Sand</b>									
9,500.00	0.00	0.00	9,475.46	-156.70	-470.00	612,600.23	807,709.69	32.68109505	-103.46758802
9,600.00	0.00	0.00	9,575.46	-156.70	-470.00	612,600.23	807,709.69	32.68109505	-103.46758802
9,642.54	0.00	0.00	9,618.00	-156.70	-470.00	612,600.23	807,709.69	32.68109505	-103.46758802
<b>Second Bone Spring Carbonate</b>									
9,700.00	0.00	0.00	9,675.46	-156.70	-470.00	612,600.23	807,709.69	32.68109505	-103.46758802
9,800.00	0.00	0.00	9,775.46	-156.70	-470.00	612,600.23	807,709.69	32.68109505	-103.46758802
9,900.00	0.00	0.00	9,875.46	-156.70	-470.00	612,600.23	807,709.69	32.68109505	-103.46758802
9,922.54	0.00	0.00	9,898.00	-156.70	-470.00	612,600.23	807,709.69	32.68109505	-103.46758802
<b>Second Bone Spring Sand</b>									
10,000.00	0.00	0.00	9,975.46	-156.70	-470.00	612,600.23	807,709.69	32.68109505	-103.46758802
10,100.00	0.00	0.00	10,075.46	-156.70	-470.00	612,600.23	807,709.69	32.68109505	-103.46758802
10,200.00	0.00	0.00	10,175.46	-156.70	-470.00	612,600.23	807,709.69	32.68109505	-103.46758802
10,287.54	0.00	0.00	10,263.00	-156.70	-470.00	612,600.23	807,709.69	32.68109505	-103.46758802
<b>Third Bone Spring Carbonate</b>									
10,300.00	0.00	0.00	10,275.46	-156.70	-470.00	612,600.23	807,709.69	32.68109505	-103.46758802
10,386.54	0.00	0.00	10,362.00	-156.70	-470.00	612,600.23	807,709.69	32.68109505	-103.46758802
<b>Third Bone Spring Sand</b>									
10,400.00	0.00	0.00	10,375.46	-156.70	-470.00	612,600.23	807,709.69	32.68109505	-103.46758802
10,500.00	0.00	0.00	10,475.46	-156.70	-470.00	612,600.23	807,709.69	32.68109505	-103.46758802
10,539.54	0.00	0.00	10,515.00	-156.70	-470.00	612,600.23	807,709.69	32.68109505	-103.46758802
<b>Wolfcamp</b>									
10,600.00	0.00	0.00	10,575.46	-156.70	-470.00	612,600.23	807,709.69	32.68109505	-103.46758802
10,700.00	0.00	0.00	10,675.46	-156.70	-470.00	612,600.23	807,709.69	32.68109505	-103.46758802
10,800.00	0.00	0.00	10,775.46	-156.70	-470.00	612,600.23	807,709.69	32.68109505	-103.46758802
10,821.58	0.00	0.00	10,797.04	-156.70	-470.00	612,600.23	807,709.69	32.68109505	-103.46758802
<b>KOP: 10821.58' MD/ -152.70' VS/10797.04' TVD</b>									
10,850.00	2.84	344.50	10,825.45	-156.02	-470.19	612,600.91	807,709.50	32.68109692	-103.46758861
10,900.00	7.84	344.50	10,875.22	-151.54	-471.43	612,605.40	807,708.26	32.68110927	-103.46759254
10,950.00	12.84	344.50	10,924.39	-142.89	-473.83	612,614.04	807,705.86	32.68113309	-103.46760010
10,988.91	16.73	344.50	10,962.00	-133.32	-476.48	612,623.61	807,703.20	32.68115944	-103.46760847
<b>Wolfcamp B</b>									
11,000.00	17.84	344.50	10,972.59	-130.15	-477.36	612,626.79	807,702.32	32.68116819	-103.46761125
11,050.00	22.84	344.50	11,019.46	-113.40	-482.01	612,643.53	807,697.68	32.68121432	-103.46762589
11,100.00	27.84	344.50	11,064.63	-92.79	-487.72	612,664.15	807,691.96	32.68127111	-103.46764393
11,150.00	32.84	344.50	11,107.77	-68.45	-494.47	612,688.48	807,685.22	32.68133813	-103.46766521
11,200.00	37.84	344.50	11,148.54	-40.59	-502.20	612,716.34	807,677.49	32.68141488	-103.46768958
11,250.00	42.84	344.50	11,186.64	-9.41	-510.85	612,747.52	807,668.84	32.68150077	-103.46771686
11,300.00	47.84	344.50	11,221.77	24.85	-520.35	612,781.78	807,659.34	32.68159515	-103.46774683
11,350.00	52.84	344.50	11,253.67	61.93	-530.63	612,818.87	807,649.06	32.68169729	-103.46777927
11,400.00	57.84	344.50	11,282.10	101.55	-541.62	612,858.48	807,638.07	32.68180643	-103.46781392
11,450.00	62.84	344.50	11,306.83	143.41	-553.23	612,900.34	807,626.46	32.68192173	-103.46785054
11,500.00	67.84	344.50	11,327.68	187.18	-565.37	612,944.12	807,614.32	32.68204231	-103.46788883
11,550.00	72.84	344.50	11,344.50	232.54	-577.95	612,989.47	807,601.74	32.68216725	-103.46792851
11,600.00	77.84	344.50	11,357.15	279.14	-590.87	613,036.07	807,588.82	32.68229561	-103.46796927
11,650.00	82.84	344.50	11,365.53	326.62	-604.04	613,083.56	807,575.65	32.68242641	-103.46801081



## Planning Report - Geographic

<b>Database:</b>	TZ USA 17.2	<b>Local Co-ordinate Reference:</b>	Site Alpha_Cable West
<b>Company:</b>	Franklin Mountain Energy LLC	<b>TVD Reference:</b>	3857+30 @ 3887.00usft
<b>Project:</b>	PV_Lea County, NM(N83-NME3001)	<b>MD Reference:</b>	3857+30 @ 3887.00usft
<b>Site:</b>	Alpha_Cable West	<b>North Reference:</b>	Grid
<b>Well:</b>	(WA05) Alpha State Com 801H	<b>Survey Calculation Method:</b>	Minimum Curvature
<b>Wellbore:</b>	801H		
<b>Design:</b>	APD-Rev01		

Planned Survey										
Measured			Vertical			Map	Map			
Depth (usft)	Inclination (°)	Azimuth (°)	Depth (usft)	+N/-S (usft)	+E/-W (usft)	Northing (usft)	Easting (usft)	Latitude	Longitude	
11,700.00	87.84	344.50	11,369.59	374.63	-617.35	613,131.56	807,562.34	32.68255865	-103.46805280	
11,721.58	90.00	344.50	11,370.00	395.42	-623.12	613,152.35	807,556.57	32.68261592	-103.46807099	
EOC: 11721.58' MD/ 400.68' VS/11370.00' TVD - HZ Target										
11,744.19	90.00	344.95	11,370.00	417.23	-629.07	613,174.17	807,550.62	32.68267600	-103.46808977	
100FLL: 11744.19' MD/ 422.54' VS/11370.00' TVD										
11,767.92	90.00	345.43	11,370.00	440.18	-635.14	613,197.11	807,544.55	32.68273920	-103.46810887	
01-T98(APSC-801H)										
11,800.00	90.00	346.07	11,370.00	471.27	-643.04	613,228.20	807,536.65	32.68282482	-103.46813371	
11,900.00	90.00	348.07	11,370.00	568.72	-665.41	613,325.66	807,514.27	32.68309318	-103.46820386	
12,000.00	90.00	350.07	11,370.00	666.90	-684.38	613,423.84	807,495.31	32.68336344	-103.46826288	
12,100.00	90.00	352.07	11,370.00	765.69	-699.90	613,522.62	807,479.79	32.68363528	-103.46831072	
12,200.00	90.00	354.07	11,370.00	864.95	-711.97	613,621.88	807,467.72	32.68390837	-103.46834731	
12,300.00	90.00	356.07	11,370.00	964.58	-720.57	613,721.51	807,459.12	32.68418237	-103.46837260	
12,400.00	90.00	358.07	11,370.00	1,064.44	-725.68	613,821.37	807,454.01	32.68445695	-103.46838658	
12,472.39	90.00	359.52	11,370.00	1,136.81	-727.21	613,893.75	807,452.48	32.68465589	-103.46838962	
12,500.00	90.00	359.52	11,370.00	1,164.42	-727.44	613,921.35	807,452.25	32.68473178	-103.46838965	
12,600.00	90.00	359.52	11,370.00	1,264.42	-728.28	614,021.35	807,451.41	32.68500662	-103.46838974	
12,700.00	90.00	359.52	11,370.00	1,364.41	-729.13	614,121.35	807,450.56	32.68528147	-103.46838983	
12,800.00	90.00	359.52	11,370.00	1,464.41	-729.97	614,221.34	807,449.72	32.68555632	-103.46838993	
12,900.00	90.00	359.52	11,370.00	1,564.41	-730.82	614,321.34	807,448.87	32.68583117	-103.46839002	
13,000.00	90.00	359.52	11,370.00	1,664.40	-731.66	614,421.34	807,448.03	32.68610602	-103.46839012	
13,100.00	90.00	359.52	11,370.00	1,764.40	-732.50	614,521.33	807,447.18	32.68638087	-103.46839021	
13,200.00	90.00	359.52	11,370.00	1,864.40	-733.35	614,621.33	807,446.34	32.68665571	-103.46839031	
13,300.00	90.00	359.52	11,370.00	1,964.39	-734.19	614,721.33	807,445.50	32.68693056	-103.46839040	
13,400.00	90.00	359.52	11,370.00	2,064.39	-735.04	614,821.32	807,444.65	32.68720541	-103.46839050	
13,500.00	90.00	359.52	11,370.00	2,164.39	-735.88	614,921.32	807,443.81	32.68748026	-103.46839059	
13,600.00	90.00	359.52	11,370.00	2,264.38	-736.73	615,021.32	807,442.96	32.68775511	-103.46839068	
13,700.00	90.00	359.52	11,370.00	2,364.38	-737.57	615,121.31	807,442.12	32.68802995	-103.46839078	
13,800.00	90.00	359.52	11,370.00	2,464.37	-738.41	615,221.31	807,441.27	32.68830480	-103.46839087	
13,900.00	90.00	359.52	11,370.00	2,564.37	-739.26	615,321.30	807,440.43	32.68857965	-103.46839097	
14,000.00	90.00	359.52	11,370.00	2,664.37	-740.10	615,421.30	807,439.58	32.68885450	-103.46839106	
14,100.00	90.00	359.52	11,370.00	2,764.36	-740.95	615,521.30	807,438.74	32.68912935	-103.46839115	
14,200.00	90.00	359.52	11,370.00	2,864.36	-741.79	615,621.29	807,437.90	32.68940419	-103.46839125	
14,300.00	90.00	359.52	11,370.00	2,964.36	-742.64	615,721.29	807,437.05	32.68967904	-103.46839134	
14,400.00	90.00	359.52	11,370.00	3,064.35	-743.48	615,821.29	807,436.21	32.68995389	-103.46839144	
14,500.00	90.00	359.52	11,370.00	3,164.35	-744.32	615,921.28	807,435.36	32.69022874	-103.46839153	
14,600.00	90.00	359.52	11,370.00	3,264.35	-745.17	616,021.28	807,434.52	32.69050359	-103.46839163	
14,700.00	90.00	359.52	11,370.00	3,364.34	-746.01	616,121.28	807,433.67	32.69077843	-103.46839172	
14,800.00	90.00	359.52	11,370.00	3,464.34	-746.86	616,221.27	807,432.83	32.69105328	-103.46839181	
14,900.00	90.00	359.52	11,370.00	3,564.34	-747.70	616,321.27	807,431.99	32.69132813	-103.46839191	
15,000.00	90.00	359.52	11,370.00	3,664.33	-748.55	616,421.27	807,431.14	32.69160298	-103.46839200	
15,100.00	90.00	359.52	11,370.00	3,764.33	-749.39	616,521.26	807,430.30	32.69187783	-103.46839210	
15,200.00	90.00	359.52	11,370.00	3,864.32	-750.23	616,621.26	807,429.45	32.69215267	-103.46839219	
15,300.00	90.00	359.52	11,370.00	3,964.32	-751.08	616,721.25	807,428.61	32.69242752	-103.46839228	
15,400.00	90.00	359.52	11,370.00	4,064.32	-751.92	616,821.25	807,427.76	32.69270237	-103.46839238	
15,500.00	90.00	359.52	11,370.00	4,164.31	-752.77	616,921.25	807,426.92	32.69297722	-103.46839247	
15,600.00	90.00	359.52	11,370.00	4,264.31	-753.61	617,021.24	807,426.08	32.69325207	-103.46839256	
15,700.00	90.00	359.52	11,370.00	4,364.31	-754.46	617,121.24	807,425.23	32.69352691	-103.46839266	
15,800.00	90.00	359.52	11,370.00	4,464.30	-755.30	617,221.24	807,424.39	32.69380176	-103.46839275	
15,900.00	90.00	359.52	11,370.00	4,564.30	-756.15	617,321.23	807,423.54	32.69407661	-103.46839285	
16,000.00	90.00	359.52	11,370.00	4,664.30	-756.99	617,421.23	807,422.70	32.69435146	-103.46839294	
16,100.00	90.00	359.52	11,370.00	4,764.29	-757.83	617,521.23	807,421.85	32.69462631	-103.46839303	
16,200.00	90.00	359.52	11,370.00	4,864.29	-758.68	617,621.22	807,421.01	32.69490115	-103.46839313	
16,300.00	90.00	359.52	11,370.00	4,964.29	-759.52	617,721.22	807,420.17	32.69517600	-103.46839322	



## Planning Report - Geographic

<b>Database:</b>	TZ USA 17.2	<b>Local Co-ordinate Reference:</b>	Site Alpha_Cable West
<b>Company:</b>	Franklin Mountain Energy LLC	<b>TVD Reference:</b>	3857+30 @ 3887.00usft
<b>Project:</b>	PV_Lea County, NM(N83-NME3001)	<b>MD Reference:</b>	3857+30 @ 3887.00usft
<b>Site:</b>	Alpha_Cable West	<b>North Reference:</b>	Grid
<b>Well:</b>	(WA05) Alpha State Com 801H	<b>Survey Calculation Method:</b>	Minimum Curvature
<b>Wellbore:</b>	801H		
<b>Design:</b>	APD-Rev01		

Planned Survey										
Measured Depth (usft)	Inclination (°)	Azimuth (°)	Vertical Depth (usft)	+N/-S (usft)	+E/-W (usft)	Map Northing (usft)	Map Easting (usft)	Latitude	Longitude	
16,400.00	90.00	359.52	11,370.00	5,064.28	-760.37	617,821.22	807,419.32	32.69545085	-103.46839332	
16,500.00	90.00	359.52	11,370.00	5,164.28	-761.21	617,921.21	807,418.48	32.69572570	-103.46839341	
16,600.00	90.00	359.52	11,370.00	5,264.27	-762.06	618,021.21	807,417.63	32.69600054	-103.46839350	
16,700.00	90.00	359.52	11,370.00	5,364.27	-762.90	618,121.21	807,416.79	32.69627539	-103.46839360	
16,800.00	90.00	359.52	11,370.00	5,464.27	-763.74	618,221.20	807,415.94	32.69655024	-103.46839369	
16,900.00	90.00	359.52	11,370.00	5,564.26	-764.59	618,321.20	807,415.10	32.69682509	-103.46839378	
17,000.00	90.00	359.52	11,370.00	5,664.26	-765.43	618,421.19	807,414.26	32.69709994	-103.46839388	
17,100.00	90.00	359.52	11,370.00	5,764.26	-766.28	618,521.19	807,413.41	32.69737478	-103.46839397	
17,200.00	90.00	359.52	11,370.00	5,864.25	-767.12	618,621.19	807,412.57	32.69764963	-103.46839406	
17,300.00	90.00	359.52	11,370.00	5,964.25	-767.97	618,721.18	807,411.72	32.69792448	-103.46839416	
17,400.00	90.00	359.52	11,370.00	6,064.25	-768.81	618,821.18	807,410.88	32.69819933	-103.46839425	
17,500.00	90.00	359.52	11,370.00	6,164.24	-769.65	618,921.18	807,410.03	32.69847417	-103.46839435	
17,600.00	90.00	359.52	11,370.00	6,264.24	-770.50	619,021.17	807,409.19	32.69874902	-103.46839444	
17,700.00	90.00	359.52	11,370.00	6,364.24	-771.34	619,121.17	807,408.35	32.69902387	-103.46839453	
17,800.00	90.00	359.52	11,370.00	6,464.23	-772.19	619,221.17	807,407.50	32.69929872	-103.46839463	
17,900.00	90.00	359.52	11,370.00	6,564.23	-773.03	619,321.16	807,406.66	32.69957356	-103.46839472	
18,000.00	90.00	359.52	11,370.00	6,664.23	-773.88	619,421.16	807,405.81	32.69984841	-103.46839481	
18,100.00	90.00	359.52	11,370.00	6,764.22	-774.72	619,521.16	807,404.97	32.70012326	-103.46839491	
18,200.00	90.00	359.52	11,370.00	6,864.22	-775.56	619,621.15	807,404.12	32.70039811	-103.46839500	
18,300.00	90.00	359.52	11,370.00	6,964.21	-776.41	619,721.15	807,403.28	32.70067295	-103.46839509	
18,400.00	90.00	359.52	11,370.00	7,064.21	-777.25	619,821.14	807,402.43	32.70094780	-103.46839519	
18,500.00	90.00	359.52	11,370.00	7,164.21	-778.10	619,921.14	807,401.59	32.70122265	-103.46839528	
18,600.00	90.00	359.52	11,370.00	7,264.20	-778.94	620,021.14	807,400.75	32.70149750	-103.46839537	
18,700.00	90.00	359.52	11,370.00	7,364.20	-779.79	620,121.13	807,399.90	32.70177234	-103.46839547	
18,800.00	90.00	359.52	11,370.00	7,464.20	-780.63	620,221.13	807,399.06	32.70204719	-103.46839556	
18,900.00	90.00	359.52	11,370.00	7,564.19	-781.47	620,321.13	807,398.21	32.70232204	-103.46839565	
19,000.00	90.00	359.52	11,370.00	7,664.19	-782.32	620,421.12	807,397.37	32.70259689	-103.46839575	
19,100.00	90.00	359.52	11,370.00	7,764.19	-783.16	620,521.12	807,396.52	32.70287173	-103.46839584	
19,200.00	90.00	359.52	11,370.00	7,864.18	-784.01	620,621.12	807,395.68	32.70314658	-103.46839593	
19,300.00	90.00	359.52	11,370.00	7,964.18	-784.85	620,721.11	807,394.84	32.70342143	-103.46839603	
19,400.00	90.00	359.52	11,370.00	8,064.18	-785.70	620,821.11	807,393.99	32.70369628	-103.46839612	
19,500.00	90.00	359.52	11,370.00	8,164.17	-786.54	620,921.11	807,393.15	32.70397112	-103.46839621	
19,600.00	90.00	359.52	11,370.00	8,264.17	-787.38	621,021.10	807,392.30	32.70424597	-103.46839630	
19,700.00	90.00	359.52	11,370.00	8,364.16	-788.23	621,121.10	807,391.46	32.70452082	-103.46839640	
19,800.00	90.00	359.52	11,370.00	8,464.16	-789.07	621,221.09	807,390.61	32.70479567	-103.46839649	
19,900.00	90.00	359.52	11,370.00	8,564.16	-789.92	621,321.09	807,389.77	32.70507051	-103.46839658	
20,000.00	90.00	359.52	11,370.00	8,664.15	-790.76	621,421.09	807,388.93	32.70534536	-103.46839668	
20,100.00	90.00	359.52	11,370.00	8,764.15	-791.61	621,521.08	807,388.08	32.70562021	-103.46839677	
20,200.00	90.00	359.52	11,370.00	8,864.15	-792.45	621,621.08	807,387.24	32.70589506	-103.46839686	
20,300.00	90.00	359.52	11,370.00	8,964.14	-793.30	621,721.08	807,386.39	32.70616990	-103.46839696	
20,400.00	90.00	359.52	11,370.00	9,064.14	-794.14	621,821.07	807,385.55	32.70644475	-103.46839705	
20,500.00	90.00	359.52	11,370.00	9,164.14	-794.98	621,921.07	807,384.70	32.70671960	-103.46839714	
20,600.00	90.00	359.52	11,370.00	9,264.13	-795.83	622,021.07	807,383.86	32.70699445	-103.46839723	
20,700.00	90.00	359.52	11,370.00	9,364.13	-796.67	622,121.06	807,383.02	32.70726929	-103.46839733	
20,800.00	90.00	359.52	11,370.00	9,464.13	-797.52	622,221.06	807,382.17	32.70754414	-103.46839742	
20,900.00	90.00	359.52	11,370.00	9,564.12	-798.36	622,321.06	807,381.33	32.70781899	-103.46839751	
21,000.00	90.00	359.52	11,370.00	9,664.12	-799.21	622,421.05	807,380.48	32.70809383	-103.46839761	
21,100.00	90.00	359.52	11,370.00	9,764.11	-800.05	622,521.05	807,379.64	32.70836868	-103.46839770	
21,200.00	90.00	359.52	11,370.00	9,864.11	-800.89	622,621.04	807,378.79	32.70864353	-103.46839779	
21,300.00	90.00	359.52	11,370.00	9,964.11	-801.74	622,721.04	807,377.95	32.70891838	-103.46839788	
21,400.00	90.00	359.52	11,370.00	10,064.10	-802.58	622,821.04	807,377.11	32.70919322	-103.46839798	
21,500.00	90.00	359.52	11,370.00	10,164.10	-803.43	622,921.03	807,376.26	32.70946807	-103.46839807	
21,600.00	90.00	359.52	11,370.00	10,264.10	-804.27	623,021.03	807,375.42	32.70974292	-103.46839816	
21,700.00	90.00	359.52	11,370.00	10,364.09	-805.12	623,121.03	807,374.57	32.71001776	-103.46839826	
21,800.00	90.00	359.52	11,370.00	10,464.09	-805.96	623,221.02	807,373.73	32.71029261	-103.46839835	





## Planning Report - Geographic

<b>Database:</b>	TZ USA 17.2	<b>Local Co-ordinate Reference:</b>	Site Alpha_Cable West
<b>Company:</b>	Franklin Mountain Energy LLC	<b>TVD Reference:</b>	3857+30 @ 3887.00usft
<b>Project:</b>	PV_Lea County, NM(N83-NME3001)	<b>MD Reference:</b>	3857+30 @ 3887.00usft
<b>Site:</b>	Alpha_Cable West	<b>North Reference:</b>	Grid
<b>Well:</b>	(WA05) Alpha State Com 801H	<b>Survey Calculation Method:</b>	Minimum Curvature
<b>Wellbore:</b>	801H		
<b>Design:</b>	APD-Rev01		

Planned Survey									
Measured Depth (usft)	Inclination (°)	Azimuth (°)	Vertical Depth (usft)	+N/-S (usft)	+E/-W (usft)	Map Northing (usft)	Map Easting (usft)	Latitude	Longitude
21,900.00	90.00	359.52	11,370.00	10,564.09	-806.80	623,321.02	807,372.88	32.71056746	-103.46839844
22,000.00	90.00	359.52	11,370.00	10,664.08	-807.65	623,421.02	807,372.04	32.71084231	-103.46839853
22,100.85	90.00	359.52	11,370.00	10,764.93	-808.50	623,521.86	807,371.19	32.71111949	-103.46839863
TD: 22100.85' MD/ 10771.38' VS/11370.00' TVD - 02-PBHL(APSC-801H)									

Design Targets									
Target Name	Dip Angle (°)	Dip Dir. (°)	TVD (usft)	+N/-S (usft)	+E/-W (usft)	Northing (usft)	Easting (usft)	Latitude	Longitude
01-T98(APSC-801H) - hit/miss target - Shape	0.00	0.00	11,370.00	417.83	-721.60	613,174.77	807,458.09	32.68267973	-103.46839045
- plan misses target center by 89.30usft at 11767.92usft MD (11370.00 TVD, 440.18 N, -635.14 E) - Point									
02-PBHL(APSC-801H) - plan hits target center - Point	0.00	0.00	11,370.00	10,764.93	-808.50	623,521.86	807,371.19	32.71111949	-103.46839863

Formations						
Measured Depth (usft)	Vertical Depth (usft)	Name	Lithology	Dip (°)	Dip Direction (°)	
30.00	30.00	Cenozoic Alluvium (surface)				
1,844.00	1,844.00	Rustler				
2,093.01	2,093.00	Salado				
3,261.25	3,257.00	Base Salt				
3,482.16	3,477.00	Yates				
3,949.09	3,942.00	Seven Rivers				
4,639.94	4,630.00	Queen				
6,193.35	6,177.00	Delaware Mtn Group				
7,798.98	7,776.00	Bone Spring Lime				
9,414.54	9,390.00	First Bone Spring Sand				
9,642.54	9,618.00	Second Bone Spring Carbonate				
9,922.54	9,898.00	Second Bone Spring Sand				
10,287.54	10,263.00	Third Bone Spring Carbonate				
10,386.54	10,362.00	Third Bone Spring Sand				
10,539.54	10,515.00	Wolfcamp				
10,988.91	10,962.00	Wolfcamp B				
11,721.58	11,370.00	HZ Target				

Plan Annotations				
Measured Depth (usft)	Vertical Depth (usft)	Local Coordinates		Comment
		+N/-S (usft)	+E/-W (usft)	
10,821.58	10,797.04	-156.70	-470.00	KOP: 10821.58' MD/ -152.70' VS/10797.04' TVD
11,721.58	11,370.00	395.42	-623.12	EOC: 11721.58' MD/ 400.68' VS/11370.00' TVD
11,744.19	11,370.00	417.23	-629.07	100FLL: 11744.19' MD/ 422.54' VS/11370.00' TVD
22,100.85	11,370.00	10,764.93	-808.50	TD: 22100.85' MD/ 10771.38' VS/11370.00' TVD