

Submit 3 Copies To Appropriate District Office
District I - (575) 393-6161
1625 N. French Dr., Hobbs, NM 88240
District II - (575) 748-1283
811 S. First St., Artesia, NM 88210
District III - (505) 334-6178
1000 Rio Brazos Rs., Aztec, NM 87410
District IV - (505) 476-3460
1220 S. St. Francis Dr., Santa Fe, NM 87505

State of New Mexico
Energy, Minerals and Natural Resources

Form C-103

Revised July 18, 2013

OIL CONSERVATION DIVISION
1220 South St. Francis Dr.
Santa Fe, NM 87505

WELL API NO. 30-039-23550
5. Indicate Type of Lease STATE <input checked="" type="checkbox"/> FEE <input type="checkbox"/>
6. State Oil & Gas Lease No. E80915
7. Lease Name or Unit Agreement Name CANYON LARGO UNIT NP
8. Well Number 182
9. OGRID Number 372171
10. Pool name or Wildcat GL - DEVILS FORK GALLUP ASSOC

SUNDRY NOTICES AND REPORTS ON WELLS (DO NOT USE THIS FORM FOR PROPOSALS TO DRILL OR TO DEEPEN OR PLUG BACK TO A DIFFERENT RESERVOIR. USE "APPLICATION FOR PERMIT" (FORM C-101) FOR SUCH PROPOSALS.)	
1. Type of Well: <input type="checkbox"/> Oil Well <input checked="" type="checkbox"/> Gas Well <input type="checkbox"/> Other	
2. Name of Operator Hilcorp Energy Company	
3. Address of Operator 382 Road 3100 Aztec, NM 87410	
4. Well Location Unit Letter P Footage 790' FSL & 790' FEL Section 02 Township 024N Range 007W RIO ARRIBA COUNTY	
11. Elevation (Show whether DR, RKB, RT, GR, etc.) 6648' GR	

12. CHECK APPROPRIATE BOX(ES) TO INDICATE NATURE OF NOTICE, REPORT OR OTHER DATA

NOTICE OF INTENTION TO:

PERFORM REMEDIAL WORK <input type="checkbox"/>	PLUG AND ABANDON <input type="checkbox"/>
TEMPORARILY ABANDON <input type="checkbox"/>	CHANGE PLANS <input type="checkbox"/>
PULL OR ALTER CASING <input type="checkbox"/>	MULTIPLE COMPL <input type="checkbox"/>
DOWNHOLE COMMINGLE <input type="checkbox"/>	
CLOSED-LOOP SYSTEM <input type="checkbox"/>	
OTHER: <input type="checkbox"/>	

SUBSEQUENT REPORT OF:

REMEDIAL WORK <input type="checkbox"/>	ALTERING CASING <input type="checkbox"/>
COMMENCE DRILLING OPNS. <input type="checkbox"/>	P AND A <input checked="" type="checkbox"/>
CASING/CEMENT JOB <input type="checkbox"/>	
OTHER: <input type="checkbox"/>	

13. Describe proposed or completed operations. (Clearly state all pertinent details, and give pertinent dates, including estimated date of starting any proposed work). SEE RULE 19.15.7.14 NMAC. For Multiple Completions: Attach wellbore diagram of proposed completion or recompletion.

Hilcorp Energy Company has plugged and abandoned the subject well on 6/10/2024 per the attached report.

Spud Date: **9/22/1984**

Rig Released Date:

I hereby certify that the information above is true and complete to the best of my knowledge and belief.

SIGNATURE Priscilla Shorty TITLE Operations/Regulatory Tech - Sr. DATE 6/11/2024
Type or print name Priscilla Shorty E-mail address: pshorty@hilcorp.com PHONE: 505.324.5188

APPROVED BY: _____ TITLE _____ DATE _____

Conditions of Approval (if any):

CANYON LARGO UNIT NP 182**30.039.23550****PLUG AND ABANDONMENT**

6/5/2024 – MIRU. CHECK PSI ON WELL SITP 0#, SICP 70#, SIICP N/A, BH 0#, BDW 5 MINS. SET ROD PUMP & LOAD TBG W/1.5 BBLS. PT 2.375" PROD TBG TO 850 PSI. (GOOD TEST). LD POLISH ROD. LD 223 JTS OF 3/4" RODS, 6 SINKER BARS, 1 GUIDE & INSERT PUMP ONTO TRAILER. ND WH, NU BOP, PT & FUNCTION TEST BOP & RU RIG FLOOR. PULL TBG HANGER @ 27K. TOO. MU 4.5" CICR. TALLEY & STRAP TBG OUT OF DERRICK. TIH. TAGGED @ 4,082'. PUMPED DOWN CSG BUT NOTHING. TOO W/4.5" CICR. SDFN.

6/6/2024 - CHECK PSI ON WELL SITP 0#, SICP 45#, SIICP N/A, BH 0#, BDW 2 MINS. MU 3.875" IMPRESSION BLOCK. TIH TO 4,082'. TAG W/IMPRESSION BLOCK & TOO. CHECKED BLOCK & HAD A LITTLE CHUNK MISSING ON ONE SIDE. ABOUT 1.5" WIDE BY 1.5" LONG. MU BIT & STRING MILL. TIH & TAG ON STD #63. BACK @ 4,082'. WORKED AREA & FINALLY BROKE THROUGH BUT STILL PULLING 4K OVER SW GOING THROUGH 4,082'. FINALLY BROKE FREE NO MORE ADDED SW. ROTATED TBG STRING ABOVE 4,082 & NO CHANGE. FINISH TIH TO 5,514'. (NO ISSUES) TOO. LD BIT & SCRAPER. MU 4.5" CICR & TIH TO 5,492'. SET CICR @ 5,492'. LW. PT TO 560 PSI & FAILED. GETTING INJ RATE @ 1.3 BBL/MIN W/120 PSI. TOO. RU WIRELINE, RUN CBL FROM 5,492' TO SURFACE. POOH R/D WIRELINE. SDFN.

6/7/2024 – HEC ENGINEER SENT THE CBL TO MONICA KUEHLING, NMOCD. BASED ON THE RESULTS AND FAILED PT, APPROVAL WAS REQUESTED TO PARTIALLY ABANDON THE WELLBORE AND ATTEMPT TO TA AT A SHALLOWER DEPTH. IN ADDITION TO THE PARTIAL ABANDONMENT, MONICA RECOMMENDED THAT A CONTINGENT P&A PROCEDURE BE ADDED TO THE NEW NOI. NMOCD APPROVED THE NEW NOI.

6/8/2024 - CHECK PSI ON WELL SITP 0#, SICP 0#, SIICP N/A, BH 0#, BDW 0 MINS. MU SETTING TOOL. TIH TO 5,492'. LW. STINGER INTO CICR. COULD NOT GET INJ RATE UNDER CICR. PRESSURE UP TO 1000 PSI. HEC ENGINEER EMAILED MONICA KUEHLING, NMOCD, ON NOT BEING ABLE TO EST INJ RATE. NMOCD APPROVED TO JUST PUMP CMT ON TOP OF CICR. PUMP CEMENT PLUG #1 (GAL PERFS, GAL, DV TOOL & MCS TOPS) 77 SXS 15.7 BBLS, 1.15 Y, 15.8# & 5 GAL/SX. BOC @ 5,492'. TOO. LD SETTING TOOL. WOC. TIH & TAG PLUG #1 @ 4,604'. LW. PT TO 560 PSI & FAILED. GETTING INJ RATE @ 1.1 BBLS/MIN W/95 PSI. TOO. LD TAG SUB. MU 4.5" CICR & RIH TO 3,820'. SET CICR @ 3,820'. PUMP CEMENT PLUG #2 (MV & CHC TOPS) 113 SXS 22.9 BBLS, 1.15 Y, 15.8# & 5 GAL/SX. BOC @ 3,820'. LD 44 JTS. R/O 30 BBLS & TOO. WOC #2 PLUG OVERNIGHT. SDFN. NMOCD REP ANTHONY BUNNY ON LOCATION.

6/9/2024 - CHECK PSI ON WELL SITP 0#, SICP 0#, SIICP N/A, BH 0#, BDW 0 MINS. TOO. LD SETTING TOOL. MU TAG SUB. TIH 38 STDS & TAG #2 PLUG @ 2,361'. LW. PT TO 560 PSI & FAILED. STILL GETTING INJ RATE @ 1.1 BBLS/MIN W/85 PSI. NMOCD APPROVE TO PROCEED W/P&A OPERATIONS. PUMP CEMENT PLUG #3 (PC, FRD, KRD & OJO TOPS) 69 SXS 13.9 BBLS, 1.15 Y, 15.8# & 5 GAL/SX. BOC @ 2,254'. LD 27 JTS. TOO. WOC. TIH & TAG #3 PLUG @ 1,436'. LD 24 JTS. RU WIRELINE, RIH & PERF SQUEEZES HOLES @ 730'. POOH & RD WIRELINE. LW. INJ RATE @ 1.5 BBLS/MIN W/250 PSI. BH OPEN, GETTING GOOD CIRC TO SURFACE @ 2 BBLS/MIN W/150 PSI. MU 4.5" CICR. TIH & SET CICR @ 680'. INJ RATE UNDER CICR @ 1.3 BBLS/MIN W/300 PSI. PUMP CEMENT PLUG #4 (NAC TOP) 52 SXS 10.6 BBLS, 1.15 Y, 15.8# & 5 GAL/SX. BOC @ 730'. LD 6 JTS. R/O 10 BBLS. TOO. WOC #4 PLUG OVERNIGHT. SDFN. NMOCD REP ANTHONY BUNNY ON LOCATION.

6/10/2024 - CHECK PSI ON WELL SITP 0#, SICP 0#, SIICP N/A, BH 0#, BDW 0 MINS. MU TAG SUB. TIH & TAG PLUG #4 @ 580'. TOO. RU WIRELINE, RIH & PERF SQUEEZES HOLES @ 220'. POOH & RD WIRELINE. LW W/2 BBLS & PUMP 10 BBLS. GETTING GOOD CIRC DOWN CSG & OUT BH @ 1.9 BBLS/MIN W/89 PSI. TIH 4 STDS TO 262'. PUMP CEMENT PLUG #5 (SURFACE) 101 SXS 20.6 BBLS, 1.15 Y, 15.8# & 5 GAL/SX. TOC @ 0', BOC @ 262'. LD 8 JTS. TOTAL OF 21 SXS INSIDE 4.5" CSG & 80 SXS INSIDE 4.5" X 8-5/8" ANNULUS. WOC #5 PLUG. RD RIG FLOOR. ND BOP & PREP TO CUT OFF WH. RD RIG AND EQUIPMENT &

CANYON LARGO UNIT NP 182

30.039.23550

PLUG AND ABANDONMENT

MOVE OFF LOCATION. CEMENT CREW STAYED ON LOCATION TO CUT-OFF & TOP-OFF CSG & CELLAR. CUT OFF WH. (TOC IN 4.5" CSG 33' & 8-5/8" SURFACE CSG 6') WELD ON P&A MARKER. FILL CSG AND CELLAR WITH 26 SXS OF CEMENT. **NMOCD REP ANTHONY BUNNY ON LOCATION.**

WELL WAS PLUGGED AND ABANDONED ON 6/10/2024.

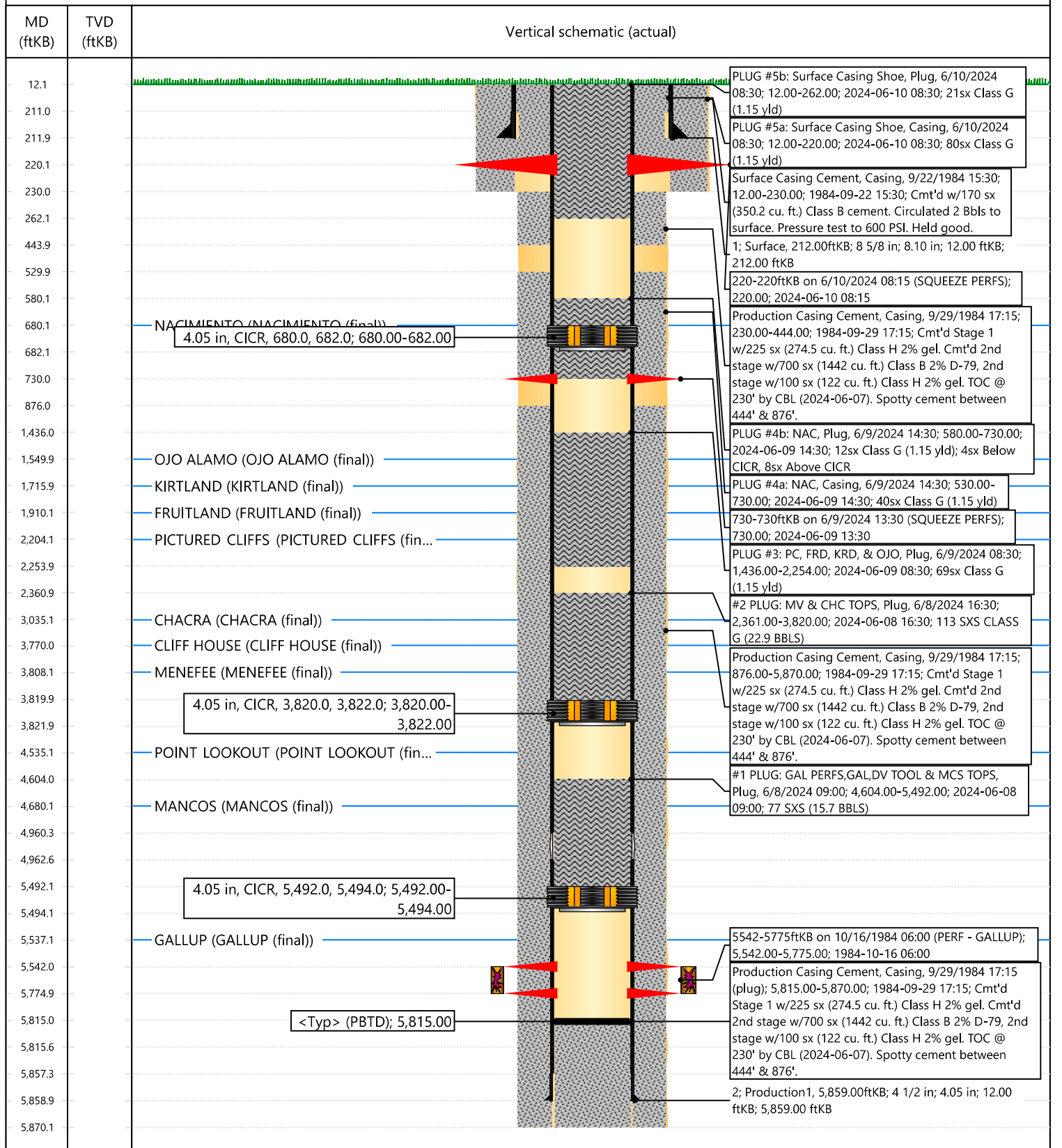


Current Schematic - Version 3

Well Name: CANYON LARGO UNIT NP #182

API / UWI 3003923550	Surface Legal Location P-2-24N-7W	Field Name	Route 1409	State/Province NEW MEXICO	Well Configuration Type Vertical
Ground Elevation (ft) 6,648.00	Original KB/RT Elevation (ft) 6,660.00	Tubing Hanger Elevation (ft)	RKB to GL (ft) 12.00	KB-Casing Flange Distance (ft)	KB-Tubing Hanger Distance (ft)

Original Hole [Vertical]



Priscilla Shorty

From: Kuehling, Monica, EMNRD <monica.kuehling@emnrd.nm.gov>
Sent: Monday, June 10, 2024 7:48 AM
To: John LaMond
Cc: Farmington Regulatory Techs; Brice Clyde - (C); Clay Padgett; Lee Murphy; Rustin Mikeska; Priscilla Shorty
Subject: RE: [EXTERNAL] TA Revision Request for Hilcorp's CANYON LARGO UNIT NP 182 (API # 3003923550)

CAUTION: External sender. DO NOT open links or attachments from UNKNOWN senders.

NMOCD Verbal approval was given on Saturday June 8, 2024

Thank you

Monica Kuehling
Compliance Officer Supervisor
Deputy Oil and Gas Inspector
New Mexico Oil Conservation Division
North District
Office Phone: 505-334-6178 ext. 123
Cell Phone: 505-320-0243
Email - monica.kuehling@emnrd.nm.gov

From: John LaMond <jlamond@hilcorp.com>
Sent: Saturday, June 8, 2024 9:03 AM
To: Kuehling, Monica, EMNRD <monica.kuehling@emnrd.nm.gov>
Cc: Farmington Regulatory Techs <FarmingtonRegulatoryTechs@hilcorp.com>; Brice Clyde - (C) <Brice.Clyde@hilcorp.com>; Clay Padgett <cpadgett@hilcorp.com>; Lee Murphy <lmurphy@hilcorp.com>; Rustin Mikeska <rmikeska@hilcorp.com>; John LaMond <jlamond@hilcorp.com>; Priscilla Shorty <pshorty@hilcorp.com>
Subject: RE: [EXTERNAL] TA Revision Request for Hilcorp's CANYON LARGO UNIT NP 182 (API # 3003923550)

Good morning Monica,

Per our conversation this morning, we TIH, stung back into the CICR @ 5,492', and could not establish in injection rate.

As a result, Hilcorp received verbal approval from the NMOCD to adjust PLUG #1: We received verbal approval to forego pumping the 8sx cement below the CICR @ 5,492' and proceed with pumping the 71sx of cement on top of the CICR.

Please let me know if you have any questions.

Thanks,

John LaMond

Operations Engineer – Technical Services
Hilcorp Energy Company
1111 Travis
Houston, TX 77002
346-237-2210 (Office)
832-754-9692 (Cell)
ilamond@hilcorp.com

From: Priscilla Shorty <pshorty@hilcorp.com>
Sent: Friday, June 7, 2024 3:25 PM
To: John LaMond <ilamond@hilcorp.com>; Kuehling, Monica, EMNRD <monica.kuehling@emnrd.nm.gov>
Cc: Farmington Regulatory Techs <FarmingtonRegulatoryTechs@hilcorp.com>; Brice Clyde - (C) <Brice.Clyde@hilcorp.com>; Clay Padgett <cpadgett@hilcorp.com>; Lee Murphy <lmurphy@hilcorp.com>; Rustin Mikeska <rmikeska@hilcorp.com>
Subject: RE: [EXTERNAL] TA Revision Request for Hilcorp's CANYON LARGO UNIT NP 182 (API # 3003923550)

Monica,

The TA NOI Sundry has been updated per our conversation, new **ACTION ID 352165**. Thank you.

Priscilla Shorty
Operations Regulatory Technician
Hilcorp Energy Company
505-324-5188
pshorty@hilcorp.com

From: Priscilla Shorty
Sent: Friday, June 7, 2024 2:04 PM
To: John LaMond <ilamond@hilcorp.com>; Kuehling, Monica, EMNRD <monica.kuehling@emnrd.nm.gov>
Cc: Farmington Regulatory Techs <FarmingtonRegulatoryTechs@hilcorp.com>; Brice Clyde - (C) <Brice.Clyde@hilcorp.com>; Clay Padgett <cpadgett@hilcorp.com>; Lee Murphy <lmurphy@hilcorp.com>; Rustin Mikeska <rmikeska@hilcorp.com>
Subject: RE: [EXTERNAL] TA Revision Request for Hilcorp's CANYON LARGO UNIT NP 182 (API # 3003923550)

Hi Monica,

The updated TA procedure has been submitted on OCD Permitting, **ACTION ID 352148**. Please reject the previous submitted NOI, ACTION ID 352053, as it did not have the P&A contingent plan.

Thank you,

Priscilla Shorty
Operations Regulatory Technician
Hilcorp Energy Company
505-324-5188
pshorty@hilcorp.com

From: John LaMond <ilamond@hilcorp.com>
Sent: Friday, June 7, 2024 1:54 PM
To: Kuehling, Monica, EMNRD <monica.kuehling@emnrd.nm.gov>
Cc: Farmington Regulatory Techs <FarmingtonRegulatoryTechs@hilcorp.com>; Brice Clyde - (C)

<Brice.Clyde@hilcorp.com>; Clay Padgett <cpadgett@hilcorp.com>; Lee Murphy <lmurphy@hilcorp.com>; Rustin Mikeska <rmikeska@hilcorp.com>; John LaMond <jamond@hilcorp.com>

Subject: RE: [EXTERNAL] TA Revision Request for Hilcorp's CANYON LARGO UNIT NP 182 (API # 3003923550)

Good afternoon Monica,

Attached is the updated TA procedure to reflect the final P&A procedure contingent upon whether the MIT against PLUG #2 passes or fails. It also reflects the NMOCD FRD formation top pick. Both a TA & P&A wellbore schematic is attached. This will be submitted to the system today.



HILCORP ENERGY COMPANY
CANYON LARGO UNIT NP 182
TA NOI

API #: 3003923550

JOB PROCEDURES

1. Contact NMOCD and BLM (where applicable) 24 hours prior to MIRU.
2. Hold pre-job safety meeting. Verify cathodic is off. Comply with all NMOCD, BLM, and HEC safety and environmental regulations.
3. MIRU service rig and associated equipment. NU and test BOP.
4. *Note all subsequent plugs are based on **CBL run 2024-06-06**.
5. TIH w/ work string and sting into **4-1/2" CICR set @ 5,492'**. Establish injection.
6. **PLUG #1: 79sx of Class G Cement (15.8 PPG, 1.15 yield); GAL Perfs @ 5,542' | GAL Top @ 5,537' | DV Tool #1 Top @ 4,960' | MCS Top @ 4,680'**: Pump 8sx of cement beneath the 4-1/2" CICR (est. **TOC @ +/- 5,492'** & est. **BOC @ +/- 5,587'**). Pump a 71 sack balanced cement plug on top of the CICR. (est. **TOC @ +/- 4,580'** & est. **BOC @ +/- 5,492'**). Wait on Cement for 4 hours, tag TOC w/ work string. *Note cement plug lengths & volumes account for excess.
7. Load the well as needed. Pressure test the casing above the plug to **560 psig**.
8. POOH w/ work string.
9. Set a **4-1/2" CICR or CIBP at +/- 3,820'**.
10. Load the well as needed. Pressure test the casing above the plug to **560 psig**.
11. **PLUG #2: 113sx of Class G Cement (15.8 PPG, 1.15 yield); MV Top @ 3,770' | CHC Top @ 3,035'**: Pump a 113 sack balanced cement plug inside the 4-1/2" casing (est. **TOC @ +/- 2,375'** & est. **BOC @ +/- 3,820'**). Wait on Cement for 4 hours, tag TOC w/ work string. *Note cement plug lengths & volumes account for excess.
12. Load the well as needed. Perform an an charted and witnessed MIT by pressure test the casing above the plug to **560 psig**.
13. **If the MIT passes, TA completed. POOH w/ work string. RDMO service rig.**
14. **If the MIT fails, proceed with final P&A operations as follows:**
15. POOH w/ work string to **+/- 2,254'**.
16. **PLUG #3: 63sx of Class G Cement (15.8 PPG, 1.15 yield); PC Top @ 2,204' | FRD Top @ 1,910' | KRD Top @ 1,716' | OJO Top @ 1,550'**: Pump a 63 sack balanced cement plug inside the 4-1/2" casing (est. **TOC @ +/- 1,450'** & est. **BOC @ +/- 2,254'**). Wait on Cement for 4 hours, tag TOC w/ work string. *Note cement plug lengths & volumes account for excess.
17. POOH w/ work string. TIH & perforate squeeze holes @ **+/- 730'**. RIH w/ **4-1/2" CICR** and set CICR @ **+/- 680'**. TIH w/ work string & sting into CICR. Establish injection.
18. **PLUG #4: 52sx of Class G Cement (15.8 PPG, 1.15 yield); NAC Top @ 680'**: Pump 40sx of cement in the 4-1/2" casing X 7-7/8" open hole annulus (est. **TOC @ +/- 530'** & est. **BOC @ +/- 730'**). Pump an additional 4sx of cement beneath the 4-1/2" CICR (est. **TOC @ +/- 680'** & est. **BOC @ +/- 730'**). Sting out of retainer, pump an 8 sack balanced cement plug on top of the CICR. (est. **TOC @ +/- 580'** & est. **BOC @ +/- 680'**). WOC for 4 hrs, tag TOC w/ work string. *Note cement plug lengths and volumes account for excess.
19. TOOH w/ work string. TIH and perforate squeeze holes @ **+/- 220'**. TIH with tubing/work string. ***Note we are deciding to perforate @ 220' because there is no cement bond at that depth. There is cement bond 50' below the surface casing shoe @ 262'.**
20. **PLUG #5: 69sx of Class G Cement (15.8 PPG, 1.15 yield); Surf. Casing Shoe @ 212'**: Pump 2sx of cement in the 4-1/2" casing X 7-7/8" open hole annulus (est. **TOC @ +/- 212'** & est. **BOC @ +/- 220'**). Continue pumping 46sx of cement in the 4-1/2" casing X 8-5/8" casing annulus (est. **TOC @ +/- 0'** & est. **BOC @ +/- 212'**). Pump a 21 sack balanced cement plug inside the 4-1/2" casing (est. **TOC @ +/- 0'** & est. **BOC @ +/- 262'**). WOC for 4 hrs, tag TOC w/ work string.
21. ND BOP, cut off casing below casing flange. Top off cement in surface casing annulus, if needed. Install a P&A marker with cement to comply with regulations. Ri down, move off location, cut off anchors, and restore location.

Please let me know if you have any questions.

Thanks,

John LaMond

Operations Engineer – Technical Services
Hilcorp Energy Company
1111 Travis
Houston, TX 77002
346-237-2210 (Office)
832-754-9692 (Cell)
jlamond@hilcorp.com

From: Kuehling, Monica, EMNRD <monica.kuehling@emnrd.nm.gov>
Sent: Friday, June 7, 2024 12:57 PM
To: John LaMond <jlamond@hilcorp.com>
Cc: Farmington Regulatory Techs <FarmingtonRegulatoryTechs@hilcorp.com>; Brice Clyde - (C) <Brice.Clyde@hilcorp.com>; Clay Padgett <cpadgett@hilcorp.com>; Lee Murphy <lmurphy@hilcorp.com>; Rustin Mikeska <rmikeska@hilcorp.com>
Subject: RE: [EXTERNAL] TA Revision Request for Hilcorp's CANYON LARGO UNIT NP 182 (API # 3003923550)

CAUTION: External sender. DO NOT open links or attachments from UNKNOWN senders.

John

In addition to previous email – If in the event you decide to plug the well – correct fruitland top – NMOCD call is 1910 – all other tops are good.

Since you are working the weekend. Anthony will be on site – I will be on the phone –

It might be better to do the amended with the partial plug plus add the rest of well to plug in case you decide to plug the whole well this weekend. This will keep you from having to do another amended.

Thank you

Monica Kuehling
Compliance Officer Supervisor
Deputy Oil and Gas Inspector
New Mexico Oil Conservation Division
North District
Office Phone: 505-334-6178 ext. 123
Cell Phone: 505-320-0243
Email - monica.kuehling@emnrd.nm.gov

From: Kuehling, Monica, EMNRD
Sent: Friday, June 7, 2024 10:22 AM
To: John LaMond <jlamond@hilcorp.com>
Cc: Farmington Regulatory Techs <FarmingtonRegulatoryTechs@hilcorp.com>; Brice Clyde - (C)

<Brice.Clyde@hilcorp.com>; Clay Padgett <cpadgett@hilcorp.com>; Lee Murphy <lmurphy@hilcorp.com>; Rustin Mikeska <rmikeska@hilcorp.com>

Subject: RE: [EXTERNAL] TA Revision Request for Hilcorp's CANYON LARGO UNIT NP 182 (API # 3003923550)

John

Please submit through system the below amended TA which is going into partial plugging

Thank you

Monica

From: John LaMond <jlamond@hilcorp.com>

Sent: Friday, June 7, 2024 10:18 AM

To: Kuehling, Monica, EMNRD <monica.kuehling@emnrn.dnrm.gov>

Cc: Farmington Regulatory Techs <FarmingtonRegulatoryTechs@hilcorp.com>; Brice Clyde - (C) <Brice.Clyde@hilcorp.com>; Clay Padgett <cpadgett@hilcorp.com>; Lee Murphy <lmurphy@hilcorp.com>; Rustin Mikeska <rmikeska@hilcorp.com>; John LaMond <jlamond@hilcorp.com>

Subject: RE: [EXTERNAL] TA Revision Request for Hilcorp's CANYON LARGO UNIT NP 182 (API # 3003923550)

Good morning Monica,

Attached is the CBL that was run yesterday (6/6/2024). The CBL shows TOC @ ~230', with spotty cement between 444' & 876'. Additionally, a pressure test was performed to 560 psi which failed.

Based on the results of the CBL and the failed pressure test, Hilcorp requests to move forward partially abandoning the wellbore, and attempting to TA at a shallower depth (~2,375').

I have attached an updated TA procedure as well as an updated proposed TA wellbore schematic. The rig is shut down today (6/7/2024), and Hilcorp plans to proceed with operations Saturday morning (6/8/2024).



HILCORP ENERGY COMPANY
CANYON LARGO UNIT NP 182
TA NOI

API #: 3003923550

JOB PROCEDURES

1. Contact NMOCD and BLM (where applicable) 24 hours prior to MIRU.
2. Hold pre-job safety meeting. Verify cathodic is off. Comply with all NMOCD, BLM, and HEC safety and environmental regulations.
3. MIRU service rig and associated equipment. NU and test BOP.
4. *Note all subsequent plugs are based on **CBL run 2024-06-06**.
5. TIH w/ work string and sting into **4-1/2"** CICR set @ **5,492'**. Establish injection.
6. **PLUG #1: 79sx of Class G Cement (15.8 PPG, 1.15 yield); GAL Perfs @ 5,542' | GAL Top @ 5,537' | DV Tool #1 Top @ 4,960' | MCS Top @ 4,6**
 Pump 8sx of cement beneath the 4-1/2" CICR (est. **TOC @ +/- 5,492'** & est. **BOC @ +/- 5,587'**). Pump a 71 sack balanced cement plug on top of the (**TOC @ +/- 4,580'** & est. **BOC @ +/- 5,492'**). Wait on Cement for 4 hours, tag TOC w/ work string. *Note cement plug lengths & volumes account for e)
7. Load the well as needed. Pressure test the casing above the plug to **560 psig**.
8. POOH w/ work string.
9. Set a **4-1/2"** CICR or CIBP at **+/- 3,820'**.
10. Load the well as needed. Pressure test the casing above the plug to **560 psig**.
11. **PLUG #2: 113sx of Class G Cement (15.8 PPG, 1.15 yield); MV Top @ 3,770' | CHC Top @ 3,035'**
 Pump a 113 sack balanced cement plug inside the 4-1/2" casing (est. **TOC @ +/- 2,375'** & est. **BOC @ +/- 3,820'**). Wait on Cement for 4 hours, tag TC string. *Note cement plug lengths & volumes account for excess.
12. Load the well as needed. Perform an charted and witnessed MIT by pressure test the casing above the plug to **560 psig**.
13. POOH w/ work string.
14. RDMO service rig.

Please let me know if you have any questions or concerns.

Thanks,

John LaMond

Operations Engineer – Technical Services

Hilcorp Energy Company

1111 Travis

Houston, TX 77002

346-237-2210 (Office)

832-754-9692 (Cell)

ilamond@hilcorp.com

From: Kuehling, Monica, EMNRD <monica.kuehling@emnrd.nm.gov>

Sent: Thursday, May 9, 2024 5:10 PM

To: John LaMond <ilamond@hilcorp.com>

Cc: Farmington Regulatory Techs <FarmingtonRegulatoryTechs@hilcorp.com>; Brice Clyde - (C) <Brice.Clyde@hilcorp.com>; Clay Padgett <cpadgett@hilcorp.com>; Lee Murphy <lmurphy@hilcorp.com>; Rustin Mikeska <rmikeska@hilcorp.com>
Subject: RE: [EXTERNAL] TA Revision Request for Hilcorp's CANYON LARGO UNIT NP 182 (API # 3003923550)

CAUTION: External sender. DO NOT open links or attachments from UNKNOWN senders.

This is changing from a CIBP to a cement retainer.

Approval is given

Thank you

Monica Kuehling
Compliance Officer Supervisor
Deputy Oil and Gas Inspector
New Mexico Oil Conservation Division
North District
Office Phone: 505-334-6178 ext. 123
Cell Phone: 505-320-0243
Email - monica.kuehling@emnrd.nm.gov

From: John LaMond <jlamond@hilcorp.com>
Sent: Wednesday, May 8, 2024 12:00 PM
To: Kuehling, Monica, EMNRD <monica.kuehling@emnrd.nm.gov>
Cc: Farmington Regulatory Techs <FarmingtonRegulatoryTechs@hilcorp.com>; Brice Clyde - (C) <Brice.Clyde@hilcorp.com>; Clay Padgett <cpadgett@hilcorp.com>; John LaMond <jlamond@hilcorp.com>; Lee Murphy <lmurphy@hilcorp.com>; Rustin Mikeska <rmikeska@hilcorp.com>
Subject: [EXTERNAL] TA Revision Request for Hilcorp's CANYON LARGO UNIT NP 182 (API # 3003923550)

CAUTION: This email originated outside of our organization. Exercise caution prior to clicking on links or opening attachments.

Good afternoon Monica,

Hilcorp is planning to work on the CANYON LARGO UNIT NP 182 (API # 3003923550) TA in the near future.

I have attached the approved TA NOI, as well as an updated procedure requesting a slight change to the approved NOI.

Hilcorp requests the following adjustment to the approved procedure:

- Hilcorp requests to set a 4-1/2" CICR instead of a CIBP @ 5,492' to isolate the GAL perfs.



HILCORP ENERGY COMPANY
CANYON LARGO UNIT NP 182
TA NOI

API #: 3003923550

JOB PROCEDURES

1. Contact NMOCD and BLM (where applicable) 24 hours prior to MIRU.
2. Hold pre-job safety meeting. Verify cathodic is off. Comply with all NMOCD, BLM, and HEC safety and environmental regulations.
3. MIRU service rig and associated equipment; TOO H w/ pump & rods.
4. NU and test BOP.
5. TOO H w/ 2-3/8" tubing.
6. Set a 4-1/2" CICR at +/- 5,492' to isolate the **GAL Perfs.**
7. Load the well as needed. Perform an charted and witnessed MIT by pressure test the casing above the plug to **560 psig.**
8. RU Wireline. Run CBL. Record Top of Cement.
9. RDMO service rig.

Does the NMOCD approve of the revised procedure?

Thanks,

John LaMond

Operations Engineer – Technical Services

Hilcorp Energy Company

1111 Travis

Houston, TX 77002

346-237-2210 (Office)

832-754-9692 (Cell)

ilamond@hilcorp.com

The information contained in this email message is confidential and may be legally privileged and is intended only for the use of the individual or entity named above. If you are not an intended recipient or if you have received this message in error, you are hereby notified that any dissemination, distribution, or copy of this email is strictly prohibited. If you have received this email in error, please immediately notify us by return email or telephone if the sender's phone number is listed above, then promptly and permanently delete this message.

While all reasonable care has been taken to avoid the transmission of viruses, it is the responsibility of the recipient to ensure that the onward transmission, opening, or use of this message and any attachments will not adversely affect its systems or data. No responsibility is accepted by the company in this regard and the recipient should carry out such virus and other checks as it considers appropriate.

The information contained in this email message is confidential and may be legally privileged and is intended only for the use of the individual or entity named above. If you are not an intended recipient or if you have received this message in error, you are hereby notified that any dissemination, distribution, or copy of this email is strictly prohibited. If you have received this email in error, please immediately notify us by return email or telephone if the sender's phone number is listed above, then promptly and permanently delete this message.

While all reasonable care has been taken to avoid the transmission of viruses, it is the responsibility of the recipient to ensure that the onward transmission, opening, or use of this message and any attachments will not adversely affect its systems or data. No responsibility is accepted by the company in this regard and the recipient should carry out such virus and other checks as it considers appropriate.

District I
1625 N. French Dr., Hobbs, NM 88240
Phone:(575) 393-6161 Fax:(575) 393-0720
District II
811 S. First St., Artesia, NM 88210
Phone:(575) 748-1283 Fax:(575) 748-9720
District III
1000 Rio Brazos Rd., Aztec, NM 87410
Phone:(505) 334-6178 Fax:(505) 334-6170
District IV
1220 S. St Francis Dr., Santa Fe, NM 87505
Phone:(505) 476-3470 Fax:(505) 476-3462

State of New Mexico
Energy, Minerals and Natural Resources
Oil Conservation Division
1220 S. St Francis Dr.
Santa Fe, NM 87505

CONDITIONS

Action 352839

CONDITIONS

Operator: HILCORP ENERGY COMPANY 1111 Travis Street Houston, TX 77002	OGRID: 372171
	Action Number: 352839
	Action Type: [C-103] Sub. Plugging (C-103P)

CONDITIONS

Created By	Condition	Condition Date
mkuehling	well plugged 6/10/24	7/5/2024