

Well Name: STATE SENATE	Well Location: T30N / R16W / SEC 1 / NESW / 36.841125 / -108.478394	County or Parish/State: SAN JUAN / NM
Well Number: 2	Type of Well: OIL WELL	Allottee or Tribe Name: EASTERN NAVAJO
Lease Number: N00C14205341	Unit or CA Name:	Unit or CA Number:
US Well Number: 300450988900S1	Operator: SITTA R E	

Subsequent Report

Sundry ID: 2799589

Type of Submission: Subsequent Report	Type of Action: Plug and Abandonment
Date Sundry Submitted: 07/09/2024	Time Sundry Submitted: 01:56
Date Operation Actually Began: 06/22/2024	

**Actual Procedure:** Work completed on June 24, 2024. See attached detail report, including after work wellbore schematic and pictures of the marker. Aztec Well Servicing Co. completed the work as the contractor for New Mexico Oil Conservation Division. The Bureau of Land Management Farmington Field Office and the Federal Indian Minerals Office requested the work to be completed.

SR Attachments

Actual Procedure

State\_Senate\_2\_Final\_Job\_Report\_20240709135425.pdf

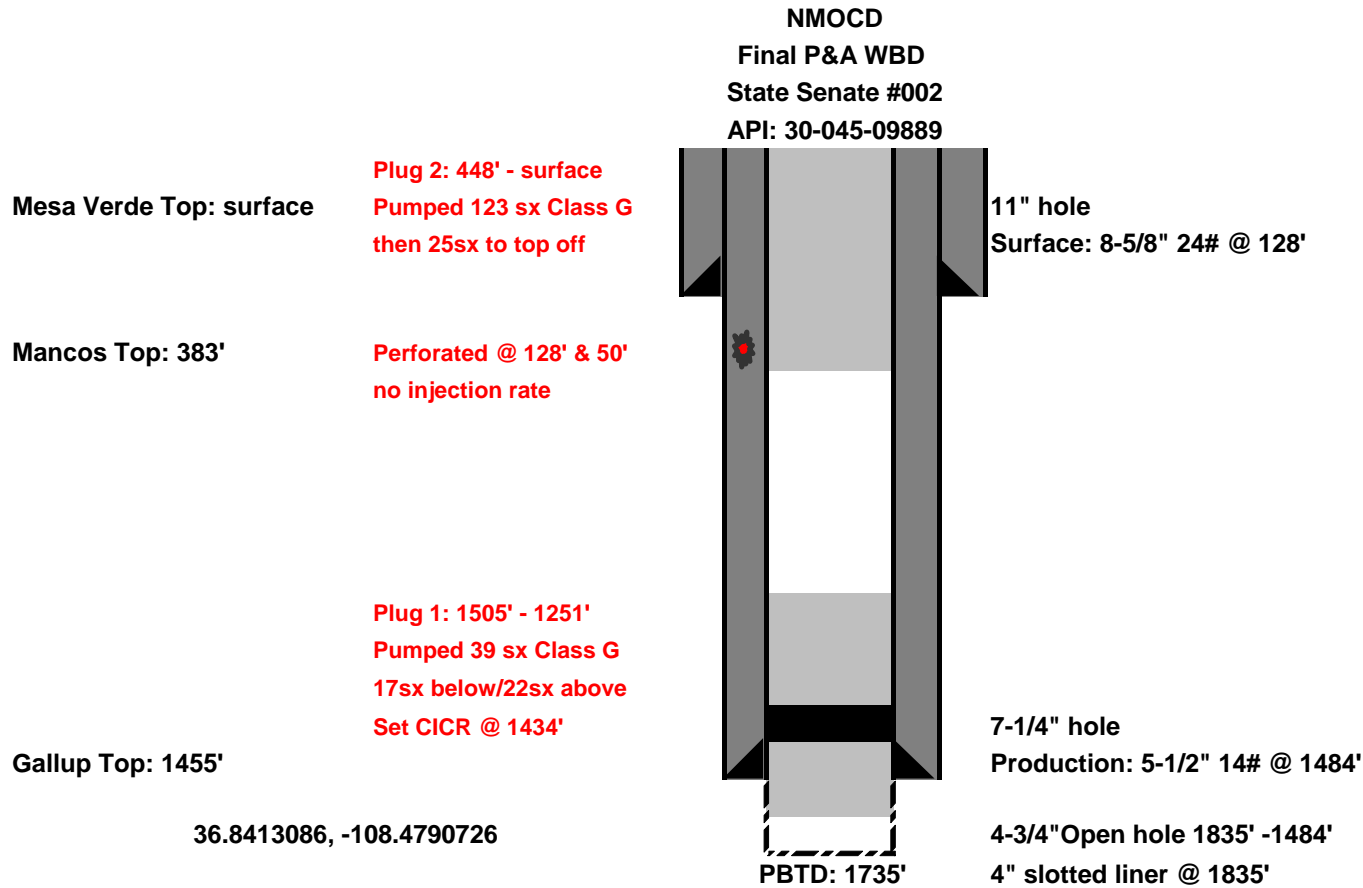
BLM Point of Contact

BLM POC Name: KENNETH G RENNICK	BLM POC Title: Petroleum Engineer
BLM POC Phone: 5055647742	BLM POC Email Address: krennick@blm.gov
Disposition: Accepted	Disposition Date: 07/09/2024
Signature: Kenneth Rennick	

[illegible]

CUSTOMER:	NEW MEXICO OCD							DATE:	June 23, 2024																												
LEASE & WELL NAME:	STATE SENATE #2								LOCATION:	Sec.01,T30N,R16W			SERVICE SUP:	DEAN MESTAS																							
SERVICE CONTRACTOR:	880/CT2									OPERATOR:	AZTEC WELL SERVICE			COUNTY:	SAN JUAN		STATE:	NEW MEXICO																			
MATERIALS FURNISHED:					TYPE OF PLUGS:				LIST CSG. HARDWARE:				SQUEEZE MANIFOLD:		TOP OF EACH FLUID:		PHYSICAL SLURRY PROPERTIES:																				
				TOP										SLURRY WEIGHT: Lb/gal		SLURRY YIELD: Cuft/sk		WATER REQ.: Gals/sk		PUMP TIME: hr:mm	SLURRY: bbbls	MIX WATER: bbbls															
				BOTTOM																																	
PRE-FLUSH - FRESH WATER																																					
Plug 1: Pumped 8.0bbbl cement slurry ((39sx; 15.8ppg, 1.15cuft/ft, 5.0gals/sk)) 17sx below ret., 22sx above ret.																			1250'		15.80		1.15		5.00				8.0		4.0						
Plug 2: Pumped 21.5bbbl cement slurry ((105sx; 15.8ppg, 1.15cuft/ft, 5.0gals/sk))																			Surface		15.80		1.15		5.00				21.5		12.5						
Top off: Pumped 3.7bbbl cement slurry ((18sx; 15.8ppg, 1.15cuft/ft, 5.0gals/sk)) to top off after laying down tubing																			Surface		15.80		1.15		5.00				3.7		2.1						
AVAILABLE MIX WATER: 400.0 BBLs AVAILABLE DISPLACEMENT WATER: 380.0 BBLs TOTAL MIX WATER: 18.6																																					
HOLE				TBG.-CSG.-D.P.						TBG.-CSG.-D.P.						COLLAR DEPTHS																					
SIZE % EXCESS DEPTH				SIZE WEIGHT TYPE DEPTH				SIZE WEIGHT TYPE DEPTH								SHOE FLOAT STAGE																					
12 100% 128'				9 5/8 40.00 K-55 128'				2 3/8 4.70 J-55 1434'								-				-	-																
LAST CASING				PKR-CMT RET-BR PL-LINER						PERF DEPTHS								TOP CONNECTION				WELLBORE FLUID															
SIZE WEIGHT TYPE DEPTH				BRAND & TYPE DEPTH						TOP BOTTOM								SIZE THREAD				TYPE WEIGHT															
5 1/2 14.00 K-55 1484'				SOT 1434' 1484' 1835'														2 3/8 8 ROUND				PRODUCED WATER 8.40															
CALCULATED DISPLACEMENT VOLUME: BBL				CAL. PSI		CAL. MAX PSI		OP. MAX		MAX TBG. PSI		MAX CASING PSI								DISPLACEMENT FLUID				WATER													
TUBING CASING CASING TOTAL				BUMP PLUG		TO REVERSE		SQ. PSI		RATED	PSI		RATED	OPER						TYPE WEIGHT		SOURCE															
																				FRESH WATER 8.33		CITY WATER															
EXPLANATION: TROUBLE SETTING TOOL, RUNNING CASING, ETC., PRIOR TO CEMENTING:																																					
PUMP DETAILS:																			DAILY SUMMARY:																		
TIME HR. MIN:		PRESSURE - PSI PIPE ANNULUS		RATE BPM:	BBL FLUID PUMPED:	FLUID TYPE:	SAFETY MEETING: CREW [X] CO. REP. [X]																														
							TEST LINES: PSI																														
							CIRCULATED THE WELL: RIG PUMP [ ] CMT PUMP [X]																														
5:30 - - - - -							Travel to location																														
7:00 - - - - -							PJSM, Service & Pre start equipment																														
7:15 0 0/0 - - -							Check PSI on Well: Tbg = 0psi; Csg = 0psi; BH = 0psi.																														
7:30 - - - - -							TIH w/ retainer & tubing to 1434'...roataate and set retainer successfully...STING OUT																														
8:15 200 0 2.50 45.00 H2O							Pumped 45.0bbbl water to load and circulate casing clean																														
8:38 - - - - -							SD...SHUTIN CASING....Prepare to tet casing																														
8:40 650 650 1.00 1.00 H2O							Pumped 1.0bbl water to test casing...TESTED GOOD...witnessed by both BLM and NMOCD																														
- - - - -							SD																														
8:55 - - - - -							TOOH w/ tubing and setting tool																														
9:15 - - - - -							MIRU wireline servicee...prepare for CBL																														
9:25 - - - - -							RIH w/ CBL tool and wireline to 1652'																														
- - - - -							ROOH w/ wireline and perform CBL																														
- - - - -							SD																														
10:05 - - - - -							TIH w/ setting tool & tbg to 1434'...STING INTO RET																														
10:35 200 0 2.00 3.00 H2O							Pumped 2.5bbbl water to est. inj. Rate...had injecton rate at 2.0bpm at 380psi...prepare for cement																														
10:43 100 0 2.00 8.00 CEMENT							Pumped 8.0bbbl cement slurry ((39sx; 15.8ppg, 1.15cuft/ft, 5.0gals/sk)) 17sx below ret., 22sx above retainer																														
10:47 50 0 1.00 1.00 H2O							Pumped 1.0bbl displacement																														
10:48 - - - - -							SD...STING OUT of retainer																														
10:49 - - - - -							Pumped 0.3bbl displacement.....Est TOC at 1250'																														
10:50 - - - - -							SD...WOC 4hrs																														
10:57 - - - - -							TOOH w/ tubng and LD setting tool																														
11:30 - - - - -							SD...resume WOC time																														
14:50 - - - - -							TIH w/ tag sub and tubing to tag TOC...Tagged TOC at 1251'...TOOH w/ tbg and LD TS...Rig up wireline services																														
15:24 - - - - -							RIH w/ perf gun and wireline to perf depth of 128'...perforated casing successfully																														
15:30 - - - - -							ROOH w/ wireline and LD perf gun...verified all shots fired																														
15:32 - - - - -							Shut in casing to establish injection rate...NO INJ> RATE EST....pressure out to 550psi...SD...rig up wireline services																														
15:59 - - - - -							RIH w/ perf gun and wireline to perf depth of 50'...perforated casing successfully																														
16:02 - - - - -							ROOH w/ wireline and LD perf gun...verified all shots fired																														
16:06 - - - - -							Shut in casing to establish injection rate...NO																														

[illegible]



*RePage 6 of 11CD*



36.84121°N, 108.47910°W



Map

*Released to Imag*













**District I**  
1625 N. French Dr., Hobbs, NM 88240  
Phone:(575) 393-6161 Fax:(575) 393-0720  
**District II**  
811 S. First St., Artesia, NM 88210  
Phone:(575) 748-1283 Fax:(575) 748-9720  
**District III**  
1000 Rio Brazos Rd., Aztec, NM 87410  
Phone:(505) 334-6178 Fax:(505) 334-6170  
**District IV**  
1220 S. St Francis Dr., Santa Fe, NM 87505  
Phone:(505) 476-3470 Fax:(505) 476-3462

**State of New Mexico**  
**Energy, Minerals and Natural Resources**  
**Oil Conservation Division**  
**1220 S. St Francis Dr.**  
**Santa Fe, NM 87505**

CONDITIONS  
  
Action 362824

CONDITIONS

Operator: AZTEC WELL SERVICING CO 300 Legion Road Aztec, NM 87410	OGRID: 191362
	Action Number: 362824
	Action Type: [C-103] Sub. Plugging (C-103P)

CONDITIONS

Created By	Condition	Condition Date
loren.diede	None	7/12/2024