

U.S. Department of the Interior
BUREAU OF LAND MANAGEMENT

| | | |
|-----------------------------------|---|--|
| Well Name: POKER LAKE UNIT | Well Location: T24S / R31E / SEC 33 / SENE / 32.1768407 / -103.7771829 | County or Parish/State: EDDY / NM |
| Well Number: 402H | Type of Well: OIL WELL | Allottee or Tribe Name: |
| Lease Number: NMNM0506A | Unit or CA Name: | Unit or CA Number: NMNM71016X |
| US Well Number: 3001541229 | Well Status: Producing Oil Well | Operator: XTO PERMIAN OPERATING LLC |

Accepted for record only BLM approval required NMOCD 7/18/24 **KF**

Notice of Intent

Sundry ID: 2770139

Type of Submission: Notice of Intent

Type of Action: Temporary Abandonment

Date Sundry Submitted: 01/16/2024

Time Sundry Submitted: 08:04

Date proposed operation will begin: 02/16/2024

Procedure Description: XTO Permian Operating, LLC. respectfully requests to temporary abandon the above mentioned well due to it being economic to repair at a later date after the fracs in the area are complete. If they positively affect other offset wells in the area, we will return this well to production, if not we will P&A at a later date. Please see attached TA procedure, proposed WBD, and current WBD for your review.

Surface Disturbance

Is any additional surface disturbance proposed?: No

NOI Attachments

Procedure Description

Poker_Lake_Unit_402H_Prelim_NOI_TA_Procedure__WBDs_Current___Proposed_20240116200357.pdf

Well Name: POKER LAKE UNIT

Well Location: T24S / R31E / SEC 33 /
SENE / 32.1768407 / -103.7771829County or Parish/State: EDDY /
NM

Well Number: 402H

Type of Well: OIL WELL

Allottee or Tribe Name:

Lease Number: NMNM0506A

Unit or CA Name:

Unit or CA Number:
NMNM71016X

US Well Number: 3001541229

Well Status: Producing Oil Well

Operator: XTO PERMIAN
OPERATING LLC

Conditions of Approval

Specialist Review

TA_COA_20240209122000.pdf

Operator

I certify that the foregoing is true and correct. Title 18 U.S.C. Section 1001 and Title 43 U.S.C. Section 1212, make it a crime for any person knowingly and willfully to make to any department or agency of the United States any false, fictitious or fraudulent statements or representations as to any matter within its jurisdiction. Electronic submission of Sundry Notices through this system satisfies regulations requiring a

Operator Electronic Signature: KRISTEN HOUSTON

Signed on: JAN 28, 2024 06:02 PM

Name: XTO PERMIAN OPERATING LLC

Title: Regulatory Analyst

Street Address: 6401 HOLIDAY HILL ROAD BLDG 5

City: MIDLAND

State: TX

Phone: (432) 620-6700

Email address: KRISTEN.HOUSTON@EXXONMOBIL.COM

Field

Representative Name:

Street Address:

City:

State:

Zip:

Phone:

Email address:

BLM Point of Contact

BLM POC Name: JONATHON W SHEPARD

BLM POC Title: Petroleum Engineer

BLM POC Phone: 5752345972

BLM POC Email Address: jshepard@blm.gov

Disposition: Approved

Disposition Date: 02/09/2024

TEMPORARILY ABANDON WELLBORE
POKER LAKE UNIT 402H
EDDY COUNTY, NEW MEXICO
Class II

| MASIP | MAOP | MAWP | Surface Csg Yield |
|-----------|-----------|-----------|-------------------|
| 1,000 psi | 1,000 psi | 3,000 psi | 2730 PSI |

SUMMARY: Plug and abandon wellbore according to BLM regulations.

- 1) MIRU plugging company. Set open top steel pit for plugging.
- 2) POOH LD rods and pump.
- 3) ND WH and NU 3K manual BOP. Function test BOP.
- 4) POOH tbg.
- 5) MIRU WLU, RIH GR to 7530'; RIH set CIBP at 7500', pressure test to 500 PSI for 30 minutes; Dump bail 35' **Class H** cement from 7500' to 7465'. WOC and tag to verify TOC. (T/ Perf)
- 6) Circulate salt gel from 7465' to the surface.
- 7) Perform state witnessed MIT to 500 psi for 30 minutes.
- 8) ND BOP. RDMO PU, transport trucks, and pump truck.
- 9) Pull fluid from steel tank and haul to disposal. Release steel tank.



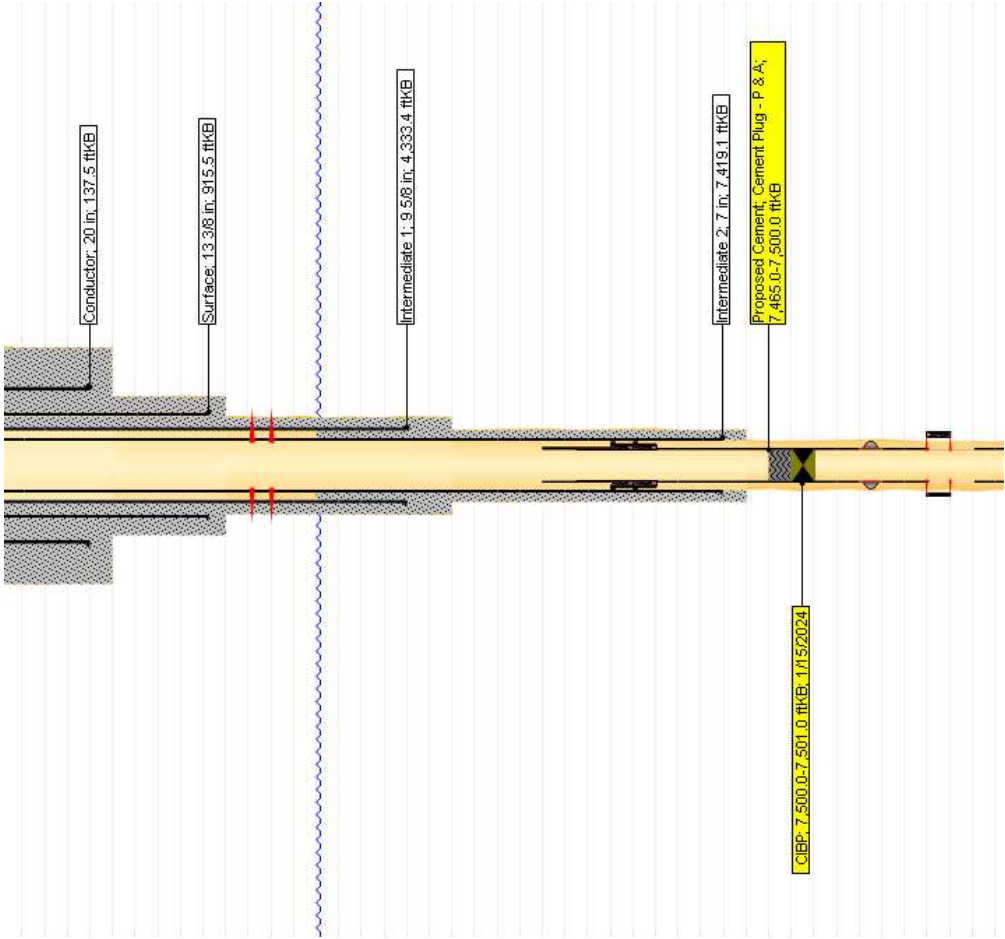
Pre-Pull Report

Well Name: Poker Lake Unit 402H

| APIUWI 3001541229 | | SAP Cost Center ID 1140471001 | | Permit Number | | State/Province New Mexico | | County Eddy | | Surface Location T24S-R31E-S33 | | Spud Date 12/11/2014 08:15 | | Original KB Elevation (ft) 3,484.50 | | Ground Elevation (ft) 3,467.00 | | KB-Ground Distance (ft) 17.50 | | Surface Casing Flange Elevatio... | |
|--------------------------------------|--|----------------------------------|--|----------------------------------|--|---|--|-----------------------------------|--|-------------------------------------|--|-------------------------------|--|--|--|---|--|----------------------------------|--|-----------------------------------|--|
| Wellbores | | | | | | | | | | | | | | | | | | | | | |
| Wellbore Name Original Hole | | Parent Wellbore Original Hole | | Wellbore APIUWI 3001541229 | | Lat/Long Datum NAD 27 | | Latitude (°) 32° 10' 36.203" N | | Longitude (°) 103° 46' 36.185" W | | Start Depth (ftKB) 20.0 | | Profile Type Horizontal | | Total Depth of Wellbore (ftKB) 16,665.00 | | | | | |
| Survey Data | | | | | | | | | | | | | | | | | | | | | |
| Measured Depth (ftKB) | | Inclination (°) | | DLS (°/100ft) | | | | | | | | | | | | | | | | | |
| 7,869.00 | | 36.76 | | 9.07 | | | | | | | | | | | | | | | | | |
| Measured Depth (ftKB) | | Inclination (°) | | DLS (°/100ft) | | | | | | | | | | | | | | | | | |
| 7,900.00 | | 38.52 | | 5.73 | | | | | | | | | | | | | | | | | |
| Measured Depth (ftKB) | | Inclination (°) | | DLS (°/100ft) | | | | | | | | | | | | | | | | | |
| 7,931.00 | | 41.52 | | 9.69 | | | | | | | | | | | | | | | | | |
| Measured Depth (ftKB) | | Inclination (°) | | DLS (°/100ft) | | | | | | | | | | | | | | | | | |
| 7,900.00 | | 44.44 | | 9.51 | | | | | | | | | | | | | | | | | |
| Kick Offs & Key Depths | | | | | | | | | | | | | | | | | | | | | |
| Type | | | | Top Depth (ftKB) | | | | | | | | | | | | | | | | | |
| Top of Curve = KOP | | | | | | | | | | | | | | | | | | | | | |
| Secondary Type | | | | Planned Start Depth (ftKB) | | | | | | | | | | | | | | | | | |
| Casing Strings | | | | | | | | | | | | | | | | | | | | | |
| Casing Description Conductor | | Set Depth (ftKB) 137.5 | | String Nominal OD (in) 20 | | Weight/Length (lb/ft) 94.00 | | String Grade J-55 | | | | | | | | | | | | | |
| Casing Description Surface | | Set Depth (ftKB) 915.5 | | String Nominal OD (in) 13 3/8 | | Weight/Length (lb/ft) 54.50 | | String Grade J-55 | | | | | | | | | | | | | |
| Casing Description Intermediate 1 | | Set Depth (ftKB) 4,333.4 | | String Nominal OD (in) 9 5/8 | | Weight/Length (lb/ft) 40.00 | | String Grade J-55 | | | | | | | | | | | | | |
| Casing Description Intermediate 2 | | Set Depth (ftKB) 7,419.2 | | String Nominal OD (in) 7 | | Weight/Length (lb/ft) 26.00 | | String Grade HCP-110 | | | | | | | | | | | | | |
| Casing Description Production | | Set Depth (ftKB) 16,619.0 | | String Nominal OD (in) 4 1/2 | | Weight/Length (lb/ft) 11.60 | | String Grade HCP-110 | | | | | | | | | | | | | |
| Marker Joint Details | | | | | | | | | | | | | | | | | | | | | |
| Top Connection Thread | | Joints | | Length (ft) | | Top Depth (ftKB) | | Bottom Depth (ftKB) | | | | | | | | | | | | | |
| Perforations | | | | | | | | | | | | | | | | | | | | | |
| Date 7/16/2016 | | Top (ftKB) 8,854.0 | | Btm (ftKB) 8,855.0 | | Linked Zone Lower Brushy Canyon, Original Hole | | | | | | | | | | | | | | | |

| MD (ftKB) | TVD (ftKB) | Incl (°) | Vertical schematic (actual) |
|-----------|------------|----------|--|
| 140.1 | 140.1 | 1.4 | |
| 3,228.0 | 3,227.7 | 0.2 | |
| 4,355.0 | 4,354.6 | 0.8 | |
| 7,316.9 | 7,316.3 | 0.9 | |
| 7,343.2 | 7,342.5 | 0.9 | |
| 8,707.3 | 8,120.5 | 90.1 | |
| 9,046.3 | 8,116.6 | 90.8 | |
| 9,378.3 | 8,115.7 | 90.0 | |
| 9,704.1 | 8,114.8 | 89.2 | |
| 10,043.6 | 8,111.9 | 90.9 | |
| 10,382.9 | 8,109.3 | 90.9 | Production; 6 1/8 in; 16,665.0 ftKB |
| 10,721.5 | 8,110.1 | 90.3 | |
| 11,047.9 | 8,105.4 | 90.8 | |
| 11,387.5 | 8,103.5 | 90.4 | |
| 11,726.7 | 8,101.3 | 89.5 | |
| 12,065.6 | 8,097.9 | 91.1 | |
| 12,405.2 | 8,095.8 | 90.5 | |
| 12,744.1 | 8,094.1 | 90.1 | |
| 13,083.3 | 8,092.7 | 90.1 | |
| 13,422.6 | 8,092.0 | 90.3 | |
| 13,761.5 | 8,091.1 | 90.2 | Production; 4 1/2 in; 16,619.0 ftKB TD - Original Hole; 16,665.0 ftKB |
| 14,099.7 | 8,089.7 | 90.3 | |
| 14,438.6 | 8,084.1 | 90.5 | |
| 14,777.6 | 8,082.1 | 90.4 | |
| 15,117.1 | 8,081.5 | 89.6 | |
| 15,456.7 | 8,079.4 | 90.9 | |
| 15,776.2 | 8,089.2 | 90.3 | |
| 16,115.8 | 8,068.6 | 90.1 | |
| 16,455.4 | 8,071.7 | 89.0 | |
| 16,609.3 | 8,073.2 | 90.1 | |

PLU 402 - Proposed WBD



Dump Bail 35' Class H atop
CIBP from 7500' to 7465'. PT
CIBP to 500 PSIG for 30 min.
WOC and Tag. T/Kickoff

- 915' Surface Casing Shoe
- 3333' TOC
- 4333' Intermediate Casing Shoe 1
- 4378' T/Delaware
- 7317' TOL
- 7419' Production Casing Shoe
- 7500' Kickoff
- 8854' T/Perfs

BUREAU OF LAND MANAGEMENT

Carlsbad Field Office
620 East Greene Street
Carlsbad, New Mexico 88220
575-234-5972

Conditions of Approval for Temporary Abandonment of Wells

Definition: A temporarily abandoned well is a completion that is not capable of production in paying quantities, but which may have future value. Pursuant to 43 CFR 3162.3-4 (c), no well may be temporarily abandoned for more than 30 days without the prior approval of the authorized officer.

1. TA status will be effective for a period of up to one year from the date of sundry approval and can be renewed annually thereafter per IM NM-2016-017.
2. A bridge plug (CIBP) must be installed 50 to 100 feet above any open perforations/open hole/kick off point. The CIBP must be capped with either a minimum of 25 sacks of cement if placed with tubing or 35 feet of cement if placed with a bailer. The top of the cement must be verified by tagging.
3. The wellbore must be filled with corrosion inhibited fluid and pressure tested to 500 psi. The casing shall be capable of holding this pressure for at least 30 minutes. If the well does not pass the casing integrity test, then the operator shall, within 30 days, submit a procedure to either repair the casing or to plug and abandon the well.
4. Contact the appropriate BLM office at least 24 hours prior to the scheduled Casing Integrity Test. For wells in Eddy County, 575-361-2822; Lea County 575-393-3612.
5. All downhole production/injection equipment (tubing, rods, etc.) shall be removed from the casing if it is not isolated by a packer.
6. A bradenhead test must be conducted. If the test indicates a problem, a remedial plan and time frame for remediation shall be submitted within ninety (90) days of the test.
7. Submit a subsequent Sundry Notice (Form 3160-5) with the following information:
 - a. A well bore diagram with all perforations, CIBP's, and tops of cement on CIBP's.
 - b. A description of the temporary abandonment procedure.
 - c. A clear copy or the original of the pressure test chart.

District I
1625 N. French Dr., Hobbs, NM 88240
Phone:(575) 393-6161 Fax:(575) 393-0720
District II
811 S. First St., Artesia, NM 88210
Phone:(575) 748-1283 Fax:(575) 748-9720
District III
1000 Rio Brazos Rd., Aztec, NM 87410
Phone:(505) 334-6178 Fax:(505) 334-6170
District IV
1220 S. St Francis Dr., Santa Fe, NM 87505
Phone:(505) 476-3470 Fax:(505) 476-3462

State of New Mexico
Energy, Minerals and Natural Resources
Oil Conservation Division
1220 S. St Francis Dr.
Santa Fe, NM 87505

CONDITIONS

Action 318258

CONDITIONS

| | |
|---|--|
| Operator: XTO ENERGY, INC 6401 Holiday Hill Road Midland, TX 79707 | OGRID: 5380 |
| | Action Number: 318258 |
| | Action Type: [C-103] NOI Temporary Abandonment (C-103I) |

CONDITIONS

| Created By | Condition | Condition Date |
|------------|---|----------------|
| kfortner | Accepted for record only BLM approval required NMOCD 7/18/24 KF | 7/18/2024 |