

Well Name: ROSA UNIT	Well Location: T31N / R5W / SEC 7 / SESE / 36.90951 / -107.39774	County or Parish/State: RIO ARRIBA / NM
Well Number: 154B	Type of Well: CONVENTIONAL GAS WELL	Allottee or Tribe Name:
Lease Number: NMSF078767	Unit or CA Name: ROSA UNIT, ROSA UNIT--MV	Unit or CA Number: NMNM78407A, NMNM78407E
US Well Number: 3003930804	Operator: LOGOS OPERATING LLC	

Notice of Intent

Sundry ID: 2797432

Type of Submission: Notice of Intent

Type of Action: Other

Date Sundry Submitted: 06/26/2024

Time Sundry Submitted: 03:12

Date proposed operation will begin: 06/26/2024

Procedure Description: The Rosa Unit 154B is at risk of pressure influence from the nearby Pad 24 completions. It is also an ideal candidate to install pressure monitoring equipment for Pad 24 completions. In order to minimize risk of high pressure at surface and monitor nearby completions, it is recommended to isolate the wellbore and actively monitor pressure via downhole gauge for a total well observation period of 9-12 months. See attached procedure.

Surface Disturbance

Is any additional surface disturbance proposed?: No

NOI Attachments

Procedure Description

Rosa_Unit_154B_Wellbore_Isolation_Procedure_20240626151208.pdf

Well Name: ROSA UNIT

Well Location: T31N / R5W / SEC 7 /
SESE / 36.90951 / -107.39774County or Parish/State: RIO
ARRIBA / NM

Well Number: 154B

Type of Well: CONVENTIONAL GAS
WELL

Allottee or Tribe Name:

Lease Number: NMSF078767

Unit or CA Name: ROSA UNIT, ROSA
UNIT--MVUnit or CA Number:
NMNM78407A, NMNM78407E

US Well Number: 3003930804

Operator: LOGOS OPERATING LLC

Operator

I certify that the foregoing is true and correct. Title 18 U.S.C. Section 1001 and Title 43 U.S.C. Section 1212, make it a crime for any person knowingly and willfully to make to any department or agency of the United States any false, fictitious or fraudulent statements or representations as to any matter within its jurisdiction. Electronic submission of Sundry Notices through this system satisfies regulations requiring a

Operator Electronic Signature: ETTA TRUJILLO

Signed on: JUN 26, 2024 03:12 PM

Name: LOGOS OPERATING LLC

Title: Regulatory Specialist

Street Address: 2010 AFTON PLACE

City: Farmington

State: NM

Phone: (505) 324-4154

Email address: ETRUJILLO@LOGOSRESOURCESLLC.COM

Field

Representative Name:

Street Address:

City:

State:

Zip:

Phone:

Email address:

BLM Point of Contact

BLM POC Name: KENNETH G RENNICK

BLM POC Title: Petroleum Engineer

BLM POC Phone: 5055647742

BLM POC Email Address: krennick@blm.gov

Disposition: Approved

Disposition Date: 06/26/2024

Signature: Kenneth Rennick

**WELLBORE ISOLATION/PRESSURE MONITORING-NMOCD (2024)**

Rosa Unit 154B
30-039-30804
990' FSL & 880' FEL
Section 07, T31N, R05W
Rio Arriba, New Mexico
LAT: 36.9094162° N LONG: -107.397728° W
Mesaverde/Mancos/Dakota

PROJECT OBJECTIVE:

The Rosa Unit 154B is at risk of pressure influence from the nearby Pad 24 completions. It is also an ideal candidate to install pressure monitoring equipment for Pad 24 completions. In order to minimize risk of high pressure at surface and monitor nearby completions, it is recommended to isolate the wellbore and actively monitor pressure via downhole gauge for a total well observation period of 9-12 months.

WORKOVER PROCEDURE:

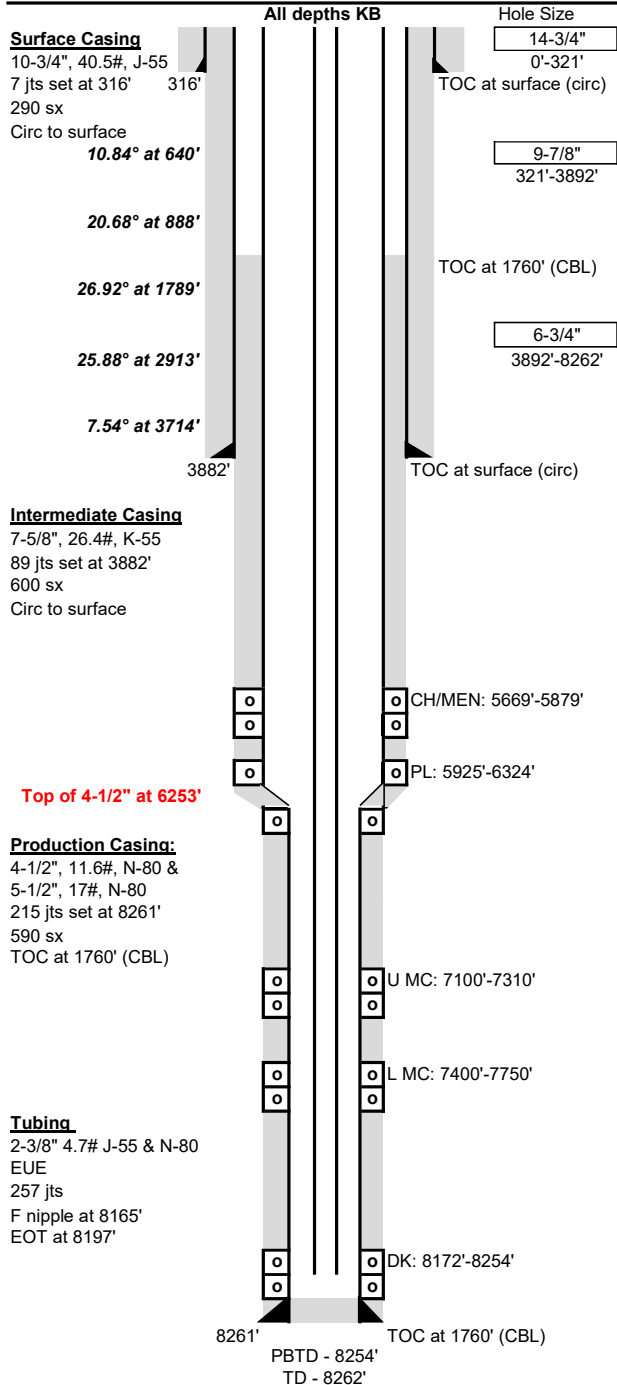
1. Hold safety meeting. MIRU workover rig. Place fire and safety equipment in strategic locations. Comply with all LOGOS, BLM, and NMOCD rules and regulations.
2. Lay flow lines. Check and record casing and tubing pressures. Sell pressure down to line. Kill well if necessary.
3. Nipple down wellhead and nipple up BOP.
4. TOOH and stand back tubing.
5. Set bridge plug within 50' of the Dakota perforations.
6. TIH and set cement retainer at ~7050'.
7. RIH with pressure gauge and tubing and sting into retainer.
8. Leave well shut in during offset completions and post completions for pressure monitoring.
9. Once offset completions are complete and adequate pressure monitoring data has been collected, TOOH with tubing and laydown pressure gauge.
10. Trip in hole and mill out cement retainer and bridge plug.
11. Run 2-3/8" tubing back in hole and return well to production.



Well Name: Rosa Unit 154B
 Location: P-07-31N-05W 990' FSL & 880' FEL
 County: Rio Arriba, NM
 API #: 30-039-30804
 Co-ordinates: Lat 36.9094162, Long -107.397728 NAD83
 Elevations: GROUND: 6355'
 KB: 6371'
 Depths (KB): PBDT: 8254'
 TD: 8262'

Date Prepared: 4/30/2024 Peace
 Reviewed By: 05/13/2024 *Kathryn Moss*
 Last Updated:
 Spud Date: 9/28/2009
 Completion Date: 11/17/2009
 Last Workover Date: 7/26/2010

DIRECTIONAL WELLBORE w/ TAPERED CSG



Surface Casing: (9/28/2009)
 Drilled a 14-3/4" surface hole to 321'. Set 7 jts 10-3/4", 40.5#, J-55 csg at 316'.
 Cmt'd w/ 290 sx Type III cmt (521 cf, 13.5 ppg, 1.796 yld). Circ 50 bbls cmt to surface.

Intermediate Casing: (10/5/2009)
 Drilled a 9-7/8" intermediate hole to 3892'. Set 89 jts 7-5/8", 26.4#, K-55 csg at 3882'.
 Cmt'd w/ 500 sx Extendacem + 5# Pheno seal cmt (1365 cf, 11.5 ppg, 2.73 yld).
 Tailed w/ 100 sx Premium cmt (118 cf, 15.6 ppg, 1.178 yld). Circ 100 bbls to surf.

Production Casing: (10/7/2009)
 Drilled a 6-3/4" production hole to 8262'. Set 51 jts 4-1/2", 11.6#, N-80 (6253') &
 164 jts 5-1/2", 17#, N-80 csg at 8261'. Top of 4-1/2" csg at 6253' (per csg tally).
 Cmt'd w/ 590 sx Fracem cmt (826 cf, 13.1 ppg, 1.4 yld). TOC at 1760' (CBL).

Tubing: (7/2010)	Length (ft)
KB	16
(133) 2-3/8" 4.7# N-80 8rd EUE tbg jts	4211
(123) 2-3/8" 4.7# J-55 8rd EUE tbg jts	3936
(1) 1.78" F-nipple @ 8165'	1
(1) 2-3/8" 4.7# J-55 tbg jt	32
(1) MS w/ expendable check	1

Set at: 8197 ft

Artificial Lift:
 Plunger lift

Perforations: (10/2009)
CH/MEN: (5669'-5879') 1 SPF, 52, 0.34" holes. 5669', 71', 73', 5703', 05', 07', 09', 11', 13', 15', 17', 19', 21', 23', 25', 27', 29', 31', 33', 35', 37', 39', 41', 43', 45', 47', 49', 51', 53', 55', 57', 59', 61', 63', 65', 67', 5849', 51', 53', 55', 57', 59', 61', 63', 65', 67', 69', 71', 73', 75', 77', 79'. Acidized w/ 993 gals 15% FE. Frac w/ 85,904# 20/40 sand.
PL: (5925'-6324') 1 SPF, 56, 0.34" holes. 5925', 27', 31', 33', 41', 45', 49', 53', 72', 74', 76', 79', 80', 82', 94', 96', 98', 6002', 04', 06', 10', 15', 26', 30', 32', 34', 36', 38', 47', 49', 51', 96', 6123', 25', 48', 50', 52', 76', 78', 80', 82', 84', 99', 6201', 07', 09', 28', 30', 56', 58', 60', 6320', 22', 24'. Acidize w/ 998 gals 15% FE. Frac w/ 81,902# 20/40 sand.
U MC: (7100'-7310') 3 SPF, 66, 0.34" holes. 7100', 10', 20', 30', 40', 50', 60', 70', 80', 90', 7200', 10', 20', 30', 40', 50', 60', 70', 80', 90', 7300', 10'.
 Acidized w/ 2,000 gal 15% FE acid. Frac w/ 5,100# 100 mesh, followed by 119,800# 40/70 sand.
L MC: (7400'-7750') 3 SPF, 75, 0.34" holes. 7400', 10', 20', 30', 40', 50', 60', 70', 80', 90', 7500', 10', 20', 30', 40', 50', 60', 70', 80', 7650', 90', 7738', 42', 46', 50'.
 Acidized w/ 2037 gal 15% FE acid. Frac w/ 4,900# mesh, followed by 97,800# 40/70 sand.
DK: (8172'-8254') 3 SPF, 66, 0.34" holes. 8172', 76', 78', 82', 86', 94', 8202', 10', 14', 18', 20', 24', 28', 32', 34', 38', 40', 42', 46', 48', 50', 8254'. Acidize w/ 2,500 gal 15% FE acid. Frac w/ 5,000# 100 mesh, followed by 102,900# 40/70 sand.

Formations:	MD
Lewis	3770'
Cliff House	5653'
Point Lookout	5925'
Mancos	6429'
Graneros	8035'
Dakota	8170'

Additional Notes:
10/2009- Well was drilled and completed as a DK/MC/MV directional wellbore.
11/2009- TBG Repair. Pulled 112 N-80 tubing, run back in w/ 112 tbg jts landing EOT at 8141'. RU wireline and perf'd tbg at 8069'-8089', attempted to produce the well, no success. Had to shut down due to winter closure.
7/2010- TBG Repair. Pulled tbging out and found the expendable check was not pumped off and the last jt was plugged with sand. Cleaned out 65' of fill. Landed EOT at 8197'.

Max deviation 26.92° at 1789'. Max DLS 6.78°/100' at 664'.

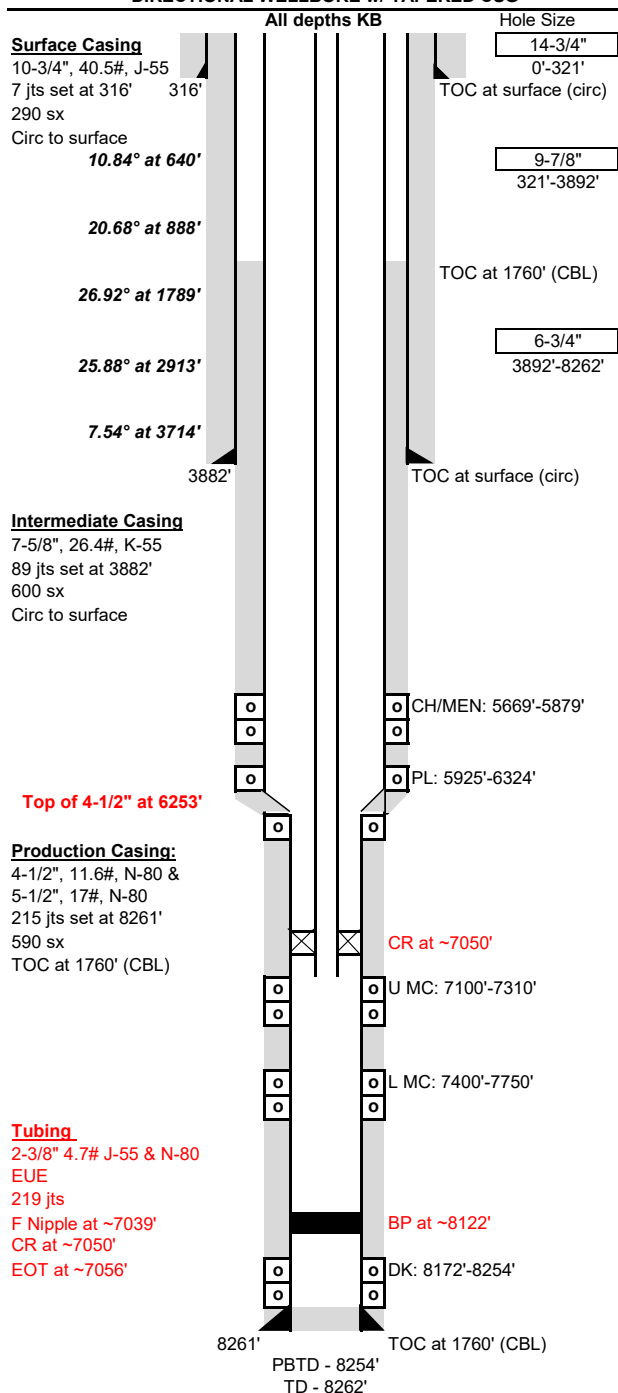


Proposed Isolation Wellbore Schematic

Well Name: Rosa Unit 154B
 Location: P-07-31N-05W 990' FSL & 880' FEL
 County: Rio Arriba, NM
 API #: 30-039-30804
 Co-ordinates: Lat 36.9094162, Long -107.397728 NAD83
 Elevations: GROUND: 6355'
 KB: 6371'
 Depths (KB): PBDT: 8254'
 TD: 8262'

Date Prepared: 4/30/2024 Peace
 Reviewed By:
 Last Updated:
 Spud Date: 9/28/2009
 Completion Date: 11/17/2009
 Last Workover Date: 7/26/2010

DIRECTIONAL WELLBORE w/ TAPERED CSG



Surface Casing: (9/28/2009)
 Drilled a 14-3/4" surface hole to 321'. Set 7 jts 10-3/4", 40.5#, J-55 csg at 316'.
 Cmt'd w/ 290 sx Type III cmt (521 cf, 13.5 ppg, 1.796 yld). Circ 50 bbls cmt to surface.

Intermediate Casing: (10/5/2009)
 Drilled a 9-7/8" intermediate hole to 3892'. Set 89 jts 7-5/8", 26.4#, K-55 csg at 3882'.
 Cmt'd w/ 500 sx Extendacem + 5# Pheno seal cmt (1365 cf, 11.5 ppg, 2.73 yld)
 Tailed w/ 100 sx Premium cmt (118 cf, 15.6 ppg, 1.178 yld). Circ 100 bbls to surf.

Production Casing: (10/7/2009)
 Drilled a 6-3/4" production hole to 8262'. Set 51 jts 4-1/2", 11.6#, N-80 (6253') &
 164 jts 5-1/2", 17#, N-80 csg at 8261'. Top of 4-1/2" csg at 6253' (per csg tally).
 Cmt'd w/ 590 sx Fraccem cmt(826 cf, 13.1 ppg, 1.4 yld). TOC at 1760' (CBL).

Tubing:	Length (ft)
KB	16
(~219) 2-3/8" 4.7# N-80 & J-55 8rd EUE tbq jts	7023
(1) 1.78" F-nipple	1
(1) P-4000C Gauge Assembly	6
(1) 2-3/8" x 4" pup jt	4
(1) CR stinger	6

Set at: 7056 ft

Artificial Lift:
 Plunger lift

Perforations: (10/2009)
CH/MEN: (5669'-5879') 1 SPF, 52, 0.34" holes. 5669', 71', 73', 5703', 05', 07', 09', 11', 13', 15', 17', 19', 21', 23', 25', 27', 29', 31', 33', 35', 37', 39', 41', 43', 45', 47', 49', 51', 53', 55', 57', 59', 61', 63', 65', 67', 5849', 51', 53', 55', 57', 59', 61', 63', 65', 67', 69', 71', 73', 75', 77', 79'. Acidized w/ 993 gals 15% FE. Frac w/ 85,904# 20/40 sand.
PL: (5925'-6324') 1 SPF, 56, 0.34" holes. 5925', 27', 31', 33', 41', 45', 49', 53', 72', 74', 76', 79', 80', 82', 94', 96', 98', 6002', 04', 06', 10', 15', 26', 30', 32', 34', 36', 38', 47', 49', 51', 96', 6123', 25', 48', 50', 52', 76', 78', 80', 82', 84', 99', 6201', 07', 09', 28', 30', 56', 58', 60', 6320', 22', 24'. Acidize w/ 998 gals 15% FE. Frac w/ 81,902# 20/40 sand.
U MC: (7100'-7310') 3 SPF, 66, 0.34" holes. 7100', 10', 20', 30', 40', 50', 60', 70', 80', 90', 7200', 10', 20', 30', 40', 50', 60', 70', 80', 90', 7300', 10'.
 Acidized w/ 2,000 gal 15% FE acid. Frac w/ 5,100# 100 mesh, followed by 119,800# 40/70 sand.
L MC: (7400'-7750') 3 SPF, 75, 0.34" holes. 7400', 10', 20', 30', 40', 50', 60', 70', 80', 90', 7500', 10', 20', 30', 40', 50', 60', 70', 80', 7650', 90', 7738', 42', 46', 50'.
 Acidized w/ 2037 gal 15% FE acid. Frac w/ 4,900# mesh, followed by 97,800# 40/70 sand.
DK: (8172'-8254') 3 SPF, 66, 0.34" holes. 8172', 76', 78', 82', 86', 94', 8202', 10', 14', 18', 20', 24', 28', 32', 34', 38', 40', 42', 46', 48', 50', 8254'. Acidize w/ 2,500 gal 15% FE acid. Frac w/ 5,000# 100 mesh, followed by 102,900# 40/70 sand.

Formations:	MD
Lewis	3770'
Cliff House	5653'
Point Lookout	5925'
Mancos	6429'

Additional Notes:
10/2009- Well was drilled and completed as a DK/MC/MV directional wellbore.
11/2009- TBG Repair. Pulled 112 N-80 tubing, run back in w/ 112 tbq jts landing EOT at 8141'. RU wireline and perf'd tbq at 8069'-8089', attempted to produce the well, no success. Had to shut down due to winter closure.
7/2010- TBG Repair. Pulled tbqing out and found the expendable check was not pumped off and the last it was plugged with sand. Cleaned out 65' of fill. Landed EOT at 8197'.
Max deviation 26.92° at 1789'. Max DLS 6.78°/100' at 664'.

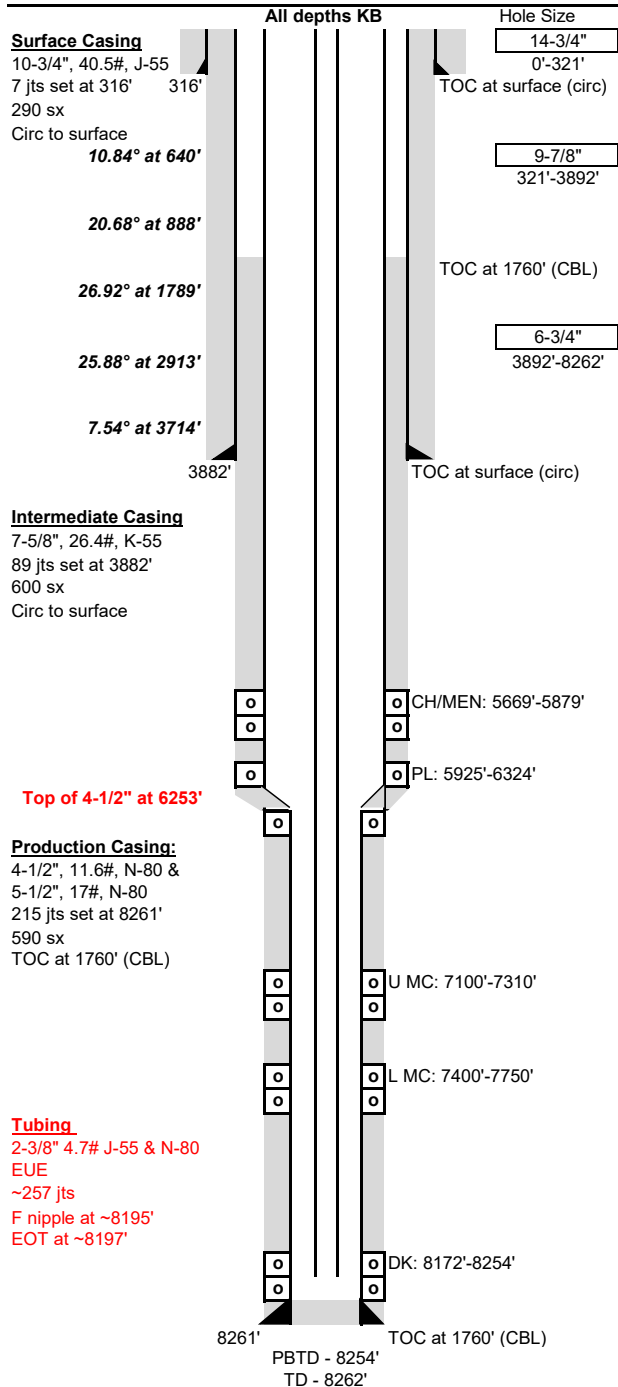


Proposed Return to Production Wellbore Schematic

Well Name: Rosa Unit 154B
 Location: P-07-31N-05W 990' FSL & 880' FEL
 County: Rio Arriba, NM
 API #: 30-039-30804
 Co-ordinates: Lat 36.9094162, Long -107.397728 NAD83
 Elevations: GROUND: 6355'
 KB: 6371'
 Depths (KB): PBDT: 8254'
 TD: 8262'

Date Prepared: 4/30/2024 Peace
 Reviewed By:
 Last Updated:
 Spud Date: 9/28/2009
 Completion Date: 11/17/2009
 Last Workover Date: 7/26/2010

DIRECTIONAL WELLBORE w/ TAPERED CSG



Surface Casing: (9/28/2009)
 Drilled a 14-3/4" surface hole to 321'. Set 7 jts 10-3/4", 40.5#, J-55 csg at 316'.
 Cmt'd w/ 290 sx Type III cmt (521 cf, 13.5 ppg, 1.796 yld). Circ 50 bbls cmt to surface.

Intermediate Casing: (10/5/2009)
 Drilled a 9-7/8" intermediate hole to 3892'. Set 89 jts 7-5/8", 26.4#, K-55 csg at 3882'.
 Cmt'd w/ 500 sx Extendacem + 5# Pheno seal cmt (1365 cf, 11.5 ppg, 2.73 yld)
 Tailed w/ 100 sx Premium cmt (118 cf, 15.6 ppg, 1.178 yld). Circ 100 bbls to surf.

Production Casing: (10/7/2009)
 Drilled a 6-3/4" production hole to 8262'. Set 51 jts 4-1/2", 11.6#, N-80 (6253') &
 164 jts 5-1/2", 17#, N-80 csg at 8261'. Top of 4-1/2" csg at 6253' (per csg tally).
 Cmt'd w/ 590 sx Fracem cmt (826 cf, 13.1 ppg, 1.4 yld). TOC at 1760' (CBL).

Tubing:	Length (ft)
KB	16
(~257) 2-3/8" 4.7# N-80 & J-55 8rd EUE tbq jts	8179
(1) 1.78" F-nipple	1
(1) MS w/ expendable check	1
Set at:	8197

Artificial Lift:
 Plunger lift

Perforations: (10/2009)
CH/MEN: (5669'-5879') 1 SPF, 52, 0.34" holes. 5669', 71', 73', 5703', 05', 07', 09', 11', 13', 15', 17', 19', 21', 23', 25', 27', 29', 31', 33', 35', 37', 39', 41', 43', 45', 47', 49', 51', 53', 55', 57', 59', 61', 63', 65', 67', 5849', 51', 53', 55', 57', 59', 61', 63', 65', 67', 69', 71', 73', 75', 77', 79'. Acidized w/ 993 gals 15% FE. Frac w/ 85,904# 20/40 sand.
PL: (5925'-6324') 1 SPF, 56, 0.34" holes. 5925', 27', 31', 33', 41', 45', 49', 53', 72', 74', 76', 79', 80', 82', 94', 96', 98', 6002', 04', 06', 10', 15', 26', 30', 32', 34', 36', 38', 47', 49', 51', 96', 6123', 25', 48', 50', 52', 76', 78', 80', 82', 84', 99', 6201', 07', 09', 28', 30', 56', 58', 60', 6320', 22', 24'. Acidize w/ 998 gals 15% FE. Frac w/ 81,902# 20/40 sand.
U MC: (7100'-7310') 3 SPF, 66, 0.34" holes. 7100', 10', 20', 30', 40', 50', 60', 70', 80', 90', 7200', 10', 20', 30', 40', 50', 60', 70', 80', 90', 7300', 10'.
 Acidized w/ 2,000 gal 15% FE acid. Frac w/ 5,100# 100 mesh, followed by 119,800# 40/70 sand.
L MC: (7400'-7750') 3 SPF, 75, 0.34" holes. 7400', 10', 20', 30', 40', 50', 60', 70', 80', 90', 7500', 10', 20', 30', 40', 50', 60', 70', 80', 7650', 90', 7738', 42', 46', 50'.
 Acidized w/ 2037 gal 15% FE acid. Frac w/ 4,900# mesh, followed by 97,800# 40/70 sand.
DK: (8172'-8254') 3 SPF, 66, 0.34" holes. 8172', 76', 78', 82', 86', 94', 8202', 10', 14', 18', 20', 24', 28', 32', 34', 38', 40', 42', 46', 48', 50', 8254'. Acidize w/ 2,500 gal 15% FE acid. Frac w/ 5,000# 100 mesh, followed by 102,900# 40/70 sand.

Formations:	MD
Lewis	3770'
Cliff House	5653'
Point Lookout	5925'
Mancos	6429'

Additional Notes:
10/2009- Well was drilled and completed as a DK/MC/MV directional wellbore.
11/2009- TBG Repair. Pulled 112 N-80 tubing, run back in w/ 112 tbq jts landing EOT at 8141'. RU wireline and perf'd tbq at 8069'-8089', attempted to produce the well, no success. Had to shut down due to winter closure.
7/2010- TBG Repair. Pulled tbqing out and found the expendable check was not pumped off and the last it was plugged with sand. Cleaned out 65' of fill. Landed EOT at 8197'.

Max deviation 26.92° at 1789'. Max DLS 6.78°/100' at 664'.

District I
1625 N. French Dr., Hobbs, NM 88240
Phone:(575) 393-6161 Fax:(575) 393-0720
District II
811 S. First St., Artesia, NM 88210
Phone:(575) 748-1283 Fax:(575) 748-9720
District III
1000 Rio Brazos Rd., Aztec, NM 87410
Phone:(505) 334-6178 Fax:(505) 334-6170
District IV
1220 S. St Francis Dr., Santa Fe, NM 87505
Phone:(505) 476-3470 Fax:(505) 476-3462

State of New Mexico
Energy, Minerals and Natural Resources
Oil Conservation Division
1220 S. St Francis Dr.
Santa Fe, NM 87505

CONDITIONS

Action 359041

CONDITIONS

Operator: LOGOS OPERATING, LLC 2010 Afton Place Farmington, NM 87401	OGRID: 289408
	Action Number: 359041
	Action Type: [C-103] NOI Workover (C-103G)

CONDITIONS

Created By	Condition	Condition Date
dmcclure	Approved to isolate the well. Operator shall submit a C-103R once the well has been isolated. Operator shall submit a C-103G prior to removing the isolation plug followed by another C-103R once the isolation plug has been removed.	7/19/2024