

Submit Copy To Appropriate District  
Office  
District I – (575) 393-6161  
1625 N. French Dr., Hobbs, NM 88240  
District II – (575) 748-1283  
811 S. First St., Artesia, NM 88210  
District III – (505) 334-6178  
1000 Rio Brazos Rd., Aztec, NM 87410  
District IV – (505) 476-3460  
1220 S. St. Francis Dr., Santa Fe, NM  
87505

State of New Mexico  
Energy, Minerals and Natural Resources

Form C-103  
Revised July 18, 2013

OIL CONSERVATION DIVISION  
1220 South St. Francis Dr.  
Santa Fe, NM 87505

WELL API NO. <b>30-025-01516</b>	
5. Indicate Type of Lease STATE <input checked="" type="checkbox"/> FEE <input type="checkbox"/>	
6. State Oil & Gas Lease No.	
7. Lease Name or Unit Agreement Name <b>Leamex Battery 2</b>	
8. Well Number <b>007</b>	
9. OGRID Number <b>331199</b>	
10. Pool name or Wildcat [43329] MALJAMAR; GRAYBURG-SAN ANDRES	
4. Well Location Unit Letter <b>F</b> , <b>1980</b> feet from the <b>North</b> line and <b>1976</b> feet from the <b>West</b> line Section <b>23</b> <b>17S</b> Township <b>33E</b> Range <b>NMPM</b> County	
11. Elevation (Show whether DR, RKB, RT, GR, etc.) <b>4150</b>	

12. Check Appropriate Box to Indicate Nature of Notice, Report or Other Data

NOTICE OF INTENTION TO:

PERFORM REMEDIAL WORK ☐ PLUG AND ABANDON ☒  
TEMPORARILY ABANDON ☐ CHANGE PLANS ☐  
PULL OR ALTER CASING ☐ MULTIPLE COMPL ☐  
DOWNHOLE COMMINGLE ☐  
CLOSED-LOOP SYSTEM ☐  
OTHER: ☐

SUBSEQUENT REPORT OF:

REMEDIAL WORK ☐ ALTERING CASING ☐  
COMMENCE DRILLING OPNS. ☐ P AND A ☐  
CASING/CEMENT JOB ☐  
OTHER: ☐

13. Describe proposed or completed operations. (Clearly state all pertinent details, and give pertinent dates, including estimated date of starting any proposed work). SEE RULE 19.15.7.14 NMAC. For Multiple Completions: Attach wellbore diagram of proposed completion or recompletion.

Maverick Permian LLC is respectfully requesting approval of the attached P&A plan.

**4" diameter 4' tall above ground marker**

**See attached Conditions of approval**

Spud Date:

Rig Release Date:

I hereby certify that the information above is true and complete to the best of my knowledge and belief.

SIGNATURE \_\_\_\_\_ TITLE **Regulatory Lead** DATE **7/25/2024**

Type or print name **Nicole Lee** E-mail address: **nicole.lee@mavresources.com** PHONE: **713-437-8097**

**For State Use Only**

APPROVED BY: **Kerry Fortner** TITLE **Compliance Officer A** DATE **7/25/24**  
Conditions of Approval (if any):



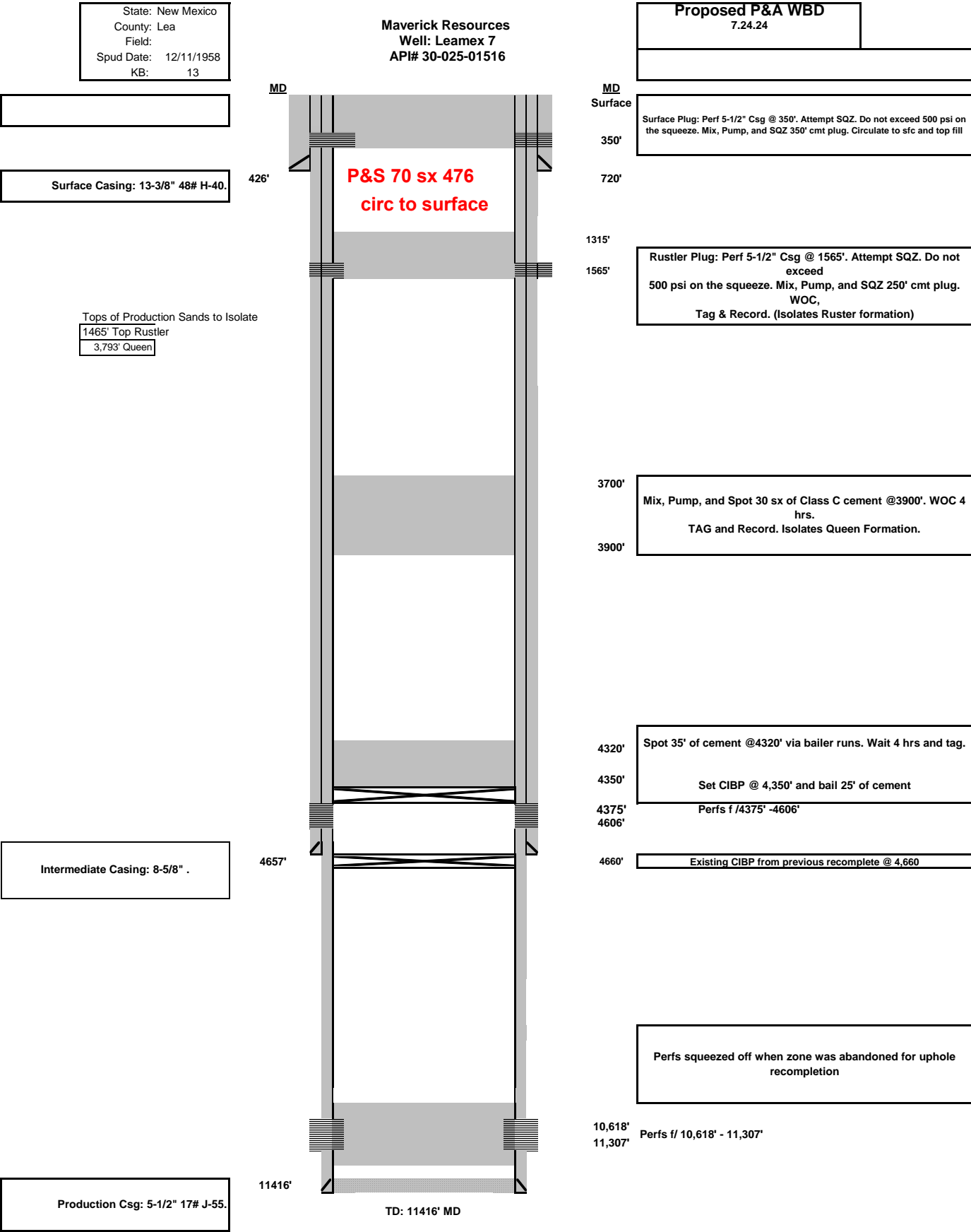
1111 Bagby Street • Suite 1600  
Houston • Texas • 77002  
713-437-8000

**Leamex 07  
P&A Procedure**

**Notes:**

**Procedure:**

1. Set CIBP @ 4,350' and bail 25' of cement
2. Spot 35' of cement via bailer runs. Wait 4 hrs and tag. Run CBL.
3. Mix, Pump, and Spot 30 sx of Class C cement @ 3,900'. WOC 4 hrs. TAG and Record. Isolates Queen Formation.
4. Perf 5-1/2" Csg @ 1565". Attempt SQZ. Do not exceed 500 psi on the squeeze. Mix, Pump, and SQZ 250' cmt plug. WOC, Tag & Record. Isolates Ruster formation
5. Surface Plug: Perf 5-1/2" Csg @ ~~360~~ Attempt SQZ. Do not exceed 500 psi on the squeeze. Mix, Pump, and SQZ 350' cmt plug. Circulate to sfc and top fill **P&S 70 sx 476 circ to surface**
6. Cut wellhead and install dry hole marker





LEAMEX 07  
Wellbore Diagram

Well Header				
API # 3002501516		State NEW MEXICO		County LEA
District PERMIAN CONVENTIONAL				
Division PERMIAN	Business Unit MAVERICK PERMIAN	Region RG_SE_NEW_MEXICO	Area A_GEMSTONE_CAPROCK	Total Depth (ftKB) 11,417.0

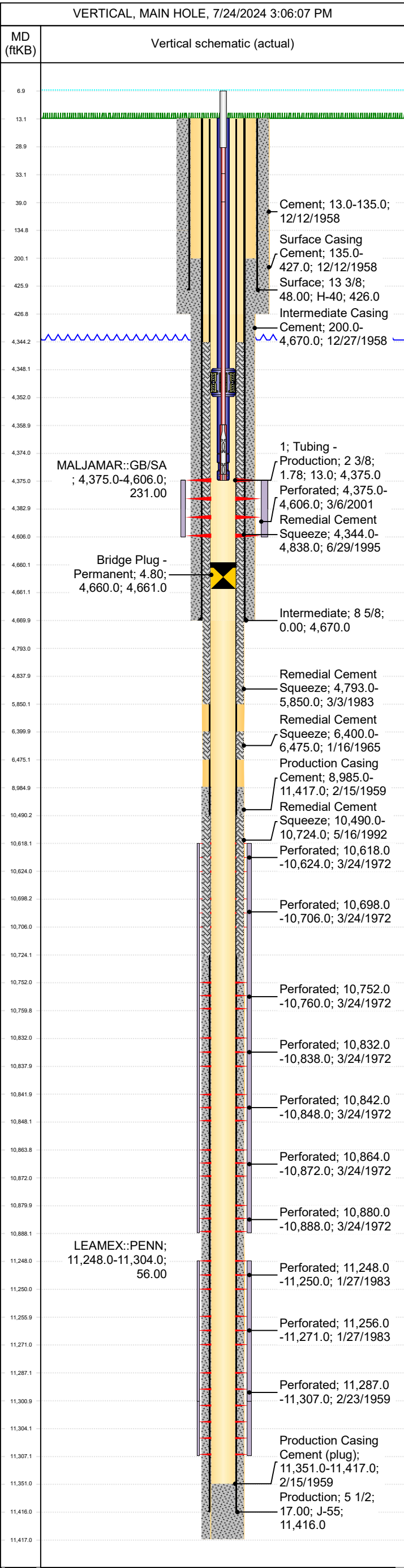
Wellbore Sections												
Section Des		Size (in)		Act Top (ftKB)	Act Top (TVD) (ftKB)	Act Btm (ftKB)	Act Btm (TVD) (ftKB)	Start Date		End Date		
SURFAC		17 1/2		13.0		427.0		12/11/1958		12/12/1958		
INTRM1		12 1/4		427.0		4,670.0		12/14/1958		12/27/1958		
PROD1		7 7/8		4,670.0		11,417.0		12/29/1958		2/13/1959		
Casing Strings												
Casing String: Surface 13 3/8" Set Depth: 426.0												
Casing Description Surface		Run Date 12/12/1958 00:00		OD (in) 13 3/8	OD Nom M... 13 3/8	ID (in) 12.72	ID Nom Mi... 12.715	Wt/Len (lb/ft) 48.00	String Grade H-40	Length (ft) 413.00	Top (ftKB) 13.0	Set Depth...
Item Des	Joints in Tally	OD (in)	ID (in)	Wt (lb/ft)	Grade	Len (ft)	Qty	Top (ftKB)	Btm (ftKB)	Top (TVD) (ftKB)	Btm (TVD) (ftKB)	
Casing Joints	0	13 3/8	12.715	48.00	H-40	413.00		13.0	426.0			
Casing String: Intermediate 8 5/8" Set Depth: 4,670.0												
Casing Description Intermediate		Run Date 12/27/1958 00:00		OD (in) 8 5/8	OD Nom M... 8 5/8	ID (in)	ID Nom Mi...	Wt/Len (lb/ft)	String Grade	Length (ft) 4,657.00	Top (ftKB) 13.0	Set Depth...
Item Des	Joints in Tally	OD (in)	ID (in)	Wt (lb/ft)	Grade	Len (ft)	Qty	Top (ftKB)	Btm (ftKB)	Top (TVD) (ftKB)	Btm (TVD) (ftKB)	
Casing Joints	0	8 5/8				4,657.00		13.0	4,670.0			
Casing String: Production 5 1/2" Set Depth: 11,416.0												
Casing Description Production		Run Date 2/15/1959 00:00		OD (in) 5 1/2	OD Nom M... 5 1/2	ID (in) 4.89	ID Nom Mi... 4.892	Wt/Len (lb/ft) 17.00	String Grade J-55	Length (ft) 11,403.0 0	Top (ftKB) 13.0	Set Depth...
Item Des	Joints in Tally	OD (in)	ID (in)	Wt (lb/ft)	Grade	Len (ft)	Qty	Top (ftKB)	Btm (ftKB)	Top (TVD) (ftKB)	Btm (TVD) (ftKB)	
Casing Joints	0	5 1/2	4.892	17.00	J-55	11,403.00		13.0	11,416.0			
Cement												
Surface Casing Cement												
Cementing Start Date 12/12/1958 00:00				Cementing End Date				String Surface, 426.0ftKB				
Stg #	Pump Start Date			Pump End Date			Top (ftKB)		Btm (ftKB)		Top (TVD) (ftKB)	
	12/12/1958						135.0		427.0			
							13.0		135.0			
Intermediate Casing Cement												
Cementing Start Date 12/27/1958 00:00				Cementing End Date				String Intermediate, 4,670.0ftKB				
Stg #	Pump Start Date			Pump End Date			Top (ftKB)		Btm (ftKB)		Top (TVD) (ftKB)	
	12/27/1958						200.0		4,670.0			
Production Casing Cement												
Cementing Start Date 2/15/1959 00:00				Cementing End Date				String Production, 11,416.0ftKB				
Stg #	Pump Start Date			Pump End Date			Top (ftKB)		Btm (ftKB)		Top (TVD) (ftKB)	
	2/15/1959						8,985.0		11,417.0			
Remedial Cement Squeeze												
Cementing Start Date 1/16/1965 00:00				Cementing End Date				String				
Stg #	Pump Start Date			Pump End Date			Top (ftKB)		Btm (ftKB)		Top (TVD) (ftKB)	
	1/16/1965						6,400.0		6,475.0			
Remedial Cement Squeeze												
Cementing Start Date 3/3/1983 00:00				Cementing End Date				String				
Stg #	Pump Start Date			Pump End Date			Top (ftKB)		Btm (ftKB)		Top (TVD) (ftKB)	
	1/16/1965						4,793.0		5,850.0			
Remedial Cement Squeeze												
Cementing Start Date 5/16/1992 00:00				Cementing End Date				String				
Stg #	Pump Start Date			Pump End Date			Top (ftKB)		Btm (ftKB)		Top (TVD) (ftKB)	
	1/16/1965						10,490.0		10,724.0			
Remedial Cement Squeeze												
Cementing Start Date 6/29/1995 00:00				Cementing End Date				String				
Stg #	Pump Start Date			Pump End Date			Top (ftKB)		Btm (ftKB)		Top (TVD) (ftKB)	
	1/16/1965						4,344.0		4,838.0			
Tubing Strings												
Set Depth: 4,375.0												
Run Job		String		String Ma... 2 3/8	OD Nom... 4.56	ID (in) 2.00	ID Nom M... 1.78	Wt (lb/ft)	String Grade J-55	Top (ftKB) 13.0	Set Depth... 4,362.0 0	Len (ft)
Item Des		Len (ft)	OD (in)	ID (in)	Wt (lb/ft)	Grade	Tally Jts Run	Tally Len (ft)	Top (ftKB)	Btm (ftKB)	Top (TVD) (ftKB)	Btm (TVD) (ftKB)
Tubing		4,335.0 0	2 3/8	2.00		J-55	0		13.0	4,348.0		
Anchor 5 1/ X 2 3/8		4.00	4.56	2.00			0		4,348.0	4,352.0		
Tubing		22.00	2 3/8	2.00		J-55	0		4,352.0	4,374.0		
Pump Seating Nipple		1.00	2 3/8	1.78			0		4,374.0	4,375.0		
Rod Strings												
Set Depth: 4,375.0												
Rod Description Rod		Set De... 4,375.0	Run Date 6/10/2002	Run Job		OD (in) 7/8	Wt (lb/ft)	String Gr...	Top (ft... 7.0	Set De...	Set De...	String Components Rod Insert Pump, Sucker Rod, PONY Rod, PONY Rod, Polished Rod
Length (ft) 22.00		OD Nominal (in) 1 1/4		Quantity 1	ID (in)	Weight/Length (lb/ft)		Grade		Top Depth (ftKB) 7.0		Bottom Depth (ftKB) 29.0
Length (ft) 4.00		OD Nominal (in) 7/8		Quantity 1	ID (in)	Weight/Length (lb/ft)		Grade		Top Depth (ftKB) 29.0		Bottom Depth (ftKB) 33.0
Length (ft) 6.00		OD Nominal (in) 7/8		Quantity 3	ID (in)	Weight/Length (lb/ft)		Grade		Top Depth (ftKB) 33.0		Bottom Depth (ftKB) 39.0
Length (ft) 4,320.00		OD Nominal (in) 7/8		Quantity 182	ID (in)	Weight/Length (lb/ft)		Grade		Top Depth (ftKB) 39.0		Bottom Depth (ftKB) 4,359.0
Length (ft) 16.00		OD Nominal (in) 1 1/4		Quantity 1	ID (in)	Weight/Length (lb/ft)		Grade		Top Depth (ftKB) 4,359.0		Bottom Depth (ftKB) 4,375.0
Perforations												
Date		Top (ftKB)		Btm (ftKB)		Top (TVD) (ftKB)		Btm (TVD) (ftKB)		Shot Dens (shots/ft)		Calculated Shot Total
3/6/2001 00:00		4375		4606						2.0		463
3/24/1972 00:00		10618		10624						6.0		37
3/24/1972 00:00		10698		10706						8.0		65
3/24/1972 00:00		10752		10760						8.0		65
3/24/1972 00:00		10832		10838						6.0		37
3/24/1972 00:00		10842		10848						6.0		37
3/24/1972 00:00		10864		10872						8.0		65
3/24/1972 00:00		10880		10888						8.0		65
1/27/1983 00:00		11248		11250						2.0		5
1/27/1983 00:00		11256		11271						2.0		31
2/23/1959 00:00		11287		11307						4.0		81



LEAMEX 07  
Wellbore Diagram

Well Header				
API # 3002501516		State NEW MEXICO		County LEA
Division PERMIAN		Business Unit MAVERICK PERMIAN		Region RG_SE_NEW_MEXICO
			Area A_GEMSTONE_CAPROCK	Total Depth (ftKB) 11,417.0

Deviation Surveys												
Date				Description					Job			
Survey Data												
MD (ftKB)	Incl (°)	Azm (°)	Method	TVD (ftKB)	VS (ft)	Depart (ft)	NS (ft)	EW (ft)	DLS (°/100ft)	Build (°/100ft)	Turn (°/100ft)	Unwrap Displace (ft)





**State of New Mexico**  
**Energy, Minerals and Natural Resources Department**  
**Oil Conservation Division**  
**Standard Plugging Conditions**



This document provides OCD's general plugging conditions of approval. It should be noted that the list below may not cover special plugging programs in unique and unusual cases, and OCD expressly reserves the right to impose additional requirements to the extent dictated by project conditions. The OCD also reserves the right to approve deviations from the below conditions if field conditions warrant a change. A C-103F NOI to P&A must be approved prior to plugging operations. Failure to comply with the conditions attached to a plugging approval may result in a violation of 19.15.5.11 NMAC, which may result in enforcement actions, including but not limited to penalties and a requirement that the well be re-plugged as necessary.

1. Notify OCD office at least 24 hours before beginning work and seek prior approval to implementing any changes to the C-103 NOI to PA.
  - North Contact, Monica Kuehling, 505-320-0243, [monica.kuehling@emnrd.nm.gov](mailto:monica.kuehling@emnrd.nm.gov)
  - South Contact, Gilbert Cordero, 575-626-0830, [gilbert.cordero@emnrd.nm.gov](mailto:gilbert.cordero@emnrd.nm.gov)
2. A Cement Bond Log is required to ensure strata isolation of producing formations, protection of water and correlative rights. A CBL must be run or be on file that can be used to properly evaluate the cement behind the casing.

Note: Logs must be submitted to OCD via OCD permitting. A copy of the log may be emailed to OCD inspector for faster review times, but emailing does not relieve the operators obligation to submit through OCD permitting.

3. Once Plugging operations have commenced, the rig must not rig down until the well is fully plugged without OCD approval. If gap in plugging operations exceeds 30 days, the Operator must file a subsequent sundry of work performed and revised NOI for approval on work remaining. At no time shall the rig be removed from location if it will result in waste or contamination of fresh water.
4. Insure all bradenheads have been exposed, identified and valves are operational prior to rig up.
5. Fluids must be placed between all cement plugs mixed at 25 sacks per 100 bbls of water.
  - North, water or mud laden fluids
  - South, mud laden fluids
6. Closed loop system is to be used for entire plugging operation. Upon completion, contents of steel pits are to be hauled to an OCD permitted disposal facility.
7. Class of cement shall be used in accordance with the below table for depth allowed.

Class	TVD Lower Limit (feet)
Class A/B	6,000
Class I/II	6,000
Class C or III	6,000
Class G and H	8,000
Class D	10,000

Class E	14,000
Class F	16,000

8. After cutting the well head any "top off cement jobs" must remain static for 30 minutes. Any gas bubbles or flow during this 30 minutes shall be reported to the OCD for approval of next steps.
9. Trucking companies being used to haul oilfield waste fluids (Commercial or Private) to a disposal facility shall have an approved OCD C-133 permit.
  - A copy of this permit shall be available in each truck used to haul waste products.
  - It is the responsibility of the Operator and Contractor to verify that this permit is in place prior to performing work.
  - Drivers shall be able to produce a copy upon request of an OCD Compliance Officer.
10. Filing a [C-103] Sub. Plugging (C-103P) will serve as notification that the well has been plugged.
11. A [C-103] Sub. Release After P&A (C-103Q) shall be filed no later than a year after plugging and a site inspection by OCD Compliance officer to determine if the location is satisfactorily cleaned, all equipment, electric poles and trash has been removed to meet OCD standards before bonding can be released.
12. Produced water or brine-based fluids **may not** be used during any part of plugging operations without **prior OCD approval**.
13. Cementing;
  - All cement plugs will be neat cement and a minimum of 100' in length. 50' of calculated cement excess required for inside casing plugs and 100% calculated cement excess required on outside casing plugs.
  - If cement does not exist between or behind the casing strings at recommended formation depths, the casing perforations will be shot at 50' below the formation top and the cement retainer shall be set no more than 50' from the perforations.
  - WOC (Wait on Cement) time will be:
    - 4 hours for accelerated (calcium chloride) cement.
    - 6 hours on regular cement.
  - Operator must tag all cement plugs unless it meets the below condition.
    - The operator has a passing pressure test for the casing annulus and the plug is only an inside plug.
  - If perforations are made operator must tag all plugs using the work string to tag unless given approval to tag with wireline by the correct contact from COA #1 of this document.
    - This includes plugs pumped underneath a cement retainer to ensure retainer seats properly after cement is pumped.
  - Cement can only be bull-headed with specific prior approval.
  - Squeeze pressures are not to exceed the exposed formations frac gradient or the burst pressure of the casing.
14. A cement plug is required to be set from 50' below to 50' above (straddling) formation tops, casing shoes, casing stubs, any attempted casing cut offs, anywhere the casing is perforated, DV tools.
  - Perforation/Formation top plug. (When there is less than 100ft between the top perforation to the formation top.) These plugs are required to be started no greater than

50ft from the top perforation. However, the plug should be set below the formation top or as close to the formation top as possible for the maximum isolation between the formations. The plug is required to be a 100ft cement plug plus excess.

- Perforation Plug when a formation top is not included. These plugs are required to be started within 50ft of the top perforation. The plug is required to be a 100ft cement plug plus excess.
- Cement caps on top of bridge plugs or cement retainers for perforation plugs, that are not straddling a formation top, may be set using a bailer with a minimum of 35' of cement in lieu of the 100' plug. The bridge plug or retainer must be set within 50ft of the perforations.
- Perforations are required below the surface casing shoe if cement does not exist behind the casing, a 30-minute minimum wait time will be required immediately after perforating to determine if gas and/or water flows are present. If flow is present, the well will be shut-in for a minimum of one hour and the pressure recorded. If gas is detected contact the OCD office for directions.

15. No more than 3000 feet is allowed between cement plugs in cased hole and no more than 2000 feet is allowed in open hole.

16. Formation Tops to be isolated with cement plugs, but not limited to are:

- Northwest See Figure A
- South (Artesia) See Figure B
- Potash See Figure C
  - In the R-111-P (Or as subsequently revised) Area a solid cement plug must be set across the salt section. Fluid used to mix the cement shall be saturated with the salts that are common to the section penetrated and in suitable proportions, not more than 3% calcium chloride (by weight of cement) will be considered the desired mixture whenever possible, woe 4 hours and tag, this plug will be 50' below the bottom and 50' above the top of the Formation.
- South (Hobbs) See Figure D1 and D2
- Areas not provided above will need to be reviewed with the OCD on a case by case basis.

17. Markers

- Dry hole marker requirements 19.15.25.10.  
The operator shall mark the exact location of plugged and abandoned wells with a steel marker not less than four inches in diameter set in cement and extending at least four feet above mean ground level. The marker must include the below information:
  1. Operator name
  2. Lease name and well number
  3. API number
  4. Unit letter
  5. Section, Township and Range
- AGRICULTURE (Below grade markers)  
In Agricultural areas a request can be made for a below ground marker. For a below ground marker the operator must file their request on a C-103 notice of intent, and it must include the following;
  - A) Aerial photo showing the agricultural area
  - B) Request from the landowner for the below ground marker.



C) Subsequent plugging report for a well using a below ground marker must have an updated C-102 signed by a certified surveyor for SHL.

Note: A below ground marker is required with all pertinent information mentioned above on a plate, set 3' below ground level, a picture of the plate will be supplied to OCD for record, the exact location of the marker (longitude and latitude by GPS) will be provided to OCD. OCD requires a current survey to verify the location of the below ground marker, however OCD will accept a GPS coordinate that were taken with a GPS that has an accuracy of within 15 feet.

18. If work has not commenced within 1 year of the approval of this procedure, the approval is automatically expired. After 1 year a new [C-103] NOI Plugging (C-103F) must be submitted and approved prior to work.

Figure A

North Formations to be isolated with cement plugs are:

- San Jose
- Nacimiento
- Ojo Alamo
- Kirtland
- Fruitland
- Picture Cliffs
- Chacra (if below the Chacra Line)
- Mesa Verde Group
- Mancos
- Gallup
- Basin Dakota (plugged at the top of the Graneros)
- Deeper formations will be reviewed on a case-by-case basis

Figure B

South (Artesia) Formations to be isolated with cement plugs are:

- Fusselman
- Montoya
- Devonian
- Morrow
- Strawn
- Atoka
- Permo-Penn
- Wolfcamp
- Bone Springs
- Delaware , in certain areas where the Delaware is subdivided into;
  - 1. Bell Canyon
  - 2. Cherry Canyon
  - 3. Brushy Canyon
- Any salt sections
- Abo
- Yeso
- Glorieta
- San Andres
- Greyburg
- Queen
- Yates

## Figure C

## Potash Area R-111-P

## T 18S – R 30E

Sec 10 Unit P. Sec 11 Unit M,N. Sec 13 Unit L,M,N. Sec 14 Unit C -P. Sec 15 Unit A G,H,I,J,K,N,O,P. Sec 22 Unit All  
except for M. Sec 23, Sec 24 Unit C,D,E,L, Sec 26 Unit A-G, Sec 27 Unit A,B,C

## T 19S – R 29E

Sec 11 Unit P. Sec 12 Unit H-P. Sec 13. Sec 14 Unit A,B,F-P. Sec 15 Unit P. Sec 22 Unit A,B,C,F,G,H,I,J K,N,O,P. Sec 23.  
Sec 24. Sec 25 Unit D. Sec 26 Unit A- F. Sec 27 Unit A,B,C,F,G,H.

## T 19S – R 30E

Sec 2 Unit K,L,M,N. Sec 3 Unit I,L,M,N,O,P. Sec 4 Unit C,D,E,F,G,I-P. Sec 5 Unit A,B,C,E-P. Sec 6 Unit I,O,P. Sec 7 – Sec  
10. Sec 11 Unit D, G—P. Sec 12 Unit A,B,E-P. Sec 13 Unit A-O. Sec 14-Sec 18. Sec 19 Unit A-L, P. Sec 20 – Sec 23. Sec  
24 Unit C,D,E,F,L,M,N. Sec 25 Unit D. Sec 26 Unit A-G, I-P. Sec 27, Sec 28, Sec 29 Unit A,B,C,D,F,G,H,I,J,O,P. Sec 32  
Unit A,B,G,H,I,J,N,O,P. Sec 33. Sec 34. Sec 35. Sec 36 Unit D,E,F,I-P.

## T 19S – R 31E

Sec 7 Unit C,D,E,F,L. Sec 18 Unit C,D,E,F,G,K,L. Sec 31 Unit M. Sec 34 Unit P. Sec 35 Unit M,N,O. Sec 36 Unit O,P.

## T 20S – R 29E

Sec 1 Unit H,I,P. Sec 13 Unit E,L,M,N. Sec 14 Unit B-P. Sec 15 Unit A,H,I,J,N,O,P. Sec 22 Unit A,B,C,F,G,H,I,J,O,P. Sec  
23. Sec 24 Unit C,D,E,F,G,J-P. Sec 25 Unit A-O. Sec 26. Sec 27 Unit A,B,G,H,I,J,O,P. Sec 34 Unit A,B,G,H. Sec 35 Unit  
A-H. Sec 36 Unit B-G.

## T 20S – R 30E

Sec 1 – Sec 4. Sec 5 Unit A,B,C,E-P. Sec 6 Unit E,G-P. Sec 7 Unit A-H,I,J,O,P. Sec 8 – 17. Sec 18 Unit A,B,G,H,I,J,O,P.  
Sec 19 Unit A,B,G,H,I,J,O,P. Sec 20 – 29. Sec 30 Unit A-L,N,O,P. Sec 31 Unit A,B,G,H,I,P. Sec 32 – Sec 36.

## T 20S – R 31E

Sec 1 Unit A,B,C,E-P. Sec 2. Sec 3 Unit A,B,G,H,I,J,O,P. Sec 6 Unit D,E,F,J-P. Sec 7. Sec 8 Unit E-P. Sec 9 Unit E,F,J-P.  
Sec 10 Unit A,B,G-P. Sec 11 – Sec 36.

## T 21S – R 29E

Sec 1 – Sec 3. Sec 4 Unit L1 – L16,I,J,K,O,P. Sec 5 Unit L1. Sec 10 Unit A,B,H,P. Sec 11 – Sec 14. Sec 15 Unit A,H,I. Sec  
23 Unit A,B. Sec 24 Unit A,B,C,D,F,G,H,I,J,O,P. Sec 25 Unit A,O,P. Sec 35 Unit G,H,I,J,K,N,O,P. Sec 36 A,B,C,F – P.

## T 21S – R 30E

Sec 1 – Sec 36

## T 21S – R 31E

Sec 1 – Sec 36

T 22S – R 28E

Sec 36 Unit A,H,I,P.

T 22S – R 29E

Sec 1. Sec2. Sec 3 Unit I,J,N,O,P. Sec 9 Unit G – P. Sec 10 – Sec 16. Sec 19 Unit H,I,J. Sec 20 – Sec 28. Sec 29 Unit

A,B,C,D,G,H,I,J,O,P. Sec 30 Unit A. Section 31 Unit C – P. Sec 32 – Sec 36

T 22S – R 30E

Sec 1 – Sec 36

T 22S – R 31E

Sec 1 – Sec 11. Sec 12 Unit B,C,D,E,F,L. Sec 13 Unit E,F,K,L,M,N. Sec 14 – Sec 23. Sec 24 Unit C,D,E,F,K,L,M,N. Sec 25

Unit A,B,C,D. Sec 26 Unit A,BC,D,G,H. Sec 27 – Sec 34.

T 23S – R 28E

Sec 1 Unit A

T 23S – R 29E

Sec 1 – Sec 5. Sec 6 Unit A – I, N,O,P. Sec 7 Unit A,B,C,G,H,I,P. Sec 8 Unit A – L, N,O,P. Sec 9 – Sec 16. Sec 17 Unit

A,B,G,H,I,P. Sec 21 – Sec 23. Sec 24 Unit A – N. Sec 25 Unit D,E,L. Sec 26. Sec 27. Sec 28 Unit A – J, N,O,P. Sec 33

Unit A,B,C. Sec 34 Unit A,B,C,D,F,G,H. Sec 35. Sec 36 Unit B,C,D,E,F,G,K,L.

T 23S – R 30E

Sec 1 – Sec 18. Sec 19 Unit A – I,N,O,P. Sec 20, Sec 21. Sec 22 Unit A – N, P. Sec 23, Sec 24, Sec 25. Sec 26 Unit

A,B,F-P. Sec 27 Unit C,D,E,I,N,O,P. Sec 28 Unit A – H, K,L,M,N. Sec 29 Unit A – J, O,P. Sec 30 Unit A,B. Sec 32 A,B. Sec

33 Unit C,D,H,I,O,P. Sec 34, Sec 35, Sec 36.

T 23S – R 31E

Sec 2 Unit D,E,J,O. Sec 3 – Sec 7. Sec 8 Unit A – G, K – N. Sec 9 Unit A,B,C,D. Sec 10 Unit D,P. Sec 11 Unit G,H,I,J,M,N,O,P. Sec 12 Unit E,L,K,M,N. Sec 13 Unit C,D,E,F,G,J,K,L,M,N,O. Sec 14. Sec 15 Unit A,B,E – P. Sec 16 Unit

I, K – P. Sec 17 Unit B,C,D,E, I – P. Sec 18 – Sec 23. Sec 24 Unit B – G, K,L,M,N. Sec 25 Unit B – G, J,K,L. Sec 26 – Sec

34. Sec 35 Unit C,D,E.

T 24S – R 29E

Sec 2 Unit A, B, C, D. Sec 3 Unit A

T 24S – R 30E

Sec 1 Unit A – H, J – N. Sec 2, Sec 3. Sec 4 Unit A,B,F – K, M,N,O,P. Sec 9 Unit A – L. Sec 10 Unit A – L, O,P. Sec 11.

Sec 12 Unit D,E,L. Sec 14 Unit B – G. Sec 15 Unit A,B,G,H.

T 24S – R 31E

Sec 3 Unit B – G, J – O. Sec 4. Sec 5 Unit A – L, P. Sec 6 Unit A – L. Sec 9 Unit A – J, O, P. Sec 10 Unit B – G, K – N. Sec

35 Unit E – P. Sec 36 Unit E, K, L, M, N.

T 25S – R 31E

Sec 1 Unit C, D, E, F. Sec 2 Unit A – H.

Figure D1 and D2

South (Hobbs) Formations to be isolated with cement plugs are:

The plugging requirements in the Hobbs Area are based on the well location within specific areas of the Area (See Figure D1). The Formations in the Hobbs Area to be isolated with cement plugs are (see Figure D2)

Figure D1 Map

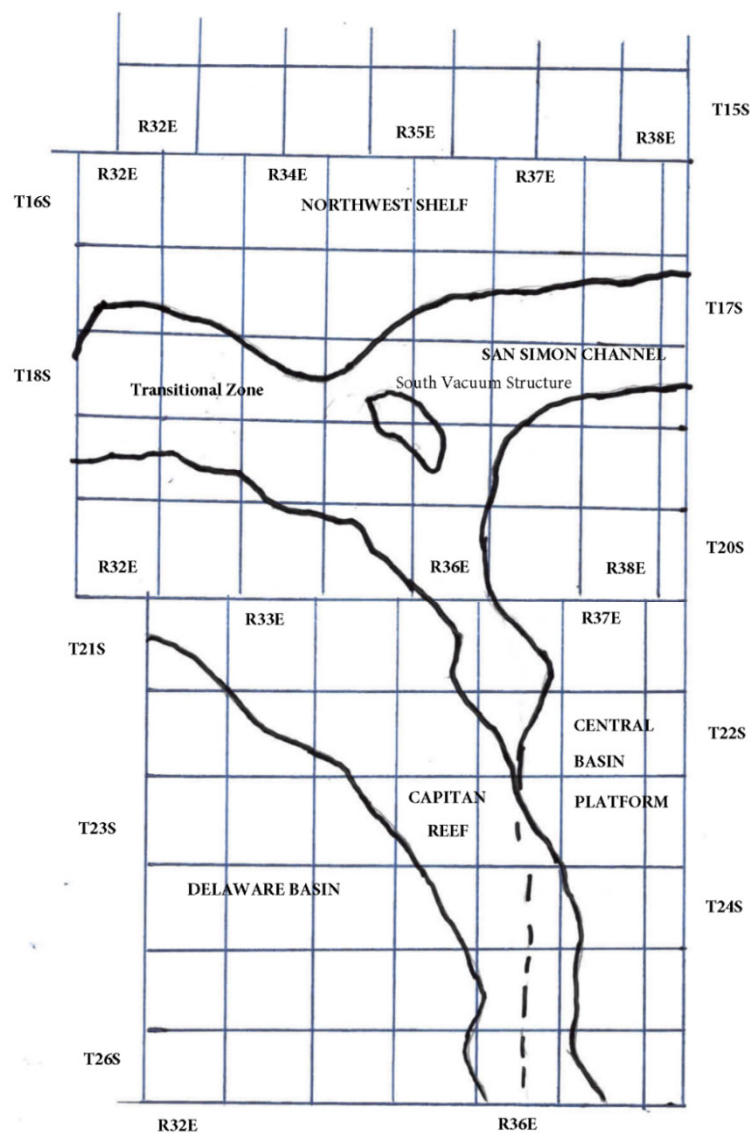




Figure D2 Formation Table

100' Plug to isolate upper and lower fresh water zones (typically 250' to 350')						
Northwest Shelf	Captan Reef Area	Transition Zone	San Simon Channel	South Vacuum Structure	Delaware Basin	Central Basin Platform
Granit Wash (Detrital basement material and fractured pre-Cambrian basement rock)	Siluro-Devonian	Morrow	Siluro-Devonian	Ellenburger	Siluro-Devonian	Granit Wash (Detrital basement material, fractured pre-Cambrian basement rock and fracture Mafic Volcanic intrusives).
Montoya	Mississippian	Atoka	Morrow	McKee	Morrow	Ellenburger
Fusselman	Morrow	Strawn	Wolfcamp	Siluro-Devonian	Atoka	Connell
Woodford	Atoka	Cisco	Abo Reef	Woodford	Strawn	Waddell
Siluro-Devonian	Strawn	Pennsylvanian	Bone Spring	Mississippian	Pennsylvanian	McKee
Chester	Pennsylvanian	Wolfcamp	Delaware	Barnett Shale	Lower Wolfcamp	Simpson Group
Austin	Wolfcamp	Bone Spring	San Andres	Morrow	Upper Wolfcamp	Montoya
Mississippian	Abo Reef, if present	Delaware	Queen	Atoka	Wolfcamp	Fusselman
Morrow	Abo, if present	San Andres	Yates	Strawn	Third Bone Spring Sand (Top of Wolfbone)	Silurian
Atoka	Queen, if present	Grayburg-San Andres	Base of Salt	Canyon	First Bone Spring Sand (Top of Lower Bone Spring)	Devonian
Lower Pennsylvanian	Bone Spring	Queen	Rustler	Pennsylvanian	Bone Spring	Strawn
Cisco-Canyon	Delaware	Seven Rivers		Blinbry	Brushy Canyon	Pennsylvanian
Pennsylvanian	Base Capitan Reef	Yates		Bone Spring	Delaware (Base of Salt)	Wolfcamp
Bough	Seven Rivers	Base of Salt		San Andres	Rustler	Abo
Wolfcamp	Yates	Rustler		Queen		Abo Reef
Abo	Top Capitan Reef			Base of Salt		Drinkard
Abo Reef, if present	Base of Salt			Rustler		Tubb
Yeso (Township 15 South to Township 17 South)	Rustler					Blinbry
Drinkard or Lower Yeso (Township 15 South to Township 17 South)						Paddock
Tubb (Township 15 South to Township 17 South)						Glorieta
Blinbry (Township 15 South to Township 17 South)						San Andres
Paddock (Township 15 South to Township 17 South)						Grayburg
Glorieta						Grayburg-San Andres
San Andres						Queen
Queen (Township 15 South to Township 17 South)						Seven Rivers
Seven Rivers (Township 15 South to Township 17 South)						Yates
Yates (Township 15 South to Township 17 South)						Base of Salt
Base of Salt						Rustler
Rustler						

**District I**  
1625 N. French Dr., Hobbs, NM 88240  
Phone:(575) 393-6161 Fax:(575) 393-0720  
**District II**  
811 S. First St., Artesia, NM 88210  
Phone:(575) 748-1283 Fax:(575) 748-9720  
**District III**  
1000 Rio Brazos Rd., Aztec, NM 87410  
Phone:(505) 334-6178 Fax:(505) 334-6170  
**District IV**  
1220 S. St Francis Dr., Santa Fe, NM 87505  
Phone:(505) 476-3470 Fax:(505) 476-3462

**State of New Mexico**  
**Energy, Minerals and Natural Resources**  
**Oil Conservation Division**  
**1220 S. St Francis Dr.**  
**Santa Fe, NM 87505**

CONDITIONS  
  
Action 367274

CONDITIONS

Operator: Maverick Permian LLC 1000 Main Street, Suite 2900 Houston, TX 77002	OGRID: 331199
	Action Number: 367274
	Action Type: [C-103] NOI Plug & Abandon (C-103F)

CONDITIONS

Created By	Condition	Condition Date
kfortner	See attached COA Run CBL	7/25/2024