

Office
 District I – (575) 393-6161
 1625 N. French Dr., Hobbs, NM 88240
 District II – (575) 748-1283
 811 S. First St., Artesia, NM 88210
 District III – (505) 334-6178
 1000 Rio Brazos Rd., Aztec, NM 87410
 District IV – (505) 476-3460
 1220 S. St. Francis Dr., Santa Fe, NM
 87505

State of New Mexico
 Energy, Minerals and Natural Resources

Form C-103
 Revised July 18, 2013

OIL CONSERVATION DIVISION
 1220 South St. Francis Dr.
 Santa Fe, NM 87505

WELL API NO. 30-015-33644
5. Indicate Type of Lease STATE <input type="checkbox"/> FEE <input checked="" type="checkbox"/>
6. State Oil & Gas Lease No.
7. Lease Name or Unit Agreement Name Grizzly Fee
8. Well Number #001
9. OGRID Number 372098
10. Pool name or Wildcat Dublin Ranch Morrow
4. Well Location Unit Letter <u>I</u> : <u>1475</u> feet from the <u>FSL</u> line and <u>660</u> feet from the <u>FEL</u> line Section <u>32</u> Township <u>22S</u> Range <u>28E</u> NMPM County <u>Eddy</u>
11. Elevation (Show whether DR, RKB, RT, GR, etc.) 3032 GL

12. Check Appropriate Box to Indicate Nature of Notice, Report or Other Data

NOTICE OF INTENTION TO:

PERFORM REMEDIAL WORK ☐ PLUG AND ABANDON ☐
 TEMPORARILY ABANDON ☐ CHANGE PLANS ☐
 PULL OR ALTER CASING ☐ MULTIPLE COMPL ☐
 DOWNHOLE COMMINGLE ☐
 CLOSED-LOOP SYSTEM ☐
 OTHER: ☐

SUBSEQUENT REPORT OF:

REMEDIAL WORK ☐ ALTERING CASING ☐
 COMMENCE DRILLING OPNS. ☐ P AND A ☒
 CASING/CEMENT JOB ☐ PNR
 OTHER: ☐

13. Describe proposed or completed operations. (Clearly state all pertinent details, and give pertinent dates, including estimated date of starting any proposed work). SEE RULE 19.15.7.14 NMAC. For Multiple Completions: Attach wellbore diagram of proposed completion or recompletion.

Please see attached.

CBL is on file

PA completed 4/9/24

Spud Date:

10/12/2004

Rig Release Date:

I hereby certify that the information above is true and complete to the best of my knowledge and belief.

SIGNATURE Adrian Covarrubias TITLE Adv. Regulatory Compliance Rep. DATE 5/12/2024

Type or print name Adrian Covarrubias E-mail address: acovarrubias@marathonoil.com PHONE: 713-296-3368

For State Use Only

APPROVED BY: Kerry Fortner TITLE Compliance Officer A DATE 8/13/24

Conditions of Approval (if any):

Cut tubing at 12079 Set CIBP @ 12070 did not set

Set CIBP @ 12,028 set 30 sxs cement plug, class H 16.8 ppg, yield 1.09 tagged top of cement with work string at 11,456'

Set balanced plug 9480-9255 6.6 bbls. Pressure tested to 500 psi. Good test. Tagged at 9255 with wireline.

Perforate 6155' unable to inject. Set balanced plug 6225-5960 25 sxs. class C 1.32 yield Tagged with pipe.

Set balanced plug 5905-5584. 25 sxs class C 1.32 yield

Perforated 3330', unable to inject Set balanced plug 3381-3124 25 sxs Tagged with wireline (later drilled out.)

Perforated 2570 Unable to inject. 2620-2390 Balanced plug 30 sxs class C 1.32 yield tag wireline

Perforated 373 cement with 120 sxs 28.9 bbls 14.8 ppg 1.32 yield full returns circulated to surface.

Saw gas leaking up 5-1/2 x 9/5.8 annulus. 120 psi 100% LEL.

Drilled out cement plug in 75' perforate at 60' squeeze 30 sxs 7 bbls 14.8 ppg circulate to surface.

Drilled out cement plug in 5-1/2 casing to 95' set CIBP at 80' ELM good pressure test 500 psi for 30 min. Set CIBP at 45' Good pressure test 500 psi for 30 min. Still see gas on annulus. Spot 5.5 bbls on top of plug pressure up to 400 psi. Still see LEL. Rig down Workover rig.

Bring in new rig. Drilled out cement plug to 2300'.

Perforate at 2,000' and 1,800' 4 holes each. Tally off set retainer high. Set Cement retainer 1325 unable to inject. Drill out cement retainer.

Perforate at 1,345 and 1,125 set cement retainer at 1,187' pump circulation squeeze "suicide squeeze" cement circulated 55 sxs cement thru retainer up casing.

Perforate at 890 and 420 4 holes each. Set Cement retainer @ 511'. Circulation "Suicide squeeze" 160 BBLS Cement 34 bbls Class C 1.32 yield.

Perforate 419' set balanced plug with 25 sxs 5.3 BBLS 14.8 PPG. Squeeze 1BBL at 700 psi.

Perforate 370' Cement 343-390 plug 25 sxs 5.8 bbls 14.8 PPG Class C 1.32 yeild. Could not inject. 9-5/8" annulus 100% LEL.

Section mill 5-1/2" casing at 211-216, perforate @ 206. Cement plug from 310-50' pump 3 bbls 20 sxs Class C 1.32 yield. Pressure up to squeeze sectioned casing. Unable to inject.

Drilled out to 2256'. Log with Acoustic log from 2251- surface. Determine leak into annulus deeper than 2251'.

Set CICR. Circulation "Suicide Squeeze" 13.6 BBLS Halliburton Well lock resin from perms at 2000-1800'. Tag at 1757'

Balanced plug 1345-1085 3.22 BBLS 25 SXS 1.32 yield Class C tagged with pipe.

Balanced plug 861-750 20 sxs 4.7 bbls 14.8 PPG class C cement. Tagged at 750 with pipe.

Balanced plug 600-410 25 sxs 5.8 BBLS 14.8 PPG Class C Tag 410 with pipe

Balanced plug 388-191 5.8 BBLS 14.8 PPG Class C Tag 410 with pipe

Balanced plug 171-surface 20 sxs 4.7 BBL 14.8 PPG. .

No gas up annulus, seeing gas up 5-1/2' 100% LEL. 100 psi SI pressure up casing.

Contact NMOCD. Drilled out to 223' below casing window. Pumped Halliburton Well loc resin from 223' to surface attempt to squeeze. 1BBL resin. Resin Did not cure. Contaminated from window.

Drill out to 245' Place 10 SXS Class C from 245-95'

Set CIBP @ 93 and spotted Halliburton welloc resin from 95' to surface

Overnight build up. 9% LEL on 5-1/2" Casing and 20 psi 30 % LEL on 9-5/8".

Note: final drill out. All plugs below are still in the well.

Drill out to 9329' Circulate 66 BBLS Brine Based Mud 12.6 PPG.

Set CIBP @ 6420'. Perforated 6274-6284 2SPF. 6180-6170' Confirmed with NMOCD we can cover both sets with one squeeze. Set Packer at 5867' Established injection. Squeeze perfs with 24.8 BBLS 12.5 PPG lead followed by 50 bbls 14.2 PPG cement 1.66 yield. Hesitate and build 1500 psi over 30 minutes. 0 psi on 9-5/8" annulus 0 psi on 5-1/2" casing. 0 psi on surface casing. Tag with pipe 5769'. Cement Plug from 6284-5769'

RDMO Rig. Monitor casing for build up. 120 psi on 5-1/2 and 120 on 9-5/8 after 46 days.

Log well with TGT Noise log and CBL. Determine leak points into 9-5/8" annulus at 4000 and 2100' into annulus.

Set CIBP at 3740'

Perforate 3617-3640 and 3500-3510 set retainer @ 3542 . Circulation "Suicide squeeze" 100 SXS Class C 14.8 ppg 1.33 yield 24 bbls sting out leaving 2 BBLS ontop of retainer. Tag 3456 WLM.

Contact NMOCD. Perform bubble test 9-5/8' did not pass. Continue with P&A operations.

Set Bridge Plug 2530' Perforate 2462-2472 unable to inject. Set Balanced plug 16 sxs 4.76 bbls Class C 1.66 yield Tag 2302 WLM.

Perf 2204 and 2020' set cement retainer at 2056' Circulation "Suicide squeeze" " Squeeze 90 sxs 14.8ppg 1.33 yield. Sting out leaving Tag TOC 1678 WLM.

Monitor for pressure and LEL. 0 PSI. 0 % LEL for 48 hours.

Contact NMOCD. Set Balanced Plug from 594 to surface 60 sxs 14bbls 14.8 PPG cmt

Cut and cap wellhead.

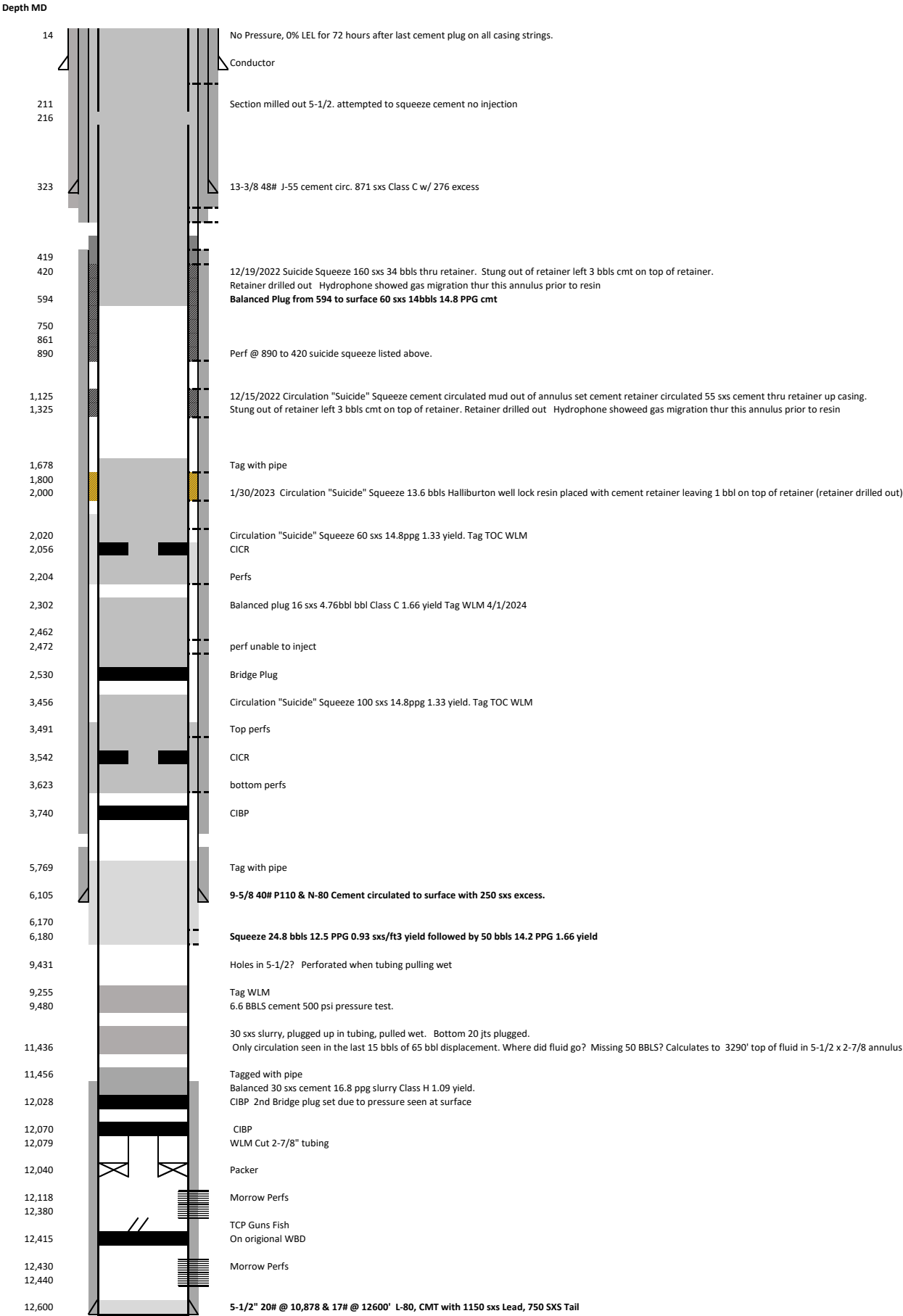


Well Name Grizzly 1H
Location Eddy County, NM
Section Township Range
Elevation
Spud Date

WBD Drawn I Cameron Clar

4/15,

Current status Bubbling up 5-1/2" and building up to 20 psi on 9-5/8"



District I
1625 N. French Dr., Hobbs, NM 88240
Phone:(575) 393-6161 Fax:(575) 393-0720
District II
811 S. First St., Artesia, NM 88210
Phone:(575) 748-1283 Fax:(575) 748-9720
District III
1000 Rio Brazos Rd., Aztec, NM 87410
Phone:(505) 334-6178 Fax:(505) 334-6170
District IV
1220 S. St Francis Dr., Santa Fe, NM 87505
Phone:(505) 476-3470 Fax:(505) 476-3462

State of New Mexico
Energy, Minerals and Natural Resources
Oil Conservation Division
1220 S. St Francis Dr.
Santa Fe, NM 87505

CONDITIONS

Action 350457

CONDITIONS

Operator: MARATHON OIL PERMIAN LLC 990 Town & Country Blvd. Houston, TX 77024	OGRID: 372098
	Action Number: 350457
	Action Type: [C-103] Sub. Plugging (C-103P)

CONDITIONS

Created By	Condition	Condition Date
kfortner	Need C103Q and marker photo to release CBL is in file	8/13/2024