

State of New Mexico
Energy, Minerals and Natural Resources

Office
District I – (575) 393-6161
1625 N. French Dr., Hobbs, NM 88240
District II – (575) 748-1283
811 S. First St., Artesia, NM 88210
District III – (505) 334-6178
1000 Rio Brazos Rd., Aztec, NM 87410
District IV – (505) 476-3460
1220 S. St. Francis Dr., Santa Fe, NM
87505

OIL CONSERVATION DIVISION
1220 South St. Francis Dr.
Santa Fe, NM 87505

SUNDRY NOTICES AND REPORTS ON WELLS (DO NOT USE THIS FORM FOR PROPOSALS TO DRILL OR TO DEEPEN OR PLUG BACK TO A DIFFERENT RESERVOIR. USE "APPLICATION FOR PERMIT" (FORM C-101) FOR SUCH PROPOSALS.)		WELL API NO. 30-005-20677
1. Type of Well: Oil Well <input checked="" type="checkbox"/> Gas Well <input type="checkbox"/> Other <input type="checkbox"/>		5. Indicate Type of Lease STATE <input checked="" type="checkbox"/> FEE <input type="checkbox"/>
2. Name of Operator Cano Petro of New Mexico, Inc.		6. State Oil & Gas Lease No.
3. Address of Operator 801 Cherry Street Suite 3200 Unit 25 Fort Worth, TX 76102		7. Lease Name or Unit Agreement Name Cato San Andres Unit
4. Well Location Unit Letter <u>G</u> <u>1328</u> feet from the <u> </u> N <u> </u> line and <u>1336</u> feet from the <u> </u> E <u> </u> line Section <u>16</u> Township <u>08S</u> Range <u>30E</u> NMPM County <u>Chaves</u>		8. Well Number <u>94</u>
11. Elevation (Show whether DR, RKB, RT, GR, etc.) 4081		9. OGRID Number 330485
		10. Pool name or Wildcat Cato; San Andres

12. Check Appropriate Box to Indicate Nature of Notice, Report or Other Data

NOTICE OF INTENTION TO:

PERFORM REMEDIAL WORK ☐ PLUG AND ABANDON ☐
 TEMPORARILY ABANDON ☐ CHANGE PLANS ☐
 PULL OR ALTER CASING ☐ MULTIPLE COMPL ☐
 DOWNHOLE COMMINGLE ☐
 CLOSED-LOOP SYSTEM ☐
 OTHER: ☐

SUBSEQUENT REPORT OF:

REMEDIAL WORK ☐ ALTERING CASING ☐
 COMMENCE DRILLING OPNS. ☐ P AND A ☒
 CASING/CEMENT JOB ☐
 OTHER: ☐

13. Describe proposed or completed operations. (Clearly state all pertinent details, and give pertinent dates, including estimated date of starting any proposed work). SEE RULE 19.15.7.14 NMAC. For Multiple Completions: Attach wellbore diagram of proposed completion or recompletion.

See attached documents.

Spud Date:

Rig Release Date:

I hereby certify that the information above is true and complete to the best of my knowledge and belief.

SIGNATURE: Ethan Wakefield

TITLE: Authorized Representative

DATE 8/20/24

Type or print name: Ethan Wakefield E-mail address: e.wakefield@dwsrigs.com

PHONE: 405-343-7736

For State Use Only

APPROVED BY: _____ TITLE _____ DATE _____

Cano Petro Inc./NMOCD OWP

Plug And Abandonment End Of Well Report

Cato San Andres Unit #94

1328' FNL & 1336' FEL, Section 16, T8S, R30E

Chaves County, NM / API 30-005-20677

Work Summary:

- 4/20/21** Made NMOCD P&A operations notifications at 9:00 AM MST.
- 4/21/21** Checked well pressures: Tubing: 10 psi, Casing: 0 psi, Bradenhead: 0 psi. Bled down well. R/D production equipment and wellhead. R/U companion flange. N/U BOP and function tested. Worked packer free. TOOH with 104 joints of 2-3/8" tubing, 5 1/2" AD1 packer. P/U casing scraper and round tripped above top perforation at 3,274'. L/D casing scraper. Shut-in well for the day.
- 4/22/21** Checked well pressures: Tubing: N/A, Casing: 0 psi, Bradenhead: 0 psi. Bled down well. P/U 5 1/2" CR, TIH and set at 3,240'. Stung out of CR and circulated wellbore with 45 bbls of fresh water. Attempted to pressure test casing to 500 psi but casing failed to hold pressure. R/U cementing services. Pumped plug #1 from 3,240'-2,746' to cover the San Andres perforations and formation top. TOOH and L/D setting tool. WOC 4 hours. R/U wireline services. Ran CBL from 2,500' to surface. CBL results were sent to NMOCD for review. TIH and tagged plug #1 top at 2,820'. Circulated wellbore with fresh water. Pressure tested casing to 500 psi in which it successfully held pressure. Spotted 9.5 ppg mud spacer from 2,820'-1,500'. PUH to 1,558'. R/U cementing services. Pumped plug #2 from 1,558'-966' to cover the Yates and Rustler formation tops. TOOH. WOC overnight. Shut-in well for the day.
- 4/23/21** Checked well pressures: Tubing: N/A, Casing: 0 psi, Bradenhead: 0 psi. Bled down well. TIH and tagged plug #2 top at 995'. Spotted 9.5 ppg mud spacer from 995'-576'. TOOH and L/D tubing. R/U wireline

services. RIH and perforated squeeze holes at 567'. R/U cementing services. Successfully established circulation down casing through perforations at 567' and back around and out Bradenhead valve at surface. Successfully circulated cement down casing through perforations at 567' and back around and out Bradenhead valve at surface. WOC over the weekend. Shut-in well for the day.

4/8/21 Checked well pressures: Tubing: N/A, Casing: 0 psi, Bradenhead: 0 psi. Bled down well. P/U tagging sub. TIH and tagged surface plug at 42'. TOOH and L/D tagging sub. N/D BOP. Used backhoe to dig out wellhead for cut-off. Performed wellhead cut-off. Cement was at surface in surface casing. R/U cementing services. Topped-off 4 ½" production casing with 5 sx of cement. Installed P&A marker and plate per NMOCD regulations. Photographed the P&A marker in place and recorded its location via GPS coordinates. Back filled P&A marker. R/D and MOL. Material left on location: 104 joints of 2-3/8" tubing, wellhead, 5 ½" packer.

Plug Summary:

Plug #1:(San Andres Perforations and Formation Top 3,240'-2,820', 50 Sacks Class C Cement)

Mixed 50 sx Class C cement and spotted a balanced plug to cover the San Andres perforations and formation top.

Plug #2:(Yates and Rustler Formation Tops 1,558'-995', 60 Sacks Class C Cement)

Mixed 60 sx Class C cement and spotted a balanced plug to cover the Yates and Rustler formation tops.

Plug #3: (Surface Casing Shoe 567'-Surface, 172 Sacks, Class C Cement(5 sx for Top-Off))

RIH and perforated squeeze holes at 567'. R/U cementing services. Successfully established circulation down casing through perforations at 567' and back around and out Bradenhead valve at surface. Successfully circulated cement down casing through perforations at 567' and back around and out Bradenhead valve at surface. WOC over the weekend. P/U tagging sub. TIH and tagged surface plug at 42'. TOOH and L/D tagging sub. N/D BOP. Used backhoe to dig out wellhead for cut-off. Performed wellhead cut-off. Cement was at surface in surface casing. R/U cementing services. Topped-off 4 ½" production casing with 5 sx of cement. Installed P&A marker and plate per NMOCD regulations. Photographed the P&A marker in place and recorded its location via GPS coordinates. Back filled P&A marker. R/D and MOL.

Wellbore Diagram

Cato San Andres Unit #094
API #: 30-005-20677
Chaves County, New Mexico

Plug 3

567 feet - Surface
567 feet plug
172 sacks of Class C Cement
5 sacks for top-off

Plug 2

1558 feet - 995 feet
563 feet plug
60 sacks of Class C Cement

Plug 1

3240 feet - 2820 feet
420 feet plug
50 sacks of Class C Cement

Surface Casing

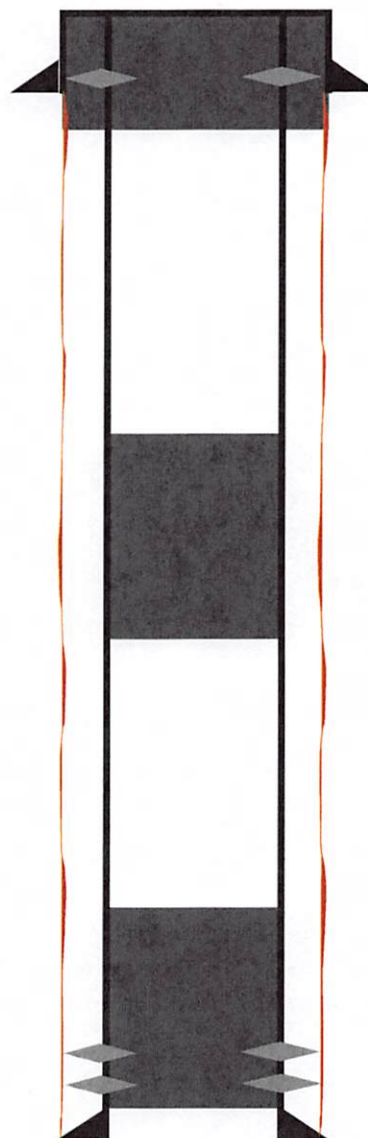
8.625" 24# @ 517 ft

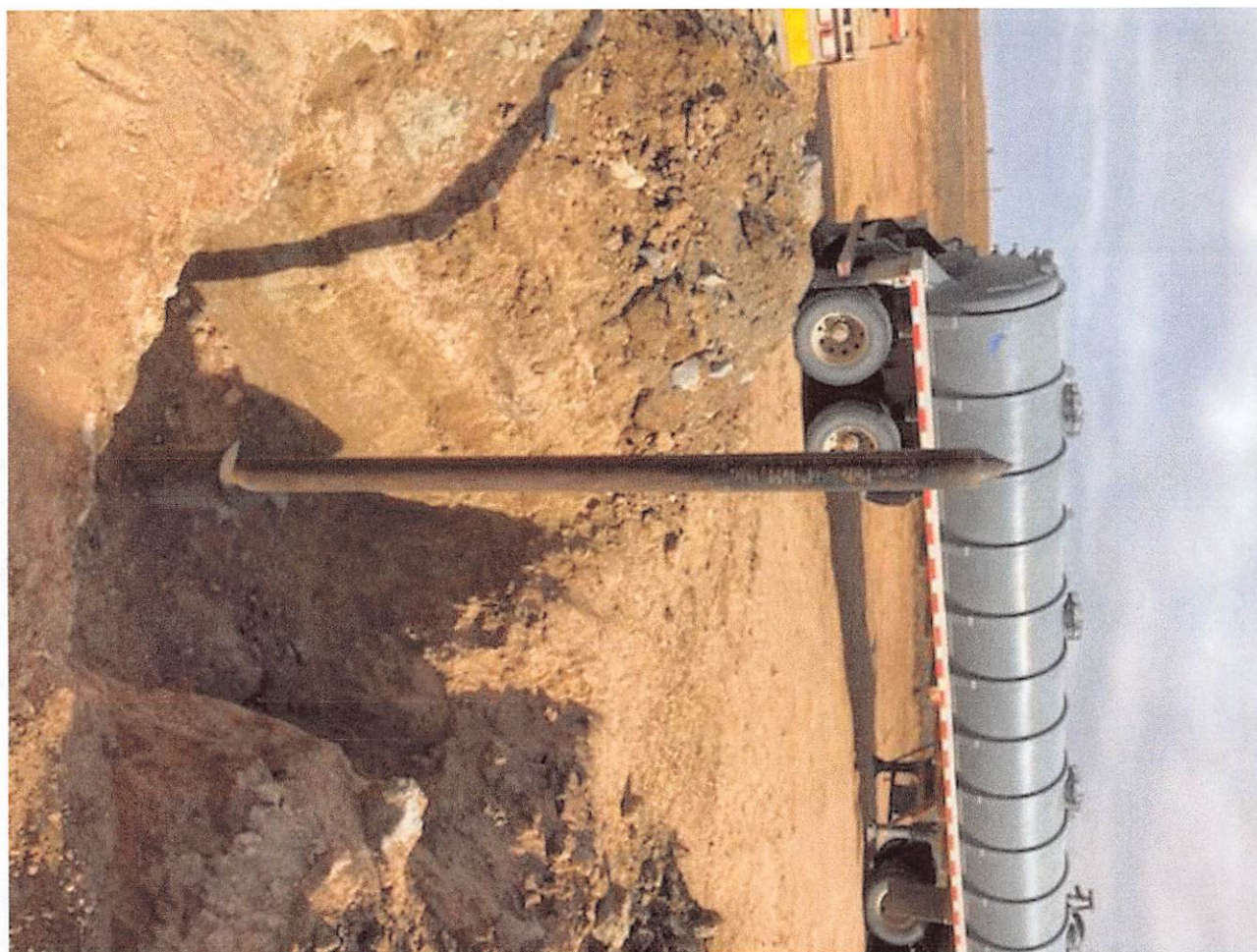
Formation

Rustler - 1072 ft
Yates - 1545 ft

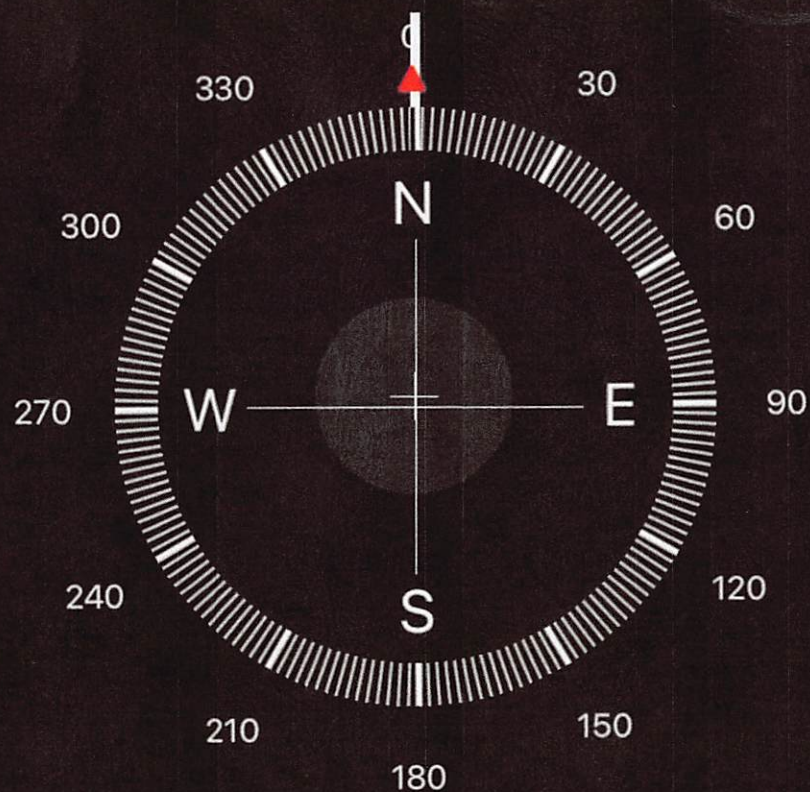
Production Casing

5.5" 15.5# @ 3550 ft









0° N

33°37'24" N 103°52'50" W

Roswell, NM

4080 ft Elevation

District I
1625 N. French Dr., Hobbs, NM 88240
Phone:(575) 393-6161 Fax:(575) 393-0720
District II
811 S. First St., Artesia, NM 88210
Phone:(575) 748-1283 Fax:(575) 748-9720
District III
1000 Rio Brazos Rd., Aztec, NM 87410
Phone:(505) 334-6178 Fax:(505) 334-6170
District IV
1220 S. St Francis Dr., Santa Fe, NM 87505
Phone:(505) 476-3470 Fax:(505) 476-3462

State of New Mexico
Energy, Minerals and Natural Resources
Oil Conservation Division
1220 S. St Francis Dr.
Santa Fe, NM 87505

CONDITIONS

Action 378490

CONDITIONS

Operator: CANO PETRO OF NEW MEXICO, INC. 801 Cherry Street Fort Worth, TX 76102	OGRID: 248802
	Action Number: 378490
	Action Type: [C-103] Sub. Plugging (C-103P)

CONDITIONS

Created By	Condition	Condition Date
loren.diede	None	8/28/2024