

Submit 1 Copy To Appropriate District Office
 District I – (575) 393-6161
 1625 N. French Dr., Hobbs, NM 88240
 District II – (575) 748-1283
 811 S. First St., Artesia, NM 88210
 District III – (505) 334-6178
 1000 Rio Brazos Rd., Aztec, NM 87410
 District IV – (505) 476-3460
 1220 S. St. Francis Dr., Santa Fe, NM 87505

State of New Mexico
 Energy, Minerals and Natural Resources

Form C-103
 Revised July 18, 2013

OIL CONSERVATION DIVISION
 1220 South St. Francis Dr.
 Santa Fe, NM 87505

SUNDRY NOTICES AND REPORTS ON WELLS (DO NOT USE THIS FORM FOR PROPOSALS TO DRILL OR TO DEEPEN OR PLUG BACK TO A DIFFERENT RESERVOIR. USE "APPLICATION FOR PERMIT" (FORM C-101) FOR SUCH PROPOSALS.)		WELL API NO. 30-005-20001
1. Type of Well: Oil Well <input checked="" type="checkbox"/> Gas Well <input type="checkbox"/> Other <input type="checkbox"/>		5. Indicate Type of Lease STATE <input checked="" type="checkbox"/> FEE <input type="checkbox"/>
2. Name of Operator Cano Petro of New Mexico, Inc.		6. State Oil & Gas Lease No.
3. Address of Operator 801 Cherry Street Suite 3200 Unit 25 Fort Worth, TX 76102		7. Lease Name or Unit Agreement Name Cato San Andres Unit
4. Well Location Unit Letter <u>N</u> <u>660</u> feet from the <u>S</u> line and <u>1980</u> feet from the <u>W</u> line Section <u>02</u> Township <u>08S</u> Range <u>30E</u> NMPM County <u>Chaves</u>		8. Well Number <u>006</u>
11. Elevation (Show whether DR, RKB, RT, GR, etc.) 4141		9. OGRID Number 248802
		10. Pool name or Wildcat Cato; San Andres

12. Check Appropriate Box to Indicate Nature of Notice, Report or Other Data

NOTICE OF INTENTION TO:		SUBSEQUENT REPORT OF:	
PERFORM REMEDIAL WORK <input type="checkbox"/>	PLUG AND ABANDON <input type="checkbox"/>	REMEDIAL WORK <input type="checkbox"/>	ALTERING CASING <input type="checkbox"/>
TEMPORARILY ABANDON <input type="checkbox"/>	CHANGE PLANS <input type="checkbox"/>	COMMENCE DRILLING OPNS. <input type="checkbox"/>	P AND A <input checked="" type="checkbox"/>
PULL OR ALTER CASING <input type="checkbox"/>	MULTIPLE COMPL <input type="checkbox"/>	CASING/CEMENT JOB <input type="checkbox"/>	
DOWNHOLE COMMINGLE <input type="checkbox"/>			
CLOSED-LOOP SYSTEM <input type="checkbox"/>			
OTHER: <input type="checkbox"/>		OTHER: <input type="checkbox"/>	

13. Describe proposed or completed operations. (Clearly state all pertinent details, and give pertinent dates, including estimated date of starting any proposed work). SEE RULE 19.15.7.14 NMAC. For Multiple Completions: Attach wellbore diagram of proposed completion or recompletion.

Please see attached report.

Spud Date:

Rig Release Date:

I hereby certify that the information above is true and complete to the best of my knowledge and belief.

SIGNATURE: Ethan Wakefield

TITLE: Authorized Representative

DATE 9/5/24

Type or print name: Ethan Wakefield E-mail address: e.wakefield@dwsrigs.com

PHONE: 405-343-7736

For State Use Only

APPROVED BY: _____ TITLE: _____ DATE: _____

Cano Petro Inc./NMOCD OWP

Plug And Abandonment End Of Well Report

Cato San Andres Unit #006

660' FSL & 1980' FWL, Section 2, T8S, R30E

Chaves County, NM / API 30-005-20001

Work Summary:

- 5/17/21** Made NMOCD P&A operations notifications at 9:00 AM MST.
- 5/18/21** MOL and R/U P&A rig. Checked well pressures: Tubing: 0 psi, Casing: 0 psi, Bradenhead: 0 psi. Bled down well. Prepped location with backhoe. P/U mule shoe sub. TIH to 2,200'. Shut-in well for the day.
- 5/19/21** Checked well pressures: Tubing: 0 psi, Casing: 0 psi, Bradenhead: 0 psi. Bled down well. Circulated down wellbore with mule shoe sub to a depth of 3,400'. TOOH and L/D mule shoe sub. P/U casing scraper and round tripped to 3,400'. P/U CR, TIH and set at 3,321'. Stung out of CR and circulated wellbore with 20 bbls of fresh water. R/U cementing services. Pumped plug #1 from 3,321'-3,077' to cover the San Andres perforations and formation top. TOOH and L/D setting tool. WOC overnight. Shut-in well for the day.
- 5/20/21** Checked well pressures: Tubing: 0 psi, Casing: 0 psi, Bradenhead: 0 psi. Bled down well. P/U tagging sub. TIH and tagged plug #1 top at 3,065'. Pressure tested production casing to 500 psi in which it successfully held pressure. Spotted 9.5 ppg mud spacer from 3,065'-1,600'. R/U wireline services. Ran CBL from 2,850' to surface. CBL results were sent to NMOCD office for review. CBL indicated TOC at 2,015'. RIH and perforated squeeze holes at 1,595'. Attempted to establish injection rate into perforations at 1,595' but was unsuccessful. Kerry Fortner approved spotting a balanced plug from 1,595'-1,150'. R/U cementing services. Pumped plug #2 from 1,595'-1,150' to cover the Yates formation top. WOC 4 hours. TIH and tagged plug #2 top at 1,200'. R/U wireline services. RIH and perforated

squeeze holes at 1,200'. Attempted to establish injection rate into perforations at 1,200' but was unsuccessful. Kerry Fortner approved spotting a balanced plug from 1,200'-953' to cover the Rustler formation top. R/U cementing services. Pumped plug #2 from 1,200'-953' to cover the Rustler formation top. WOC overnight. R/U wireline services. RIH and perforated squeeze holes at 400'. Successfully established circulation down casing through perforations at 400' and back around and out Bradenhead valve at surface with 25 bbls of fresh water. Shut-in well for the day.

5/21/21 Checked well pressures: Tubing: N/A, Casing: 0 psi, Bradenhead: 0 psi. Bled down well. P/U tagging sub. TIH and tagged plug #2 top at 948'. TOOH with tubing. R/U cementing services. Successfully established circulation down casing through perforations at 400' and back around and out Bradenhead valve at surface. Successfully circulated cement down casing through perforations at 400' and back around and out Bradenhead valve at surface. N/D BOP. R/U welding services. Used backhoe to dig out wellhead for cut-off. Performed wellhead cut-off. Cement was at surface in both surface and production casing strings. Installed P&A marker and plate per NMOCD regulations. Photographed the P&A marker in place and recorded its location via GPS coordinates. Back filled P&A marker. R/D and MOL. Material left on location: wellhead, pumpjack

Plug Summary:

Plug #1:(San Andres Perforations and Formation Top 3,321'-3,065', 25 Sacks Class C Cement)

Mixed 25 sx Class C cement and spotted a balanced plug to cover the San Andres perforations and formation top.

Plug #2:(Yates and Rustler Formation Tops 1,595'-948', 70 Sacks Class C Cement(Re-Pumped 25 sx))

RIH and perforated squeeze holes at 1,595'. Attempted to establish injection rate into perforations at 1,595' but was unsuccessful. Kerry Fortner approved spotting a balanced plug from 1,595'-1,150'. R/U cementing services. Pumped plug #2 from 1,595'-1,150' to cover the Yates formation top. WOC 4 hours. TIH and tagged plug #2 top at 1,200'. R/U wireline services. RIH and perforated squeeze holes at 1,200'. Attempted to establish injection rate into perforations at 1,200' but was unsuccessful. Kerry Fortner approved spotting a balanced plug from 1,200'-953' to cover the Rustler formation top. R/U cementing services. Pumped plug #2 from 1,200'-953' to cover the Rustler formation top. WOC overnight. P/U tagging sub. TIH and tagged plug #2 top at 948'.

Plug #3: (Surface Casing Shoe 400'-Surface, 120 Sacks, Class C Cement)

RIH and perforated squeeze holes at 400'. R/U cementing services. Successfully established circulation down casing through perforations at 400' and back around and out Bradenhead valve at surface with 25 bbls of fresh water. Successfully circulated cement down casing through perforations at 400' and back around and out Bradenhead valve at surface. N/D BOP. R/U welding services. Used backhoe to dig out wellhead for cut-off. Performed wellhead cut-off. Cement was at surface in both surface and production casing strings. Installed P&A marker and plate per NMOCD regulations. Photographed the P&A marker in place and recorded its location via GPS coordinates. Back filled P&A marker. R/D and MOL.

Wellbore Diagram

Cato San Andres Unit #006

API #: 30-005-20001

Chaves County, New Mexico

Plug 3

400 feet - Surface
400 feet plug
120 sacks of Class C Cement

Plug 2

1595 feet - 948 feet
647 feet plug
70 sacks of Class C Cement
25 sacks re-pumped

Plug 1

3321 feet - 3065 feet
256 feet plug
25 sacks of Class C Cement

Surface Casing

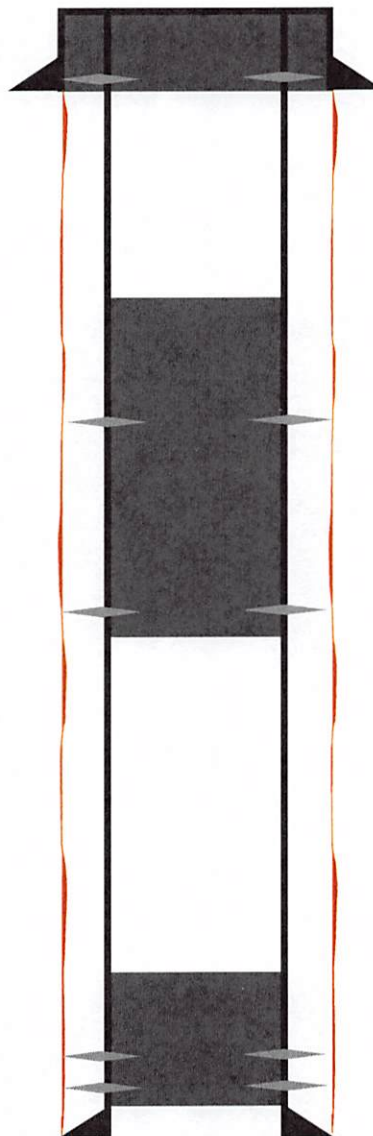
8.625" 24# @ 427 ft

Formation

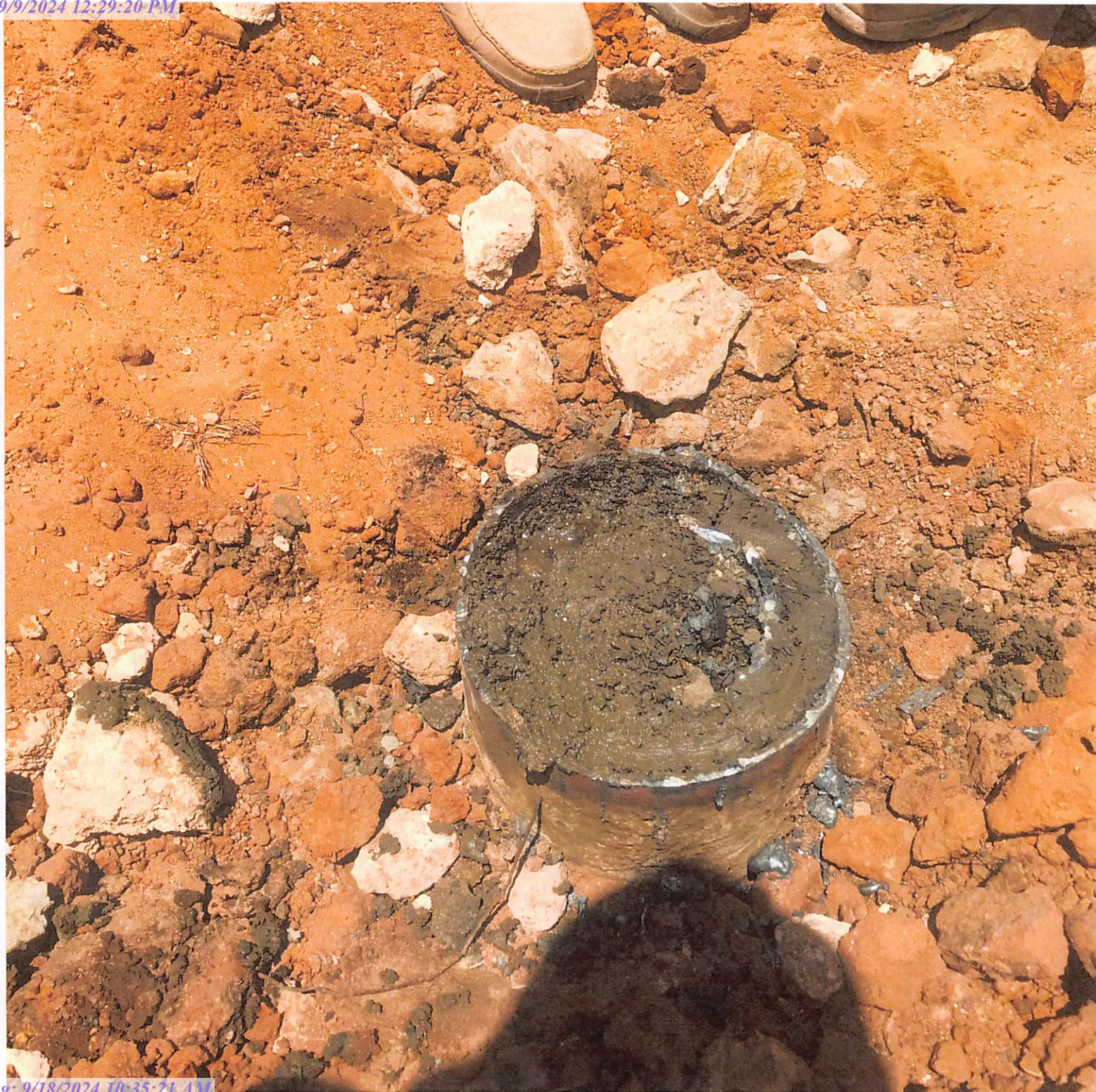
Rustler - 1072 ft
Yates - 1545 ft

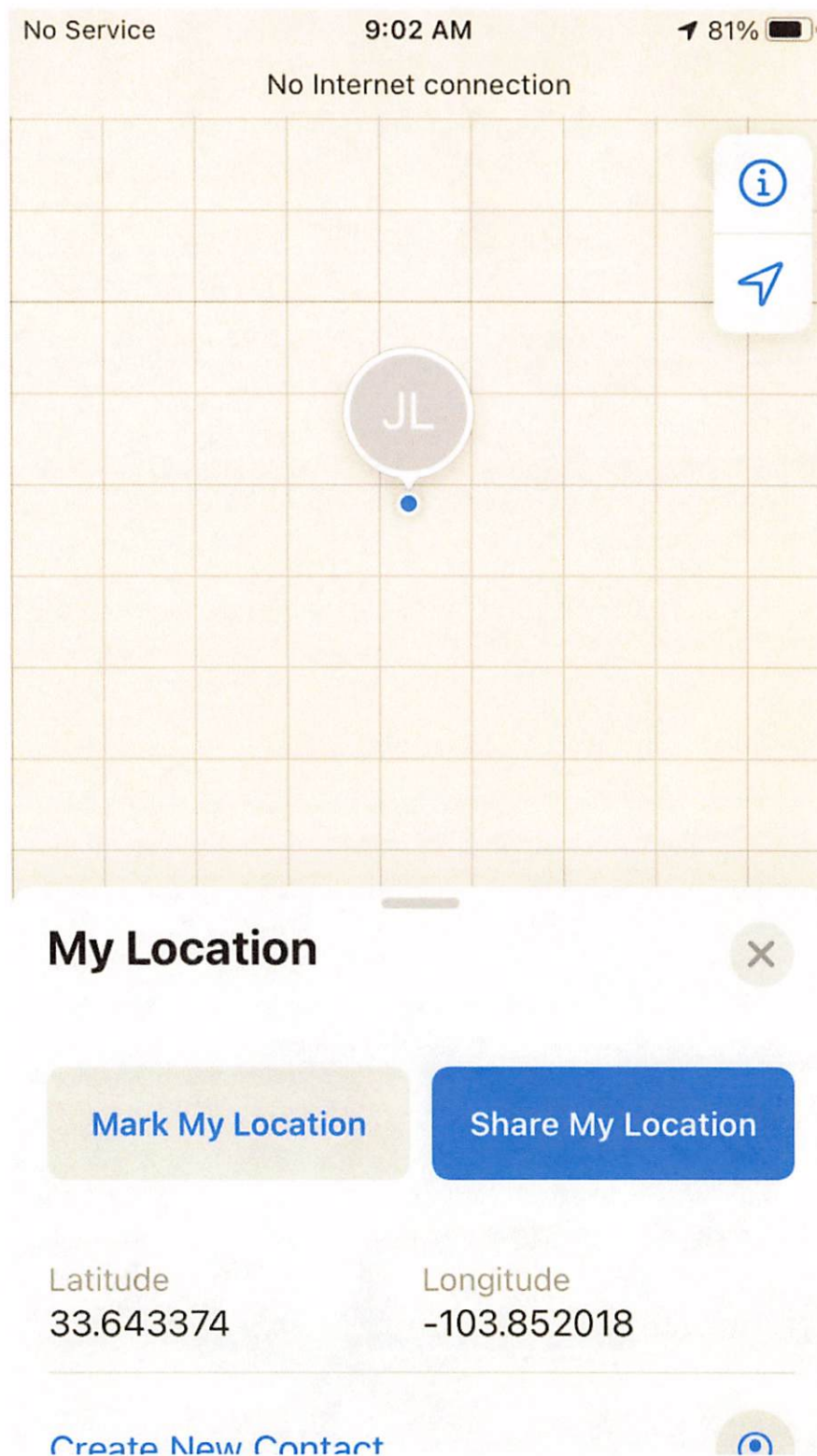
Production Casing

5.5" 15.5# @ 3537 ft









District I
1625 N. French Dr., Hobbs, NM 88240
Phone:(575) 393-6161 Fax:(575) 393-0720
District II
811 S. First St., Artesia, NM 88210
Phone:(575) 748-1283 Fax:(575) 748-9720
District III
1000 Rio Brazos Rd., Aztec, NM 87410
Phone:(505) 334-6178 Fax:(505) 334-6170
District IV
1220 S. St Francis Dr., Santa Fe, NM 87505
Phone:(505) 476-3470 Fax:(505) 476-3462

State of New Mexico
Energy, Minerals and Natural Resources
Oil Conservation Division
1220 S. St Francis Dr.
Santa Fe, NM 87505

CONDITIONS

Action 381713

CONDITIONS

Operator: CANO PETRO OF NEW MEXICO, INC. 801 Cherry Street Fort Worth, TX 76102	OGRID: 248802
	Action Number: 381713
	Action Type: [C-103] Sub. Plugging (C-103P)

CONDITIONS

Created By	Condition	Condition Date
samuel.romero	Operator must submit a C-103Q within one year from plugging date in order to perform a site inspection.	9/18/2024