

Santa Fe Main Office
Phone: (505) 476-3441 Fax: (55) 476-3462
General Information
Phone: (505) 629-6116

State of New Mexico
Energy, Minerals and Natural Resources

Form C-103
Revised July 18, 2013

Online Phone Directory Visit:
<https://www.emnrd.nm.gov/oed/contact-us/>

OIL CONSERVATION DIVISION
1220 South St. Francis Dr.
Santa Fe, NM 87505

WELL API NO. 30-041-20514
5. Indicate Type of Lease STATE <input checked="" type="checkbox"/> FEE <input type="checkbox"/>
6. State Oil & Gas Lease No.
7. Lease Name or Unit Agreement Name Lambirth State
8. Well Number 1
9. OGRID Number 328992
10. Pool name or Wildcat SWD Fusselman
11. Elevation (Show whether DR, RKB, RT, GR, etc.)

SUNDRY NOTICES AND REPORTS ON WELLS
(DO NOT USE THIS FORM FOR PROPOSALS TO DRILL OR TO DEEPEN OR PLUG BACK TO A DIFFERENT RESERVOIR. USE "APPLICATION FOR PERMIT" (FORM C-101) FOR SUCH PROPOSALS.)

1. Type of Well: Oil Well ☐ Gas Well ☐ Other SWD

2. Name of Operator
Sabinal Energy Operating, LLC

3. Address of Operator
1780 Hughes Landing Blvd, Ste 1200 The Woodlands, TX 77380

4. Well Location
Unit Letter H : 1980 feet from the North line and 510 feet from the East line
Section 36 Township 5S Range 32E NMPM Roosevelt County

12. Check Appropriate Box to Indicate Nature of Notice, Report or Other Data

NOTICE OF INTENTION TO:

PERFORM REMEDIAL WORK ☐ PLUG AND ABANDON ☐
TEMPORARILY ABANDON ☐ CHANGE PLANS ☐
PULL OR ALTER CASING ☐ MULTIPLE COMPL ☐
DOWNHOLE COMMINGLE ☐
CLOSED-LOOP SYSTEM ☐
OTHER: ☐

SUBSEQUENT REPORT OF:

REMEDIAL WORK ☐ ALTERING CASING ☐
COMMENCE DRILLING OPNS. ☐ P AND A ☒
CASING/CEMENT JOB ☐
OTHER: ☐

13. Describe proposed or completed operations. (Clearly state all pertinent details, and give pertinent dates, including estimated date of starting any proposed work). SEE RULE 19.15.7.14 NMAC. For Multiple Completions: Attach wellbore diagram of proposed completion or recompletion.

Tag existing CIBP at 7740', circulated MLF, tested casing to 500#; good. Ran bond log: TOC at 5310'. Stringers from 3880' to 4660' and 5110' to 5310'. Spot 45 sx Class H at 7740', spoke with NMOCD, tagged cement at 7335', spot 25 sx Class H at 7200', spot 25 sx Class H at 6566', spot 25 sx Class C at 5804', perforated at 4397'.
Pressured up on perforations to 750#; held. Bled down to the pump truck and repeated: same results. Spot 25 sx cement at 4472' with CaCl across perfs at 4397'. WOC and tagged at 4237'. Perforated at 3399', established good communication with the intermediate head. Squeezed with 40 sx cement. Tagged cement at 3246', perforated at 3149', established circulation to pit, noticed fluid coming out of cellar around wellhead. Dug out cellar, exposed the wellhead, fluid coming from corrosion hole in 8 5/8" casing. Put temporary patch on hole, squeezed the perforations with 35 sx cement, and tagged cement at 3016'.
Perforated at 2128', squeezed with 35 sx cement with CaCl; WOC and tagged at 1990'. Perforated at 1948', squeezed with 35 sx, tagged cement at 1811'. Perforated at 408', pumped cement down 5 1/2" casing to perfs at 408' and up the intermediate annulus to surface; took 105 sx to get good cement to pit. Dug out the cellar, removed the wellhead, filled up the 5 1/2" and 8 5/8" to surface with 5 sx. Existing cement in the 13 3/8" casing. Installed standard marker, removed the anchors, and cleaned the pit.

Spud Date:

11/17/1979

Rig Release Date:

I hereby certify that the information above is true and complete to the best of my knowledge and belief.

SIGNATURE Jamy Smith TITLE Land Tech II DATE 9/12/2024

Type or print name Jamy Smith E-mail address: jamys@sabinalenergy.com PHONE: 346-224-9889

For State Use Only

APPROVED BY: _____ TITLE _____ DATE _____

Conditions of Approval (if any):

**Sabinal Energy Operating, LLC
Lambirth State #1
30-041-20514**

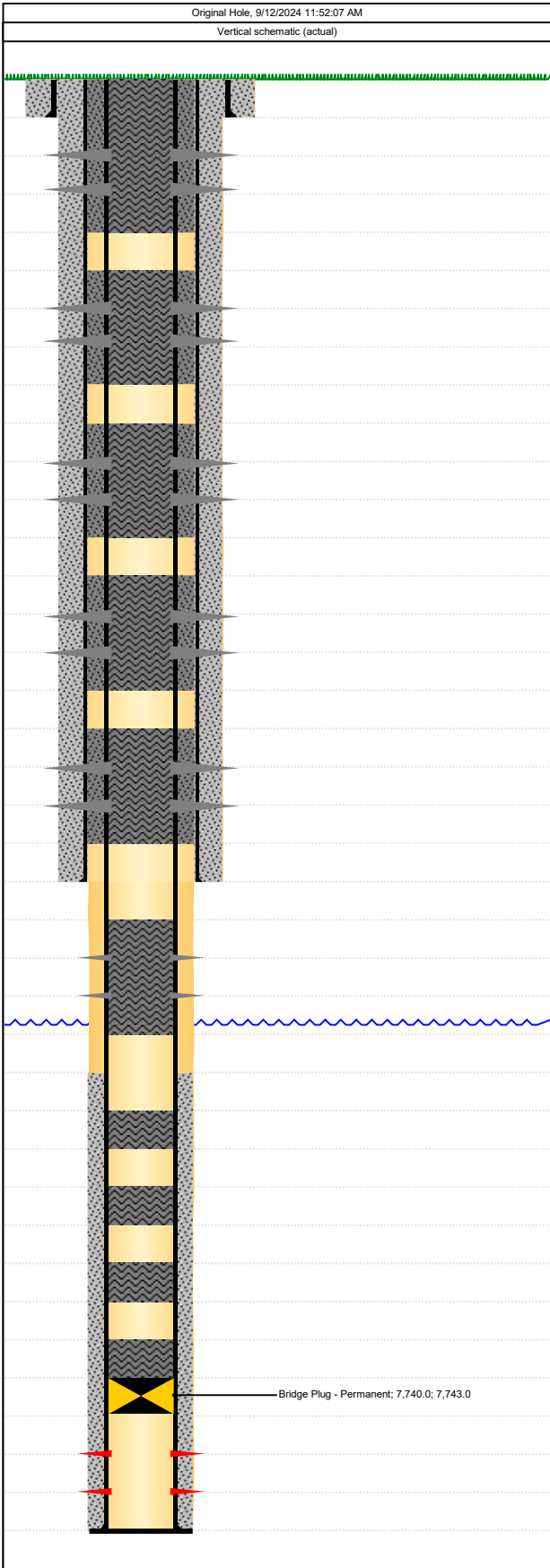
- 8/28/2024: Cleared location, set matting board and rigged up. Installed BOP. Moved in workstring and picked up 183 joints tubing. SION
- 8/29/2024: Finished picking up work string and tagged existing CIBP at 7740'. Circulated MLF and tested casing to 500#. Casing good. POOH with tubing and topped off casing with brine. SION.
- 8/30/2024: Ran bond log. Called TOC at 5310'. Stringers from 3880' to 4660' and 5110' to 5310'. Sent copy of log to the NMOCD for review. RIH with tubing and spot 45 sx Class H at 7740'. POOH and shut down.
- 9/3/2024: Spoke with NMOCD. Will proceed with procedures as approved without changes after reviewing bond log. Tagged cement at 7335'. POOH to 7200' and spot 25 sx Class H. POOH to 6566' and spot 25 sx Class H. POOH to 5804' and spot 25 sx Class C. Stood back 72 stands and perforated at 4397'. Set packer and pressured up on perforations to 750#. Held. Bled down to the pump truck and repeated with same results. Released packer and POOH with tubing. SION.
- 9/4/2024: RIH with tubing to 4472' and spot 25 sx cement with CaCl across perforations at 4397'. WOC and tagged at 4237'. Perforated at 3399'. Set packer and established good communication with the intermediate head. Squeezed with 40 sx cement. Left packer set and SION. Will tag in the morning.
- 9/5/2024: Tagged cement at 3246'. Perforated at 3149'. Set packer and established circulation to pit. Noticed fluid coming out of the cellar around the wellhead. Dug out cellar and exposed the wellhead. Fluid was coming from a corrosion hole in the 8 5/8" casing. Put a temporary patch on the hole and squeezed the perforations with 35 sx cement. Left packer set and SION.
- 9/6/2024: Tagged cement at 3016'. Perforated at 2128'. Set packer and squeezed with 35 sx cement with CaCl. WOC and tagged at 1990'. Perforated at 1948'. Set packer and squeezed with 35 sx. Left packer set and shut down.
- 9/9/2024: Tagged cement at 1811'. Perforated at 408'. Pumped cement down 5 1/2" casing to perforations at 408' and up the intermediate annulus to surface. Took 105 sx to get good cement to the pit. Rigged down, dug out the cellar and removed the wellhead. Filled up the 5 1/2" and 8 5/8" to surface with 5 sx. Existing cement in the 13 3/8" casing. Installed standard marker, removed the anchors, and cleaned the pit. Moved out equipment.



Wellbore Diagram

Well Name: LAMBIRTH STATE 1 SWD

API/UWI 30041205140000	Extra Well ID B 1603012	BOLO Shadow Key =7909	Field Name Lambrith Field	State/Province New Mexico	Well Configuration Type
Original KB Elevation (ft) 4,416.00	KB-Ground Distance (ft) 16.00	Spud Date 11/17/1979 00:00	Rig Release Date	PBTD (All) (ftKB) Original Hole - 7,990.0	Total Depth All (TVD) (ftKB)



Wellbore Sections								
Section Des		Size (in)		Act Top (ftKB)	Act Btm (ftKB)			
Surface		17		16.0	358.0			
Intermediate		12 1/4		358.0	3,500.0			
Production		7 7/8		3,500.0	7,990.0			
Casing Strings								
Csg Des	OD (in)	ID (in)	Wt/Len (lb/ft)	Grade	Top (ftKB)	Set Depth (ftKB)		
Surface	13 3/8	12.72	48.00	H-40	16.0	358.0		
Intermediate	8 5/8	8.10	24.00	J-55	16.0	3,500.0		
Production	5 1/2	4.89	17.00	J-55	16.0	7,990.0		
Perforations								
Date	Top (ftKB)	Btm (ftKB)	Shot Dens (shots/ft)	Current Status				
9/9/2024	408.0	409.0	2.0	Squeezed (408.0 - 409.0 ftKB)				
9/6/2024	1,948.0	1,949.0	2.0	Squeezed (1,948.0 - 1,949.0 ftKB)				
9/5/2024	2,128.0	2,129.0	2.0	Squeezed (2,128.0 - 2,129.0 ftKB)				
9/4/2024	3,149.0	3,150.0	2.0	Squeezed (3,149.0 - 3,150.0 ftKB)				
9/4/2024	3,399.0	3,400.0	2.0	Squeezed (3,399.0 - 3,400.0 ftKB)				
9/3/2024	4,397.0	4,398.0	2.0	Squeezed (4,397.0 - 4,398.0 ftKB)				
1/21/1994	7,796.0	7,806.0	2.0	Open - Flowing (7,796.0 - 7,806.0 ftKB)				
Tubing Strings								
Tubing Description		Run Date		String Length (ft)		Set Depth (ftKB)		
Jts	Item Des	OD (in)	ID (in)	Wt (lb/ft)	Grade	Len (ft)	Top (ftKB)	Btm (ftKB)
Rod Strings								
Rod Description		Run Date		String Length (ft)		Set Depth (ftKB)		
Jts	Item Des	OD (in)	Wt (lb/ft)	Grade	Len (ft)	Top (ftKB)	Btm (ftKB)	
Rod Pumps								
Bore (in)	API Pump T...	API Bbl Type	API Anchor...	Seat Assy T...	Barrel Leng...	Nom Plung...	Upper E...	Lwr Ext...

District I
1625 N. French Dr., Hobbs, NM 88240
Phone:(575) 393-6161 Fax:(575) 393-0720
District II
811 S. First St., Artesia, NM 88210
Phone:(575) 748-1283 Fax:(575) 748-9720
District III
1000 Rio Brazos Rd., Aztec, NM 87410
Phone:(505) 334-6178 Fax:(505) 334-6170
District IV
1220 S. St Francis Dr., Santa Fe, NM 87505
Phone:(505) 476-3470 Fax:(505) 476-3462

State of New Mexico
Energy, Minerals and Natural Resources
Oil Conservation Division
1220 S. St Francis Dr.
Santa Fe, NM 87505

CONDITIONS

Action 383197

CONDITIONS

Operator: Sabinal Energy Operating, LLC 1780 HUGHES LANDING BLVD THE WOODLANDS, TX 77380	OGRID: 328992
	Action Number: 383197
	Action Type: [C-103] Sub. Plugging (C-103P)

CONDITIONS

Created By	Condition	Condition Date
kfortner	Need C103Q and marker photo to release CBL is in files DHM installed 9/9/24	10/9/2024