

Form 3160-5
(June 2015)UNITED STATES
DEPARTMENT OF THE INTERIOR
BUREAU OF LAND MANAGEMENTFORM APPROVED
OMB No. 1004-0137
Expires: January 31, 2018**SUNDRY NOTICES AND REPORTS ON WELLS**
Do not use this form for proposals to drill or to re-enter an
abandoned well. Use Form 3160-3 (APD) for such proposals.

SUBMIT IN TRIPLICATE - Other instructions on page 2		5. Lease Serial No. NM - 022636
1. Type of Well <input checked="" type="checkbox"/> Oil Well <input type="checkbox"/> Gas Well <input type="checkbox"/> Other		6. If Indian, Allottee or Tribe Name
2. Name of Operator Cano Petro of NM. INC		7. If Unit of CA/Agreement, Name and/or No.
3a. Address 801 Cherry Street Unit 25 Suite 3200 Fort Worth, Texas 76102		8. Well Name and No. Cato San Andres #407
3b. Phone No. (include area code)		9. API Well No. 30-005-27970
4. Location of Well (Footage, Sec., T., R., M., or Survey Description) J-27-08S-30E 1980 FSL 1980 FEL		10. Field and Pool or Exploratory Area San Andres
		11. Country or Parish, State Chavez

12. CHECK THE APPROPRIATE BOX(ES) TO INDICATE NATURE OF NOTICE, REPORT OR OTHER DATA

TYPE OF SUBMISSION	TYPE OF ACTION			
<input type="checkbox"/> Notice of Intent	<input type="checkbox"/> Acidize	<input type="checkbox"/> Deepen	<input type="checkbox"/> Production (Start/Resume)	<input type="checkbox"/> Water Shut-Off
<input checked="" type="checkbox"/> Subsequent Report	<input type="checkbox"/> Alter Casing	<input type="checkbox"/> Hydraulic Fracturing	<input type="checkbox"/> Reclamation	<input type="checkbox"/> Well Integrity
<input type="checkbox"/> Final Abandonment Notice	<input type="checkbox"/> Casing Repair	<input type="checkbox"/> New Construction	<input type="checkbox"/> Recomplete	<input type="checkbox"/> Other
	<input type="checkbox"/> Change Plans	<input checked="" type="checkbox"/> Plug and Abandon	<input type="checkbox"/> Temporarily Abandon	
	<input type="checkbox"/> Convert to Injection	<input type="checkbox"/> Plug Back	<input type="checkbox"/> Water Disposal	

13. Describe Proposed or Completed Operation: Clearly state all pertinent details, including estimated starting date of any proposed work and approximate duration thereof. If the proposal is to deepen directionally or recompleat horizontally, give subsurface locations and measured and true vertical depths of all pertinent markers and zones. Attach the Bond under which the work will be performed or provide the Bond No. on file with BLM/BIA. Required subsequent reports must be filed within 30 days following completion of the involved operations. If the operation results in a multiple completion or recompleat in a new interval, a Form 3160-4 must be filed once testing has been completed. Final Abandonment Notices must be filed only after all requirements, including reclamation, have been completed and the operator has detennined that the site is ready for final inspection.)

Please see attached report and completed WBD.

ACCEPTED FOR RECORD

14. I hereby certify that the foregoing is true and correct. Name (Printed/Typed)		Title
Signature		Date

THE SPACE FOR FEDERAL OR STATE OFFICE USE

Approved by JENNIFER SANCHEZ Digitally signed by JENNIFER SANCHEZ Date: 2024.10.10 09:30:04 -06'00'	Petroleum Engineer	Date 10/10/2024
Conditions of approval, if any, are attached. Approval of this notice does not warrant or certify that the applicant holds legal or equitable title to those rights in the subject lease which would entitle the applicant to conduct operations thereon.	Office RFO	

Title 18 U.S.C Section 1001 and Title 43 U.S.C Section 1212, make it a crime for any person knowingly and willfully to make to any department or agency of the United States any false, fictitious or fraudulent statements or representations as to any matter within its jurisdiction.

(Instructions on page 2)

GENERAL INSTRUCTIONS

This form is designed for submitting proposals to perform certain well operations and reports of such operations when completed as indicated on Federal and Indian lands pursuant to applicable Federal law and regulations. Any necessary special instructions concerning the use of this form and the number of copies to be submitted, particularly with regard to local area or regional procedures and practices, are either shown below, will be issued by or may be obtained from the local Federal office.

SPECIFIC INSTRUCTIONS

Item 4 - Locations on Federal or Indian land should be described in accordance with Federal requirements. Consult the local Federal office for specific instructions.

Item 13: Proposals to abandon a well and subsequent reports of abandonment should include such special information as is required by the local Federal office. In addition, such proposals and reports should include reasons for the abandonment; data on any former or present productive zones or other zones with present significant fluid contents not sealed off by cement or otherwise; depths (top and bottom) and method of placement of cement plugs; mud or other material placed below, between and above plugs; amount, size, method of parting of any casing, liner or tubing pulled and the depth to the top of any tubing left in the hole; method of closing top of well and date well site conditioned for final inspection looking for approval of the abandonment. If the proposal will involve **hydraulic fracturing operations**, you must comply with 43 CFR 3162.3-3, including providing information about the protection of usable water. Operators should provide the best available information about all formations containing water and their depths. This information could include data and interpretation of resistivity logs run on nearby wells. Information may also be obtained from state or tribal regulatory agencies and from local BLM offices.

NOTICES

The privacy Act of 1974 and the regulation in 43 CFR 2.48(d) provide that you be furnished the following information in connection with information required by this application.

AUTHORITY: 30 U.S.C. 181 et seq., 351 et seq., 25 U.S.C. 396; 43 CFR 3160.

PRINCIPAL PURPOSE: The information is used to: (1) Evaluate, when appropriate, approve applications, and report completion of subsequent well operations, on a Federal or Indian lease; and (2) document for administrative use, information for the management, disposal and use of National Resource lands and resources, such as: (a) evaluating the equipment and procedures to be used during a proposed subsequent well operation and reviewing the completed well operations for compliance with the approved plan; (b) requesting and granting approval to perform those actions covered by 43 CFR 3162.3-2, 3162.3-3, and 3162.3-4; (c) reporting the beginning or resumption of production, as required by 43 CFR 3162.4-1(c) and (d) analyzing future applications to drill or modify operations in light of data obtained and methods used.

ROUTINE USES: Information from the record and/or the record will be transferred to appropriate Federal, State, local or foreign agencies, when relevant to civil, criminal or regulatory investigations or prosecutions in connection with congressional inquiries or to consumer reporting agencies to facilitate collection of debts owed the Government.

EFFECT OF NOT PROVIDING THE INFORMATION: Filing of this notice and report and disclosure of the information is mandatory for those subsequent well operations specified in 43 CFR 3162.3-2, 3162.3-3, 3162.3-4.

The Paperwork Reduction Act of 1995 requires us to inform you that:

The BLM collects this information to evaluate proposed and/or completed subsequent well operations on Federal or Indian oil and gas leases.

Response to this request is mandatory.

The BLM would like you to know that you do not have to respond to this or any other Federal agency-sponsored information collection unless it displays a currently valid OMB control number.

BURDEN HOURS STATEMENT: Public reporting burden for this form is estimated to average 8 hours per response, including the time for reviewing instructions, gathering and maintaining data, and completing and reviewing the form. Direct comments regarding the burden estimate or any other aspect of this form to U.S. Department of the Interior, Bureau of Land Management (1004-0137), Bureau Information Collection Clearance Officer (WO-630), 1849 C St., N.W., Mail Stop 401 LS, Washington, D.C. 20240

CANO PETRO OF NEW MEXICO, INC

Plug And Abandonment End Of Well Report

CATO SAN ANDRES UNIT #407

1980' FSL & 1980' FEL, Section 27, 08S, 30E

Chaves County, NM / API 30-005-27970

Work Summary:

- 9/29/24** Made BLM and NMOCD P&A operations notifications at 9:00 AM MST.
- 9/30/24** Moved P&A rig and equipment to the Cato field for the CSA #407. Re-installed fence at the Coll location in Jal.
- 10/1/24** Arrived on location. Held safety meeting with all personnel on location. Completed spiral gas check. Checked well pressures (tubing, casing, and BH 0 psi). Dug up cellar. Level out location with backhoe. Set base beam. Swap two 2" valves on wellhead. Moved pump jack base out of the way. Spot and R/U unit and equipment. ND WH. Removed 2 pop joints (2-7/8" 4' long), tubing slips, and tubing hanger. No tubing in well. NU BOP. Function test BOP. Shut in and secured well for the day.
- 10/2/24** Arrived on location. Held safety meeting with all personnel on location. Completed spiral gas check. Checked well pressures (tubing, casing, and BH 0 psi). R/U floor and equipment. Wait on work string to arrive. P/U 5.5" casing scraper. TIH to 3511'. Had to turn pipe to get past tight spots. Worked scraper through bad spot multiple times. L/D 2 joints. TOOH.
- 10/3/24** Arrived on location. Held safety meeting with all personnel on location. Completed spiral gas check. Checked well pressures (tubing, casing, and BH 0 psi). P/U 5.5" CR. TIH to 3460'. Set CR at 3460'. Sting out of CR. TOOH. Circulated hole with 45 bbls of fresh water. Wait on WL services. Shut in and secured well.
- 10/4/24** Arrived on location. Held safety meeting. Completed spiral gas check for H2S and other gas. Checked well pressures (tubing, casing, and

BH 0 psi). R/U wireline services. RIH and logged well. R/D wireline services. TIH with 108 joints to 3458'. Shutdown and secured well.

10/5/24 Arrived on location. Held safety meeting. Completed spiral gas check for H2S and other gas. Checked well pressures (tubing, casing, and BH 0 psi). R/U cementing services. Circulated well with 40 bbls of fresh water. Successfully pressure test casing to 800 psi for 30 minutes. Pumped plug #1 from 3460' to 3234'. R/D cementers. L/D 7 joints, TOOH to 1024'. WOC 4 hours. TIH and tagged plug #1 at 3230'. R/U cementing services. Pumped weighted mud spacer from 3230' to 2838'. R/D cementers. L/D 13 joints. R/U cementing services. Pumped plug #2 from 2840' to 2612'. R/D cementers. L/D 6 joints. R/U cementers. Pumped weighted mud spacer from 2615' to 2333'. R/D cementers. L/D 13 joints. R/U cementing services. Pumped plug #3 from 2332' to 2107'. L/D 7 joints. Pumped weighted mud spacer from 2110' to 1660'. R/D cementers. L/D 14 joints. R/U cementing services. Pumped plug #4 from 1664' to 940'. L/D 23 joints. R/U cementing services. Pumped weighted mud spacer from 940' to 565'. L/D 29 joints. Shut in and secured well for the day.

10/6/24 Arrived on location. Held safety meeting. Completed spiral gas check for H2S and other gas. Checked well pressures (tubing, casing, and BH 0 psi). TIH and tagged plug #4 at 932'. L/D 11 joints. TOOH. R/U wireline services. RIH and perforated at 565'. POOH. R/D wireline services. R/U cementing services. Attempted to establish and injection rate but casing pressured up (0.03 bbls/min at 490 psi). TIH 50' below perforations. R/U cementing services. Pumped plug #5 from 619' to 465'. R/D cementing services. L/D 5 joints. R/U cementing services. Reverse circulated at 452'. TOOH. WOC 4 hours. R/U cementing services to BH. Pumped 1 bbl/min at 300 psi down BH. R/D cementing services. TIH with 14 joints and tagged plug #5 at 452'. TOOH. R/U wireline services. RIH and perforated at 150'. POOH. R/D wireline services. R/U cementing services. Attempted to establish an injection rate, but casing pressured up (.05bb/min at 500 psi). R/D cementing services. R/U wireline services. RIH and perforated at 78'. POOH. R/D wireline services. R/U cementing services. Attempted to establish an injection rate (1 bbl/min at 500 psi). R/U wireline services. RIH and perforated at 71'. POOH. R/D wireline services. Established an injection rate of 3.5 bbl/min at 200 psi, no returns. Shut in and secured well for the day.

10/7/24 Arrived on location. Held safety meeting. Completed spiral gas check for H2S and other gas. Checked well pressures (tubing, casing, and BH 0 psi). TIH to 204'. R/U cementing services. Pumped plug #6 from 204' to 50'. L/D 5 joints. Shut in well. R/U cementing services.

Applied 500 psi to the casing. WOC 4 hours. TIH and tagged at 71'. L/D tubing. Pumped 7 bbls of fresh water at 3.3 bbl/min at 300 psi. Continued pumping plug #6 from 71' with 11 sx. Shut in well. WOC 4 hours. TIH and tagged plug #6 at 48'. R/U cementers. Continued pumping plug #6 from 48' to surface. R/D floor and equipment. ND BOP. Shut down for the day.

10/8/24 Arrived on location. Held safety meeting. Completed spiral gas check for H2S and other gas. Checked well pressures (tubing, casing, and BH 0 psi). ND BOP. Dig cellar 3' deeper. R/U welder on location. Performed wellhead cut off. Tagged cement at 50' in both the 8-5/8" and 5-1/2" strings. R/U cementing services. Topped off both casing strings with 12 sx. Weld on marker per all local regulations. Prepare to MOL.

Plug Summary:

Plug #1: (Perforations, 3,460'-3,230', 25 Sacks Type I/II Cement)

P/U 5.5" CR. TIH to 3460'. Set CR at 3460'. Sting out of CR. TOOH. Logged well. TIH. Pumped plug #1 from 3460' to 3234'. R/D cementers. L/D 7 joints, TOOH to 1024'. WOC 4 hours. TIH and tagged plug #1 at 3230'.

Plug #2: (San Andres Formation Top, 2,840'-2,612', 25 Sacks Type I/II Cement)

R/U cementing services. Pumped plug #2 from 2840' to 2612'. R/D cementers.

Plug #3: (Queen Formation Tops, 2,332'-2,107', 25 Sacks Type I/II Cement)

R/U cementing services. Pumped plug #3 from 2332' to 2107'. R/D cementers.

Plug #4: (7 Rivers, Yates, Base Salt, Top Salt, and Rustler Formation Tops, 1,664'-932', 80 Sacks Type I/II Cement)

R/U cementing services. Pumped plug #4 from 1664' to 940'. R/D cementers. WOC overnight. TIH and tagged plug #4 at 932'.

Plug #5: (Surface Casing Shoe Top, 619'-452', 17 Sacks Type I/II Cement)

R/U wireline services. RIH and perforated at 565'. POOH. R/D wireline services. R/U cementing services. Attempted to establish and injection rate but casing pressured up (0.03 bbls/min at 490 psi). TIH to 619'. R/U cementing services. Pumped plug #5 from 619' to 465'. R/D cementing services. L/D 5 joints. R/U cementing services. Reverse circulated at 452'. TOOH. WOC 4 hours. TIH with 14 joints and tagged plug #5 at 452'.

Plug #6: (Surface, 204'-Surface, 52 Sacks Type I/II Cement) (12 Sacks for top off)

R/U wireline services. RIH and perforated at 150'. POOH. R/D wireline services. R/U cementing services. Attempted to establish an injection rate, but casing pressured up (.05bb/min at 500 psi). R/D cementing services. R/U wireline services. RIH and perforated at 78'. POOH. R/D wireline services. R/U cementing services. Attempted to establish an injection rate (1 bbl/min at 500 psi). R/U wireline services. RIH and perforated at 71'. POOH. R/D wireline services. Established an injection rate of 3.5 bbl/min at 200 psi, no returns. TIH to 204'. R/U cementing services. Pumped plug #6 from 204' to 50'. L/D 5 joints. Shut in well. R/U cementing services. Applied 500 psi to the casing. WOC 4 hours. TIH and tagged at 71'. L/D tubing. Pumped 7 bbls of fresh water at 3.3 bbl/min at 300 psi. Continued pumping plug #6 from 71' with 11 sx. Shut in well. WOC 4 hours. TIH and tagged plug #6 at 48'. R/U cementers. Continued pumping plug #6 from 48' to surface. R/U welder on location. Performed wellhead cut off. Tagged cement at 50' in both the 8-5/8" and 5-1/2" strings. R/U cementing services. Topped off both casing strings with 12 sx. Weld on marker per all local regulations.

Completed Wellbore Diagram

CANO PETRO OF NEW MEXICO, INC.

CATO SAN ANDRES UNIT #407

API: 30-005-27970

Chaves County, New Mexico

LCPH: YES

Surface Casing

8.625" 24# @ 515 ft

OH: 12.25'

Plug 6

204 feet - surface

204 foot plug

52 Sacks of Type I/II Cement

Plug 5

619 feet - 452 feet

167 foot plug

17 Sacks of Type I/II Cement

Plug 4

1664 feet - 932 feet

732 foot plug

80 Sacks of Type I/II Cement

Plug 3

2332 feet - 2107 feet

225 foot plug

25 Sacks of Type I/II Cement

Plug 2

2840 feet - 2612 feet

228 foot plug

25 Sacks of Type I/II Cement

Plug 1

3460 feet - 3230 feet

230 foot plug

25 sacks of Type I/II Cement

Perforations

3510 feet - 3592 feet

Estimated Formations

Rustler - 1081 feet

T Salt - 1116 feet

B Salt - 1380 feet

Yates - 1610 feet

Queen - 2283 feet

San Andres - 2788 feet

CBL TOC: 90 feet

CIBP @ 3460 feet

Production Casing

5.5" 17# @ 3895 feet

OH: 7.875"

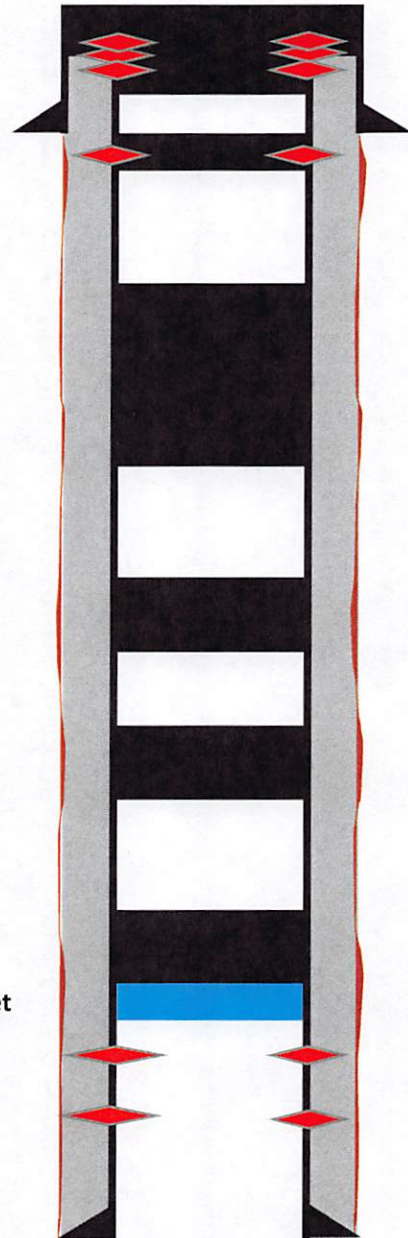




Figure 1: Marker



Figure 2: Top Off

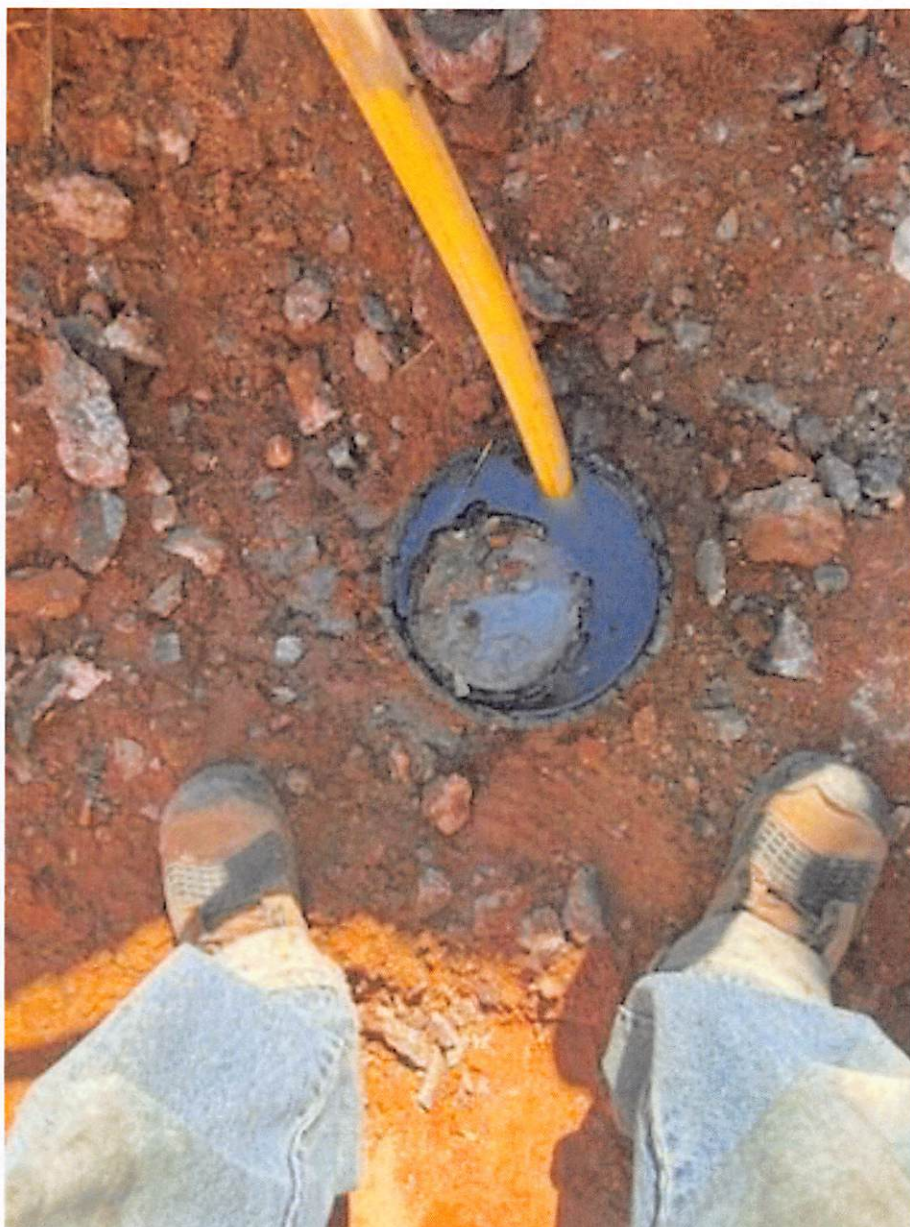


Figure 3:Cut off

District I
1625 N. French Dr., Hobbs, NM 88240
Phone:(575) 393-6161 Fax:(575) 393-0720
District II
811 S. First St., Artesia, NM 88210
Phone:(575) 748-1283 Fax:(575) 748-9720
District III
1000 Rio Brazos Rd., Aztec, NM 87410
Phone:(505) 334-6178 Fax:(505) 334-6170
District IV
1220 S. St Francis Dr., Santa Fe, NM 87505
Phone:(505) 476-3470 Fax:(505) 476-3462

State of New Mexico
Energy, Minerals and Natural Resources
Oil Conservation Division
1220 S. St Francis Dr.
Santa Fe, NM 87505

CONDITIONS

Action 391872

CONDITIONS

Operator: CANO PETRO OF NEW MEXICO, INC. 801 Cherry Street Fort Worth, TX 76102	OGRID: 248802
	Action Number: 391872
	Action Type: [C-103] Sub. Plugging (C-103P)

CONDITIONS

Created By	Condition	Condition Date
loren.diede	None	10/21/2024