

Santa Fe Main Office

Phone: (505) 476-3441 Fax: (55) 476-3462

General Information

Phone: (505) 629-6116

Online Phone Directory Visit:

<https://www.emnrd.nm.gov/ocd/contact-us/>State of New Mexico
Energy, Minerals and Natural ResourcesForm C-103
Revised July 18, 2013OIL CONSERVATION DIVISION
1220 South St. Francis Dr.
Santa Fe, NM 87505

SUNDRY NOTICES AND REPORTS ON WELLS (DO NOT USE THIS FORM FOR PROPOSALS TO DRILL OR TO DEEPEN OR PLUG BACK TO A DIFFERENT RESERVOIR. USE "APPLICATION FOR PERMIT" (FORM C-101) FOR SUCH PROPOSALS.) 1. Type of Well: Oil Well <input checked="" type="checkbox"/> Gas Well <input type="checkbox"/> Other <input type="checkbox"/>		WELL API NO. 30-015-39854
2. Name of Operator SPUR ENERGY PARTNERS LLC		5. Indicate Type of Lease STATE <input checked="" type="checkbox"/> FEE <input type="checkbox"/>
3. Address of Operator 9655 KATY FREEWAY, SUITE 500, HOUSTON, TX 77024		6. State Oil & Gas Lease No.
4. Well Location Unit Letter J : 2310 feet from the SOUTH line and 1650 feet from the EAST line Section 08 Township 17S Range 29E NMPM EDDY County		7. Lease Name or Unit Agreement Name CONOCO 8 STATE
11. Elevation (Show whether DR, RKB, RT, GR, etc.) 3620' GR		8. Well Number 2
		9. OGRID Number 328947
		10. Pool name or Wildcat EMPIRE; GLORIETA-YESO, EAST

12. Check Appropriate Box to Indicate Nature of Notice, Report or Other Data

NOTICE OF INTENTION TO:

PERFORM REMEDIAL WORK ☐ PLUG AND ABANDON ☐
 TEMPORARILY ABANDON ☐ CHANGE PLANS ☐
 PULL OR ALTER CASING ☐ MULTIPLE COMPL ☐
 DOWNHOLE COMMINGLE ☐
 CLOSED-LOOP SYSTEM ☐
 OTHER: ☐

SUBSEQUENT REPORT OF:

REMEDIAL WORK ☐ ALTERING CASING ☐
 COMMENCE DRILLING OPNS. ☐ P AND A ☒
 CASING/CEMENT JOB ☐
 OTHER: ☐

13. Describe proposed or completed operations. (Clearly state all pertinent details, and give pertinent dates, including estimated date of starting any proposed work). SEE RULE 19.15.7.14 NMAC. For Multiple Completions: Attach wellbore diagram of proposed completion or recompletion.

Please find post job report and plugged wellbore diagram attached for your review.
Thank you.

Spud Date:

Rig Release Date:

I hereby certify that the information above is true and complete to the best of my knowledge and belief.

SIGNATURE Sarah Chapman TITLE REGULATORY DIRECTOR DATE 11/07/2024

Type or print name SARAH CHAPMAN E-mail address: SCHAPMAN@SPURENERGY.COM PHONE: 832-930-8613
For State Use Only

APPROVED BY: _____ TITLE _____ DATE _____
 Conditions of Approval (if any): _____

Conoco 8 State 2: Attempted Cement Squeeze and P&A Summary	
10/9/2024	ARRIVED ON LOCATION AND HELD PRE JOB SAFETY MEETING. SPOT SPUR MATTING BOARD. ANCHORS ARE UP TO DATE. CREW TOOK LUNCH. MOVED IN AND RIGGED UP RIG, SET H2S MONITOR IN PLACE. SHUT IN TUBING PRESSURE 850PSI. SHUT IN CASING PRESSURE 850PSI. RIGGED UP KILL TRUCK TO TUBING AND PUMPED 5BBLS TREATED FRESH WATER THEN PRESSURED UP TO 1500PSI AND WOULD BLEED BACK TO 850 INSTANTLY. BLED CASING TO 600PSI AND TUBING DROPPED TO 600PSI. SHUT THE VALVE AND INSTANTLY PRESSURED UP TO 850PSI. KILL MUD WILL BE ON LOCATION IN THE MORNING. SHUTDOWN FOR THE NIGHT.
10/10/2024	ARRIVED ON LOCATION AND HELD PRE-JOB SAFETY MEETING. H2S MONITOR IS IN PLACE. RIGGED UP KILL TRUCK TO TUBING AND PUMP 23BBLS 13# CALCIUM CARBONATE MUD. SHUT IN TUBING PRESSURE 0 PSI. RIGGED UP KILL TrK TO CASING AND PUMPED 60BBLS 13# CALCIUM CARBONATE MUD DOWN ANNULUS. SHUT IN CASING PRESSURE 0 PSI. WELL ON SLIGHT VACUUM AFTER 10 MIN. WAIT. LAID DOWN POLISH ROD AND STUFFING BOX. UNSEATED PUMP EASILY. TRIPPED OUT OF HOLE W/ 15- 1 1/4" FG RODS AND RODS STARTED SWABBING MUD OUT OF TUBING. DISCUSSED W/BILL AND DECISION MADE TO CLOSE RADIGAN AND PRESSURE UP TUBING. THEN WILL WORK RODS UP AND DOWN TO CLEAR A CHANNEL THRU RESTRICTION. CREW SHUTDOWN FOR LUNCH. PRESSURE TUBING TO 500PSI. AND WORK RODS UP & DOWN. CONTINUE TRIPPING OUT OF HOLE W/RODS. FG RODS HAVE PITTING ON SHOULDERS, 7/8" RODS 1-95 HAVE HEAVY SCALE AND PITTING ON RODS. 7/8" RODS 96-110 HAVE NO VISIBLE PITTING OR WEAR. PUMP WON'T SCOPE IN. TUBING AND CASING STARTED FLOWING ONCE WE GOT OUT W/PUMP. TALKED TO BILL AND WILL HAVE 110BBLS 16# MUD IN THE MORNING. PUMPED A TOTAL OF 110BBLS 13# MUD FOR WELL CONTROL. SECURE WELL AND SHUTDOWN FOR THE NIGHT.
10/11/2024	ARRIVED ON LOCATION AND HELD PRE-JOB SAFETY MEETING. H2S MONITOR IS IN PLACE. RIGGED UP KILL TRUCK TO TUBING AND PUMP 23BBLS 16# CALCIUM CARBONATE MUD. SHUT IN TUBING PRESSURE 0 PSI. RIGGED UP KILL TRUCK TO CASING AND PUMP 60BBLS 16# CALCIUM CARBONATE MUD DOWN ANNULUS. SHUT IN CASING PRESSURE 0 PSI. NIPPLED DOWN WELLHEAD & NIPPLED UP BOP. RELEASE 5 1/2" X 2 7/8" TAC SET @3661'. STRING WEIGHT WAS 22PTS. TUBING HAD PARTED. TRIPPED OUT OF HOLE W/ TUBING AS FOLLOWS: 103 JTS 2 7/8" 6.5# J-55 EUE 8RD TBG and 26' OF JT #104. TUBING PULLED SO FAR IS PITTED AND HAS HOLES SCATTERED THROUGHOUT. SEVERAL JTS PARTED WHEN TONGS TRIED TO BREAK JT APART. TOP OF FISH @ 3462'. SECURE WELL AND SHUT DOWN TILL TUESDAY.
10/15/2024	ARRIVED ON LOCATION AND HELD PRE-JOB SAFETY MEETING, H2S EQUIPMENT IN PLACE, 0# SHUT IN CASING PRESSURE, LOADED L-80 AND TALLYED TUBING ON PIPE RACKS, WAITED ON DECISION ON WHAT TO RUN, RAN IN HOLE WITH MILL TO DERSS OFF FISH, RAN IN HOLE WITH MILL AND 23 JNTS L-80, KILL TRUCK WILL NOT START, SECURED WELL, WAITING ON MECHANIC, MECHANIC AND VAC TRUCK ARRIVED ON LOCATION, CONTINUE TRIPPING IN HOLE WITH MILL AND 2 7/8 L-80 TUBING SLOWLY TO PREVENT LOSS OF DISPLACEMENT OF KILL FLUID, ON JNT 89 # 2800' TUBING STARTED TO FLOW, RIGGED UP KILL TRUCK ON TUBING AND TRIED TO PUMP KILL FLUID OUT OF FRAC TANK, KILL FLUID IS BELOW MANIFOLD AND KILL TRUCK CAN NOT PULL THE KILL FLUID, NOTIFIED BILL, ORDERED 2 LOADS 120 BBLS OF 16# KILL FLUID TO BE DELIVERD TO LOCATION 7 AM TOMORROW MORNING, SECURED WELL, SHUT DOW FOR THE NIGHT.
10/16/2024	ARRIVED ON LOCATION, HELD PRE-JOB SAFETY MEETING, H2S EQUIPMENT IN PACE, 0# SHUT IN CASING PRESSURE AND 0# SHUT IN TUBING PRESSURE, CONTINUE TRIPPING IN HOLE WITH MILL AND 2 7/8" L-80, TRIPPED IN HOLE WITH 3

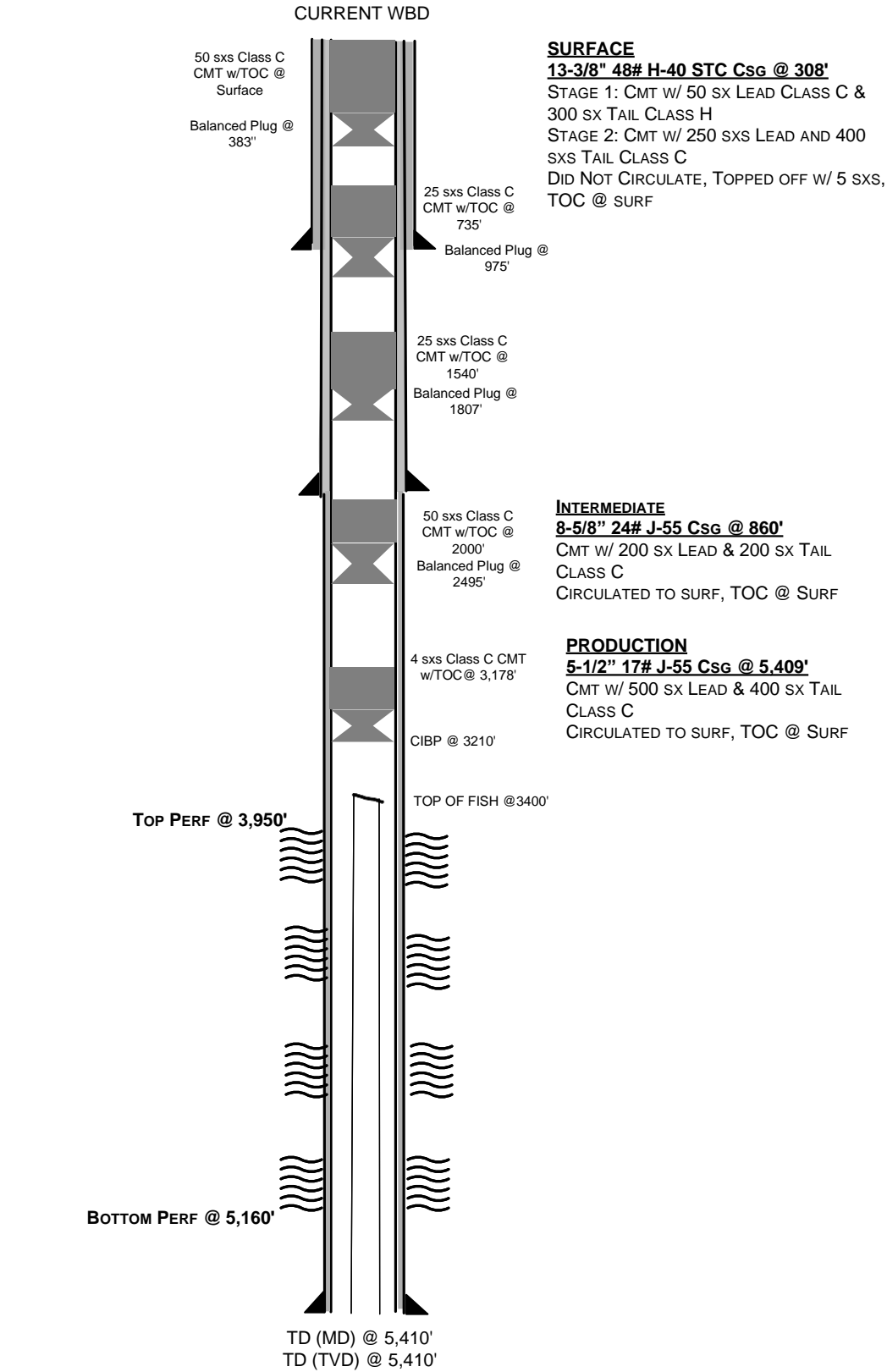
	JTS - 2 7/8 L-80 AND TUBING STARTED TO FLOW, CLOSED IN CASING AND PUMPED 9 BBLS 16# DOWN TUBING, TUBING IS DEAD, MONITORED TUBING AND CASING FOR 15 MINS, CONTINUE TRIPPING IN HOLE WITH MILL AND 2 7/8 L-80, TAGGED TOP OF FISH ON JNT 108 @ 3400', LAID DOWN JNT 108, RIGGED UP SWIVEL SWIVEL ON JNT 108, STARTED MILLING ON FISH, MILLED FISH DOWN 1', RIGGED DOWN SWIVEL, PULLED OUT OF HOLE WITH 2 7/8" L-80 AND MILL, CREW SHUT DOWN FOR LUNCH, CONTINUE PULLING OUT OF HOLE WITH 2 7/8 L-80 AND MILL, OUT OF HOLE WITH 2 7/8 L-80 AND MILL, MADE UP OVER SHOT WITH 2 7/8 GRAPPLE WITH MILL CONTROL, TRIPPED IN HOLE WITH OVER SHOT AND 2 7/8" L-80, 60' FROM TAGGING FISH RIG BUSTED A COOLANT LINE, SECURED WELL, SDFN, WAITING ON MECHANIC TO FIX COOLANT LINE
10/17/2024	ARRIVED ON LOCATION, HELD PRE-JOB SAFETY MEETING, H2S EQUIPMENT IN PLACE, 0# SHUT IN CASING PRESSURE AND 0# SHUT IN TUBING PRESSURE, TRIPPED IN HOLE WITH 1 STAND OF 2 7/8 L-80, TAGGED FISH, ATTEMPTED TO LATCH ONTO FISH, PULLED OUT OF HOLE WITH 2 7/8 L-80 AND OVERSHOT TO LOOK AT TOOLS, OUT OF HOLE WITH 2 7/8 AND OVERSHOT, THERE IS MARKS INSIDE THE MILL CONTROL AND GRAPPLE, GRAPPLE DID NOT ENGAGE, DISCUSSED WITH ENGINEERS, DECISION MADE TO RELEASE WIRELINE AND RUN IN HOLE WITH SHOE, T-DOG AND WASH PIPE TO CUT OVER TAC, WAITING ON TOOLS TO ARRIVE ON LOCATION, TOOLS ARRIVE ON LOCATION, MEASURED AND MADE UP TOOL, RAN IN HOLE WITH 4 5/8" 5' SHOE, T-DOG, 10 - 4 1/2" WASH PIPE. TOP JNT, AND 40 - 2 7/8" L-80, PUTTING SHOE @ 1580', SECURED WELL, SHUT DOWN FOR NIGHT, WILL CONTINUE TRIPPING IN HOLE IN THE MORNING TO WASH OVER TAC
10/18/2024	ARRIVED ON LOCATION, HELD PRE-JOB SAFETY MEETING, H2S EQUIPMENT IN PLACE, CONTINUE TIH WITH 4 5/8" 5' SHOE, T-DOG, 10 - 4 1/2" WASH PIPE, TOP JNT, 2 7/8" L-80, TAGGED TOP OF FISH @ 3400' RU SWIVEL, SWIVEL HAS BAD HYDRAULIC LEAK, RD SWIVEL, WAITING ON SWIVEL FROM HOBBS, NEW SWIVEL AOL, RU SWIVEL, STARTED WASHING OVER FISH @ 3400', TRIED TO PUMP DOWN TUBING WITH KILL TRUCK AND PRESSURED UP TO 1000 PSI, MADE 4' SETTING 2 POINTS DOWN ON FISH SWIVEL TORQUED UP WRAPING KELLY HOSE AND HYDRAULIC HOSES AROUND TUBING AND TWISTING UP THE DRILL LINE, PICKED UP ON TUBING AND TUBING IS DRAGGING AND WEIGHING 6 POINT HEAVIER, DISCUSSED WITH BILL, DECISION MADE TO POOH AND SEE WHAT WE HAVE, CREW SDFL, RD SWIVEL, POOH TO CHECK TOOLS, OOH WITH 2 7/8" L-80 TUBING AND TOOLS, BOTTOM OF MILL WORN DOWN AND HAD DEEP GROOVES FROM THE CASING ON THE OUTER WALL AND GROOVES FROM THE TUBING ON THE INNER WALL OF THE SHOE, LD WASH PIPE, SECURED WELL, SDFW
10/21/2024	ARRIVED ON LOCATION, HELD PRE-JOB SAFETY MEETING, H2S EQUIPMENT IN PLACE, 0# SHUT IN CASING PRESSURE AND 0# SHUT IN TUBING PRESSURE, RUN IN HOLE WITH BIT AND SCRAPER TAGGED AT 3278'. DAVID ALVARADO FROM THE STATE IS ON LOCATION AND WANTS US TO RUN BACK IN HOLE WITH PACKER TO 3200' AND TEST CASING AND TRY AND ESTABLISH INJECTION RATE, PULLED OUT OF HOLE WITH 2 7/8 L-80 AND BIT AND SCRAPER, OUT OF HOLE WITH BIT AND SCRAPER, TRIPPED IN HOLE WITH PACKER AND 2 7/8" L-80, SET PACKER @ 3210" PRESSURED UP ON CASING TO 600 PSI, ATTEMPTED TO ESTABLISH INJECTION RATE ON TUBING AND TUBING PRESSURED UP TO 2400 PSI AND CASING TO 750 AND PRESSURE HELD, HELD PRESSURE ON CASING FOR 30 MINS, BLEED DOWN PRESSURE ON CASING AND TUBING, RELEASED PACKER AND CASING BURPED OUT KILL FLUID, DISCUSSED WITH DAVID FROM NMOC, HE WANTS TO TRY AND FISH TUBING, SECURED WELL, SHUT DOWN FOR NIGHT, WAITING ON ORDERS

10/22/2024	ARRIVED ON LOCATION, HELD PRE-JOB SAFETY MEETING, H2S EQUIPMENT IN PLACE, WAITING ON CONFERENCE CALL WITH NMOCD, PULLED OUT OF HOLE WITH 2 7/8 L-80 AND PACKER, ORDER TOOLS TO RUN BACK IN HOLE AND MILL ON CASING AND TUBING, OUT OF HOLE WITH 2 7/8" L-*80 AND PACKER, WAITING ON TOOLS TO GET MILLED AT MACHINE SHOP, ETA ON TOOLS IS 4:30, DISCUSSED WITH WILL AND BILL, SECURED WELL SDFN
10/23/2024	ARRIVED ON LOCATION, HELD PRE-JOB SAFETY MEETING, H2S EQUIPMENT IN PLACE, 0# SHUT IN CASING PRESSURE, MADE UP TOOLS AND TRIPPED IN HOLE WITH 4-5/8 CONCAVE MILL. TAGGED ON JNT @ 3273' INSTALLED WASHINGTON HEAD, RIGGED UP SWIVEL, MILLED DOWN WITH NO RESISTANCE, FROM TAG @ 3272' TO TOP OF FISH 3400', STARTED MILLING WITH 2 POINTS ON MILL, TORQUE @ 1200, MILLED DOWN 3' AND STARTED SEEING ABNORMAL SWIVEL TORQUE, MADE 1 MORE FOOT AND STOPPED MAKING HOLE, PULLED OUT OF HOLE WITH 2 7/8 L-80 AND TOOLS TO CHECK MILL, OUT OF HOLE WITH 2 7/8 L-80 AND TOOL, MILL WAS WORN DOWN AND DEEP GROOVES ON THE OUTSIDE OF MILL, SECURED WELL, SHUTDOWN FOR THE NIGHT.
10/24/2024	ARRIVED ON LOCATION, HELD PRE-JOB SAFETY MEETING, H2S EQUIPMENT IN PLACE, 0# SHUT IN CASING PRESSURE, WAITING ON NMOCD TO APPROVE NEXT STEP, GOT APPROVAL FROM NMOCD TO SET CIBP @ +/- 3200', TRIPPED IN HOLE WITH CIBP AND 2 7/8" L-80 TUBING, 20 STANDS IN STARTED DISPLACING MUD OUT CASING, SDFL WAITING ON VAC TRUCK, VAC TRUCK AOL, CONTINUE TRIPPING IN HOLE WITH CIBP AND 2 7/8" L-80, SET CIBP @ 3210', TESTED TO 500 PSI, HELD FOR 30 MINS, CIRCULATED OUT MUD, CIRCULATED WELLBORE CLEAN WITH 87 BBLS TREATED FRESHWATER, 0# SHUT IN TUBING PRESSURE AND 0# SHUT IN CASING PRESSURE, TESTED TO 500 PSI WITH FRESH WATER, HELD FOR 30 MINS, PULLED OUT OF HOLE AND LAID DOWN WITH 2 7/8 L-80 TUBING, SECURED WELL, SHUTDOWN FOR THE NIGHT
10/25/2024	ARRIVED ON LOCATION, HELD PRE-JOB SAFETY MEETING, H2S EQUIPMENT IN PLACE, RIGGED UP ROTARY WIRELINE FOR CBL, OUT OF THE HOLE WITH CBL, RAN IN HOLE TO DUMP BAIL 4 SACKS OF CEMENT, RIGGED DOWN WIRELINE AND PULLING UNIT, CLEANED LOCATION, WELL SECURED, SDFW
10/31/2024	LOADED WELL SUPPLIES AND ROUTED RIG TO LOCATION. MOVED IN AND RIGGED UP P&A RIG. NIPPLED DOWN WELL HEAD AND NIPPLED UP BOP. TRIPPED WORK STRING IN HOLE AND TAGGED FIRST PLUG AT 3178'. SECURED WELL AND SHUT DOWN FOR THE NIGHT.
11/1/2024	ARRIVED ON LOCATION AND HELD PRE-JOB SAFETY MEETING. MOVED UP IN THE HOLE TO 2495' BEFORE ESTABLISHING CIRCULATION FOR BALANCED PLUG, SET PLUG THEN SPOTTED 50 SXS OF CEMENT. TRIPPED OUT OF THE HOLE AND LAID DOWN 10 JOINTS AND STOOD BACK 10 JOINTS AND WAITED ON CEMENT FOR 4 HOURS. TRIPPED IN HOLE TO TAG TOP OF CEMENT AT 2000'. MOVED UP THE HOLE TO 1807' AND ESTABLISHED CIRCULATION FOR PLUG AGAIN. SET PLUG AND SPOTTED 25 SXS OF CEMENT. LAID DOWN AND STOOD BACK ANOTHER 10 JOINTS EACH BEFORE WAITING 4 MORE HOURS ON CONCRETE. TRIPPED IN HOLE AND TAGGED TOP OF CEMENT AT 1540'. MOVED UP IN HOLE TO 975'. SECURED WELL AND SHUTDOWN FOR THE NIGHT
11/2/2024	ARRIVED ON LOCATION AND HELD PRE-JOB SAFETY MEETING. ESTABLISHED CIRCULATION FOR BALANCED PLUG BEFORE SETTING PLUG AND SPOTTED 25 SXS OF CEMENT AT 975'. LAID DOWN AND STOOD BACK 10 JOINTS EACH BEFORE WAITING ON CEMENT FOR 4 HOURS. TIH TO TAG TOP OF CEMENT AT 735'. MOVED UP IN HOLE TO 383'. ESTABLISHED CIRCULATION BEFORE SETTING PLUG AND SPOTTING 50 SXS TO SURFACE. SECURED WELL. RD EQUIPMENT AND MOVED EQUIPMENT AND RIG BACK TO YARD.

11/7/2024	INSTALLED DRY-HOLE MARKER
-----------	---------------------------

Eddy County, NM
API# 30-015-39854

SPUD DATE: 3/2/2012
ELEV: 3,619' GL, 17' KB



Sante Fe Main Office
Phone: (505) 476-3441

General Information
Phone: (505) 629-6116

Online Phone Directory
<https://www.emnrd.nm.gov/ocd/contact-us>

State of New Mexico
Energy, Minerals and Natural Resources
Oil Conservation Division
1220 S. St Francis Dr.
Santa Fe, NM 87505

CONDITIONS

Action 400518

CONDITIONS

Operator: Spur Energy Partners LLC 9655 Katy Freeway Houston, TX 77024	OGRID: 328947
	Action Number: 400518
	Action Type: [C-103] Sub. Plugging (C-103P)

CONDITIONS

Created By	Condition	Condition Date
kfortner	Submit C-103Q within one year of plugging.	11/19/2024
kfortner	DHM set 11/7/24	11/19/2024