

Well Name: POKER LAKE	Well Location: T24S / R30E / SEC 8 / SESW / 32.2267308 / -103.9057135	County or Parish/State: EDDY / NM
Well Number: 59	Type of Well: CONVENTIONAL GAS WELL	Allottee or Tribe Name:
Lease Number: NMLC068431	Unit or CA Name: POKER LAKE INT MORROW	Unit or CA Number: NMNM71016B
US Well Number: 3001524196	Operator: XTO PERMIAN OPERATING LLC	

Subsequent Report

Sundry ID: 2821667

Type of Submission: Subsequent Report

Date Sundry Submitted: 11/08/2024

Date Operation Actually Began: 07/19/2024

Type of Action: Plug and Abandonment

Time Sundry Submitted: 12:19

Actual Procedure: XTO Permian Operating LLC., has P&A'd the above mentioned well per the attached P&A Summary Report and WBD. CBL is also submitted.

SR Attachments

Actual Procedure

XTO_Energy_PLU_059_3001524196_20240909_CBL_20241108121656.pdf

PLU_059_Sbsq_P_A_Summary_Rpt_wWBD_20241108121506.pdf

Well Name: POKER LAKE	Well Location: T24S / R30E / SEC 8 / SESW / 32.2267308 / -103.9057135	County or Parish/State: EDDY / NM
Well Number: 59	Type of Well: CONVENTIONAL GAS WELL	Allottee or Tribe Name:
Lease Number: NMLC068431	Unit or CA Name: POKER LAKE INT MORROW	Unit or CA Number: NMNM71016B
US Well Number: 3001524196	Operator: XTO PERMIAN OPERATING LLC	

Operator

I certify that the foregoing is true and correct. Title 18 U.S.C. Section 1001 and Title 43 U.S.C. Section 1212, make it a crime for any person knowingly and willfully to make to any department or agency of the United States any false, fictitious or fraudulent statements or representations as to any matter within its jurisdiction. Electronic submission of Sundry Notices through this system satisfies regulations requiring a

Operator Electronic Signature: SHERRY MORROW

Signed on: NOV 08, 2024 12:18 PM

Name: XTO PERMIAN OPERATING LLC

Title: Regulatory Analyst

Street Address: 6401 HOLIDAY HILL ROAD BLDG 5

City: MIDLANDState: TX

Phone: (432) 218-3671

Email address: SHERRY.MORROW@EXXONMOBIL.COM

Field

Representative Name:

Street Address:

City:State:Zip:

Phone:

Email address:

BLM Point of Contact

BLM POC Name: JAMES A AMOS

BLM POC Title: Acting Assistant Field Manager

BLM POC Phone: 5752345927

BLM POC Email Address: jamos@blm.gov

Disposition: Accepted

Disposition Date: 11/17/2024

Signature: James A Amos

Poker Lake Unit 059
API 30-015-24196
P&A Summary Report

7/19/24: MIRU. Spot Equip. RU lines from WH to GB pit. Bleed well and SDFWE.

7/22/24: Bd & KW. ND 2-1/16 5K tree. 5K tree secure well and SDFN.

7/23/24: Bd & KW pump 50 down tbg of 10# brine for WC. ND 5K 2-1/16 tree. NU BOPE for CT line. RU Equip to cut CT line. PUH cut 53 CT joints in 40' sections tally 2047' RD Equip. SDFN.

7/24/24: Bd & KW pump 50 down tbg of 10# brine for WC. ND 5K 2-1/16 tree. NU 5k 7-1/16 BOPE+ Annular. Attempt to Rlse Pkr SA w/ no success. RU WLU RIH w/ weight bar tag TOF @2219' POH RD WL. Unload fishing equip and 1" WS tallied pipe and SDFN.

7/25/24: Bd & KW pump 50 down tbg of 10# brine for WC. TIH down 2-3/8 tbg w/ OS OD 1.931- w/ 1-1/2 Nitro grapple tag up on scale @32' down attempt to work thru w/ very little movement decision made TOH Ld OS wait on broach to get to location. Attempt to Rlse SA from Pkr w/ no success. Bleed Off Intermediate to 0. SDFN.

7/26/24: TIH 1.910 Broach, WFJb x 3/4" Rod b (bit size), BS w/1.62" strk, CS Hydrill b x WFJ p (xo) & 71 jts 1" CS Hydrill tbg. Tgd TOF @ 2,228' (tbg POOH & LD 71 jts 1" CS Hydrill tbg & BHA. Pmp dwn 2-3/8" tbg w/15 bbls, flsh @ 2 bpm & 0 psi. SWI. SDFWE.

7/29/24: TIH 1.906 Cut lip w/1.5 Nitro Spiral grapple, 1.906 bowl, 1.900 top sub & 71 jts 1" CS Hydrill tbg. Tgd TOF @ 2,228' (tbg tally depth). Latch fish w/PU weight @ 32k. POOH & LD 71 jts 1" CS Hydrill tbg & BHA to TOF. RU hyd cutters. Start to POOH w/1" coil tbg. Cutting 1,902' of 1" coil w/45 pieces of 1" coil cut ttl @ Avg length of 42' per section. Dress top of coil & install TIW vlv. SWI. SDFN.

7/30/24: Cont. POOH w/1" coil tbg. Cutting 1,841' of 1" coil w/43 pieces of 1" coil cut ttl @ Avg length of 42' per section. total coil left to cut 8,476' Dress top of coil & install TIW vlv. SWI. SDFN.

7/31/24: Cont PUH w/ 1-1/2" CT line cut in average 42' lengths. Dress top of coil & install TIW vlv. SWI. SDFN.

8/1/24: TOH Ld 1-1/2 CT cut at an average 42' sections total cut 83 pieces =3606'.

8/2/24: Cont PUH w/ 1-1/2" CT line cut 22 pieces in 42' sections. RU WL RIH @ 12250 'POH not enough line on spool to get to bottom 14000'. POH RD. Secure well and SDFWE.

8/5/24: RU WL Press test Lub RIH w/ 1.80 GR & JB tag up on solid spot @ 13966' Run CCL 3 jts above didn't show any x-o or nipples down to Pkr depth POH PU Owens jet cutter 1.68 OD cut tbg @ 13966' 6' from pkr POH RD WLU. ND 5K 7-1/16 annular. Press test 7-1/16 5K BOPE to 2900 High and low 250 psi on both pipe and blind rams all tests were good w/ chart . TOH w/ 1 jt 2-3/8 tbg and SDFN.

8/6/24: PUH LD 2-3/8 Production tbg. SDFN.

8/7/24: Cont TOH w/ 2-3/8 tbg. SDFN.

8/8/24: Continue Ld 2-3/8 production tbg 139 jts today total 439=13934.7' tallied. Move out 2-3/8 prod tbg from pipe racks then set in PH-6 WS and tallied PU BHA and consists of 3.75 shoe w/ 3.82 crown OD, upper extension 5.78, Top bushing w/ FN;.95x2-7/8 OD, 2-3/8 regb x 2-3/8 Ph-6 p XO, 3-1/8" OD BS w/ 1.8" stroke, 2-3/8 Ph-6 b x 2-3/8 reg p XO on 68 jts 2-3/8" Ph-6 WS SD. SDFN.

8/9/24: Bd& KW w/ 120 bbls 10# brine. Oper set COFO and test working properly. Move in 2-3/8 PH-6 WS and tally. Continue PU 284 jts 2-3/8 PH-6 WS TOL @ 11,222 tag possible scale @ 11248 26' in liner. PUH out of liner and SDFWE.

8/12/24: MIRU Swivel mill tight spot RD swivel. ND stripper head. TOH w/tbg. SDFN.

8/13/24: TOH w/ 2-3/8 tbg + 3.82 shoe. PU 3-3/4 bit and scraper. TIH w/ PH-6 WS tag TOL @ 11255. Cont TIH to 11292. PUH Ld 2 jts and SDFN.

8/14/24: Cont TIH w/ 3-3/4" bit and scraper tag TOF @ 13962' w/ 436 jts total. TOH w/45 stands 2-3/8 tbg EOT @ 10979' SDFN.

8/15/24: Cont TOH w/343 jts PH-6 tbg and bit/scraper. SDFN.

8/16/24: PU 3-3/4 milling shoe w/ extensions 15'.86 3-1/8 BS, on 174 jts 2-3/8 PH-6. SDFWE.

8/19/24: RIH w/ 2- 3/8 PH-6 tbg. RIH w/352jts to Liner Top @11,500' tagged up set down 4pts come up then work past LT no problems, Pull out of LT never hung up work into LT again RIH w/6jts then rig started to misfire. Secure Well SDFN.

8/20/24: RIH w/ 2- 3/8 PH-6 tbg. RIH w/435jts to Packer tagged up @13,969' get tbg weights then lay down 1jt. Install stripper head rubber then rig up Key PS, Torque up tbg to 2800ft/lbs then drop torque to 2,000ft/lbs for milling ops. Break circulation w/ 70bbls then get circulation rate 1.5bbls @ 800psi. Secure Well and SDFN.

8/21/24: Break Circ. w/ 17bbls Pump rate 1.5bbls/min @700psi Pump bottoms up 47bbls. Get Tbg Weights PU-78K SO-75K then set PS w/ 60rpms w/ 900 free torque. Get on packer and start milling getting good returns all day. Made 6" total. OPull up 1jt then circulate 1.5 bottoms up. Secure Well and SDFN.

8/22/24: Circ. w/ 4bbls Pump rate 1.5bbls/min @800psi. Get Tbg Weights PU-80K SO-78K then set PS w/ 60rpms w/ 1000 free torque. Get on packer and start milling getting good returns. Broke free and well went on vac, packer dropped 2' cont pumping down csg 3bbls/min no psi, make another 1' within 2hrs then no more progress. Start depth 13,969' made hole to 13,972'. Break PS lay it down POOH and lay down 2jts. 1st joint hung up pulled to 100k worked it free then pulled free after that. POOH w/tbg to Derek. 433jts get to BHA. Wait on High wind gusts. Secure Well SDFN.

8/23/24: POOH w/tbg. Pulled 100jtsb then got to shoe, Had 6' fish along with Seal Assy of packer in shoe. Break down BHA Report findings Make up New Flat bottom shoe with Starbright. 1 EXT. TB, LBS then 1 jt PH-6. RIH w/ 200jts 2 3/8 PH-6 tbg. RIH w/ 433jts 2 3/8 PH-6 tbg. Pick up 3jts from racks tag fish w/ 435jts @ 13963' then make tag marks, lay down 3jts. Secure Well SWI SDFWE.

8/26/24: RIH w/ 3jts 2 3/8 PH-6 tbg tag pkr @ 13963' Break Circ 3.0 BPM 200 psi then lost it w/ 500 bbls in total bbls pumped 1250 FW Cont milling w/4-3/4 shoe w/ Starbright. PUH w/tbg. Secure Well SWI SDFN.

8/27/24: Start pumping FW @2.0 BPM 800 psi Tag @ 13964'. Cont milling w/4-3/4 shoe 60- RPM 1000-1500 Torq set 3 pts made approx 2' to 13966 then mill quit cutting decision made to TOH w/shoe TOH w/160 stands 2-3/8 PH-6. SDFN.

8/28/24: Cont TOH w/ tbg. Test BOPE high 3500 low 250 both pipe and blind rams w/ chart all test Gd. TIH w/ #3 3-3/4 OD mill shoe and 151 stands. SDFN.

8/29/24: TIH w/ #3 3-3/4 OD mill shoe and PH-6 WS tag Pkr @ 13966'. Start milling Ops 60-RPM ,900-1500 Torq 600 psi String weight 78 pts put 3 pts on mill start rotating pkr start moving downhole RD swivel and chased down to 14,290'. Ok by BLM to leave in hole. TOH w/ 70 stands. SDFN.

8/30/24 – 8/31/24: Cont TOH w/ PH-6 WS and milling shoe break out BHA. RU WL test Lub to 500 psi failed tighten up bolts and retest Gd test RIH w/ 3.75 GR & JB tag tight spot @ 13644' RU pump flush csg. Cont RIH to a depth of 14260'. POH PU RIH w/ 4-1/2" (3.63) OD Reliance CIBP set @ 14250' POH RD. SDFWE.

9/3/24: RDMO WL equipment. RIH w/ 445 jts 2 3/8" WS. tag CIBP @14250'. SDFN.

9/4/24: Circ 465 bbls SGM to condition hole. Spot 140 sxs class H cmt w/ retarder @14250' – 12480' 1.06 Yld, 16.4#, 42 disp. TOH w/ 35 strands EOT @ 11979' reverse Circ after 10 bbls break circ continue pumping 4 more bbls lost circ again after 24 bbls break. Circ again. Circ 2 more bbls completely lost Circ made decision to pull 11 more strands EOT @ 11274'. SDFN.

9/5/24: TIH tag TOC @ 12428' w/ 388 jts PUH LD 26 jts + 56 jts from derrick EOT @ 11562'. Spot 63 sxs class H Cmt @11562'-11056 1.06 Yld 16.4 # Disp w/ 37.5 bbls PUH 50 stands attempt to reverse Circ 40 bbls w/ no success WOC. Secure well and SDFN.

9/6/24: RIH and tag TOC @ 10,996'. POOH and LD 2 3/8" PH6 WS. Continue to LD 2 3/8" PH6 WS. Secure well. SDFN.

9/7/24: RIH w/ 7" packer and 2.375" L80 EUE. RIH and set packer @ 6713'. PT below packer. Well on vacuum. PT above. Csg holding. Release packer. RIH and set packer @ 8722'. PT below packer. Well on vacuum. PT above. Csg holding. Release packer. RIH and set packer @ 9712'. PT below packer. Well on vacuum. PT above. Csg holding. SDFN.

9/8/24: RIH w/ 7" packer and 2.375" L80 EUE. Set packer @ 10,640'. PT below packer. Well on vacuum. PT above. Csg holding. Release packer. RIH to 10,673'. Set packer. PT csg below packer. 500 psi. Good Test. Hole between 10,640'-10,672'. Release packer and POOH to 3600'. Check for fluid level. POOH. SDFN.

9/9/24: POOH w/ 2 3/8" L80 and 7" pkr. MIRU Ranger WL. PT 7 1/16" 5K WL Flange. RIH w/ RCBL. Tag TOC @ 10,900' WLM. Log from 10,900' to 500'. Wait on BLM orders. RIH 165 stands to 10,484'. Three stands left in derrick. SDFN.

9/10/24: Load and hauled off WS. Load & PT PKR 8.7 bbls/500PKR Leak to 0 psi. Slack off and pull tension one more time to 20k PT to 500 psi PT was good. MIRU cmt pump. Pump 100sxs cmt squeeze. Flush tbg w/41 bbls. 30 Bbls 0 to 500 psi 10 Bbls 500 to 700 psi 1 Bbl 700 to 1000 psi SITP 1000 psi. SDFN.

9/11/24: BO. Release PKR. TIH tag TOC @ 10,490' LD 13 jts. Wait on verification from BLM. Lay down 60 jts. Continued Laying down tbg total LD 103 jts MIRU WL made 2 runs w/ 1-9/16 strip guns. Perforated @ 7500' & 7015'. RDMO WL. RIH w/ 2 stands set PKR @ 7038' attempt circulation. Pump 26 Bbls @ 2 bpm @ 0 to 1000 psi. No circulation. Release pkr attempt circulation @ 2 bpm @ 0 to 1000 psi. Pump 29 Bbls, same result No circulation. Total Bbls pump 55 Bbls. CWI SDFN.

9/12/24: BO. Attempt reverse circulation. pump down 20 Bbls down csg thru perf @ 7015' up perf 7500' caught pressure 500 psi @ 2 bpm, pump 30 Bbls more No circulation. Pump 170 sks cmt, suicide squeeze. 32 total Bbls slurry Flush w/ 27 Bbls + 2 WOC. Load tbg w/ 3 Bbls pressure test cmt to 200 psi. held good. Load csg w/ 20 Bbls w/ BOP open. Close BOP and ER @ .5 bpm @ 0 psi. while monitoring tbg psi on tbg. No pressure lost on tbg. BO. Release PKR POOH w/ 111 stands & jt LD PKR. TIH 30 stands open in. SWI SDFN.

9/13/24: TIH 81 stands PU 6 jts tag TOC @ 7225' w/ 5' out on jt #228. Decision made to perf @ 7225'. POOH w/ 45 stands. Continued POOH. POOH w/ 64 stands. w/ 11 jts left in the hole. SWI and SDFWE.

9/16/24: BO. POOH w/ 5 stands. MU PKR. TIH w/ 19 stands. TIH w/ Pkr set @ 7038'. MIRU WL and Perforated @ 7224' FL @ 680'. RDMO WL. Attempt to EC @ 2 bpm @ 0 psi. Down Csg thru Perf @ 7015' up 7224'. Load csg w/ 25 Bbls at 30 Bbls into it caught, pump 5 more bbls @ 500 psi with a light blow on tbg. Stop & BO csg on a light vac. Attempt down tbg to verify perf were open. Load tbg w/ 2 bbls pump 3 bbls @ 1 bpm @ 200 psi. Stop tbg on a light vac. Got back on csg. Load csg w/ 10 Bbls caught pressure, pump 10 Bbls @ 1 bpm @ 200 psi No Circulation. Csg & Tbg went on a light vac after pumping. SWI SDFN.

9/17/24: Discuss and verify Squeeze ops w/ XOM & BLM Engineers. Pump 30 sxs class H.16.4# suicide squeeze. 7225' - 7125' 100' FOF 3 Bbls Mix Total Bbls 8 Disp. 30.5 Bbls. WOC. Tag TOC @ 7154'. Talk w/ BLM. Good w/ moving forward w/ perf @ 7154' and attempt suicide squeeze after EC. Set Pkr @ 7038'. MIRU WL. RIH w/1-11/16 strip gun w/4 shots to 7154'. FL @ 560' load & pressure up to 500 psi. Perforate @ 7153'. Bottom @ 7154. RDMO WL. Attempt to EC down csg. Top perf @ 7015' up 7154'. Load csg w/ 23 Bbls caught pressure. Pump 12 Bbls @ 1 bpm @ 200 psi unsuccessful. Got on tubing to verify perf. EIR @ 1 bpm @ 500 psi. No Circulation. 4 Bbls total pump down tbg. SWI SDFN.

9/18/24: Attempt to Established Circulation. Pump 50 Bbls down csg down perf @ 7015/ up perf @ 7154'. Load csg w/ 25 Bbls caught pressure. Pump 25 Bbls @ 1.5 bpm @ 500 psi. Unsuccessful. Release PKR TOOH w/ 111 stands LD PKR. TIH w/ 112stands open ended PU 1 jt & 10'- 8' subs to 7153'. Spot 27 sxs cmt. 129 FOF 2.7 Bbls mix 5 Bbls total 27 Bbl flush. CTOC 7025'. At 10 Bbl in well started circulating. Pull 100' above 7015' perf. clear tbg w/ 10 Bbls POOH w/19 stands. SWI SDFN.

9/19/24: BO. Tag TOC @ 7020'. Spot 25 sxs from 7020' - 6900' CTOC 120' FOF 2.6 Bbls Mix 5 Bbls total 27 Bbls Displ. POOH w/ 60 stands LD 20 jts. MIRU Sonic PT BOP. 21 day PT. BOP test good. RDMO Sonic. Laydown remaining tbg. 85 jts. MIRU W.L RIH w/ 3-1/8 perf. gun. Tag TOC @ 6893'. Pull up and perforated @ 4100. POOH. RIH w/2nd 3-1/8 gun & perforated @ 3725'. POOH. RDMO WL. SDFN.

9/20/24: On a 24/64 choke BO to 300 psi. Bullhead csg volume 150 2X #10 KWF. Well stays static for a very short time, then unloads. Orders were to pump 11.2 KWF. Fluid will be delivered in am. SWI SDFN.

9/21/24: Bullhead 150 Bbls 11.2 KWF to 3725' 7" csg. 75 Bbls 400 to 0 psi 75 Bbls 0 psi SIP 0. Monitor well for 30 min. well static. MU Pkr TIH w/ 59 stands and set PKR @ 3750' in between perf 4100' -

3725'. Pump 5 bbls FW & 10 Bbls BW. Well static. Wait on BLM to respond. Squeeze 24 bbls cmt. 15.5 tbg displ. SITP 0 light vac. SICP 50 psi. SWI SDFN.

9/22/24: Bullhead 150 Bbls #10 BW down csg to 3725' with tbg open. Load csg w/ 26 Bbls caught pressure and stabilize @ 1 bpm @ 500 psi. At 50 Bbls in we broke circulation and immediately Shut down pump ops. circulation stop. Close tbg in. SITP 50 psi. Bleed of tbg and resume pump ops w/ tbg open @ 1bpm @ 500 psi w/ a very small drip on tbg. No flow or circulation after resuming pump ops. SIP 500 psi. Monitor csg & tbg. BO csg to 0 psi csg continued to unload fluid. Close csg in w/ tbg open 3hr SICP 220. Tbg no drip or flow. SWI SDFN.

9/23/24: Pump 80 bbls 11.2 KWF to kill well. Well not static. monitor well SICP 60psi. Continued monitoring well. SICP 90 psi SITP 0 tbg open Pump 160 Bbls 11.7 KWF 140 Bbls down csg SIP 270 psi. Bleed & lube till csg static. Release PKR & pump 20 Bbls. SITP 0 & csp 250 psi. Bleed & lube csg till static. Well static. POOH w/ 4 stands. Set Pkr @ 3480' 250' above perf @ 3725. SWI SDFN.

9/24/24: Bleed down casing pressure 7" = 85 psi x 40 mins. Bleed down tubing pressure 2-3/8 = 90 psi x 20 mins. Spot and rig up WL unit. WL BOP, pack off tool and RIH to confirm tag TOC @ 3820'. RD WL & equip. Pump cmt 69 sxs class C 16.25 bbls mix, displace 14.5 bbls SITP 300 psi. SWI, close and lock rams, close all water transfer valves and secure rig equipment. SDFN.

9/25/24: Check well psi, BD press. Unset pkr., balance well formation 11.7#/10# KWF. tag TOC 3,529', LD 10 singles and RIH w/ 5 stands remaining in tubbing board C/O 11.7# KWF w/ 10# KWF 7" csg. capacity/ 2-3/8 tbg capacity= 135 bbls, use vac truck to pull flow back pit and jet out pit. Spot 90 sxs class C CTOC 2991'. LD 17 singles, reverse C/O 14bbls. POOH stand back 5 stands. WOC. Pressure test CMT to 500 psi for 30 mins test good no loss noticeable in pressure. MIRU WL equipment, check for straight voltage. RIH w/ WL to 2980', set charge and perf 4 shots of 1" 1/16 & POOH. Attempt to establish circulation down casing and annulus. Unsuccessful. Pressured up to 1000 psi. SWI, SDFN.

9/26/24: LD 5 singles 2-3/8 EOT 2663'. RU WL, check for straight voltage, set up for perforations. RIH w/WL & perf @2825' & RIH w/WL & perf @2775'. Pump .75 bpm attempting to establish rate @2825' 1200psi with no success. Pump 2bpm, was able to establish rate @2775'. 300 psi after second set of perforations = 10bbls PU 10 single joints to be at 2980'. TOC to spot cement Spot 35sxs of class C @ 2771' LD 18 singles EOT 2409'. Set packer and pump 47 bbls down intermediate casing 9-5/8 out tubing circulating excess cmt out from perfs 2775'. Worked packer up/down to verify clearance. SWI, close all valves and water transfer valves. SDFN.

9/27/24: RIH TTOC 2800'. LD 55 singles=1743'. Set packer 12k tension, pump 12bbls down production string our intermediate string to verify circulation pump 412 sxs class C cmt 62bbls mix, 11.25 displace, 96.82 total bbls slurry mix. Transfer fresh water to tank, transfer cmt powder mix from bulk truck to reservoir containment and release truck. Empty/clean returns from open top pit SWI, close all wellhead valves, lock rams and secure equipment & SDFWE.

9/30/24: Check well pressures, set & V/V CoFo, HP RU WL, RIH TTOC & perf 1335'. POOH & RD WL. Establish injection rate. RD tubing handling equipment, RD rig floor, ND BOP/NU B1 adapter flange for CMT squeeze to surface. Injection test down production casing 7" out intermediate 9-5/8 10 bbls, pmp 393sxs class C cmt to surface, flush lines, close intermediate and leave 500 psi on line. Secure well, RD pump lines. SDFN.

10/1/24: Check pressures, verify level on CMT on surface. RDMO.

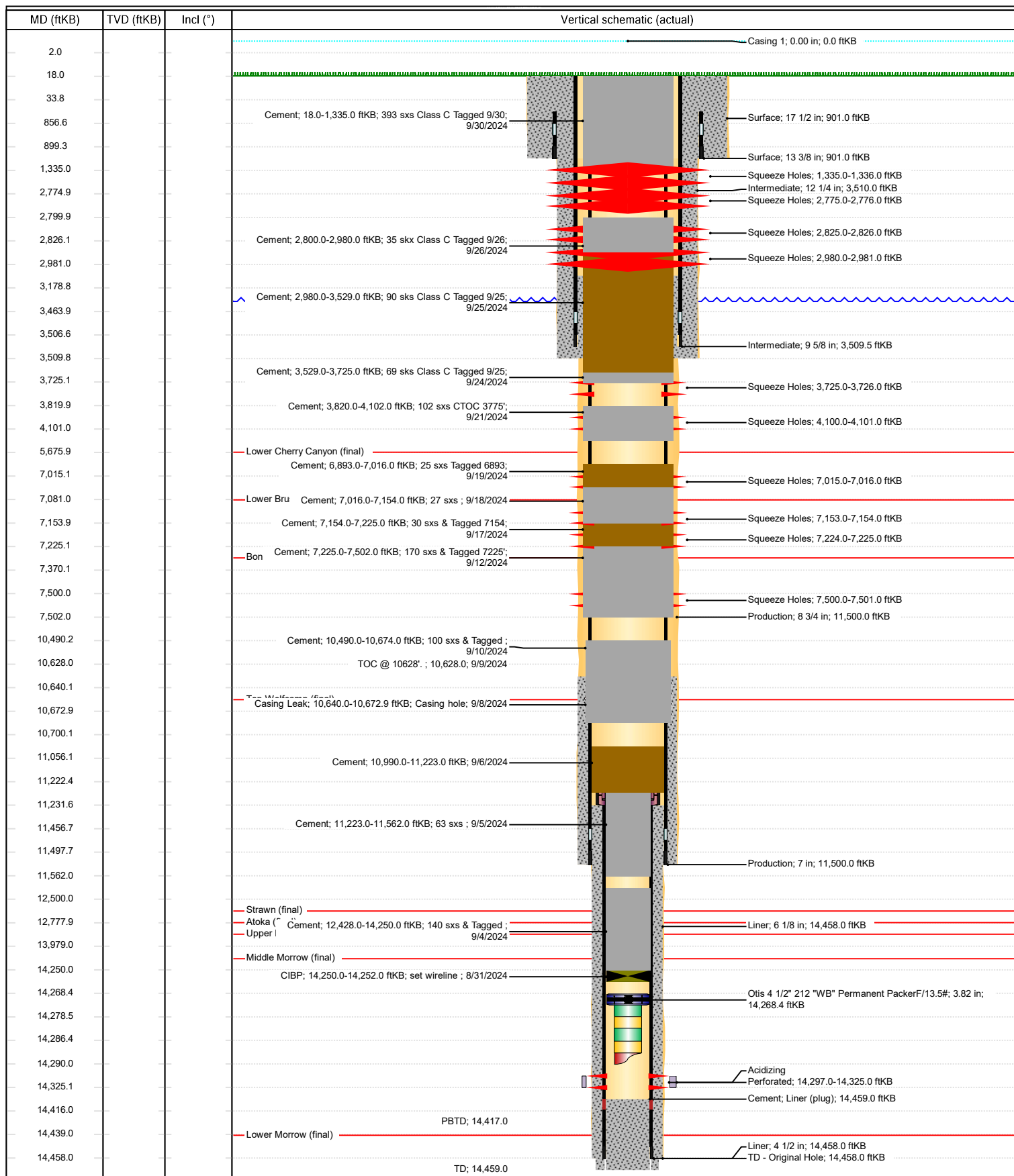
11/01/24: Cut off Wellhead and set DHM.



Schematic - Vertical with Perfs

Well Name: Poker Lake Unit 059

API/UWI 3001524196	SAP Cost Center ID 1136021001	Permit Number	State/Province New Mexico	County Eddy
Surface Location T24S-R30E-S08	Spud Date 7/30/1982 05:30	Original KB Elevation (ft) 3,215.00	Ground Elevation (ft) 3,197.00	KB-Ground Distance (ft) 18.00



Sante Fe Main Office
Phone: (505) 476-3441

General Information
Phone: (505) 629-6116

Online Phone Directory
<https://www.emnrd.nm.gov/oed/contact-us>

State of New Mexico
Energy, Minerals and Natural Resources
Oil Conservation Division
1220 S. St Francis Dr.
Santa Fe, NM 87505

CONDITIONS

Action 404368

CONDITIONS

Operator: XTO ENERGY, INC 6401 Holiday Hill Road Midland, TX 79707	OGRID: 5380
	Action Number: 404368
	Action Type: [C-103] Sub. Plugging (C-103P)

CONDITIONS

Created By	Condition	Condition Date
kfortner	CBL is in files DHM set 11/1/24	11/19/2024