

Santa Fe Main Office

Phone: (505) 476-3441 Fax: (55) 476-3462

General Information

Phone: (505) 629-6116

Online Phone Directory Visit:

<https://www.emnrd.nm.gov/ocd/contact-us/>State of New Mexico
Energy, Minerals and Natural ResourcesForm C-103
Revised July 18, 2013OIL CONSERVATION DIVISION
1220 South St. Francis Dr.
Santa Fe, NM 87505

WELL API NO. 30-039-05667
5. Indicate Type of Lease STATE <input checked="" type="checkbox"/> FEE <input type="checkbox"/>
6. State Oil & Gas Lease No.
7. Lease Name or Unit Agreement Name C P STATE
8. Well Number 001
9. OGRID Number 15501
10. Pool name or Wildcat BALLARD PICTURED CLIFFS

SUNDRY NOTICES AND REPORTS ON WELLS
(DO NOT USE THIS FORM FOR PROPOSALS TO DRILL OR TO DEEPEN OR PLUG BACK TO A DIFFERENT RESERVOIR. USE "APPLICATION FOR PERMIT" (FORM C-101) FOR SUCH PROPOSALS.)

1. Type of Well: Oil Well ☐ Gas Well ☒ Other2. Name of Operator
NANCY WILCOX E QUALLS3. Address of Operator
PO BOX 420 FARMINGTON, NM 87410

4. Well Location

Unit Letter H : 1650 feet from the FNL line and 990 feet from the FEL line

Section 2 Township 24N Range 06W NMPM County RIO ARRIBA

11. Elevation (Show whether DR, RKB, RT, GR, etc.)
6666'

12. Check Appropriate Box to Indicate Nature of Notice, Report or Other Data

NOTICE OF INTENTION TO:

PERFORM REMEDIAL WORK ☐ PLUG AND ABANDON ☐
 TEMPORARILY ABANDON ☐ CHANGE PLANS ☐
 PULL OR ALTER CASING ☐ MULTIPLE COMPL ☐
 DOWNHOLE COMMINGLE ☐
 CLOSED-LOOP SYSTEM ☐
 OTHER: ☐

SUBSEQUENT REPORT OF:

REMEDIAL WORK ☐ ALTERING CASING ☐
 COMMENCE DRILLING OPNS. ☐ P AND A ☒
 CASING/CEMENT JOB ☐
 OTHER: ☐

13. Describe proposed or completed operations. (Clearly state all pertinent details, and give pertinent dates, including estimated date of starting any proposed work). SEE RULE 19.15.7.14 NMAC. For Multiple Completions: Attach wellbore diagram of proposed completion or recompletion.

Pursuant to OCD Order No R-23250 Enduring Resources has been given authorization to plug and abandon the above Nancy Wilcox E Qualls well. Please see attached work summary, wellbore diagram, and pictures.

Spud Date: 4/3/1959

Rig Release Date:

I hereby certify that the information above is true and complete to the best of my knowledge and belief.

SIGNATURE Heather Huntington TITLE Permitting Technician DATE 12/03/24Type or print name Heather Huntington E-mail address: hhuntington@enduringresources.com PHONE: 505-636-9751**For State Use Only**

APPROVED BY: _____ TITLE _____ DATE _____

Conditions of Approval (if any):

CP STATE 001 30-039-05667 P&A WORK SUMMARY

11/12/24- RUWOR. SITP 0 psi. SICP 0 psi. SIBHP 0 psi. NDWH found there was a cap string ran inside of the 2 3/8" prod string. Got cap string broke out. Picked up on cap string. 9 Cap string is 1" NU tbgr. Brake loose rusted up wellhead cap. SIW @ secured well & equipment for the night. Casey Arnett NMOCD rep on location.

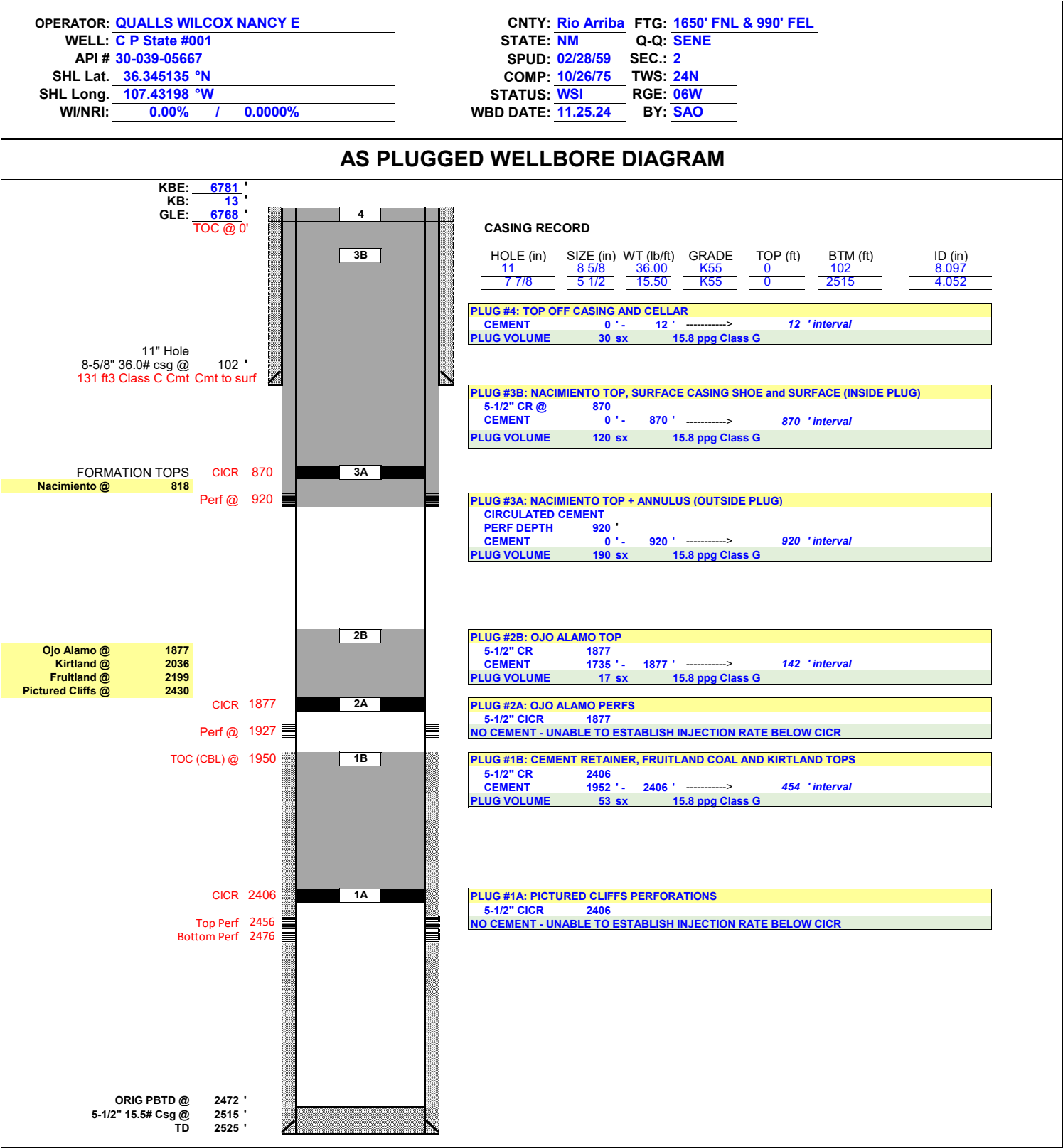
11/13/24-PJSM. SITP 0 psi. SICP 0 psi. SIBHP 0 psi. Service, start & warm up equipment. LD 75 jnt 1" NU cap string, NDWH tried to pull tbgr hanger pull 0-70k hammering on wellhead trying to free tbgr hanger. RU tbgr hanger jack. Pulled 20K on top flange on tbgr hanger jack. Continue tightening down nuts on tbgr hanger jack adding more pressure to tbgr hanger and hammering on wellhead to free tbgr hanger. Got tbgr hanger free. RD tbgr hanger jack. Looked down well. Sheet metal screws were sticking through csg where a patch had been put on the outside of the csg below the wellhead. Got screws cut off. NUBOP. SWI. Secured well for night. Casey Arnett NMOCD rep on location.

11/14/24- PJSM. Service, start & warm up equipment, SICP 0 psi. SIBH 0 psi. PU & MU 5 1/2" csg scraper on 2 3/8" WS. PU & RIH to 2420'. POOH w/ 2 3/8" WS & 5 1/2" csg scraper to surface. PU & MU 5 1/2" CR & RIH to 2406'. Set CR pressure tst 2 3/8" WS to 1000 psi. Sting out of CR & rolled hole w/ 60 bbls freshwater. Pressured up on 5 1/2" csg. got an inj rate 1 BPM @ 260 psi. (failed pressure tst) Sting back into CR Pump plug # 1A pressured up to 1000 psi could not get an inj rate into Pictured Cliffs perf. POOH w/ 2 3/8" WS & setting tool. Ran CBL from 2396' to surface. TOC 1940'. RIH 2 3/8" tag sub on 2 3/8" WS to 2406'. Pump plug #1B to cover CR top, Fruitland & Kirtland formation tops. inside balance plug 2406'-1952' (454' plug). Mix & pump 53 sxs 10.8 bbls 15.8 ppg class g cmt down 2 3/8" tbgr. Disp w/ 7.5 bbls freshwater. LD 14 jnts 2 3/8" WS to 1952' rev clean. POOH w/ 10 stands 2 3/8" WS to 1323'SWI. Secured well. Drain up equipment. Prep to tag plug 1B in the morning. Thomas Vermersch NMOCD Rep on location.

11/15/24- PJSM. SITP 0 psi. SICP 0 psi. SIBHP 0 psi. Service, start & warm up equipment. RIH tag plug #1B TOC @ 1952' (84' above Kirtland top @ 2036') good tag. LD 2 3/8" WS to 1827'. POOH 2 3/8" tag sub standing tbgr back in derrick. RIH perf 5 1/2" csg @ 1927' Ojo Alamo formation. RIH w/ 5 1/2" CR set @ 1877'. Pressure tst 2 3/8" WS to 1000 psi. Sting out of CR load hole w/ 2 bbls freshwater. Sting into CR pump down 2 3/8" WS pressured up to 1000 psi no inj rate. Sting out of CR Pump plug #2 to cover Ojo Alamo formation top. inside balance plug 1877'-1727' (150' plug). Mix & pump 17 sxs 3.5 bbls 15.8 ppg class g cmt dwn 2 3/8" WS. Disp w/ 6.6 bbls. LD 6 jnts 2 3/8" WS to 1670'. POOH w/ setting tool to surface standing tbgr back in derrick. RIH w 2 3/8" tag sub to 1292'. RIH tag Ojo Alamo plug #2 @ 1735' (142' above Ojo Alamo formation top @ 1877') LD 26 jnts to 916'. POOH w/ 2 3/8" tag sub. SWI. Secured well. Drain up & secure equipment for weekend. Thomas Vermersch NMOCD Rep on location.

11/18/24- PJSM. SICP 0 psi. SIBHP 0 psi. Service, Start & warm up equipment. RIH w/ 3 1/8" 4 SPF perf gun. Shot 5 1/2" csg @ 920'. RIH w/ 5 1/2" CR set @ 870'. Sting out of CR load hole w/ 7 bbls freshwater. Sting into CR. Started pumping down 2 3/8" WS started to get return up 5 1/2" csg. Shut in 5 1/2" csg started to get returns up 8 5/8" SC circ 30 bbls to cln up well. Pump plug #3A to cover Nacimiento. 8 5/8" SC shoe & 8 5/8" Ann. Mix & pump 190 sxs 38.9 bbls 15.8 ppg class g cmt down 2 3/8" WS below CR up 8 5/8" SC. started to get cmt dirty water back plugged up 7 lost circ. Sting out of CR Pump plug 3B to cover Nacimiento formation top & fill 5 1/2" csg to surface. Mix & pump 117 sxs 23.9 bbls 15.8 ppg class g cmt dwn 2 3/8" WS filling 5 1/2" csg to surface. LD 2 3/8" WS to surface. Top

off 5 1/2 csg w/ 3 bbls .6 bbls class g cmt. RD work floor. NDBOP & wash out. NUWH. WOC. tag TOC in 5 1/2 csg @ 2'. Cut off wellhead, Tag TOC in 8 5/8 SC @ 12'. weld on P&A marker. RDWOR. Topped off casings & wellhead cellar w/ 30 sxs 6.1 bbls class g cmt. Drain up & RD cmt package. Thomas Vermersch NMOCD Rep on location. WELL IS PLUGGED.



My Location



Drop Pin



More

Details

Address

Cuba, NM 87013
United States



Coordinates

36.34514° N, 107.43198° W



Report Something Missing

















Sante Fe Main Office
Phone: (505) 476-3441

General Information
Phone: (505) 629-6116

Online Phone Directory
<https://www.emnrd.nm.gov/ocd/contact-us>

State of New Mexico
Energy, Minerals and Natural Resources
Oil Conservation Division
1220 S. St Francis Dr.
Santa Fe, NM 87505

CONDITIONS

Action 408240

CONDITIONS

Operator: ENDURING RESOURCES, LLC 6300 S Syracuse Way Centennial, CO 80111	OGRID: 372286
	Action Number: 408240
	Action Type: [C-103] Sub. Plugging (C-103P)

CONDITIONS

Created By	Condition	Condition Date
loren.diede	None	12/4/2024