

Submit 1 Copy To Appropriate District Office
 District I - (575) 393-6161
 1625 N. French Dr., Hobbs, NM 88240
 District II - (575) 748-1283
 811 S. First St., Artesia, NM 88210
 District III - (505) 334-6178
 1000 Rio Brazos Rd., Aztec, NM 87410
 District IV - (505) 476-3460
 1220 S. St. Francis Dr., Santa Fe, NM 87505

State of New Mexico
 Energy, Minerals and Natural Resources

Form C-103
 Revised July 18, 2013

OIL CONSERVATION DIVISION
 1220 South St. Francis Dr.
 Santa Fe, NM 87505

WELL API NO. 30-045-30922
5. Indicate Type of Lease STATE <input type="checkbox"/> FEE <input type="checkbox"/>
6. State Oil & Gas Lease No.
7. Lease Name or Unit Agreement Name Pretty Lady 30 11 34
8. Well Number #1
9. OGRID Number 247130
10. Pool name or Wildcat SWD, MV

SUNDRY NOTICES AND REPORTS ON WELLS
 (DO NOT USE THIS FORM FOR PROPOSALS TO DRILL OR TO DEEPEN OR PLUG BACK TO A DIFFERENT RESERVOIR. USE "APPLICATION FOR PERMIT" (FORM C-101) FOR SUCH PROPOSALS.)

1. Type of Well: Oil Well ☐ Gas Well ☒ Other Salt Water Disposal

2. Name of Operator
 Agua Moss, LLC

3. Address of Operator
 PO Box 600 Farmington, NM 87499

4. Well Location
 Unit Letter J : 1760 feet from the South line and 1475 feet from the East line
 Section 34 Township 30N Range 11W NMPM San Juan County

11. Elevation (Show whether DR, RKB, RT, GR, etc.)
 5789" GL

12. Check Appropriate Box to Indicate Nature of Notice, Report or Other Data

NOTICE OF INTENTION TO:		SUBSEQUENT REPORT OF:	
PERFORM REMEDIAL WORK <input type="checkbox"/>	PLUG AND ABANDON <input type="checkbox"/>	REMEDIAL WORK <i>Acid Job</i> <input checked="" type="checkbox"/>	ALTERING CASING <input type="checkbox"/>
TEMPORARILY ABANDON <input type="checkbox"/>	CHANGE PLANS <input type="checkbox"/>	COMMENCE DRILLING OPNS. <input type="checkbox"/>	P AND A <input type="checkbox"/>
PULL OR ALTER CASING <input type="checkbox"/>	MULTIPLE COMPL <input type="checkbox"/>	CASING/CEMENT JOB <input checked="" type="checkbox"/>	
DOWNHOLE COMMINGLE <input type="checkbox"/>			
CLOSED-LOOP SYSTEM <input type="checkbox"/>			
OTHER: <input type="checkbox"/>		OTHER: <input type="checkbox"/>	

13. Describe proposed or completed operations. (Clearly state all pertinent details, and give pertinent dates, including estimated date of starting any proposed work). SEE RULE 19.15.7.14 NMAC. For Multiple Completions: Attach wellbore diagram of proposed completion or recompletion.

Please see the attached workover & casing repair operations completed on April 9th, 2021

Spud Date:

Rig Release Date:

I hereby certify that the information above is true and complete to the best of my knowledge and belief.

SIGNATURE  TITLE HSE & Regulatory Compliance Spec DATE 5/5/2021

Type or print name Philana Thompson E-mail address: pthompson@merrion.bz PHONE: 505-486-1171

For State Use Only

APPROVED BY: _____ TITLE _____ DATE _____

Conditions of Approval (if any): _____

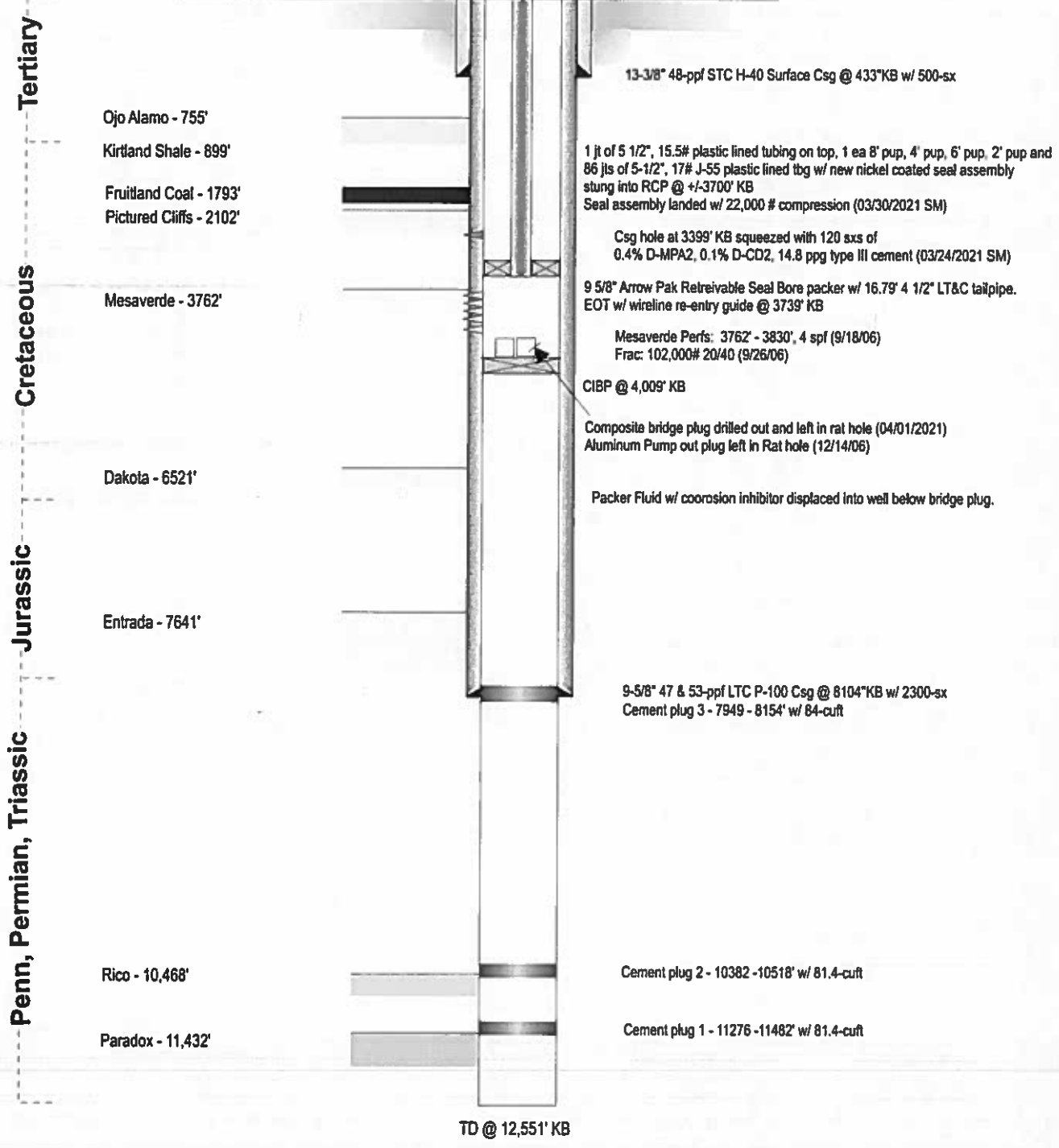
Agua Moss LLC
Wellbore Schematic
Pretty Lady 30-11-34
Current Wellbore Configuration

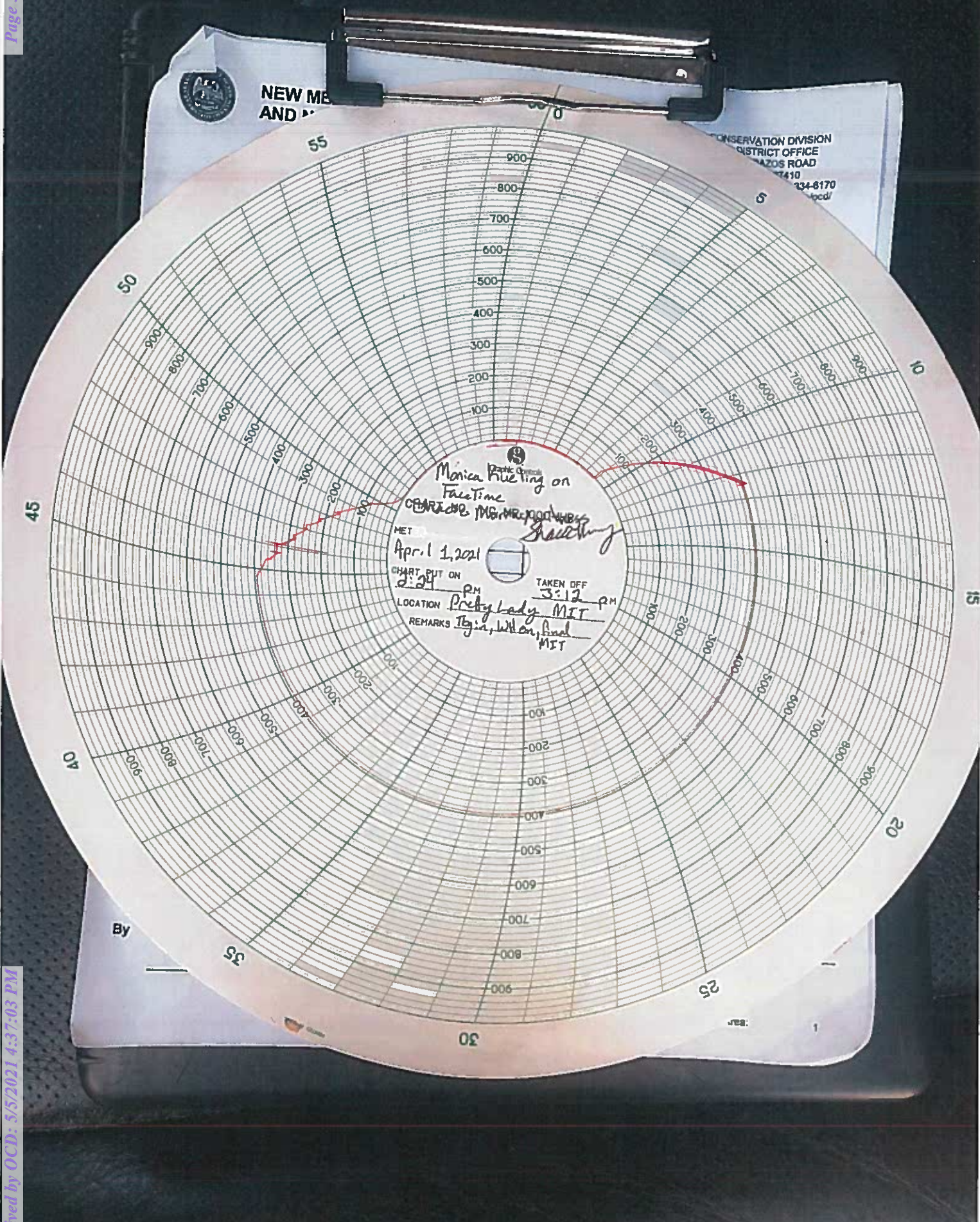
Location: 1760' fsl & 1475' fel (nw se)
Sec 34, T30N, R11W, NMPM
San Juan Co, New Mexico

Date: April 5, 2021

Elevation: 5789' GL
5802' RKB

Injection Zone: Mesaverde
Prepared by: Connie Dinning
Updated by: Shacie Murray





NEW MEXICO
AND

CONSERVATION DIVISION
DISTRICT OFFICE
AZAS ROAD
410
334-8170
lpcd/



NEW MEXICO ENERGY, MINERALS
AND NATURAL RESOURCES DEPARTMENT

OIL CONSERVATION DIVISION
AZTEC DISTRICT OFFICE
1000 RIO BRAZOS ROAD
AZTEC, NM 87410
(505) 334-6178 FAX: (505) 334-6170
<http://www.emnrd.state.nm.us/ocd/>

BRADENHEAD TEST REPORT
(Submit 2 copies to above address)

Date of Test 4/1/21 Operator Agua Moss API # 30-045-30922
Property Name Praty Lady 30 11 34 4 001 Location: Unit 5 Section 34 Township 30N Range 11W
(Well Name and Number)
Pressure (Shut-in or Producing) Tubing Inj Intermediate N/A Casing SI Bradenhead SI

OPEN BRADENHEAD AND INTERMEDIATE TO ATMOSPHERE INDIVIDUALLY FOR 15 MINUTES EACH

Time	Bradenhead			Intermediate			Bradenhead Intermediate	
	BH Blowdown	Casing Monitor	Intermediate Monitor	Intermediate Blowdown	Casing Monitor		Flowed	Flowed
5 minutes	0	0				Steady Flow		
10 minutes	0	0				Surges		
15 minutes	0	0				Down to Nothing		
20 minutes						No Flow		
25 minutes						Gas		
30 minutes						Gas and Water		
5 minute SI	0	0				Water		

If bradenhead flowed water, check all of the descriptions that apply below:

Clear _____ Fresh _____ Salty _____ Sulfur _____ Black _____

5 Minute Shut-in Bradenhead 0 Intermediate N/A

REMARKS:

No pressure, No blow, csg stayed at 0.

By Shacie Murray
Engineer
(Position)

Witness _____

NMOCD Test Area:

PRETTY LADY 30-11-34 No. 1

February 6, 2021

Work Detail Tbg & Csg: 1040 psig. BH: 0 psig. MIRU Blue Jet Wireline 2/5/21. Remove wellhead shelter. RIH w/ 3.68" OD junk basket. Tag up @ 3,899' KB (69' rat hole). PU Weatherford 4-1/2" composite bridge plug (3.5" OD). RIH set bridge plug in lower 4-1/2" x 8' pup jt (3,723' KB). Come out of hole and LD setting tools. Bled tbg off to 0 psig. Bled csg off to a small drip. Pressure tested the tubing to 1600 psig with pressure washer. Tbg held for 2 hrs. Csg rose to 200 psig. Pumped on csg for 1 hr., couldn't get over 1120 psig. SD and pressure stabilized at 1040 psig. Pumped 1000 gals of water total. Bled casing and tubing to 0 psig. SI well and bled off periodically throughout the night. The next day, the csg rose to 500 psig after 1 hr. and up to 1000 psig after 2-3 hrs. Csg was up to 1040 psig by noon. Tbg still 0 psig. (R.Merrion/J. Davis)

February 10, 2021

Work Detail Tbg: 0 psig; Csg: 1040 psig; BH: 0 psig. MIRU Blue Jet wireline. Bled casing down to 500 psig. RIH w/ acoustic tools, got on depth with composite plug @ 3,722' KB. Opened up casing to vac tank. Casing started flowing harder after about 10 min. Ran acoustic log up through the packer to 3,280' KB. High noise mV output at 3,399' KB. Most likely a casing hole at this interval. SI casing and TOO H w/ WL and LD tools. RDMOL w/ WL. Tbg: 0 psig; Csg: 1040 psig; BH: 0 psig. SD to determine path forward. (R.Merrion/J. Davis)

February 23, 2021

Work Detail MIRU Hurricane Rig #17 on 2-22-2021, spot equipment, test mud pumps. ND WH, Tbg spool required 20k # to pull, donut moved up about an inch. Bled off backside to vac tank, removed spool. Attempt to pour sand down tbg but it kept plugging off. RU and test BOP. PU 5.5" pup, attach TIW and kellyhose, sting into donut (cleaned up threads), pull up ~40'. RU A Plus pump truck, establish injection at 1,000 psi and approx. 2 bbls per minute. Mix and inject 15.5 sacks of playground sand (11' of sand), displace with 80 bbls fresh including 5 gallons biocide and 5 gallons scavenger. RD pump truck, leave well SI overnight.. (S. Murray/J. Davis)

February 24, 2021

Work Detail Lower injection string and tag top of sand at 12', pull string back up to ~40'. Mixed 327 bbls mud, 14.3 ppg consisting of 1024 sxs bar, 52 gel, 3 desco, 2 soda ash, 1 caustic. Pumped ~290 bbls down tbg to circulate, returns were water cut, heaviest returns were 9.4 ppg. Csg has 290 psig. SD and wait for more mud mix, leave well SI. (S. Murray/J. Davis)

February 25, 2021

Work Detail Show up and tbg 0 psig, csg 300 psig. Mix ~250 bbls of 14.3 ppg mud. Circulate mud while maintaining 300-350 psig on csg and attempting to match mud pumped with returns. See chart. Pumped 203 bbls, had 177 bbls returned, 26 bbls lost. Gas in returns at ~130 bbls pumped, near bottoms up. Continue to circulate and hold back pressure. Csg pressure dropped to 0. Secure location, SI well. (S. Murray/J. Davis/R. Davis)

PRETTY LADY 30-11-34-1**Page -2-**

Pumped Mud	TBG Pressure	CSG Pressure	Returns inches - bbls - Gains bbls			
10	0	300	10	34		
10		300	14	51	17	10 ppg returns
10		300	17	64	13	
10		300 - 350	18	68	4	10.9 ppg returns
10	250	350	21	81	13	
10	150	300	23	90	9	
10	0	250	26	103	13	Stop pumping, check SI pressure - 250 psig
10		250	29	116	13	11 ppg returns
10	200	500 - 450	30	120	4	
10	250	450 - 400	32	129	9	
10		400	34	137	8	
10		450				
10		350	37	150	13	Gas in returns
10	0	350	40	163	13	Gas in returns
10	150	350	40.5	166	3	
3	200	250 - 400	40.5	166	0	
10		200	45	187	21	13 ppg returns
40		75 - 0	50	211	24	12.8 ppg returns
203					177	

February 26, 2021

Work Detail Tbg 0, Csg 75 psig. Bled down csg, had 1/4" stream to 1/8" to no flow. RU mud pit to gravity feed csg while tripping. RU csg crew and TOO H with 64 jts when tbg started to flow. Problem is 14.6 ppg mud was replacing metal displacement causing a U-tube with the 14.3 ppg mud in well. RU kelly hose and pump 11 bbls down tbg to balance well. TOO H w/ remaining 16 jts and seal sub, 3701' total injection string. RD csg crew, change over BOP pipe rams to 2-7/8". PU 2-7/8" 6.5# N-80 work string and TIH w/ 109 jts to 3447'. Secure location, SI well, and SDON. (S. Murray/J. Davis/R. Davis)

February 27, 2021

Work Detail Tbg 0 psig, csg on vac. Top off csg w/ 1 bbl. RU cement pump truck. TOO H w/ 21' to EOT @ 3426' KB. Establish injection rate at 1.5 bbls per minute at 1200 psi. Mix 100 sacks of class G, 15.8 ppg, 1.15 yield cement (11.9 bbls mix, 20.5 bbls slurry), finish pumping at 9:35 am. Displace with 17 bbls mud. TOO H w/ 12 jts, EOT at 3068' KB. Reverse circulate 30 bbls, had some cement returns but cleaned up. Cement was like jelly. Start squeeze, was able to pump 2 bbls and it locked up at 2200 psig. Left pressured up for 5 hours. Bled pressure off and TOO H. PU 8-3/8" bit, sub, crossovers, 4 ea. 3.5" drill collars, and 46 stands. Estimated TOC at 3159' KB. Secure location, SI well, SDON. (S. Murray/J. Davis/R. Davis)

February 28, 2021

Work Detail Tbg/Csg 0 psi. TIH w/ 8 jts and tag TOC at 3272.5' KB, 153.5' cement in csg, 139.5' of cement above hole, 166.7' cement behind pipe. Reverse circulate and start drilling, at about 8' down returns were very thick. Circulate lighter mud around, return to drilling out. Drill a total of 115' to end with 25' of cement above hole. LD 1 jt and secure location, SI well, SDON. (S. Murray/J. Davis)

March 2, 2021

Work Detail Tbg/csg 0 psig. Drilled 19', at 3400'KB returns increased, bottoms up showed black water, getting 1.5 bbls at 1000 psi just like original hole. Total drilled to 3406' KB. Weighted up mud and circulate annulus volume 220 bbls then bullhead tbg volume 20 bbls to balance well. Secure location and SI overnight. (S. Murray/J. Davis)

March 3, 2021

Work Detail Bar had fallen out of mud causing issues, waited on more bar. Mixed and circulated a total of 224 bbls down csg, bullheaded 26 bbls down tbg. Well balanced, secure location and SDON. (J. Davis)

March 4, 2021

Work Detail TIH to 3405' KB and circulate mud. RU cement truck and circulate 21 bbls of fresh down tbg, establish injection with 3 bbls at 1150 psig. Close csg, mix and pump 85 sxs, 10 bbls mix, 17.4 bbls slurry, 1% CaCl, 15.7 ppg cement, ended at 10:27 am. Open csg, displace w/ 17.5 bbls mud, watch plug equalize. TOO H w/ 14 jts (5 jts above highest possible TOC being 3165', EOT 2974'). Open csg, reverse circulate 36 bbls mud, circulation started at 3.5 bbls, cement seen at 30 bbls cleaned up by 35 bbls. Close csg, pump 6.5 bbls at 11:33 am no pressure. Pump 1 bbl at 12:03 pm, no pressure. Pump 1 bbl at 12:38 pm, no pressure. Pump 1 bbl at 1:42 pm, no pressure. Abandon squeeze attempt by pumping 10 bbls, never caught pressure. TIH with 8 jts and break circulation with mud, TIW w/ 6 jts and break circulation, EOT at 3398' KB. Circulate 20 bbls of fresh down tbg; establish injection with 6 bbls at 1150 psig. Close csg, mix and pump 130 sxs, 15.5 bbls mix, 26.6 bbls slurry, 1.5% CaCl, 15.7 ppg cement, ended at 5:14 pm. Open csg, displace w/ 17.5 bbls mud, watch plug equalize. TOO H w/ 16 jts (4 jts above highest possible TOC being 3041', EOT 2910'). Open csg, reverse circulate 32 bbls mud, circulation started at 2 bbls, cement seen at 28 bbls cleaned up by 30 bbls. Close csg, pump 7 bbls at 6:31 pm, pressured up to 1600 psig in last bbl. Bump pressure to 2000 psi with 0.5 bbl at 6:49 pm. Bled pressure off, returned 1 bbl, pressured back up to 2000 psig with 1 bbl at 6:50 pm. Bump pressure to 2250 psig with minimal mud at 6:58 pm. Est. 9.5 bbls behind csg, 16.1 bbls in csg, est. TOC at 3178' KB. Hold pressure overnight. Monitored BH and had 0 psi. Secure location, SI well. Will hold pressure through Thursday and return to drill out on Friday. In total, estimated 8.2 bbls behind csg on 1st squeeze, 15.4 bbls pumped away on 2nd squeeze, 9.5 bbls behind csg on 3rd squeeze. (R. Davis/S. Murray/J. Davis)

March 5, 2021

Work Detail At 6 am well had 2125 psig (WH gauge). Last night the pump truck gauge was 2250 psig. 125 psi lost. (J. Davis)

March 6, 2021

Work Detail tbg 0, csg 1225 psig. Bled off and TIH 12 jts and 8' of jt #105, TOC at 3298' KB. Being 101' above hole, 120' deeper than expected, about 18.2 bbls behind csg. TOO H, PU bit and collars TIH and drill 77', leaving 24' above hole. Secure location and SD over weekend. (S. Murray/J. Davis)

March 9, 2021

Work Detail Continue drilling, about 6' below hole hit a gas/produced water pocket, SI but didn't build pressure. Circulate and continue drilling. About 16' below hole hit another small pocket, continue drilling. Hit fluid and pressure about 17' below hole. 1000 psig, 1 bbl per minute injection rate. SI well. 12' of cement left to drill, EOT 3416' KB. Issue with pipe ram on BOP, new accumulator sent out. (S. Murray/J. Davis)

March 10, 2021

Work Detail Mix 14.3 ppg mud, bullhead down csg then tbg to balance well. Start drilling out remaining cement. Well is drinking about 1 bbl per minute of mud. Stop drilling and circulate bottoms up to clear tbg of cuttings. SI well, need to mix more mud. Secure location, SDFN. (S. Murray/J. Davis)

March 12, 2021

Work Detail Drilled out 20' on jt 105 (12' deeper than expected), drilled through some stringers. Continued to TIH, had cement stuck in valve and pump issues. Tag top of sand at 3680' KB (8' higher than expected), drilled down 2' and circulated bottoms up. TOO H stand back collars, LD bit, PU scraper and TIH. Blocks outrunning the pipe, tbg floating in hole, mud flowing through tbg as it falls. Worried about well control with the scraper piston down/swabbing up mud while tripping and not having enough mud on location to keep up. TOO H, LD scraper. Replace 11" stripping head with 5" flange for wireline tomorrow. Secure location, SI well, SDON. (S. Murray/J. Davis)

March 13, 2021

Work Detail RU wireline, run cement evaluation log (CBL) and csg inspection log (magnetic ID and thickness). CBL showed minimal and channeled bond. Magnetic tool showed varied ID, thickness tool does not work in ≥ 0.5 " thick metal, where the 57.5# pipe is. RD wireline, secure location, SI well. Send log to OCD and await next step. (S. Murray/R. Merrion)

March 23, 2021

Work Detail 110 psig on csg. Mix and pump 40 bbls of 14.3 ppg mud when csg pressured up. Bled off pressure and TIH w/107 jts, SN and coupling at end. Circulate bottoms up, TIH w/1 more jt, EOT at 3416.8' KB. Circulate for 20 minutes but pump gunked off. Transfer mud in pit to mix, cleanout pump, start circulating again. Losing about a bbl a minute in mud, shut down circulating. Test injection rate, 1/4 bbl per minute at ~400 psig. TOO H w/9 jts, secure location, SDON. Will squeeze in morning. (S. Murray/J. Davis)

March 24, 2021

Work Detail: TIH w/108 jts, 16' out on jt #108, EOT 3401' KB. Pump 15 bbls of fresh down tbg to establish injection at 1.6 bpm at 550 psig. Mix and pump 120 sxs, 19 bbls mix (6.63 mix ratio), 29 bbls slurry, 0.4% D-MPA2, 0.1% D-CD2, 14.8 ppg, pumped at 1000 psi, started at 10:30 ended at 11:11 PM. Displace w/2 bbls water and 15 bbls mud to balance plug. TOO H w/16 jts, 90 jts in hole, above highest possible TOC being 2997' KB, EOT 2847' KB. Attempt to reverse circulate at 12:08 PM, pumped 4 bbls away with no blow on tbg, worried tbg is plugged. Hook up to tbg and able to pump through with water, had csg closed and started pumping squeeze. At 12:38 pumped 7 bbls away from 400 psi build to 540 psi, hesitate. At 1:02 pumped 0.5 bbls away from 460 psi build to 800 psi break over to 493 psi and stop to hesitate. At 1:21 pumped 1 bbl away from 501 psi build to 800 psi, hesitate. At 1:40 pumped 0.5 bbl away from 635 psi build to 1200 psi, csg 600 psi, hesitate. At 2:11 pumped 0.25 bbl from 1125 psi build to 1515 psi, hesitate. At 2:31 pressured up from 1524 psi to 1755 psi, 0 volume pumped, csg 1280 psi. At 2:40 pressured up from 1755 psi to 2045 psi, csg 1500 psi. Monitored BH pressure, remained 0 psi throughout job. Pumped a total of 13.25 bbls behind csg (237'), 15.75 bbls still inside (215'), should tag on jt #101. Secure location, SD. Will drill out on Thursday. (S. Murray/J. Davis)

March 26, 2021

Work Detail Csg 1150 psig, down from 1500 psig two days ago. TIH w/2 jts, 63', 2910' KB and tag cement (what was pumped out of tbg because we were not able to reverse circulate post pumping cement). Circulate out mud, should have been 200 bbls but got 300 bbls of water cut mud back 11-13 ppg. TOO H PU bit, subs, collars and TIH. Hit stringers on jt # 90 at 2965' KB got into cement, drilled through at 2980' KB. Circulating out large cuttings ~1.5" and mud. Tagged TOC at 3096' KB, 304' cement in csg being 22 bbls meaning 7 bbls made it behind pipe being 125' outside. Drilled to 3166' KB, 234' left to drill. Secure location, SDFN. (S. Murray/J. Davis)

March 27, 2021

Work Detail Continue drilling, spotty cement from 3134' to 3324' KB, void around 3197' KB, cement seemed only to be on edge of pipe. Hit solid cement at 3324' KB and drilled through at 3423' KB, good returns, circulated bottoms up. RU chart meter for MIT. Facetimed Monica Kueling with OCD during MIT, pressured up to 518 psig and held steady through 30 minute test, BH 0 psi throughout test, emailed chart to OCD. TIH to 8' of jt #113, 3680' KB, tagged sand and circulated bottoms up. LD a jt, stand back 2 stands. Secure location and SDFN. (S. Murray/J. Davis)

March 28, 2021

Work Detail Tbg/csg 0 psig. TOO H and PU bit and scraper, TIH hanging up at the beginning then running smooth. Tag at 3' in on jt # 117, 3668' KB. Hard crust on top of sand, RU kelly and slowly rotate, clean out down to packer at 3700' KB. Got sand, chunks of mud, and some produced water in returns, circulate bottoms up. TOO H LD scraper, PU notch collar, 2 ea. 2-3/8" jts, 115 ea. 2-7/8" jts, and 12' of #116 to reverse circulate and clean out at 3723' KB top of the plug. Reverse circulate fresh water around, 2 hrs at ~2.6 bbls/min, ~300 bbls to clean returns. BH at 0 psi, SI for test possibly Monday. TOO H and LD pipe. Secure location and SDFN. (S. Murray/J. Davis)

March 30, 2021

Work Detail Swap out work string for new 5-1/2", 17#, J-55, LTC w/ internal plastic coating injection string. RU csg crew and TIH with 88 jts to tag packer and mark distance for pups. Need 19' but only have even length pups, dig out old jt which was 40.20' long with a 20' pup makeup. Final injection string is new seal assembly, 86 jts of new 5-1/2" 17# J-55, 1 ea. 2' pup, 6' pup, 4' pup, 8' pup, and 1 jt of old 5-1/2" 15.5#. Landed in packer at 3703' KB, set with 22,000# of compression. Circulate 5 gals of biocide, 15 gals of corrosion inhibitor, 1 gal scale inhibitor down backside. Secure location and SDFN. (S. Murray/J. Davis)

March 31, 2021

Work Detail Pressure test 9-5/8" and 5-1/2" annulus to 500 psi, held good. ND BOP and return, install new 4-1/16" 5K master valve, BOP with blind rams and 2-3/8" pipe rams, spool, single BOP with 2-7/8" pipe rams, spool, 3k annular BOP, stripping head. Set rig floor at 16'. Unload work string and tally. Test BHA and TIH w/ 3-7/8" mill, mud motor, dual flappers, x-sub, F-nipple, 2 ea. 2-3/8" jts, x-sub, and 115 jts 2-7/8". Tag at 16' in on jt #115 being 3713' KB, pull up and tag again at 3724' KB with 4.8' of jt #115 out, put 4k down, tagging composite plug. Install TIW and pull jt up, secure location and SDFN. (S. Murray/J. Davis)

April 1, 2021

Work Detail PU 10' sub and swivel, circulate 80 bbls of 13.4 mud around. Drill out composite plug and push end through bottom of tbg. TOO H w/ 113 wet jts when well started to flow, TOO H w/ remaining 2 jts, 2 jts 2-3/8 and BHA. SI well, clean up mud motor. ND BOP, install flange on csg valve and flow back the rest of the mud. SI well, secure location. (S. Murray/J. Davis)

April 2, 2021

Work Detail NU WH and RD rig. Clean everything up and return all rentals. RU chart meter for MIT. Facetimed Monica Kueling with OCD for BH and MIT tests. Completed BH Test, BH had no flow and no pressure throughout test, csg stayed at 0 psig throughout test, tbg stayed at 950 psig throughout test. Completed MIT, pressured up to 398 psig and fell slightly for 12 minutes to 390 psig but steadied out for the remainder of the 30 minute test, BH 0 psig throughout test, tbg 950 psig throughout test, emailed chart to OCD. RD chart recorder. RU welders to adjust injection pipe. Shut down check on pumps will be witnessed by Monica Kueling on Friday at 10:30 am then injection will begin. (S. Murray/J. Davis)

April 9, 2021

Work Detail Injecting with 1 pump on at 1,000 psig, SD pump and RU spec truck. Pump 1,360 gallons of 15% HCL, 13 gallons each of MCA-80 (mud solids dispersant and demulsifier), HFG-626 (silicate scale dissolver), and CAS-94 (corrosion inhibition, iron control and iron agglomerate dispersion). Clear lines with fresh water, clean pump with soda ash and RD. Use Agua Moss's pump to displace acid to the end of tubing with 88 bbls water. SD and let acid sit on perfs for 6 hrs. Tbg 950 psig, flow back 200 bbls. Some solids flowed back, pressure down to 350 psig while flowing. Return to injection, with 2 pumps going and 100 bbls injected the pressure was 1200 psig. (J. Davis)

Sante Fe Main Office
Phone: (505) 476-3441

General Information
Phone: (505) 629-6116

Online Phone Directory
<https://www.emnrd.nm.gov/ocd/contact-us>

State of New Mexico
Energy, Minerals and Natural Resources
Oil Conservation Division
1220 S. St Francis Dr.
Santa Fe, NM 87505

CONDITIONS

Action 27074

CONDITIONS

Operator: AGUA MOSS, LLC P.O. Box 600 Farmington, NM 87499	OGRID: 247130
	Action Number: 27074
	Action Type: [C-103] Sub. Workover (C-103R)

CONDITIONS

Created By	Condition	Condition Date
mkuehling	For record only - approval given for MITS on 10/6/23 - MIT due before 10/6/28	12/4/2024