

Submit Copy To Appropriate District

Office  
 District I – (575) 393-6161  
 1625 N. French Dr., Hobbs, NM 88240  
 District II – (575) 748-1283  
 811 S. First St., Artesia, NM 88210  
 District III – (505) 334-6178  
 1000 Rio Brazos Rd., Aztec, NM 87410  
 District IV – (505) 476-3460  
 1220 S. St. Francis Dr., Santa Fe, NM  
 87505

State of New Mexico  
 Energy, Minerals and Natural Resources

Form C-103  
 Revised July 18, 2013

OIL CONSERVATION DIVISION  
 1220 South St. Francis Dr.  
 Santa Fe, NM 87505

SUNDRY NOTICES AND REPORTS ON WELLS (DO NOT USE THIS FORM FOR PROPOSALS TO DRILL OR TO DEEPEN OR PLUG BACK TO A DIFFERENT RESERVOIR. USE "APPLICATION FOR PERMIT" (FORM C-101) FOR SUCH PROPOSALS.)		WELL API NO. <b>30-025-05909</b>
1. Type of Well: Oil Well <input checked="" type="checkbox"/> Gas Well <input type="checkbox"/> Other <input type="checkbox"/>		5. Indicate Type of Lease STATE <input type="checkbox"/> FEE <input checked="" type="checkbox"/>
2. Name of Operator <b>Apache Corporation</b>		6. State Oil & Gas Lease No.
3. Address of Operator <b>303 Veterans Airpark Lane, Ste. 3000, Midland, TX 79705</b>		7. Lease Name or Unit Agreement Name <b>Bertha Barber</b>
4. Well Location Unit Letter <b>K</b> : <b>1980</b> feet from the <b>S</b> line and <b>1980</b> feet from the <b>W</b> line Section <b>5</b> Township <b>20S</b> Range <b>37E</b> NMPM County <b>Lea</b>		8. Well Number <b>#4</b>
11. Elevation (Show whether DR, RKB, RT, GR, etc.) <b>3571' GR</b>		9. OGRID Number <b>873</b>
		10. Pool name or Wildcat

12. Check Appropriate Box to Indicate Nature of Notice, Report or Other Data

NOTICE OF INTENTION TO:		SUBSEQUENT REPORT OF:	
PERFORM REMEDIAL WORK <input type="checkbox"/>	PLUG AND ABANDON <input type="checkbox"/>	REMEDIAL WORK <input type="checkbox"/>	ALTERING CASING <input type="checkbox"/>
TEMPORARILY ABANDON <input type="checkbox"/>	CHANGE PLANS <input type="checkbox"/>	COMMENCE DRILLING OPNS. <input type="checkbox"/>	P AND A <input checked="" type="checkbox"/>
PULL OR ALTER CASING <input type="checkbox"/>	MULTIPLE COMPL <input type="checkbox"/>	CASING/CEMENT JOB <input type="checkbox"/>	
DOWNHOLE COMMINGLE <input type="checkbox"/>			
CLOSED-LOOP SYSTEM <input type="checkbox"/>			
OTHER: <input type="checkbox"/>		OTHER: <input type="checkbox"/>	

13. Describe proposed or completed operations. (Clearly state all pertinent details, and give pertinent dates, including estimated date of starting any proposed work). SEE RULE 19.15.7.14 NMAC. For Multiple Completions: Attach wellbore diagram of proposed completion or recompletion.

JMR Services, LLC/ DBA: A-Plus P&A, LLC plugged this well from 10/08/2024-11/08/2024.

Spud Date:

Rig Release Date:

I hereby certify that the information above is true and complete to the best of my knowledge and belief.

SIGNATURE Abigail Anderson TITLE P&A Engineer - Agent DATE 11/11/2024

Type or print name Abigail Anderson E-mail address: aanderson@jmrservices.com PHONE: 432-889-4673

**For State Use Only**

APPROVED BY: \_\_\_\_\_ TITLE \_\_\_\_\_ DATE \_\_\_\_\_

Conditions of Approval (if any):

Authorized by Nicole Primera- Apache P&A Tech

**P&A Subsequent Report**  
**Apache Corporation**  
**Well Name: Bertha Barber #4**  
**API #: 30-025-05909**

**Note: All cement pumped is Class C mixed at 14.8 ppg, yield 1.32 cu ft / sx. Cement volumes are based on inside capacities + 50' excess and outside capacities + 100% excess.**

**10/08/24** MIRU plugging equipment. Dug out cellar. NU BOP, RU power swivel, Drilled 4' cmt.

**10/09/24** Continued drilling out surface plug. Pressure tested csg to 500 psi. Bled down well. Tagged TOC @ 920. Circ'd hole clean. Set packer @ 875'. Pressure tested csg, held 500 psi. Bubble tested csg & tbq. POH.

**10/10/24** Drilled down to 1190'. Circ'd hole clean. POH.

**10/11/24** Tagged TOC @ 2078'. Bubble tested plug @ 2078', no bubbles. RIH w/ 7" logging tools & ran CBL from 2078' to surface. Set packer @ 1700'. Established an injection rate of 1 bpm @ 300-500 psi. Set pkr @ 1326'. Sqz'd 80 sx class C cmt into 8 3/4" hole @ 1756-1556'. WOC.

**10/14/24** Checked pressures. Bled off well. Bubble tested plug @ 1520', plug & intermediate csg had bubbles. Tagged TOC @ 1520'. Notified NMOCD. Pressure tested plug to 500 psi. Perf'd @ 1180'. Sqz'd 80 sx class C cmt into 8 3/4" @ 1180-980'. WOC. Bubble tested plug, no bubbles. Tagged TOC @ 878'. Notified NMOCD. Pressure tested plug to 600 psi, pressure did not hold. Reviewed CBL. CBL showed bad cmt behind csg @ 825'. Set pkr @ 800'.

**10/15/24** Checked pressures. Bubble tested below pkr, no bubbles on plug. Pressure tested & lost 100 psi in 2.5 minutes. Spotted 35 sx class C cmt @ 878-663' per the NMOCD's request. WOC. Bubble tested plug, no bubbles. Tagged TOC @ 701'. Notified NMOCD. Pressure tested plug, held 500 psi. Set pkr @ 200'. Bubble tested, had bubbles @ 325'.

**10/16/24** Checked pressures & bubble tested, intermediate still bubbling at surface. Perf'd @ 325'. Established an injection rate but could not break circulation. Sqz'd 50 sx class C cmt w/ 3% CACL @ 325-200' into 11" hole per Bobby Trujillo's approval w/ NMOCD. Bubble tested plug, no bubbles. Pressured up on plug to 500 psi. Perf'd @ 180'. Intermediate csg pressured up. Notified NMOCD.

**10/17/24** Checked pressures, well static. Bubble tested intermediate csg, csg still bubbling at surface. Established an injection rate. Bled down intermediate csg to 700 psi. Injected 80 bbls of FW at 205 bpm at 1300 psi to clean out 9 5/8" drilling mud. Could not break circulation. Sqz'd 40 sx class C cmt w/ 3% CACL @ 180-75' into 11" hole. WOC.

**10/18/24** Bubble tested csg strings. Production & intermediate csg had bubbles. Tagged TOC @ 43'. Notified NMOCD. Pressure tested plug to 500 psi. Plug would not hold pressure. RU power swivel.

**10/21/24** Checked pressures. 0 psi on production & surface csg, 10 psi w/ slight gas on intermediate. Drilled out cmt to 180'. Circ'd hole clean. Pressured up on perfs @ 180'. Bled down well to 800'. Bubble tested 7" csg, no bubbles. Bubble tested 9 5/8" & csg had bubbles.

**10/22/24** Bubble tested 7" csg, no bubbles. Perf'd @ 150'. Established an inj. Rate but no circulation out of 9 5/8. Pressured up to 500 psi. No communication between 7" & 9 5/8". Sqz'd 40 sx class C cmt w/ 3% CACL @ 150-100' per Bobby Trujillo w/ BLM's approval. WOC & tagged @ 75'. Perf'd @ 50'. No communication with 9 5/8". Left well open to pit overnight.

**10/23/24** Bubble tested csg, 7" and 9 5/8" has bubbles. Pressured up on perfs @ 50' to 1500 psi. Bled down well. Perf'd @ 25' per Bobby Trujillo w/ the BLM's approval. Established an injection rate but no circulation. Spotted class C cmt from 75' to surface in 7". ND BOP, NU bonnet flange. Circulated cement down the 7" & out the 9 5/8" to surface. Cmt began to circulate out of 13 3/8" but lost circulation. Used a total of 91 sx class C cmt.

**10/24/24** Bubble tested csg, only 7" had bubbles. NU BOP. RU Power swivel. Drilled to 30'. Circ'd hole clean. Spotted 5 sx class C cmt w/ 3% CACL @ 30' to surface down 7" per Bobby Trujillo w/ BLM's approval. ND BOP, NU flange. Sqz'd to 2000 psi.

**10/25/24** Bubble tested csg, 7" had bubbles. NU BOP. RU power swivel. Drilled to 55'. Circ'd hole clean.

**10/28/24** Bubble tested csg, 7" had bubbles. Spotted 10 sx class C cmt @ 55' to surface inside the 7". ND BOP & topped off 7". NU flange. Sqz'd cmt to 2000 psi w/ reverse unit pump. Maintained 2000 psi for 3 hrs, cmt would not lock up. SIW @ 1500 psi.

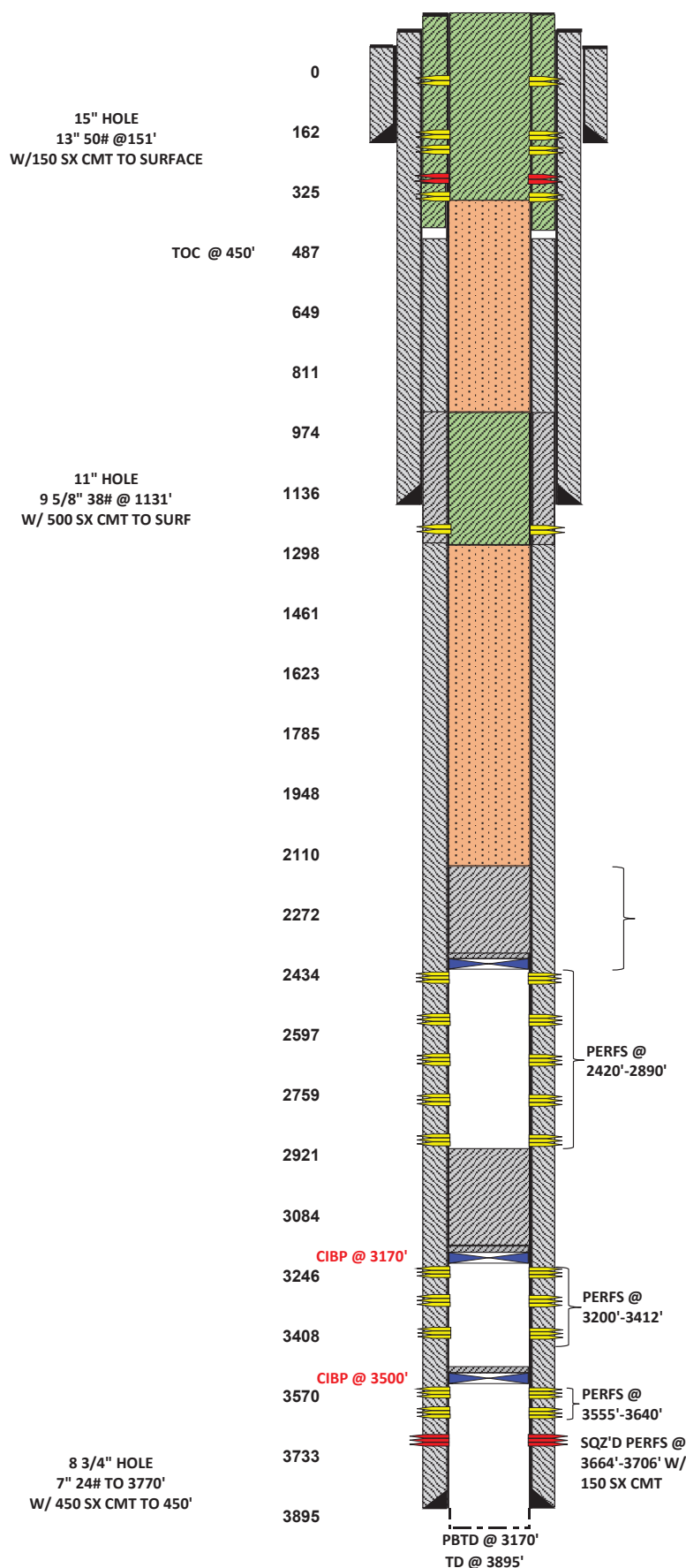
**10/29/24** Bubble tested csg, no bubbles. TOC on 7" csg @ 5'. RDMO.

**11/08/24** Moved in backhoe & welder. Dug out cellar. Cut off wellhead. Verified cmt at surface. Installed a below ground DHM. Dug up anchors, backfilled cellar, cleaned location, & moved off.



LEASE NAME	Bertha Barber
WELL #	#004
API #	30-025-05909
COUNTY	Lea

## RE-ENTRY FINAL PA WB DIAGRAM



**CURRENT CONDITIONS:** This well was plugged in November of 2023. When preparing to cut off WH & install dry hole marker, we noticed bubbles in the 7" csg at surface (NOT NOTED ON FINAL C-103) This is the work performed to drill out and

## DRILL OUT WORK PERFORMED.

**10/08/24** MURU plugging equipment. Dug out cellar. NU BOP, RU power swivel, Drilled 4' cmt.

**10/09/24** Continued drilling out surface plug. Pressure tested csg to 500 psi. Bled down well. Tagged TOC @ 920. Circ'd hole clean. Set packer @ 875'. Pressure tested csg, held 500 psi. Bubble tested csg & tbg. POH.

**10/10/24** Drilled down to 1190'. Circ'd hole clean. POH.

**10/11/24** Tagged TOC @ 2078'. Bubble tested plug @ 2078', no bubbles. RIH w/ 7" logging tools & ran CBL from 2078' to surface. Set packer @ 1700'. Established an injection rate of 1 bpm @ 300-500 psi. Set pkr @ 1326'. Sqz'd 80 sx class C cmt into 8 3/4" hole @ 1756-1556'. WOC.

**10/14/24** Checked pressures. Bled off well. Bubble tested plug @ 1520', plug & intermediate csg had bubbles. Tagged TOC @ 1520'. Notified NMOCD. Pressure tested plug to 500 psi. Perf'd @ 1180'. Sqz'd 80 sx class C cmt into 8 3/4" @ 1180-980'. WOC. Bubble tested plug, no bubbles. Tagged TOC @ 878'. Notified NMOCD. Pressure tested plug to 600 psi, pressure did not hold. Reviewed CBL. CBL showed bad cmt behind csg @ 825'. Set pkr @ 800'.

**10/15/24** Checked pressures. Bubble tested below pkr, no bubbles on plug. Pressure tested & lost 100 psi in 2.5 minutes. Spotted 35 sx class C cmt @ 878-663' per the NMOCD's request. WOC. Bubble tested plug, no bubbles. Tagged TOC @ 701'. Notified NMOCD. Pressure tested plug, held 500 psi. Set pkr @ 200'. Bubble tested, had bubbles @ 325'.

**10/16/24** Checked pressures & bubble tested, intermediate still bubbling at surface. Perf'd @ 325'. Established an injection rate but could not break circulation. Sqz'd 50 sx class C cmt w/ 3% CACL @ 325-200' into 11" hole per Bobby Trujillo's approval w/ NMOCD. Bubble tested plug, no bubbles. Pressured up on plug to 500 psi. Perf'd @ 180'. Intermediate csg pressured up. Notified NMOCD.

**10/17/24** Checked pressures, well static. Bubble tested intermediate csg, csg still bubbling at surface. Established an injection rate. Bled down intermediate csg to 700 psi. Injected 80 bbls of FW at 205 bpm at 1300 psi to clean out 9 5/8" drilling mud. Could not break circulation. Sqz'd 40 sx class C cmt w/ 3% CACL @ 180-75' into 11" hole. WOC.

**10/18/24** Bubble tested csg strings. Production & intermediate csg had bubbles. Tagged TOC @ 43'. Notified NMOCD. Pressure tested plug to 500 psi. Plug would not hold pressure. RU power swivel.

**10/21/24** Checked pressures. 0 psi on production & surface csg, 10 psi w/ slight gas on intermediate. Drilled out cmt to 180'. Circ'd hole clean. Pressured up on perfs @ 180'. Bled down well to 800'. Bubble tested 7" csg, no bubbles. Bubble tested 9 5/8" & csg had bubbles.

**10/22/24** Bubble tested 7" csg, no bubbles. Perf'd @ 150'. Established an inj. Rate but no circulation out of 9 5/8". Pressured up to 500 psi. No communication between 7" & 9 5/8". Sqz'd 40 sx class C cmt w/ 3% CACL @ 150-100' per Bobby Trujillo w/ BLM's approval. WOC & tagged @ 75'. Perf'd @ 50'. No communication with 9 5/8". Left well open to pit overnight.

**10/23/24** Bubble tested csg, 7" and 9 5/8" has bubbles. Pressured up on perfs @ 50' to 1500 psi. Bled down well. Perf'd @ 25' per Bobby Trujillo w/ the BLM's approval. Established an injection rate but no circulation. Spotted class C cmt from 75' to surface in 7". ND BOP, NU bonnet flange. Circulated cement down the 7" & out the 9 5/8" to surface. Cmt began to circulate out of 13 3/8" but lost circulation. Used a total of 91 sx class C cmt.

**10/24/24** Bubble tested csg, only 7" had bubbles. NU BOP. RU Power swivel. Drilled to 30'. Circ'd hole clean. Spotted 5 sx class C cmt w/ 3% CACL @ 30' to surface down 7" per Bobby Trujillo w/ BLM's approval. ND BOP, NU flange. Sqz'd to 2000 psi.

**10/25/24** Bubble tested csg, 7" had bubbles. NU BOP. RU power swivel. Drilled to 55'. Circ'd hole clean.

**10/28/24** Bubble tested csg, 7" had bubbles. Spotted 10 sx class C cmt @ 55' to surface inside the 7". ND BOP & topped off 7". NU flange. Sqz'd cmt to 2000 psi w/ reverse unit pump. Maintained 2000 psi for 3 hrs, cmt would not lock up. SIW @ 1500 psi.

**10/29/24** Bubble tested csg, no bubbles. TOC on 7" csg @ 5'. RDMO.

**11/08/24** Moved in backhoe & welder. Dug out cellar. Cut off wellhead. Verified cmt at surface. Installed a below ground DHM. Dug up anchors, backfilled cellar, cleaned location, & moved off.

Sante Fe Main Office  
Phone: (505) 476-3441

General Information  
Phone: (505) 629-6116

Online Phone Directory  
<https://www.emnrd.nm.gov/ocd/contact-us>

State of New Mexico  
Energy, Minerals and Natural Resources  
Oil Conservation Division  
1220 S. St Francis Dr.  
Santa Fe, NM 87505

CONDITIONS

Action 406556

CONDITIONS

Operator:  APACHE CORPORATION 303 Veterans Airpark Ln Midland, TX 79705	OGRID:  873
	Action Number:  406556
	Action Type:  [C-103] Sub. Plugging (C-103P)

CONDITIONS

Created By	Condition	Condition Date
kfortner	Submit C-103Q within one year of plugging.	12/10/2024
kfortner	CBL is in files DHM set 11/8/24	12/10/2024