

Submit Copy To Appropriate District
Office
District I – (575) 393-6161
1625 N. French Dr., Hobbs, NM 88240
District II – (575) 748-1283
811 S. First St., Artesia, NM 88210
District III – (505) 334-6178
1000 Rio Brazos Rd., Aztec, NM 87410
District IV – (505) 476-3460
1220 S. St. Francis Dr., Santa Fe, NM
87505

State of New Mexico
Energy, Minerals and Natural Resources

Form C-103
Revised July 18, 2013

OIL CONSERVATION DIVISION
1220 South St. Francis Dr.
Santa Fe, NM 87505

WELL API NO. 30-015-33726
5. Indicate Type of Lease STATE <input type="checkbox"/> FEE <input checked="" type="checkbox"/> FEDERAL <input type="checkbox"/>
6. State Oil & Gas Lease No.
7. Lease Name or Unit Agreement Name BIG CHIEF FEE
8. Well Number 007
9. OGRID Number 228937
10. Pool name or Wildcat DUBLIN RANCH; MORROW (GAS)
11. Elevation (Show whether DR, RKB, RT, GR, etc.) 3065 GL

SUNDRY NOTICES AND REPORTS ON WELLS
(DO NOT USE THIS FORM FOR PROPOSALS TO DRILL OR TO DEEPEN OR PLUG BACK TO A DIFFERENT RESERVOIR. USE "APPLICATION FOR PERMIT" (FORM C-101) FOR SUCH PROPOSALS.)

1. Type of Well: Oil Well ☐ Gas Well ☒ Other

2. Name of Operator
Matador Production Company

3. Address of Operator
One Lincoln Centre, 5400 LBJ Freeway, Ste 1500, Dallas, TX 75240

4. Well Location
Unit Letter L : 1980 feet from the SOUTH line and 1310 feet from the WEST line
Section 21 Township 22S Range 28E NMPM County EDDY

12. Check Appropriate Box to Indicate Nature of Notice, Report or Other Data

NOTICE OF INTENTION TO:	SUBSEQUENT REPORT OF:
PERFORM REMEDIAL WORK <input type="checkbox"/>	REMEDIAL WORK <input type="checkbox"/>
TEMPORARILY ABANDON <input type="checkbox"/>	ALTERING CASING <input type="checkbox"/>
PULL OR ALTER CASING <input type="checkbox"/>	COMMENCE DRILLING OPNS. <input type="checkbox"/>
DOWNHOLE COMMINGLE <input type="checkbox"/>	P AND A <input type="checkbox"/>
CLOSED-LOOP SYSTEM <input type="checkbox"/>	CASING/CEMENT JOB <input type="checkbox"/>
OTHER: <input type="checkbox"/>	OTHER: File Clean up-Added Perfs <input checked="" type="checkbox"/>

13. Describe proposed or completed operations. (Clearly state all pertinent details, and give pertinent dates, including estimated date of starting any proposed work). SEE RULE 19.15.7.14 NMAC. For Multiple Completions: Attach wellbore diagram of proposed completion or recompletion.

Matador is requesting to put on file the 2006 well intervention records from Nadel and Gussman Permian, LLC which are summarized below:

- 2/23/2006: Perforate Morrow from 11,902' – 11,910'
- 2/24/2006: Acidize perfs with 500 gals of 7-1/2% HCl & 500 gals of 20% Acetic acid
- 2/26/2006: Set RBP @ 11,845' and dump bail 2 sks
- 2/26/2006: Perforate Morrow from 11,482' – 11,508' and 11,558' – 11,570'
- 3/4/2006: Acidize Morrow perfs with 4000 gals of 7-1/2% HCl

Spud Date:

Rig Release Date:

I hereby certify that the information above is true and complete to the best of my knowledge and belief.

SIGNATURE Brett Jennings TITLE Regulatory Analyst DATE 12/10/2024

Type or print name Brett Jennings E-mail address: Brett.Jennings@matadorresources.com PHONE: 972-629-2160

For State Use Only

APPROVED BY: _____ TITLE _____ DATE _____

Conditions of Approval (if any):

NOEL AND GUSSMAN PERMIAN, LLC
NEW MEXICO
2/20/2006
DAILY WORKOVER REPORTS

1

BIG CHIEF FEE #7
LOCATION: 1980' FSL, 1310' FWL
SEC. 21 T22S, R28E

OBJECTIVE: ADD MORROW PERFS
EDDY COUNTY, NEW MEXICO

02/20/2006 MI RU PU, reverse unit and pit, set frac for 300 bbls 3% KCL, Prep to RU slick line and fish plunger and set 2.25 plug in "R" nipple.

Daily Cost: \$2,495.00

Cumulative Cost: \$2,495.00

02/21/2006 MIRU slick line and RIH and catch plunger, @ 11,888', plunger stuck, POH and RIH and fish bumper spring @ 12,145' POH, sand on both plunger and bumper spring, PU and RIH w/1 1/2" sinker bar, and check for fill, tag fill @ 12,320', bottom set of Perfs covered, POH and PU bailer and RIH and catch sample, POH, sample showed to be Frac sand, PU S-plug and RIH and set in 2.25 "R" nipple @ 12,168' POH and bleed well down, RD slick line and RU pump and load tbg, ND tree and NU BOP, get off % tool, RU pump and reverse circ, bottoms up. SION prep to POH and stand.

Daily Cost: \$9,035.00

Cumulative Cost: \$11,530.00

02/22/2006 SIP 0 psi, LD 10 jts 2 7/8" tbg and POH w/182 stands and stand, PU and RIH as follows: WL guide, 2.25 "FN", 2 7/8" 8' sub, 10K PKR w/2.25 % tool, and 364 jts + 1-6' sub, set PKR and land w/14 points compression, ND BOP and NU tree, test backside to 500 psi, (OK), SION prep to swab well down 3000' and perf Morrow zone 11,902-11,910' 4 SPF 32 holes.

Daily Cost: \$5,285.00

Cumulative Cost: \$16,815.00

02/23/2006 MIRU EM Hobbs, PU and RIH w/1 11/16 guns and correlate to CBL log ran 2/2/05, and perforate Morrow zone 11,902'-11,910' 4 SFT 32 hole, POH and RD, RU swab and swab well down to % tool, SION prep to acidize.

Daily Cost: \$10,175.00

Cumulative Cost: \$26,990.00

02/24/2006 SITP, slight blow, RU tree savior and CUDD and Acidized Morrow zone 11,902-11,910 w/500 gals 7 1/2% HCL and 500 gals 20% Acetic acid, Max pressure 7000 psi, breakdown pressure 5450 psi, Max pressure 5450, Avg pressure 4942 psi, Avg rate 3.3 bpm, ISIP 3900 psi, 5 min 3260, 10 min 3032 15 min 2960 psi, total load 93 bbls, RD CUDD and tree savior, RU flowback, open well with 2550 psi, on 14/64 choke, pressure bled right down, RU swab and RIH, IFL @ surface, made 13 runs and recovered 76.5 bbls, SION prep to swab test.

Daily Cost: \$12,000.00

Cumulative Cost: \$38,990.00

NADEL AND GUSSMAN PERMIAN, LLC
NEW MEXICO
2/20/2006
DAILY WORKOVER REPORTS

2

BIG CHIEF FEE #7**LOCATION: 1980' FSL, 1310' FWL****SEC. 21 T22S, R28E****OBJECTIVE: ADD MORROW PERFS**
EDDY COUNTY, NEW MEXICO

02/25/2006 SITP 100 psi, burnable gas, bleed well down, RU swab and RIH, IFL @ 7500', made 4 runs, no show of gas, no fluid entry, ND tree and NU BOP, get off & tool and equalize fluid, get back onto PKR and release, reverse circ hole, LD 6 jts and RU CUDD, spot 500 gals 20% Acetic acid @ 11570', RD Cudd, POH and stand w/100 stands, SION prep to POH and RU EM Hobbs.

Daily Cost: \$9,000.00

Cumulative Cost: \$47,990.00

02/26/2006 RU EM Hobbs and RIH w/4.5 junk basket to 11,890', POH and PU 5 1/2" RBP and RIH and set @ 11,845', POH and PU bailer and RIH and dump 2 sx sand on top of RBP, POH and PU 3 1/8" csg guns and perforated Morrow zones 11,482'-11,508', and 11,558'-11,570' 4 SPF 162 holes, fluid level at 1,190' from surface, 1st run, fluid came up 140', 2nd run, fluid came up 200' more, RD EM Hobbs RU flowback, well pressured up to 300 psi, open well on 16/64, pressure dropped off to 0 psi, SION prep to evaluate.

Daily Cost: \$18,000.00

Cumulative Cost: \$65,990.00

02/27/2006 SIP 2000 psi, open well on 14/64 and try to unload hole, well died down to 25 psi, leave well open on 22/64 choke and wait on wire line, well starting flowing @ 1:30 pm @ 25 psi, on 22/64 choke, leave well flowing over night and try to unload csg volume, prep to RIH and set PKR on WL.

Daily Cost: \$5,000.00

Cumulative Cost: \$70,990.00

03/01/2006 Flowing @ 15 psi, rate 200 mcf/d, choke w/o, 99 bbls rec, ru wl, pu and rih as follows: 2 7/8" 6'-sub, 2.25 "F" nipple, w/plug in place, 6'-sub, "F" nipple, 6'-sub, 10K PKR and setting tool. Set pkr @ 11,405', POH rd wl and bleed well down. PU retrieving tool and tih w/168 stands, SD well flowing gas thru tbg and backside. SWIFN to allow entrained gas to work out.

Daily Cost: \$14,000.00

Cumulative Cost: \$84,990.00

03/02/2006 SIP tbg 500 psi, csg 500 psi, bleed well down and TIH w/14 jts, a 8' sub, 4' sub, and 1-jts, land tbg and space out for 10 points compression, ND BOP and NU tree, RU SL and RIH and fish prong, fluid level @ 3800', pull prong and POH, fluid level @ 2900'. RIH and fish plug, fish plug and POH, fluid level @ 650'. RD SL and RU flow back, RU swab and RIH, IFL @ 450, made one run, well flowing. Flow well and unload tbg recovered 38 bbls out of 44, well flowing @ 74 psi, on 24/64 choke @ 251 mcf/d. Open well w/o and bleed well down to RIH w/swab, well flowing to much to swab. SWIFN.

Daily Cost: \$7,000.00

Cumulative Cost: \$91,990.00

NADEL AND GUSSMAN PERMIAN, LLC
NEW MEXICO
2/20/2006
DAILY WORKOVER REPORTS

3

BIG CHIEF FEE #7**LOCATION: 1980' FSL, 1310' FWL****SEC. 21 T22S, R28E****OBJECTIVE: ADD MORROW PERFS**
EDDY COUNTY, NEW MEXICO

03/03/2006 SITP 4000 psi, open well and bleed down, flowing rate 466 mcf/d, 28 psi, on 48/64 choke, recovered 3 bbls, leave well flow over night on 24/64 choke, prep to acidize.

Daily Cost: \$3,500.00

Cumulative Cost: \$95,490.00

03/04/2006 Well flowing over night on 24/64 choke, pressure 60 psi, rate 204 mcf/d. SIW and RU tree savior and Cudd. Acidize Morrow zone 11,482'-11,508'-11,558'-11,570' w/4000 gals 7 1/2% HCL dropping 320 BS, Test lines to 7500 psi, pressure backside to 1500 psi. Breakdown pressure 5720 psi, mstp 6614 psi, astp 6450 psi, astr 6.5 bpm, isip 4550, 5 min 4053, 10 min 3708, 15 min 3400 psi, total load 168 bbls. RD Cudd and tree savior. Open well w/3400 psi, on a 10/64, flowed well for 15 mins and died, recovered 15 bbls. RU swab and made 2 1/2 runs well kicked off and unloaded 80 bbls. Flow rate 550 psi, on 24/64 choke, rate 870 mcf/d, leave well flowing w\ tester. LTR 73 bbls.

Daily Cost: \$20,000.00

Cumulative Cost: \$115,490.00

03/05/2006 Well flowing @ 500 psi, on 24/64 choke, rate 1700 mcf/d. RD PU and clean loc, SIW @ 10:35 am. RD flow back and RU sales line, open well @ 1:45 pm w/2150 psi, down sales line. LTR 73 bbls

Daily Cost: \$4500.00

Cumulative Cost: \$119,990.00

03/06/2006 Flowing on @ 24/64 choke @ 1407 mcf/d, 0 bopd, 4 bwpd, lp 600 psi. Sales 1057 mcf. LTR 69 bbls. Opened choke to a 48/64 and released tester.

Daily Cost: \$1500.00

Cumulative Cost: \$121,490.00

03/07/2006 Flowing on @ 48/64 choke @ 600 psi, 1255 mcf/d, 0 bopd, 1 bwpd, lp 600 psi. Sales 1331 mcf. LTR 68 bbls.

Daily Cost: \$00.00

Cumulative Cost: \$121,490.00

03/08/2006 Flowing on @ 48/64 choke @ 650 psi, 1131 mcf/d, 0 bopd, 1 bwpd, lp 602 psi. Sales 1131 mcf. LTR 67 bbls.

Daily Cost: \$00.00

Cumulative Cost: \$121,490.00

03/09/2006 Flowing on @ 48/64 choke @ 650 psi, 1082 mcf/d, 0 bopd, 1 bwpd, lp 604 psi. Sales 1131 mcf. LTR 66 bbls.

Daily Cost: \$00.00

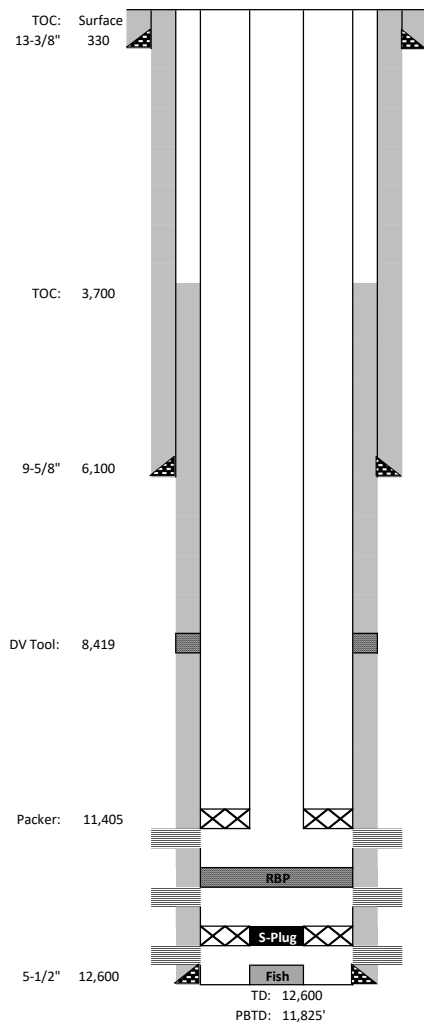
Cumulative Cost: \$121,490.00

03/10/2006 Flowing on @ 48/64 choke @ 650 psi, 1005 mcf/d, 0 bopd, 1 bwpd, lp 597 psi. Sales 1058 mcf. LTR 65 bbls.

Daily Cost: \$00.00

Cumulative Cost: \$121,490.00

Big Chief Fee #007
1980' FSL & 1310' FWL Sec. 21-22S-28E
Eddy County, NM
API: 30-015-33726
CURRENT WELLBORE SCHEMATIC
Spud: 12/1/2004



Elev:	3,065
KB:	19

Casing Information						
Section	Hole Size	Casing Size	Type	Weight (lb/ft)	Joints	Depth Set
Surface	17-1/2"	13-3/8"	H-40	48#	8	330
Intermediate	12-1/4"	9-5/8"	HCP-110, N-80	40#	135	6,100
Production	7-7/8"	5-1/2"	S-95	17#	274	12,600
					DV Tool	8,419

Cementing Record			
Section	Type	TOC	Date Run
Surface	160 sks Poz x 200 sks CI C	Surface	12/1/2004
Intermediate	1600 sks Poz x 200 sks CI C	Surface	12/16/2004
Production	(1) 500 sks Poz/H x 675 sks PVL (2) 675 sks Poz/H x 200 sks PVL	3,700	1/15/2005

*CBL 2/2/2005

Tubing Information		
Item	Notes	Depth
Tubing	2-7/8" tubing (350 jts + 8' sub + 4' sub)	
Packer	10K Pkr	11,405
Tubing	2-7/8" tubing jt (6')	
SN	"F" Nipple	
Tubing	2-7/8" tubing jt (6')	
SN	"F" Nipple	
EOT	2-7/8" tubing jt (6')	11,427'
Plug Back TD	PBTD	11,825'

Perforation Information			
Date	Formation	Depth	Treatment
2/26/2006	Morrow perfs (4 spf, 162 holes)	(11,482'-11,570')	4k gal 7.5% HCl, 320 BS
2/23/2006	Morrow perfs (4 spf, 32 holes)	(11,902'-11,910')	500 gal 7.5% HCl, 500 gal 20% acetic acid
2/17/2005, 3/8/2005	Morrow perfs (26 holes)	(12,236'-12,250')	2,100 gal 7.5% HCl, 16 RCNBS, 73 bbl 3% KCl flush; 1k gal 7.5% HCl; 50k# 18/40 versa prop, 763 bbls 3% KCl
3/8/2005	Morrow perfs	(12,322'-12,328')	50k# 18/40 versa prop, 763 bbls 3% KCl
2/3/2005	Morrow perfs (6 spf, 60 holes)	(12,426'-12,436')	10% acetic acid

Plugging Information			
Date	Type	Depth	Pulled/Drilled
2/26/2006	RBP + 2 sks cmt	11,845'	
2/21/2006	S-plug in "R" nipple	(12,149'-12,168')	
2/17/2005	CIBP	12,300'	3/10/2005

Fish Information		
Date	Type	TOF
2/26/2006	1-1/2" gun bar (5') w/ 1" FN	12,405'

Formation Tops	
Salt	328
Base of Salt	2,300
Delaware	2,547
Cherry Canyon	3,332
Brushy Canyon	3,913
Bone Spring	6,012
Wolfcamp	9,510
Strawn	10,784
Atoka	11,054
Morrow	11,419

2/26/2006 Morrow perfs (11,482'-11,570')

2/26/2006 RBP + 2 sks cmt 11,845'

2/23/2006 ~~Morrow perfs (11,902'-11,910')~~

2/21/2006 Packer + S-Plug (12,149'-12,168')

2/3/2005 ~~Morrow perfs (12,236'-12,436')~~

2/26/2006 TOF 12,405'

Date: 11/25/2024

Sante Fe Main Office
Phone: (505) 476-3441

General Information
Phone: (505) 629-6116

Online Phone Directory
<https://www.emnrd.nm.gov/oed/contact-us>

State of New Mexico
Energy, Minerals and Natural Resources
Oil Conservation Division
1220 S. St Francis Dr.
Santa Fe, NM 87505

CONDITIONS

Action 410231

CONDITIONS

Operator: MATADOR PRODUCTION COMPANY One Lincoln Centre Dallas, TX 75240	OGRID: 228937
	Action Number: 410231
	Action Type: [C-103] Sub. Workover (C-103R)

CONDITIONS

Created By	Condition	Condition Date
gcordero	None	12/10/2024