

Office
 District I – (575) 393-6161
 1625 N. French Dr., Hobbs, NM 88240
 District II – (575) 748-1283
 811 S. First St., Artesia, NM 88210
 District III – (505) 334-6178
 1000 Rio Brazos Rd., Aztec, NM 87410
 District IV – (505) 476-3460
 1220 S. St. Francis Dr., Santa Fe, NM
 87505

State of New Mexico
 Energy, Minerals and Natural Resources

Form C-103
 Revised July 18, 2013

OIL CONSERVATION DIVISION
 1220 South St. Francis Dr.
 Santa Fe, NM 87505

WELL API NO. 30-015-38144
5. Indicate Type of Lease STATE <input checked="" type="checkbox"/> FEE <input type="checkbox"/> FEDERAL <input type="checkbox"/>
6. State Oil & Gas Lease No.
7. Lease Name or Unit Agreement Name Eddy BD State
8. Well Number 003
9. OGRID Number 228937
10. Pool name or Wildcat GOLDEN LANE; STRAWN (GAS)

SUNDRY NOTICES AND REPORTS ON WELLS (DO NOT USE THIS FORM FOR PROPOSALS TO DRILL OR TO DEEPEN OR PLUG BACK TO A DIFFERENT RESERVOIR. USE "APPLICATION FOR PERMIT" (FORM C-101) FOR SUCH PROPOSALS.)	
1. Type of Well: Oil Well <input checked="" type="checkbox"/> Gas Well <input type="checkbox"/> Other <input type="checkbox"/>	
2. Name of Operator Matador Production Company	
3. Address of Operator One Lincoln Centre, 5400 LBJ Freeway, Ste 1500, Dallas, TX 75240	
4. Well Location Unit Letter G : 1980 feet from the NORTH line and 1980 feet from the EAST line Section 32 Township 20S Range 30E NMPM County EDDY	
11. Elevation (Show whether DR, RKB, RT, GR, etc.) 3360 GR	

12. Check Appropriate Box to Indicate Nature of Notice, Report or Other Data

NOTICE OF INTENTION TO:	SUBSEQUENT REPORT OF:
PERFORM REMEDIAL WORK <input type="checkbox"/>	REMEDIAL WORK <input type="checkbox"/>
TEMPORARILY ABANDON <input type="checkbox"/>	ALTERING CASING <input type="checkbox"/>
PULL OR ALTER CASING <input type="checkbox"/>	COMMENCE DRILLING OPNS. <input type="checkbox"/>
DOWNHOLE COMMINGLE <input type="checkbox"/>	P AND A <input checked="" type="checkbox"/>
CLOSED-LOOP SYSTEM <input type="checkbox"/>	CASING/CEMENT JOB <input type="checkbox"/>
OTHER: <input type="checkbox"/>	OTHER: <input type="checkbox"/>

13. Describe proposed or completed operations. (Clearly state all pertinent details, and give pertinent dates, including estimated date of starting any proposed work). SEE RULE 19.15.7.14 NMAC. For Multiple Completions: Attach wellbore diagram of proposed completion or recompletion.

10/31/24: MIRU P&A Package; NU & test BOPs.

11/1/24: Made multiple attempts to retrieve RBP (previously set at 9,811'), unsuccessful; RBP moving downhole with weight.

11/5/24: TIH & push RBP down to 10,513' TM before stacking out weight.

11/6/24: TIH & latch RBP; Remove RBP from well.

11/7/24: TIH & tag high @ 10,513' TM; OCD OK'd to spot on depth.

11/8/24: Spot 25 sks Class H cmt @ 10,513' TM.

11/11/24: RIH & set CIBP @ 9,815' WLM; TIH & tag CIBP @ 9,803' TM; Circulate wellbore full of MLF; Pressure test casing to 720 psi for 30 minutes, good test.

11/12/24: Spot 25 sks Class H cmt on CIBP. POOH & run CBL from 9,500' to surface (est. TOC @ surface).

11/13/24: TIH & tag TOC @ 9,632' TM; PU & spot a 65 sk Class C cmt balanced plug @ 7,050' TM; PU & spot a 35 sk Class C cmt balanced plug @

4,115' TM; PU & spot a 25 sk Class C cmt balanced plug @ 2,250' TM; PU & spot a 40 sk Class C cmt balanced plug @ 1,555' TM.

11/14/24: TIH & tag TOC @ 1,182' TM; RIH & perf @ 540' WLM; Attempt to establish circulation, no success; TIH & spot a 30 sk Class C cmt balanced

plug @ 590' TM; WOC for 4 hrs; RIH & tag TOC @ 326' WLM; PU & perf @ 100' WLM; Establish circulation & circulate Class C cmt to surface on all

strings and squeeze remaining into formation (130 sks Class C cmt total).

11/15/24: Cut off wellhead @ tag TOCs in casing strings at following depths: 5 1/2" 52' 0 5/8" 44' 12 3/8" 44' 20" 41'

Spud Date:

Rig Release Date:

I hereby certify that the information above is true and complete to the best of my knowledge and belief.

SIGNATURE Brett Jennings TITLE Regulatory Analyst DATE 10/25/2024

Type or print name Brett Jennings E-mail address: Brett.Jennings@matadorresources.com PHONE: 971-629-2160

For State Use Only

APPROVED BY: _____ TITLE _____ DATE _____

Conditions of Approval (if any): _____

10/31/24: MIRU P&A Package; NU & test BOPs.

11/1/24: Made multiple attempts to retrieve RBP (previously set at 9,811'), unsuccessful; RBP moving downhole with weight.

11/5/24: TIH & push RBP down to 10,513' TM before stacking out weight.

11/6/24: TIH & latch RBP; Remove RBP from well.

11/7/24: TIH & tag high @ 10,513' TM; OCD OK'd to spot on depth.

11/8/24: Spot 25 sks Class H cmt @ 10,513' TM.

11/11/24: RIH & set CIBP @ 9,815' WLM; TIH & tag CIBP @ 9,803' TM; Circulate wellbore full of MLF; Pressure test casing to 720 psi for 30 minutes, good test.

11/12/24: Spot 25 sks Class H cmt on CIBP. POOH & run CBL from 9,500' to surface (est. TOC @ surface).

11/13/24: TIH & tag TOC @ 9,632' TM; PU & spot a 65 sk Class C cmt balanced plug @ 7,050' TM; PU & spot a 35 sk Class C cmt balanced plug @ 4,115' TM; PU & spot a 25 sk Class C cmt balanced plug @ 2,250' TM; PU & spot a 40 sk Class C cmt balanced plug @ 1,555' TM.

11/14/24: TIH & tag TOC @ 1,182' TM; RIH & perf @ 540' WLM; Attempt to establish circulation, no success; TIH & spot a 30 sk Class C cmt balanced plug @ 590' TM; WOC for 4 hrs; RIH & tag TOC @ 326' WLM; PU & perf @ 100' WLM; Establish circulation & circulate Class C cmt to surface on all strings and squeeze remaining into formation (130 sks Class C cmt total).

11/15/24: Cut off wellhead @ tag TOCs in casing strings at following depths: 5-1/2" - 52', 9-5/8" - 44', 13-3/8" - 14', 20" - 1'.

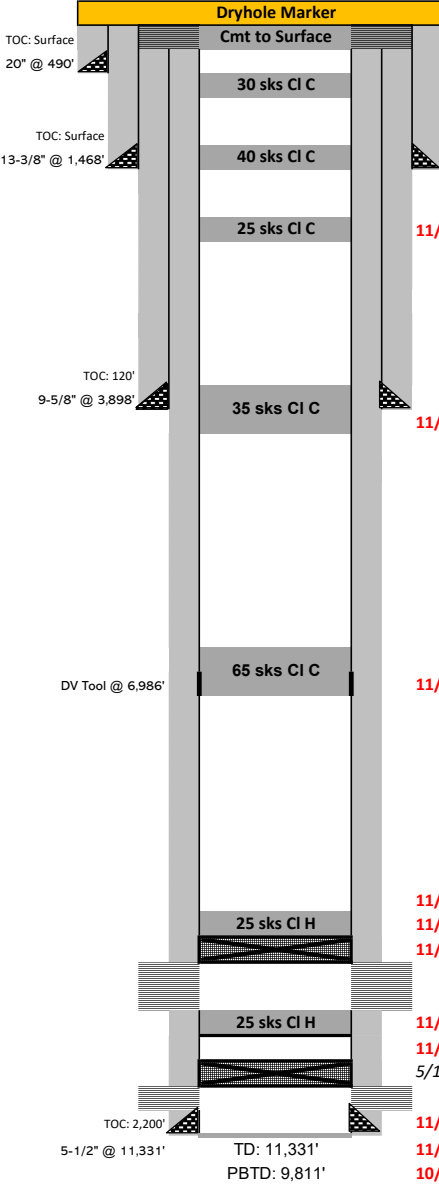
11/19/24: TIH w/ 1" tbg & topped off all casing strings with 20 sks Class C cmt; WOC for 4 hrs; Install Dryhole Marker; Fill cellar & back drag location.

Spud Date: 12/19/10

Plug Date: RDMO; 11/19/24

NMOCD Inspector: David Alvarado

Eddy BD State #003
1980' FNL & 1980' FEL Sec 32 - 20S - 30E
Eddy County, NM
API: 30-015-38144
AS PLUGGED WELLBORE SCHEMATIC
Spudded: 12/19/10



11/19/24: TIH w/ 1" tbg & topped off all casing strings with 20 sks Class C cmt; WOC for 4 hrs; Install Dryhole Marker; Fill cellar & back drag location.
11/15/24: Cut off wellhead @ tag TOCs in casing strings at following depths: 5-1/2" - 52', 9-5/8" - 44', 13-3/8" - 14', 20" - 1'.
11/14/24: PU & perf @ 100' WLM; Establish circulation & circulate Class C cmt to surface on all strings and squeeze remaining into formation (130 sks Class C cmt total).
11/14/24: RIH & perf @ 540' WLM; Attempt to establish circulation, no success; TIH & spot a 30 sk Class C cmt balanced plug @ 590' TM; WOC for 4 hrs; RIH & tag TOC @ 326' WLM.

11/14/24: TIH & tag TOC @ 1,182' TM.
11/13/24: PU & spot a 40 sk Class C cmt balanced plug @ 1,555' TM.

11/13/24: PU & spot a 25 sk Class C cmt balanced plug @ 2,250' TM.

11/13/24: PU & spot a 35 sk Class C cmt balanced plug @ 4,115' TM.

11/13/24: PU & spot a 65 sk Class C cmt balanced plug @ 7,050' TM.

11/13/24: TIH & tag TOC @ 9,632' TM.
11/12/24: Spot 25 sks Class H cmt on CIBP. POOH & run CBL from 9,500' to surface (est. TOC @ surface).
11/11/24: RIH & set CIBP @ 9,815' WLM; TIH & tag CIBP @ 9,803' TM; Circulate wellbore full of MLF; Pressure test casing to 720 psi for 30 minutes, good test.
9/28/2020: Wolfcamp perfs (9,868' - 10,060')
5/10/2012: Wolfcamp perfs (10,110' - 10,358')
11/7/24: TIH & tag high @ 10,513' TM; OCD OK'd to spot on depth.
11/6/24: TIH & latch RBP; Remove RBP from well.
5/10/2012: Set CIBP at 11,050'
Strawn perfs (11,071' - 11,082')
11/5/24: TIH & push RBP down to 10,513' TM before stacking out weight.
11/1/24: Made multiple attempts to retrieve RBP (previously set at 9,811'), unsuccessful; RBP moving downhole with weight.
10/31/24: MIRU P&A Package; NU & test BOPs.

	Casing Information		Type	Weight (lb/ft)	Joints	Depth Set
	Hole Size	Casing Size				
Surface	26"	20"	H-40	94		490'
Intermediate	17.5"	13-3/8"	J-55	54.5		1,468'
Intermediate	12.25"	9-5/8"	J-55	36		3,898'
Production	8 3/4"	5-1/2"	P-110	17		11,331'
					DV Tool	6,986'

	Cementing Record	TOC	Date Run
Surface	1025 sks Class C + Top fill several more sks	Surface	12/24/2010
Intermediate	1305 sks Class C	Surface	12/26/2010
Intermediate	1185 sks Class C	120'	1/3/2011
Production	Stage 1: 1040 Class C Stage 2: 945 sks Class H	2,200'	1/28/2011

Geologic Markers	
Yates	1505'
Delaware	4065'
Bone Spring	6540'
Wolfcamp	9902'
Strawn	10,930'
Atoka	11,375'
Morrow	12,075'

Sante Fe Main Office
Phone: (505) 476-3441

General Information
Phone: (505) 629-6116

Online Phone Directory
<https://www.emnrd.nm.gov/ocd/contact-us>

State of New Mexico
Energy, Minerals and Natural Resources
Oil Conservation Division
1220 S. St Francis Dr.
Santa Fe, NM 87505

CONDITIONS

Action 406262

CONDITIONS

Operator: MATADOR PRODUCTION COMPANY One Lincoln Centre Dallas, TX 75240	OGRID: 228937
	Action Number: 406262
	Action Type: [C-103] Sub. Plugging (C-103P)

CONDITIONS

Created By	Condition	Condition Date
gcordero	Clean Location in accordance with 19.15.25.10 NMAC.	12/12/2024
gcordero	Submit C-103Q within one year of plugging.	12/12/2024