

|                                 |   |                                      |
|---------------------------------|---|--------------------------------------|
| Well Name: JAMES RANCH UNIT DI2 | Well Location: T22S / R30E / SEC 25 /<br>NESW / 32.214453 / -103.500974 | County or Parish/State: EDDY /<br>NM |
| Well Number: 194H               | Type of Well: OIL WELL  | Allottee or Tribe Name:              |
| Lease Number: NMNM0307337       | Unit or CA Name:  | Unit or CA Number:                   |
| US Well Number: 3001543369      | Well Status: Plugged and Abandoned                                      | Operator: BOPCO LP                   |

\*\*\* WELL RECORD CLEANUP\*\*\*  
XTO Energy Inc. during well record review found that this document hadn't been previously submitted to NMOCD.

Subsequent Report

|                                       |                                     |
|---------------------------------------|-------------------------------------|
| Type of Submission: Subsequent Report | Type of Action Plug and Abandonment |
| Date Sundry Submitted: 09/19/2019     |                                     |
| Disposition: Accepted                 | Disposition Date: 09/19/2019        |

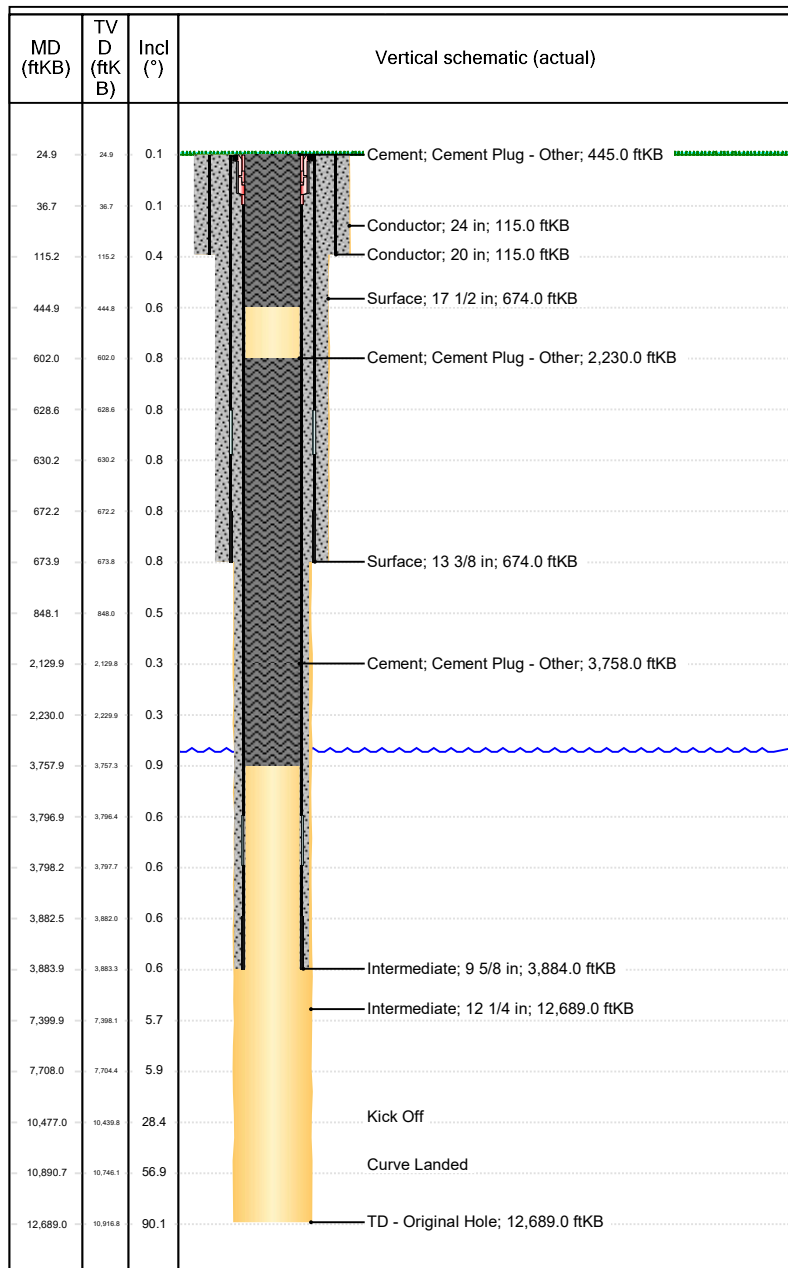
**Remarks:** XTO Energy Inc. respectfully submits the subsequent report of Drill and Abandon on the above referenced well. 02/06/2018 to 02/08/2018 we were still trying to recover our oil base mud, finally was able to get the well circulated. 02/08/2018 ? Spot 160sx Class H cmt from 10,890.7? to 10,477?, with full returns. WOC (8.5hrs) and Tag. 02/09/2018 ? Spot 120sx Class H cmt from 7708? to 7400?, with full returns. WOC (12.5hrs) and Tag. 02/11/2018 ? Spot 60sx Class C cmt from 3758? to 2130?, with full returns. WOC (19.5hrs) and Tag. 02/12/2018 ? Spot 60sx Class C cmt from 2230? to 602?. WOC (16hrs) and Tag. 02/12/2018 ? Spot 50sx Class C cmt from 445? to 0?, with full returns. WOC (hrs) and Tag. Cut off WH. Install dry hole marker. 9/19/2019 dmckinne accepted for record as to the plugging of the wellbore. This was a skid, the reclamation will take place under the new well when it is ABD.



## Downhole Well Profile - with Schematic

Well Name: James Ranch Unit DI 2 194H

|                                   |                               |  |                              |                |                                   |                                  |                                   |
|-----------------------------------|-------------------------------|--|------------------------------|----------------|-----------------------------------|----------------------------------|-----------------------------------|
| API/UWI<br>3001543369             | SAP Cost Center ID            | Permit Number<br>BLM                   | State/Province<br>New Mexico | County<br>Eddy | Ground Elevation (ft)<br>3,343.00 | KB-Ground Distance (ft)<br>25.00 | Surface Casing Flange Elevatio... |
| Surface Location<br>T22S-R30E-S25 | Spud Date<br>12/23/2017 15:00 | Original KB Elevation (ft)<br>3,368.00 |                              |                |                                   |                                  |                                   |



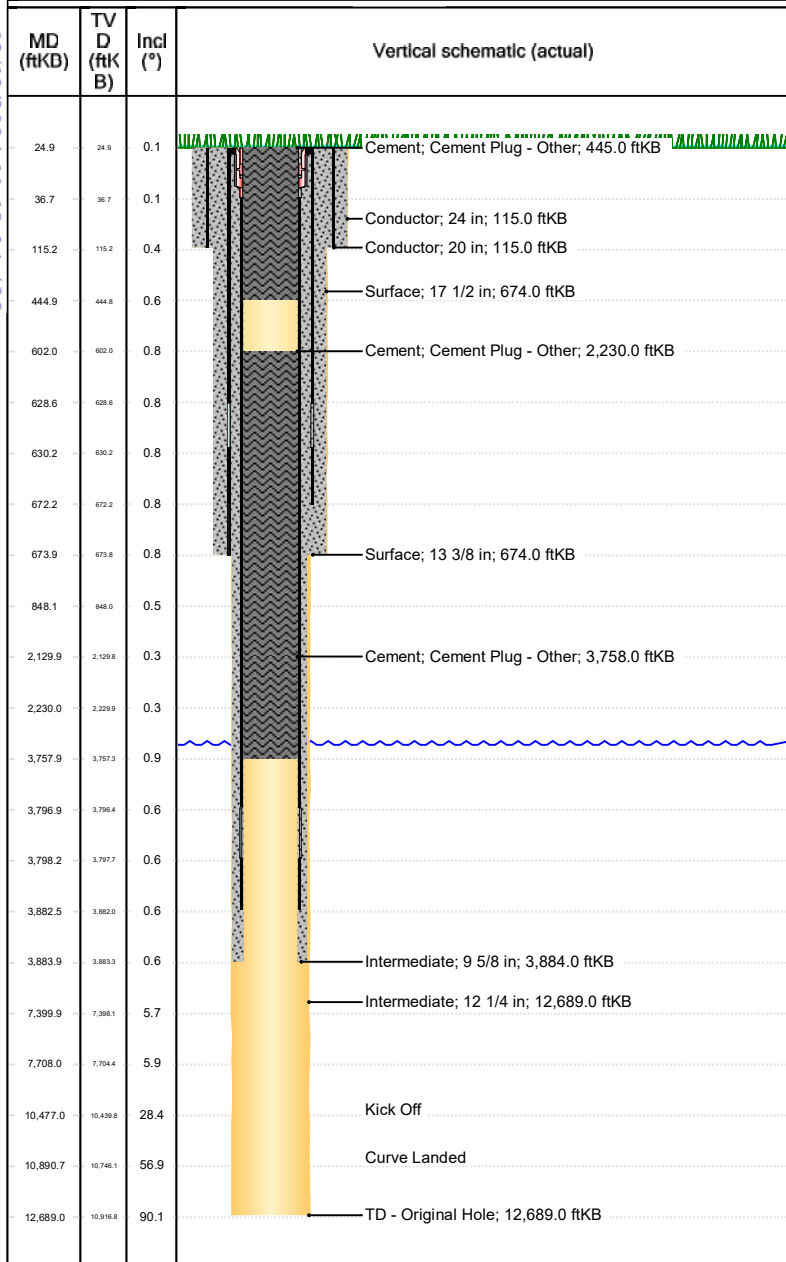
| Wellbores                      |                  |                                  |                |                                |
|--------------------------------|------------------|----------------------------------|----------------|--------------------------------|
| Wellbore Name<br>Original Hole |                  | Parent Wellbore<br>Original Hole |                | Wellbore API/UWI<br>3001543369 |
| Start Depth (ftKB)<br>25.0     |                  | Profile Type<br>Horizontal       |                |                                |
| Section Des                    | Hole Sz (in)     | Act Top (ftKB)                   | Act Btm (ftKB) |                                |
| Conductor                      | 24               | 25.0                             | 115.0          |                                |
| Surface                        | 17 1/2           | 115.0                            | 674.0          |                                |
| Intermediate                   | 12 1/4           | 674.0                            | 12,689.0       |                                |
| Casing Strings                 |                  |                                  |                |                                |
| Csg Des                        | Set Depth (ftKB) | OD (in)                          | Wt/Len (lb/ft) | Grade                          |
| Conductor                      | 115.0            | 20                               | 94.00          | J-55                           |
| Surface                        | 674.0            | 13 3/8                           | 54.50          | J55                            |
| Intermediate                   | 3,884.0          | 9 5/8                            | 40.00          | J-55                           |
| Cement                         |                  |                                  |                |                                |
| Des                            | Type             | Start Date                       | Top (ftKB)     | Btm (ftKB)                     |
| Conductor Casing Cement        | Casing           | 11/30/2017                       | 25.0           | 115.0                          |
| Surface Casing Cement          | Casing           | 12/24/2017                       | 25.0           | 674.0                          |
| Intermediate Casing Cement     | Casing           | 12/28/2017                       | 25.0           | 3,884.0                        |
| Cement Plug - P & A            | Plug             | 2/8/2018                         | 10,477.0       | 10,890.7                       |
| Cement Plug - P & A            | Plug             | 2/8/2018                         | 7,400.0        | 7,708.0                        |
| Cement Plug - P & A            | Plug             | 2/8/2018                         | 2,130.0        | 3,758.0                        |
| Cement Plug - P & A            | Plug             | 2/8/2018                         | 602.0          | 2,230.0                        |
| Cement Plug - P & A            | Plug             | 2/8/2018                         | 25.0           | 445.0                          |



## Downhole Well Profile - with Schematic

Well Name: James Ranch Unit DI 2 194H

|                                   |                               |  |                              |                |                                   |                                  |                                   |
|-----------------------------------|-------------------------------|--|------------------------------|----------------|-----------------------------------|----------------------------------|-----------------------------------|
| API/UWI<br>3001543369             | SAP Cost Center ID            | Permit Number<br>BLM                   | State/Province<br>New Mexico | County<br>Eddy | Ground Elevation (ft)<br>3,343.00 | KB-Ground Distance (ft)<br>25.00 | Surface Casing Flange Elevatio... |
| Surface Location<br>T22S-R30E-S25 | Spud Date<br>12/23/2017 15:00 | Original KB Elevation (ft)<br>3,368.00 |                              |                |                                   |                                  |                                   |



| Wellbores                      |                  |                                  |                            |                                |
|--------------------------------|------------------|----------------------------------|----------------------------|--------------------------------|
| Wellbore Name<br>Original Hole |                  | Parent Wellbore<br>Original Hole |                            | Wellbore API/UWI<br>3001543369 |
| Start Depth (ftKB)<br>25.0     |                  |                                  | Profile Type<br>Horizontal |                                |
| Section Des                    | Hole Sz (in)     | Act Top (ftKB)                   |                            | Act Btm (ftKB)                 |
| Conductor                      | 24               | 25.0                             |                            | 115.0                          |
| Surface                        | 17 1/2           | 115.0                            |                            | 674.0                          |
| Intermediate                   | 12 1/4           | 674.0                            |                            | 12,689.0                       |
| Casing Strings                 |                  |                                  |                            |                                |
| Csg Des                        | Set Depth (ftKB) | OD (in)                          | Wt/Len (lb/ft)             | Grade                          |
| Conductor                      | 115.0            | 20                               | 94.00                      | J-55                           |
| Surface                        | 674.0            | 13 3/8                           | 54.50                      | J55                            |
| Intermediate                   | 3,884.0          | 9 5/8                            | 40.00                      | J-55                           |
| Cement                         |                  |                                  |                            |                                |
| Des                            | Type             | Start Date                       | Top (ftKB)                 | Btm (ftKB)                     |
| Conductor Casing Cement        | Casing           | 11/30/2017                       | 25.0                       | 115.0                          |
| Surface Casing Cement          | Casing           | 12/24/2017                       | 25.0                       | 674.0                          |
| Intermediate Casing Cement     | Casing           | 12/28/2017                       | 25.0                       | 3,884.0                        |
| Cement Plug - P & A            | Plug             | 2/8/2018                         | 10,477.0                   | 10,890.7                       |
| Cement Plug - P & A            | Plug             | 2/8/2018                         | 7,400.0                    | 7,708.0                        |
| Cement Plug - P & A            | Plug             | 2/8/2018                         | 2,130.0                    | 3,758.0                        |
| Cement Plug - P & A            | Plug             | 2/8/2018                         | 602.0                      | 2,230.0                        |
| Cement Plug - P & A            | Plug             | 2/8/2018                         | 25.0                       | 445.0                          |

Sante Fe Main Office  
Phone: (505) 476-3441

General Information  
Phone: (505) 629-6116

Online Phone Directory  
<https://www.emnrd.nm.gov/oed/contact-us>

State of New Mexico  
Energy, Minerals and Natural Resources  
Oil Conservation Division  
1220 S. St Francis Dr.  
Santa Fe, NM 87505

CONDITIONS

Action 307220

CONDITIONS

|   |  |
|---|--|
| Operator:<br><br>XTO ENERGY, INC<br>6401 Holiday Hill Road<br>Midland, TX 79707 | OGRID:<br><br>5380                                 |
|   | Action Number:<br><br>307220                       |
|   | Action Type:<br><br>[C-103] Sub. Plugging (C-103P) |

CONDITIONS

| Created By | Condition | Condition Date |
|------------|-----------|----------------|
| gcordero   | None      | 12/12/2024     |