

Submit a Copy To Appropriate District
Office
District I – (575) 393-6161
1625 N. French Dr., Hobbs, NM 88240
District II – (575) 748-1283
811 S. First St., Artesia, NM 88210
District III – (505) 334-6178
1000 Rio Brazos Rd., Aztec, NM 87410
District IV – (505) 476-3460
1220 S. St. Francis Dr., Santa Fe, NM
87505

State of New Mexico
Energy, Minerals and Natural Resources

Form C-103
Revised July 18, 2013

OIL CONSERVATION DIVISION
1220 South St. Francis Dr.
Santa Fe, NM 87505

WELL API NO. 30-015-31132
5. Indicate Type of Lease STATE <input checked="" type="checkbox"/> FEE <input type="checkbox"/>
6. State Oil & Gas Lease No.
7. Lease Name or Unit Agreement Name OXY REMUDA STATE
8. Well Number #001
9. OGRID Number 192463
10. Pool name or Wildcat [39990] LOCO HILLS;WOLFCAMP

SUNDRY NOTICES AND REPORTS ON WELLS (DO NOT USE THIS FORM FOR PROPOSALS TO DRILL OR TO DEEPEN OR PLUG BACK TO A DIFFERENT RESERVOIR. USE "APPLICATION FOR PERMIT" (FORM C-101) FOR SUCH PROPOSALS.)	
1. Type of Well: Oil Well <input type="checkbox"/> Gas Well <input checked="" type="checkbox"/> Other	
2. Name of Operator OXY USA WTP LP	
3. Address of Operator PO BOX 4294, HOUSTON, TX 77210	
4. Well Location Unit Letter <u>K</u> : <u>1650</u> feet from the <u>SOUTH</u> line and <u>1980</u> feet from the <u>WEST</u> line Section <u>16</u> Township <u>18S</u> Range <u>29E</u> NMPM County <u>EDDY</u>	
11. Elevation (Show whether DR, RKB, RT, GR, etc.)	

12. Check Appropriate Box to Indicate Nature of Notice, Report or Other Data

NOTICE OF INTENTION TO:		SUBSEQUENT REPORT OF:	
PERFORM REMEDIAL WORK <input type="checkbox"/>	PLUG AND ABANDON <input type="checkbox"/>	REMEDIAL WORK <input type="checkbox"/>	ALTERING CASING <input type="checkbox"/>
TEMPORARILY ABANDON <input type="checkbox"/>	CHANGE PLANS <input type="checkbox"/>	COMMENCE DRILLING OPNS. <input type="checkbox"/>	P AND A <input checked="" type="checkbox"/>
PULL OR ALTER CASING <input type="checkbox"/>	MULTIPLE COMPL <input type="checkbox"/>	CASING/CEMENT JOB <input type="checkbox"/>	
DOWNHOLE COMMINGLE <input type="checkbox"/>			
CLOSED-LOOP SYSTEM <input type="checkbox"/>			
OTHER: <input type="checkbox"/>		OTHER: <input type="checkbox"/>	

13. Describe proposed or completed operations. (Clearly state all pertinent details, and give pertinent dates, including estimated date of starting any proposed work). SEE RULE 19.15.7.14 NMAC. For Multiple Completions: Attach wellbore diagram of proposed completion or recompletion.

THE FINAL WELLBORE AND PA PLUG NOTES ARE ATTACHED. THE WELLHEAD WAS CUT AND CAPPED ON 10/29/2024.

Spud Date:

Rig Release Date:

I hereby certify that the information above is true and complete to the best of my knowledge and belief.

SIGNATURE Stephen Janacek TITLE REGULATORY ENGINEER DATE 11/26/2024

Type or print name STEPHEN JANACEK E-mail address: STEPHEN_JANACEK@OXY.COM PHONE: 713-493-1986

For State Use Only

APPROVED BY: _____ TITLE _____ DATE _____

Conditions of Approval (if any):

Well Name: OXY REMUDA STATE #1
API 14: 30-015-31132-0000
STEPHEN JANACEK
11/26/2024

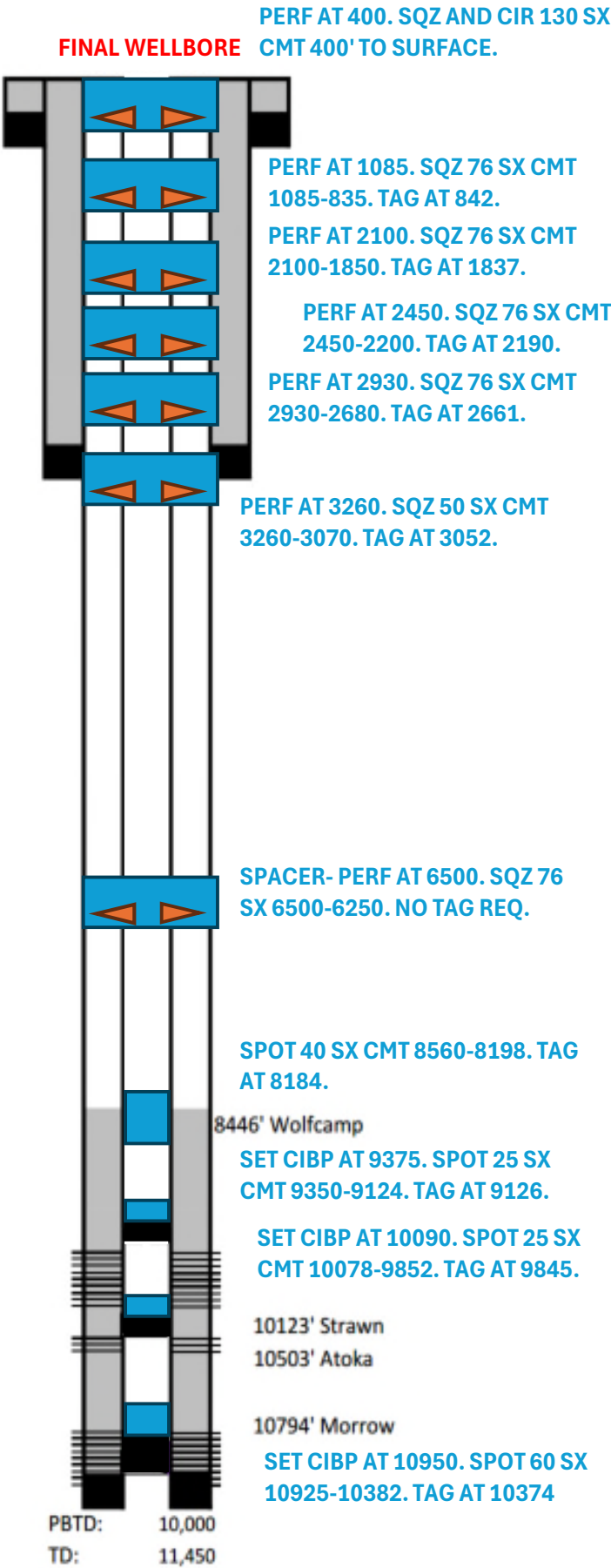
Surface Casing:
Hole Size: 17 1/2"
Casing Size: 13 3/8" @400'
Casing Weight: 48#
Cement Details: 1220 sxs to 0'
Circ 10 sxs @ surf

Intermediate Casing:
Hole Size: 12 1/4"
Casing Size: 9 5/8" @3,210'
Casing Weight: 36#
Cement Details: 1512 sxs to 0'
Circ 230 sxs @ surf

Production Casing:
Hole Size: 8 3/4"
Casing Size: 5 1/2" @11,450'
Casing Weight: 17#
Cement Details: 865 sxs to 8,150' (CBL)
Did NOT Circ @ surf

Liner:
Hole Size:
Casing Size:
Casing Weight:
Cement Details:

Tubing:
Tubing Size: 2 3/8"
Tubing Depth: 9,305'
Packer Depth: 9,305'
RBP: 10,000'
Perforations 9,407' - 9,417'
9,422' - 9,435'
9,644' - 9,650'
9,659' - 9,682'
RBP @10,000'
10,132' - 10,142'
11,049' - 11,053'
11,068' - 11,076'
11,087' - 11,090'
CMT 11,200' - 11,165'
CIBP @11,200'
11,215' - 11,230'



OXY REMUDA STATE #001
30-015-31132
PA Cement Notes

Job Start 9/23/2024

Job End 10/28/2024

Cut and Cap Complete on 10/29/2024

Sundry Requirements	Actual	Bottom	Top	Tag	NOTES
1) BALANCED PLUG	NMOCD 5.5" CIBP @ 10,950	10925'	10382'	10374'	1ST PLUG) SET 5.5" CIBP @ 10,950' BALANCED PLUG F/ 10,925' - 10,382' SPOT 60 SXS CLASS H CMT, 12.6 BBLS SLURRY, 15.6# 1.18 YIELD, PLUG CAP 543' / DISPLACE TOC TO 10,382' DISPLACE W/ 60.11 BBLS OF 10# BW
2) BALANCED PLUG	NMOCD 5.5" CIBP @ 10,090'	10078'	9852'	9845'	2ND PLUG) SET 5.5" CIBP @ 10,090' BALANCED PLUG F/ 10,078' - 9852' SPOT 25 SXS CLASS H CMT, 5.25 BBLS SLURRY, 15.6# 1.18 YIELD, 226' PLUG CAP / DISPLACE TOC TO 9852' DISPLACE W/ 57.04 BBLS OF 10# BW
3) BALANCED PLUG	NMOCD 5.5" CIBP @ 9375'	9350'	9124'	9126'	3RD PLUG) SET 5.5" CIBP @ 9375' BALANCED PLUG F/ 9350' - 9124' SPOT 25 SXS CLASS H CMT, 5.25 BBLS SLURRY, 15.6# 1.18 YIELD, 226' PLUG CAP / DISPLACE TOC TO 9124' DISPLACE W/ 52.82 BBLS OF 10# BW
4) BALANCED PLUG	NMOCD	8560'	8198'	8184'	4TH PLUG) BALANCED PLUG F/ 8560' - 8200' SPOT 40 SXS CLASS H CMT, 8.4 BBLS SLURRY, 15.6# 1.18 YIELD, 362' PLUG CAP / DISPLACE TOC TO 8198' DISPLACE W/ 47.46 BBLS OF 10# BW,
5) PERF / SQZ	NMOCD	6500'	6250'	N/T	5TH PLUG) SPACER PLUG PERF @ 6500' SQZ 76 SXS CLASS C CMT, 17.86 BBLS SLURRY, 14.8# 1.32 YIELD, (PLUG CAPACITY 250' / 24.67 SX / 5.8 BBLS SLURRY IN 5.5" PROD CSG) & (PLUG CAP 250' / 51.33 SX / 12.06 BBLS SLURRY IN 12-1/4" OPEN HOLE) DISPLACE TOC TO 6250' DISPLACE W/ 43.11 BBLS OF 10# BW, ISIP = 100 PSI, NO TAG REQUIRED
6) PERF / SQZ	NMOCD	3260'	3070'	3052'	6TH PLUG) PERF @ 3260' SQZ 50 SXS CLASS C CMT, W/ (R-1-11-P 2% CALCIUM CHLORIDE) 11.75 BBLS SLURRY, 14.8# 1.32 YIELD, 190' PLUG CAP IN / OUT / DISPLACE TOC TO 3070' / DISPLACE W/ 24.68 BBLS OF 10# BW, ISIP = 0 PSI
7) PERF / SQZ	NMOCD	2930'	2680'	2661'	7TH PLUG) PERF @ 2930' SQZ 76 SXS CLASS C CMT, 17.86 BBLS SLURRY, 14.8# 1.32 YIELD, (PLUG CAPACITY 250' / 24.67 SX / 5.8 BBLS SLURRY IN 5.5" PROD CSG) & (PLUG CAP 250' / 51.33 SX / 12.06 BBLS SLURRY IN 9-5/8" INTER CSG) / DISPLACE TOC TO 2680' / DISPLACE W/ 22.91 BBLS OF 10# BW, ISIP = 200 PSI
8) PERF / SQZ	NMOCD	2450'	2200'	2190'	8TH PLUG) PERF @ 2450' SQZ 76 SXS CLASS C CMT, W/ (R-1-11-P 2% CALCIUM CHLORIDE) 17.86 BBLS SLURRY, 14.8# 1.32 YIELD, (PLUG CAPACITY 250' / 24.67 SX / 5.8 BBLS SLURRY IN 5.5" PROD CSG) & (PLUG CAP 250' / 51.33 SX / 12.06 BBLS SLURRY IN 9-5/8" INTER CSG) / DISPLACE TOC TO 2200' / DISPLACE W/ 18.49 BBLS OF 10# BW, ISIP = 400 PS
9) PERF / SQZ	NMOCD	2100'	1850'	1837'	9TH PLUG) PERF @ 2100' SQZ 76 SXS CLASS C CMT, W/ (R-1-11-P 2% CALCIUM CHLORIDE) 17.86 BBLS SLURRY, 14.8# 1.32 YIELD, (PLUG CAPACITY 250' / 24.67 SX / 5.8 BBLS SLURRY IN 5.5" PROD CSG) & (PLUG CAP 250' / 51.33 SX / 12.06 BBLS SLURRY IN 9-5/8" INTER CSG) / DISPLACE TOC TO 1850' / DISPLACE W/ 16.58 BBLS OF 10# BW, ISIP = 500 PSI
10) PERF / SQZ	NMOCD	1085'	835'	842'	10TH PLUG) PERF @ 1085' SQZ 76 SXS CLASS C CMT, W/ (R-1-11-P 2% CALCIUM CHLORIDE) 17.86 BBLS SLURRY, 14.8# 1.32 YIELD, (PLUG CAPACITY 250' / 24.67 SX / 5.8 BBLS SLURRY IN 5.5" PROD CSG) & (PLUG CAP 250' / 51.33 SX / 12.06 BBLS SLURRY IN 9-5/8" INTER CSG) / DISPLACE TOC TO 835' / DISPLACE W/ 11.15 BBLS OF 10# BW, ISIP = 500 PSI
11) SURFACE PLUG PERF / SQZ	SHOT HOLES @ 400' EST - INJ RATE 2.5 BPM W/ 200 PSI GETTING FULL RETURNS ON THE 9-5/8" INTER CSG	400'	PROD.CS G	TOP OFF HOLE W/ CMT	11TH PLUG) PERF @ 400' SQZ 130 SXS CL C CMT, 30.56 BBLS SLURRY, 14.8# 1.32 YIELD (PLUG CAPACITY 400' / 39.47 SX / 9.28 BBLS SLURRY IN 5.5" PROD CSG) & (PLUG CAPACITY 400' / 90.53 SX / 21.28 BBLS SLURRY IN 9-5/8" INTER CSG) F/ 400' - 0' (SURF) GOT FULL RETURNS ON 9-5/8" INTER CSG CLOSE VALVE LEFT 500 PSI ON PROD CSG, WOC TOP OFF HOLE W/ CMT VERIFY CMT AT SURF / RU ON 13-3/8" SURF - CSG TRY TO PUMP CMT W/ NO LUCK 13-3/8" SURF - CSG PSI UP TO 500 PSI W/ NO LEAK OFF.

Sante Fe Main Office
Phone: (505) 476-3441

General Information
Phone: (505) 629-6116

Online Phone Directory
<https://www.emnrd.nm.gov/oed/contact-us>

State of New Mexico
Energy, Minerals and Natural Resources
Oil Conservation Division
1220 S. St Francis Dr.
Santa Fe, NM 87505

CONDITIONS

Action 406651

CONDITIONS

Operator: OXY USA WTP LIMITED PARTNERSHIP P.O. Box 4294 Houston, TX 772104294	OGRID: 192463
	Action Number: 406651
	Action Type: [C-103] Sub. Plugging (C-103P)

CONDITIONS

Created By	Condition	Condition Date
gcordero	Clean Location in accordance with 19.15.25.10 NMAC.	12/13/2024
gcordero	Submit C-103Q within one year of plugging.	12/13/2024