

U.S. Department of the Interior
BUREAU OF LAND MANAGEMENT

Well Name: PAYNE

Well Location: T30N / R11W / SEC 35 / SWSE / 36.76448 / -107.95706

County or Parish/State: SAN JUAN / NM

Well Number: 2

Type of Well: CONVENTIONAL GAS WELL

Allottee or Tribe Name:

Lease Number: NMSF079962

Unit or CA Name: PAYNE

Unit or CA Number: NMNM133450, NMNM73515

US Well Number: 3004508943

Operator: HILCORP ENERGY COMPANY

Subsequent Report

Sundry ID: 2827620

Type of Submission: Subsequent Report

Type of Action: Plug and Abandonment

Date Sundry Submitted: 12/16/2024

Time Sundry Submitted: 10:08

Date Operation Actually Began: 12/12/2024

Actual Procedure: Hilcorp Energy Company plugged and abandoned the subject well on 12/13/2024 per the attached report.

SR Attachments

Actual Procedure

PAYNE_2_P_A_SR_BLM_Submitted_20241216100740.pdf

Well Name: PAYNE

Well Location: T30N / R11W / SEC 35 / SWSE / 36.76448 / -107.95706

County or Parish/State: SAN JUAN / NM

Well Number: 2

Type of Well: CONVENTIONAL GAS WELL

Allottee or Tribe Name:

Lease Number: NMSF079962

Unit or CA Name: PAYNE

Unit or CA Number: NMNM133450, NMNM73515

US Well Number: 3004508943

Operator: HILCORP ENERGY COMPANY

Operator

I certify that the foregoing is true and correct. Title 18 U.S.C. Section 1001 and Title 43 U.S.C. Section 1212, make it a crime for any person knowingly and willfully to make to any department or agency of the United States any false, fictitious or fraudulent statements or representations as to any matter within its jurisdiction. Electronic submission of Sundry Notices through this system satisfies regulations requiring a

Operator Electronic Signature: PRISCILLA SHORTY

Signed on: DEC 16, 2024 10:08 AM

Name: HILCORP ENERGY COMPANY

Title: Regulatory Technician

Street Address: 382 ROAD 3100

City: AZTEC

State: NM

Phone: (505) 324-5188

Email address: PSHORTY@HILCORP.COM

Field

Representative Name:

Street Address:

City:

State:

Zip:

Phone:

Email address:

BLM Point of Contact

BLM POC Name: MATTHEW H KADE

BLM POC Title: Petroleum Engineer

BLM POC Phone: 5055647736

BLM POC Email Address: MKADE@BLM.GOV

Disposition: Accepted

Disposition Date: 12/16/2024

Signature: Matthew Kade

PAYNE 2**30.045.08943****PLUG AND ABANDONMENT**

12/11/2024 – HEC ENGINEER EMAILED BLM AND NMOCD DOCUMENTING VERBAL APPROVAL TO P&A THE SUBJECT AFTER AN UNSUCCESSFUL REMEDIAL WORK. AFTER REVIEWING THE P&A PROCEDURE, IT WAS UPDATED TO PERFORATE AT 1000' INSTEAD OF 982'.

12/12/2024 - SITP: N/A, SICP: 0 PSI; SIBHP: 0 PSI, BDW: 0 MIN. NO PRESSURE ON WELL. M/U HEC 5-1/2" CICR. TIH. SET CICR AT 1910'. MIRU HEC CEMENT PACKAGE. PT LINES (GOOD). ESTABLISH INJECTION RATE AND PRESSURE (1.5 BPM AT 0 PSI). LOAD CSG W/ 24 BBL WATER. PT CSG (LOST 500 PSI IN 30 SEC). **MIX AND PUMP 33 SX, 37 CU FT, 1.15 YIELD, 15.8 PPG, 6.9 BBL SLURRY, 3.9 BBL MIX, CLASS G CEMENT NEAT TO SQUEEZE FRUITLAND AND PICTURED CLIFFS PRODUCTION PERFS. DISPLACE TO EOT (EST TOC @ 1,910' & EST BOC @ 2,190'). STING OUT OF CICR. ESTABLISH CIRCULATION. MIX AND PUMP 27 SX, 31.05 CU FT, 1.15 YIELD, 15.8 PPG, 5.5 BBL SLURRY, 3.2 BBL MIX, CLASS G CEMENT W/ 2% CACL. BALANCED PLUG W/ 6.4 BBL TO ISOLATE FRUITLAND COAL AND PICTURED CLIFFS FORMATIONS. EST TOC @ 1,682' & EST BOC 1,910'. TOTAL OF 60 SXS. L/D TBG TO 1757'. TOO H W/ TBG TO 1143'. REVERSE CIRC. WOC. TIH. TAG TOC #1 AT 1735'. RECEIVED APPROVAL TO CONTINUE. L/D TBG TO 916'. TOO H W/ REMAINING TBG. MIRU TWG. N/D STRIPPING HEAD. N/U WL PACK OFF FLANGE. RIH AND SHOOT SQUEEZE HOLES AT 1000'. POOH. ESTABLISH INJ RATE AND PRESSURE DOWN CSG (2 BPM AT 500 PSI). N/D PACK OFF FLANGE. N/U STRIPPING HEAD. RDR TWG. SISW. WINTERIZE EQUIPMENT. DEBRIEFED CREW. SDFN.**

12/13/2024 – SITP: N/A, SICP: 0 PSI; SIBHP: 0 PSI, BDW: 0 MIN. NO PRESSURE ON WELL. WARM UP EQUIPMENT. M/U HEC 5-1/2" CICR. TIH. SET CICR AT 942'. R/U HEC CEMENT PACKAGE. PT LINES (GOOD). STING OUT. LOAD CASING W/ 20 BBL. PT CSG (LOST 300 PSI/MIN). STING INTO CICR. ESTABLISH INJECTION RATE AND PRESSURE (2 BPM AT 700 PSI). **MIX AND PUMP PLUG #2 STARTING WITH 49 SX BELOW THE CICR @ 942' (56.4 CUFT, 1.15 YIELD, 15.8 PPG) CLASS G NEAT CEMENT TO ISOLATE THE KIRTLAND, OJO ALAMO FORMATION, WITH 7 SX INSIDE 5 1/2" CASING (EST TOC @ 942' & EST BOC @ 1000') & 42 SX IN 7 5/8" X 5-1/2" ANNULUS (EST TOC @ 688' & EST BOC @ 1000').** INJECTION RATE OF 2BPM AT 700 PSI. STING OUT OF RETAINER. EST CICR. **CONTINUE PUMPING PLUG #2: MIX AND PUMP 139 SX, 159.85 CU FT, 1.15 YIELD, 15.8 PPG, 28.4 BBL SLURRY, 16.5 BBL MIX, CLASS G CEMENT W/ 2% CACL (EST TOC @ SURFACE & EST BOC @ 942').** CIRCULATE TOTAL OF 3 BBL CMT TO SURFACE TO ISOLATE THE KIRTLAND AND OJO FORMATIONS, AND THE SURFACE SHOE AT 136'. (HEC ENGINEER SENT AN EMAIL TO COMBINE PLUG #2 AND 3 W/ NMOCD AND BLM APPROVAL). L/D ALL TBG. R/D FLOOR. N/D BOP. WASH UP. WOC. EXCAVATE SURFACE CSG. CUT OFF WH. FOUND TOP OF CMNT AT 88' IN 5 1/2" CASING AND 1.5' IN 5 1/2" X 7 5/8" CASING. TOP OFF 5-1/2" W/ 12SX. TOP OFF ANNULUS AND CELLAR WITH 10 SX. INSTALL D/H MARKER. TOP OFF WELL. RD RR.

WELL WAS PLUGGED AND ABANDONED ON 12/13/2024.

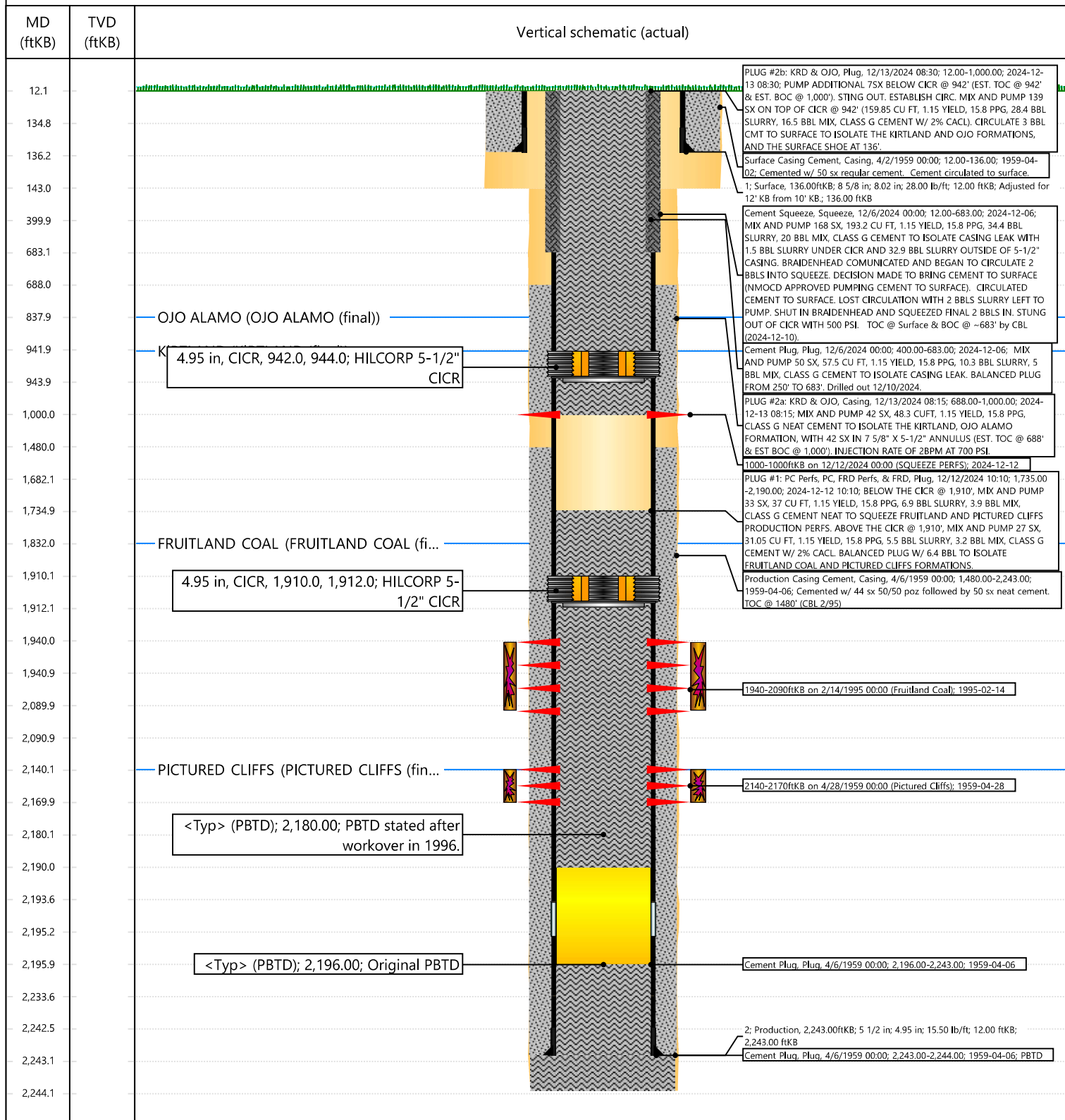


Current Schematic - Version 3

Well Name: **PAYNE #2**

API / UWI 3004508943	Surface Legal Location 035-030N-011W-O	Field Name BSN (FTLD COAL) #3046	Route 0701	State/Province NEW MEXICO	Well Configuration Type Vertical
Ground Elevation (ft) 5,806.00	Original KB/RT Elevation (ft) 5,818.00	Tubing Hanger Elevation (ft)	RKB to GL (ft) 12.00	KB-Casing Flange Distance (ft)	KB-Tubing Hanger Distance (ft)
Tubing Strings					
Run Date 10/30/2018 15:30	Set Depth (ftKB) 2,155.23	String Max Nominal OD (in) 2 3/8	String Min Nominal ID (in) 2.00	Weight/Length (lb/ft) 4.70	Original Spud Date 4/2/1959 00:00

Original Hole [Vertical]



Priscilla Shorty

From: Kuehling, Monica, EMNRD <monica.kuehling@emnrd.nm.gov>
Sent: Monday, December 16, 2024 7:27 AM
To: Rennick, Kenneth G; John LaMond; Priscilla Shorty; Kade, Matthew H; Wenman, Christopher P; Herrera, Roger D; Dale Crawford; Chad Perkins; Lucero, Virgil S; Porch, Dustin T; Mason, Lucas E; Cheryl Weston
Cc: Farmington Regulatory Techs; Clay Padgett; Lee Murphy; Rustin Mikeska; Trey Misuraca; Jon Knight - (C); Issac Overright - (C)
Subject: RE: [EXTERNAL] RE: Request to P&A Hilcorp's PAYNE 2 (API # 3004508943)

CAUTION: External sender. DO NOT open links or attachments from UNKNOWN senders.

NMOCD approved verbally

Monica Kuehling
Compliance Officer Supervisor
Deputy Oil and Gas Inspector
New Mexico Oil Conservation Division
North District
Cell Phone: 505-320-0243
Email - monica.kuehling@emnrd.nm.gov

From: Rennick, Kenneth G <krennick@blm.gov>
Sent: Friday, December 13, 2024 7:24 AM
To: John LaMond <jlamond@hilcorp.com>; Kuehling, Monica, EMNRD <monica.kuehling@emnrd.nm.gov>; Priscilla Shorty <pshorty@hilcorp.com>; Kade, Matthew H <mkade@blm.gov>; Wenman, Christopher P <cwenman@blm.gov>; Herrera, Roger D <RHerrera@blm.gov>; Dale Crawford <dcrawford@hilcorp.com>; Chad Perkins <cperkins@hilcorp.com>; Lucero, Virgil S <vlucero@blm.gov>; Porch, Dustin T <dporch@blm.gov>; Mason, Lucas E <lmason@blm.gov>; cweston <cweston@hilcorp.com>
Cc: Farmington Regulatory Techs <FarmingtonRegulatoryTechs@hilcorp.com>; Clay Padgett <cpadgett@hilcorp.com>; Lee Murphy <lmurphy@hilcorp.com>; Rustin Mikeska <rmikeska@hilcorp.com>; Trey Misuraca <Trey.Misuraca@hilcorp.com>; Jon Knight - (C) <Jon.Knight@hilcorp.com>; Issac Overright - (C) <Issac.Overright@hilcorp.com>
Subject: Re: [EXTERNAL] RE: Request to P&A Hilcorp's PAYNE 2 (API # 3004508943)

To confirm, the BLM finds the procedure appropriate.

Get [Outlook for iOS](#)

From: John LaMond <jlamond@hilcorp.com>
Sent: Friday, December 13, 2024 7:21 AM
To: Kuehling Monica EMNRD <monica.kuehling@emnrd.nm.gov>; Rennick, Kenneth G <krennick@blm.gov>; Priscilla Shorty <pshorty@hilcorp.com>; Cheryl Weston <cweston@hilcorp.com>; Kade, Matthew H <mkade@blm.gov>; Wenman, Christopher P <cwenman@blm.gov>; Herrera, Roger D <RHerrera@blm.gov>;

Dale Crawford <dcrawford@hilcorp.com>; Chad Perkins <cperkins@hilcorp.com>; Lucero, Virgil S <vlucero@blm.gov>; Porch, Dustin T <dporch@blm.gov>

Cc: Farmington Regulatory Techs <FarmingtonRegulatoryTechs@hilcorp.com>; Clay Padgett <cpadgett@hilcorp.com>; Lee Murphy <lmurphy@hilcorp.com>; Rustin Mikeska <rmikeska@hilcorp.com>; Trey Misuraca <Trey.Misuraca@hilcorp.com>; Jon Knight - (C) <Jon.Knight@hilcorp.com>; Issac Overright - (C) <Issac.Overright@hilcorp.com>; Jon Knight - (C) <Jon.Knight@hilcorp.com>; Issac Overright - (C) <Issac.Overright@hilcorp.com>

Subject: Re: [EXTERNAL] RE: Request to P&A Hilcorp's PAYNE 2 (API # 3004508943)

Good morning Kenny and Monica,

Per our conversations, Hilcorp received verbal approval from the NMOCD and BLM to combine PLUG #2 & #3. After setting the CICR @ 942' and pumping the approved cement volume below the CICR, Hilcorp will then pump cement on top of the CICR from 942' to surface.

Thanks,

John LaMond

Sent from my iPhone

On Dec 11, 2024, at 3:41 PM, John LaMond <jlamond@hilcorp.com> wrote:

Thank you! Attaching Priscilla's previous email (with the approved NOI) here so that everything is on the same email chain. Will use this chain for correspondence moving forward.

Thanks,

John LaMond

Operations Engineer – Technical Services

Hilcorp Energy Company

1111 Travis

Houston, TX 77002

346-237-2210 (Office)

832-754-9692 (Cell)

jlamond@hilcorp.com

From: Kuehling, Monica, EMNRD <monica.kuehling@emnrn.nm.gov>

Sent: Wednesday, December 11, 2024 3:00 PM

To: Rennick, Kenneth G <krennick@blm.gov>; John LaMond <jlamond@hilcorp.com>; Priscilla Shorty <pshorty@hilcorp.com>; Cheryl Weston <cweston@hilcorp.com>; Kade, Matthew H <mkade@blm.gov>; Wenman, Christopher P <cwenman@blm.gov>; Herrera, Roger D <RHerrera@blm.gov>; Dale Crawford <dcrawford@hilcorp.com>; Chad Perkins <cperkins@hilcorp.com>; Lucero, Virgil S <vlucero@blm.gov>; Porch, Dustin T <dporch@blm.gov>

Cc: Farmington Regulatory Techs <FarmingtonRegulatoryTechs@hilcorp.com>; Clay Padgett <cpadgett@hilcorp.com>; Lee Murphy <lmurphy@hilcorp.com>; Rustin Mikeska

<rmikeska@hilcorp.com>; Trey Misuraca <Trey.Misuraca@hilcorp.com>; Jon Knight - (C) <Jon.Knight@hilcorp.com>; Issac Overright - (C) <Issac.Overright@hilcorp.com>
Subject: RE: [EXTERNAL] RE: Request to P&A Hilcorp's PAYNE 2 (API # 3004508943)

CAUTION: External sender. DO NOT open links or attachments from UNKNOWN senders.

NMOCD approves perfring at 1000 feet.

Thank you

Monica Kuehling
Compliance Officer Supervisor
Deputy Oil and Gas Inspector
New Mexico Oil Conservation Division
North District
Cell Phone: 505-320-0243
Email - monica.kuehling@emnrd.nm.gov

From: Rennick, Kenneth G <krennick@blm.gov>
Sent: Wednesday, December 11, 2024 1:42 PM
To: John LaMond <jlamond@hilcorp.com>; Priscilla Shorty <pshorty@hilcorp.com>; Cheryl Weston <cweston@hilcorp.com>; Kuehling, Monica, EMNRD <monica.kuehling@emnrd.nm.gov>; Kade, Matthew H <mkade@blm.gov>; Wenman, Christopher P <cwenman@blm.gov>; Herrera, Roger D <RHerrera@blm.gov>; Dale Crawford <dcrawford@hilcorp.com>; Chad Perkins <cperkins@hilcorp.com>; Lucero, Virgil S <vlucero@blm.gov>; Porch, Dustin T <dporch@blm.gov>
Cc: Farmington Regulatory Techs <FarmingtonRegulatoryTechs@hilcorp.com>; Clay Padgett <cpadgett@hilcorp.com>; Lee Murphy <lmurphy@hilcorp.com>; Rustin Mikeska <rmikeska@hilcorp.com>; Trey Misuraca <Trey.Misuraca@hilcorp.com>; Jon Knight - (C) <Jon.Knight@hilcorp.com>; Issac Overright - (C) <Issac.Overright@hilcorp.com>
Subject: Re: [EXTERNAL] RE: Request to P&A Hilcorp's PAYNE 2 (API # 3004508943)

The BLM finds the procedure appropriate.

From: John LaMond <jlamond@hilcorp.com>
Sent: Wednesday, December 11, 2024 1:37 PM
To: Priscilla Shorty <pshorty@hilcorp.com>; Rennick, Kenneth G <krennick@blm.gov>; Cheryl Weston <cweston@hilcorp.com>; Kuehling, Monica, EMNRD <monica.kuehling@emnrd.nm.gov>; Kade, Matthew H <mkade@blm.gov>; Wenman, Christopher P <cwenman@blm.gov>; Herrera, Roger D <RHerrera@blm.gov>; Dale Crawford <dcrawford@hilcorp.com>; Chad Perkins <cperkins@hilcorp.com>; Lucero, Virgil S <vlucero@blm.gov>; Porch, Dustin T <dporch@blm.gov>
Cc: Farmington Regulatory Techs <FarmingtonRegulatoryTechs@hilcorp.com>; Clay Padgett <cpadgett@hilcorp.com>; Lee Murphy <lmurphy@hilcorp.com>; Rustin Mikeska <rmikeska@hilcorp.com>; Trey Misuraca <Trey.Misuraca@hilcorp.com>; Jon Knight - (C) <Jon.Knight@hilcorp.com>; Issac Overright - (C) <Issac.Overright@hilcorp.com>; John LaMond <jlamond@hilcorp.com>
Subject: RE: [EXTERNAL] RE: Request to P&A Hilcorp's PAYNE 2 (API # 3004508943)

Monica and Kenny,

Per the BLM's request, I have updated the procedure to reflect perforating @ 1,000' instead of 982'.

Do the NMOCD & BLM approve?

<image001.jpg>

Thanks,

John LaMond

Operations Engineer – Technical Services
Hilcorp Energy Company
1111 Travis
Houston, TX 77002
346-237-2210 (Office)
832-754-9692 (Cell)
jlamond@hilcorp.com

From: Priscilla Shorty <pshorty@hilcorp.com>
Sent: Wednesday, December 11, 2024 2:30 PM
To: Rennick, Kenneth G <krennick@blm.gov>; John LaMond <jlamond@hilcorp.com>; Cheryl Weston <cweston@hilcorp.com>; Kuehling, Monica, EMNRD <monica.kuehling@emnrd.nm.gov>; Kade, Matthew H <mkade@blm.gov>; Wenman, Christopher P <cwenman@blm.gov>; Herrera, Roger D <RHerrera@blm.gov>; Dale Crawford <dcrawford@hilcorp.com>; Chad Perkins <cperkins@hilcorp.com>; Lucero, Virgil S <vlucero@blm.gov>; Porch, Dustin T <dporch@blm.gov>
Cc: Farmington Regulatory Techs <FarmingtonRegulatoryTechs@hilcorp.com>; Clay Padgett <cpadgett@hilcorp.com>; Lee Murphy <lmurphy@hilcorp.com>; Rustin Mikeska <rmikeska@hilcorp.com>; Trey Misuraca <Trey.Misuraca@hilcorp.com>; Jon Knight - (C) <Jon.Knight@hilcorp.com>; Issac Overright - (C) <Issac.Overright@hilcorp.com>
Subject: RE: [EXTERNAL] RE: Request to P&A Hilcorp's PAYNE 2 (API # 3004508943)

The NOI has been in AFMSS, **SUNDRY ID: 2827010**.

Once approved, it will be submitted to OCD.

Thanks,

Priscilla Shorty

Operations Regulatory Technician
Hilcorp Energy Company
505-324-5188
pshorty@hilcorp.com

From: Rennick, Kenneth G <krennick@blm.gov>
Sent: Wednesday, December 11, 2024 1:21 PM
To: John LaMond <jlamond@hilcorp.com>; Cheryl Weston <cweston@hilcorp.com>; Kuehling, Monica, EMNRD <monica.kuehling@emnrd.nm.gov>; Kade, Matthew H <mkade@blm.gov>; Wenman, Christopher P <cwenman@blm.gov>; Herrera, Roger D <RHerrera@blm.gov>; Dale Crawford <dcrawford@hilcorp.com>; Chad Perkins <cperkins@hilcorp.com>; Lucero, Virgil S <vlucero@blm.gov>;

Porch, Dustin T <dporch@blm.gov>

Cc: Farmington Regulatory Techs <FarmingtonRegulatoryTechs@hilcorp.com>; Clay Padgett <cpadgett@hilcorp.com>; Lee Murphy <lmurphy@hilcorp.com>; Rustin Mikeska <rmikeska@hilcorp.com>; Trey Misuraca <Trey.Misuraca@hilcorp.com>; Jon Knight - (C) <Jon.Knight@hilcorp.com>; Issac Overright - (C) <Issac.Overright@hilcorp.com>

Subject: Re: [EXTERNAL] RE: Request to P&A Hilcorp's PAYNE 2 (API # 3004508943)

CAUTION: External sender. DO NOT open links or attachments from UNKNOWN senders.

To confirm the BLM finds the proposed plugging work appropriate. Please submit a notice in the AFMSS system as soon as possible.

We do request that in step 9, the perforation for the Kirtland/ Ojo Alamo plug is done below the 992 casing collar. Not above.

Kenny Rennick

Kenneth (Kenny) Rennick

Petroleum Engineer

Bureau of Land Management
Farmington Field Office
6251 College Blvd
Farmington, NM 87402

Email: krennick@blm.gov

Mobile & Text: 505.497.0019

From: John LaMond <jlamond@hilcorp.com>

Sent: Wednesday, December 11, 2024 1:12 PM

To: Cheryl Weston <cweston@hilcorp.com>; Rennick, Kenneth G <krennick@blm.gov>; Kuehling, Monica, EMNRD <monica.kuehling@emnrd.nm.gov>; Kade, Matthew H <mkade@blm.gov>; Wenman, Christopher P <cwenman@blm.gov>; Herrera, Roger D <RHerrera@blm.gov>; Dale Crawford <dcrawford@hilcorp.com>; Chad Perkins <cperkins@hilcorp.com>

Cc: Farmington Regulatory Techs <FarmingtonRegulatoryTechs@hilcorp.com>; Clay Padgett <cpadgett@hilcorp.com>; Lee Murphy <lmurphy@hilcorp.com>; Rustin Mikeska <rmikeska@hilcorp.com>; Trey Misuraca <Trey.Misuraca@hilcorp.com>; Jon Knight - (C) <Jon.Knight@hilcorp.com>; Issac Overright - (C) <Issac.Overright@hilcorp.com>

Subject: [EXTERNAL] RE: Request to P&A Hilcorp's PAYNE 2 (API # 3004508943)

This email has been received from outside of DOI - Use caution before clicking on links, opening attachments, or responding.

Monica & Kenny,

Please note that the CBL (12/10/2024) shows TOC @ surface. I have updated the schematic (attached) to reflect that.

Thanks,

John LaMond

Operations Engineer – Technical Services
Hilcorp Energy Company
1111 Travis
Houston, TX 77002
346-237-2210 (Office)
832-754-9692 (Cell)
jlamond@hilcorp.com

From: Cheryl Weston <cweston@hilcorp.com>
Sent: Wednesday, December 11, 2024 2:03 PM
To: John LaMond <jlamond@hilcorp.com>; Rennick, Kenneth G <krennick@blm.gov>; Kuehling, Monica, EMNRD <monica.kuehling@emnrd.nm.gov>; Kade, Matthew H <mkade@blm.gov>; Wenman, Christopher <cwenman@blm.gov>; Herrera, Roger D <RHerrera@blm.gov>; Dale Crawford <dcrawford@hilcorp.com>; Chad Perkins <cperkins@hilcorp.com>
Cc: Farmington Regulatory Techs <FarmingtonRegulatoryTechs@hilcorp.com>; Clay Padgett <cpadgett@hilcorp.com>; Lee Murphy <lmurphy@hilcorp.com>; Rustin Mikeska <rmikeska@hilcorp.com>; Trey Misuraca <Trey.Misuraca@hilcorp.com>; Jon Knight - (C) <Jon.Knight@hilcorp.com>; Issac Overright - (C) <Issac.Overright@hilcorp.com>
Subject: RE: Request to P&A Hilcorp's PAYNE 2 (API # 3004508943)

I'm adding Chris Wenman and Roger Herrera to this string for P&A onsite purposes.

Chris/Roger: May we please get a waiver on the P&A onsite requirement until after the well is plugged? As you can see below, the rig is on the well currently.

Thanks,

Cheryl Weston

San Juan North Operations/Regulatory Tech-Sr.
1111 Travis Street | Houston, TX 77002
Ofc: 713.289.2615 | cweston@hilcorp.com
<image002.jpg>

From: John LaMond <jlamond@hilcorp.com>
Sent: Wednesday, December 11, 2024 1:50 PM

To: Rennick, Kenneth G <krennick@blm.gov>; Kuehling, Monica, EMNRD <monica.kuehling@emnrd.nm.gov>; Kade, Matthew H <mkade@blm.gov>
Cc: Farmington Regulatory Techs <FarmingtonRegulatoryTechs@hilcorp.com>; Clay Padgett <cpadgett@hilcorp.com>; Lee Murphy <lmurphy@hilcorp.com>; Rustin Mikeska <rmikeska@hilcorp.com>; John LaMond <jlamond@hilcorp.com>; Trey Misuraca <Trey.Misuraca@hilcorp.com>; Jon Knight - (C) <Jon.Knight@hilcorp.com>; Issac Overright - (C) <Issac.Overright@hilcorp.com>
Subject: Request to P&A Hilcorp's PAYNE 2 (API # 3004508943)

Good afternoon Monica and Kenny,

Per our discussion on the phone this morning, Hilcorp is currently rigged up on the PAYNE 2 (API # 3004508943). After attempts to remediate the well, Hilcorp is requesting to move forward with P&A operations on the well.

Hilcorp received verbal approval from the NMOCD & BLM to commence P&A operations. Moving forward, Hilcorp requests to P&A this well as follows:

<image003.jpg>

This procedure as well as the updated wellbore schematic is attached along with the recently run CBL (12/10/2024).

Please note that we will formally submit this well to the NMOCD website.

Does Hilcorp have NMOCD & BLM approval to proceed?

Please let me know if you have any questions.

Thanks,

John LaMond

Operations Engineer – Technical Services
Hilcorp Energy Company
1111 Travis
Houston, TX 77002
346-237-2210 (Office)
832-754-9692 (Cell)
jlamond@hilcorp.com

The information contained in this email message is confidential and may be legally privileged and is intended only for the use of the individual or entity named above. If you are not an intended recipient or if you have received this message in error, you are hereby notified that any dissemination, distribution, or copy of this email is strictly prohibited. If you have received this email in error, please immediately notify us by return email or telephone if the sender's phone number is listed above, then promptly and permanently delete this message.

While all reasonable care has been taken to avoid the transmission of viruses, it is the responsibility of the recipient to ensure that the onward transmission, opening, or use of this message and any attachments will not adversely affect its systems or data. No responsibility is accepted by the company in this regard and the recipient should carry out such virus and other checks as it considers appropriate.

Sante Fe Main Office
Phone: (505) 476-3441

General Information
Phone: (505) 629-6116

Online Phone Directory
<https://www.emnrd.nm.gov/ocd/contact-us>

State of New Mexico
Energy, Minerals and Natural Resources
Oil Conservation Division
1220 S. St Francis Dr.
Santa Fe, NM 87505

CONDITIONS

Action 412552

CONDITIONS

Operator: HILCORP ENERGY COMPANY 1111 Travis Street Houston, TX 77002	OGRID: 372171
	Action Number: 412552
	Action Type: [C-103] Sub. Plugging (C-103P)

CONDITIONS

Created By	Condition	Condition Date
mkuehling	CBL ran during remediation attempt in log file Well plugged 12/13/2024	12/16/2024