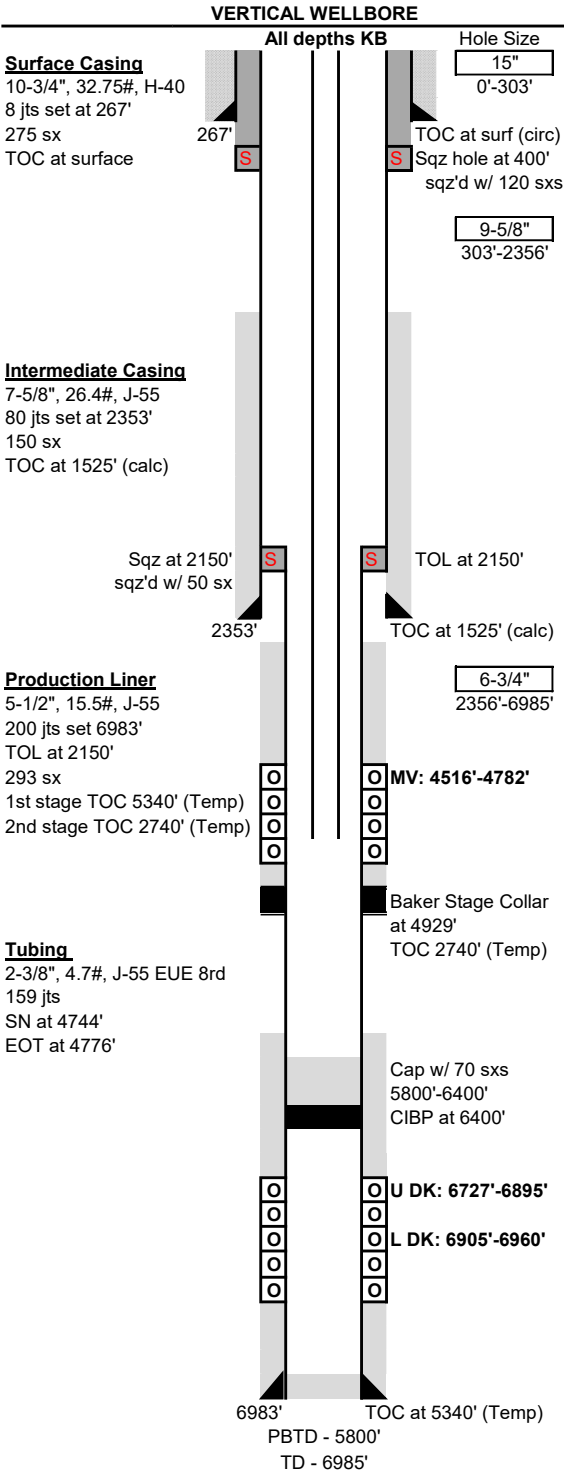




Wellbore Schematic

Well Name:	Wright State Com 1
Location:	Sec 36, T32N, R13W 1000' FNL & 1780' FEL
County:	San Juan, NM
API #:	30-045-11201
Co-ordinates:	Lat 36.9476471 Long -108.1518631 NAD83
Elevations:	GROUND: 5836'
	KB: 5846'
Depths (KB):	PBTD: 5800'
	TD: 6985'

Prepared By:	12/6/2024 Sullivan
Reviewed by:	Dec 12, 2024 <i>Audrey Wilson</i>
Last Updated:	
Spud Date:	11/10/1959
Completion Date:	1/26/1960
Last Workover Date:	4/10/1998



**Surface Casing:** (11/10/1959)  
Drilled a 15" surface hole to 303'. Set 8 jts 10-3/4", 32.75#, H-40 casing at 267'.  
Cmt w/ 275 sxs reg cmt. Circ to surface.

**Intermediate Casing:** (11/21/1959)  
Drilled a 9-5/8" intermediate hole to 2356'. Set 80 jts 7-5/8", 26.4#, J-55 csg at 2353'.  
Cmt w/ 150 sxs reg cmt w/ 2% gel. TOC at 1525' (calc) (Assuming 1.58 yld, 75% effcy)  
**\*\*04/1998** - Set RBP at 2200'. Perf 2, sqz holes at 400'. Sqz w/ 120 sxs Class G cmt  
circ to surface. Clean out to 2200'. Test casing to 500#  
for 30 min, held. Recover RBP.

**Production Liner:** (12/24/1959)  
Drilled a 6-3/4" production hole to 6985'. Set 200 jts 5-1/2", 15.5#, J-55 csg at 6983'.  
Stage collar at 4929'. 1st stage cmt w/ 61 sxs 50/50 poz. 25#/100 gilsonite w/ 4%.  
Tailed w/ 30 sxs neat cmt. Temp survey, cmt top at 5340'. 2nd stage through Baker  
collar w/ 102 sxs 50-50 poz 25#/100 gilsonite w/ 4%. Tailed w/ 100 sxs reg cmt. Ran  
temp survey, cmt top at 2740'. Cut off csg at 2150', making TOL at 2150'. Sqz TOL with  
50 sx reg cmt.

Tubing:	Length (ft)
KB	10
(158) 2-3/8" 4.7# J-55 EUE 8rd	4732
(1) 1.78" SN at 4744'	1
(1) 2-3/8" 4.7# J-55 EUE 8rd	32
(1) Sawtooth collar	0.4
Set at:	4776 ft

**Artificial Lift:**  
Plunger

**Perforations:** (01/06/1960)  
**MV: 4516'-4782'**. 2 SPF. 4516'-4638', 4652'-4664', 4712'-4736', 4766'-4782'.  
Frac w/ 60,000# 20/40sand in 40,000 gal water and 100 rubber balls.  
**Upper DK: 6727'-6895'**. 4 SPF. 6727'-6774', 6790'-6848', 6866'-6875', 6885'-6895'.  
**Acidized w/ 1000 gal mud acid. Frac w/ 32,000# 20/40 sand in 40,440 gal water.**  
**Lower DK: 6905'-6960'**. 4 SPF. Acidized w/ 500 gal mud acid. Frac w/ 13,500#  
20/40 sand in 35,000 gal water. Screened out during lower DK completion.

Formations:			
Pictured Cliffs	2103'	Gallup	5890'
Cliff House	3810'	Mancos	6665'
Point Lookout	4500'	Dakota	6725'

**Additional Notes:**  
**1/1960** - Initial completions - Set Mg bridge plug at 4900'. Cut 5-1/2" csg off at 2150'.  
Sqz TOL w/ 50 sxs reg cmt. Screened out during lower DK completion. Dual  
completion w/ packer set at 6465'. DK EOT at 6738', MV EOT at 4517'.  
**04/1998** - Plug DK zone. TOH and laydown tbg string. Set CIBP at 6400'.  
Cap plug w/ 70 sxs Class B cmt 6400' - 5800'. TIH w/ packer. Isolate casing leak at  
399'. Set RBP at 2200'. Perf 2, sqz holes at 400'. Sqz cmt w/ 120 sxs Class G cmt and  
circ to surface. Clean out to 2200'. Test casing to 500# for 30 min, held. Recover RBP.  
Ran 159 jts 2-3/8", EOT at 4776, SN 4744'. Well single MV.

**\*\*Cannot find deviation survey, MD & TVD are both listed as 6985' on NMOCD,  
so it is assumed that the well is vertical.**

Sante Fe Main Office  
Phone: (505) 476-3441

General Information  
Phone: (505) 629-6116

Online Phone Directory  
<https://www.emnrd.nm.gov/ocd/contact-us>

State of New Mexico  
Energy, Minerals and Natural Resources  
Oil Conservation Division  
1220 S. St Francis Dr.  
Santa Fe, NM 87505

CONDITIONS

Action 412190

CONDITIONS

Operator: LOGOS OPERATING, LLC 2010 Afton Place Farmington, NM 87401	OGRID: 289408
	Action Number: 412190
	Action Type: [UF-WBS] Wellbore Schematic (WELLBORE SCHEMATICS)

CONDITIONS

Created By	Condition	Condition Date
mkuehling	Picks on tops not included in schematic - nacimiento behind surface casing - ojo 195 - kirtland 550 fruitland 1595 - any cement performed on well cannot go more than 100 feet above kirtland and no cement into surface casing	12/17/2024