

Form 3160-5
(June 2015)UNITED STATES
DEPARTMENT OF THE INTERIOR
BUREAU OF LAND MANAGEMENTFORM APPROVED
OMB No. 1004-0137
Expires: January 31, 2018**SUNDRY NOTICES AND REPORTS ON WELLS**
Do not use this form for proposals to drill or to re-enter an
abandoned well. Use Form 3160-3 (APD) for such proposals.

SUBMIT IN TRIPLICATE - Other instructions on page 2		5. Lease Serial No. NMNM-0164650
1. Type of Well <input checked="" type="checkbox"/> Oil Well <input type="checkbox"/> Gas Well <input type="checkbox"/> Other		6. If Indian, Allottee or Tribe Name
2. Name of Operator RIDGEWAY ARIZONA OIL CORP.		7. If Unit of CA/Agreement, Name and/or No.
3a. Address 575 N. Dary Ashford, Suite 210, Houston, TX 77079		8. Well Name and No. JENNIFER CHAVEROO SA #002
3b. Phone No. (include area code) (505) 327-6908		9. API Well No. 30-041-10613
4. Location of Well (Footage, Sec., T., R., M., or Survey Description) B-19-07S-34E 660 FNL 2310 FEL		10. Field and Pool or Exploratory Area CHAVEROO;SAN ANDRES
		11. Country or Parish, State Roosevelt

12. CHECK THE APPROPRIATE BOX(ES) TO INDICATE NATURE OF NOTICE, REPORT OR OTHER DATA

TYPE OF SUBMISSION	TYPE OF ACTION			
<input type="checkbox"/> Notice of Intent	<input type="checkbox"/> Acidize	<input type="checkbox"/> Deepen	<input type="checkbox"/> Production (Start/Resume)	<input type="checkbox"/> Water Shut-Off
<input checked="" type="checkbox"/> Subsequent Report	<input type="checkbox"/> Alter Casing	<input type="checkbox"/> Hydraulic Fracturing	<input type="checkbox"/> Reclamation	<input type="checkbox"/> Well Integrity
<input type="checkbox"/> Final Abandonment Notice	<input type="checkbox"/> Casing Repair	<input type="checkbox"/> New Construction	<input type="checkbox"/> Recomplete	<input type="checkbox"/> Other
	<input type="checkbox"/> Change Plans	<input checked="" type="checkbox"/> Plug and Abandon	<input type="checkbox"/> Temporarily Abandon	
	<input type="checkbox"/> Convert to Injection	<input type="checkbox"/> Plug Back	<input type="checkbox"/> Water Disposal	

13. Describe Proposed or Completed Operation: Clearly state all pertinent details, including estimated starting date of any proposed work and approximate duration thereof. If the proposal is to deepen directionally or recomplete horizontally, give subsurface locations and measured and true vertical depths of all pertinent markers and zones. Attach the Bond under which the work will be performed or provide the Bond No. on file with BLM/BIA. Required subsequent reports must be filed within 30 days following completion of the involved operations. If the operation results in a multiple completion or recompletion in a new interval, a Form 3160-4 must be filed once testing has been completed. Final Abandonment Notices must be filed only after all requirements, including reclamation, have been completed and the operator has determined that the site is ready for final inspection.)

Please see attached subsequent report.

14. I hereby certify that the foregoing is true and correct. Name (Printed/Typed)	Title
Signature	Date

THE SPACE FOR FEDERAL OR STATE OFFICE USE

Approved by JENNIFER SANCHEZ Digitally signed by JENNIFER SANCHEZ Date: 2024.12.16 20:38:54 -07'00'	Petroleum Engineer	Date 12/16/2024
Conditions of approval, if any, are attached. Approval of this notice does not warrant or certify that the applicant holds legal or equitable title to those rights in the subject lease which would entitle the applicant to conduct operations thereon.	Office RFO	

Title 18 U.S.C Section 1001 and Title 43 U.S.C Section 1212, make it a crime for any person knowingly and willfully to make to any department or agency of the United States any false, fictitious or fraudulent statements or representations as to any matter within its jurisdiction.

(Instructions on page 2)

GENERAL INSTRUCTIONS

This form is designed for submitting proposals to perform certain well operations and reports of such operations when completed as indicated on Federal and Indian lands pursuant to applicable Federal law and regulations. Any necessary special instructions concerning the use of this form and the number of copies to be submitted, particularly with regard to local area or regional procedures and practices, are either shown below, will be issued by or may be obtained from the local Federal office.

SPECIFIC INSTRUCTIONS

Item 4 - Locations on Federal or Indian land should be described in accordance with Federal requirements. Consult the local Federal office for specific instructions.

Item 13: Proposals to abandon a well and subsequent reports of abandonment should include such special information as is required by the local Federal office. In addition, such proposals and reports should include reasons for the abandonment; data on any former or present productive zones or other zones with present significant fluid contents not sealed off by cement or otherwise; depths (top and bottom) and method of placement of cement plugs; mud or other material placed below, between and above plugs; amount, size, method of parting of any casing, liner or tubing pulled and the depth to the top of any tubing left in the hole; method of closing top of well and date well site conditioned for final inspection looking for approval of the abandonment. If the proposal will involve **hydraulic fracturing operations**, you must comply with 43 CFR 3162.3-3, including providing information about the protection of usable water. Operators should provide the best available information about all formations containing water and their depths. This information could include data and interpretation of resistivity logs run on nearby wells. Information may also be obtained from state or tribal regulatory agencies and from local BLM offices.

NOTICES

The privacy Act of 1974 and the regulation in 43 CFR 2.48(d) provide that you be furnished the following information in connection with information required by this application.

AUTHORITY: 30 U.S.C. 181 et seq., 351 et seq., 25 U.S.C. 396; 43 CFR 3160.

PRINCIPAL PURPOSE: The information is used to: (1) Evaluate, when appropriate, approve applications, and report completion of subsequent well operations, on a Federal or Indian lease; and (2) document for administrative use, information for the management, disposal and use of National Resource lands and resources, such as: (a) evaluating the equipment and procedures to be used during a proposed subsequent well operation and reviewing the completed well operations for compliance with the approved plan; (b) requesting and granting approval to perform those actions covered by 43 CFR 3162.3-2, 3162.3-3, and 3162.3-4; (c) reporting the beginning or resumption of production, as required by 43 CFR 3162.4-1(c) and (d) analyzing future applications to drill or modify operations in light of data obtained and methods used.

ROUTINE USES: Information from the record and/or the record will be transferred to appropriate Federal, State, local or foreign agencies, when relevant to civil, criminal or regulatory investigations or prosecutions in connection with congressional inquiries or to consumer reporting agencies to facilitate collection of debts owed the Government.

EFFECT OF NOT PROVIDING THE INFORMATION: Filing of this notice and report and disclosure of the information is mandatory for those subsequent well operations specified in 43 CFR 3162.3-2, 3162.3-3, 3162.3-4.

The Paperwork Reduction Act of 1995 requires us to inform you that:

The BLM collects this information to evaluate proposed and/or completed subsequent well operations on Federal or Indian oil and gas leases.

Response to this request is mandatory.

The BLM would like you to know that you do not have to respond to this or any other Federal agency-sponsored information collection unless it displays a currently valid OMB control number.

BURDEN HOURS STATEMENT: Public reporting burden for this form is estimated to average 8 hours per response, including the time for reviewing instructions, gathering and maintaining data, and completing and reviewing the form. Direct comments regarding the burden estimate or any other aspect of this form to U.S. Department of the Interior, Bureau of Land Management (1004-0137), Bureau Information Collection Clearance Officer (WO-630), 1849 C St., N.W., Mail Stop 401 LS, Washington, D.C. 20240

RIDGEWAY ARIZONA OIL CORP.

Plug And Abandonment End Of Well Report

JENNIFER CHAVEROO SA UNIT #002

660' FNL & 2310' FEL, Section 19, 07S, 34E

Roosevelt County, NM / API 30-041-10613

Work Summary:

- 11/20/24** Made BLM and NMOCD P&A operations notifications at 9:00 AM MST.
- 11/21/24** Arrived on location. Held safety meeting. Completed spiral gas check. Checked well pressures (all 0 psi). R/U unit and equipment. P/U 1 joint of work string. Make up a spear. Successfully pulled 1 joint of tubing and tubing hanger. NU BOP. R/U floor and equipment. Shut in and secured well.
- 11/22/24** Arrived on location. Held safety meeting. Completed spiral gas check. Checked well pressures (all 0 psi). P/U 1 joint of 2-3/8" work string. Make up 2-3/8" spear. Unable to pull tubing with spear due to bad tubing. Screw 1 joint into tubing hanger. Worked stuck tubing hanger. Successfully pulled 1 joint of tubing and tubing hanger. NU BOP. Function tested BOP. R/U floor and equipment. L/D 166, 3/4" rods. L/D 130 joints of 2-3/8" tubing. Shut in and secured well.
- 11/23/24** Arrived on location. Held safety meeting. Completed spiral gas check. Checked well pressures (all 0 psi). Make up 4.5" casing scraper. Round tripped to 4080'. L/D scraper. P/U 4.5" CR. TIH and set CR at 4036'. Successfully pressure tested tubing to 1000 psi. Stung out of CR. Established circulation with 18 bbls of fresh water, pumped 62 total. Attempted to pressure test casing, test failed. TOOH. R/U wireline services. RIH and logged well. R/D wireline services. Shut in and secured well for the day.
- 11/24/24** Arrived on location. Held safety meeting. Completed spiral gas check. Checked well pressures (all 0 psi). TIH to 4036'. R/U cementing services. Pumped 2 bbls of fresh water. Pumped plug #1 from 4036' to 3717' at 8:30 AM. L/D 10 joints and TOOH. WOC 4 hours. TIH and

tagged plug #1 at 3772'. R/U cementing services. Continued pumping plug #1 from 3772' to 3616'. L/D 6 joints. Reverse circulated at 3579' with 20 bbls of fresh water. TOOH. WOC overnight. Shut in and secured well.

- 11/25/24** Arrived on location. Held safety meeting. Completed spiral gas check. Checked well pressures (all 0 psi). TIH and tagged plug #1 at 3579'. R/U cementing services. Pumped 9.0 ppg mud spacer from 3579' to 3495'. R/U cementing services. Pumped plug #2 from 3495' to 2800' at 8:30 AM. L/D 22 joints and TOOH with 32 joints. WOC. TIH and tagged plug #2 at 2768'. R/U cementing services. Pumped 9.0 ppg mud spacer from 2768' to 2553'. L/D 6 joints. R/U cementing services. Pumped plug #3 from 2553' to 2070' at 3:30 PM. L/D 16 joints. Reverse circulated with 14 bbls at 2056'. TOOH with 32 joints. WOC overnight. Shut in and secured well. Work on roads with backhoe.
- 11/26/24** Arrived on location. Held safety meeting. Completed spiral gas check. Checked well pressures (all 0 psi). TIH and tagged plug #3 at 2300'. R/U cementing services. Established circulation with 2 bbls of fresh water. Continued pumping plug #3 from 2300' to 2070' at 8:00 AM. L/D 7 joints. Reverse circulated with 12 bbls of fresh water at 2056'. L/D 65 joints. R/D and removed SRL from rig. Shut in and secured well. Shutting down for the Thanksgiving holiday.
- 12/2/24** Travel from Farmington. DES loaded cement and water. Staged equipment for work on 12-3-24.
- 12/3/24** Arrived on location. Held safety meeting. Completed spiral gas check. Checked well pressures (all 0 psi). R/U unit. TIH with 65 joints. Tagged plug #3 at 2058'. TOOH. R/U cementing services. Successfully pressure tested casing to 800 psi for 30 minutes. R/U wireline services. RIH and perforated at 1960'. POOH. R/D wireline services. R/U cementing services. Attempted to establish an injection rate but was unsuccessful (2.3 bpm at 700 psi). R/D cementing services. TIH with 65 joints. R/U cementing services. Continued pumping plug #3 from 2058' to 1739' at 2:30 PM. L/D 10 joints (slow). TOOH. WOC overnight. Shut in and secured well.
- 12/4/24** Arrived on location. Held safety meeting. Completed spiral gas check. Checked well pressures (all 0 psi). TIH and tagged plug #3 at 1881'. R/U cementing services. Continued pumping plug #3 from 1881' to 1770'. R/D cementers. L/D 5 joints and TOOH. WOC 4 hours. TIH and tagged plug #3 at 1775'. R/U cementing services. Pumped 9.0 ppg mud spacer from 1775' to 510' at 1:00 PM. TOOH. R/U wireline services. RIH and perforated at 510'. POOH. R/D wireline services. R/U cementing services. Established circulation

down 4.5" casing, into perforations at 510', and out BH. Pumped plug #4 down 4.5" casing, into perforations at 510', and out BH at surface. 136 sx in annulus 40 sx in 4.5" casing. R/D cementers. R/D floor and equipment. N/D BOP. WOC overnight.

12/5/24 Arrived on location. Held safety meeting. Completed spiral gas check. Checked well pressures (all 0 psi). Dug cellar 3' down with backhoe. R/U welder on location. Performed WH cut off. 8-5/8" casing was to surface, tagged 6' down in production casing. Topped off with 8 sx. Installed P&A marker per all local regulations. Backfilled cellar. Prepare to MOL. Used backhoe to maintain roads.

Plug Summary:

Plug #1 Stage 1: Perforations, 4,063'-3,772', 25 Sacks Type I/II Cement

P/U 4.5" CR. TIH and set CR at 4036'. TOOH. Logged well. TIH. TIH to 4036'. R/U cementing services. Pumped 2 bbls of fresh water. Pumped plug #1 from 4036' to 3717' at 8:30 AM. L/D 10 joints and TOOH. WOC 4 hours. TIH and tagged plug #1 at 3772'.

Plug #1 Stage 2: 3,772'-3,579', 12 Sacks Type I/II Cement

R/U cementing services. Continued pumping plug #1 from 3772' to 3616'. L/D 6 joints. Reverse circulated at 3579' with 20 bbls of fresh water. TOOH. WOC overnight. TIH and tagged plug #1 at 3579'.

Plug #2: San Andres and Queen Formation Tops, 3,495'-2,768', 54 Sacks Type I/II Cement

R/U cementing services. Pumped plug #2 from 3495' to 2800'. L/D 22 joints and TOOH with 32 joints. WOC. TIH and tagged plug #2 at 2768'.

Plug #3 Stage 1: 2,553'-2,300', 38 Sacks Type I/II Cement

R/U cementing services. Pumped plug #3 from 2553' to 2070'. L/D 16 joints. Reverse circulated with 14 bbls at 2056'. TOOH with 32 joints. WOC overnight. TIH and tagged plug #3 at 2300'.

Plug #3 Stage 2: Yates and Base Salt Formation Tops, 2,300'-2,058', 18 Sacks Type I/II Cement

R/U cementing services. Established circulation with 2 bbls of fresh water. Continued pumping plug #3 from 2300' to 2070'. L/D 7

joints. Reverse circulated with 12 bbls of fresh water at 2056'. L/D 65 joints. WOC. TIH with 65 joints. Tagged plug #3 at 2058'.

Plug #3 Stage 3: 2,058' - 1,881', 25 Sacks Type I/II Cement

R/U wireline services. RIH and perforated at 1960'. POOH. R/D wireline services. R/U cementing services. Attempted to establish an injection rate but was unsuccessful (2.3 bmp at 700 psi). R/D cementing services. TIH with 65 joints. R/U cementing services. Continued pumping plug #3 from 2058' to 1739'. L/D 10 joints (slow). TOOH. WOC overnight. TIH and tagged plug #3 at 1881'.

Plug #3 Stage 4: Rustler Formation Top, 1,881' - 1,775', 9 Sacks Type I/II Cement

R/U cementing services. Continued pumping plug #3 from 1881' to 1770'. R/D cementers. L/D 5 joints and TOOH. WOC 4 hours. TIH and tagged plug #3 at 1775'.

Plug #4: Surface Casing Shoe, 510'-Surface, 184 Sacks Type I/II Cement (Inside/Outside) (8 sx Top Off)

R/U wireline services. RIH and perforated at 510'. POOH. R/D wireline services. R/U cementing services. Established circulation down 4.5" casing, into perforations at 510', and out BH. Pumped plug #4 down 4.5" casing, into perforations at 510', and out BH at surface. 136 sx in annulus 40 sx in 4.5" casing. WOC overnight. Dug cellar 3' down with backhoe. R/U welder on location. Performed WH cut off. 8-5/8" casing was to surface, tagged 6' down in production casing. Topped off with 8 sx. Installed P&A marker per all local regulations. Backfilled cellar.

Proposed Wellbore Diagram

RIDGEWAY ARIZONA OIL CORP.
Jennifer Chaveroo SA UNIT #002
API: 30-041-10613
Roosevelt County, New Mexico
LPCH: YES

Surface Casing

8.625" 24# @ 460 ft
OH: 12.25'
Cemented W/ 300 sx

Plug 4

510 feet - Surface
510 foot plug
184 Sacks of Type I/II Cement

Plug 3

2553 feet - 1775 feet
778 foot plug
90 Sacks of Type I/II Cement

Plug 2

3495 feet - 2768 feet
727 foot plug
54 Sacks of Type I/II Cement

Plug 1

4036 feet - 3579 feet
457 foot plug
37 sacks of Type I/II Cement

Estimated Formations

Rustler - 1870 feet
Base Salt - 2115 feet
Yates - 2203 feet
Queen - 2900 feet
San Andres - 3361 feet

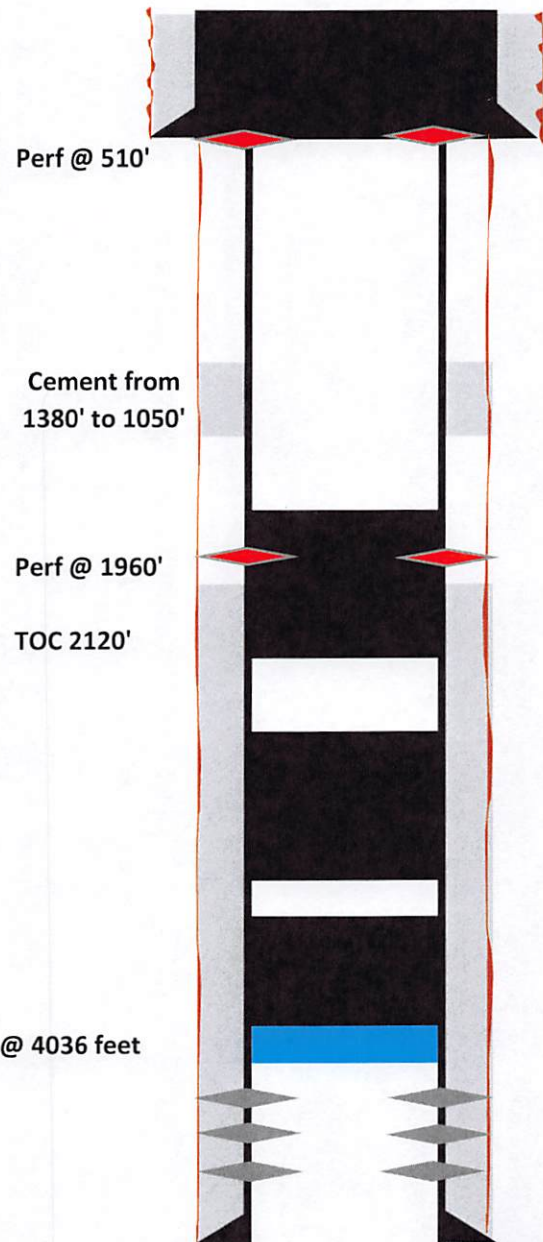
Type I/II Cement
15.6 PPG
1.18 cf/sx

Perforations

4083 feet - 4271 feet

Production Casing

4.5" 9.5# @ 4345 feet
OH: 7.875"
Cemented W/ 800 sx
0.0912 cf/ft



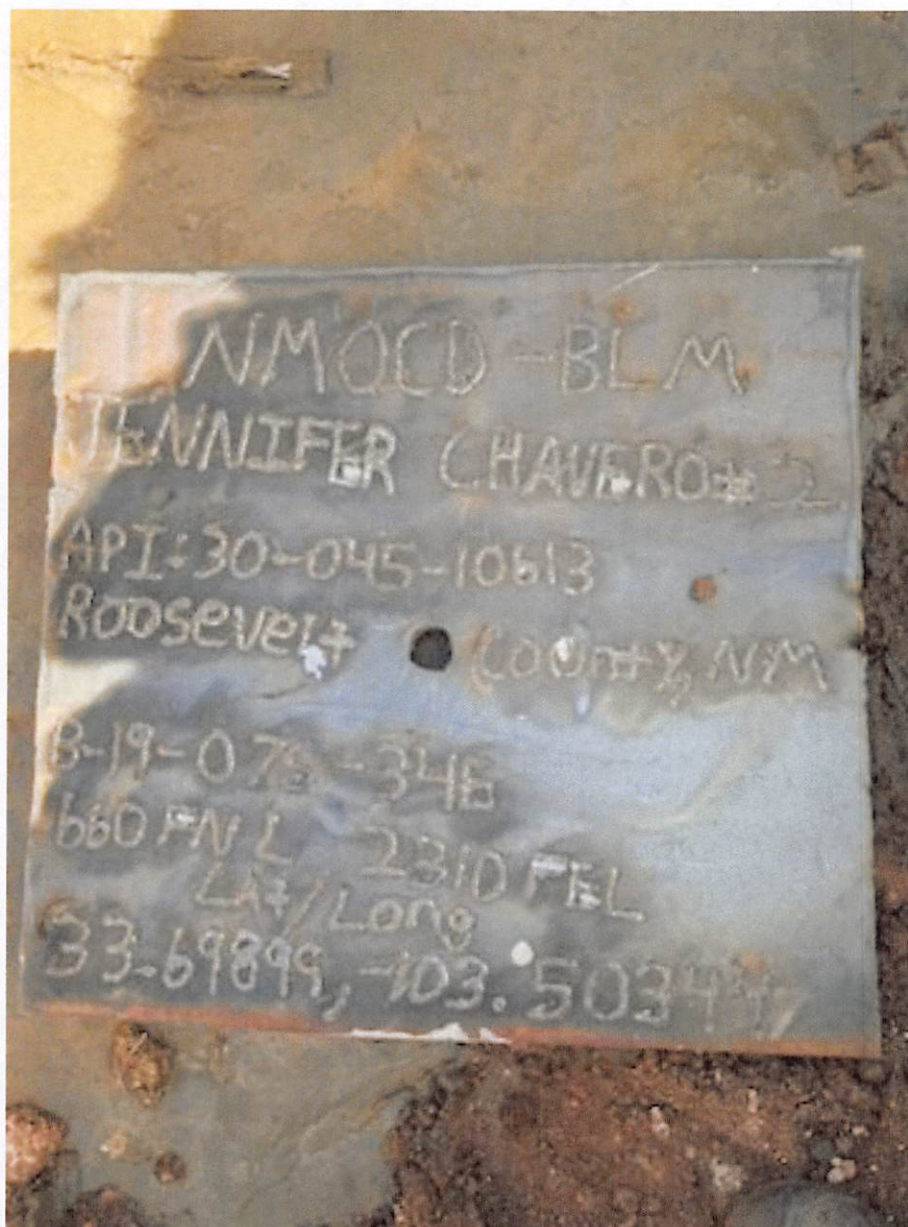


Figure 1: Marker



Figure 2: Top Off

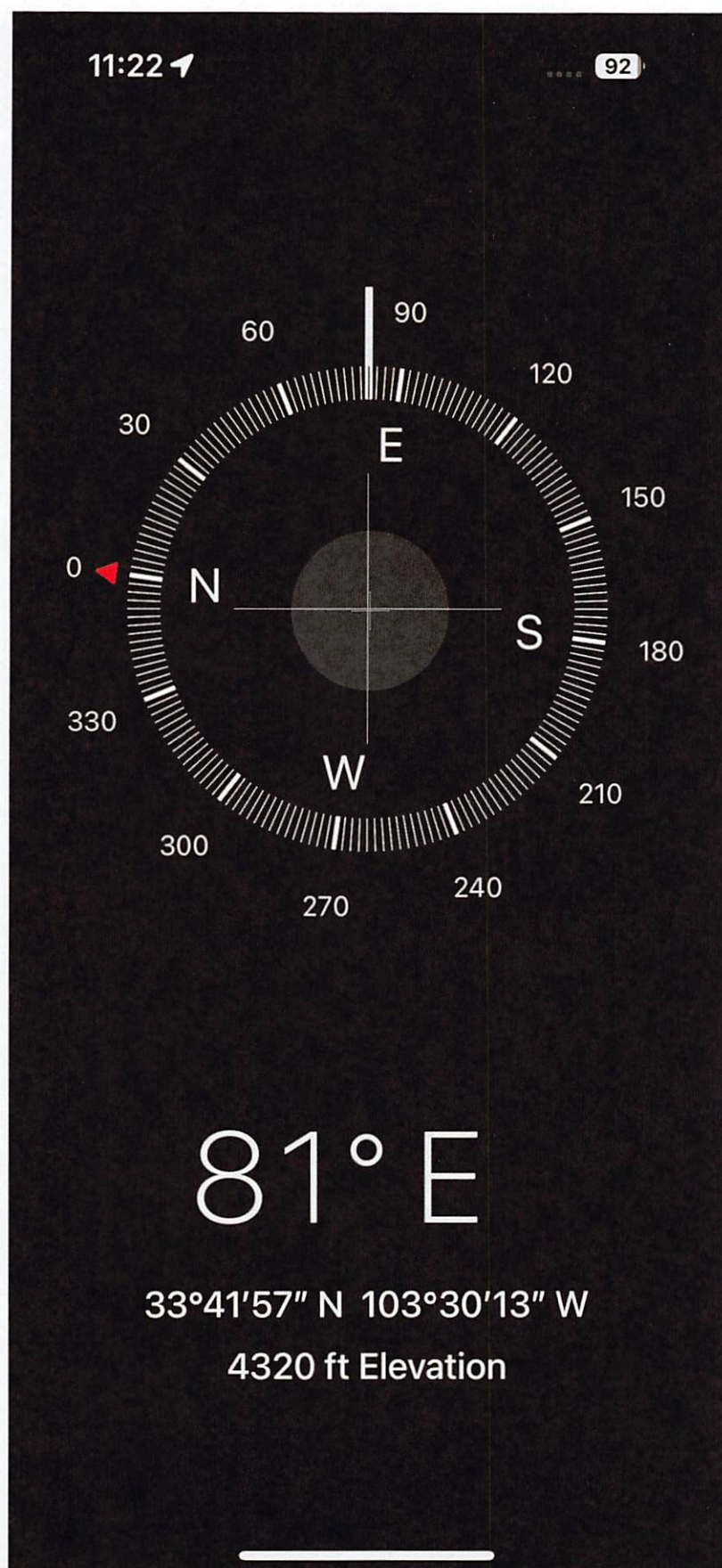


Figure 3: GPS

Sante Fe Main Office
Phone: (505) 476-3441

General Information
Phone: (505) 629-6116

Online Phone Directory
<https://www.emnrd.nm.gov/ocd/contact-us>

State of New Mexico
Energy, Minerals and Natural Resources
Oil Conservation Division
1220 S. St Francis Dr.
Santa Fe, NM 87505

CONDITIONS

Action 412721

CONDITIONS

Operator: J.A. Drake Well Service Inc. 607 W Pinon Farmington, NM 87401	OGRID: 330485
	Action Number: 412721
	Action Type: [C-103] Sub. Plugging (C-103P)

CONDITIONS

Created By	Condition	Condition Date
loren.diede	None	12/19/2024