

<b>Well Name:</b> POKER LAKE UNIT 13-1 PC	<b>Well Location:</b> T24S / R29E / SEC 13 / SWNE / 32.218281 / -103.935096	<b>County or Parish/State:</b> EDDY / NM
<b>Well Number:</b> 165H	<b>Type of Well:</b> CONVENTIONAL GAS WELL	<b>Allottee or Tribe Name:</b>
<b>Lease Number:</b> NMNM05912	<b>Unit or CA Name:</b> POKER LAKE UNIT	<b>Unit or CA Number:</b> NMNM71016X
<b>US Well Number:</b> 3001554013	<b>Operator:</b> XTO PERMIAN OPERATING LLC	

Notice of Intent

**Sundry ID:** 2823867

**Type of Submission:** Notice of Intent

**Date Sundry Submitted:** 11/21/2024

**Date proposed operation will begin:** 11/21/2024

**Type of Action:** APD Change

**Time Sundry Submitted:** 12:43

**Procedure Description:** XTO respectfully requests to make the following changes: Dedicated acreage to: 640.00 ac  
Updated spacing unit on the new form No new surface disturbance

NOI Attachments

**Procedure Description**

2023060326\_XTO\_POKER\_LAKE\_UNIT\_13\_1\_PC\_165H\_C\_102\_FINAL\_Signed\_7\_28\_23\_\_\_AMENDED\_N  
EW\_FORM\_9\_7\_2024\_11\_09\_2024\_\_08\_40\_20241121124252.pdf

Received by OCD: 12/11/2024 1:21:24 PM

Page 2 of 8

Well Name: POKER LAKE UNIT 13-1 PC	Well Location: T24S / R29E / SEC 13 / SWNE / 32.218281 / -103.935096	County or Parish/State: EDDY / NM
Well Number: 165H	Type of Well: CONVENTIONAL GAS WELL	Allottee or Tribe Name:
Lease Number: NMNM05912	Unit or CA Name: POKER LAKE UNIT	Unit or CA Number: NMNM71016X
US Well Number: 3001554013	Operator: XTO PERMIAN OPERATING LLC	

Operator

I certify that the foregoing is true and correct. Title 18 U.S.C. Section 1001 and Title 43 U.S.C. Section 1212, make it a crime for any person knowingly and willfully to make to any department or agency of the United States any false, fictitious or fraudulent statements or representations as to any matter within its jurisdiction. Electronic submission of Sundry Notices through this system satisfies regulations requiring a

Operator Electronic Signature: MANOJ VENKATESH

Signed on: NOV 26, 2024 09:49 AM

Name: XTO PERMIAN OPERATING LLC

Title: Regulatory Analyst

Street Address: 22777 SPRINGWOODS VILLAGE PARKWAY

City: SPRINGState: TX

Phone: (720) 539-1673

Email address: MANOJ.VENKATESH@EXXONMOBIL.COM

Field

Representative Name:

Street Address:

City:State:Zip:

Phone:

Email address:

BLM Point of Contact

BLM POC Name: CHRISTOPHER WALLS

BLM POC Title: Petroleum Engineer

BLM POC Phone: 5752342234

BLM POC Email Address: cwalls@blm.gov

Disposition: Accepted

Disposition Date: 12/04/2024

Signature: Chris Walls

Form 3160-5 (June 2019)	UNITED STATES DEPARTMENT OF THE INTERIOR BUREAU OF LAND MANAGEMENT	FORM APPROVED OMB No. 1004-0137 Expires: October 31, 2021
<b>SUNDRY NOTICES AND REPORTS ON WELLS</b> <i>Do not use this form for proposals to drill or to re-enter an abandoned well. Use Form 3160-3 (APD) for such proposals.</i>		5. Lease Serial No.
		6. If Indian, Allottee or Tribe Name
		7. If Unit of CA/Agreement, Name and/or No.

<b>SUBMIT IN TRIPLICATE - Other instructions on page 2</b>		8. Well Name and No.
1. Type of Well <input type="checkbox"/> Oil Well <input type="checkbox"/> Gas Well <input type="checkbox"/> Other		9. API Well No.
2. Name of Operator	3a. Address	10. Field and Pool or Exploratory Area
3b. Phone No. (include area code)		11. Country or Parish, State
4. Location of Well (Footage, Sec., T.,R.,M., or Survey Description)		

12. CHECK THE APPROPRIATE BOX(ES) TO INDICATE NATURE OF NOTICE, REPORT OR OTHER DATA				
TYPE OF SUBMISSION	TYPE OF ACTION			
<input type="checkbox"/> Notice of Intent	<input type="checkbox"/> Acidize	<input type="checkbox"/> Deepen	<input type="checkbox"/> Production (Start/Resume)	<input type="checkbox"/> Water Shut-Off
<input type="checkbox"/> Subsequent Report	<input type="checkbox"/> Alter Casing	<input type="checkbox"/> Hydraulic Fracturing	<input type="checkbox"/> Reclamation	<input type="checkbox"/> Well Integrity
<input type="checkbox"/> Final Abandonment Notice	<input type="checkbox"/> Casing Repair	<input type="checkbox"/> New Construction	<input type="checkbox"/> Recomplete	<input type="checkbox"/> Other
	<input type="checkbox"/> Change Plans	<input type="checkbox"/> Plug and Abandon	<input type="checkbox"/> Temporarily Abandon	
	<input type="checkbox"/> Convert to Injection	<input type="checkbox"/> Plug Back	<input type="checkbox"/> Water Disposal	

13. Describe Proposed or Completed Operation: Clearly state all pertinent details, including estimated starting date of any proposed work and approximate duration thereof. If the proposal is to deepen directionally or recompleate horizontally, give subsurface locations and measured and true vertical depths of all pertinent markers and zones. Attach the Bond under which the work will be perfonned or provide the Bond No. on file with BLM/BIA. Required subsequent reports must be filed within 30 days following completion of the involved operations. If the operation results in a multiple completion or recompletion in a new interval, a Form 3160-4 must be filed once testing has been completed. Final Abandonment Notices must be filed only after all requirements, including reclamation, have been completed and the operator has detennined that the site is ready for final inspection.)

14. I hereby certify that the foregoing is true and correct. Name (Printed/Typed)	Title	
Signature	Date	

<b>THE SPACE FOR FEDERAL OR STATE OFFICE USE</b>		
Approved by	Title	Date
Conditions of approval, if any, are attached. Approval of this notice does not warrant or certify that the applicant holds legal or equitable title to those rights in the subject lease which would entitle the applicant to conduct operations thereon.	Office	

Title 18 U.S.C Section 1001 and Title 43 U.S.C Section 1212, make it a crime for any person knowingly and willfully to make to any department or agency of the United States any false, fictitious or fraudulent statements or representations as to any matter within its jurisdiction.

(Instructions on page 2)

## GENERAL INSTRUCTIONS

This form is designed for submitting proposals to perform certain well operations and reports of such operations when completed as indicated on Federal and Indian lands pursuant to applicable Federal law and regulations. Any necessary special instructions concerning the use of this form and the number of copies to be submitted, particularly with regard to local area or regional procedures and practices, are either shown below, will be issued by or may be obtained from the local Federal office.

## SPECIFIC INSTRUCTIONS

*Item 4* - Locations on Federal or Indian land should be described in accordance with Federal requirements. Consult the local Federal office for specific instructions.

*Item 13*: Proposals to abandon a well and subsequent reports of abandonment should include such special information as is required by the local Federal office. In addition, such proposals and reports should include reasons for the abandonment; data on any former or present productive zones or other zones with present significant fluid contents not sealed off by cement or otherwise; depths (top and bottom) and method of placement of cement plugs; mud or other material placed below, between and above plugs; amount, size, method of parting of any casing, liner or tubing pulled and the depth to the top of any tubing left in the hole; method of closing top of well and date well site conditioned for final inspection looking for approval of the abandonment. If the proposal will involve **hydraulic fracturing operations**, you must comply with 43 CFR 3162.3-3, including providing information about the protection of usable water. Operators should provide the best available information about all formations containing water and their depths. This information could include data and interpretation of resistivity logs run on nearby wells. Information may also be obtained from state or tribal regulatory agencies and from local BLM offices.

## NOTICES

The privacy Act of 1974 and the regulation in 43 CFR 2.48(d) provide that you be furnished the following information in connection with information required by this application.

AUTHORITY: 30 U.S.C. 181 et seq., 351 et seq., 25 U.S.C. 396; 43 CFR 3160.

PRINCIPAL PURPOSE: The information is used to: (1) Evaluate, when appropriate, approve applications, and report completion of subsequent well operations, on a Federal or Indian lease; and (2) document for administrative use, information for the management, disposal and use of National Resource lands and resources, such as: (a) evaluating the equipment and procedures to be used during a proposed subsequent well operation and reviewing the completed well operations for compliance with the approved plan; (b) requesting and granting approval to perform those actions covered by 43 CFR 3162.3-2, 3162.3-3, and 3162.3-4; (c) reporting the beginning or resumption of production, as required by 43 CFR 3162.4-1(c) and (d) analyzing future applications to drill or modify operations in light of data obtained and methods used.

ROUTINE USES: Information from the record and/or the record will be transferred to appropriate Federal, State, local or foreign agencies, when relevant to civil, criminal or regulatory investigations or prosecutions in connection with congressional inquiries or to consumer reporting agencies to facilitate collection of debts owed the Government.

EFFECT OF NOT PROVIDING THE INFORMATION: Filing of this notice and report and disclosure of the information is mandatory for those subsequent well operations specified in 43 CFR 3162.3-2, 3162.3-3, 3162.3-4.

The Paperwork Reduction Act of 1995 requires us to inform you that:

The BLM collects this information to evaluate proposed and/or completed subsequent well operations on Federal or Indian oil and gas leases.

Response to this request is mandatory.

The BLM would like you to know that you do not have to respond to this or any other Federal agency-sponsored information collection unless it displays a currently valid OMB control number.

**BURDEN HOURS STATEMENT:** Public reporting burden for this form is estimated to average 8 hours per response, including the time for reviewing instructions, gathering and maintaining data, and completing and reviewing the form. Direct comments regarding the burden estimate or any other aspect of this form to U.S. Department of the Interior, Bureau of Land Management (1004-0137), Bureau Information Collection Clearance Officer (WO-630), 1849 C St., N.W., Mail Stop 401 LS, Washington, D.C. 20240

## Additional Information

### Location of Well

0. SHL: SWNE / 2270 FNL / 1625 FEL / TWSP: 24S / RANGE: 29E / SECTION: 13 / LAT: 32.218281 / LONG: -103.935096 ( TVD: 0 feet, MD: 0 feet )

PPP: SWNE / 2540 FNL / 2310 FEL / TWSP: 24S / RANGE: 29E / SECTION: 13 / LAT: 32.217834 / LONG: -103.936971 ( TVD: 11251 feet, MD: 11627 feet )

BHL: TR O / 50 FSL / 2154 FEL / TWSP: 24S / RANGE: 29E / SECTION: 24 / LAT: 32.195669 / LONG: -103.93595 ( TVD: 10123 feet, MD: 21916 feet )

<div>C-102</div> <div>Submit Electronically Via OCD Permitting</div>		<div>State of New Mexico</div> <div>Energy, Minerals &amp; Natural Resources Department</div> <div>OIL CONSERVATION DIVISION</div>				<div>Revised July 9, 2024</div> <div><div>Submittal Type:</div><div><div><input type="checkbox"/> Initial Submittal</div><div><input checked="" type="checkbox"/> Amended Report</div><div><input type="checkbox"/> As Drilled</div></div></div>			
<div>WELL LOCATION INFORMATION</div>									
<div>API Number</div> <div>30-015-54013</div>		<div>Pool Code</div> <div>98220</div>		<div>Pool Name</div> <div>PURPLE SAGE; WOLFCAMP</div>					
<div>Property Code</div> <div>333843</div>		<div>Property Name</div> <div>POKER LAKE UNIT 13-1 PC</div>				<div>Well Number</div> <div>165H</div>			
<div>ORGID No.</div> <div>373075</div>		<div>Operator Name</div> <div>XTO PERMIAN OPERATING, LLC.</div>				<div>Ground Level Elevation</div> <div>3,106'</div>			
<div>Surface Owner:</div> <div><input type="checkbox"/> State <input type="checkbox"/> Fee <input type="checkbox"/> Tribal <input checked="" type="checkbox"/> Federal</div>				<div>Mineral Owner:</div> <div><input type="checkbox"/> State <input type="checkbox"/> Fee <input type="checkbox"/> Tribal <input checked="" type="checkbox"/> Federal</div>					
<div>Surface Location</div>									
<div>UL</div> <div>G</div>	<div>Section</div> <div>13</div>	<div>Township</div> <div>24 S</div>	<div>Range</div> <div>29 E</div>	<div>Lot</div>	<div>Ft. from N/S</div> <div>2,270' FNL</div>	<div>Ft. from E/W</div> <div>1,625' FEL</div>	<div>Latitude</div> <div>32.218568</div>	<div>Longitude</div> <div>-103.934754</div>	<div>County</div> <div>EDDY</div>
<div>Bottom Hole Location</div>									
<div>UL</div> <div>O</div>	<div>Section</div> <div>24</div>	<div>Township</div> <div>24 S</div>	<div>Range</div> <div>29 E</div>	<div>Lot</div>	<div>Ft. from N/S</div> <div>50' FSL</div>	<div>Ft. from E/W</div> <div>2,154' FEL</div>	<div>Latitude</div> <div>32.195794</div>	<div>Longitude</div> <div>-103.936438</div>	<div>County</div> <div>EDDY</div>
<div>Dedicated Acres</div> <div>640</div>		<div>Infill or Defining Well</div> <div>INFILL</div>		<div>Defining Well API</div> <div>3001554014</div>		<div>Overlapping Spacing Unit (Y/N)</div> <div>Y</div>		<div>Consolidation Code</div> <div>U</div>	
<div>Order Numbers.</div>				<div>Well setbacks are under Common Ownership:</div> <div><input checked="" type="checkbox"/> Yes <input type="checkbox"/> No</div>					
<div>Kick Off Point (KOP)</div>									
<div>UL</div> <div>G</div>	<div>Section</div> <div>13</div>	<div>Township</div> <div>24 S</div>	<div>Range</div> <div>29 E</div>	<div>Lot</div>	<div>Ft. from N/S</div> <div>2,270' FNL</div>	<div>Ft. from E/W</div> <div>1,625' FEL</div>	<div>Latitude</div> <div>32.218568</div>	<div>Longitude</div> <div>-103.934754</div>	<div>County</div> <div>EDDY</div>
<div>First Take Point (FTP)</div>									
<div>UL</div> <div>G</div>	<div>Section</div> <div>13</div>	<div>Township</div> <div>24 S</div>	<div>Range</div> <div>29 E</div>	<div>Lot</div>	<div>Ft. from N/S</div> <div>2,059' FNL</div>	<div>Ft. from E/W</div> <div>2,154' FEL</div>	<div>Latitude</div> <div>32.219154</div>	<div>Longitude</div> <div>-103.936464</div>	<div>County</div> <div>EDDY</div>
<div>Last Take Point (LTP)</div>									
<div>UL</div> <div>O</div>	<div>Section</div> <div>24</div>	<div>Township</div> <div>24 S</div>	<div>Range</div> <div>29 E</div>	<div>Lot</div>	<div>Ft. from N/S</div> <div>100' FSL</div>	<div>Ft. from E/W</div> <div>2,154' FEL</div>	<div>Latitude</div> <div>32.195931</div>	<div>Longitude</div> <div>-103.936439</div>	<div>County</div> <div>EDDY</div>
<div>Unitized Area or Area of Uniform Interest</div> <div>NMNM105422429</div>		<div>Spacing Unit Type</div> <div><input checked="" type="checkbox"/> Horizontal <input type="checkbox"/> Vertical</div>				<div>Ground Floor Elevation:</div> <div>3,106'</div>			
<div>OPERATOR CERTIFICATIONS</div> <div><div>I hereby certify that the information contained herein is true and complete to the best of my knowledge and belief, and that this organization either owns a working interest or unleased mineral interest in the land including the proposed bottom hole location or has a right to drill this well at this location pursuant to a contract with an owner of such a mineral or working interest, or to a voluntary pooling agreement or a compulsory pooling order heretofore entered by the division.</div><div>If this well is a horizontal well, I further certify that this organization has received the consent of at least one lessee or owner of a working interest or unleased mineral interest in each tract (in the target pool or formation) in which any part of the well's completed interval will be located or obtained a compulsory pooling form the division.</div></div> <div><div>Manoj Venkatesh</div><div>09/11/24</div></div> <div><div>Signature</div><div>Date</div></div> <div><div>Manoj Venkatesh</div></div> <div><div>Printed Name</div><div>manoj.venkatesh@exxonmobil.com</div></div> <div><div>Email Address</div></div>					<div>SURVEYOR CERTIFICATIONS</div> <div><div>I hereby certify that the well location shown on this plat was plotted from field notes of actual surveys made by me or under my supervision, and that the same is true and correct to the best of my belief.</div><div>I, TIM C. PAPPAS, NEW MEXICO PROFESSIONAL SURVEYOR NO. 21209, DO HEREBY CERTIFY THAT THIS SURVEY PLAT AND THE ACTUAL SURVEY ON THE GROUND UPON WHICH IT IS BASED WERE PERFORMED BY ME OR UNDER MY DIRECT SUPERVISION; THAT I AM RESPONSIBLE FOR THIS SURVEY, THAT THIS SURVEY MEETS THE MINIMUM STANDARDS FOR SURVEYING IN NEW MEXICO, AND THAT IS TRUE AND CORRECT TO THE BEST OF MY KNOWLEDGE AND BELIEF.</div><div><div><div>9 Sept 2024</div><div>TIM C. PAPPAS REGISTERED PROFESSIONAL LAND SURVEYOR STATE OF NEW MEXICO NO. 21209</div></div><div><div>TIM C. PAPPAS NEW MEXICO 21209 PROFESSIONAL SURVEYOR</div></div></div><div><div>Signature and Seal of Professional Surveyor</div></div><div><div>Certificate Number</div><div>21209</div></div><div><div>Date of Survey</div><div>7/28/2023</div></div></div>				
<div>Note: No allowable will be assigned to this completion until all interests have been consolidated or a non-standard unit has been approved by the division.</div>									
<div><div><div><div>FSC INC</div><div>SURVEYORS+ENGINEERS</div></div><div>2821 West 7th Street., Ste 200 - Fort Worth, TX 76107 Ph: 817.349.9800 - Fax: 979.732.5271 TBPE Firm 17957   TBPLS Firm 10193887 www.fscinc.net</div><div><div>COPYRIGHT 2024 - ALL RIGHTS RESERVED</div></div></div><div><div>DATE:</div><div>9-7-2024</div><div>PROJECT NO:</div><div>2023060326</div><div>DRAWN BY:</div><div>LM</div><div>SCALE:</div><div></div><div>CHECKED BY:</div><div>CH</div><div>SHEET:</div><div>1 OF 2</div><div>FIELD CREW:</div><div>IR</div><div>REVISION:</div><div>NO</div></div></div>									

ACREAGE DEDICATION PLATS

This grid represents a standard section. You may superimpose a non-standard section, or a larger area, over this grid. Operators must outline the dedicated acreage in a red box, clearly show the well surface location and bottom hole location, if it is directionally drilled, with the dimensions from the section lines in the cardinal directions. If this is a horizontal wellbore show on this plat the location of the First Take Point and Last Take Point, and the point within the Completed interval (other than the First Take Point or Last Take Point) that is the closest to any outer boundary of the tract.

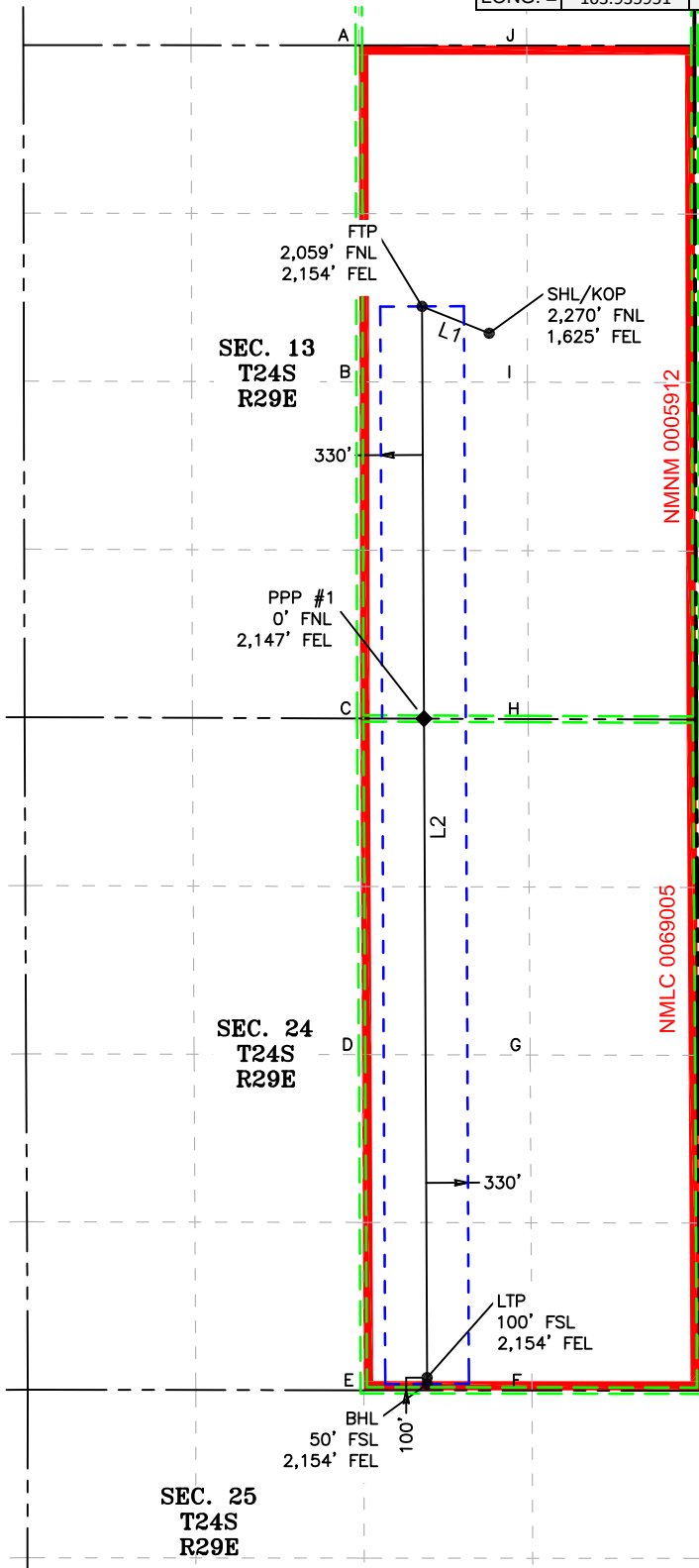
Surveyors shall use the latest United States government survey or dependent resurvey. Well locations will be in reference to the New Mexico Principal Meridian. If the land is not surveyed, contact the OCD Engineering Bureau. Independent subdivision surveys will not be acceptable.

LEGEND

SECTION LINE  
PROPOSED WELLBORE  
NEW MEXICO MINERAL  
LEASE LINE  
330' BUFFER  
DEDICATED ACREAGE

LINE TABLE		
LINE	AZIMUTH	LENGTH
L1	291°45'31"	570.12'
L2	179°44'04"	8,498.21'

COORDINATE TABLE								
SHL/KOP (NAD 83 NME)			FTP (NAD 83 NME)			PPP #1 (NAD 83 NME)		
Y =	443,477.5	N	Y =	443,688.9	N	Y =	440,437.7	N
X =	664,598.6	E	X =	664,069.1	E	X =	664,084.2	E
LAT. =	32.218568	°N	LAT. =	32.219154	°N	LAT. =	32.210217	°N
LONG. =	103.934754	°W	LONG. =	103.936464	°W	LONG. =	103.936454	°W
LTP (NAD 83 NME)			BHL (NAD 83 NME)					
Y =	435,240.8	N	Y =	435,190.8	N			
X =	664,108.2	E	X =	664,108.5	E			
LAT. =	32.195931	°N	LAT. =	32.195794	°N			
LONG. =	103.936439	°W	LONG. =	103.936438	°W			
SHL/KOP (NAD 27 NME)			FTP (NAD 27 NME)			PPP #1 (NAD 27 NME)		
Y =	443,418.2	N	Y =	443,629.5	N	Y =	440,378.4	N
X =	623,415.1	E	X =	622,885.7	E	X =	622,900.6	E
LAT. =	32.218444	°N	LAT. =	32.219030	°N	LAT. =	32.210093	°N
LONG. =	103.934266	°W	LONG. =	103.935975	°W	LONG. =	103.935966	°W
LTP (NAD 27 NME)			BHL (NAD 27 NME)					
Y =	435,181.6	N	Y =	435,131.6	N			
X =	622,924.5	E	X =	622,924.8	E			
LAT. =	32.195807	°N	LAT. =	32.195669	°N			
LONG. =	103.935951	°W	LONG. =	103.935950	°W			



CORNER COORDINATES (NAD83 NME)				
A - Y =	445,748.2	N	A - X =	663,570.2 E
B - Y =	443,093.9	N	B - X =	663,576.0 E
C - Y =	440,439.6	N	C - X =	663,581.8 E
D - Y =	437,788.4	N	D - X =	663,595.7 E
E - Y =	435,141.5	N	E - X =	663,609.5 E
F - Y =	435,139.5	N	F - X =	664,936.2 E
G - Y =	437,785.4	N	G - X =	664,921.5 E
H - Y =	440,434.7	N	H - X =	664,906.3 E
I - Y =	443,091.0	N	I - X =	664,900.3 E
J - Y =	445,747.4	N	J - X =	664,894.3 E
CORNER COORDINATES (NAD27 NME)				
A - Y =	445,688.8	N	A - X =	622,386.8 E
B - Y =	443,034.6	N	B - X =	622,392.5 E
C - Y =	440,380.3	N	C - X =	622,398.2 E
D - Y =	437,729.1	N	D - X =	622,412.0 E
E - Y =	435,082.3	N	E - X =	622,425.8 E
F - Y =	435,080.4	N	F - X =	623,752.4 E
G - Y =	437,726.2	N	G - X =	623,737.8 E
H - Y =	440,375.4	N	H - X =	623,722.7 E
I - Y =	443,031.7	N	I - X =	623,716.8 E
J - Y =	445,687.9	N	J - X =	623,710.9 E

Sante Fe Main Office  
Phone: (505) 476-3441

General Information  
Phone: (505) 629-6116

Online Phone Directory  
<https://www.emnrd.nm.gov/oed/contact-us>

State of New Mexico  
Energy, Minerals and Natural Resources  
Oil Conservation Division  
1220 S. St Francis Dr.  
Santa Fe, NM 87505

CONDITIONS

Action 410770

CONDITIONS

Operator: XTO PERMIAN OPERATING LLC. 6401 HOLIDAY HILL ROAD MIDLAND, TX 79707	OGRID: 373075
	Action Number: 410770
	Action Type: [C-103] NOI Change of Plans (C-103A)

CONDITIONS

Created By	Condition	Condition Date
dmcclure	None	12/20/2024