

Well Name: KING	Well Location: T30N / R10W / SEC 22 / SESE / 36.792633 / -107.865799	County or Parish/State: SAN JUAN / NM
Well Number: 1A	Type of Well: CONVENTIONAL GAS WELL	Allottee or Tribe Name:
Lease Number: NMSF078207	Unit or CA Name:	Unit or CA Number:
US Well Number: 3004523709	Operator: HILCORP ENERGY COMPANY	

Subsequent Report

Sundry ID: 2822687

Type of Submission: Subsequent Report

Type of Action: Workover Operations

Date Sundry Submitted: 11/15/2024

Time Sundry Submitted: 08:59

Date Operation Actually Began: 11/04/2024

Actual Procedure: The Mesaverde isolation plug was drilled out after DHC approval. The well is now producing as a FRC/MV commingle per the attached reports.

SR Attachments

Actual Procedure

King_1A_Comminge_SR_20241115085859.pdf

Well Name: KING

Well Location: T30N / R10W / SEC 22 /
SESE / 36.792633 / -107.865799

County or Parish/State: SAN
JUAN / NM

Well Number: 1A

Type of Well: CONVENTIONAL GAS
WELL

Allottee or Tribe Name:

Lease Number: NMSF078207

Unit or CA Name:

Unit or CA Number:

US Well Number: 3004523709

Operator: HILCORP ENERGY
COMPANY

Operator

I certify that the foregoing is true and correct. Title 18 U.S.C. Section 1001 and Title 43 U.S.C. Section 1212, make it a crime for any person knowingly and willfully to make to any department or agency of the United States any false, fictitious or fraudulent statements or representations as to any matter within its jurisdiction. Electronic submission of Sundry Notices through this system satisfies regulations requiring a

Operator Electronic Signature: CHERYLENE WESTON

Signed on: NOV 15, 2024 08:59 AM

Name: HILCORP ENERGY COMPANY

Title: Operations/Regulatory Tech - Sr

Street Address: 1111 TRAVIS STREET

City: HOUSTON

State: TX

Phone: (713) 289-2615

Email address: CWESTON@HILCORP.COM

Field

Representative Name:

Street Address:

City:

State:

Zip:

Phone:

Email address:

BLM Point of Contact

BLM POC Name: KENNETH G RENNICK

BLM POC Title: Petroleum Engineer

BLM POC Phone: 5055647742

BLM POC Email Address: krennick@blm.gov

Disposition: Accepted

Disposition Date: 11/15/2024

Signature: Kenneth Rennick



Well Operations Summary L48

Well Name: KING #1A

API: 3004523709	Field: BLANCO MESAVERDE (PRORATED GAS	State: NEW MEXICO
Permit to Drill (PTD) #:	Sundry #:	Rig/Service: RIO 22

Jobs

Actual Start Date: 8/6/2024 End Date: 11/11/2024

Report Number 12	Report Start Date 11/4/2024	Report End Date 11/4/2024
---------------------	--------------------------------	------------------------------

Operation

RIG CREW TRAVELED TO THE THOMPSON 8M.
MOVE RIG AND SUPPORT EQUIPMENT TO THE KING 1A. RIG MOVE TOOK LONGER DUE TO HEAVY SNOW SHUTTING DOWN RIG MOVE FOR A PERIOD OF TIME.
RIG UP RIG AND SUPPORT EQUIPMENT.
SAFETY MEETING. TOOK PRESSURES ON WELL. CASING 55. TUBING 55 BH 60 PSI. BLOW DOWN WELL IN 10 MINUTES. TUBING DEAD. BLEW BH DOWN FOR 5 MNUTES TO A STEADY BLOW AND SHUT BACK IN.
DRY ROD TWC IN TUBING HANGER. ND WH. NU BOP. RIG UP WELLCHECK. CHART TEST BOP PIPE AND BLIND RAMS TO 300 PSI LOW AND 2500 PSI HIGH. TEST GOOD. PULL TUBING HANGER TO THE RIG FLOOR. REMOVE TWC. LAY DOWN TUBING HANGER.
TRIP OUT OF THE HOLE WITH THE 2 3/8" PRODUCTION STRING FROM A DEPTH OF 2856'.
MAKE UP 3 7/8" JUNK MILL. TALLY AND TRIP IN THE HOLE TO TAG UP DEPTH OF 3107'. LINER TOP AT 3115'. TRIP OUT OF THE HOLE WITH 10 STANDS TO 2463'. TOP PERF IS AT 2622'
SHUT THE WELL IN. SECURE LOCATION. SHUT DOWN FOR THE DAY.

TRAVEL TO YARD

Report Number 13	Report Start Date 11/5/2024	Report End Date 11/5/2024
---------------------	--------------------------------	------------------------------

Operation

RIG CREW TRAVELED TO LOCATION.
SAFETY MEETING ON TODAYS OPS. TOOK WELLHEAD PRESSURES. CASING 80 PSI. TUBING 100 PSI. BH 20 PSI. BLEW WELL DOWN IN 8 MINUTES.
TRIP IN THE HOLE FROM 2463' TO TAG UP DEPTH OF 3107'.
RIG UP POWER SWIVEL. BRING ON 12 BBL PER HOUR AIR FOAM MIST. ESTABLISH GOOD CIRCULATION TO PIT. START MILL OUT/CLEAN OUT AT 3107' MILLING UP REMAINS OF PLUG PARTS AND FRAC BAFFLE ON LINER TOP AT 3115'. CLEAN OUT TO CIBP AT 3600'. CIRCULATING PRESSURE AT 350 PSI. AFTER MILLING ON THE CIBP AT 3600' FOR TWO HOURS OUR PRESSURE INCREASED TO 500 PSI FOR 15 MINUTES THEN DROPPED DOWN TO 450 PSI. OUR FLOW TO OUR PIT INCREASED. SHUT AIR UNIT DOWN. PLUG IS NOT COMPLETELY MILLED UP. HANG BACK SWIVEL.
TRIP OUT OF THE HOLE TO 2463'.
SHUT THE WELL IN. SECURE LOCATION. SHUT DOWN FOR THE DAY.

TRAVEL HOME

Report Number 14	Report Start Date 11/6/2024	Report End Date 11/6/2024
---------------------	--------------------------------	------------------------------

Operation

RIG CREW TRAVELED TO LOCATION.
SAFETY MEETING WITH CREW. TOOK PRESSURES ON WELL. CASING 90 PSI. TUBING 0 PSI. BH 25 PSI. BLOW WELL DOWN IN 9 MINUTES.
TRIP IN THE HOLE FROM 2463' TO CIBP AT 3600'. TAG UP AT 3115'/PLUG PARTS.
RIG UP SWIVEL. BRING ON 1300 CFM AIR AT 12 BBL PER HOUR AIR FOAM MIST. IT TOOK 60 MINUTES TO ESTABLISH GOOD CIRCULATION TO OPEN TOP TANK. MILL OUT PLUG PARTS AT LINER TOP BY 10:30 AM. PUMP SWEEPS. SHUT AIR UNIT DOWN. HANG BACK SWIVEL. PUSHED PLUG PARTS DOWN HOLE WITH THE 3 7/8' JUNK MILL FROM 3115' TO 3600'. SWIVELED BACK UP AND BRING 12 BBL PER HOUR AIR FOAM MIST BACK ON. ESTABLISH GOOD CIRCULATION. FINISH MILLING OUT CIBP AT 3600'. ONCE WE FINISHED MILLING UP THE CIBP. THE PRESSURE INCREASED FROM 450 PSI TO 500 PSI FOR @ 10 MINUTES. THEN THE PRESSURE DROPPED BACK TO 450 PSI. CIRCULATED THE HOLE CLEAN. SHUT AIR UNIT DOWN.
TALLY. PICK UP AND TRIP IN THE HOLE FROM 3600' TO TAG UP DEPTH OF 4623'. COULD NOT PUSH PAST THIS POINT. WILL SWIVEL BACK UP.
SWIVEL UP. ESTABLISH 12 BBL PER HOUR AIR FOAM MIST TO OPEN TOP TANK. MILL DOWN FROM 4623' TO 4626'. HARD MILLING. CIRCULATE HOLE CLEAN. SHUT AIR UNIT DOWN. HANG BACK SWIVEL.

TRIP OUT OF THE HOLE WITH 34 STANDS FROM 4626' TO 2463'. WE HAD SOME DRAG COMING OUT OF THE LINER WITH 3 7/8" JUNK MILL. POSSIBLLY PLUG PARTS BESIDE US.
SHUT WELL IN. SECURE LOCATION. WINTERIZE EQUIPMENT. SHUT DOWN FOR THE DAY.

TRAVEL TO YARD.

Report Number 15	Report Start Date 11/7/2024	Report End Date 11/7/2024
---------------------	--------------------------------	------------------------------

Operation

TRAVEL TO WELLSITE. ROADS SNOW PACKED & SLICK.
SAFETY MEETING WITH CREW.
CHECK WELL PRESSURES. SITP-0 PSI. SICP-90 PSI. SIBHP- 25 PSI. OPEN WELL TO TANK. BLOWDOWN IN 10 MINUTES TO LIGHT BLOW. SERVICE & START EQUIPMENT.

TRIP IN WITH TUBING/MILL. TAG TRASH/TIGHT SPOT AT 4,626' (YESTERDAYS CLEANOUT DEPTH).
RIG UP POWER SWIVEL. PREPARE TO CONTINUE CLEANOUT/MILLING OPERATIONS.



Well Operations Summary L48

Well Name: KING #1A

API: 3004523709	Field: BLANCO MESAVERDE (PRORATED GAS	State: NEW MEXICO
	Sundry #:	Rig/Service: RIO 22

Operation

START AIR UNIT AT 1,300 CFM WITH FOAMER/MIST AT 12 BPH. AIR UNIT AT 350 TO 400 PSI. CONTINUE MILLING ON TRASH OR TIGHT SPOT AT 4,626'. SAMPLES HAD SMALL SCALE PIECES, COAL FINES AND SOME FRAC SAND AT ABOUT 1/4 CUP PER 5 GALLONS. MILLED TO 4,646' IN 1 1/2" HOURS. MADE WATER AT 1 TO 2 BBLs ADDITIONAL OVER THE MIST RATE. CONTINUE MILLING DOWN TO 4,835'. STARTED MAKING BETTER FOOTAGE, CONTINUED DOWN TO 5,464' (PBDT AT 5,573'). DRY UP TUBING & SHUTDOWN AIR/MIST.

CALLED HEC ENGINEERING. WILL CALL FOR ANALYSIS OF SCALE SAMPLE BY D.BOUNDS. SCALE SAMPLE IS ACID REACTIVE. ACID JOB TO BE SET UP BY D.BOUNDS.

TRIP OUT WITH TUBING/MILL TO 3,127' (LINER TOP AT 3,115').

MOVE IN RIG CREEDENCE CHEMICAL SERVICES FOR SCALE TREATMENT:

- #1- PUMP 300 GALS OF ACI-110X (15% HCL ACID) WITH 6 GAL CHELATOR, 5 GAL FOAMER, 5 GAL SCALE INHIBITOR, AND 15 GAL H2S SCAVENGER.
- #2- FLUSHED WITH 300 GALS OF 2% KCL WATER.

ALL OF TREATMENT WAS PUMP DOWN THE CASING. RIG DOWN, RELEASED CREEDENCE SERVICES.

SHUT WELL IN. SECURE LOCATION. WINTERIZE EQUIPMENT. SHUT DOWN FOR THE DAY.

TRAVEL TO YARD.

Report Number	Report Start Date	Report End Date
16	11/8/2024	11/8/2024

Operation

RIG CREW TRAVEL TO LOCATION. ROADS WET AND SNOWY. SAFETY MEETING WITH CREW. TOOK PRESSURES ON WELL. CASING 140. TUBING 75. BH 20 PSI. BLOW WELL DOWN IN 11 MINUTES. TRIP IN THE HOLE WITH TUBING AND 3 7/8" JUNK MILL FROM 3,127' TO 5464' WITH 173 JOINTS OF TUBING. (PBDT 5573').

PICK UP JOINT 174. RIG UP POWER SWIVEL. BRING ON 12 BBL PER HOUR AIR FOAM MIST. MILL OUT TO TO FINAL DEPTH OF 5573'. NO FILL. JUST SCALE. CIRCULATED ON BOTTOM PUMPING SWEEPS UNTIL RETURNS WERE DOWN TO A TRACE OF SOLIDS IN 5 GALLON BUCKET TEST. SHUT AIR UNIT DOWN.

TRIP OUT OF THE HOLE WITH THE 3 7/8" JUNK MILL FROM 5573'.

TRIP IN THE HOLE WITH THE 30' X 2 3/8" PRICE TYPE MUD ANCHOR. 1.780 ID SEATING NIPPLE. ONE JOINT OF 2 3/8" TUBING. 2' X 2 3/8" MARKER JOINT. 173 JOINTS OF 2 3/8" TUBING AND 7 1/6" TUBING HANGER. TUBING LANDED AT A DEPTH OF 5530'. SEATING NIPPLE AT 5499'. PBDT AT 5573'.

ND BOP. NU WH.

PICK UP AND BUCKET TEST ROD PUMP. TEST GOOD. TRIP IN THE HOLE AS FOLLOWS. 1' X 1" STRAINER NIPPLE. 2" X 1-1/4" X 11' X 15 RHAC-Z HVR PUMP(HIL 1075). 1' X 1" LIFT SUB. 8' x 3/4" GUIDED PONY ROD. 21K SHEAR TOOL. EIGHT 1 1/4" SINKER BARS. FORTY 3/4" SLICK RODS. PICK UP POLISH ROD. MAKE UP STUFFING BOX ON RATIGAN.

SHUT WELL IN. SECURE LOCATION. SHUT DOWN RIG OPS FOR THE DAY.

TRAVEL TO YARD.

Report Number	Report Start Date	Report End Date
17	11/11/2024	11/11/2024

Operation

RIG CREW TRAVEL TO LOCATION. SAFETY MEETING WITH CREW. TOOK PRESSURES ON WELL. CASING 144 PSI. TUBING 0 PSI. BH 20 PSI. BLOW WELL DOWN IN 12 MINUTES. CONTINUE PICKING UP AND TRIPPING IN THE HOLE WITH 3/4" RODS AND PUMP FROM A DEPTH OF 1223' TO LAND DEPTH OF 5499'/SN. PRESSURE TESTED TUBING TO 500 PSI. GOOD TEST. BLEED PRESSURE DOWN TO 100 PSI. LONG STROKE PUMP WITH THE RIG TO 600 PSI IN 6 STROKES. GOOD PUMP ACTION. BLEED OFF PRESSURE. SPACE OUT AND CLAMP OFF ROD STRING. SHUT THE WELL IN. RIG DOWN RIG AND SUPPORT EQUIPMENT. TURN WELL OVER TO PRODUCTION OPERATIONS. JOB COMPLETE.

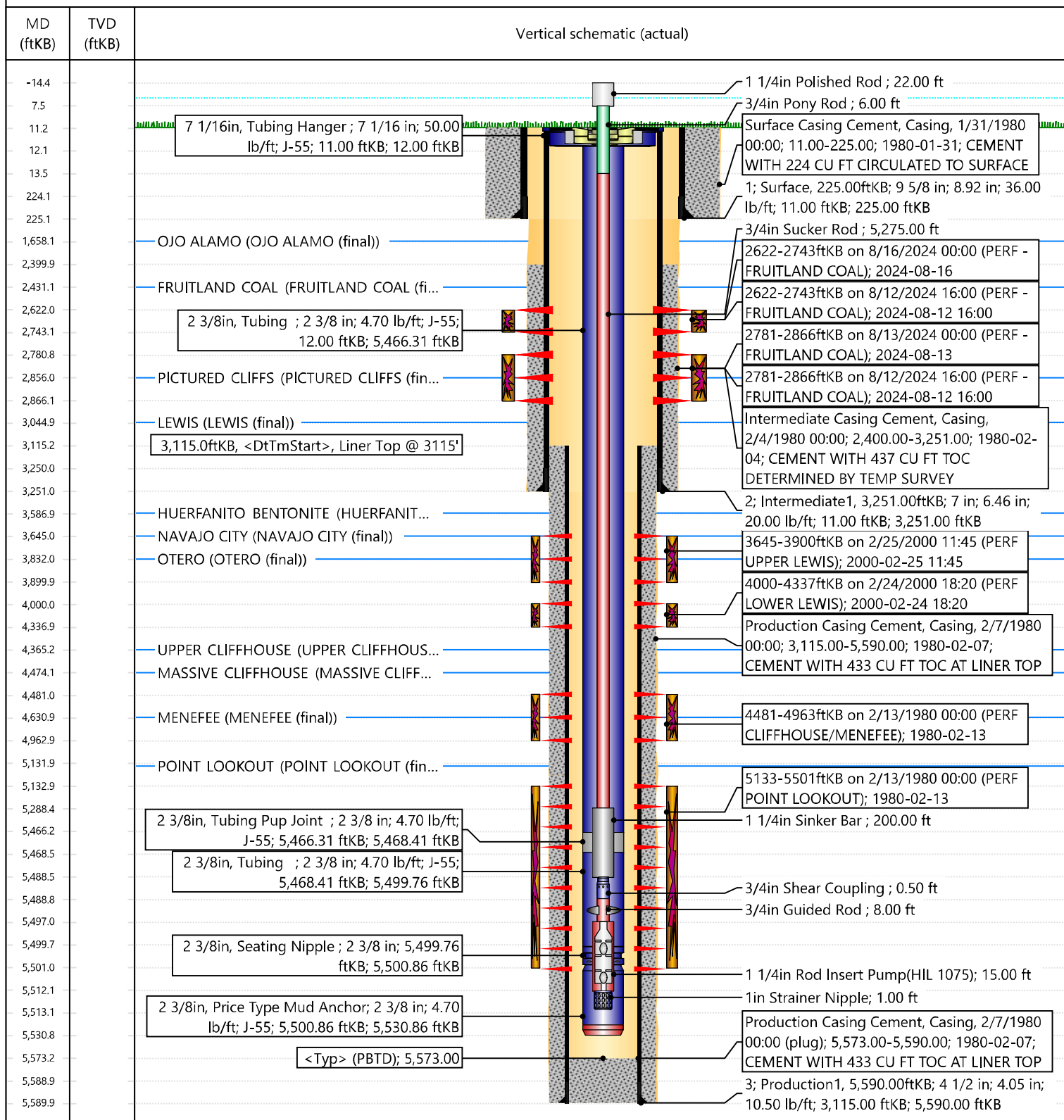


Current Schematic - Version 3

Well Name: KING #1A

API / UWI 3004523709	Surface Legal Location 022-030N-010W-P	Field Name BLANCO MESAVERDE (PRORATED GAS)	Route 0305	State/Province NEW MEXICO	Well Configuration Type
Ground Elevation (ft) 6,272.00	Original KB/RT Elevation (ft) 6,283.00	Tubing Hanger Elevation (ft)	RKB to GL (ft) 11.00	KB-Casing Flange Distance (ft)	KB-Tubing Hanger Distance (ft)
Tubing Strings					
Run Date 11/8/2024 14:00	Set Depth (ftKB) 5,530.86	String Max Nominal OD (in) 2 3/8	String Min Nominal ID (in) 2.00	Weight/Length (lb/ft) 4.70	Original Spud Date 1/31/1980 00:00

Original Hole



Sante Fe Main Office
Phone: (505) 476-3441

General Information
Phone: (505) 629-6116

Online Phone Directory
<https://www.emnrd.nm.gov/oed/contact-us>

State of New Mexico
Energy, Minerals and Natural Resources
Oil Conservation Division
1220 S. St Francis Dr.
Santa Fe, NM 87505

CONDITIONS

Action 403627

CONDITIONS

Operator: HILCORP ENERGY COMPANY 1111 Travis Street Houston, TX 77002	OGRID: 372171
	Action Number: 403627
	Action Type: [C-103] Sub. Workover (C-103R)

CONDITIONS

Created By	Condition	Condition Date
smcgrath	None	12/30/2024