

C-102 Submit Electronically Via OCD Permitting	State of New Mexico Energy, Minerals & Natural Resources Department OIL CONSERVATION DIVISION	Revised July 9, 2024	
		Submittal Type:	<input checked="" type="checkbox"/> Initial Submittal
			<input type="checkbox"/> Amended Report
			<input type="checkbox"/> As Drilled

WELL LOCATION INFORMATION

API Number	Pool Code 98136	Pool Name WC-025 G-07 S223505N; Bone Spring
Property Code	Property Name CASA BONITA 5 STATE COM	Well Number 302H
OGRID No. 372165	Operator Name PERMIAN RESOURCES OPERATING, LLC	Ground Level Elevation 3,639.00'
Surface Owner: <input checked="" type="checkbox"/> State <input type="checkbox"/> Fee <input type="checkbox"/> Tribal <input type="checkbox"/> Federal		Mineral Owner: <input checked="" type="checkbox"/> State <input type="checkbox"/> Fee <input type="checkbox"/> Tribal <input type="checkbox"/> Federal

Surface Location

UL N	Section 32	Township 21S	Range 35E	Lot	Ft. from N/S 316' FSL	Ft. from E/W 1,453' FWL	Latitude 32.429082°	Longitude -103.393543°	County LEA
----------------	----------------------	------------------------	---------------------	-----	---------------------------------	-----------------------------------	-------------------------------	----------------------------------	----------------------

Bottom Hole Location

UL N	Section 8	Township 22S	Range 35E	Lot	Ft. from N/S 100' FSL	Ft. from E/W 1,980' FWL	Latitude 32.399253°	Longitude -103.391811°	County LEA
----------------	---------------------	------------------------	---------------------	-----	---------------------------------	-----------------------------------	-------------------------------	----------------------------------	----------------------

Dedicated Acres 322.19	Infill or Defining Well Defining	Defining Well API	Overlapping Spacing Unit (Y/N) N	Consolidation Code
Order Numbers.			Well setbacks are under Common Ownership: <input checked="" type="checkbox"/> Yes <input type="checkbox"/> No	

Kick Off Point (KOP)

UL N	Section 32	Township 21S	Range 35E	Lot	Ft. from N/S 316' FSL	Ft. from E/W 1,453' FWL	Latitude 32.429082°	Longitude -103.393543°	County LEA
----------------	----------------------	------------------------	---------------------	-----	---------------------------------	-----------------------------------	-------------------------------	----------------------------------	----------------------

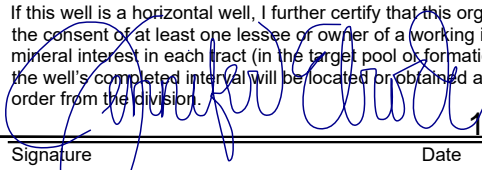
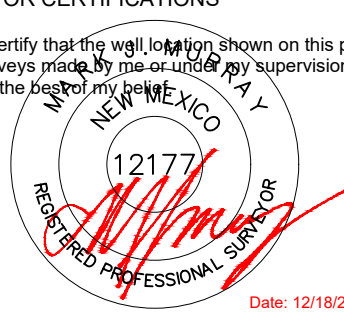
First Take Point (FTP)

UL LOT 3	Section 5	Township 22S	Range 35E	Lot	Ft. from N/S 100' FNL	Ft. from E/W 1,980' FWL	Latitude 32.427941°	Longitude -103.391840°	County LEA
--------------------	---------------------	------------------------	---------------------	-----	---------------------------------	-----------------------------------	-------------------------------	----------------------------------	----------------------

Last Take Point (LTP)

UL N	Section 8	Township 22S	Range 35E	Lot	Ft. from N/S 100' FSL	Ft. from E/W 1,980' FWL	Latitude 32.399253°	Longitude -103.391811°	County LEA
----------------	---------------------	------------------------	---------------------	-----	---------------------------------	-----------------------------------	-------------------------------	----------------------------------	----------------------

Unitized Area or Area of Uniform Interest	Spacing Unit Type <input checked="" type="checkbox"/> Horizontal <input type="checkbox"/> Vertical	Ground Floor Elevation:
---	--	-------------------------

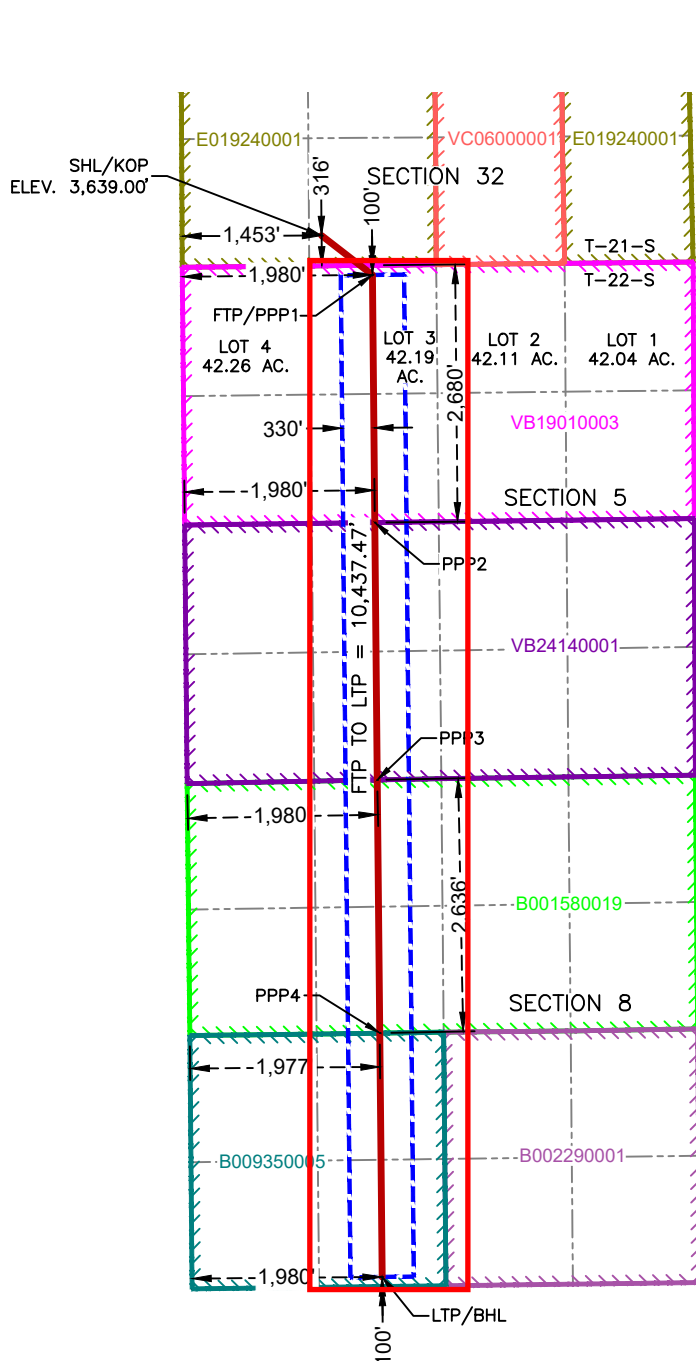
OPERATOR CERTIFICATIONS I hereby certify that the information contained herein is true and complete to the best of my knowledge and belief, and, if the well is a vertical or directional well, that this organization either owns a working interest or unleased mineral interest in the land including the proposed bottom hole location or has a right to drill this well at this location pursuant to a contract with an owner of a working interest or unleased mineral interest, or to a voluntary pooling agreement or a compulsory pooling order heretofore entered by the division. If this well is a horizontal well, I further certify that this organization has received the consent of at least one lessee or owner of a working interest or unleased mineral interest in each tract (in the target pool or formation) in which any part of the well's completed interval will be located or obtained a compulsory pooling order from the division.  12/19/2024 Signature _____ Date _____ Jennifer Elrod Printed Name _____ jennifer.elrod@permianres.com Email Address _____		SURVEYOR CERTIFICATIONS I hereby certify that the well location shown on this plat was plotted from field notes of actual surveys made by me or under my supervision, and that the same is true and correct to the best of my belief.  Date: 12/18/2024 Signature and Seal of Professional Surveyor _____ Certificate Number _____ Date of Survey _____ 12177 12/18/2024	
--	--	---	--

Note: No allowable will be assigned to this completion until all interests have been consolidated or a non-standard unit has been approved by the division.

ACREAGE DEDICATION PLATS

This grid represents a standard section. You may superimpose a non-standard section, or larger area, over this grid. Operators must outline the dedicated acreage in a red box, clearly show the well surface location and bottom hole location, if it is directionally drilled, with the dimensions from the section lines in the cardinal directions. If this is a horizontal wellbore show on this plat the location of the First Take Point and Last Take Point, and the point within the Completed interval (other than the First Take Point or Last Take Point) that is closest to any outer boundary of the tract.

Surveyors shall use the latest United States government survey or dependent resurvey. Well locations will be in reference to the New Mexico Principal Meridian. If the land is not surveyed, contact the OCD Engineering Bureau. Independent subdivision surveys will not be acceptable.



SURFACE HOLE LOCATION
& KICK-OFF POINT
316' FSL & 1,453' FWL
ELEV. = 3,639.00'

NAD 83 X = 831,301.85'
NAD 83 Y = 521,106.57'
NAD 83 LAT = 32.429082°
NAD 83 LONG = -103.393543°
NAD 27 X = 790,118.46'
NAD 27 Y = 521,045.41'
NAD 27 LAT = 32.428958°
NAD 27 LONG = -103.393066°

FIRST TAKE POINT &
PENETRATION POINT 1
100' FNL & 1,980' FWL

NAD 83 X = 831,831.16'
NAD 83 Y = 520,695.94'
NAD 83 LAT = 32.427941°
NAD 83 LONG = -103.391840°
NAD 27 X = 790,647.74'
NAD 27 Y = 520,634.79'
NAD 27 LAT = 32.427816°
NAD 27 LONG = -103.391362°

PENETRATION POINT 2
2,680' FNL & 1,980' FWL

NAD 83 X = 831,855.55'
NAD 83 Y = 518,116.17'
NAD 83 LAT = 32.420850°
NAD 83 LONG = -103.391834°
NAD 27 X = 790,672.08'
NAD 27 Y = 518,055.09'
NAD 27 LAT = 32.420725°
NAD 27 LONG = -103.391357°

PENETRATION POINT 3
0' FSL & 1,980' FWL

NAD 83 X = 831,880.89'
NAD 83 Y = 515,436.05'
NAD 83 LAT = 32.413483°
NAD 83 LONG = -103.391829°
NAD 27 X = 790,697.37'
NAD 27 Y = 515,375.04'
NAD 27 LAT = 32.413358°
NAD 27 LONG = -103.391352°

PENETRATION POINT 4
2,636' FNL & 1,977' FWL

NAD 83 X = 831,906.88'
NAD 83 Y = 512,799.71'
NAD 83 LAT = 32.406237°
NAD 83 LONG = -103.391820°
NAD 27 X = 790,723.31'
NAD 27 Y = 512,738.77'
NAD 27 LAT = 32.406112°
NAD 27 LONG = -103.391343°

LAST TAKE POINT &
BOTTOM HOLE LOCATION
100' FSL & 1,980' FWL

NAD 83 X = 831,931.94'
NAD 83 Y = 510,258.96'
NAD 83 LAT = 32.399253°
NAD 83 LONG = -103.391811°
NAD 27 X = 790,748.31'
NAD 27 Y = 510,198.10'
NAD 27 LAT = 32.399128°
NAD 27 LONG = -103.391334°



Date: 12/18/2024

Sante Fe Main Office
Phone: (505) 476-3441

General Information
Phone: (505) 629-6116

Online Phone Directory
<https://www.emnrd.nm.gov/oed/contact-us>

State of New Mexico
Energy, Minerals and Natural Resources
Oil Conservation Division
1220 S. St Francis Dr.
Santa Fe, NM 87505

CONDITIONS

Action 416040

CONDITIONS

Operator: Permian Resources Operating, LLC 300 N. Marienfeld St Ste 1000 Midland, TX 79701	OGRID: 372165
	Action Number: 416040
	Action Type: [C-102] Well Location & Acreage Plat (C-102)

CONDITIONS

Created By	Condition	Condition Date
pkautz	None	12/31/2024