

Form 3160-5
(June 2015)UNITED STATES
DEPARTMENT OF THE INTERIOR
BUREAU OF LAND MANAGEMENTFORM APPROVED
OMB NO. 1004-0137
Expires: January 31, 2018**SUNDRY NOTICES AND REPORTS ON WELLS**
Do not use this form for proposals to drill or to re-enter an abandoned well. Use form 3160-3 (APD) for such proposals.5. Lease Serial No.
NMNM122620

6. If Indian, Allottee or Tribe Name

7. If Unit or CA/Agreement, Name and/or No.

8. Well Name and No.
RED HILLS FEDERAL 506H9. API Well No.
30-025-47189-00-X110. Field and Pool or Exploratory Area
WILDCAT11. County or Parish, State
LEA COUNTY, NM**SUBMIT IN TRIPLICATE - Other instructions on page 2**

1. Type of Well

☒ Oil Well ☐ Gas Well ☐ Other

2. Name of Operator

KAISER FRANCIS OIL COMPANY

Contact: ERIC HANSEN

E-Mail: EricH@KFOC.net

3a. Address

TULSA, OK 74121-1468

3b. Phone No. (include area code)

Ph: 918-491-4339

4. Location of Well (Footage, Sec., T., R., M., or Survey Description)

Sec 31 T25S R33E NENE 250FNL 850FEL
32.093494 N Lat, 103.606194 W Lon**12. CHECK THE APPROPRIATE BOX(ES) TO INDICATE NATURE OF NOTICE, REPORT, OR OTHER DATA**

TYPE OF SUBMISSION	TYPE OF ACTION			
<input checked="" type="checkbox"/> Notice of Intent	<input type="checkbox"/> Acidize	<input type="checkbox"/> Deepen	<input type="checkbox"/> Production (Start/Resume)	<input type="checkbox"/> Water Shut-Off
<input type="checkbox"/> Subsequent Report	<input type="checkbox"/> Alter Casing	<input type="checkbox"/> Hydraulic Fracturing	<input type="checkbox"/> Reclamation	<input type="checkbox"/> Well Integrity
<input type="checkbox"/> Final Abandonment Notice	<input type="checkbox"/> Casing Repair	<input type="checkbox"/> New Construction	<input type="checkbox"/> Recomplete	<input checked="" type="checkbox"/> Other
	<input type="checkbox"/> Change Plans	<input type="checkbox"/> Plug and Abandon	<input type="checkbox"/> Temporarily Abandon	Change to Original A
	<input type="checkbox"/> Convert to Injection	<input type="checkbox"/> Plug Back	<input type="checkbox"/> Water Disposal	PD

13. Describe Proposed or Completed Operation: Clearly state all pertinent details, including estimated starting date of any proposed work and approximate duration thereof. If the proposal is to deepen directionally or recompleat horizontally, give subsurface locations and measured and true vertical depths of all pertinent markers and zones. Attach the Bond under which the work will be performed or provide the Bond No. on file with BLM/BIA. Required subsequent reports must be filed within 30 days following completion of the involved operations. If the operation results in a multiple completion or recompleat in a new interval, a Form 3160-4 must be filed once testing has been completed. Final Abandonment Notices must be filed only after all requirements, including reclamation, have been completed and the operator has determined that the site is ready for final inspection.

Kaiser-Francis Oil Company requests to move the surface hole location as follows:

Approved SHL Location: 300' FNL & 1035' FEL, Section 31, T25S, R33E

Approved BHL Location: 100' FSL & 850' FEL, Section 6, T26S, R33E

Proposed SHL Location: 250' FNL & 850' FEL, Section 31, T25S, R33E

Updated SHL to allow multiple rigs on location while maintaining a safe working area.

This will help the drilling operations move safely around location and help maximize pad space usage without causing additional surface disturbances. No additional surface disturbance is requested.

14. I hereby certify that the foregoing is true and correct.

Electronic Submission #519510 verified by the BLM Well Information System**For KAISER FRANCIS OIL COMPANY, sent to the Hobbs****Committed to AFMSS for processing by JUANA MEDRANO on 06/18/2020 (20JM0143SE)**

Name (Printed/Typed) ERIC HANSEN

Title DRILLING ENGINEER

Signature (Electronic Submission)

Date 06/18/2020

THIS SPACE FOR FEDERAL OR STATE OFFICE USE

Approved By CODY LAYTON

Title ASSISTANT FIELD MANAGER

Date 07/10/2020

Conditions of approval, if any, are attached. Approval of this notice does not warrant or certify that the applicant holds legal or equitable title to those rights in the subject lease which would entitle the applicant to conduct operations thereon.

Office Hobbs

Title 18 U.S.C. Section 1001 and Title 43 U.S.C. Section 1212, make it a crime for any person knowingly and willfully to make to any department or agency of the United States any false, fictitious or fraudulent statements or representations as to any matter within its jurisdiction.

(Instructions on page 2)

**** BLM REVISED ** BLM REVISED ** BLM REVISED ** BLM REVISED ** BLM REVISED ****

Additional data for EC transaction #519510 that would not fit on the form

32. Additional remarks, continued

Attached is the updated C-102 and well site diagram.

Red Hills Federal 506H API 30-025-47189

Revisions to Operator-Submitted EC Data for Sundry Notice #519510

	Operator Submitted	BLM Revised (AFMSS)
Sundry Type:	APDCH NOI	APDCH NOI
Lease:	NMNM122620	NMNM122620
Agreement:		
Operator:	KAISER FRANCIS OIL COMPANY 6733 SOUTH YALE AVE TULSA, OK 74136 Ph: 918-491-4339	KAISER FRANCIS OIL COMPANY TULSA, OK 74121-1468 Ph: 918-491-4314
Admin Contact:	ERIC HANSEN DRILLING ENGINEER E-Mail: EricH@KFOC.net Ph: 918-491-4339	ERIC HANSEN DRILLING ENGINEER E-Mail: EricH@KFOC.net Ph: 918-491-4339
Tech Contact:	ERIC HANSEN DRILLING ENGINEER E-Mail: EricH@KFOC.net Ph: 918-491-4339	ERIC HANSEN DRILLING ENGINEER E-Mail: EricH@KFOC.net Ph: 918-491-4339
Location:		
State:	NM	NM
County:	LEA	LEA
Field/Pool:	WOLFCAMP	WILDCAT
Well/Facility:	RED HILLS FEDERAL 506H Sec 31 T25S R33E Mer NMP FSL FWL	RED HILLS FEDERAL 506H Sec 31 T25S R33E NENE 250FNL 850FEL 32.093494 N Lat, 103.606194 W Lon

District I

1625 N. French Dr., Hobbs, NM 88240
Phone: (575) 393-6161 Fax: (575) 393-0720

District II

811 S. First St., Artesia, NM 88210
Phone: (575) 748-1283 Fax: (575) 748-9720

District III

1000 Rio Brazos Road, Aztec, NM 87410
Phone: (505) 334-6178 Fax: (505) 334-6170

District IV

1220 S. St. Francis Dr., Santa Fe, NM 87505
Phone: (505) 476-3460 Fax: (505) 476-3462

State of New Mexico

Energy, Minerals & Natural Resources Department

OIL CONSERVATION DIVISION

1220 South St. Francis Dr.

Santa Fe, NM 87505

Form C-102

Revised August 1, 2011

Submit one copy to appropriate

District Office

☐ AMENDED REPORT

WELL LOCATION AND ACREAGE DEDICATION PLAT

¹ API Number 30-025-47189	² Pool Code 98158	³ Pool Name Wolfcamp
⁴ Property Code 5467	⁵ Property Name RED HILLS	⁶ Well Number 506H
⁷ OGRID No. 12361	⁸ Operator Name KAISER-FRANCIS OIL CO.	⁹ Elevation 3398.8

¹⁰ Surface Location

UL or lot no.	Section	Township	Range	Lot Idn	Feet from the	North/South line	Feet from the	East/West line	County
A	31	25 S	33 E		250	NORTH	850	EAST	LEA

¹¹ Bottom Hole Location If Different From Surface

UL or lot no.	Section	Township	Range	Lot Idn	Feet from the	North/South line	Feet from the	East/West line	County
P	6	26 S	33 E		100	SOUTH	850	EAST	LEA

¹² Dedicated Acres	¹³ Joint or Infill	¹⁴ Consolidation Code	¹⁵ Order No.
640			R-21511

No allowable will be assigned to this completion until all interests have been consolidated or a non-standard unit has been approved by the division.

<p>NW CORNER SEC. 31 LAT. = 32.0941881°N LONG. = 103.6194479°W</p> <p>NMSP EAST (FT) N = 398720.94 E = 721076.67</p> <p>W/4 CORNER SEC. 31 LAT. = 32.0869303°N LONG. = 103.6194502°W</p> <p>NMSP EAST (FT) N = 396080.72 E = 721093.44</p> <p>SW CORNER SEC. 31 LAT. = 32.0796734°N LONG. = 103.6194237°W</p> <p>NMSP EAST (FT) N = 393440.92 E = 721119.12</p> <p>W/4 CORNER SEC. 6 LAT. = 32.0723542°N LONG. = 103.6193970°W</p> <p>NMSP EAST (FT) N = 390778.44 E = 721145.01</p> <p>SW CORNER SEC. 6 LAT. = 32.0651678°N LONG. = 103.6193696°W</p> <p>NMSP EAST (FT) N = 388164.29 E = 721170.80</p>		<p>N89°33'55"E 2650.63 FT N89°36'15"E 2635.02 FT</p> <p>N/4 CORNER SEC. 31 LAT. = 32.0941949°N LONG. = 103.6108908°W</p> <p>NMSP EAST (FT) N = 398741.05 E = 723726.70</p> <p>FIRST TAKE POINT 100' FNL, 850' FEL LAT. = 32.0939210°N LONG. = 103.6051281°W</p> <p>NMSP EAST (FT) N = 398653.42 E = 725512.01</p> <p>S/4 CORNER SEC. 31 LAT. = 32.0796695°N LONG. = 103.6109216°W</p> <p>NMSP EAST (FT) N = 393457.03 E = 723752.53</p> <p>NOTE: LATITUDE AND LONGITUDE COORDINATES ARE SHOWN USING THE NORTH AMERICAN DATUM OF 1927 (NAD27). LISTED NEW MEXICO STATE PLANE EAST COORDINATES ARE GRID (NAD27). BASIS OF BEARING AND DISTANCES USED ARE NEW MEXICO STATE PLANE EAST (NAD83) COORDINATES MODIFIED TO THE SURFACE. ELEVATION VALUES ARE NAVD 88.</p> <p>BOTTOM OF HOLE LAT. = 32.0654474°N LONG. = 103.6051235°W</p> <p>NMSP EAST (FT) N = 388295.50 E = 725583.36</p> <p>S89°38'59"W 2633.99 FT S89°36'23"W 2643.42 FT</p> <p>S89°35'41"W 2632.14 FT S89°35'41"W 2632.14 FT</p>		<p>NE CORNER SEC. 31 LAT. = 32.0941962°N LONG. = 103.6023840°W</p> <p>NMSP EAST (FT) N = 398759.27 E = 726361.14</p> <p>E/4 CORNER SEC. 31 LAT. = 32.0869447°N LONG. = 103.6023838°W</p> <p>NMSP EAST (FT) N = 396121.39 E = 726379.07</p> <p>SE CORNER SEC. 31 LAT. = 32.0796705°N LONG. = 103.6023891°W</p> <p>NMSP EAST (FT) N = 393475.19 E = 726395.36</p> <p>E/4 CORNER SEC. 6 LAT. = 32.0723998°N LONG. = 103.6023843°W</p> <p>NMSP EAST (FT) N = 390830.31 E = 726414.79</p> <p>SE CORNER SEC. 6 LAT. = 32.0651734°N LONG. = 103.6023801°W</p> <p>NMSP EAST (FT) N = 388201.54 E = 726433.89</p>		<p>¹⁷ OPERATOR CERTIFICATION</p> <p>I hereby certify that the information contained herein is true and complete to the best of my knowledge and belief, and that this organization either owns a working interest or unleased mineral interest in the land including the proposed bottom hole location or has a right to drill this well at this location pursuant to a contract with an owner of such a mineral or working interest, or to a voluntary pooling agreement or a compulsory pooling order heretofore entered by the division.</p> <p>Eric Hansen 6/18/20 Signature Date</p> <p>Eric Hansen Printed Name</p> <p>EricH@kfoc.net E-mail Address</p> <p>¹⁸ SURVEYOR CERTIFICATION</p> <p>I hereby certify that the well location shown on this plat was plotted from field notes of actual surveys made by me or under my supervision, and that the same is true and correct to the best of my belief.</p> <p>JUNE 16, 2020 Date of Survey</p> <p>WILLIAM F. JARAMILA Signature and Seal of Professional Surveyor</p> <p>Certificate Number: FILED ON BEARINGS PLS 12797 SURVEY NO. 6448D</p>	
--	--	---	--	--	--	--	--

Intent ☐ As Drilled ☐

API #		
Operator Name: KAISER-FRANCIS OIL CO.	Property Name: RED HILLS	Well Number 506H

Kick Off Point (KOP)

UL A	Section 31	Township 25S	Range 33E	Lot	Feet 250	From N/S NORTH	Feet 850	From E/W EAST	County LEA
Latitude 32.0935086					Longitude 103.6051281			NAD 27	

First Take Point (FTP)

UL A	Section 31	Township 25S	Range 33E	Lot	Feet 100	From N/S NORTH	Feet 850	From E/W EAST	County LEA
Latitude 32.0939210					Longitude 103.6051281			NAD 27	

Last Take Point (LTP)

UL P	Section 6	Township 26S	Range 33E	Lot	Feet 100	From N/S SOUTH	Feet 850	From E/W EAST	County LEA
Latitude 32.0654474					Longitude 103.6051235			NAD 27	

Is this well the defining well for the Horizontal Spacing Unit? ☐Is this well an infill well? ☐

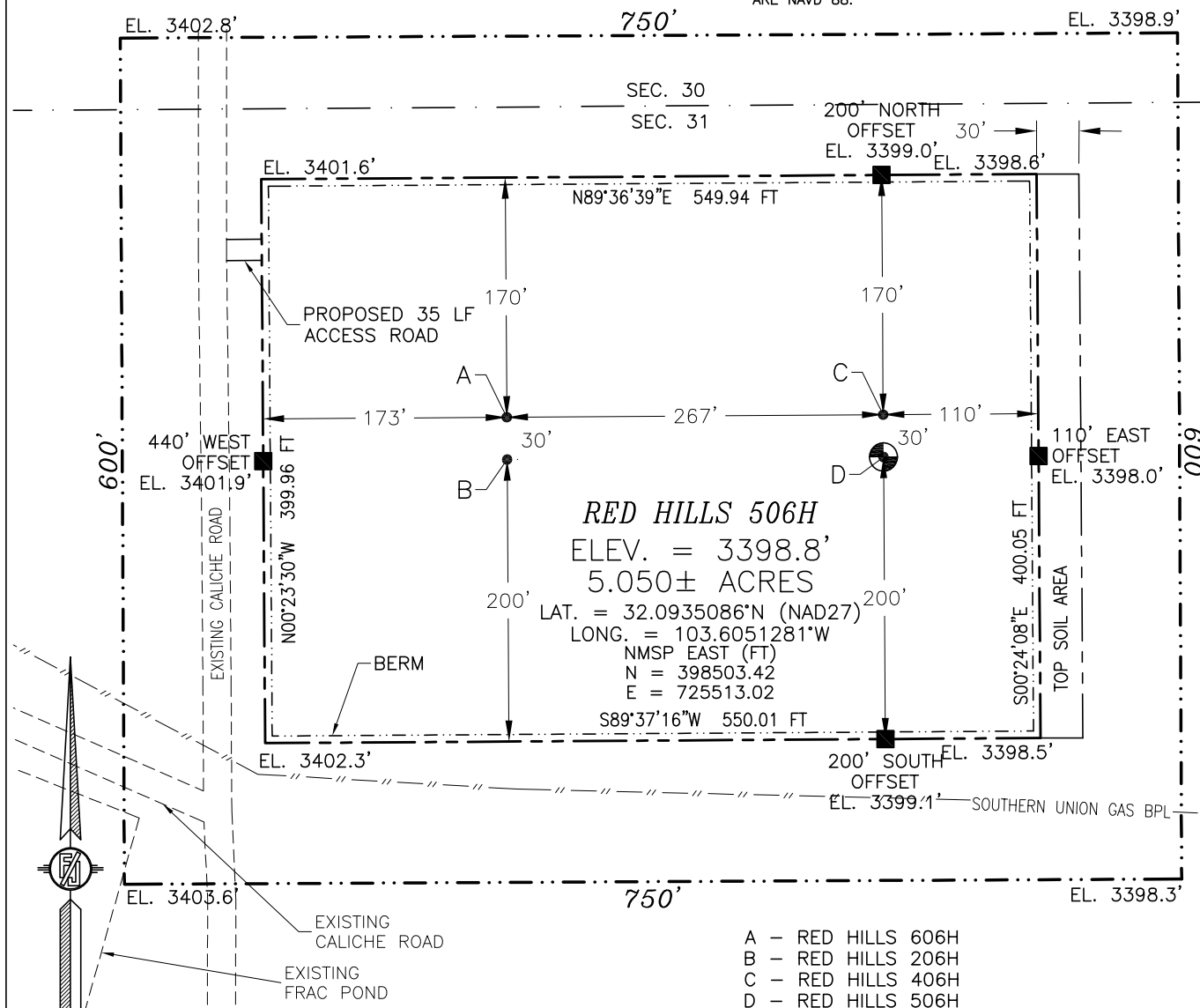
If infill is yes please provide API if available, Operator Name and well number for Defining well for Horizontal Spacing Unit.

API #		
Operator Name:	Property Name:	Well Number

KZ 06/29/2018

SECTION 31, TOWNSHIP 25 SOUTH, RANGE 33 EAST, N.M.P.M.
LEA COUNTY, STATE OF NEW MEXICO
SITE MAP

NOTE: LATITUDE AND LONGITUDE COORDINATES ARE SHOWN USING THE NORTH AMERICAN DATUM OF 1927 (NAD27). LISTED NEW MEXICO STATE PLANE EAST COORDINATES ARE GRID (NAD27). BASIS OF BEARING AND DISTANCES USED ARE NEW MEXICO STATE PLANE EAST (NAD83) COORDINATES MODIFIED TO THE SURFACE. ELEVATION VALUES ARE NAVD 88.



012 60 120 240
SCALE 1" = 120'

DIRECTIONS TO LOCATION

FROM THE INTERSECTION OF STATE HIGHWAY 128 AND CR. 1 GO SOUTH ON CR. 1 FOR APPROX. 8.1 MILES, GO EAST ON CALICHE LEASE ROAD APPROX. 2.8 MILES, CONTINUE SOUTHEAST ON CALICHE LEASE ROAD APPROX. 0.65 OF A MILE, CONTINUE EAST ON CALICHE LEASE ROAD APPROX. 0.5 OF A MILE, CONTINUE NORTH ON CALICHE LEASE ROAD APPROX. 0.35 OF A MILE TO BEGIN ROAD SURVEY, GO EAST APPROX. 35' TO THE NORTHWEST PAD CORNER FOR THIS LOCATION.

I, FILIMON F. JARAMILLO, A NEW MEXICO REGISTERED PROFESSIONAL SURVEYOR CERTIFY THAT I HAVE PREPARED AND AM RESPONSIBLE FOR THIS SURVEY, THAT THIS SURVEY IS TRUE AND CORRECT TO THE BEST OF MY KNOWLEDGE AND BELIEF, AND THAT THIS SURVEY AND PLAT MEET THE MINIMUM STANDARDS FOR SURVEYING IN NEW MEXICO.

FILIMON F. JARAMILLO, REGISTERED PROFESSIONAL SURVEYOR

MADRON SURVEYING, INC.

301 SOUTH CANAL
(575) 234-3341

SURVEY NO. 6448D
CARLSBAD, NEW MEXICO

KAISER-FRANCIS OIL CO.

RED HILLS 506H

LOCATED 250 FT. FROM THE NORTH LINE
AND 850 FT. FROM THE EAST LINE OF
SECTION 31, TOWNSHIP 25 SOUTH,
RANGE 33 EAST, N.M.P.M.
LEA COUNTY, STATE OF NEW MEXICO

JUNE 16, 2020

District I
1625 N. French Dr., Hobbs, NM 88240
Phone: (575) 393-6161 Fax: (575) 393-0720
District II
811 S. First St., Artesia, NM 88210
Phone: (575) 748-1283 Fax: (575) 748-9720
District III
1000 Rio Brazos Road, Aztec, NM 87410
Phone: (505) 334-6178 Fax: (505) 334-6170
District IV
1220 S. St. Francis Dr., Santa Fe, NM 87505
Phone: (505) 476-3460 Fax: (505) 476-3462

State of New Mexico
Energy, Minerals & Natural Resources Department
OIL CONSERVATION DIVISION
1220 South St. Francis Dr.
Santa Fe, NM 87505

Form C-102
Revised August 1, 2011
Submit one copy to appropriate
District Office

☐ AMENDED REPORT

WELL LOCATION AND ACREAGE DEDICATION PLAT

¹ API Number 30-025-47189	² Pool Code	³ Pool Name Wolfcamp
⁴ Property Code	⁵ Property Name RED HILLS	⁶ Well Number 506H
⁷ OGRID No. 12361	⁸ Operator Name KAISER-FRANCIS OIL CO.	⁹ Elevation 3398.8

¹⁰ Surface Location

UL or lot no.	Section	Township	Range	Lot Idn	Feet from the	North/South line	Feet from the	East/West line	County
A	31	25 S	33 E		250	NORTH	850	EAST	LEA

¹¹ Bottom Hole Location If Different From Surface

UL or lot no.	Section	Township	Range	Lot Idn	Feet from the	North/South line	Feet from the	East/West line	County
P	6	26 S	33 E		100	SOUTH	850	EAST	LEA

¹² Dedicated Acres	¹³ Joint or Infill	¹⁴ Consolidation Code	¹⁵ Order No.
-------------------------------	-------------------------------	----------------------------------	-------------------------

No allowable will be assigned to this completion until all interests have been consolidated or a non-standard unit has been approved by the division.

<p>NW CORNER SEC. 31 LAT. = 32.0943129°N LONG. = 103.6199197°W NMSP EAST (FT) N = 398778.60 E = 762263.04</p> <p>W/4 CORNER SEC. 31 LAT. = 32.0870551°N LONG. = 103.6199216°W NMSP EAST (FT) N = 396138.31 E = 762279.92</p> <p>SW CORNER SEC. 31 LAT. = 32.0797982°N LONG. = 103.6198947°W NMSP EAST (FT) N = 393498.44 E = 762305.72</p> <p>W/4 CORNER SEC. 6 LAT. = 32.0724791°N LONG. = 103.6198675°W NMSP EAST (FT) N = 390835.89 E = 762331.74</p> <p>SW CORNER SEC. 6 LAT. = 32.0652928°N LONG. = 103.6198397°W NMSP EAST (FT) N = 388221.69 E = 762357.64</p>	<p>N89°33'55"E 2650.63 FT N89°36'15"E 2635.02 FT</p> <p>N/4 CORNER SEC. 31 LAT. = 32.0943196°N LONG. = 103.6113623°W NMSP EAST (FT) N = 398798.70 E = 764913.09</p> <p>FIRST TAKE POINT 100' FNL, 850' FEL LAT. = 32.0940457°N LONG. = 103.6055994°W NMSP EAST (FT) N = 398711.06 E = 766698.42</p> <p>S/4 CORNER SEC. 31 LAT. = 32.0797943°N LONG. = 103.6113923°W NMSP EAST (FT) N = 393514.54 E = 764939.16</p> <p>NOTE: LATITUDE AND LONGITUDE COORDINATES ARE SHOWN USING THE NORTH AMERICAN DATUM OF 1983 (NAD83) LISTED NEW MEXICO STATE PLANE EAST COORDINATES ARE GRID (NAD83). BASIS OF BEARING AND DISTANCES USED ARE NEW MEXICO STATE PLANE EAST COORDINATES MODIFIED TO THE SURFACE. VERTICAL DATUM NAVD88.</p> <p>BOTTOM OF HOLE LAT. = 32.0655724°N LONG. = 103.6055931°W NMSP EAST (FT) N = 388352.88 E = 766770.24</p> <p>S89°38'59"W 2633.99 FT S89°36'23"W 2643.42 FT</p> <p>S89°35'41"W 2632.14 FT S89°35'41"W 2632.14 FT</p>	<p>NE CORNER SEC. 31 LAT. = 32.0943209°N LONG. = 103.6028553°W NMSP EAST (FT) N = 398816.91 E = 767547.55</p> <p>E/4 CORNER SEC. 31 LAT. = 32.0870695°N LONG. = 103.6028547°W NMSP EAST (FT) N = 396178.96 E = 767565.60</p> <p>SE CORNER SEC. 31 LAT. = 32.0797953°N LONG. = 103.6028596°W NMSP EAST (FT) N = 393532.70 E = 767582.02</p> <p>E/4 CORNER SEC. 6 LAT. = 32.0725247°N LONG. = 103.6028542°W NMSP EAST (FT) N = 390887.75 E = 767601.57</p> <p>SE CORNER SEC. 6 LAT. = 32.0652983°N LONG. = 103.6028496°W NMSP EAST (FT) N = 388258.92 E = 767620.79</p>	<p>¹⁷ OPERATOR CERTIFICATION</p> <p>I hereby certify that the information contained herein is true and complete to the best of my knowledge and belief, and that this organization either owns a working interest or unleased mineral interest in the land including the proposed bottom hole location or has a right to drill this well at this location pursuant to a contract with an owner of such a mineral or working interest, or to a voluntary pooling agreement or a compulsory pooling order heretofore entered by the division.</p> <p>Eric Hansen 6/18/20 Signature Date</p> <p>Eric Hansen Printed Name</p> <p>EricH@kfoc.net E-mail Address</p> <p>¹⁸ SURVEYOR CERTIFICATION</p> <p>I hereby certify that the well location shown on this plat was plotted from field notes of actual surveys made by me or under my supervision, and that the same is true and correct to the best of my belief.</p> <p>JUNE 16, 2020 Date of Survey</p> <p>WILLIAM F. JARAMILA Signature and Seal of Professional Surveyor</p> <p>Certificate Number: FILED ON BEARHAM CO. PLS 12797 SURVEY NO. 6448E</p>
---	---	---	--

Intent ☐ As Drilled ☐

API #		
Operator Name: KAISER-FRANCIS OIL CO.	Property Name: RED HILLS	Well Number 506H

Kick Off Point (KOP)

UL A	Section 31	Township 25S	Range 33E	Lot	Feet 250	From N/S NORTH	Feet 850	From E/W EAST	County LEA
Latitude 32.0936334					Longitude 103.6055994			NAD 83	

First Take Point (FTP)

UL A	Section 31	Township 25S	Range 33E	Lot	Feet 100	From N/S NORTH	Feet 850	From E/W EAST	County LEA
Latitude 32.0940457					Longitude 103.6055994			NAD 83	

Last Take Point (LTP)

UL P	Section 6	Township 26S	Range 33E	Lot	Feet 100	From N/S SOUTH	Feet 850	From E/W EAST	County LEA
Latitude 32.0655724					Longitude 103.6055931			NAD 83	

Is this well the defining well for the Horizontal Spacing Unit? ☐Is this well an infill well? ☐

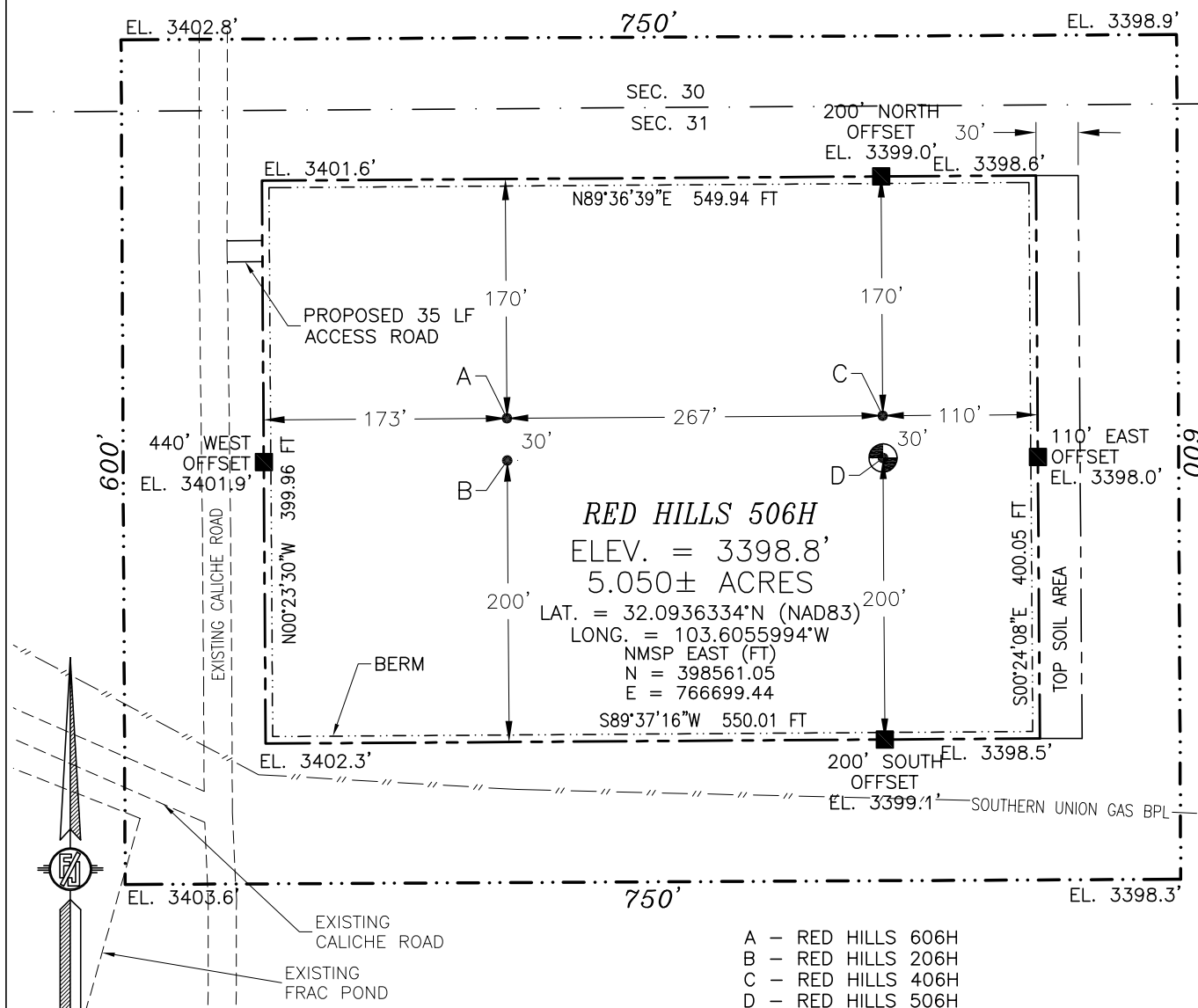
If infill is yes please provide API if available, Operator Name and well number for Defining well for Horizontal Spacing Unit.

API #		
Operator Name:	Property Name:	Well Number

KZ 06/29/2018

SECTION 31, TOWNSHIP 25 SOUTH, RANGE 33 EAST, N.M.P.M.
LEA COUNTY, STATE OF NEW MEXICO
SITE MAP

NOTE: LATITUDE AND LONGITUDE COORDINATES ARE SHOWN USING THE NORTH AMERICAN DATUM OF 1983 (NAD83) LISTED NEW MEXICO STATE PLANE EAST COORDINATES ARE GRID (NAD83). BASIS OF BEARING AND DISTANCES USED ARE NEW MEXICO STATE PLANE EAST COORDINATES MODIFIED TO THE SURFACE. ELEVATION VALUES ARE NAVD88.



012 60 120 240

SCALE 1" = 120'

DIRECTIONS TO LOCATION

FROM THE INTERSECTION OF STATE HIGHWAY 128 AND CR. 1 GO SOUTH ON CR. 1 FOR APPROX. 8.1 MILES, GO EAST ON CALICHE LEASE ROAD APPROX. 2.8 MILES, CONTINUE SOUTHEAST ON CALICHE LEASE ROAD APPROX. 0.65 OF A MILE, CONTINUE EAST ON CALICHE LEASE ROAD APPROX. 0.5 OF A MILE, CONTINUE NORTH ON CALICHE LEASE ROAD APPROX. 0.35 OF A MILE TO BEGIN ROAD SURVEY, GO EAST APPROX. 35' TO THE NORTHWEST PAD CORNER FOR THIS LOCATION.

I, FILIMON F. JARAMILLO, A NEW MEXICO REGISTERED PROFESSIONAL SURVEYOR CERTIFY THAT I CONDUCTED AND AM RESPONSIBLE FOR THIS SURVEY, THAT THIS SURVEY IS TRUE AND CORRECT TO THE BEST OF MY KNOWLEDGE AND BELIEF, AND THAT THIS SURVEY AND PLAT MEET THE MINIMUM STANDARDS FOR SURVEYING IN NEW MEXICO.

FILIMON F. JARAMILLO, LICENSE NO. 12792

MADRON SURVEYING, INC.

301 SOUTH CANAL
(575) 234-3341

CARLSBAD, NEW MEXICO

KAISER-FRANCIS OIL CO.

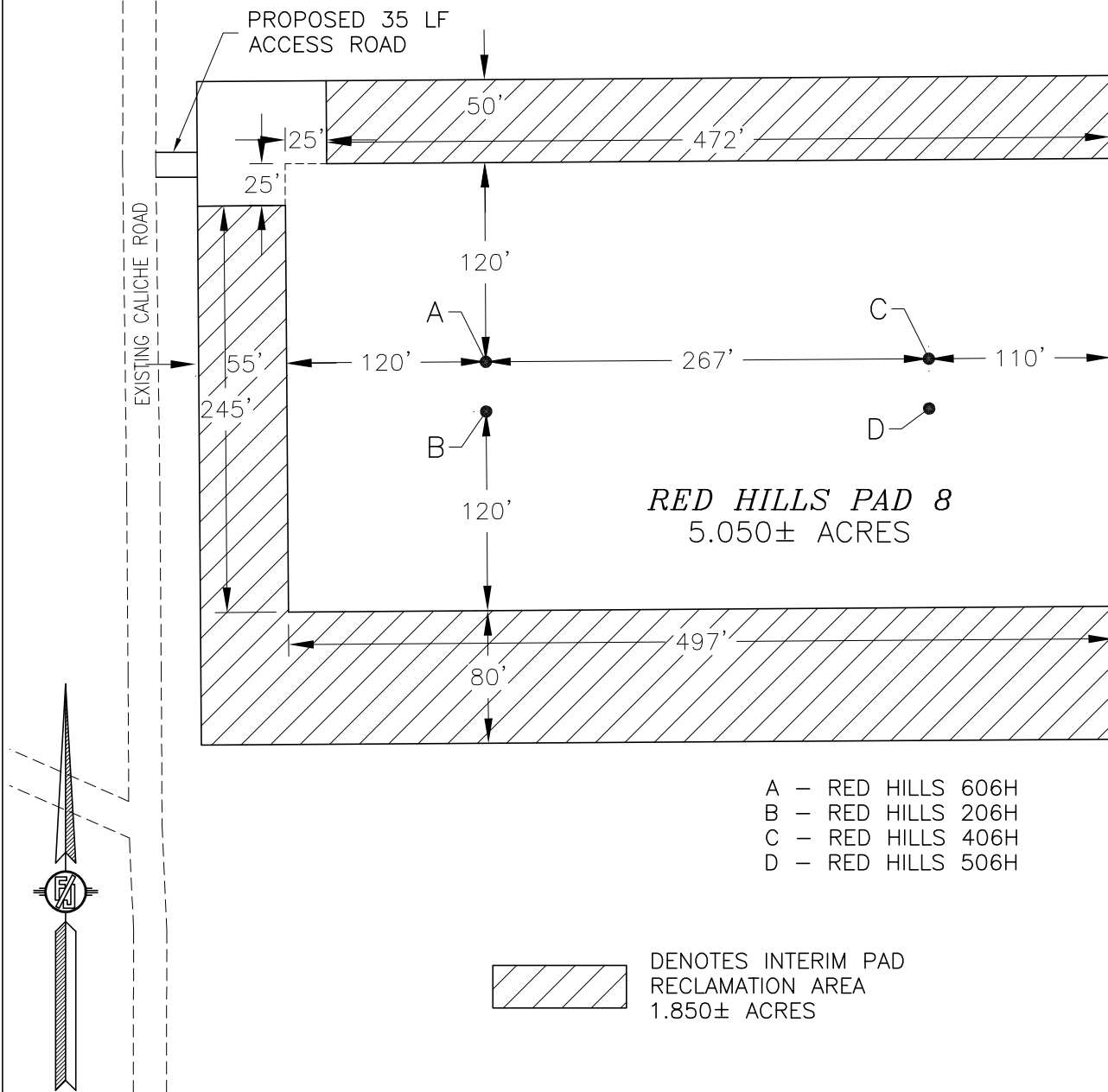
RED HILLS 506H

LOCATED 250 FT. FROM THE NORTH LINE
AND 850 FT. FROM THE EAST LINE OF
SECTION 31, TOWNSHIP 25 SOUTH,
RANGE 33 EAST, N.M.P.M.
LEA COUNTY, STATE OF NEW MEXICO

JUNE 16, 2020

SURVEY NO. 6448D

SECTION 31, TOWNSHIP 25 SOUTH, RANGE 33 EAST, N.M.P.M.
LEA COUNTY, STATE OF NEW MEXICO
INTERIM SITE BUILD PLAN



- A - RED HILLS 606H
- B - RED HILLS 206H
- C - RED HILLS 406H
- D - RED HILLS 506H



DENOTES INTERIM PAD
RECLAMATION AREA
1.850± ACRES

0 10 50 100 200
SCALE 1" = 100'

KAISER-FRANCIS OIL CO.
RED HILLS 506H
LOCATED 250 FT. FROM THE NORTH LINE
AND 850 FT. FROM THE EAST LINE OF
SECTION 31, TOWNSHIP 25 SOUTH,
RANGE 33 EAST, N.M.P.M.
LEA COUNTY, STATE OF NEW MEXICO

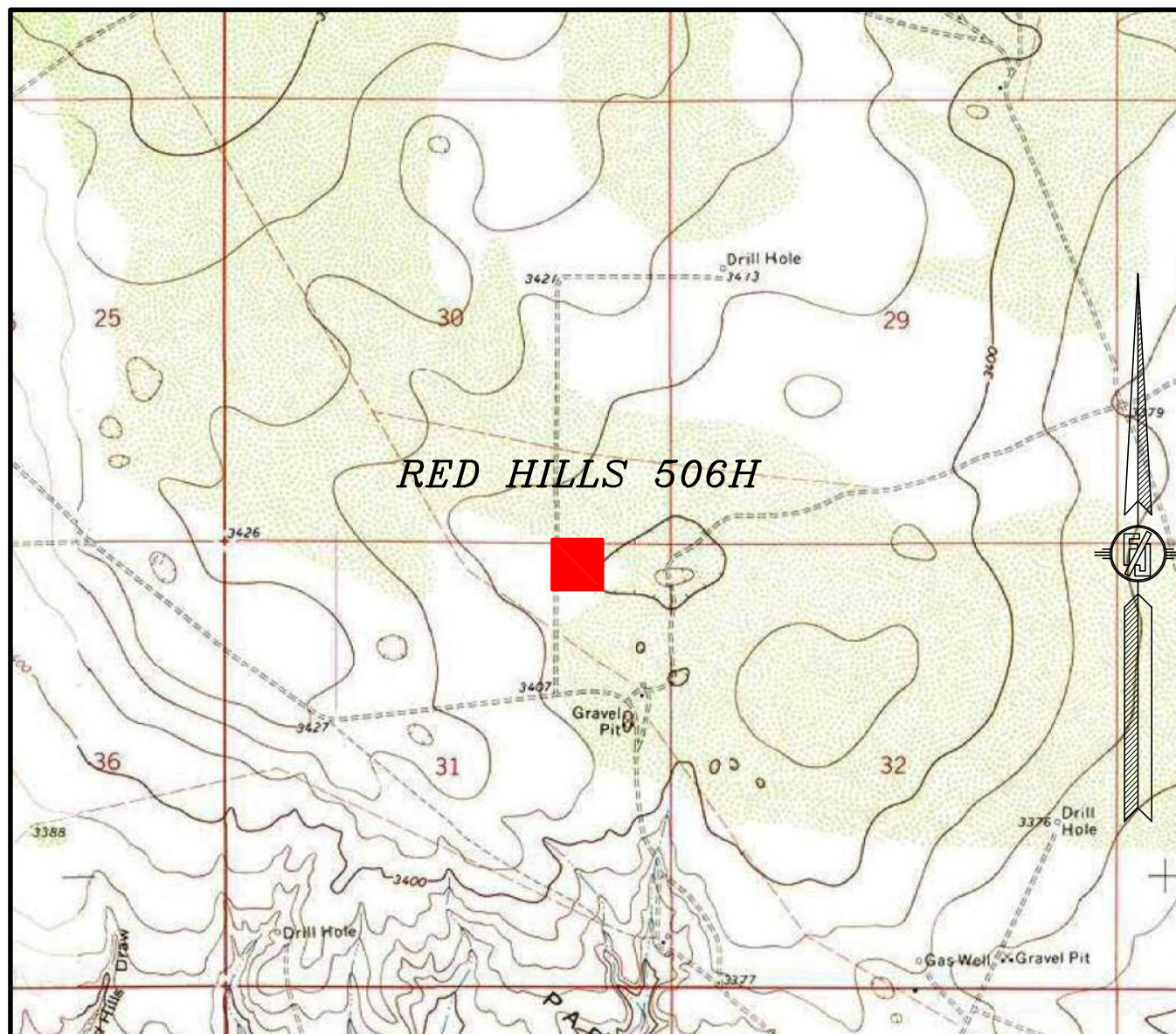
JUNE 16, 2020

SURVEY NO. 6448D

MADRON SURVEYING, INC. 301 SOUTH CANAL
(575) 234-3341

CARLSBAD, NEW MEXICO

SECTION 31, TOWNSHIP 25 SOUTH, RANGE 33 EAST, N.M.P.M.
LEA COUNTY, STATE OF NEW MEXICO
LOCATION VERIFICATION MAP



USGS QUAD MAP:
PADUCA BREAKS EAST

NOT TO SCALE

KAISER-FRANCIS OIL CO.
RED HILLS 506H
LOCATED 250 FT. FROM THE NORTH LINE
AND 850 FT. FROM THE EAST LINE OF
SECTION 31, TOWNSHIP 25 SOUTH,
RANGE 33 EAST, N.M.P.M.
LEA COUNTY, STATE OF NEW MEXICO

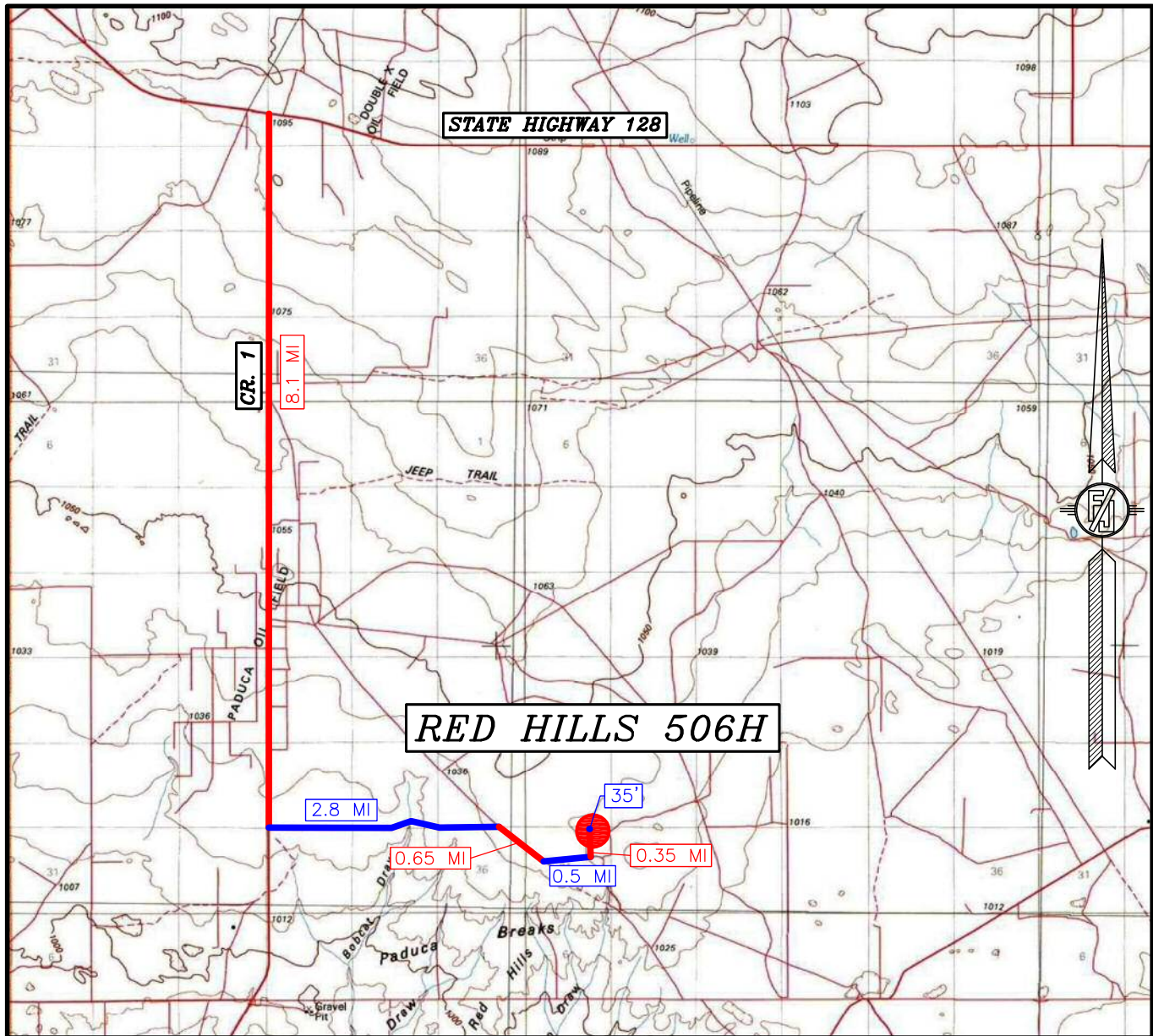
JUNE 16, 2020

MADRON SURVEYING, INC.

301 SOUTH CANAL
(575) 234-3341

SURVEY NO. 6448D
CARLSBAD, NEW MEXICO

SECTION 31, TOWNSHIP 25 SOUTH, RANGE 33 EAST, N.M.P.M.
LEA COUNTY, STATE OF NEW MEXICO
VICINITY MAP



DISTANCES IN MILES

NOT TO SCALE

KAISER-FRANCIS OIL CO.
RED HILLS 506H

LOCATED 250 FT. FROM THE NORTH LINE
AND 850 FT. FROM THE EAST LINE OF
SECTION 31, TOWNSHIP 25 SOUTH,
RANGE 33 EAST, N.M.P.M.
LEA COUNTY, STATE OF NEW MEXICO

DIRECTIONS TO LOCATION

FROM THE INTERSECTION OF STATE HIGHWAY 128 AND CR. 1 GO SOUTH ON CR. 1 FOR APPROX. 8.1 MILES, GO EAST ON CALICHE LEASE ROAD APPROX. 2.8 MILES, CONTINUE SOUTHEAST ON CALICHE LEASE ROAD APPROX. 0.65 OF A MILE, CONTINUE EAST ON CALICHE LEASE ROAD APPROX. 0.5 OF A MILE, CONTINUE NORTH ON CALICHE LEASE ROAD APPROX. 0.35 OF A MILE TO BEGIN ROAD SURVEY, GO EAST APPROX. 35' TO THE NORTHWEST PAD CORNER FOR THIS LOCATION.

JUNE 16, 2020

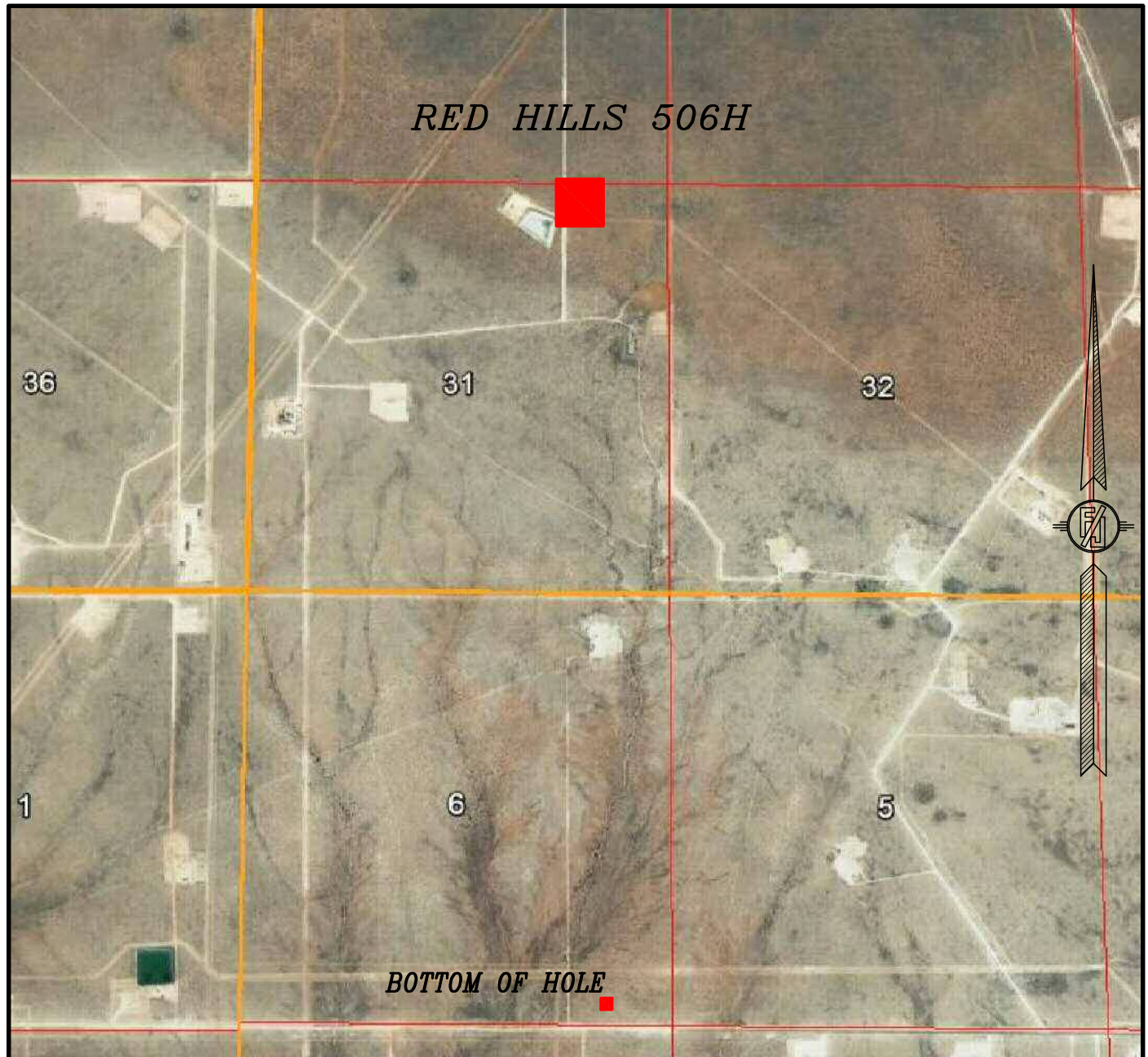
SURVEY NO. 6448D

MADRON SURVEYING, INC. 301 SOUTH CANAL

(575) 234-3341

CARLSBAD, NEW MEXICO

SECTION 31, TOWNSHIP 25 SOUTH, RANGE 33 EAST, N.M.P.M.
LEA COUNTY, STATE OF NEW MEXICO
AERIAL PHOTO



NOT TO SCALE
AERIAL PHOTO:
GOOGLE EARTH
FEBRUARY 2019

KAISER-FRANCIS OIL CO.
RED HILLS 506H
LOCATED 250 FT. FROM THE NORTH LINE
AND 850 FT. FROM THE EAST LINE OF
SECTION 31, TOWNSHIP 25 SOUTH,
RANGE 33 EAST, N.M.P.M.
LEA COUNTY, STATE OF NEW MEXICO

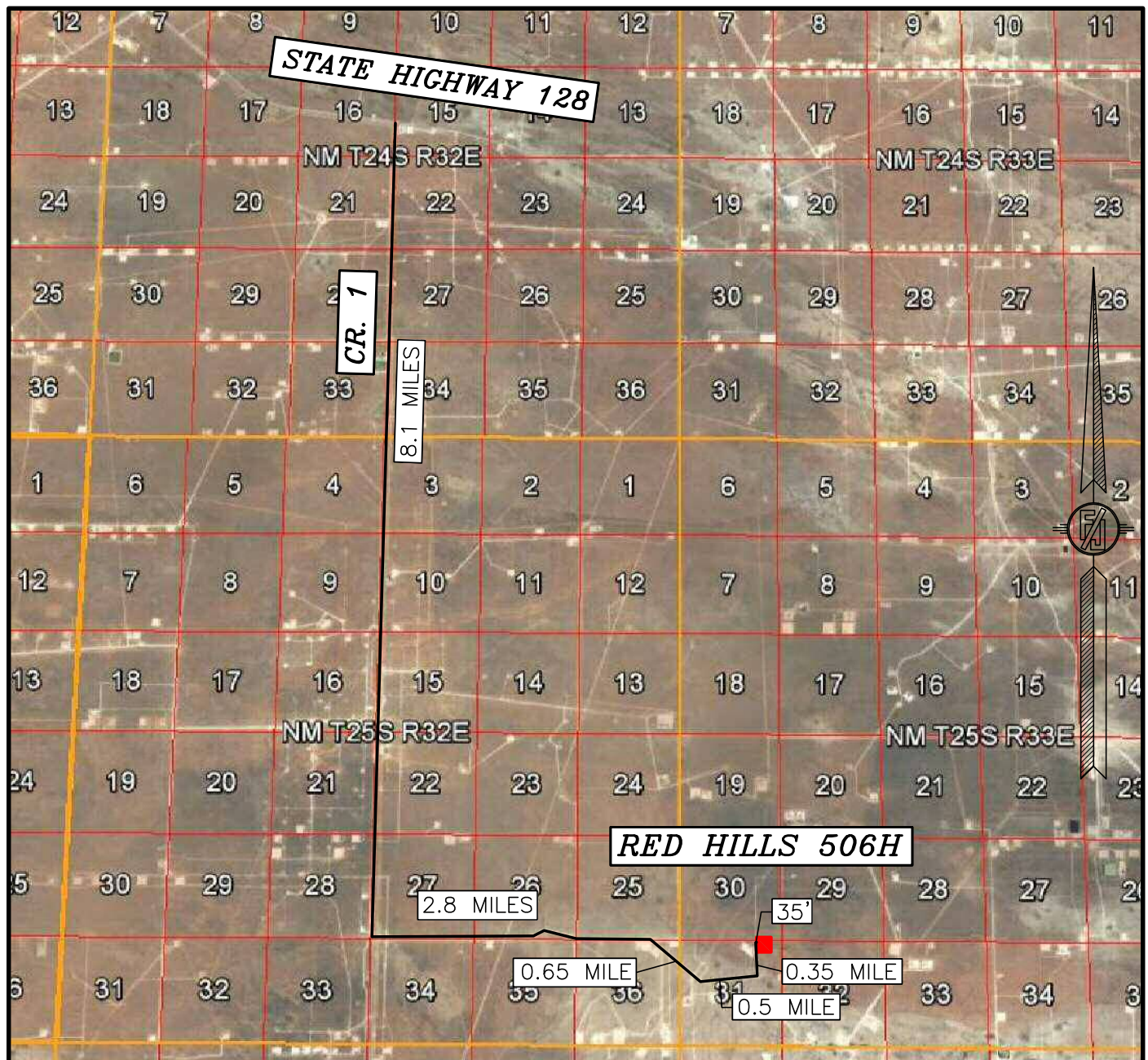
JUNE 16, 2020

MADRON SURVEYING, INC.

301 SOUTH CANAL
(575) 234-3341

SURVEY NO. 6448D
CARLSBAD, NEW MEXICO

SECTION 31, TOWNSHIP 25 SOUTH, RANGE 33 EAST, N.M.P.M.
LEA COUNTY, STATE OF NEW MEXICO
ACCESS AERIAL ROUTE MAP



NOT TO SCALE
AERIAL PHOTO:
GOOGLE EARTH
FEBRUARY 2019

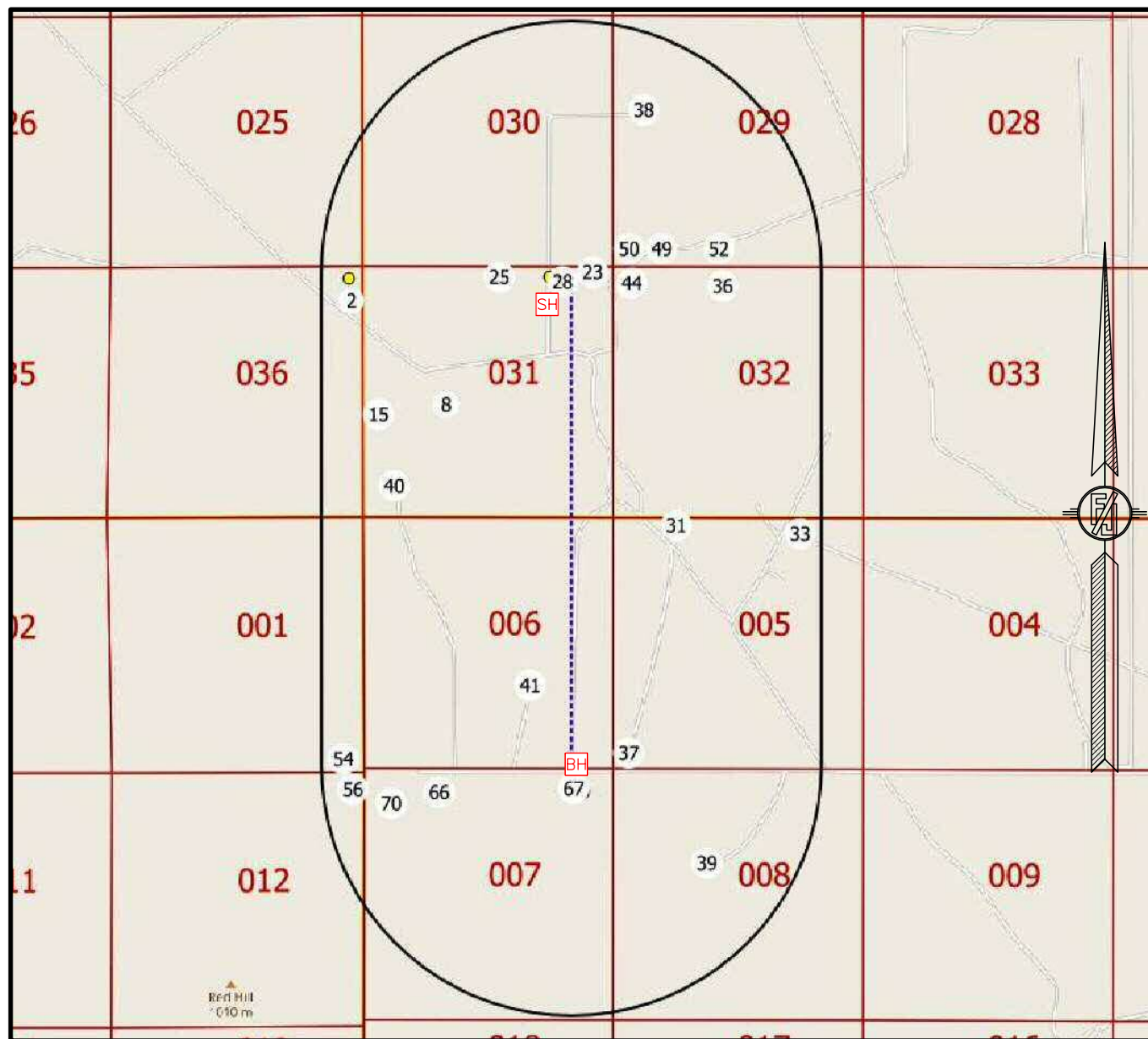
KAISER-FRANCIS OIL CO.
RED HILLS 506H
LOCATED 250 FT. FROM THE NORTH LINE
AND 850 FT. FROM THE EAST LINE OF
SECTION 31, TOWNSHIP 25 SOUTH,
RANGE 33 EAST, N.M.P.M.
LEA COUNTY, STATE OF NEW MEXICO

JUNE 16, 2020

SURVEY NO. 6448D

MADRON SURVEYING, INC. 301 SOUTH CANAL CARLSBAD, NEW MEXICO
(575) 234-3341

1-MILE MAP



NOT TO SCALE

- [SH] SURFACE LOCATION
 [BH] BOTTOM OF HOLE
 (XX) WELLS WITHIN 1 MILE
 - - - - - WELL PATH
 _____ 1-MILE BOUNDARY

KAISER-FRANCIS OIL CO.
RED HILLS 506H
 LOCATED 250 FT. FROM THE NORTH LINE
 AND 850 FT. FROM THE EAST LINE OF
 SECTION 31, TOWNSHIP 25 SOUTH,
 RANGE 33 EAST, N.M.P.M.
 LEA COUNTY, STATE OF NEW MEXICO

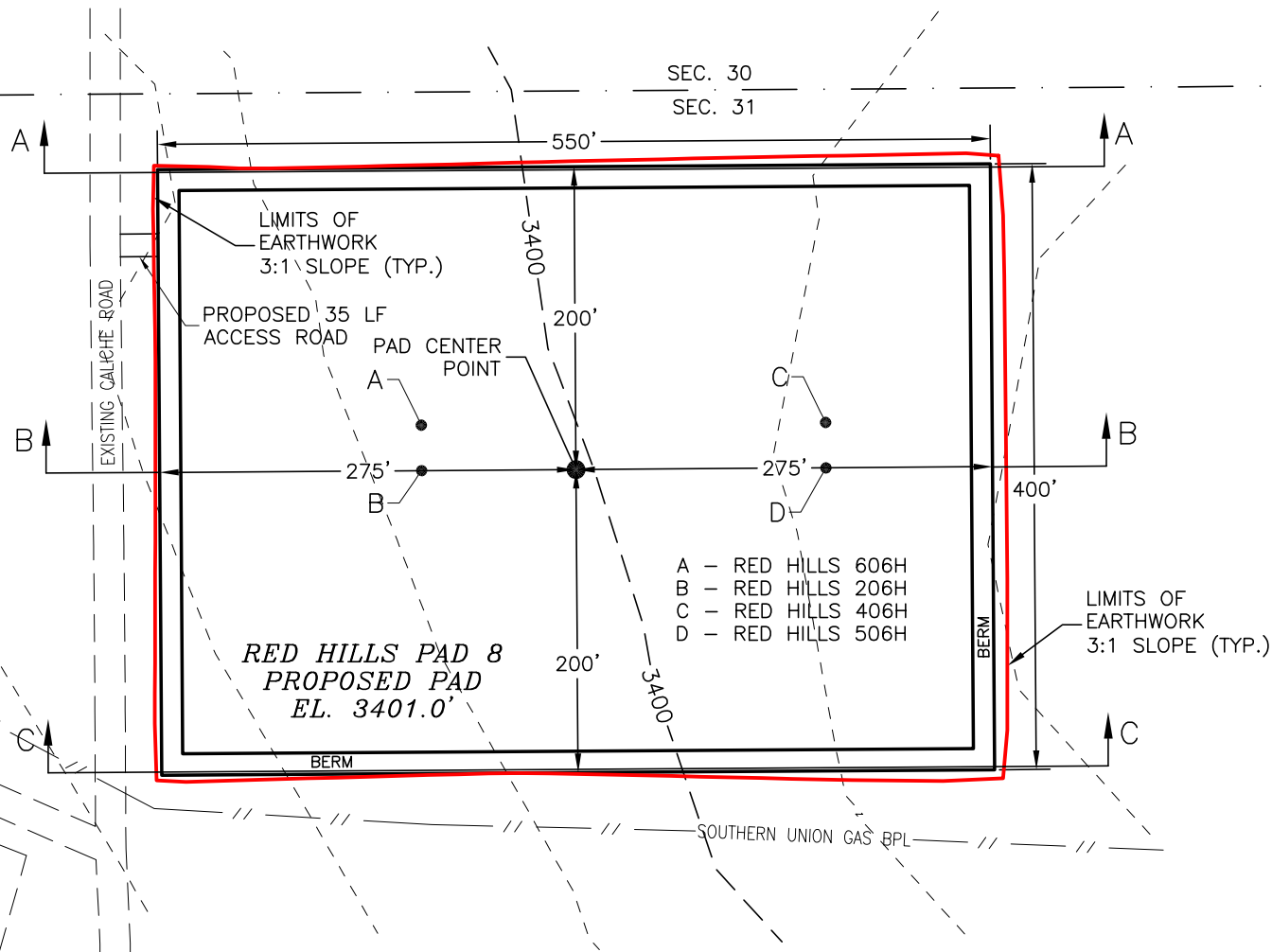
JUNE 16, 2020

SURVEY NO. 6448D

MADRON SURVEYING, INC. 301 SOUTH CANAL (575) 234-3341

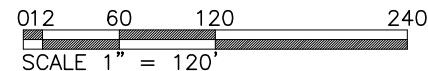
CARLSBAD, NEW MEXICO

PLAN VIEW



I, FILIMON F. JARAMILLO, A NEW MEXICO REGISTERED PROFESSIONAL SURVEYOR CERTIFY THAT I DIRECTED AND AM RESPONSIBLE FOR THIS SURVEY, THAT THIS SURVEY IS TRUE AND CORRECT TO THE BEST OF MY KNOWLEDGE AND BELIEF, AND THE SURVEY AND PLAT MEET THE MINIMUM STANDARDS FOR SURVEYING IN NEW MEXICO.

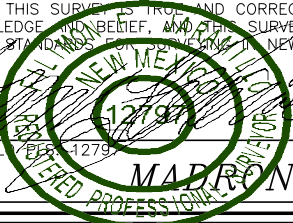
KAISER-FRANCIS OIL CO.
GRADING PLAN AND CROSS SECTIONS
FOR RED HILLS 506H
SECTION 31, TOWNSHIP 25 SOUTH,
RANGE 33 EAST, N.M.P.M.
LEA COUNTY, STATE OF NEW MEXICO



CUT	FILL	NET
1025 CU. YD	9286 CU. YD	8261 CU. YD (FILL)

EARTHWORK QUANTITIES ARE ESTIMATED

FILIMON F. JARAMILLO 12797

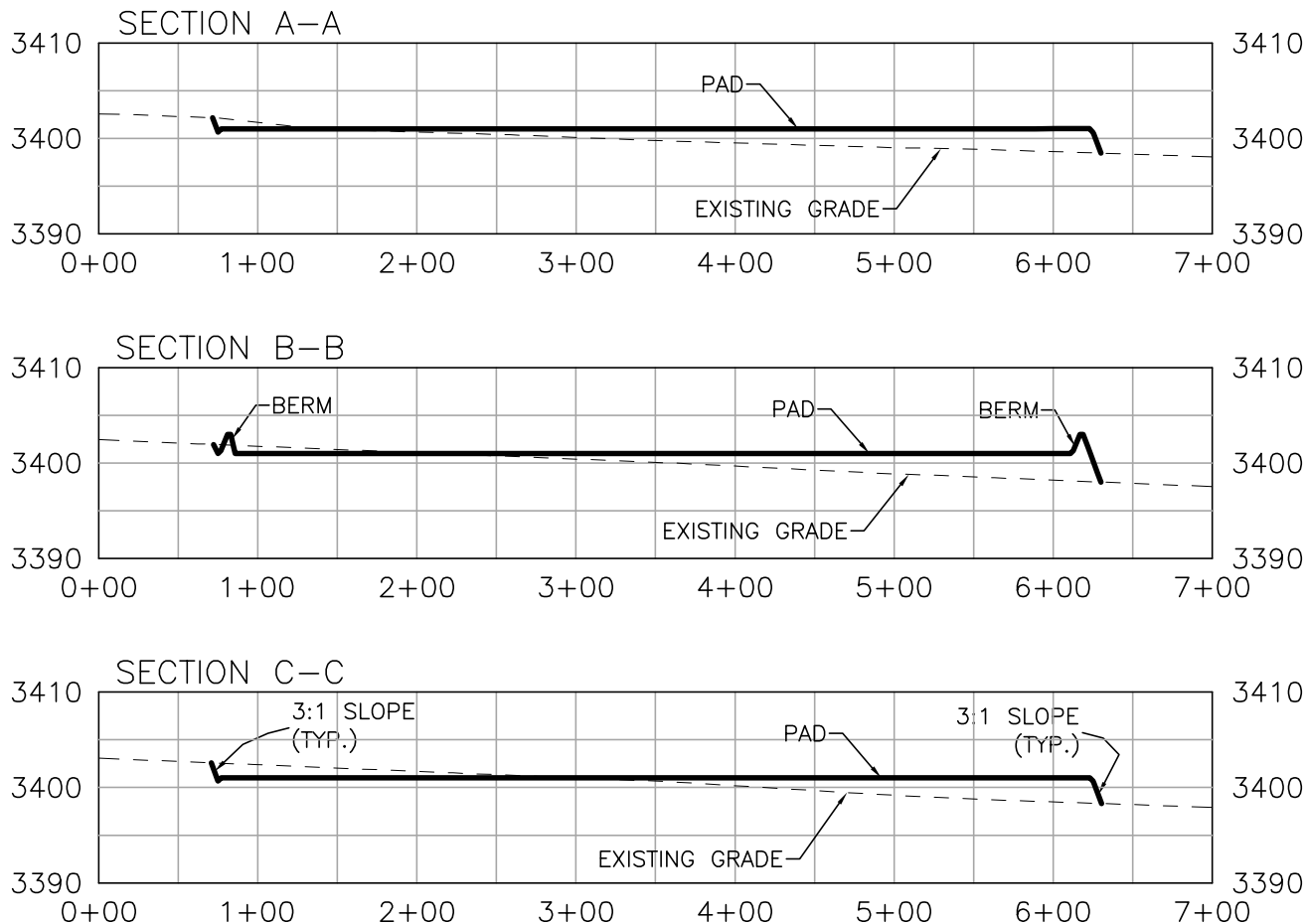


MADRON SURVEYING, INC. 301 SOUTH CANAL (575) 234-3341 CARLSBAD, NEW MEXICO

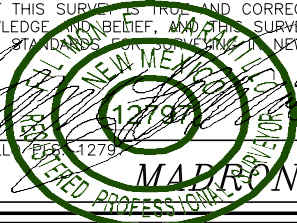
SHEET 1-2
SURVEY NO. 6448D

JUNE 16, 2020

CROSS SECTIONS



I, FILIMON F. JARAMILLO, A NEW MEXICO REGISTERED PROFESSIONAL SURVEYOR CERTIFY THAT I DIRECTED AND AM RESPONSIBLE FOR THIS SURVEY, THAT THIS SURVEY IS TRUE AND CORRECT TO THE BEST OF MY KNOWLEDGE AND BELIEF, AND THAT THE SURVEY AND PLAT MEET THE MINIMUM STANDARDS FOR SURVEYING IN NEW MEXICO.



KAISER-FRANCIS OIL CO.
GRADING PLAN AND CROSS SECTIONS
FOR RED HILLS 506H
 SECTION 31, TOWNSHIP 25 SOUTH,
 RANGE 33 EAST, N.M.P.M.
 LEA COUNTY, STATE OF NEW MEXICO

JUNE 16, 2020

301 SOUTH CANAL
 (575) 234-3341

MADRON SURVEYING, INC. CARLSBAD, NEW MEXICO

012 60 120 240
 SCALE 1" = 120' - 1" = 20' VER

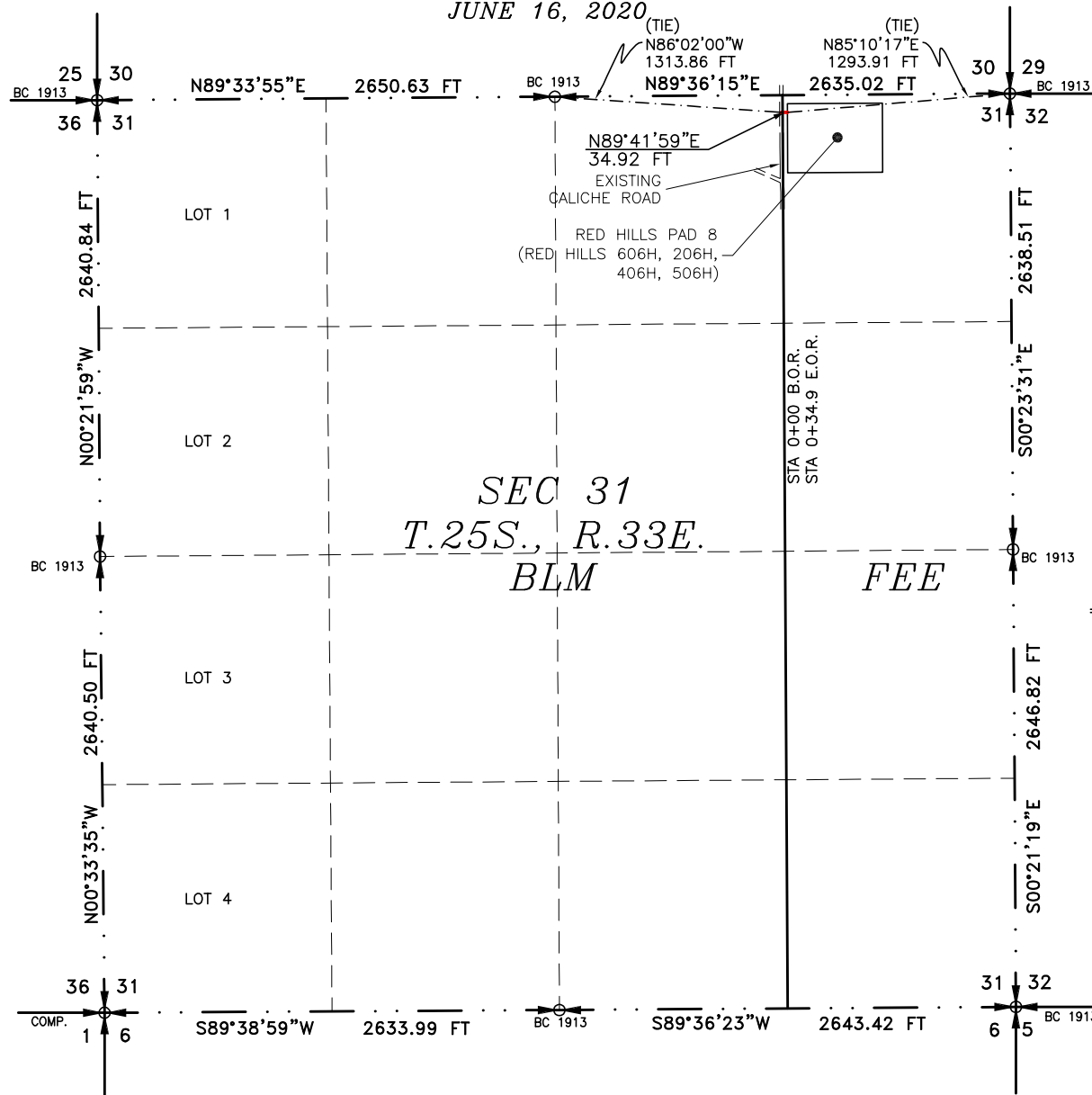
CUT	FILL	NET
1025 CU. YD	9286 CU. YD	8261 CU. YD (FILL)

EARTHWORK QUANTITIES ARE ESTIMATED

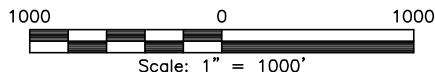
SHEET 2-2
 SURVEY NO. 6448D

ACCESS ROAD PLAT
ACCESS ROAD TO THE RED HILLS PAD 8
(RED HILLS 606H, 206H, 406H, 506H)

KAISER-FRANCIS OIL CO.
CENTERLINE SURVEY OF AN ACCESS ROAD CROSSING
SECTION 31, TOWNSHIP 25 SOUTH, RANGE 33 EAST, N.M.P.M.
LEA COUNTY, STATE OF NEW MEXICO
JUNE 16, 2020



SEE NEXT SHEET (2-2) FOR DESCRIPTION



GENERAL NOTES

- 1.) THE INTENT OF THIS ROUTE SURVEY IS TO ACQUIRE AN EASEMENT.
- 2.) BASIS OF BEARING AND DISTANCE IS NMSP EAST (NAD83) MODIFIED TO SURFACE COORDINATES. NAD 83 (FEET) AND NAVD 88 (FEET) COORDINATE SYSTEMS USED IN THE SURVEY.

SHEET: 1-2

MADRON SURVEYING, INC.

SURVEYOR CERTIFICATE

I, FILIMON F. JARAMILLO, A NEW MEXICO PROFESSIONAL SURVEYOR NO. 12797, HEREBY CERTIFY THAT I HAVE CONDUCTED AND AM RESPONSIBLE FOR THIS SURVEY, THAT THIS SURVEY IS TRUE AND CORRECT TO THE BEST OF MY KNOWLEDGE AND BELIEF, AND THAT THIS SURVEY AND PLAT MEET THE MINIMUM STANDARDS FOR LAND SURVEYING IN THE STATE OF NEW MEXICO.

IN WITNESS WHEREOF, THIS CERTIFICATE IS EXECUTED AT CARLSBAD, NEW MEXICO, THIS 16 DAY OF JUNE 2020

FILIMON F. JARAMILLO PLS. 12797

MADRON SURVEYING, INC.
301 SOUTH CANAL
CARLSBAD, NEW MEXICO 88220
Phone (575) 234-3341

SURVEY NO. 6448D

301 SOUTH CANAL
(575) 234-3341

CARLSBAD, NEW MEXICO

ACCESS ROAD PLAT
ACCESS ROAD TO THE RED HILLS PAD 8
(RED HILLS 606H, 206H, 406H, 506H)

KAISER-FRANCIS OIL CO.
CENTERLINE SURVEY OF AN ACCESS ROAD CROSSING
SECTION 31, TOWNSHIP 25 SOUTH, RANGE 33 EAST, N.M.P.M.
LEA COUNTY, STATE OF NEW MEXICO
JUNE 16, 2020

DESCRIPTION

A STRIP OF LAND 30 FEET WIDE CROSSING BUREAU OF LAND MANAGEMENT AND FEE LAND IN SECTION 31, TOWNSHIP 25 SOUTH, RANGE 33 EAST, N.M.P.M., LEA COUNTY, STATE OF NEW MEXICO AND BEING 15 FEET EACH SIDE OF THE FOLLOWING DESCRIBED CENTERLINE SURVEY:

BEGINNING AT A POINT WITHIN THE NW/4 NE/4 OF SAID SECTION 31, TOWNSHIP 25 SOUTH, RANGE 33 EAST, N.M.P.M., WHENCE THE NORTH QUARTER CORNER OF SAID SECTION 31, TOWNSHIP 25 SOUTH, RANGE 33 EAST, N.M.P.M. BEARS N86°02'00"W, A DISTANCE OF 1313.86 FEET;
 THENCE N89°41'59"E A DISTANCE OF 34.92 FEET THE TERMINUS OF THIS CENTERLINE SURVEY, WHENCE THE NORTHEAST CORNER OF SAID SECTION 31, TOWNSHIP 25 SOUTH, RANGE 33 EAST, N.M.P.M. BEARS N85°10'17"E, A DISTANCE OF 1293.91 FEET;

SAID STRIP OF LAND BEING 34.92 FEET OR 2.11 RODS IN LENGTH, CONTAINING 0.024 ACRES MORE OR LESS AND BEING ALLOCATED BY FORTIES AS FOLLOWS:

NW/4 NE/4	7.34 L.F.	0.44 RODS	0.005 ACRES	BLM
NE/4 NE/4	27.58 L.F.	1.67 RODS	0.019 ACRES	FEE

GENERAL NOTES

1.) THE INTENT OF THIS ROUTE SURVEY IS TO ACQUIRE AN EASEMENT.

2.) BASIS OF BEARING AND DISTANCE IS NMSP EAST (NAD83) MODIFIED TO SURFACE COORDINATES. NAD 83 (FEET) AND NAVD 88 (FEET) COORDINATE SYSTEMS USED IN THE SURVEY.

SHEET: 2-2

MADRON SURVEYING, INC.

SURVEYOR CERTIFICATE

I, FILIMON F. JARAMILLO, A NEW MEXICO PROFESSIONAL SURVEYOR NO. 12797, HEREBY CERTIFY THAT I HAVE CONDUCTED AND AM RESPONSIBLE FOR THIS SURVEY, THAT THIS SURVEY IS TRUE AND CORRECT TO THE BEST OF MY KNOWLEDGE AND BELIEF, AND THAT THIS SURVEY AND PLAT MEET THE MINIMUM STANDARDS FOR LAND SURVEYING IN THE STATE OF NEW MEXICO.

IN WITNESS WHEREOF, THIS CERTIFICATE IS EXECUTED AT CARLSBAD, NEW MEXICO, THIS 18 DAY OF JUNE 2020

FILIMON F. JARAMILLO
 FILIMON F. JARAMILLO PLS. 12797

MADRON SURVEYING, INC.
 301 SOUTH CANAL
 CARLSBAD, NEW MEXICO 88220
 Phone (575) 234-3341

SURVEY NO. 6448D

301 SOUTH CANAL
 (575) 234-3341

CARLSBAD, NEW MEXICO

Sante Fe Main Office
Phone: (505) 476-3441

General Information
Phone: (505) 629-6116

Online Phone Directory
<https://www.emnrd.nm.gov/ocd/contact-us>

State of New Mexico
Energy, Minerals and Natural Resources
Oil Conservation Division
1220 S. St Francis Dr.
Santa Fe, NM 87505

CONDITIONS

Action 389114

CONDITIONS

Operator: KAISER-FRANCIS OIL CO PO Box 21468 Tulsa, OK 741211468	OGRID: 12361
	Action Number: 389114
	Action Type: [C-103] NOI Change of Plans (C-103A)

CONDITIONS

Created By	Condition	Condition Date
pkautz	If cement is not circulated to surface during cementing operations, a Cement Bond Log (CBL) is required.	1/7/2025
pkautz	Cement is required to circulate on both surface and intermediate1 strings of casing.	1/7/2025