

<b>C-102</b>  Submit Electronically Via OCD Permitting	State of New Mexico Energy, Minerals & Natural Resources Department <b>OIL CONSERVATION DIVISION</b>	Revised July 9, 2024	
		Submittal Type:	<input checked="" type="checkbox"/> Initial Submittal
			<input type="checkbox"/> Amended Report
			<input type="checkbox"/> As Drilled

## WELL LOCATION INFORMATION

API Number <b>30-015-55972</b>	Pool Code 98220	Pool Name Purple Sage; Wolfcamp
Property Code <b>335407</b>	Property Name <b>WATER BUFFALO</b>	Well Number <b>212H</b>
OGRID No. <b>372165</b>	Operator Name <b>PERMIAN RESOURCES OPERATING, LLC</b>	Ground Level Elevation <b>3,202.00'</b>
Surface Owner: <input type="checkbox"/> State <input checked="" type="checkbox"/> Fee <input type="checkbox"/> Tribal <input type="checkbox"/> Federal		Mineral Owner: <input checked="" type="checkbox"/> State <input checked="" type="checkbox"/> Fee <input type="checkbox"/> Tribal <input type="checkbox"/> Federal

## Surface Location

UL	Section	Township	Range	Lot	Ft. from N/S	Ft. from E/W	Latitude	Longitude	County
I	3	22S	26E		2,355' FSL	196' FEL	32.421093°	-104.272709°	EDDY

## Bottom Hole Location

UL	Section	Township	Range	Lot	Ft. from N/S	Ft. from E/W	Latitude	Longitude	County
H	1	22S	26E		1,650' FNL	330' FEL	32.424111°	-104.238631°	EDDY

Dedicated Acres 641.16	Infill or Defining Well Defining	Defining Well API	Overlapping Spacing Unit (Y/N)	Consolidation Code
Order Numbers.			Well setbacks are under Common Ownership: <input type="checkbox"/> Yes <input type="checkbox"/> No	

## Kick Off Point (KOP)

UL	Section	Township	Range	Lot	Ft. from N/S	Ft. from E/W	Latitude	Longitude	County
I	3	22S	26E		2,355' FSL	196' FEL	32.421093°	-104.272709°	EDDY

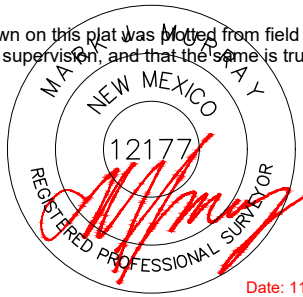
## First Take Point (FTP)

UL	Section	Township	Range	Lot	Ft. from N/S	Ft. from E/W	Latitude	Longitude	County
E	2	22S	26E		1,650' FNL	330' FWL	32.424132°	-104.270943°	EDDY

## Last Take Point (LTP)

UL	Section	Township	Range	Lot	Ft. from N/S	Ft. from E/W	Latitude	Longitude	County
H	1	22S	26E		1,650' FNL	330' FEL	32.424111°	-104.238631°	EDDY

Unitized Area or Area of Uniform Interest	Spacing Unit Type <input type="checkbox"/> Horizontal <input type="checkbox"/> Vertical	Ground Floor Elevation:
---	---	-------------------------

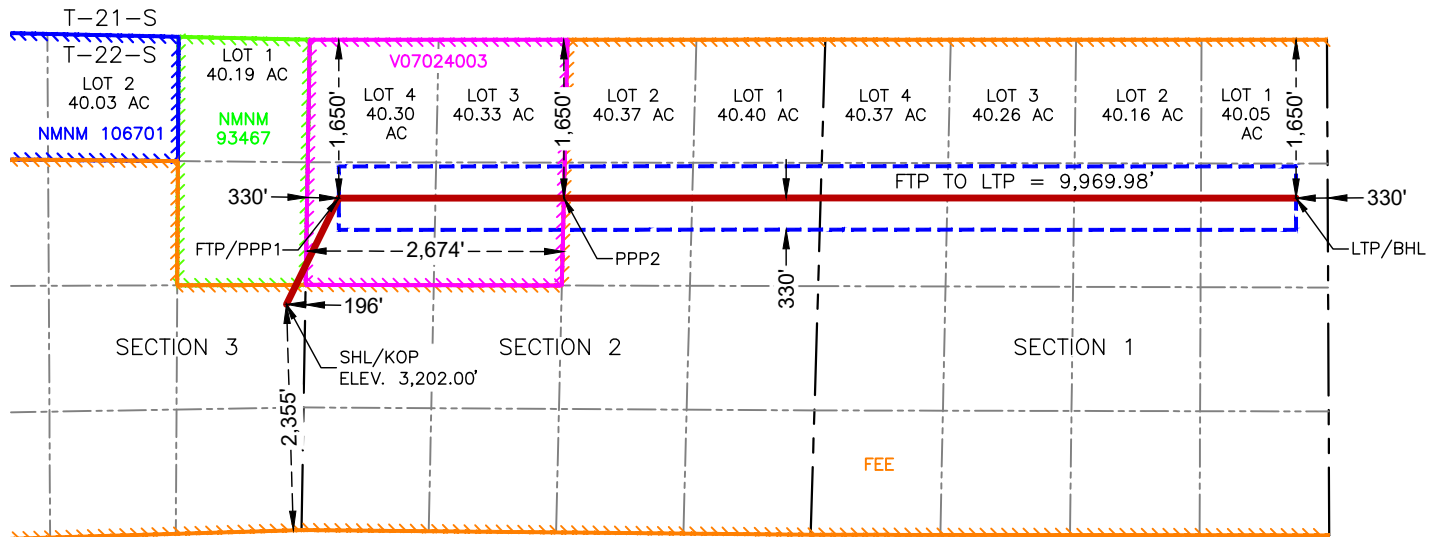
<b>OPERATOR CERTIFICATIONS</b>  I hereby certify that the information contained herein is true and complete to the best of my knowledge and belief, and, if the well is a vertical or directional well, that this organization either owns a working interest or unleased mineral interest in the land including the proposed bottom hole location or has a right to drill this well at this location pursuant to a contract with an owner of a working interest or unleased mineral interest, or to a voluntary pooling agreement or a compulsory pooling order heretofore entered by the division.  If this well is a horizontal well, I further certify that this organization has received the consent of at least one lessee or owner of a working interest or unleased mineral interest in each tract (in the target pool or formation) in which any part of the well's completed interval will be located or obtained a compulsory pooling order from the division.		<b>SURVEYOR CERTIFICATIONS</b>  I hereby certify that the well location shown on this plat was noted from field notes of actual surveys made by me or under my supervision, and that the same is true and correct to the best of my belief.   Date: 11/18/2024	
Signature <i>Cassie Evans</i> Date 12/24/24		Signature and Seal of Professional Surveyor	
Printed Name Cassie Evans		Certificate Number 12177	Date of Survey 11/18/2024
Email Address Cassie.Evans@permianres.com			

Note: No allowable will be assigned to this completion until all interests have been consolidated or a non-standard unit has been approved by the division.

## ACREAGE DEDICATION PLATS

This grid represents a standard section. You may superimpose a non-standard section, or larger area, over this grid. Operators must outline the dedicated acreage in a red box, clearly show the well surface location and bottom hole location, if it is directionally drilled, with the dimensions from the section lines in the cardinal directions. If this is a horizontal wellbore show on this plat the location of the First Take Point and Last Take Point, and the point within the Completed interval (other than the First Take Point or Last Take Point) that is closest to any outer boundary of the tract.

Surveyors shall use the latest United States government survey or dependent resurvey. Well locations will be in reference to the New Mexico Principal Meridian. If the land is not surveyed, contact the OCD Engineering Bureau. Independent subdivision surveys will not be acceptable.



**SURFACE HOLE LOCATION  
& KICK-OFF POINT**  
2,355' FSL & 196' FEL  
ELEV. = 3,202.00'

NAD 83 X = 560,043.79'  
NAD 83 Y = 516,930.09'  
NAD 83 LAT = 32.421093°  
NAD 83 LONG = -104.272709°  
NAD 27 X = 518,862.82'  
NAD 27 Y = 516,870.45'  
NAD 27 LAT = 32.420976°  
NAD 27 LONG = -104.272204°

**FIRST TAKE POINT &  
PENETRATION POINT 1**  
1,650' FNL & 330' FWL

NAD 83 X = 560,588.31'  
NAD 83 Y = 518,035.95'  
NAD 83 LAT = 32.424132°  
NAD 83 LONG = -104.270943°  
NAD 27 X = 519,407.36'  
NAD 27 Y = 517,976.26'  
NAD 27 LAT = 32.424015°  
NAD 27 LONG = -104.270437°

**PENETRATION POINT 2**  
1,650' FNL & 2,674' FWL

NAD 83 X = 562,932.50'  
NAD 83 Y = 518,036.62'  
NAD 83 LAT = 32.424130°  
NAD 83 LONG = -104.263345°  
NAD 27 X = 521,751.50'  
NAD 27 Y = 517,976.89°  
NAD 27 LAT = 32.424012°  
NAD 27 LONG = -104.262840°

**LAST TAKE POINT &  
BOTTOM HOLE LOCATION**  
1,650' FNL & 330' FEL

NAD 83 X = 570,558.29'  
NAD 83 Y = 518,035.77°  
NAD 83 LAT = 32.424111°  
NAD 83 LONG = -104.238631°  
NAD 27 X = 529,377.16°  
NAD 27 Y = 517,975.93°  
NAD 27 LAT = 32.423993°  
NAD 27 LONG = -104.238126°

Sante Fe Main Office  
Phone: (505) 476-3441

General Information  
Phone: (505) 629-6116

Online Phone Directory  
<https://www.emnrd.nm.gov/oed/contact-us>

State of New Mexico  
Energy, Minerals and Natural Resources  
Oil Conservation Division  
1220 S. St Francis Dr.  
Santa Fe, NM 87505

CONDITIONS

Action 419616

CONDITIONS

Operator: Permian Resources Operating, LLC 300 N. Marienfeld St Ste 1000 Midland, TX 79701	OGRID: 372165
	Action Number: 419616
	Action Type: [C-102] Well Location & Acreage Plat (C-102)

CONDITIONS

Created By	Condition	Condition Date
matthew.gomez	None	1/10/2025