

Well Name: JAMES RANCH UNIT	Well Location: T23S / R31E / SEC 6 / SWNE / 32.3353149 / -103.8148177	County or Parish/State: EDDY / NM
Well Number: 7	Type of Well: OIL WELL	Allottee or Tribe Name:
Lease Number: NMNM02887A	Unit or CA Name:	Unit or CA Number: NMNM70965O
US Well Number: 3001521247	Operator: XTO PERMIAN OPERATING LLC	

Subsequent Report

Sundry ID: 2828779

Type of Submission: Subsequent Report	Type of Action: Plug and Abandonment
Date Sundry Submitted: 12/23/2024	Time Sundry Submitted: 11:45
Date Operation Actually Began: 09/17/2024	

Actual Procedure: XTO Permian Operating LLC., has P&A'd the above mentioned well per the attached P&A Summary Report and WBD.

SR Attachments

Actual Procedure

James_Ranch_Unit_007_Sbsq_P_A_Summary_Rpt___WBD_20241223114259.pdf

Received by OCD: 12/27/2024 6:19:40 AM

Page 2 of 9

Well Name: JAMES RANCH UNIT		Well Location: T23S / R31E / SEC 6 / SWNE / 32.3353149 / -103.8148177	County or Parish/State: EDDY / NM
Well Number: 7	Type of Well: OIL WELL		Allottee or Tribe Name:
Lease Number: NMNM02887A	Unit or CA Name:	Unit or CA Number: NMNM70965O	
US Well Number: 3001521247	Operator: XTO PERMIAN OPERATING LLC		

Operator

I certify that the foregoing is true and correct. Title 18 U.S.C. Section 1001 and Title 43 U.S.C. Section 1212, make it a crime for any person knowingly and willfully to make to any department or agency of the United States any false, fictitious or fraudulent statements or representations as to any matter within its jurisdiction. Electronic submission of Sundry Notices through this system satisfies regulations requiring a

Operator Electronic Signature: SHERRY MORROW	Signed on: DEC 23, 2024 11:43 AM
Name: XTO PERMIAN OPERATING LLC	
Title: Regulatory Analyst	
Street Address: 6401 HOLIDAY HILL ROAD BLDG 5	
City: MIDLAND	State: TX
Phone: (432) 218-3671	
Email address: SHERRY.MORROW@EXXONMOBIL.COM	

Field

Representative Name:		
Street Address:		
City:	State:	Zip:
Phone:		
Email address:		

BLM Point of Contact

BLM POC Name: JAMES A AMOS	BLM POC Title: Acting Assistant Field Manager
BLM POC Phone: 5752345927	BLM POC Email Address: jamos@blm.gov
Disposition: Accepted	Disposition Date: 12/23/2024
Signature: James A Amos	

James Ranch Unit 007
API 30-015-21247
P&A Summary Report

9/17/24: MIRU. Pmp 162 bbls, 2x tbq cap, 10# brine dwn 2-7/8" tbq w/blue marker. Rec 172 bbls fld fr/well w/no marker found in returns. SWI. SDFN.

9/18/24: Bld dwn TCA & tbq to wrk tnk. Pmp 81 bbls 10# brine dwn TCA. Circ 60 bbls oil mxd w/prod wtr to wrk tnk. Well on vac. MIRU Trq & Tst. ND WH. NU 5k BOP. Perf high & low tst. Tstd good. RDMO. Wrk tbq & rls pkr. TOH & LD 1 jt 2-7/8" , 6.5 #, N-80, EUE tbq. Cont TOH & LD 5 -2-7/8" tbq subs (1-2', 1-8', 3-6'). TOH to derrick 4 jts 2-7/8" tbq. TIH 4 jts 2-7/8" tbq f/derrick. SWI. SDFN.

9/19/24: MIRU HO & trans. Pump 110 gal Xylene dwn 2-7/8" tbq. WO Xylene to react f/30 min, followed w/170 BFW trd w/Bio @ 240 deg. Circ oil & paraffin to wrk tnk. RDMO. Cont TOH 349jts 2-7/8" tbq (Found hole in jt #249), FH pkr, 2 jts 2-7/8" tbq, sliding sleeve & 1/4 piece of jt #353 (prtd due to bacteria). SWI. SDFN.

9/20/24: MIRU Ranger WL. Tstd lub. Tstd good. Rls press. RIH 6.52 GR/JB. FL @ 250' FS. Tgd TOF @ 10,975'. POH WL. RDMO WL. TIH 5-3/4 x 2-1/8 ID OS w/6-1/8" guide, 3-7/8" x 1-1/4 xo, 3-7/16 x 1-1/2" xo, 3-1/8" x 1" Lub BS, 3-1/8" x 1" Jar, 3-1/2" x 1" xo, 4 - 3-1/8" DC's, 3-5/8" x 1-1/2" TS & 88 jts 2-7/8", 6.5 N-80, EUE tbq. EOT @ 2,898'. SWI. SDFN.

9/21/24: MIRU. 3 FW trans w/300 bbls FW ttl. Flsh 2-7/8" tbq w/17 BFW @ 220 deg. Pmp 41 gals Xylene dwn 2-7/8" tbq. Re-flsh 2-7/8" tbq w/17 BFW @ 220deg. TIH 88 jts 2-7/8" N-80 tbq. EOT @ 5,639'. Fish 2-7/8" tbq w/11 BFW @ 220 deg. Found tbq pld f/paraffin. TOH 70 jts 2-7/8" tbq. Found Paraffin plg in jts 108 & 107. Wrkd paraffin plg out of jts 108 & 107. EOT 2,276'. Att to Flsh 2-7/8" tbq w/240 deg FW. Press @ 2,000 psi. SWI. Lft press on tbq. SDFN.

9/22/24: Bld dwn TCA to wrk tnk. Strt press @ 50 psi. Ending Press @ 0 psi. TOH 48 jts 2-7/8" tbq. Found Paraffin plg in jts 101, 102, 60 & 59. EOT 1,966'. Clr Paraffin plgs. Stg #1: TIH 46 jts 2-7/8" tbq. EOT @ 3,392'. Flsh 2-7/8" tbq w/20 BFW @ 240 deg. Pmp 41 gals Xylene dwn 2-7/8" tbq. Re-flsh 2-7/8" tbq w/20 BFW @ 240 degs. Stg #2: TIH 24 jts 2-7/8" tbq. EOT @ 4,142'. Flsh 2-7/8" tbq w/24 BFW @ 240 deg. Pmp 41 gals Xylene dwn 2-7/8" tbq. Re-flsh 2-7/8" tbq w/24 BFW @ 240 degs. Stg #3: TIH 72 jts 2-7/8" tbq. EOT @ 6,384'. Flsh 2-7/8" tbq w/37 BFW @ 240 deg. Pmp 41 gals Xylene dwn 2-7/8" tbq. Re-flsh 2-7/8" tbq w/41 BFW @ 240 degs. Stg #4: TIH 24 jts 2-7/8" tbq. EOT @ 7,122'. Flsh 2-7/8" tbq w/41 BFW @ 240 deg. Pmp 41 gals Xylene dwn 2-7/8" tbq. Re-flsh 2-7/8" tbq w/41 BFW @ 240 degs. Stg #5: TIH 24 jts 2-7/8" tbq. EOT @ 7,513'. Flsh 2-7/8" tbq w/46 BFW @ 240 deg. Pmp 41 gals Xylene dwn 2-7/8" tbq. Re-flsh 2-7/8" tbq w/46 BFW @ 240 degs. Cont TIH 16 jts 2-7/8" tbq. EOT @ 7988'. RDMO. SWI. SDFN.

9/23/24: Stage 6: TIH 10 jts 2-7/8" tbq. EOT @ 8,298'. Pmp 55 gals Xylene dwn 2-7/8" tbq. Flsh 2-7/8" tbq w/50 BFW @ 240 degs. Stage 7: TIH 24 jts 2-7/8" tbq. EOT @ 9,037'. Pmp 55 gals Xylene dwn 2-7/8" tbq. Flsh 2-7/8" tbq w/60 BFW @ 240 degs. Stage 8: TIH 48 jts 2-7/8" tbq. EOT @ 10,529'. Pmp 55 gals Xylene dwn 2-7/8" tbq. Flsh 2-7/8" tbq w/3 BFW @ 240 degs. Press @ 2,000 psi. Lft press on tbq ovr night. SWI. SDFN.

9/24/24: Pumped 15 bbls and tbg plugged off W/ paraffin. Stand back 15 Stnds found 60' of paraffin in TBG. Lay down 2 jnts pump 85 bbls of hot water clean TBG. EOT 10,654' 338 Jnts. Secure Well and SDFN.

9/25/24: RIH W/ 10 jnts to 10,937'. Pumped 75 bbls hot water. Circulate Dyed marker 500 bbls of 10# Brine. 3bpm @ 1,100 psi. PU- 75K RIH tag fish @ 10,986'. Latch and pull 35K over and jar PU-110K. Several attempts with no movement. Pump 2.7 bpm at 1,300 psi. Jar on fish with no movement. Secure well and SDFN.

9/26/24: Circ hot water. Several attempts to jar fish free and not successful. Pulling 35K over and jar. Call was made to PU and RBIH W/ PH6 WS. Release OS and POOH laying down 2 7/8 prod string. 149 Jnts in hole EOT- 4,802'. Secure well and SDFN.

9/27/24: POOH laying down Prod tbg and BHA. Make up tools and RIH W/ PH6 WS EOT-6,551' 209 Jnts Secure Well and SDFN.

9/28/24: RIH to TOF- 10,980' 345 Jnts. Latch onto fish PU- 90K SW. Pull 20K over to confirm latch. RU Kelly hose. RU hot oiler pump 2 bbls and pressure out. TBG plugged. MIRU WLU. RIH W/ 1.70" GR and tag up at 4,675'. Could not get past 4,675'. POOH. Once OOH found paraffin on WL tools. Burn off of fish lay 2 jnts down. EOT 10,945'. Secure well and SDFN.

9/29/24: MIRU Hot oiler. Pump 110 bbls 180-degree water 1 bpm 300 psi. Latch onto fish at 10,980'. MIRU WLU. Tag TOF 10,993' WL Depth. Unable to get inside of fish. POOH RDMO WLU. String WT-88K Pulled 140K fish did not move. Unlatch fish and POOH to pick up jars and replace grapple.

9/30/24: Discussed planned hold points and job scone. RIH W/ fishing BHA to TOF 10,980' Latch onto fish. PU WT-88K Sat down -10K turned to the right unable to get off of packer. Jar on fish with 30k over and not successful. Pulled 65K over several attempts with no movement. Secure Well and SDFN.

10/1/24: PU-88K Pulled 10K over and turned to the right with no torque OS slipping. Pulled 15K over and turned to the right, 1600 ft lbs torque 26 turns into it torque was lost, OS slipping. PU Wt still 88K. Release OS and POOH. All WS and Tools OOH. Secure Well and SDFN.

10/2/24: RIH W/ WS and fishing BHA. Retorque all connections to 4,300 ft lbs. RU Graco Swivel. Tag-10,980' SW-82K Free Torque- 700 PU 40K over to confirm latch to fish. Pulled 24K over and perform back off. 31 turns at 3,650 torque and pipe were free. Sat down to confirm OS didn't slip. PU 86K after back off, 4K over original SW. POOH. Secure Well and SDFN.

10/3/24: Cont POOH W/ WS. Recovered all WS but BHA was still in hole attached to fish. Top bushing PH6 box looking up. Waiting on Graco to build a 6" OD sub to run on the end on PH6 WS to keep pin end centralized to screw back into top bushing of BHA. PU Centralizer sub and RIH. Retorque every connection to 4,400 on the way in hole. RIH tag TOF 10,980'. 16 turns to the right and torqued to 4,200. Pulled 15K over string weight. Slack off to neutral SW-88K. Secure well and SDFN.

10/4/24: TOF-10,980' SW-86K Pull 15K over SW had free travel. Worked fish a few times and pulled through with 8K over SW. Lay 1 joint down and continue ooh W/ no drag. POOH 86K SW. BHA on surface with no fish. Add an extension to latch onto collar below TOF. Secure Well and SDFN.

10/5/24: RIH to TOF 10,980' 345 jnts Torque Every jnt of PH6 WS to 4,400 ft lbs. Latch fish. SW-81K Latch fish PU-20K over PU to 105K set torque to 2,850 ft lbs work pipe and 18 turns pipe broke free. SW 82K, no drag off bottom. Lay down 2 jnts. Secure well and SDFN.

10/6/24: POOH Standing back PH6 WS. Once ooh it was discovered that bottom extension backed off. Left in hole bottom extension W/ grapple and guide. RBIH turn to the right and screw back into BHA. 26 turns. Torque to 3,000 ft lbs. Unlatch OS. lay down 3 jnts. Secure Well and SDFN.

10/7/24: POOH W/ PH6 WS and BHA. All tools back on surface. Secure Well and SDFN.

10/8/24: TIH 5.5" x 6.05' Shoe w/6-1/8" sod, flat btm 4" Flute ID, 3 jts 5.5" WP, 5.5" TB, 3-3/4" jars & 341 jts 2-7/8" PHD HD tbg. EOT @ 10,973'. SWI & SDFN.

10/9/24: TIH w/BHA & PH6. SDFN.

10/10/24: Brk circ @ 10,973'. Wash dwn 4 jts 2-7/8" PH6 tbg (345 ttl jts). Tgd TOF @ 10,980'. Shoe @ 11,076'. Circ cln (Found lt scale in returns). TOH 345 jts 2-7/8" PH6 tbg & BHA. (Found 2-7/8" x 2.7' section of tbg in WOP). TIH 5-7/8" external cutter, 2 jts 5-1/2" WP, 5-1/2" top bushing, 3-3/4" jars & 84 jts 2-7/8" PH6 HD tbg. EOT @ 2,762'. SWI. SDFN.

10/11/24: Cont TIH 256 jts 2-7/8" PH6 HD tbg. RU pwr swl. PU 5 jts 2-7/8" PH6 HD tbg. Tgd TOF @ 10,972'. Att to shear T-dog w /results. MIRU HO. Pmp 120 bbls frsh wtr @ 220* dwn 2-7/8" PH6 HD tbg. Att to LD 3rd jt & Pld hvy @ 10,980' (342 jts ttl in hole). Went through procedure to cut tbg w/no results. EOT @ 10,997'. SWI. SDFN.

10/12/24: RIH 2 jts 2-7/8" PH6 HD tbg. Tgd TOF @ 10,972'. TOH & LD 2 jts 2-7/8" PH6 HD tbg. Pld Hvy @ 10,980' (tbg collar). Made cut w/external cutter @ 10,982'. TOH 342 jts 2-7/8" PH6 HD tbg & BHA. Recover 6' section of 2-7/8" tbg (fish). TIH OS w/2-7/8" basket grapple, 2-7/8"x12' PH6 HD tbg sub & 282 jts 2-7/8" PH6 HD tbg. EOT @ 9,059'. SWI. SDFN.

10/13/24: Cont TIH 62 jts 2-7/8" PH6 HD tbg & 3 - 2-7/8" PH6 HD tbg subs. Ltch TOF. MIRU WL. RIH 1.90 GR & tgd @ 13,917'. POH w/GR. RIH 1.875 Jet cutter. Tgd @ 13,917'. PU 2' & cut 2-7/8" N-80 tbg @ 13,915'. POH w/cutter. Pmp 336 bbls dwn 2-7/8" PH6 HD tbg @ 1.4 bpm & 2,500 psi. WO WL tl. RIH w/1-11/16' stuck pipe log. Logged fr/13,900 - 10,900'. Found bridge around collar 13,066'. POH w/logging tl. SWI. SDFN.

10/14/24: Pmp 84 bbls dwn 2-7/8" PH6 HD tbg @ 1.4 bpm & 2,500 psi. RIH 1-3/8" FPT. Freepoint @ 13,900 - 25%, 13,868' - 75% & 13,845' - 100%. POH w/FPT. RIH 1.90 Jet cutter. Pld 120k on tbg strng & Cut 2-7/8" N-80 tbg @ 13,875'. RDMO WL. Pmp 475 bbls dwn 2-7/8" PH6 HD tbg @ 3.5 bpm & 500 psi. TOH & LD 129 jts 2-7/8" PH6 HD tbg. SWI. SDFN.

10/15/24: TOH & LD 215 jts 2-7/8" PH6 HD tbg, BHA, 1/2 jt 2-7/8", 6.5 lbs/ft, N-80 tbg, 3 -3-1/2" blast jts & 89 & 1/2 jts 2-7/8", 6.5 lbs/ft, N-80 tbg. SWI. SDFN.

10/16/24: MIRU WL. RIH w/4.0 GR/JB to 8,965'. POOH w/WL. RIH w/4.0 GR/JB & tgd TOF @ 13,875'. POH w/WL & tls. Found top of 5" liner @ 11,645'. RIH w/3.950 CIBP. Set CIBP @ 13,875'. POH w/WL & setting tl. RIH 3.50 dump bailer (2 ttl runs made). Dump bail 30 gal = 40', 17 ppg Class H cmt. 7 sxs RDMO WL. SWI. SDFN.

10/17/24: TIH 338 jts 2-7/8", 6.5 lbs/ft, N-80 EUE prod tbg. EOT @ 10,501'. SWI. SDFN.

10/18/24: ND BOP. Lnd tbg w/TC1A hngr. NU 5k prod tree. SWI.

10/23/24: ND tree. NU FT PT BOP. PT blinds and rams to 3500 psi on high side and 300 psi on low side for 10 minutes each. PT good. PSI held. PT charted. Circ 50 bbls 10# BW to ensure that tbg was not plugged w/paraffin. Rack tbg onto pipe racks, tally tbg, PU tbg and TIH. Total tbg PU 78 jnts 2-7/8 L80 tbg (total in hole 416 jnts 2-7/8 L80 tbg). TOH LD 60 jnts 2-7/8 L80 tbg. EOT @ 13,831'. Circ 100 bbls 10# BW. Good returns to pit. Swapped to CMT spotted 230 sks Class H CMT (FW Mix 23.5 bbls, Slurry Vol 43.42 bbls, FOF 2444', CTOC 11,387') Displaced w/66 bbls 10# BW. TOH 24 jnts 2-7/8 L80 tbg. TOH 36 jnts. SDFN.

10/24/24: LD 1 jnt 2-7/8 L80 tbg. MIRU WLU. RIH tag CMT inside tbg @ 12,592'. Pull up 3' and punch holes in tbg. POOH. RDMO WLU. TOH std 384 jnts 2-7/8 L80 tbg. Found CMT at top of jnt 385. LD 24 jnts. 31 jnts in the hole. SDFN.

10/25/24: TOH LD 33 jnts 2-7/8 L80 tbg (total jnts w/CMT at 54 plus punch joint). TIH 384 jnts 2-7/8 L80 tbg from derrick EOT @ 12,096'. Rack, tally PU and TIH 13 jnts 2-7/8 L80 tbg and 18' of the next jnt. TTOC @ 12,592'.

10/28/24: TIH 20 jnts 2-7/8 L80 tbg and TTOC @ 12,592". TOH LD 1 jnts. EOT @ 12,563'. Circulate 130 bbls 10# BW. Pumped a 20 bbl FW spacer. Spotted 148 sks Class H CMT (FW mix 15.5 bbls, Slurry Vol 27.94 bbls, CTOC 11,565'). Displaced w/5 bbl FW spacer followed by 67 bbls 10# BW. TOH 74 jnts 2-7/8 L80 tbg. EOT @ 9954'. Rev circulated 67 bbls 10# BW. SDFN.

10/29/24: TIH 41 jnts 2-7/8 L80 tbg and 10' of jnt 42. TTOC @ 12,255'. TOH LD 31 jnts and std back 366 jnts 2-7/8 L80 tbg. MIRU WLU. RIH w/6.21 OD GRJB and TTOC @ 11,262' w/WL. POOH. RIH w/6.15 2-7/8 CIBP and set @ 11,133'. POOH. RDMO WLU. SDFN.

10/30/24: TIH 160 jnts 2-7/8 L80 tbg. 194 jnts 2-7/8 L80 tbg. Tagged CIBP @ 11152' w/tbg. Secure well and SDFN.

10/31/24: Circ 320 bbls 10# BW @ 1.5-2 bpm, 200 psi. Spot CMT. 6 bbls FW spacer, swapped to CMT and spotted 60 sks Class H CMT (FW Mix 6.25 bbls, Slurry Vol 11.32 bbls, FOF 246', CTOC 10,936') pumped 6 bbls FW spacer, displaced w/63.25 bbls 10# BW. TOH 60 jnts 2-7/8 L80 tbg. EOT 9292'. 292 jnts in the hole. Rev circulated 60 bbls 10# BW. RD CMT pump. SDFN.

11/1/24: TIH 52 jnts 2-7/8 L80 tbg and 15' of the 53 jnt (total jnts in 347) TTOC @ 10,920'. BLM onsite to witness tag (Vincent Navarrette). PT CIBP/CMT 500 psi for 40 minutes. BLM Inspector onsite for the first portion of test. TOH std back 294 jnts 2-7/8 L80 tbg and LD 121 jnts. SDFN.

11/2/24: MIRU WLU. RIH TTOC w/WL @ RCBL out. RDMO WLU. SDFN.

11/3/24: TIH 250 jnts 2-7/8 L80 tng. EOT @ 7875'. Broke w/10 bbls 10# BW. Pumped 16 bbls FW spacer, swapped to CMT. Spot 44 sks Class H CMT (FW mix 4.5 bbls, Slurry Vol 8.3 bbls, FOF 182', CTOC 7693'). 5 bbls FW spacer Displaced w/44.6 bbls 10# BW. TOH std back 80 jnts 2-7/8 L80 tbg. EOT @ 5355', Tbg in hole 170 jnts. Rev circ 36 bbls 10# BW @ 1512'. SDFN.

11/4/24: MIRU WLU. RIH TTOC @ 7680. PU and perf @ 6840'. POOH RDMO. TOH LD 48 jnts 2-7/8 L80 tbg. EIR. 1.5 bpm @ 1000 psi. Would lose psi as soon as we stopped pumping.

11/6/24: PU 4' sub and PKR. TIH 202 jnts 2-7/8 L80 tbg and set pkr @ 6369'. Slack off weight 40 pts and sat down 26 pts. Loaded csg above pkr to PT and ensure it was set good. 500 psi for 5 minutes. PSI held. Sqz 120 sks Class C CMT (FW mix 12.25 bbls, Slurry vol, 22.65 bbls, FOF 150', CTOC @ 6690'.) Displaced w/52 bbls 10# BW. Shut in. WOC. Unset pkr. PU and TIH 12 jnts 2-7/8 L80 tbg. Total jnts in hole 212. TTOC @ 6673'. TOH std back 128 jnts 2-7/8 L80 tbg. LD 16 jnts. Total 68 jnts in hole. SDFN.

11/7/24: TOH LD 68 jnts 2-7/8 L80 tbg. LD pkr. MIRU WLU. RIH perf @ 4019'. 400 psi on it. Blew some from intermediate and nothing out of surface. POOH. RDMO WLU. EIR. Pump 10 bbls 10# BW @ 3 bpm. No psi. PU 4' 32A 7-5/8 tension pkr w/SC unloader. TIH 120 jnts 2-7/8 L80 tbg. EOT @ 3791'. PU weight 22 pts. Sat pkr w/24 pts over pull. Pumped 60 bbls and got returns to pit. Dyed up 24 bbls w/blue dye and circulated 235 bbls before we got blue dye to pit. Shut in the intermediate (10-3/4) and left surface open (13-3/8) and pumped 175 bbls more. Never got returns at surface through the 13-3/8. ever got psi over 300. SD.

11/8/24: BLM approval to shorten sqz. Unset pkr and TOH LD 50 jnts 2-7/8 L80 tbg. Total in hole 80 jnts, pkr and 4' sub. Set pkr. EOT @ 2216'. Broke circ 19 bbls 10# BW. Swapped to CMT and sqz 570 sks Class C CMT. Secure well. SDFWE.

11/11/24: TIH 12 jnts 2-7/8 L80 tbg (total in hole 82 jnts) and TTOC @ 2585'. TOH LD 71 jnts 2-7/8 L80 tbg. (10 jnts in hole) EOT @ 315'. Set pkr. MIRU WLU. RIH TTOC @ 3605' w/WL. Move up perf @ 3600' (2580' w/tbg tally)/ POOH RDMO WLU. TOH std back 10 jnts 2-7/8 L80 tbg. MIRU WLU. RIH perf @ 2550' WL. Had 400 psi on it and blew glove out and got water out of the 10-3/4 as well. RDMO WLU.

11/12/24: Pumped 12 bbls 10# BW @ 2.5 bpm w/1300 psi. Pressure never broke back but we did have bbl in bbl out at pit. MIRU WLU. RIH TTOC @ 2605'. RIH and perf @ 2575'. RDMO WLU. EIR. 15 bbls 10# BW @2.5 bpm w/150 psi. SDFN.

11/13/24: MIRU WLU. RIH w/dump baler. RDMO WLU. Circ 10# BW down csg and up the intermediate. 2.5 bpm w/100 psi. Total pumped was 40 bbls. bbl in bbl out immediately. Make up 4' sub and pkr. TIH 10 jnts 2-7/8 L80 tbg and set pkr @ 315'. EOT @ 324'. Sqz 273 sks Class C CMT. (FW Mix 115.8 bbls, Slurry Vol 181.5, FOF 2075', CTOC 500') Displaced w/10.25 bbls washed out to pit. SDFN.

11/14/24: PU 6 jnts 2-7/8 L80 tbg and TTOC @ 486'. (total in hole 15 jnts and 3' of 16th jnts, pkr and 4' sub. TOH LD 15 jnts 2-7/8 L80 tbg. 1 4' sub and pkr. MIRU WLU. RIH TTOC @ 461'w/WLU. Pull up 10' and perf @ 451'. Perfed under 400 psi. Blew glove out and circ water out the intermediate. POOH RDMO WLU. EIR. Pumped 30 bbls 10# BW. Good returns to pit immediately. 2.5 bpm @ 0 psi. RD work floor. ND BOP. NU B1 adapter. sqz 266 sks Class C CMT (FW Mix 39 bbls, Slurry Vol 61.12 bbls). Good returns to surface out the intermediate (10 3/4) and the surface (13 3/8). SDFN.

11/15/24: RDMO.

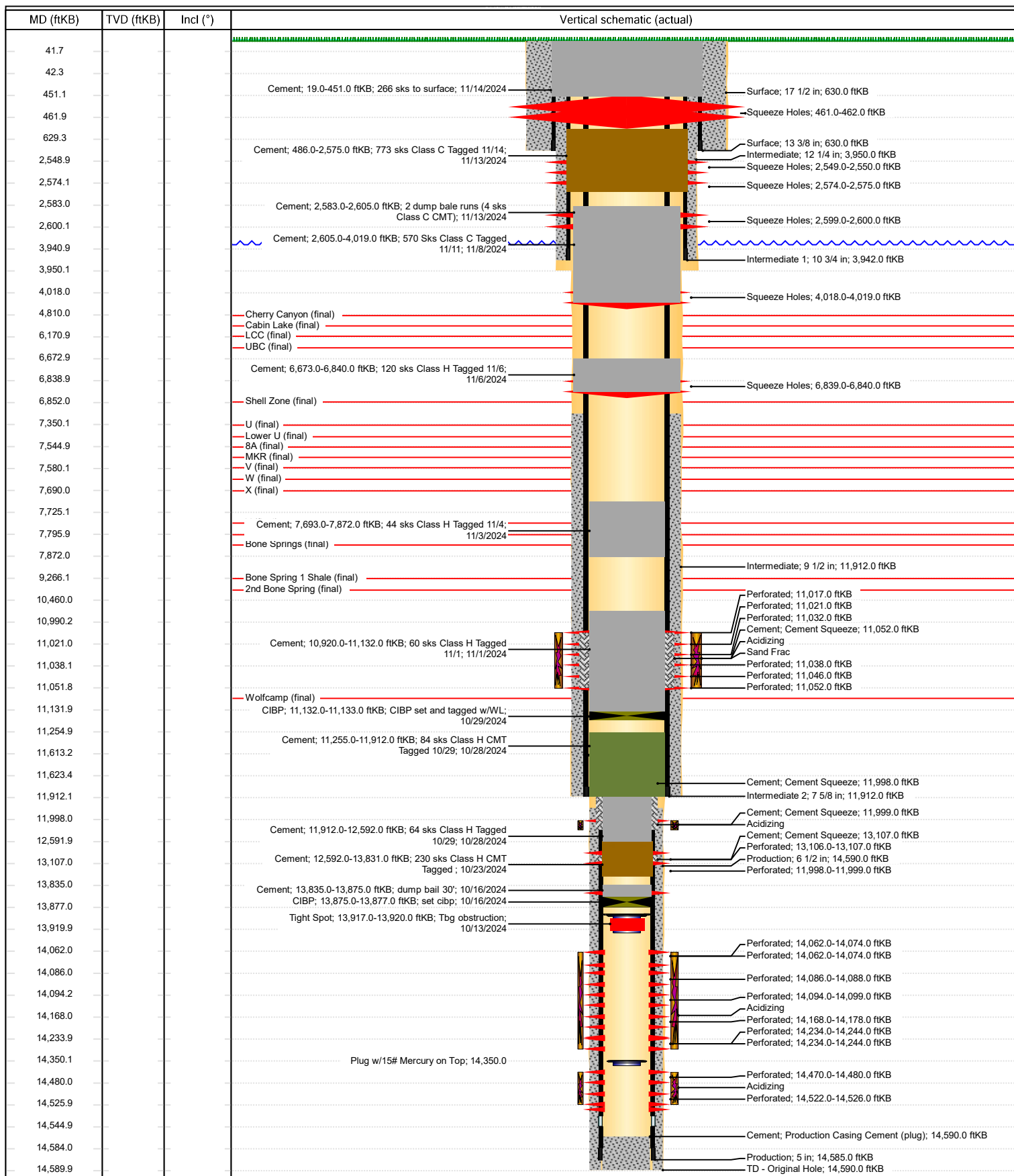
12/12/24: Cut off Wellhead and set DHM.



Schematic - Vertical with Perfs

Well Name: James Ranch Unit 007

API/UWI 3001521247	SAP Cost Center ID 1135641001	Permit Number	State/Province New Mexico	County Eddy
Surface Location T23S-R31E-S06	Spud Date 6/29/1974 09:45	Original KB Elevation (ft) 3,338.00	Ground Elevation (ft) 3,319.00	KB-Ground Distance (ft) 19.00



Sante Fe Main Office
Phone: (505) 476-3441

General Information
Phone: (505) 629-6116

Online Phone Directory
<https://www.emnrd.nm.gov/oed/contact-us>

State of New Mexico
Energy, Minerals and Natural Resources
Oil Conservation Division
1220 S. St Francis Dr.
Santa Fe, NM 87505

CONDITIONS

Action 415378

CONDITIONS

Operator: XTO PERMIAN OPERATING LLC. 6401 HOLIDAY HILL ROAD MIDLAND, TX 79707	OGRID: 373075
	Action Number: 415378
	Action Type: [C-103] Sub. Plugging (C-103P)

CONDITIONS

Created By	Condition	Condition Date
gcordero	None	1/10/2025