

Well Name: POKER LAKE UNIT	Well Location: T24S / R30E / SEC 18 / SWSE / 32.12437 / -103.5507	County or Parish/State: EDDY / NM
Well Number: 212	Type of Well: OIL WELL	Allottee or Tribe Name:
Lease Number: NMNM02860	Unit or CA Name: POKER LAKE DELAWARE C	Unit or CA Number: NMNM71016G
US Well Number: 3001533915	Operator: XTO PERMIAN OPERATING LLC	

Subsequent Report

Sundry ID: 2827594

Type of Submission: Subsequent Report

Date Sundry Submitted: 12/16/2024

Date Operation Actually Began: 07/22/2024

Type of Action: Plug and Abandonment

Time Sundry Submitted: 09:11

Actual Procedure: XTO Permian Operating LLC., has P&A'd the above mentioned well per the attached P&A Summary Report and WBD. Two CBL's also submitted.

SR Attachments

Actual Procedure

- XTO__Poker_Lake_Unit_212_CBL_9_27_24_20241216090946.pdf
- XTO__PLU_212_CBL_LOG_10_8_24_20241216090935.pdf
- PLU_212_Sbsq_P_A_Summary_Rpt_wWBD_20241216090831.pdf

Received by OCD: 12/26/2024 12:50:44 PM

Page 2 of 7

Well Name: POKER LAKE UNIT	Well Location: T24S / R30E / SEC 18 / SWSE / 32.12437 / -103.5507	County or Parish/State: EDDY / NM
Well Number: 212	Type of Well: OIL WELL	Allottee or Tribe Name:
Lease Number: NMNM02860	Unit or CA Name: POKER LAKE DELAWARE C	Unit or CA Number: NMNM71016G
US Well Number: 3001533915	Operator: XTO PERMIAN OPERATING LLC	

Operator

I certify that the foregoing is true and correct. Title 18 U.S.C. Section 1001 and Title 43 U.S.C. Section 1212, make it a crime for any person knowingly and willfully to make to any department or agency of the United States any false, fictitious or fraudulent statements or representations as to any matter within its jurisdiction. Electronic submission of Sundry Notices through this system satisfies regulations requiring a

Operator Electronic Signature: SHERRY MORROW	Signed on: DEC 16, 2024 09:10 AM
Name: XTO PERMIAN OPERATING LLC	
Title: Regulatory Analyst	
Street Address: 6401 HOLIDAY HILL ROAD BLDG 5	
City: MIDLAND	State: TX
Phone: (432) 218-3671	
Email address: SHERRY.MORROW@EXXONMOBIL.COM	

Field

Representative Name:		
Street Address:		
City:	State:	Zip:
Phone:		
Email address:		

BLM Point of Contact

BLM POC Name: JAMES A AMOS	BLM POC Title: Acting Assistant Field Manager
BLM POC Phone: 5752345927	BLM POC Email Address: jamos@blm.gov
Disposition: Accepted	Disposition Date: 12/17/2024
Signature: James A Amos	

Poker Lake Unit 212
API 30-015-33915
P&A Summary Report

7/22/24: MIRU.

7/23/24: Open well and bled off all pressure. Monitor tbg & csg for 10 min, Close off csg. Pump down tbg 35 bbl. Well in vacuum. Latch onto PR, Unseat Pump, total rod string weight at 15 pts, RU all rod eqt. and rest floor eqt. POH LD Rods, recover back 295 rods. RD Rod assembly, Set 5k TIW valve. SI Tbg. MIRU Hot Oil Pump Truck, Pump and Flush csg side at 90 bbl at 160 deg's, SD Pump, RDMO Hot Oil Pump Truck. Tbg & Csg in Vacuum. SI csg side, secure well, SDFN.

7/24/24: OW, bled well to reverse pit, pump KWF fluid, well went on vacuum. Perform Draw down test on BOP, ND 7-1/16 3k Flange, RU 4' Pup x Test Hanger, LD hanger, NIU Markco 5K BOP, FT & PT, Pull TWC, Held Hold Point. POH, stood back 79 stds / 158 jt, LD 5 jts with holes, plus 9 more having tbg pitted. SD Ops, Secure well, SDFN.

7/25/24: Check pressure, OW, POH standing back and LD Bad Tbg, Found fluid level in Tbg at 6612' / 204Jt out. Call in for mud bucket. Continue POH, LD PSA and bad Tbg. (Total tbg POH 229 Jt) MI Tbg. TIH tagging bottom at depth 7321'. POH LD 2 Jt leaving EOT AT 7250'. RU Pump on Tbg, Flush Tbg capacity. SD Pump. Secure well SDFN.

7/26/24: Check pressure. SITP/ SICP 0 psi. OW, POH with 6' pup Jt. Set & Landed Tbg Hanger to ND BOP, Set lift sub, removed Tbg Hanger, NU 7-1/16 3k Flange, LD flange, Secure Well. RDMO. SD.

9/21/24: MIRU.

9/22/24: Check pressures. BD well. ND B1 Flange. NU FT PT BOP. PT blinds and pipes to 2850 high and 300 low for 5 minutes each. Test good and charted. PU TIH 2 jnts 2-7/8 L80 tbg plus 5' of the third joint and tagged CIBP @ 7321'. TOH LD 3 jnts. EOT @ 7250'. Circulated 225 bbls 10# brine down tbg. Never got returns to pit. 2.5 bpm w/ 0 psi. Spot 50 sks Class H CMT (FW mix 5.25 bbls, slurry volume 9.43 bbls, FOF 396', CTOC 6864', 1.06 yld. 16.4#) Displaced w/15 bbls 10# brine. TOH std back 40 jnts 2-7/8 L80 tbg. Pumped 10 bbls 10# brine down tbg. TOH std back 20 jnts 2-7/8 L80 tbg. EOT @ 5340'. Total tbg in hole 168 jnts 2-7/8 L80 tbg. SDFN.

9/23/24: TIH 48 jnts 2-7/8 L80 tbg nd TTOC @ 7089' (total jnts in hole 223). Waiting on BLM to notify us if they want another spot. Spot 20 sks Class H CMT (FW mix 2.25 bbls, slurry vol 4 bbls, FOF 160', CTOC 6929') Displaced w/13 bbls. STD back 34 jnts and pumped 10 bbls down tbg. TOH std back 148 jnts 2-8/8 L80 tbg and LD 35 jnts. WOC. TIH 221 jnts 2-7/8 L80 and 10' Of jnt 222. TTOC @ 7039'. TOH std back 222 jnts 2-7/8 L80 tbg. MIRU WLU. RIH w/4.65" OD GRJB. POOH. RD cheave and lubricator. SDFN.

9/24/24: MIRU WLU. RIH set CIBP @ 6000'. POOH. RDMO WLU. TIH 188 jnts 2-7/8 L80 tbg and 22' of jnt 189 and tagged CIBP @ 5998' w/tbg. Circulate 145 bbls SGM until returns at pit. Attempted to PT CIBP w/no success. Pumped 5 more bbls and attempted to PT once again w/no success. Surface began to gas. TOH std back 70 jnts 2-7/8 L80 tbg. SDFN.

9/25/24: TOH LD 105 jnts 2-7/8 L80 tbg. TIH 82 jnts from derrick and TOH LD the 82 jnts 2-7/8 L80 tbg. Rack and tally 189 jnts 2-7/8 L80 (WS). TIH 20 jnts 2-7/8 L80 tbg. EOT @ 653'. Set pkr. Load hole and PT csg from 653' to surface. PT good. Attempted to PT below pkr and would not hold psi. PU and TIH 60 jnts 2-7/8 L80 tbg. Set pkr @ 2613'. PT above pkr. PT good. Attempted to PT below pkr but would not hold psi. SDFN.

9/26/24: PU TIH 122 jnts 2-7/8 L80 tbg. (total in hole 182 jnts). Tagged CIBP @ 5998'. TOH LD 2 jnts and set pkr @ 5025'. PT CIBP 500 psi for 30 minutes. PT good. TOH 28 jnts and set pkr @ 5025'. PT below good. PT above bad. TOH 32 jnts and set pkr @ 3980'. PT below bad. PT above good. TIH 10 jnts and set pkr @ 4307'. PT above good. PT below bad. TIH 10 jnts and set pkr @ 4633'. PT below good. PT above bad. TOH 2 jnts and set pkr @ 4568'. PT above good. PT below bad. TIH 1 jnt and set pkr @ 4600. PT above bad. PT below good. Holes are between 4633' and 4568'. Attempted to set pkr in between and would pump down csg and circulate up the tbg. SDFN.

9/27/24: TOH. MIRU WLU. RIH tag CIBP @ 5998'. RCBL on the way out. RDMO WLU. SDFWE.

9/30/24: TIH and tagged CIBP @ 5,995'. Spotted 25 sxs of CMT. POOH w 30 stands leaving EOT @4,013'. Reversed out w 35 bbls 10#. WOC to go tag and verify TOC. TIH and tagged TOC @ 5,655'. POOH standing back 91 stands and LD 1 jnt. SDFN.

10/1/24: TIH w pkr RIH w 79 stands from derrick leaving EOT @5,168'. WL RIH and perf @5,600' and 5,400' making two runs. TIH and set pkr @5,422'. Attempted to break circulation pumping 203 bbls 10# down the tbg and neither casing or surface blowed or sucked. Pumped 130 bbls 10# down the casing but neither tbg or surface blowed or sucked. Moved pkr up to 5,411', squeezed 50 sxs down the prfs@ 5,600', moved pkr up to 5,389' and sqzed 10 sxs to top off. POOH w 15 stnds leaving eot @4,411". Reversed out w 38 bbls. WOC. SDFN.

10/2/24: TIH and tagged toc @5,507. POOH and set pkr @5,324' PT to 700 psi holding solid for 10 mins. TIH and set pkr @5,500'. Spotted 20 sxs of cmt bringing ctoc to 5,310'. POOH leaving eot @4,379'. Reversed out w 28 bbls to clean tbg. Pulled up to 4,151 sqzed 50 sxs and displaced w 31 bbls. Pulled up hole leaving eot @3,171'. Reversed out w 23 bbls. SDFN.

10/3/24: Tag TOC @4,223'. POOH leaving EOT @2,714' and set pkr. PT to 700 psi holding solid for 10 mins. Bled off to 0 psi. RU WL. RIH and perf @4,220'. Attempted to establish circulation, pumped 30 bbls w/ a pump rate of .75 bbls/ min 1,300 psi, no returns, switched to pump down surface and pumped 80 bbls 2 bbls /min w 200 psi w no returns, WL RU, RIH and perf @2,250', WL toh and rigged down. Pumped down csg up the tbg breaking circulation w 2 bbls starting w/ a rate of .5 bbls/min 1,000 psi, 12 bbls in to it, jumped up to 1 bbl/min 1,000 psi, stopped pumping after a total of 28 bbls in to it finishing w/ a rate of 1 bbl/min 1,500 psi and started to lose circulation. SDFN.

10/4/24: Pumped 151 bbls 10# down tbg with a rate of 2 bbls/min 800 psi, stopped and csg was blowing and tbg was flowing, switched to pump down cgs, pumped 6 bbls and cough pressure pressuring up to 1,500 psi, bled off, tbg and csg were flowing. RU WL and RIH and perf @4,213 WLM 7' above pre-existing perfs, WL TOH and RD. Pumped down cgs 32 bbls .5 bbls/min 1,500 psi. SDFN.

10/5/24: BD well getting gas and oil returns. Acid trucks spotted in and RU, PT and primed, pumped 2,500 gls 10.1-15% acid, displaced and spotted acid w 36 bbls fw, let it set for 45 mins, flushed acid in to formation w/ 63 bbls fw, started op pumping 0.5 bbl/min 1,217 psi and finishing acid ops pumping

2.5bbls/min 1,509, stopped pumping w/ 1,436 psi in csg and 800 psi tbg. Closed well for 1 hr, after waiting casing had 450 psi and tbg had 100 psi. Pumped 15 bbls fw 2 bbls/min 800 psi csg shut, opened cgs and continued pumping extra 24 bbl/min 400 psi barely getting returns losing 90%. SDFN.

10/6/24: Pumped 431 sxs cmt 101 slurry bbls class c 1.32 yield, displaced w 13.2 bbls fw and pumped 5 extra bbls fw for spacer 210' breaking circulation since the beginning getting weak returns of oil and gas, finished cmt ops with 200 psi. WOC to set and harden. TIH w 6 jnts and tagged w jnt #76 5' out @2,480', pooh and set pkr @1,310'. PT to ,1000 psi taking 1.5 min to bleed down to 0 psi, pumped 10 bbls in to it getting a pump rate of .25 bbls/min w 1,000 psi. POOH to LD and check integrity of pkr. TIH to toc @2,480'. Rigged up pump and pit for cmt ops in the morning.

10/7/24: Pumped 5 bbls fw, spotted 30 sxs class c cmt 1.32 yield, TOH standing back 15 stnds, pumped 12 bbls to clear tbg, LD 11 jnts, PU to 1,000 psi. WOC 4 hrs. PT 500 psi holding pressure for 10 mins. TIH w 15 stnds and tagged toc w jnt #67 10' out @2,181, PU and set pkr @2,093'. WL RIH and perf @2,175'. PU and set pkr @1,114', circulated 130 bbls 10# pumping dye. Pumped 320 sxs of class c 1.32, displaced w/ 6.4 bbls and spacer of 4.3 bbls, (noticed dye 10 bbls in to cmt ops total of 140 bbls pumped). SDFN.

10/8/24: Unset pkr and TIH 2 jnts 2-7/8 L80 tbg and 20' of the third jnts. (total tbg in hole 36 jnts plus 20') TTOC @ 1199'. TOH LD 36 jnts. MIRU WLU RCBL. RDMO. Wait on BLM to approve next step. TIH 27 jnts 2-7/8 L80 tbg and 10' jnt to set pkr @ 900'. MIRU WLU. RIH and perf @ 1149'. Had 500 psi on it and lost it as soon as we perfed. RDMO WLU. Circulated 108 bbls 10# BW @ 1.5 bpm at 1000 psi. Pumped until we got returns @ pit (after 6 bbls pumped) then swapped and pumped 12 bbls dyed spacer. Good returns at pit 1.5 bbls in 1.5 bbls out. Never saw dyed water. SDFN.

10/9/24: TOH LD 6 jnts 2-7/8 L80 tbg and set pkr @ 701'. Sqz 125 sks Class C CMT. (FW mix 18.75 bbls Slurry Vol 29.38 bbls CTOC 760') Displaced w/6 bbls 10# BW. Shut in tbg and surface. WOC. PU 5 jnts 2-7/8 L80 tbg and TIH TTOC @ 817'. TOH LD 6 jnts b2-7/8 L80 tbg total 15 jnts in the hole and 12' sub. Set pkr @ 501'. MIRU WLU. RIH TTOC @ 807 w/WLU moved up and perfed @ 805' w/400 psi on it. Blew out glove and lost psi as soon as we fired. POOH. Sqz CMT to surface. 286 sks Class C CMT until we got good CMT at pit. (FW mix 43 bbls Slurry Vol 67.25 bbls CTOC 600') Displaced w/5.5 bbls 10# BW. Shut well.

10/10/24: Unset pkr and TIH 3 jnts 2-7/8 L80 tbg (total in hole 15 jnts) and TTOC @ 587'. TOH 15 jnts 2-7/8 L80 tbg and LD pkr. RD Work floor and tongs. ND BOP and accumulator. TIH 17 jnts 2-7/8 L80 tbg. EOT @ 585'. Pumped 60 sks Class C CMT (FW mix 10 bbls, Slurry vol 14.1 bbls) to returns at surface. TOH LD 17 jnts 2-7/8 L80 tbg. RD.

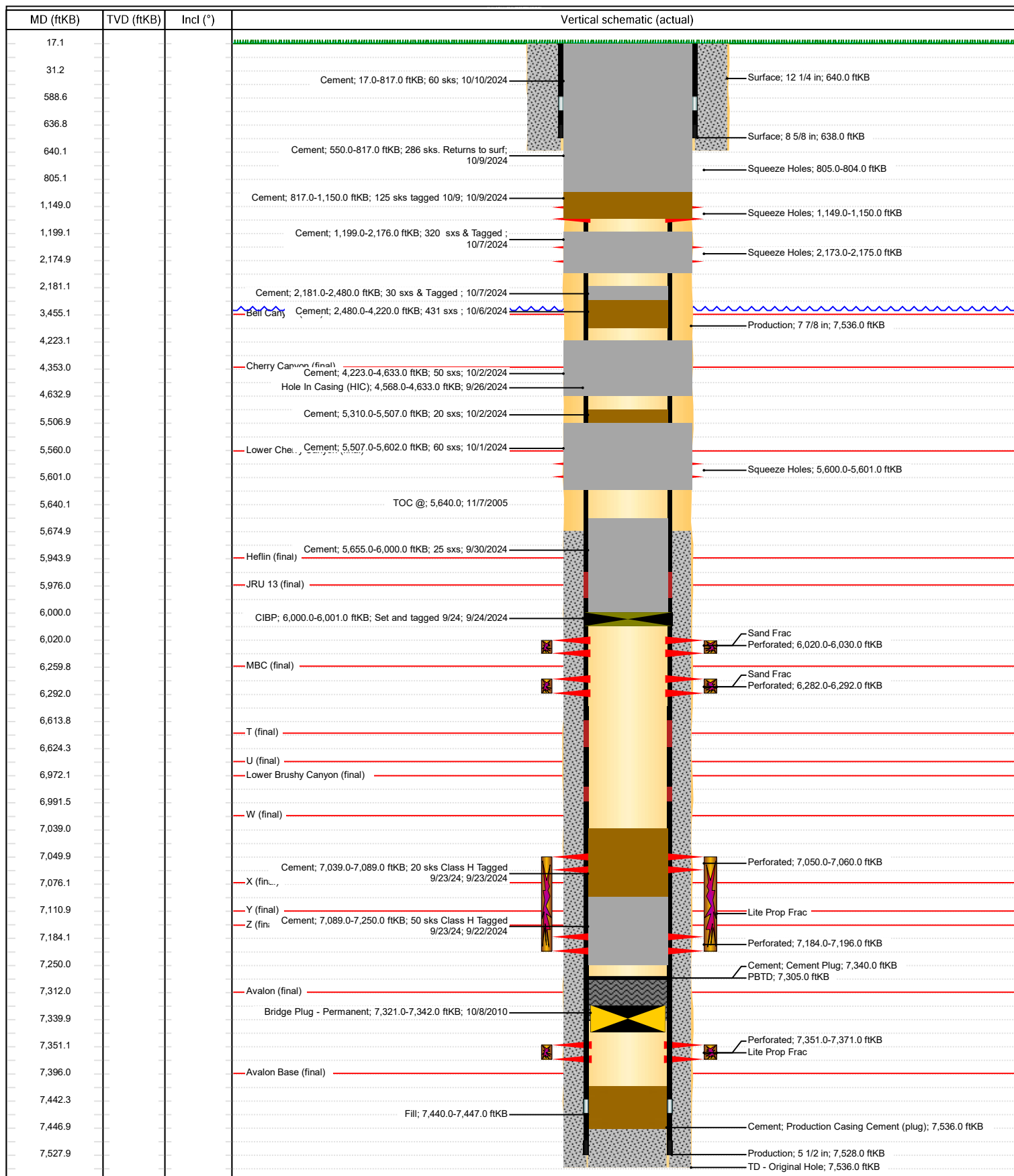
12/3/24: Cut off Wellhead and set DHM.



Schematic - Vertical with Perfs

Well Name: Poker Lake Unit 212

API/UWI 3001533915	SAP Cost Center ID 1138031001	Permit Number	State/Province New Mexico	County Eddy
Surface Location T24S-R30E-S18	Spud Date 10/19/2005 10:00	Original KB Elevation (ft) 3,181.00	Ground Elevation (ft) 3,164.00	KB-Ground Distance (ft) 17.00



Sante Fe Main Office
Phone: (505) 476-3441

General Information
Phone: (505) 629-6116

Online Phone Directory
<https://www.emnrd.nm.gov/oed/contact-us>

State of New Mexico
Energy, Minerals and Natural Resources
Oil Conservation Division
1220 S. St Francis Dr.
Santa Fe, NM 87505

CONDITIONS

Action 415174

CONDITIONS

Operator: XTO PERMIAN OPERATING LLC. 6401 HOLIDAY HILL ROAD MIDLAND, TX 79707	OGRID: 373075
	Action Number: 415174
	Action Type: [C-103] Sub. Plugging (C-103P)

CONDITIONS

Created By	Condition	Condition Date
gcordero	None	1/10/2025