

Submit a Copy To Appropriate District:
Office
District I – (575) 393-6161
1625 N. French Dr., Hobbs, NM 88240
District II – (575) 748-1283
811 S. First St., Artesia, NM 88210
District III – (505) 334-6178
1000 Rio Brazos Rd., Aztec, NM 87410
District IV – (505) 476-3460
1220 S. St. Francis Dr., Santa Fe, NM
87505

State of New Mexico
Energy, Minerals and Natural Resources

Form C-103
Revised July 18, 2013

OIL CONSERVATION DIVISION
1220 South St. Francis Dr.
Santa Fe, NM 87505

WELL API NO. 30-025-11209
5. Indicate Type of Lease STATE <input type="checkbox"/> FEE <input checked="" type="checkbox"/>
6. State Oil & Gas Lease No.
7. Lease Name or Unit Agreement Name Lillie
8. Well Number 2
9. OGRID Number 256073
10. Pool name or Wildcat Fowler; Upper Yeso
4. Well Location Unit Letter D , 697 feet from the North line and 568 feet from the West line Section 23 Township 24S Range 37E NMPM County Lea
11. Elevation (Show whether DR, RKB, RT, GR, etc.) 3252 GL

SUNDRY NOTICES AND REPORTS ON WELLS

(DO NOT USE THIS FORM FOR PROPOSALS TO DRILL OR TO DEEPEN OR PLUG BACK TO A DIFFERENT RESERVOIR. USE "APPLICATION FOR PERMIT" (FORM C-101) FOR SUCH PROPOSALS.)

1. Type of Well: Oil Well ☒ Gas Well ☐ Other

2. Name of Operator

J R Oil Ltd. Co.

3. Address of Operator

PO Box 2975 Hobbs, NM 88241

12. Check Appropriate Box to Indicate Nature of Notice, Report or Other Data

NOTICE OF INTENTION TO:

PERFORM REMEDIAL WORK ☐ PLUG AND ABANDON ☒
TEMPORARILY ABANDON ☐ CHANGE PLANS ☐
PULL OR ALTER CASING ☐ MULTIPLE COMPL ☐
DOWNHOLE COMMINGLE ☐
CLOSED-LOOP SYSTEM ☐
OTHER: ☐

SUBSEQUENT REPORT OF:

REMEDIAL WORK ☐ ALTERING CASING ☐
COMMENCE DRILLING OPNS. ☐ P AND A ☐
CASING/CEMENT JOB ☐
OTHER: ☐

Notify OCD 24 hrs. prior to any work
done. gilbert.cordero@emnrd.nm.gov

13. Describe proposed or completed operations. (Clearly state all pertinent details, and give pertinent dates, including estimated date of starting any proposed work). SEE RULE 19.15.7.14 NMAC. For Multiple Completions: Attach wellbore diagram of proposed completion or recompletion.

See Attached

Spud Date:

04/08/1953

Rig Release Date:

SEE ATTACHED COA's

MUST BE PLUGGED BY 12/4/25

I hereby certify that the information above is true and complete to the best of my knowledge and belief.

SIGNATURE Maren Latimer TITLE Agent DATE 1/6/2025

Type or print name Maren Latimer E-mail address: mlatimer@ravenop.com PHONE: 5756916790

For State Use Only

APPROVED BY: [Signature] TITLE Staff Manager DATE 1/15/25

Conditions of Approval (if any):



Lillie #2

Abandonment Procedure

January 3, 2025

1. MIRU plugging service
2. Clean out well to 6870'
3. RIH and Spot 4 sx cmt on plug at 6870' - WOC & Tag @ 6850' or higher
4. Set CIBP @ 6330' - spot 30 sx cement - WOC & Tag a @ 6150'
5. Spot 100 sx cmt 5645' - WOC & Tag at 5070 or higher - Squeezed perfs
6. Test Casing 500psi/30min - Bubble Test - Log cement bond from PBTD to surface
7. Circ. MLF
8. Spot 25 sx @ 4875' - T Glorieta
9. Spot 55 sx @ 3,780'
10. Spot 25 sx @ 3,242'
11. Spot 50 sx @ 2,565'
12. Perf 388' & circ. 90 sx or more to surface - WOC
13. Cut off well head 3' beneath grade, top off cement, weld AGL marker, and back fill.
14. Remove all underground piping and surface equipment. Remediate surface location per OCD.

Information

Well

Name: Lillie #2

API: 30-025-11209

Location: Unit D, section 23, T 24S, R 37E, 697' FNL, 568' FWL

Lat/long: 32.208168, -103.1404266

Directions: From the intersection of Hwy 18 & Cooper Rd. (between Jal & Eunice) travel east 2.5 miles, at the double yellow cattle guards drive through the southern (right) one, travel east 0.7 miles, turn south (right), and the well is the first on the right, sharing a pad with Lillie #1.

Contacts

Company Man in charge: Bobby Stearns (575) 760-2482

Engineer: Ian Petersen (432) 634-4922

Production Foreman: Josh Latimer (575) 414-9188

Pumper: Charles Cowger (575) 631-7939

State of New Mexico
Energy, Minerals and Natural Resources Department
Oil Conservation Division
Standard Plugging Conditions



This document provides OCD's general plugging conditions of approval. It should be noted that the list below may not cover special plugging programs in unique and unusual cases, and OCD expressly reserves the right to impose additional requirements to the extent dictated by project conditions. The OCD also reserves the right to approve deviations from the below conditions if field conditions warrant a change. A C-103F NOI to P&A must be approved prior to plugging operations. Failure to comply with the conditions attached to a plugging approval may result in a violation of 19.15.5.11 NMAC, which may result in enforcement actions, including but not limited to penalties and a requirement that the well be re-plugged as necessary.

1. Notify OCD office at least 24 hours before beginning work and seek prior approval to implementing any changes to the C-103 NOI to PA.
 - North Contact, Monica Kuehling, 505-320-0243, monica.kuehling@emnrd.nm.gov
 - South Contact, Gilbert Cordero, 575-626-0830, gilbert.cordero@emnrd.nm.gov
2. A Cement Bond Log is required to ensure strata isolation of producing formations, protection of water and correlative rights. A CBL must be run or be on file that can be used to properly evaluate the cement behind the casing.

Note: Logs must be submitted to OCD via OCD permitting. A copy of the log may be emailed to OCD inspector for faster review times, but emailing does not relieve the operators obligation to submit through OCD permitting.

3. Once Plugging operations have commenced, the rig must not rig down until the well is fully plugged without OCD approval. If gap in plugging operations exceeds 30 days, the Operator must file a subsequent sundry of work performed and revised NOI for approval on work remaining. At no time shall the rig be removed from location if it will result in waste or contamination of fresh water.
4. Insure all bradenheads have been exposed, identified and valves are operational prior to rig up.
5. Fluids must be placed between all cement plugs mixed at 25 sacks per 100 bbls of water.
 - North, water or mud laden fluids
 - South, mud laden fluids
6. Closed loop system is to be used for entire plugging operation. Upon completion, contents of steel pits are to be hauled to an OCD permitted disposal facility.
7. Class of cement shall be used in accordance with the below table for depth allowed.

Class	TVD Lower Limit (feet)
Class A/B	6,000
Class I/II	6,000
Class C or III	6,000
Class G and H	8,000
Class D	10,000

Class E	14,000
Class F	16,000

8. After cutting the well head any "top off cement jobs" must remain static for 30 minutes. Any gas bubbles or flow during this 30 minutes shall be reported to the OCD for approval of next steps.
9. Trucking companies being used to haul oilfield waste fluids (Commercial or Private) to a disposal facility shall have an approved OCD C-133 permit.
 - A copy of this permit shall be available in each truck used to haul waste products.
 - It is the responsibility of the Operator and Contractor to verify that this permit is in place prior to performing work.
 - Drivers shall be able to produce a copy upon request of an OCD Compliance Officer.
10. Filing a [C-103] Sub. Plugging (C-103P) will serve as notification that the well has been plugged.
11. A [C-103] Sub. Release After P&A (C-103Q) shall be filed no later than a year after plugging and a site inspection by OCD Compliance officer to determine if the location is satisfactorily cleaned, all equipment, electric poles and trash has been removed to meet OCD standards before bonding can be released.
12. Produced water or brine-based fluids **may not** be used during any part of plugging operations without **prior OCD approval**.
13. Cementing;
 - All cement plugs will be neat cement and a minimum of 100' in length. 50' of calculated cement excess required for inside casing plugs and 100% calculated cement excess required on outside casing plugs.
 - If cement does not exist between or behind the casing strings at recommended formation depths, the casing perforations will be shot at 50' below the formation top and the cement retainer shall be set no more than 50' from the perforations.
 - WOC (Wait on Cement) time will be:
 - 4 hours for accelerated (calcium chloride) cement.
 - 6 hours on regular cement.
 - Operator must tag all cement plugs unless it meets the below condition.
 - The operator has a passing pressure test for the casing annulus and the plug is only an inside plug.
 - If perforations are made operator must tag all plugs using the work string to tag unless given approval to tag with wireline by the correct contact from COA #1 of this document.
 - This includes plugs pumped underneath a cement retainer to ensure retainer seats properly after cement is pumped.
 - Cement can only be bull-headed with specific prior approval.
 - Squeeze pressures are not to exceed the exposed formations frac gradient or the burst pressure of the casing.
14. A cement plug is required to be set from 50' below to 50' above (straddling) formation tops, casing shoes, casing stubs, any attempted casing cut offs, anywhere the casing is perforated, DV tools.
 - Perforation/Formation top plug. (When there is less than 100ft between the top perforation to the formation top.) These plugs are required to be started no greater than

50ft from the top perforation. However, the plug should be set below the formation top or as close to the formation top as possible for the maximum isolation between the formations. The plug is required to be a 100ft cement plug plus excess.

- Perforation Plug when a formation top is not included. These plugs are required to be started within 50ft of the top perforation. The plug is required to be a 100ft cement plug plus excess.
- Cement caps on top of bridge plugs or cement retainers for perforation plugs, that are not straddling a formation top, may be set using a bailer with a minimum of 35' of cement in lieu of the 100' plug. The bridge plug or retainer must be set within 50ft of the perforations.
- Perforations are required below the surface casing shoe if cement does not exist behind the casing, a 30-minute minimum wait time will be required immediately after perforating to determine if gas and/or water flows are present. If flow is present, the well will be shut-in for a minimum of one hour and the pressure recorded. If gas is detected contact the OCD office for directions.

15. No more than 3000 feet is allowed between cement plugs in cased hole and no more than 2000 feet is allowed in open hole.

16. Formation Tops to be isolated with cement plugs, but not limited to are:

- Northwest See Figure A
- South (Artesia) See Figure B
- Potash See Figure C
 - In the R-111-P (Or as subsequently revised) Area a solid cement plug must be set across the salt section. Fluid used to mix the cement shall be saturated with the salts that are common to the section penetrated and in suitable proportions, not more than 3% calcium chloride (by weight of cement) will be considered the desired mixture whenever possible, woe 4 hours and tag, this plug will be 50' below the bottom and 50' above the top of the Formation.
- South (Hobbs) See Figure D1 and D2
- Areas not provided above will need to be reviewed with the OCD on a case by case basis.

17. Markers

- Dry hole marker requirements 19.15.25.10.

The operator shall mark the exact location of plugged and abandoned wells with a steel marker not less than four inches in diameter set in cement and extending at least four feet above mean ground level. The marker must include the below information:

 1. Operator name
 2. Lease name and well number
 3. API number
 4. Unit letter
 5. Section, Township and Range
- AGRICULTURE (Below grade markers)

In Agricultural areas a request can be made for a below ground marker. For a below ground marker the operator must file their request on a C-103 notice of intent, and it must include the following;

 - A) Aerial photo showing the agricultural area
 - B) Request from the landowner for the below ground marker.

C) Subsequent plugging report for a well using a below ground marker must have an updated C-102 signed by a certified surveyor for SHL.

Note: A below ground marker is required with all pertinent information mentioned above on a plate, set 3' below ground level, a picture of the plate will be supplied to OCD for record, the exact location of the marker (longitude and latitude by GPS) will be provided to OCD. OCD requires a current survey to verify the location of the below ground marker, however OCD will accept a GPS coordinate that were taken with a GPS that has an accuracy of within 15 feet.

18. If work has not commenced within 1 year of the approval of this procedure, the approval is automatically expired. After 1 year a new [C-103] NOI Plugging (C-103F) must be submitted and approved prior to work.

Figure A

North Formations to be isolated with cement plugs are:

- San Jose
- Nacimiento
- Ojo Alamo
- Kirtland
- Fruitland
- Picture Cliffs
- Chacra (if below the Chacra Line)
- Mesa Verde Group
- Mancos
- Gallup
- Basin Dakota (plugged at the top of the Graneros)
- Deeper formations will be reviewed on a case-by-case basis

Figure B

South (Artesia) Formations to be isolated with cement plugs are:

- Fusselman
- Montoya
- Devonian
- Morrow
- Strawn
- Atoka
- Permo-Penn
- Wolfcamp
- Bone Springs
- Delaware , in certain areas where the Delaware is subdivided into;
 - 1. Bell Canyon
 - 2. Cherry Canyon
 - 3. Brushy Canyon
- Any salt sections
- Abo
- Yeso
- Glorieta
- San Andres
- Greyburg
- Queen
- Yates

Figure D1 and D2

South (Hobbs) Formations to be isolated with cement plugs are:

The plugging requirements in the Hobbs Area are based on the well location within specific areas of the Area (See Figure D1). The Formations in the Hobbs Area to be isolated with cement plugs are (see Figure D2)

Figure D1 Map

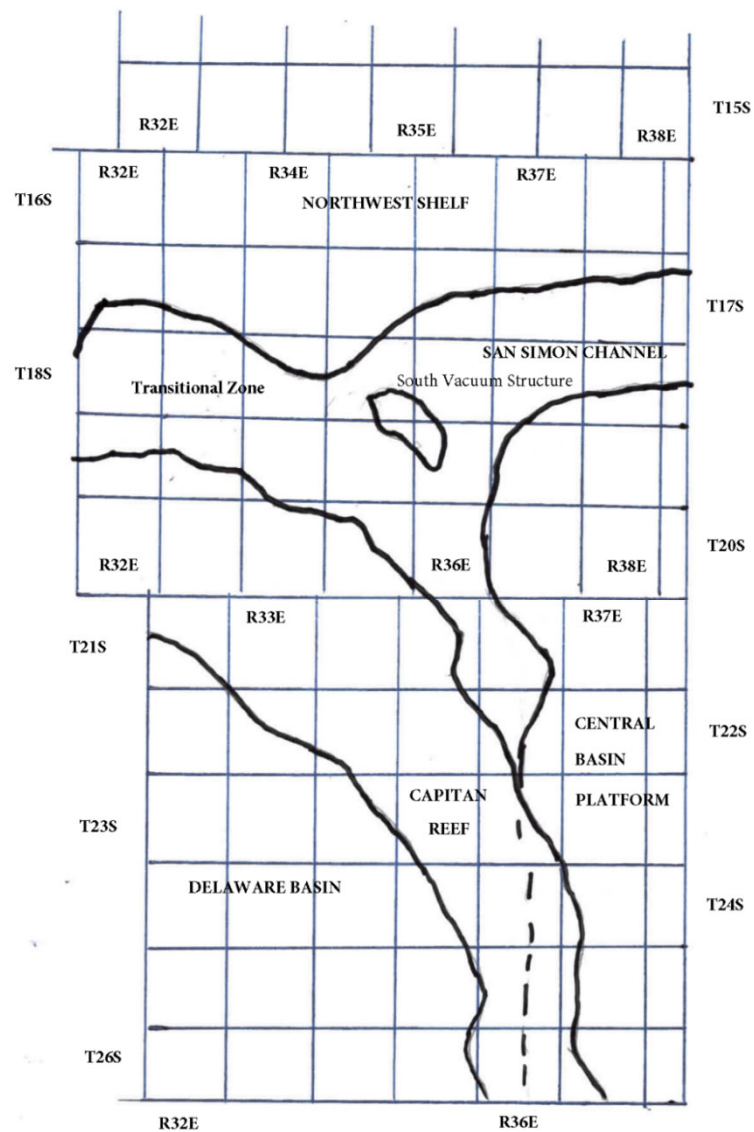


Figure D2 Formation Table

100' Plug to isolate upper and lower fresh water zones (typically 250' to 350')						
Northwest Shelf	Captan Reef Area	Transition Zone	San Simon Channel	South Vacuum Structure	Delaware Basin	Central Basin Platform
Granit Wash (Detrital basement material and fractured pre-Cambrian basement rock)	Siluro-Devonian	Morrow	Siluro-Devonian	Ellenburger	Siluro-Devonian	Granit Wash (Detrital basement material, fractured pre-Cambrian basement rock and fracture Mafic Volcanic intrusives).
Montoya	Mississippian	Atoka	Morrow	McKee	Morrow	Ellenburger
Fusselman	Morrow	Strawn	Wolfcamp	Siluro-Devonian	Atoka	Connell
Woodford	Atoka	Cisco	Abo Reef	Woodford	Strawn	Waddell
Siluro-Devonian	Strawn	Pennsylvanian	Bone Spring	Mississippian	Pennsylvanian	McKee
Chester	Pennsylvanian	Wolfcamp	Delaware	Barnett Shale	Lower Wolfcamp	Simpson Group
Austin	Wolfcamp	Bone Spring	San Andres	Morrow	Upper Wolfcamp	Montoya
Mississippian	Abo Reef, if present	Delaware	Queen	Atoka	Wolfcamp	Fusselman
Morrow	Abo, if present	San Andres	Yates	Strawn	Third Bone Spring Sand (Top of Wolfbone)	Silurian
Atoka	Queen, if present	Grayburg-San Andres	Base of Salt	Canyon	First Bone Spring Sand (Top of Lower Bone Spring)	Devonian
Lower Pennsylvanian	Bone Spring	Queen	Rustler	Pennsylvanian	Bone Spring	Strawn
Cisco-Canyon	Delaware	Seven Rivers		Blinbry	Brushy Canyon	Pennsylvanian
Pennsylvanian	Base Capitan Reef	Yates		Bone Spring	Delaware (Base of Salt)	Wolfcamp
Bough	Seven Rivers	Base of Salt		San Andres	Rustler	Abo
Wolfcamp	Yates	Rustler		Queen		Abo Reef
Abo	Top Capitan Reef			Base of Salt		Drinkard
Abo Reef, if present	Base of Salt			Rustler		Tubb
Yeso (Township 15 South to Township 17 South)	Rustler					Blinbry
Drinkard or Lower Yeso (Township 15 South to Township 17 South)						Paddock
Tubb (Township 15 South to Township 17 South)						Glorieta
Blinbry (Township 15 South to Township 17 South)						San Andres
Paddock (Township 15 South to Township 17 South)						Grayburg
Glorieta						Grayburg-San Andres
San Andres						Queen
Queen (Township 15 South to Township 17 South)						Seven Rivers
Seven Rivers (Township 15 South to Township 17 South)						Yates
Yates (Township 15 South to Township 17 South)						Base of Salt
Base of Salt						Rustler
Rustler						

EXHIBIT "A"
CASE 9316
ORDER R-111-P

CONSOLIDATED LAND DESCRIPTION OF THE KNOWN POTASH
LEASING AREA, AS OF FEBRUARY 3, 1988

EDDY COUNTY, NEW MEXICO

TOWNSHIP 18 SOUTH, RANGE 30 EAST, NMPM

Section 10: SE/4 SE/4
Section 11: S/2 SW/4
Section 13: W/2 SW/4 and SE/4 SW/4
Section 14: W/2 NE/4, NW/4 and S/2
Section 15: E/2 NE/4, SE/4 SW/4 and SE/4
Section 22: N/2, N/2 SW/4, SE/4 SW/4 and SE/4
Section 23: All
Section 24: N/2 NW/4, SW/4 NW/4 and NW/4 SW/4
Section 26: NE/4, N/2 NW/4 and SE/4 NW/4
Section 27: N/2 NE/4 and NE/4 NW/4

TOWNSHIP 19 SOUTH, RANGE 29 EAST, NMPM

Section 11: SE/4 SE/4
Section 12: SE/4 NE/4 and S/2
Section 13: All
Section 14: NE/4, SE/4 NW/4 and S/2
Section 15: SE/4 SE/4
Section 22: NE/4, E/2 W/2 and SE/4
Section 23: All
Section 24: All
Section 25: NW/4 NW/4
Section 26: N/2 NE/4 AND NW/4
Section 27: NE/4 AND E/2 NW/4

TOWNSHIP 19 SOUTH, RANGE 30 EAST, NMPM

Section 2: SW/4
Section 3: W/2 SW/4, SE/4 SW/4, S/2 SE/4 and
NE/4 SE/4
Section 4: Lots 3 and 4. SW/4 NE/4, S/2 NW/4
and S/2
Section 5: Lots 1, 2. and 3, S/2 NE/4,
S/2 NW/4 and S/2
Section 6: S/2 SE/4 and NE/4 SE/4
Sections 7 to 10 inclusive
Section 11: S/2 NE/4, NW/4 NW/4 and S/2
Section 12: NE/4, S/2 NW/4 and S/2
Section 13: NE/4, W/2, N/2 SE/4 and SW/4 SE/4
Sections 14 to 18 inclusive
Section 19: Lots 1, 2, and 3, NE/4, E/2 NW/4,
NE/4 SW/4, E/2 SE/4 and
NW/4 SE/4
Sections 20 to 23 inclusive

Section 24: NW/4. NW/4 SW/4 and S/2 SW/4

Section 25: NW/4 NW/4
 Section 26: NE/4 NE/4, W/2 NE/4, W/2, W/2 SE/4
 and SE/4 SE/4
 Section 27: All
 Section 28: All
 Section 29: E/2, E/2 NW/4 and NW/4 NW/4
 Section 32: E/2 and SE/4 SW/4
 Section 33 to 35 inclusive
 Section 36: NW/4 NW/4, S/2 NW/4 and S/2

TOWNSHIP 19 SOUTH, RANGE 31 EAST, NMPM

Section 7: Lots 1, 2, and 3 and E/2 NW/4
 Section 18: Lots 1, 2, and 3 and SW/4 NE/4,
 E/2 NW/4 and NE/4 SW/4
 Section 31: Lot 4
 Section 34: SE/4 SE/4
 Section 35: S/2 SW/4 and SW/4 SE/4
 Section 36: S/2 SE/4

LEA COUNTY, NEW MEXICO

TOWNSHIP 19 SOUTH, RANGE 32 EAST, NMPM

Section 31: Lot 4
 Section 33: Lots 1 to 4 inclusive and N/2 S/2
 Section 34: Lots 1 to 4 inclusive and N/2 S/2
 Section 35: Lots 1 to 4 inclusive and N/2 S/2
 Section 36: Lots 1 to 4 inclusive, SE/4 NE/4,
 NW/4 SW/4 and NE/4 SE/4

TOWNSHIP 19 SOUTH, RANGE 33 EAST, NMPM

Section 22: SE/4 NE/4, E/2 SW/4 and SE/4
 Section 23: S/2 NW/4, SW/4, W/2 SE/4 and
 SE/4 SE/4
 Section 25: SW/4 NW/4, W/2 SW/4 and SE/4 SW/4
 Section 26: All
 Section 27: All
 Section 28: S/2 SE/4 and NE/4 SE/4
 Section 30: Lots 2 to 4 inclusive, S/2 NE/4,
 SE/4 NW/4, E/2 SW/4 and SE/4
 Section 31: All
 Section 32: NE/4, S/2 NW/4 and S/2
 Sections 33 to 35 inclusive
 Section 36: W/2 NE/4, SE/4 NE/4, NW/4 and S/2

TOWNSHIP 19 SOUTH, RANGE 34 EAST, NMPM

Section 31: Lots 3 and 4

EDDY COUNTY, NEW MEXICO

TOWNSHIP 20 SOUTH, RANGE 29 EAST, NMPM

Section 1: SE/4 NE/4 and E/2 SE/4
 Section 13: SW/4 NW/4, W/2 SW/4 AND SE/4 SW/4
 Section 14: NW/4 NE/4, S/2 NE/4, NW/4 and S/2
 Section 15: E/2 E/2, SE/4 SW/4 and W/2 SE/4
 Section 22: E/2 and E/2 NW/4
 Section 23: All
 Section 24: SW/4 NE/4, W/2, W/2 SE/4
 and SE/4 SE/4
 Section 25: N/2, SW/4, W/2 SE/4 and NE/4 SE/4
 Section 26: All
 Section 27: E/2
 Section 34: NE/4
 Section 35: N/2
 Section 36: W/2 NE/4 AND NW/4

TOWNSHIP 20 SOUTH, RANGE 30 EAST, NMPM

Sections 1 to 4 inclusive
 Section 5: Lots 1 to 3 inclusive, S/2 N/2
 and S/2
 Section 6 Lots 5, 6, and 7, S/2 NE/4, E/2 SW/4
 and SE/4
 Section 7 Lots 1 and 2. E/2 and E/2 NW/4
 Sections 8 to 17 inclusive
 Section 18 E/2
 Section 19 E/2 and SE/4 SW/4
 Sections 20 to 29 inclusive
 Section 30: Lots 1 to 3 inclusive, E/2 and
 E/2 W/2
 Section 31 E/4 and E/2 SE/4
 Sections 32 to 35 inclusive

TOWNSHIP 20 SOUTH, RANGE 31 EAST, NMPM

Section 1 Lots 1 to 3 inclusive, S/2 N/2
 and S/2
 Section 2: All
 Section 3: Lots 1 and 2, S/2 NE/4 and SE/4
 Section 6: Lots 4 to 7 inclusive, SE/4 NW/4,
 E/2 SW/4, W/2 SE/4 and
 SE/4 SE/4
 Section 7: All
 Section 8: S/2 N/2 and S/2
 Section 9: S/2 NW/4, SW/4, W/2 SE/4 and SE/4 SE/4
 Section 10: E/2 and SW/4
 Section 11 to 36 inclusive

LEA COUNTY, NEW MEXICO

TOWNSHIP 20 SOUTH, RANGE 32 EAST, NMPM

Sections 1 to 4 inclusive

Section 5: S/2 SE/4

Section 6: Lots 4 to 7 inclusive, SE/4 NW/4,
E/2 SW/4 and SW/4 SE/4

Sections 7 to 36 inclusive

TOWNSHIP 20 SOUTH, RANGE 33 EAST, NMPM

Sections 1 to 36 inclusive

TOWNSHIP 20 SOUTH, RANGE 34 EAST, NMPM

Section 6: Lots 3 to 7 inclusive, SE/4 NE/4,
E/2SW/4, W/2 SE/4 AND
SE/4 SE/4

Section 7: All

Section 8: SW/4, S/2 NW/4, W/2 SE/4 and
SE/4 SE/4

Section 16: W/2 NW/4, SE/4 NW/4, SW/4 and
S/2 SE/4

Sections 17 to 21 inclusive

Section 22: N/2 NW/4, SW/4 NW/4, W/2 SE/4,
and SE/4 SE/4

Section 26: SW/4, W/2 SE/4 and SE/4 SE/4

Sections 27 to 35 inclusive

Section 36: SW/4 NW/4 and W/2 SW/4

EDDY COUNTY, NEW MEXICO

TOWNSHIP 21 SOUTH, RANGE 29 EAST, NMPM

Sections 1 to 3 inclusive

Section 4: Lots 1 through 16, NE/4 SW/4 and
SE/4

Section 5: Lot 1

Section 10: N/2 NE/4, SE/4 NE/4 and SE/4 SE/4

Sections 11 to 14 inclusive

Section 15: E/2 NE/4 and NE/4 SE/4

Section 23: N/2 NE/4

Section 24: E/2, N/2NW/4 and SE/4NW/4

Section 25: NE/4 NE/4 and S/2 SE/4

Section 35: Lots 2 to 4 inclusive, S/2 NE/4,
NE/4 SW/4 and N/2 SE/4

Section 36: Lots 1 to 4 inclusive, NE/4,
E/2 NW/4 AND N/2 S/2

TOWNSHIP 21 SOUTH, RANGE 30 EAST, NMPM

Sections 1 to 36 inclusive

TOWNSHIP 21 SOUTH, RANGE 31 EAST, NMPM
Sections 1 to 36 inclusive**LEA COUNTY, NEW MEXICO****TOWNSHIP 21 SOUTH, RANGE 32 EAST, NMPM**

Sections 1 to 27 inclusive

Section 28: N/2 and N/2 S/2

Sections 29 to 31 inclusive

Section 32: NW/4 NE/4, NW/4 and NW/4 SW/4

Section 34: N/2 NE/4

Section 35: N/2 N/2

Section 36: E/2, N/2 NW/4, SE/4 NW/4 and
NE/4 SW/4**TOWNSHIP 21 SOUTH, RANGE 33 EAST, NMPM**Section 1: Lots 2 to 7 inclusive, Lots 10
to 14 inclusive, N/2 SW/4 and
SW/4 SW/4

Sections 2 to 11 inclusive

Section 12: NW/4 NW/4 and SW/4 SW/4

Section 13: N/2 NW/4, S/2 N/2 and S/2

Sections 14 to 24 inclusive

Section 25: N/2. SW/4 and W/2 SE/4

Sections 26 to 30 inclusive

Section 31: Lots 1 to 4 inclusive, NE/4,
E/2 W/2, N/2 SE/4 and
SW/4 SE/4

Section 32: N/2 and NW/4 SW/4

Section 33: N/2

Section 34: NE/4, N/2 NW/4 and E/2 SE/4

Section 35: All

Section 36: W/2 NE/4, NW/4 and S/2

TOWNSHIP 21 SOUTH, RANGE 34 EAST, NMPM**Section 17:** W/2**Section 18:** AllSection 19: Lots 1 to 4 inclusive, NE/4,
E/2 W/2, N/2 SE/4 and
SW/4 SE/4**Section 20:** NW/4 NW/4

Section 30: Lots 1 and 2 and NE/4 NW/4

Section 31: Lots 3 and 4

EDDY COUNTY, NEW MEXICO**TOWNSHIP 22 SOUTH, RANGE 28 EAST, NMPM**

Section 36: E/2 E/2

TOWNSHIP 22 SOUTH, RANGE 29 EAST, NMPM

Sections 1 and 2 inclusive

Section 3 SE/4 SW/4 and SE/4

Section 9 S/2 NE/4 and S/2

Sections 10 to 16 inclusive

Section 17 S/2 SE/4

Section 19 SE/4 NE/4 and E/2 SE/4

Sections 20 to 28 inclusive

Section 29 N/2 N/2, S/2 NE/4 and SE/4

Section 30 NE/4 NE/4

Section 31 Lots 1 to 4 inclusive, S/2 NE/4,
E/2 W/2 and SE/4

Sections 32 to 36 inclusive

TOWNSHIP 22 SOUTH, RANGE 30 EAST, NMPM

Sections 1 to 36 inclusive

TOWNSHIP 22 SOUTH, RANGE 31 EAST, NMPM

Sections 1 to 11 inclusive

Section 12: NW/4 NE/4, NW/4 and NW/4 SW/4

Section 13: S/2 NW/4 and SW/4

Sections 14 through 23 inclusive

Section 24: W/2

Section 25: NW/4

Section 26: NE/4 AND N/2 NW/4

Sections 27 to 34 inclusive

LEA COUNTY, NEW MEXICO**TOWNSHIP 22 SOUTH, RANGE 32 EAST, NMPM**

Section 1: Lot 1

Section 6: Lots 2 to 7 inclusive and SE/4 NW/4

TOWNSHIP 22 SOUTH, RANGE 33 EAST NMPMSection 1: Lots 1 to 4 inclusive, S/2 N/2 and
N/2 S/2

Section 2: All

Section 3: Lot 1, SE/4 NE/4 and SE/4

Section 6: Lot 4

Section 10: NE/4

Section 11: NW/4 NE/4 AND NW/4

TOWNSHIP 22 SOUTH, RANGE 34 EAST NMPM

Section 6: Lots 4 to 6 inclusive

EDDY COUNTY, NEW MEXICO

TOWNSHIP 23 SOUTH, RANGE 28 EAST, NMPM

Section 1: Lot 1

TOWNSHIP 23 SOUTH, RANGE 29 EAST, NMPM

Sections 1 to 5 inclusive

Section 6: Lots 1 to 6 inclusive, S/2 NE/4,
SE/4 NW/4, E/2 SW/4 and SE/4

Section 7: NE/4 and NE/4 NW/4

Section 8: N/2, N/2 SW/4, SE/4 SW/4 and SE/4

Sections 9 to 16 inclusive

Section 17: NE/4 and E/2 SE/4

Sections 21 to 23 inclusive

Section 24: N/2, SW/4 and N/2 SE/4

Section 25: W/2 NW/4 and NW/4 SW/4

Section 26: All

Section 27: All

Section 28: N/2, N/2 SW/4, SE/4 SW/4 and SE/4

Section 33: N/2 NE/4 and NE/4 NW/4

Section 34: NE/4, E/2 NW/4, NW/4 NW/4,
NE/4 SW/4 and SE/4

Section 35: All

Section 36: W/2 NE/4, NW/4 and N/2 SW/4

TOWNSHIP 23 SOUTH, RANGE 30 EAST, NMPM

Sections 1 to 18 inclusive

Section 19: N/2, N/2 SW/4, SE/4 SW/4 and SE/4

Section 20: All

Section 21: All

Section 22: N/2, S/2 SW/4, N/2 S/2 and SE/4 SE/4

Sections 23 to 25 inclusive

Section 26: E/2, SE/4 NW/4 and SW/4

Section 27: N/2 NW/4, SW/4 NW/4, SE/4 SW/4,
S/2 SE/4 and NE/4 SE/4

Section 28: N/2 and SW/4 Section 29 N/2 and SE/4

Section 30: N/2 NE/4

Section 32: N/2 NE/4

Section 33: SE/4 NE/4, N/2 NW/4, NE/4 SE/4
and S/2 SE/4

Sections 34 to 36 inclusive

TOWNSHIP 23 SOUTH, RANGE 31 EAST, NMPM**Section 2:** Lot 4, SW/4 NW/4 and W/2 SE/4

Sections 3 to 7 inclusive

Section 8: NE/4 NE/4, W/2 NE/4 and W/2

Section 9: N/2 N/2

Section 10: NW/4 NW/4 and SE/4 SE/4

Section 11: S/2 NE/4, S/2 SW/4 and SE/4

Section 12: SW/4 NW/4 and SW/4
Section 13: SW/4 **NE/4**, W/2 and W/2 SE/4
Section 14: All
Section 15: E/2, SE/4 NW/4 and **SW/4**
Section 16: SW/4 and S/2 SE/4
Section 17: NW/4 and S/2
Sections 18 to 23 inclusive
Section 24: W/2 NE/4 and W/2
Section 25: W/2 NE/4, NW/4, N/2 SW/4 and
NW/4 SE/4
Section 26 to 34 inclusive
Section 35: N/2 NW/4 and SW/4 NW/4

TOWNSHIP 24 SOUTH, RANGE 29 EAST, NMPM

Section 2: Lots 2 to 4 inclusive
Section 3: Lot 1

TOWNSHIP 24 SOUTH, RANGE 30 EAST, NMPM

Section 1: Lots 1 to 4 inclusive, S/2 N/2,
SW/4 and NW/4 SE/4
Section 2: All
Section 3: All
Section 4: Lots 1 and 2, S/2 NE/4, SE/4 NW/4,
SW/4 SW/4, E/2 SW/4 and SE/4
Section 9: N/2, N/2 SW/4, SE/4 SW/4 and SE/4
Section 10: All
Section 11: All
Section 12: W/2 NW/4 and NW/4 SW/4
Section 14: W/2 NE/4 and **NW/4**
Section 15: NE/4 and N/2 NW/4

TOWNSHIP 24 SOUTH, RANGE 31 EAST, NMPM

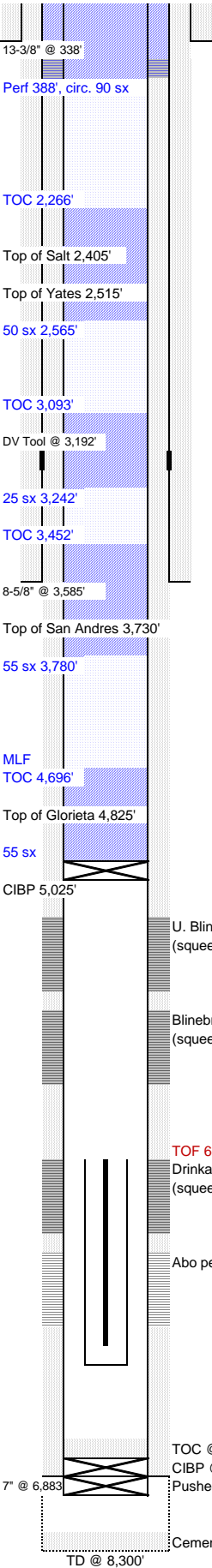
Section 3: Lots 2 to 4 inclusive, SW/4 NE/4,
S/2 NW/4, SW/4 and W/2 SE/4
Section 4: All
Section 5: Lots 1 to 4 inclusive, S/2 N/2,
N/2 S/2 and SE/4 SE/4
Section 6: Lots 1 to 6 inclusive, S/2 NE/4,
SE/4 NW/4, NE/4 SW/4 and
N/2 SE/4
Section 9: E/2 and NW/4
Section 10: W/2 NE/4 and W/2
Section 35: Lots 1 to 4 inclusive, S/2 N/2 and
N/2 S/2
Section 36: Lots 1 and 2, SW/4 NW/4 and N/2 SW/4

TOWNSHIP 25 SOUTH, RANGE 31 EAST, NMPM

Section 1: Lots 3 and 4 and S/2 NW/4
Section 2: Lots 1 to 4 inclusive and S/2 N/2

JR Oil Ltd.

Lillie #2 PROPOSED



WELL NAME: Lillie #2				FORMATION: Abo				KB: 11.0				
API NO: 30-025-11209				FIELD: Fowler				PBTD: 6,870				
SPUD DATE: April 8, 1953				COUNTY: Lea				TD: 8,300				
CASING									CEMENT & HOLE DATA			
	joints	OD	lb/ft	grade	ID (in)	drift (in)	top	bottom	bit size	depth	sacks	TOC
Surface	10	13 3/8	48.00	H-40	12.715	12.559	11'	338'	18, 17-1/4		385	circ.
Intermediate (DV Tool)	82	8 5/8	28, 32	J-55	8.017	7.796	11'	3,192'	11		2,250	circ.
Production	167	7	23, 26	N-80	6.366	6.151	3192'	3,585'	7 7/8		125	
							11'	6,883'			350	167' (calc.)
History:							PERFORATIONS					
4/8/1953 Spud by Gulf Oil Corp., DST @ 6,200' - 300', 81,75' - 301', 8,302' - 91'							top	bottom	zone	status	tfl shots	date
6/23/1953 Spot 60 sx cement 8,300' - 100', spot 40 sx cement 6,800' - 632', whipstock & drill deviated hole to 213.51' West & 10.53' North @ 8,289' MD							5,130'	5,334'	U. Blinebry	squeezed		01/21/72
8/23/1953 Set 7", cement, drill out OH to 8,300', DST 7,980' - 8,020', 8,020' - 61', 8,197' - 263', 8,255' - 300'							5,386'	5,596'	Blinebry	squeezed		01/17/66
9/24/1953 Perf Drinkard, CIBP @ 6,400', 2 sx cement, acidize w/ 4,500 gal 15% NE, TR 2, TP 1,750 - 1,350, swab, plug back w/ CalSel & Hydromite 6,340' - 285'							6,210'	6,320'	Drinkard	squeezed		09/24/53
11/4/1953 IP (when drilled out?) 557 BOPD, 0 BWPD, API 37.5							6,342'	6,449'	Abo	active	26	02/01/96
1/17/1966 CIBP @ 6,180' w/ 2 sx cement, perf Bilinebry, spot 500 gal 15% NE, soak ON, frac 32.25k# 20/40 sand in 33.5k gal gel crude w/ BS, ATR 28.8, MTP 3,100, 10" SIP 1,800, flow 163 BOPD, 384 MCFD, 0 BWPD												
1/21/1972 Spot 750 gal 15% NE, perf U. Blinebry, frac new perfs only 2k gal 15% NE acid & 35k gal gel water w/ 0-2 ppa sand, ATR 27.7, ATP 3,200, swab, commingle w/ Blinebry												
1/8/1985 Tag fill @ 5,424', wash over scale & fish (?) 5,429' - 680', RIH tbg to 5,750', POP, IP 9 BOPD, 164 MCFD, 8 BWPD												
2/22/1996 Sqz Blinebry perfs 371 sx cement, drill, test sqz 250 psi, held 15 min., drill CIBP & cement, fish & mill junk 6,084' - 391', squeeze Drinkard 55 sx, test sqz 250 psi, held 15 min., drill CIBP & push to 6,909', set CIBP @ 6,880', dump 2 sx cement, perf Abo, acidize 200 gal 15% HCL NEFE, swab & flow, IP 69 BOPD, 23 MCFD, 39 BWPD, API 37.5							TUBING (none)					
11/28/2012 Last pull, no details								OD (in)	ID (in)	joints	length (ft)	depth (ft)
7/29/2022 Pump stuck in prffn, work, hot water csg & tbg, att. RHBO, 3/4 body break 247 RFS due to SRB & under-deposit corrosion, tbg already parted 182 JFS, twisted, tag fish 5,682', recover 12.5 jts, coming out in pieces, left in hole (7) jts, IPC, SN, PS, BPMA, tag fish 6,200', pump biocide, align pumping unit												
12/15/2022 Long stroke & lower												
9/24/2024 Mod prffn, start hot water rods & tbg, csg flowing, then well head flowing, SD, tbg vac, csg flow, shut csg, pump 54 bbls kill, held 500#, bleed down, while 250# on 7", 150# on 8-5/8, BD, 13-3/8 0#, finish BD 7", POOH rods & pump, hole in IPC, MA pitted, Test tbg 4k, all held, rplc (3) collars, dump bio & CI, RTP							TOP OF FISH					
10/9/2024 LD rods, trip bit & scraper to 5,695', RBP wouldn't hold between 5,086' and 5,026', csg held 1,000# from 5,026' to 25', csg head seal or flange leaks, set CIBP @ 5,025', test plug, held 500#, well TA'd							(8) jts, SN, perf sub, BPMA					
							RODS (none)					
								OD (in)	grade	rods	length (ft)	depth (ft)

Sante Fe Main Office
Phone: (505) 476-3441

General Information
Phone: (505) 629-6116

Online Phone Directory
<https://www.emnrd.nm.gov/oecd/contact-us>

State of New Mexico
Energy, Minerals and Natural Resources
Oil Conservation Division
1220 S. St Francis Dr.
Santa Fe, NM 87505

CONDITIONS

Action 417185

CONDITIONS

Operator: J R OIL, LTD. CO. P.O. Box 53657 Lubbock, TX 79453	OGRID: 256073
	Action Number: 417185
	Action Type: [C-103] NOI Plug & Abandon (C-103F)

CONDITIONS

Created By	Condition	Condition Date
gcordero	Adhere to current Plug & Abandon (P&A) Conditions Of Approvals (COA).	1/15/2025
gcordero	A Cement Bond Log (CBL) is required to be submitted to electronic permitting.	1/15/2025
gcordero	Submit Cement Bond Logs (CBL) prior to submittal of C-103P.	1/15/2025