

Well Name: NEBU	Well Location: T31N / R8W / SEC 25 / SWNE / 36.872088 / -107.624263	County or Parish/State: SAN JUAN / NM
Well Number: 41E	Type of Well: CONVENTIONAL GAS WELL	Allottee or Tribe Name:
Lease Number: NMSF079082	Unit or CA Name: NEBU--DK	Unit or CA Number: NMNM78402C
US Well Number: 3004533941	Operator: SIMCOE LLC	

Notice of Intent

Sundry ID: 2830739

Type of Submission: Notice of Intent	Type of Action: Temporary Abandonment
Date Sundry Submitted: 01/09/2025	Time Sundry Submitted: 10:50
Date proposed operation will begin: 04/15/2025	

Procedure Description: Simcoe requests permission to temporarily abandon the NEBU 41E well. Simcoe has determined that, based on its past production history, performing well intervention on this well is not currently economic. This well has been identified as a candidate for a future Fruitland Coal completion.

Surface Disturbance

Is any additional surface disturbance proposed?: No

NOI Attachments

Procedure Description

- NEBU_41E_WBD_TA_1.8.25_20250109105041.pdf
- NEBU_041E_TA_Procedure_20250109105041.pdf
- NEBU_41E_WBD_1.8.25_20250109105041.pdf

Well Name: NEBU	Well Location: T31N / R8W / SEC 25 / SWNE / 36.872088 / -107.624263	County or Parish/State: SAN JUAN / NM
Well Number: 41E	Type of Well: CONVENTIONAL GAS WELL	Allottee or Tribe Name:
Lease Number: NMSF079082	Unit or CA Name: NEBU--DK	Unit or CA Number: NMNM78402C
US Well Number: 3004533941	Operator: SIMCOE LLC	

Conditions of Approval

Specialist Review

NEBU_41E_ID_2830739_TA_COAs_MHK_01.10.2025_20250110131735.pdf

Operator

I certify that the foregoing is true and correct. Title 18 U.S.C. Section 1001 and Title 43 U.S.C. Section 1212, make it a crime for any person knowingly and willfully to make to any department or agency of the United States any false, fictitious or fraudulent statements or representations as to any matter within its jurisdiction. Electronic submission of Sundry Notices through this system satisfies regulations requiring a

Operator Electronic Signature: CHRISTY KOST

Signed on: JAN 09, 2025 10:50 AM

Name: SIMCOE LLC

Title: Permitting Agent

Street Address: 1199 MAIN AVE STE 101

City: DURANGO State: CO

Phone: (719) 251-7733

Email address: CHRISTY.KOST@IKAVENERGY.COM

Field

Representative Name:

Street Address:

City: State: Zip:

Phone:

Email address:

BLM Point of Contact

BLM POC Name: MATTHEW H KADE

BLM POC Title: Petroleum Engineer

BLM POC Phone: 5055647736

BLM POC Email Address: MKADE@BLM.GOV

Disposition: Approved

Disposition Date: 01/10/2025

Signature: Matthew Kade

NEBU 041E
 DK
 API #: 30-045-33941
 G-25-31N-08W
 San Juan, NM

Planned Temporary Abandonment

GL: 6400'

San Jose Surface

Ojo Alamo Formation 2213' TVD

Kirtland Formation 2322' TVD

Fruitland Formation 2872' TVD

Pictured Cliffs Formation 3328' TVD

Cliffhouse Formation 5262' TVD

Menefee Formation 5314' TVD

Point Lookout Formation 5612' TVD

Mancos Formation 6003' TVD

Gallup Formation 6949' TVD

Mancos - Greenhorn 7639' TVD

Mancos - Graneros 7688' TVD

Dakota Formation 7811' TVD

9-5/8" 32.3#H-40 @ 276'
 12-1/4" hole
 200 sks cmt
 TOC @ surf.

1290' MD

7" 23# J-55 @ 3746'
 8-3/4" hole
 625 sks cmt
 TOC @ surf.

4-1/2" 11.6# J-55 @ 8177' MD
 6-1/4" hole
 485 sks cmt
 TOC @ 1290' (bond log)

2-3/8" 4.7# J-55, 8RD @ 8133' MD (258 jts)
 1.780" ID F-Nipple @ 8101' MD

CIBP set @ 8000' MD

8043' MD

8154' MD

PBTD: 7955' TVD, 8169' MD
 TD: 7968' TVD, 8182' MD

Procedure - Temporary Abandonment

NEBU #041E

(G) Sec 25, T31N, R8W

San Juan County

30-045-33941

MIRU service unit.

Spool out cap string if present. Pull production tubing and make up 3-1/2" casing scraper.

TIH 3-1/2" casing scraper to bridge plug set 8050' MD.

RIH 3-1/2" cast iron bridge plug and set at 8000' MD (43' above top perf).

Top off casing with 2% KCl w/packer fluid supplied by Western Chemical.

Pressure test casing to 500 psi for 30 min with rig pump. Pressure shall not decrease more than 50 psi over the 30 min period

Open casing valves to check for flow or pressure change.

Test shall be recorded using a chart recorder with a maximum two hour clock and 1000 pound spring, calibrated within six months prior to MIT of casing

Submit chart, C-103, and wellbore diagram showing well details and plug set depth.

Air gap and blind flange production flow lines.

After a period not to exceed 5 years after the temporary abandonment has been completed, a workover rig will remove the cast iron bridge plug and monitor pressure buildup of the well for a two week period to determine if the well will return to a production status. If the decision is made to not produce the well, a request for plugging and abandonment will be submitted.

If the decision is made to produce the well, all necessary flow and production lines will be reinstalled for a flow ready status up to and including any removed flowmeters and well ties. Surface facilities will be placed for production purposes.

NERU 041E
DK
API #: 30-045-33941
G-25-31N-08W
San Juan, NM

Current Wellbore

GL: 6400'

San Jose Surface

Ojo Alamo Formation 2213' TVD

Kirtland Formation 2322' TVD

Fruitland Formation 2872' TVD

Pictured Cliffs Formation 3328' TVD

Cliffhouse Formation 5262' TVD

Menefee Formation 5314' TVD

Point Lookout Formation 5612' TVD

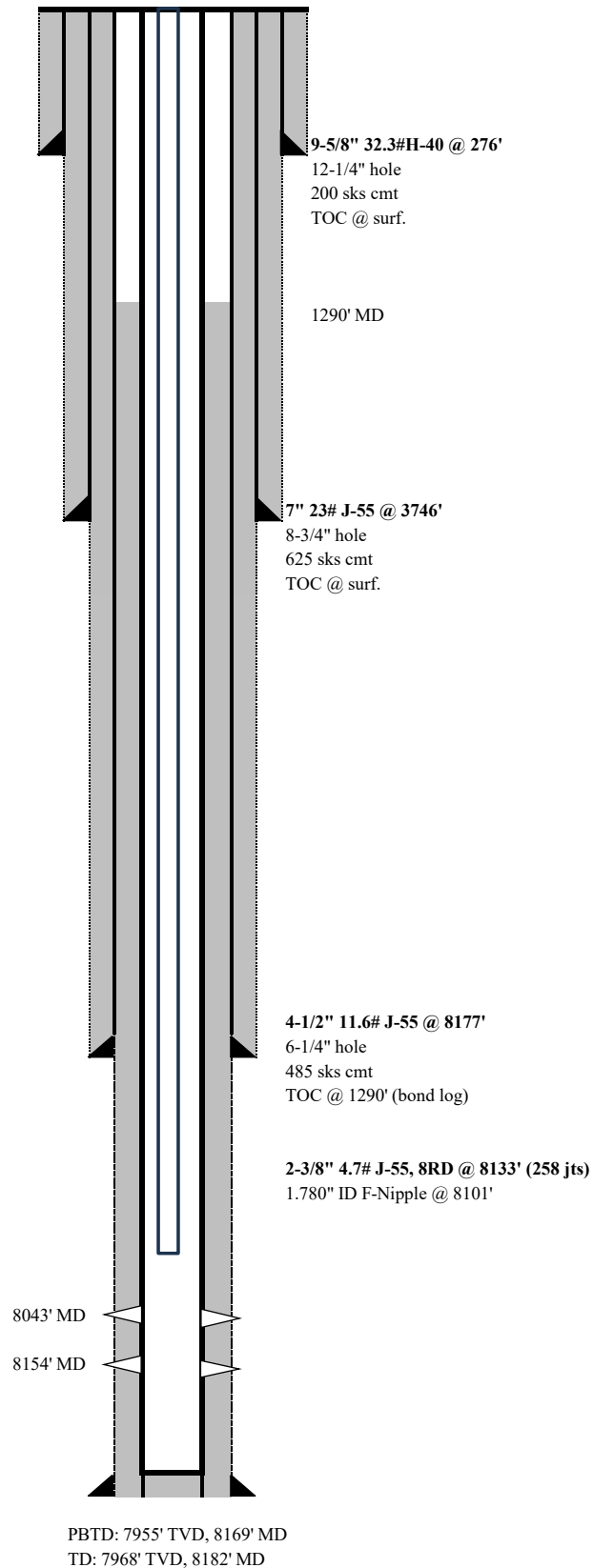
Mancos Formation 6003' TVD

Gallup Formation 6949' TVD

Mancos - Greenhorn 7639' TVD

Mancos - Graneros 7688' TVD

Dakota Formation 7811' TVD





United States Department of the Interior

BUREAU OF LAND MANAGEMENT
Farmington District Office
6251 College Boulevard, Suite A
Farmington, New Mexico 87402
<http://www.blm.gov/nm>



January 10, 2025

CONDITIONS OF APPROVAL

Sundry Notice of Intent ID # 2830739 Proposed Work for Temporary Abandonment

Operator:	Simcoe LLC
Lease:	NMSF 079082
Agreement:	NMNM 78402C
Well(s):	NEBU 41E, API # 30-045-33941
Location:	SWNE Sec 25 T31N R8W (San Juan County, NM)

The request to temporarily abandon the above well is accepted with the following conditions of approval:

1. After work is completed, send in Sundry Notice – Subsequent Report detailing actual work completed with exact dates (month, day, year). And the updated wellbore schematic. The report must be submitted within 30 days after work is completed.
2. Also, after work is completed, send in a Sundry Notice – Notice of Intent requesting temporary abandonment status. Note approval is based on the discretion of this agency. This request must be submitted within 30 days after work is completed.

Include in the Notice of Intent the following:

- a. Proposed exact expiration date (month, day, year). Cannot be later than 12-months from date of submission. The date can also be when the current TA approval will expire.
 - b. Confirmation of other production on lease, or agreement.
 - c. Plans for the well.
3. This agency reserves the right to modify or rescind approval. A plug or produce order may still be issued at the discretion of the authorized officer.
 4. The lease is currently held by production from other wells. Should production from the lease cease, the BLM may require this well be returned to production or P&A, regardless of the amount of time the TA status is still approved for.

For questions concerning this matter, please contact Matthew Kade, Petroleum Engineer at the BLM Farmington Field Office, at (505) 564-7736 or mkade@blm.gov.

Submit 1 Copy To Appropriate District Office
 District I – (575) 393-6161
 1625 N. French Dr., Hobbs, NM 88240
 District II – (575) 748-1283
 811 S. First St., Artesia, NM 88210
 District III – (505) 334-6178
 1000 Rio Brazos Rd., Aztec, NM 87410
 District IV – (505) 476-3460
 1220 S. St. Francis Dr., Santa Fe, NM 87505

State of New Mexico
 Energy, Minerals and Natural Resources

Form C-103
 Revised July 18, 2013

OIL CONSERVATION DIVISION
 1220 South St. Francis Dr.
 Santa Fe, NM 87505

WELL API NO. 30-045-33941
5. Indicate Type of Lease STATE <input type="checkbox"/> FEE <input type="checkbox"/>
6. State Oil & Gas Lease No.
7. Lease Name or Unit Agreement Name NEBU
8. Well Number 41E
9. OGRID Number 6137
10. Pool name or Wildcat Basin Dakota
11. Elevation (Show whether DR, RKB, RT, GR, etc.) 6,400', GL

SUNDRY NOTICES AND REPORTS ON WELLS (DO NOT USE THIS FORM FOR PROPOSALS TO DRILL OR TO DEEPEN OR PLUG BACK TO A DIFFERENT RESERVOIR. USE "APPLICATION FOR PERMIT" (FORM C-101) FOR SUCH PROPOSALS.)	
1. Type of Well: Oil Well <input type="checkbox"/> Gas Well <input checked="" type="checkbox"/> Other	
2. Name of Operator SIMCOE LLC	
3. Address of Operator 1199 Main Ave, Suite 101, Durango, CO 81301	
4. Well Location Unit Letter <u>G</u> : <u>1360</u> feet from the <u>North</u> line and <u>1790</u> feet from the <u>East</u> line Section <u>25</u> Township <u>31N</u> Range <u>8W</u> NMPM San Juan County	
11. Elevation (Show whether DR, RKB, RT, GR, etc.) 6,400', GL	

12. Check Appropriate Box to Indicate Nature of Notice, Report or Other Data

NOTICE OF INTENTION TO:	SUBSEQUENT REPORT OF:
PERFORM REMEDIAL WORK <input type="checkbox"/>	REMEDIAL WORK <input type="checkbox"/>
TEMPORARILY ABANDON <input checked="" type="checkbox"/>	ALTERING CASING <input type="checkbox"/>
PULL OR ALTER CASING <input type="checkbox"/>	COMMENCE DRILLING OPNS. <input type="checkbox"/>
DOWNHOLE COMMINGLE <input type="checkbox"/>	P AND A <input type="checkbox"/>
CLOSED-LOOP SYSTEM <input type="checkbox"/>	CASING/CEMENT JOB <input type="checkbox"/>
OTHER: <input type="checkbox"/>	OTHER: <input type="checkbox"/>

13. Describe proposed or completed operations. (Clearly state all pertinent details, and give pertinent dates, including estimated date of starting any proposed work). SEE RULE 19.15.7.14 NMAC. For Multiple Completions: Attach wellbore diagram of proposed completion or recompletion.

MIRU service unit.

Spool out cap string if present. Pull production tubing and make up 3-1/2" casing scraper.

TIH 3-1/2" casing scraper to bridge plug set 8050' MD.

RIH 3-1/2" cast iron bridge plug and set at 8000' MD (43' above top perf).

Top off casing with 2% KCl w/packer fluid supplied by Western Chemical.

Pressure test casing to 500 psi for 30 min with rig pump. Pressure shall not decrease more than 50 psi over the 30 min period.

Open casing valves to check for flow or pressure change.

Test shall be recorded using a chart recorder with a maximum two hour clock and 1000 pound

spring, calibrated within six months prior to MIT of casing

Submit chart, C-103, and wellbore diagram showing well details and plug set depth.

Air gap and blind flange production flow lines.

After a period not to exceed 5 years after the temporary abandonment has been completed, a workover rig will remove the cast iron bridge plug and monitor pressure buildup of the well for a two week period to determine if the well will return to a production status. If the decision is made to not produce the well, a request for plugging and abandonment will be submitted.

If the decision is made to produce the well, all necessary flow and production lines will be reinstalled for a flow ready status up to and including any removed flowmeters and well ties. Surface facilities will be placed for production purposes.

Spud Date:

Rig Release Date:

I hereby certify that the information above is true and complete to the best of my knowledge and belief.

SIGNATURE Christy Kost TITLE Regulatory Analyst DATE 1/10/2025

Type or print name Christy Kost E-mail address: christy.kost@ikavenergy.com PHONE: 970-822-8931

For State Use Only

APPROVED BY: _____ TITLE _____ DATE _____

Conditions of Approval (if any):

Procedure - Temporary Abandonment

NEBU #041E

(G) Sec 25, T31N, R8W

San Juan County

30-045-33941

MIRU service unit.

Spool out cap string if present. Pull production tubing and make up 3-1/2" casing scraper.

TIH 3-1/2" casing scraper to bridge plug set 8050' MD.

RIH 3-1/2" cast iron bridge plug and set at 8000' MD (43' above top perf).

Top off casing with 2% KCl w/packer fluid supplied by Western Chemical.

Pressure test casing to 500 psi for 30 min with rig pump. Pressure shall not decrease more than 50 psi over the 30 min period

Open casing valves to check for flow or pressure change.

Test shall be recorded using a chart recorder with a maximum two hour clock and 1000 pound spring, calibrated within six months prior to MIT of casing

Submit chart, C-103, and wellbore diagram showing well details and plug set depth.

Air gap and blind flange production flow lines.

After a period not to exceed 5 years after the temporary abandonment has been completed, a workover rig will remove the cast iron bridge plug and monitor pressure buildup of the well for a two week period to determine if the well will return to a production status. If the decision is made to not produce the well, a request for plugging and abandonment will be submitted.

If the decision is made to produce the well, all necessary flow and production lines will be reinstalled for a flow ready status up to and including any removed flowmeters and well ties. Surface facilities will be placed for production purposes.

NERU 041E
API #: 30-045-33941
G-25-31N-08W
San Juan, NM

Current Wellbore

GL: 6400'

San Jose Surface

Ojo Alamo Formation 2213' TVD

Kirtland Formation 2322' TVD

Fruitland Formation 2872' TVD

Pictured Cliffs Formation 3328' TVD

Cliffhouse Formation 5262' TVD

Menefee Formation 5314' TVD

Point Lookout Formation 5612' TVD

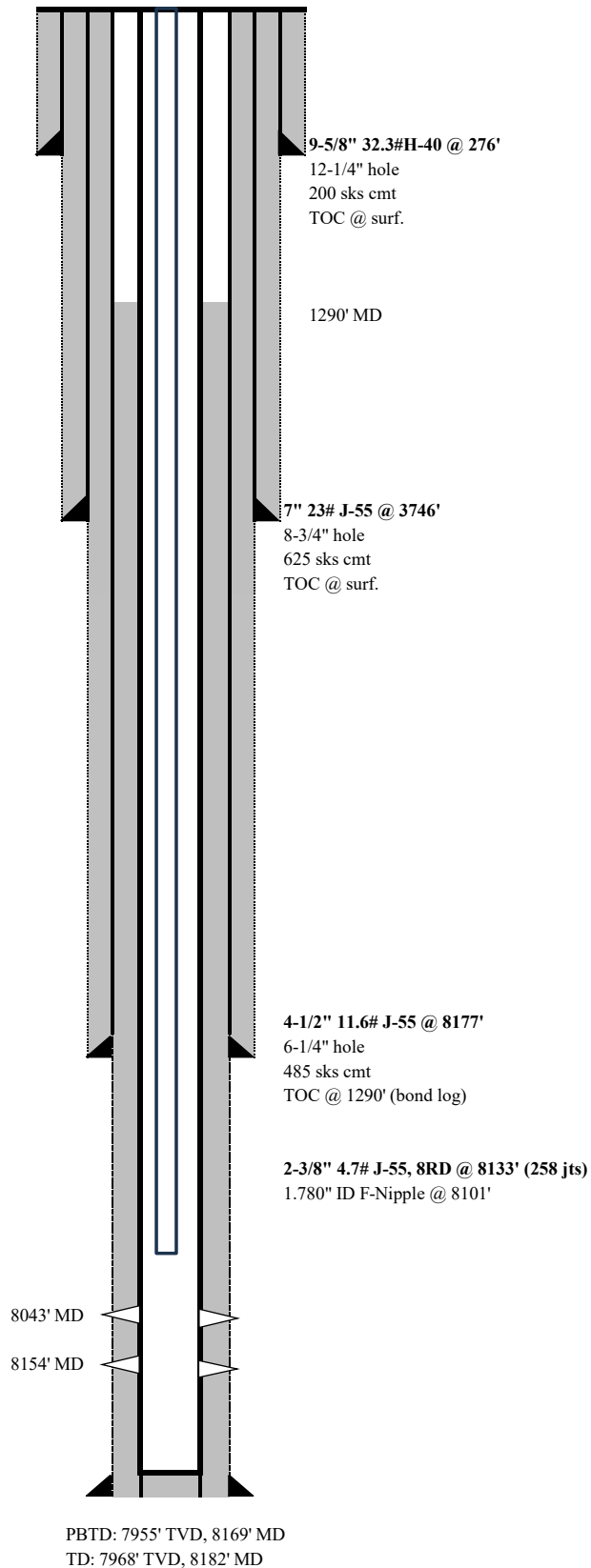
Mancos Formation 6003' TVD

Gallup Formation 6949' TVD

Mancos - Greenhorn 7639' TVD

Mancos - Graneros 7688' TVD

Dakota Formation 7811' TVD



NEBU 041E
 DK
 API #: 30-045-33941
 G-25-31N-08W
 San Juan, NM

Planned Temporary Abandonment

GL: 6400'

San Jose Surface

Ojo Alamo Formation 2213' TVD

Kirtland Formation 2322' TVD

Fruitland Formation 2872' TVD

Pictured Cliffs Formation 3328' TVD

Cliffhouse Formation 5262' TVD

Menefee Formation 5314' TVD

Point Lookout Formation 5612' TVD

Mancos Formation 6003' TVD

Gallup Formation 6949' TVD

Mancos - Greenhorn 7639' TVD

Mancos - Graneros 7688' TVD

Dakota Formation 7811' TVD

9-5/8" 32.3#H-40 @ 276'

12-1/4" hole

200 sks cmt

TOC @ surf.

1290' MD

7" 23# J-55 @ 3746'

8-3/4" hole

625 sks cmt

TOC @ surf.

4-1/2" 11.6# J-55 @ 8177' MD

6-1/4" hole

485 sks cmt

TOC @ 1290' (bond log)

2-3/8" 4.7# J-55, 8RD @ 8133' MD (258 jts)

1.780" ID F-Nipple @ 8101' MD

CIBP set @ 8000' MD

8043' MD

8154' MD

PBTD: 7955' TVD, 8169' MD

TD: 7968' TVD, 8182' MD

Sante Fe Main Office
Phone: (505) 476-3441

General Information
Phone: (505) 629-6116

Online Phone Directory
<https://www.emnrd.nm.gov/ocd/contact-us>

State of New Mexico
Energy, Minerals and Natural Resources
Oil Conservation Division
1220 S. St Francis Dr.
Santa Fe, NM 87505

CONDITIONS

Action 419608

CONDITIONS

Operator: SIMCOE LLC 1199 Main Ave., Suite 101 Durango, CO 81301	OGRID: 329736
	Action Number: 419608
	Action Type: [C-103] NOI Temporary Abandonment (C-103I)

CONDITIONS

Created By	Condition	Condition Date
mkuehling	Two depths for bridge plug stated in procedure 8050/8000- Tool needs to be set within 100 feet of top perforation - if intending to plug in future would be suggested to place within 50 feet of perforations or will have to move the one at 100 feet above for plugging - pressure cannot drop below 500 for pressure test for TA - pressure has to remain steady last 10 minutes of test - Notify NMOCD 24 hours prior to testing - Bradenhead test required prior to MIT day of MIT	1/15/2025