

Well Name: LAMBE	Well Location: T31N / R10W / SEC 20 / SENE / 36.885921 / -107.899444	County or Parish/State: SAN JUAN / NM
Well Number: 2C	Type of Well: CONVENTIONAL GAS WELL	Allottee or Tribe Name:
Lease Number: NMNM03187	Unit or CA Name:	Unit or CA Number:
US Well Number: 3004530747	Operator: HILCORP ENERGY COMPANY	

Subsequent Report

Sundry ID: 2832083

Type of Submission: Subsequent Report	Type of Action: Plug Back
Date Sundry Submitted: 01/16/2025	Time Sundry Submitted: 09:05
Date Operation Actually Began: 01/03/2025	

**Actual Procedure:** Hilcorp Energy plugged back the Dakota & Gallup formations in the subject well per the attached summary and wellbore diagram. DAKOTA FORMATION WAS PLUGGED ON 1/15/2025. WELL IS PRODUCING AS A MESAVERDE ONLY.

SR Attachments

Actual Procedure

LAMBE\_2C\_SR\_20250116090504.pdf

Well Name: LAMBE	Well Location: T31N / R10W / SEC 20 / SENE / 36.885921 / -107.899444	County or Parish/State: SAN JUAN / NM
Well Number: 2C	Type of Well: CONVENTIONAL GAS WELL	Allottee or Tribe Name:
Lease Number: NMNM03187	Unit or CA Name:	Unit or CA Number:
US Well Number: 3004530747	Operator: HILCORP ENERGY COMPANY	

Operator

I certify that the foregoing is true and correct. Title 18 U.S.C. Section 1001 and Title 43 U.S.C. Section 1212, make it a crime for any person knowingly and willfully to make to any department or agency of the United States any false, fictitious or fraudulent statements or representations as to any matter within its jurisdiction. Electronic submission of Sundry Notices through this system satisfies regulations requiring a

Operator Electronic Signature: TAMMY JONES	Signed on: JAN 16, 2025 09:05 AM
Name: HILCORP ENERGY COMPANY	
Title: Regulatory Compliance Specialist	
Street Address: 382 ROAD 3100	
City: AZTEC	State: NM
Phone: (505) 324-5185	
Email address: TAJONES@HILCORP.COM	

Field

Representative Name:		
Street Address:		
City:	State:	Zip:
Phone:		
Email address:		

BLM Point of Contact

BLM POC Name: MATTHEW H KADE	BLM POC Title: Petroleum Engineer
BLM POC Phone: 5055647736	BLM POC Email Address: MKADE@BLM.GOV
Disposition: Accepted	Disposition Date: 01/16/2025
Signature: Matthew Kade	

LAMBE 2C

30.045.30747

PLUG BACK

**1/3/2025** – MIRU. SITP: 60 PSI, SICP: 60 PSI, SIICP: 350 PSI, SIBHP: 0 PSI, BDW & INT: 5 MIN. SDFN.

**1/6/2025** – SITP: 400 PSI, SICP: 400 PSI, SIICP: 100 PSI, SIBHP: 0 PSI, BDW: 10 MIN. ND WH. NU BOP - FUNCTION TEST & PT BOP (GOOD). PULL TBG HGR. TOO H SCANNING 2-3/8" TBG. PU 3-7/8" BIT & STRING MILL. TIH TO 3390'. SIW. SDFN.

**1/7/2025** – SITP: N/A, SICP: 120 PSI, SIICP: 40 PSI, SIBHP: 0 PSI, BDW: 5 MIN. TIH W/TBG TO 7186'. TOO H LD STRING MILL. TIH W/4-1/2" RBP, SET @ 4280'. LOAD CSG & CIRC WELL CLEAN. PT CSG TO 550 PSI. PSI CLIMBED FROM 550 TO 600 (GOOD TEST). EST CIRC W/WATER. WASH DOWN & LATCH RBP. LET PRESSURE EQUILIZE. TOO H W/TBG & 4-1/2" RBP. SIW. SDFN.

**1/8/2025** – SITP: 0 PSI, SICP: 380 PSI, SIICP: 30 PSI, SIBHP: 0 PSI, BDW: 5 MIN. PU 4-1/2" CIBP & TIH SET @ 7110'. RU AIR UNIT. PT LINES (GOOD). EST CIRC W/AIR FOAM UNIT. UNLOAD WELL. CONDUCT WATER RATE TEST W/AIR MIST. LOAD CSG FROM 7110' TO 5348' W/WATER. TOO H EOT @ 4268'. SIW. SDFN.

**1/9/2025** – SITP: 480 PSI, SICP: 480 PSI, SIICP: 40 PSI, SIBHP: 0 PSI, BDW: 10 MIN. TOO H W/TBG. LD SETTING TOOL. PU 4-1/2" PKR, TIH SET PKR @ 5398'. LOAD TBG & WORK AIR OUT OF TBG. UNABLE TO TEST. TIH & SET PKR @ 7011'. WORK AIR OUT OF TBG. UNABLE TO PRESSURE TEST. TOO H W/4-1/2" PKR. SIW. SDFN.

**1/10/2025** – **VERBAL & NOI APPROVAL FROM BLM & NMOC D TO PLUGBACK.** SITP: N/A, SICP: 180 PSI, SIICP: 25 PSI, SIBHP: 0 PSI, BDW: 5 MIN. M/U 4' TAG SUB. TIH & TAG CIBP @ 7110'. SPACE OUT EOT @ 7110'. RU CMT CREW. MIX AND **PUMP PLUG #1** (12 SX, 13.8 CU FT, 1.15 YIELD, 15.8 PPG, 2.46 BBL SLURRY, 1.43 BBL MIX, CLASS G CEMENT NEAT). BALANCED BLIND PLUG W/14.8 BBL TO ISOLATE DAKOTA, GRANAROS, AND GREENHORN FORMATIONS. EST. TOC AT 6956'. L/D TBG & TOO H W/TBG TO 3168'. WASH UP. SIW. SDFN. **BLM REP JOSEPH MAESTAS WAS ON LOCATION.**

**1/13/2025** – SITP: 390 PSI, SICP: 390 PSI, SIICP: 60 PSI, SIBHP: 0 PSI, BDW: 10 MIN. TIH AND TAG PLUG #1 AT 6882'. **PLUG APPROVED BY JOE MAESTAS WITH BLM AND MONICA KUEHLING WITH NMOC D.** L/D TUBING. EOT AT 6434'. MIX AND **PUMP PLUG #2** (16 SX, 18.4 CU FT, 1.15 YIELD, 15.8 PPG, 3.3 BBL SLURRY, 1.9 BBL MIX, 11.5 BBL DISP, CLASS G CEMENT) TO ISOLATE GALLUP TOP (6343') FROM 6230' TO 6435'. TOH WITH TUBING TO 3294'. WOC. TIH AND TAG PLUG #2 AT 6230'. TOO H W/TBG & PLUGGING SUB. SIW. SDFN. **JOE MESTAS W/ BLM ON LOCATION.**

**1/14/2025** – SITP: 0 PSI, SICP: 350 PSI, SIICP: 50 PSI, SIBHP: 0 PSI, BDW: 10 MIN. P/U 4-1/2" CIBP. TIH AND SET CIBP @ 5382'. L/D 1 JT. EST CIRC W/AIR MIST. UNLOAD WATER & EST WATER RATE. TOO H WITH TUBING & SETTING TOOL. SIW. SDFN.

**1/15/2025** – SITP: 0 PSI, SICP: 380 PSI, SIICP: 40 PSI, SIBHP: 0 PSI, BDW: 10 MIN. LAND 169 JTS 2-3/8" 4.7# J-55 TUBING @ 5322', SN @ 5320'. ND BOP NU WH. PUMP 8 BBLS DWN TBG. DROP PUMP OFF BALL. PT TBG W/AIR TO 500 PSI (GOOD). PUMP OFF EXP CK @ 950 PSI. UNLOAD WELL. RD. RIG RELEASED.

**DAKOTA FORMATION WAS PLUGGED ON 1/15/2025. WELL IS PRODUCING AS A MESAVERDE ONLY.**

Tammy Jones

---

From: Diede, Loren, EMNRD <Loren.Diede@emnrd.nm.gov>  
Sent: Friday, January 10, 2025 10:49 AM  
To: Jackson Lancaster; Kuehling, Monica, EMNRD; Rennick, Kenneth G  
Cc: Lisa Helper; Austin Harrison; Trey Misuraca; Cameron Skelton; Issac Overright - (C); Jose Morales; Cheryl Weston; Farmington Regulatory Techs  
Subject: RE: [EXTERNAL] NOI Request: Lambe 2C Plug Back

**CAUTION:** External sender. DO NOT open links or attachments from UNKNOWN senders.

Jackson,

NMOCD approves the plug back as presented in the BLM approved NOI.

Loren Diede

Thank you,  
Loren Diede  
Petroleum Specialist Advanced  
Oil Conservation Division  
1220 South St. Francis Drive  
Santa Fe, New Mexico 87505  
505-394-3582 OCD cell



---

From: Jackson Lancaster <Jackson.Lancaster@hilcorp.com>  
Sent: Friday, January 10, 2025 10:04 AM  
To: Kuehling, Monica, EMNRD <monica.kuehling@emnrd.nm.gov>; Rennick, Kenneth G <krennick@blm.gov>; Diede, Loren, EMNRD <Loren.Diede@emnrd.nm.gov>  
Cc: Lisa Helper <lhelper@hilcorp.com>; Austin Harrison <aharrison@hilcorp.com>; Trey Misuraca <Trey.Misuraca@hilcorp.com>; Cameron Skelton <Cameron.Skelton@hilcorp.com>; Issac Overright - (C) <Issac.Overright@hilcorp.com>; Jose Morales <jomorales@hilcorp.com>; Cheryl Weston <cweston@hilcorp.com>; Farmington Regulatory Techs <FarmingtonRegulatoryTechs@hilcorp.com>  
Subject: RE: [EXTERNAL] NOI Request: Lambe 2C Plug Back

Monica,

The CBL has been uploaded to the system. We do not have a stage tool in this wellbore. We do have CIBP above DK perforations, but below the Graneros top.

Thanks,

Jackson Lancaster  
SJN Ops Engineer

---

**From:** Jackson Lancaster  
**Sent:** Friday, January 10, 2025 10:02 AM  
**To:** Tammy Jones; Kade, Matthew H; Kuehling, Monica, EMNRD; Rennick, Kenneth G; Diede, Loren, EMNRD  
**Cc:** Lisa Helper; Austin Harrison; Trey Misuraca; Cameron Skelton; Issac Overright - (C); Jose Morales; Cheryl Weston; Farmington Regulatory Techs  
**Subject:** RE: [EXTERNAL] NOI Request: Lambe 2C Plug Back

Loren,

If you have any questions on the formation tops please give me a call. The BLM has approved this NOI.

Thanks,

Jackson Lancaster  
SJN Ops Engineer  
Hilcorp Energy Company  
Office: 713-289-2629  
Cell: 432-413-4109

---

**From:** Tammy Jones <tajones@hilcorp.com>  
**Sent:** Friday, January 10, 2025 10:13 AM  
**To:** Kade, Matthew H <mkade@blm.gov>; Kuehling, Monica, EMNRD <monica.kuehling@emnrd.nm.gov>; Jackson Lancaster <Jackson.Lancaster@hilcorp.com>; Rennick, Kenneth G <krennick@blm.gov>; Diede, Loren, EMNRD <Loren.Diede@emnrd.nm.gov>  
**Cc:** Lisa Helper <lhelper@hilcorp.com>; Austin Harrison <aharrison@hilcorp.com>; Trey Misuraca <Trey.Misuraca@hilcorp.com>; Cameron Skelton <Cameron.Skelton@hilcorp.com>; Issac Overright - (C) <Issac.Overright@hilcorp.com>; Jose Morales <jomorales@hilcorp.com>; Cheryl Weston <cweston@hilcorp.com>; Farmington Regulatory Techs <FarmingtonRegulatoryTechs@hilcorp.com>  
**Subject:** RE: [EXTERNAL] NOI Request: Lambe 2C Plug Back

Hi Loren & Monica,

- The NOI has been submitted to NMOCD – Action ID: **419408**

Thanks,

**Tammy Jones** | **HILCORP ENERGY COMPANY** | San Juan Regulatory | 505.324.5185 | [tajones@hilcorp.com](mailto:tajones@hilcorp.com)

---

**From:** Kade, Matthew H <[mkade@blm.gov](mailto:mkade@blm.gov)>  
**Sent:** Friday, January 10, 2025 8:24 AM  
**To:** Tammy Jones <[tajones@hilcorp.com](mailto:tajones@hilcorp.com)>; Kuehling, Monica, EMNRD <[monica.kuehling@emnrd.nm.gov](mailto:monica.kuehling@emnrd.nm.gov)>; Jackson Lancaster <[Jackson.Lancaster@hilcorp.com](mailto:Jackson.Lancaster@hilcorp.com)>; Rennick, Kenneth G <[krennick@blm.gov](mailto:krennick@blm.gov)>; Diede, Loren, EMNRD <[Loren.Diede@emnrd.nm.gov](mailto:Loren.Diede@emnrd.nm.gov)>  
**Cc:** Lisa Helper <[lhelper@hilcorp.com](mailto:lhelper@hilcorp.com)>; Austin Harrison <[aharrison@hilcorp.com](mailto:aharrison@hilcorp.com)>; Trey Misuraca <[Trey.Misuraca@hilcorp.com](mailto:Trey.Misuraca@hilcorp.com)>; Cameron Skelton <[Cameron.Skelton@hilcorp.com](mailto:Cameron.Skelton@hilcorp.com)>; Issac Overright - (C) <[Issac.Overright@hilcorp.com](mailto:Issac.Overright@hilcorp.com)>; Jose Morales <[jomorales@hilcorp.com](mailto:jomorales@hilcorp.com)>; Cheryl Weston <[cweston@hilcorp.com](mailto:cweston@hilcorp.com)>; Farmington Regulatory Techs <[FarmingtonRegulatoryTechs@hilcorp.com](mailto:FarmingtonRegulatoryTechs@hilcorp.com)>  
**Subject:** Re: [EXTERNAL] NOI Request: Lambe 2C Plug Back

**CAUTION:** External sender. DO NOT open links or attachments from UNKNOWN senders.

Thank you. We will get that approved here shortly.

**Matthew Kade**

Petroleum Engineer  
BLM - Farmington Field Office  
6251 College Blvd  
Farmington, NM 87402  
Office: (505) 564-7736

---

**From:** Tammy Jones <[tajones@hilcorp.com](mailto:tajones@hilcorp.com)>**Sent:** Friday, January 10, 2025 8:19 AM**To:** Kuehling, Monica, EMNRD <[monica.kuehling@emnrd.nm.gov](mailto:monica.kuehling@emnrd.nm.gov)>; Jackson Lancaster <[Jackson.Lancaster@hilcorp.com](mailto:Jackson.Lancaster@hilcorp.com)>; Rennick, Kenneth G <[krennick@blm.gov](mailto:krennick@blm.gov)>; Diede, Loren, EMNRD <[Loren.Diede@emnrd.nm.gov](mailto:Loren.Diede@emnrd.nm.gov)>; Kade, Matthew H <[mkade@blm.gov](mailto:mkade@blm.gov)>**Cc:** Lisa Helper <[lhelper@hilcorp.com](mailto:lhelper@hilcorp.com)>; Austin Harrison <[aharrison@hilcorp.com](mailto:aharrison@hilcorp.com)>; Trey Misuraca <[Trey.Misuraca@hilcorp.com](mailto:Trey.Misuraca@hilcorp.com)>; Cameron Skelton <[Cameron.Skelton@hilcorp.com](mailto:Cameron.Skelton@hilcorp.com)>; Issac Overright - (C) <[Issac.Overright@hilcorp.com](mailto:Issac.Overright@hilcorp.com)>; Jose Morales <[jomorales@hilcorp.com](mailto:jomorales@hilcorp.com)>; Cheryl Weston <[cweston@hilcorp.com](mailto:cweston@hilcorp.com)>; Farmington Regulatory Techs <[FarmingtonRegulatoryTechs@hilcorp.com](mailto:FarmingtonRegulatoryTechs@hilcorp.com)>**Subject:** RE: [EXTERNAL] NOI Request: Lambe 2C Plug Back

Hi Matthew & Kenny,

- The NOI has been submitted to BLM – AFMSS Sundry ID: **2831045**

Thanks,

**Tammy Jones** | **HILCORP ENERGY COMPANY** | San Juan Regulatory | 505.324.5185 | [tajones@hilcorp.com](mailto:tajones@hilcorp.com)

---

**From:** Tammy Jones <[tajones@hilcorp.com](mailto:tajones@hilcorp.com)>**Sent:** Friday, January 10, 2025 7:53 AM**To:** Kuehling, Monica, EMNRD <[monica.kuehling@emnrd.nm.gov](mailto:monica.kuehling@emnrd.nm.gov)>; Jackson Lancaster <[Jackson.Lancaster@hilcorp.com](mailto:Jackson.Lancaster@hilcorp.com)>; Rennick, Kenneth G <[krennick@blm.gov](mailto:krennick@blm.gov)>; Diede, Loren, EMNRD <[Loren.Diede@emnrd.nm.gov](mailto:Loren.Diede@emnrd.nm.gov)>**Cc:** Lisa Helper <[lhelper@hilcorp.com](mailto:lhelper@hilcorp.com)>; Austin Harrison <[aharrison@hilcorp.com](mailto:aharrison@hilcorp.com)>; Trey Misuraca <[Trey.Misuraca@hilcorp.com](mailto:Trey.Misuraca@hilcorp.com)>; Cameron Skelton <[Cameron.Skelton@hilcorp.com](mailto:Cameron.Skelton@hilcorp.com)>; Issac Overright - (C) <[Issac.Overright@hilcorp.com](mailto:Issac.Overright@hilcorp.com)>; Jose Morales <[jomorales@hilcorp.com](mailto:jomorales@hilcorp.com)>; Cheryl Weston <[cweston@hilcorp.com](mailto:cweston@hilcorp.com)>; Farmington Regulatory Techs <[FarmingtonRegulatoryTechs@hilcorp.com](mailto:FarmingtonRegulatoryTechs@hilcorp.com)>**Subject:** RE: [EXTERNAL] NOI Request: Lambe 2C Plug Back

Good morning,

The Log for this well has been submitted to NMOCD Permit ID: 381095

---

**From:** Kuehling, Monica, EMNRD <[monica.kuehling@emnrd.nm.gov](mailto:monica.kuehling@emnrd.nm.gov)>**Sent:** Friday, January 10, 2025 7:44 AM**To:** Jackson Lancaster <[Jackson.Lancaster@hilcorp.com](mailto:Jackson.Lancaster@hilcorp.com)>; Rennick, Kenneth G <[krennick@blm.gov](mailto:krennick@blm.gov)>; Diede, Loren, EMNRD <[Loren.Diede@emnrd.nm.gov](mailto:Loren.Diede@emnrd.nm.gov)>**Cc:** Lisa Helper <[lhelper@hilcorp.com](mailto:lhelper@hilcorp.com)>; Austin Harrison <[aharrison@hilcorp.com](mailto:aharrison@hilcorp.com)>; Trey Misuraca <[Trey.Misuraca@hilcorp.com](mailto:Trey.Misuraca@hilcorp.com)>; Cameron Skelton <[Cameron.Skelton@hilcorp.com](mailto:Cameron.Skelton@hilcorp.com)>; Issac Overright - (C) <[Issac.Overright@hilcorp.com](mailto:Issac.Overright@hilcorp.com)>; Jose Morales <[jomorales@hilcorp.com](mailto:jomorales@hilcorp.com)>; Cheryl Weston <[cweston@hilcorp.com](mailto:cweston@hilcorp.com)>; Farmington Regulatory Techs <[FarmingtonRegulatoryTechs@hilcorp.com](mailto:FarmingtonRegulatoryTechs@hilcorp.com)>**Subject:** Re: [EXTERNAL] NOI Request: Lambe 2C Plug Back

**CAUTION:** External sender. DO NOT open links or attachments from UNKNOWN senders.

Jackson I can't read the log see if Priscilla can put it in the system do you have a tool above your perforations for Dakota if so where is it set (the schematic shows tools)we will wait on BLM for confirmation

Please work with Loren on tops

Thank you

Monica

Get [Outlook for iOS](#)

---

**From:** Jackson Lancaster <[Jackson.Lancaster@hilcorp.com](mailto:Jackson.Lancaster@hilcorp.com)>

**Sent:** Thursday, January 9, 2025 5:34:08 PM

**To:** Kuehling, Monica, EMNRD <[monica.kuehling@emnrd.nm.gov](mailto:monica.kuehling@emnrd.nm.gov)>; Rennick, Kenneth G <[krennick@blm.gov](mailto:krennick@blm.gov)>; Diede, Loren, EMNRD <[Loren.Diede@emnrd.nm.gov](mailto:Loren.Diede@emnrd.nm.gov)>

**Cc:** Lisa Helper <[lhelper@hilcorp.com](mailto:lhelper@hilcorp.com)>; Austin Harrison <[aharrison@hilcorp.com](mailto:aharrison@hilcorp.com)>; Trey Misuraca <[Trey.Misuraca@hilcorp.com](mailto:Trey.Misuraca@hilcorp.com)>; Cameron Skelton <[Cameron.Skelton@hilcorp.com](mailto:Cameron.Skelton@hilcorp.com)>; Issac Overright - (C) <[Issac.Overright@hilcorp.com](mailto:Issac.Overright@hilcorp.com)>; Jose Morales <[jomorales@hilcorp.com](mailto:jomorales@hilcorp.com)>; Cheryl Weston <[cweston@hilcorp.com](mailto:cweston@hilcorp.com)>; Farmington Regulatory Techs <[FarmingtonRegulatoryTechs@hilcorp.com](mailto:FarmingtonRegulatoryTechs@hilcorp.com)>

**Subject:** [EXTERNAL] NOI Request: Lambe 2C Plug Back

**CAUTION:** This email originated outside of our organization. Exercise caution prior to clicking on links or opening attachments.

Monica/Kenny/Loren,

As per our phone conversations, please see the attached NOI for the plug back operations on the Lambe 2C. I have also attached the associated CBL for this well to the email.

Thank you for your help on this.

Jackson Lancaster  
SJN Ops Engineer  
Hilcorp Energy Company  
Office: 713-289-2629  
Cell: 432-413-4109

---

The information contained in this email message is confidential and may be legally privileged and is intended only for the use of the individual or entity named above. If you are not an intended recipient or if you have received this message in error, you are hereby notified that any dissemination, distribution, or copy of this email is strictly prohibited. If you have received this email in error, please immediately notify us by return email or telephone if the sender's phone number is listed above, then promptly and permanently delete this message.

While all reasonable care has been taken to avoid the transmission of viruses, it is the responsibility of the recipient to ensure that the onward transmission, opening, or use of this message and any attachments will not adversely affect its systems or data. No responsibility is accepted by the company in this regard and the recipient should carry out such virus and other checks as it considers appropriate.

---



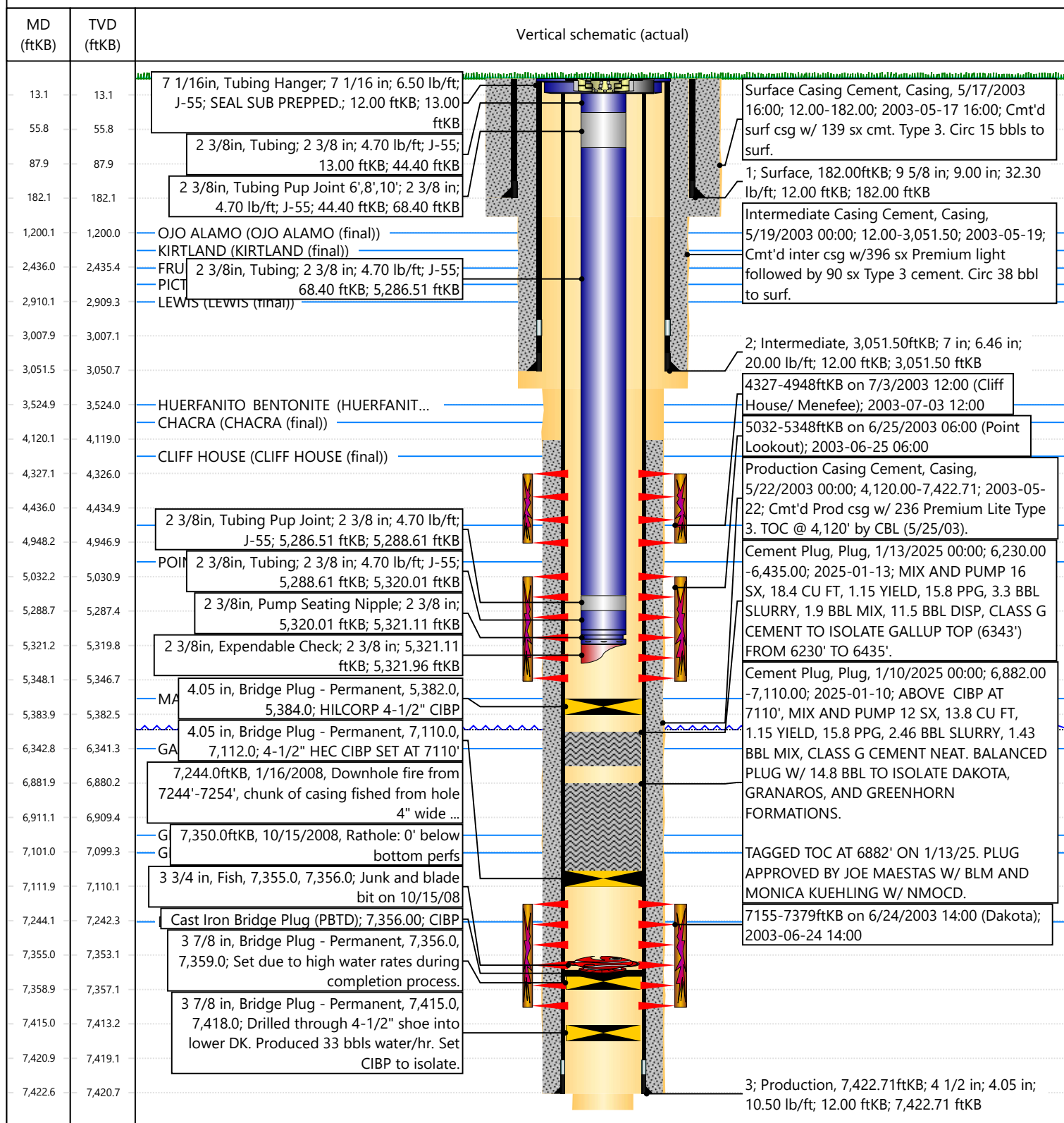


## Current Schematic - Version 3

Well Name: LAMBE #2C

API / UWI 3004530747	Surface Legal Location 020-031N-010W-H	Field Name BASIN DAKOTA (PRORATED GAS)	Route 0301	State/Province NEW MEXICO	Well Configuration Type Vertical
Ground Elevation (ft) 6,085.00	Original KB/RT Elevation (ft) 6,097.00	Tubing Hanger Elevation (ft)	RKB to GL (ft) 12.00	KB-Casing Flange Distance (ft)	KB-Tubing Hanger Distance (ft)
<b>Tubing Strings</b>					
Run Date 1/14/2025 00:00	Set Depth (ftKB) 5,321.96	String Max Nominal OD (in) 2 3/8	String Min Nominal ID (in) 2.00	Weight/Length (lb/ft) 4.70	Original Spud Date 5/15/2003 14:00

## Original Hole [Vertical]





Sante Fe Main Office  
Phone: (505) 476-3441

General Information  
Phone: (505) 629-6116

Online Phone Directory  
<https://www.emnrd.nm.gov/ocd/contact-us>

State of New Mexico  
Energy, Minerals and Natural Resources  
Oil Conservation Division  
1220 S. St Francis Dr.  
Santa Fe, NM 87505

CONDITIONS

Action 421907

CONDITIONS

Operator: HILCORP ENERGY COMPANY 1111 Travis Street Houston, TX 77002	OGRID: 372171
	Action Number: 421907
	Action Type: [C-103] Sub. Plugging (C-103P)

CONDITIONS

Created By	Condition	Condition Date
mkuehling	None	1/22/2025