

Well Name: RED HILLS NORTH UNIT	Well Location: T25S / R33E / SEC 1 / SENW / 32.160941 / -103.52814	County or Parish/State: LEA / NM
Well Number: 107	Type of Well: OIL WELL	Allottee or Tribe Name:
Lease Number: NMNM30400	Unit or CA Name: CLOSED - RED HILLS NORTH UNIT	Unit or CA Number: NMNM104037X
US Well Number: 3002533214	Operator: EOG RESOURCES INCORPORATED	

Subsequent Report

Sundry ID: 2798911

Type of Submission: Subsequent Report

Date Sundry Submitted: 11/14/2024

Date Operation Actually Began: 09/04/2024

Type of Action: Temporary Abandonment

Time Sundry Submitted: 07:05

Actual Procedure: EOG TA'D THIS WELL ON 9/7/2024. PLEASE FIND THE ATTACHED FINAL WELLBORE  
DIAGRAM AND WELL WORK DONE

SR Attachments

Actual Procedure

RHNU\_107\_FINAL\_TA\_20241114070511.pdf

SR Conditions of Approval

Specialist Review

TA\_COA\_20241114133803.pdf

Well Name: RED HILLS NORTH UNIT	Well Location: T25S / R33E / SEC 1 / SENW / 32.160941 / -103.52814	County or Parish/State: LEA / NM
Well Number: 107	Type of Well: OIL WELL	Allottee or Tribe Name:
Lease Number: NMNM30400	Unit or CA Name: CLOSED - RED HILLS NORTH UNIT	Unit or CA Number: NMNM104037X
US Well Number: 3002533214	Operator: EOG RESOURCES INCORPORATED	

Operator

I certify that the foregoing is true and correct. Title 18 U.S.C. Section 1001 and Title 43 U.S.C. Section 1212, make it a crime for any person knowingly and willfully to make to any department or agency of the United States any false, fictitious or fraudulent statements or representations as to any matter within its jurisdiction. Electronic submission of Sundry Notices through this system satisfies regulations requiring a

Operator Electronic Signature: KRISTINA AGEE	Signed on: NOV 14, 2024 07:05 AM
Name: EOG RESOURCES INCORPORATED	
Title: Senior Regulatory Administrator	
Street Address: 5509 Champions Dr.	
City: Midland	State: TX
Phone: (432) 686-6996	
Email address: kristina_agee@eogresources.com	

Field

Representative Name:		
Street Address:		
City:	State:	Zip:
Phone:		
Email address:		

BLM Point of Contact

BLM POC Name: JONATHON W SHEPARD	BLM POC Title: Petroleum Engineer
BLM POC Phone: 5752345972	BLM POC Email Address: jshepard@blm.gov
Disposition: Approved	Disposition Date: 11/14/2024
Signature: Jonathon Shepard	

Form 3160-5 (June 2019)	UNITED STATES DEPARTMENT OF THE INTERIOR BUREAU OF LAND MANAGEMENT	FORM APPROVED OMB No. 1004-0137 Expires: October 31, 2021
<b>SUNDRY NOTICES AND REPORTS ON WELLS</b> <i>Do not use this form for proposals to drill or to re-enter an abandoned well. Use Form 3160-3 (APD) for such proposals.</i>		5. Lease Serial No.
		6. If Indian, Allottee or Tribe Name

<b>SUBMIT IN TRIPLICATE - Other instructions on page 2</b>		7. If Unit of CA/Agreement, Name and/or No.
1. Type of Well <input type="checkbox"/> Oil Well <input type="checkbox"/> Gas Well <input type="checkbox"/> Other		8. Well Name and No.
2. Name of Operator		9. API Well No.
3a. Address	3b. Phone No. (include area code)	10. Field and Pool or Exploratory Area
4. Location of Well (Footage, Sec., T.,R.,M., or Survey Description)		11. Country or Parish, State

12. CHECK THE APPROPRIATE BOX(ES) TO INDICATE NATURE OF NOTICE, REPORT OR OTHER DATA				
TYPE OF SUBMISSION	TYPE OF ACTION			
<input type="checkbox"/> Notice of Intent	<input type="checkbox"/> Acidize	<input type="checkbox"/> Deepen	<input type="checkbox"/> Production (Start/Resume)	<input type="checkbox"/> Water Shut-Off
<input type="checkbox"/> Subsequent Report	<input type="checkbox"/> Alter Casing	<input type="checkbox"/> Hydraulic Fracturing	<input type="checkbox"/> Reclamation	<input type="checkbox"/> Well Integrity
<input type="checkbox"/> Final Abandonment Notice	<input type="checkbox"/> Casing Repair	<input type="checkbox"/> New Construction	<input type="checkbox"/> Recomplete	<input type="checkbox"/> Other
	<input type="checkbox"/> Change Plans	<input type="checkbox"/> Plug and Abandon	<input type="checkbox"/> Temporarily Abandon	
	<input type="checkbox"/> Convert to Injection	<input type="checkbox"/> Plug Back	<input type="checkbox"/> Water Disposal	

13. Describe Proposed or Completed Operation: Clearly state all pertinent details, including estimated starting date of any proposed work and approximate duration thereof. If the proposal is to deepen directionally or recompleate horizontally, give subsurface locations and measured and true vertical depths of all pertinent markers and zones. Attach the Bond under which the work will be perfonned or provide the Bond No. on file with BLM/BIA. Required subsequent reports must be filed within 30 days following completion of the involved operations. If the operation results in a multiple completion or recompletion in a new interval, a Form 3160-4 must be filed once testing has been completed. Final Abandonment Notices must be filed only after all requirements, including reclamation, have been completed and the operator has detennined that the site is ready for final inspection.)

14. I hereby certify that the foregoing is true and correct. Name (Printed/Typed)		
	Title	
Signature	Date	

<b>THE SPACE FOR FEDERAL OR STATE OFFICE USE</b>		
Approved by	Title	Date
Conditions of approval, if any, are attached. Approval of this notice does not warrant or certify that the applicant holds legal or equitable title to those rights in the subject lease which would entitle the applicant to conduct operations thereon.	Office	

Title 18 U.S.C Section 1001 and Title 43 U.S.C Section 1212, make it a crime for any person knowingly and willfully to make to any department or agency of the United States any false, fictitious or fraudulent statements or representations as to any matter within its jurisdiction.

(Instructions on page 2)

## GENERAL INSTRUCTIONS

This form is designed for submitting proposals to perform certain well operations and reports of such operations when completed as indicated on Federal and Indian lands pursuant to applicable Federal law and regulations. Any necessary special instructions concerning the use of this form and the number of copies to be submitted, particularly with regard to local area or regional procedures and practices, are either shown below, will be issued by or may be obtained from the local Federal office.

## SPECIFIC INSTRUCTIONS

*Item 4* - Locations on Federal or Indian land should be described in accordance with Federal requirements. Consult the local Federal office for specific instructions.

*Item 13*: Proposals to abandon a well and subsequent reports of abandonment should include such special information as is required by the local Federal office. In addition, such proposals and reports should include reasons for the abandonment; data on any former or present productive zones or other zones with present significant fluid contents not sealed off by cement or otherwise; depths (top and bottom) and method of placement of cement plugs; mud or other material placed below, between and above plugs; amount, size, method of parting of any casing, liner or tubing pulled and the depth to the top of any tubing left in the hole; method of closing top of well and date well site conditioned for final inspection looking for approval of the abandonment. If the proposal will involve **hydraulic fracturing operations**, you must comply with 43 CFR 3162.3-3, including providing information about the protection of usable water. Operators should provide the best available information about all formations containing water and their depths. This information could include data and interpretation of resistivity logs run on nearby wells. Information may also be obtained from state or tribal regulatory agencies and from local BLM offices.

## NOTICES

The privacy Act of 1974 and the regulation in 43 CFR 2.48(d) provide that you be furnished the following information in connection with information required by this application.

AUTHORITY: 30 U.S.C. 181 et seq., 351 et seq., 25 U.S.C. 396; 43 CFR 3160.

PRINCIPAL PURPOSE: The information is used to: (1) Evaluate, when appropriate, approve applications, and report completion of subsequent well operations, on a Federal or Indian lease; and (2) document for administrative use, information for the management, disposal and use of National Resource lands and resources, such as: (a) evaluating the equipment and procedures to be used during a proposed subsequent well operation and reviewing the completed well operations for compliance with the approved plan; (b) requesting and granting approval to perform those actions covered by 43 CFR 3162.3-2, 3162.3-3, and 3162.3-4; (c) reporting the beginning or resumption of production, as required by 43 CFR 3162.4-1(c) and (d) analyzing future applications to drill or modify operations in light of data obtained and methods used.

ROUTINE USES: Information from the record and/or the record will be transferred to appropriate Federal, State, local or foreign agencies, when relevant to civil, criminal or regulatory investigations or prosecutions in connection with congressional inquiries or to consumer reporting agencies to facilitate collection of debts owed the Government.

EFFECT OF NOT PROVIDING THE INFORMATION: Filing of this notice and report and disclosure of the information is mandatory for those subsequent well operations specified in 43 CFR 3162.3-2, 3162.3-3, 3162.3-4.

The Paperwork Reduction Act of 1995 requires us to inform you that:

The BLM collects this information to evaluate proposed and/or completed subsequent well operations on Federal or Indian oil and gas leases.

Response to this request is mandatory.

The BLM would like you to know that you do not have to respond to this or any other Federal agency-sponsored information collection unless it displays a currently valid OMB control number.

**BURDEN HOURS STATEMENT:** Public reporting burden for this form is estimated to average 8 hours per response, including the time for reviewing instructions, gathering and maintaining data, and completing and reviewing the form. Direct comments regarding the burden estimate or any other aspect of this form to U.S. Department of the Interior, Bureau of Land Management (1004-0137), Bureau Information Collection Clearance Officer (WO-630), 1849 C St., N.W., Mail Stop 401 LS, Washington, D.C. 20240

## **Additional Information**

### **Location of Well**

0. SHL: SENW / 2130 FNL / 1980 FWL / TWSP: 25S / RANGE: 33E / SECTION: 1 / LAT: 32.160941 / LONG: -103.52814 ( TVD: 0 feet, MD: 0 feet )

BHL: SENW / 2130 FNL / 1980 FWL / TWSP: 25S / SECTION: / LAT: 32.160941 / LONG: 103.52814 ( TVD: 0 feet, MD: 0 feet )

## BUREAU OF LAND MANAGEMENT

Carlsbad Field Office  
620 East Greene Street  
Carlsbad, New Mexico 88220  
575-234-5972

### Conditions of Approval for Temporary Abandonment of Wells

**Definition:** A temporarily abandoned well is a completion that is not capable of production in paying quantities, but which may have future value. Pursuant to 43 CFR 3162.3-4 (c), no well may be temporarily abandoned for more than 30 days without the prior approval of the authorized officer.

1. TA status will be effective for a period of up to one year from the date of sundry approval and can be renewed annually thereafter per IM NM-2016-017.
2. A bridge plug (CIBP) must be installed 50 to 100 feet above any open perforations/open hole/kick off point. The CIBP must be capped with either a minimum of 25 sacks of cement if placed with tubing or 35 feet of cement if placed with a bailer. The top of the cement must be verified by tagging.
3. The wellbore must be filled with corrosion inhibited fluid and pressure tested to 500 psi. The casing shall be capable of holding this pressure for at least 30 minutes. If the well does not pass the casing integrity test, then the operator shall, within 30 days, submit a procedure to either repair the casing or to plug and abandon the well.
4. Contact the appropriate BLM office at least 24 hours prior to the scheduled Casing Integrity Test. For wells in Eddy County, 575-361-2822; Lea County 575-393-3612.
5. All downhole production/injection equipment (tubing, rods, etc.) shall be removed from the casing if it is not isolated by a packer.
6. A bradenhead test must be conducted. If the test indicates a problem, a remedial plan and time frame for remediation shall be submitted within ninety (90) days of the test.
7. Submit a subsequent Sundry Notice (Form 3160-5) with the following information:
  - a. A well bore diagram with all perforations, CIBP's, and tops of cement on CIBP's.
  - b. A description of the temporary abandonment procedure.
  - c. A clear copy or the original of the pressure test chart.

**RED HILLS NORTH UNIT #107**

**30-025-33214**

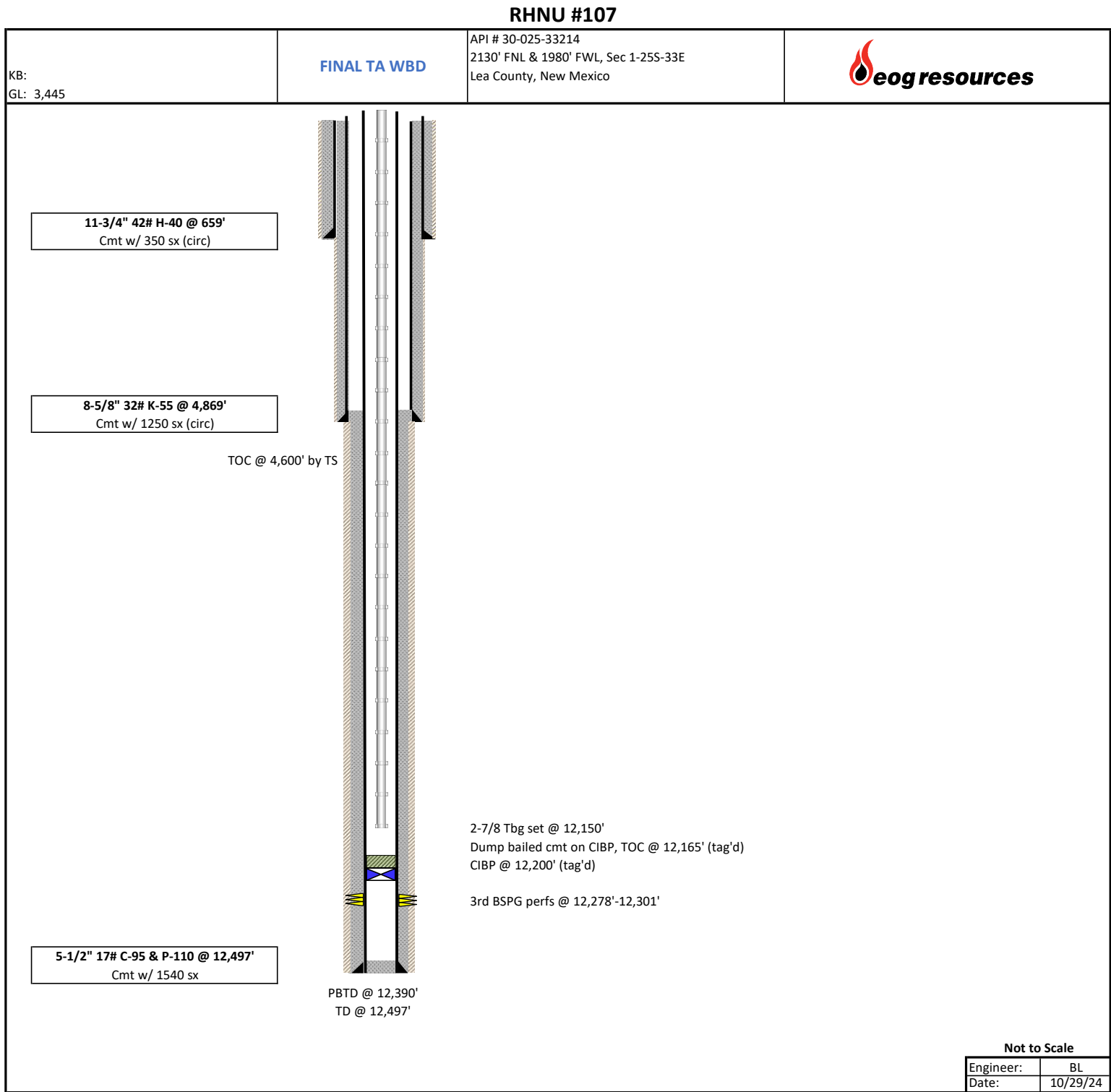
WELL WORK TO TA WELL:

9/4/2024      MIRU WOR, ND WH & NU BOP, POOH LAY DOWN PUMP & RODS

9/5/2024      RELEASE TAC & POOH W/ TBG  
MIRU WL, RIH W/ GR & JB TO 12,250', POOH WL  
RIH W/ 5.5" CIBP, SET CIBP @ 12,200', PU 25', RIH TAG CIBP, POOH WL  
RIH W/ DUMP BAILER, DUMP 35' CMT ON CIBP, POOH RDMO WL

9/6/2024      TIH W/ 2.875" TBG, TAG TOC @ 12,165', CIRC PKR FLUID, SET TBG @ 12,150'  
ND BOP & NU WH, RDMO

9/7/2024      PERFORM MIT ON 5.5" CSG, TEST GOOD – APPROVED BY HOBBS BLM





## Detailed Job Breakdown



## JOB REPORT

## COMPANY DETAILS

Company: EOG RHNU 107

Email:

Contact: JASON

Phone:

## JOB DETAILS

DATE 9/7/2024 1:10:53PM

START TIME 9/7/2024 1:10:53PM

Operator:

END TIME 9/7/2024 1:49:05PM

LSD#:

Ticket#:

Licence #:

Other:

Contractor:

Other:

AFE:

Comments:



Casing (PSI)								
Time								
13:10	49.646	629						
13:10	54.646	628						
13:10	59.646	629						
13:11	4.646	628						
13:11	9.647	629						
13:11	14.646	629						
13:11	19.646	628						
13:11	24.646	629						
13:11	29.646	628						
13:11	34.646	627						
13:11	39.646	628						
13:11	44.647	628						
13:11	49.646	628						
13:11	54.646	629						
13:11	59.646	628						
13:12	4.646	627						
13:12	9.646	629						
13:12	14.646	628						
13:12	19.647	627						
13:12	24.646	627						
13:12	29.646	628						
13:12	34.646	629						
13:12	39.646	629						
13:12	44.646	627						
13:12	49.646	629						
13:12	54.647	628						
13:12	59.646	627						
13:13	4.646	628						
13:13	9.646	629						
13:13	14.646	628						
13:13	19.646	626						
13:13	24.646	628						
13:13	29.647	628						
13:13	34.646	628						
13:13	39.646	628						
13:13	44.646	628						
13:13	49.646	628						
13:13	54.646	628						
13:13	59.646	628						
13:14	4.647	627						
13:14	9.646	628						
13:14	14.646	627						
13:14	19.646	627						
13:14	24.646	628						
13:14	29.646	629						
13:14	34.646	628						
13:14	39.647	628						
13:14	44.646	628						

Casing (PSI)								
Time								
13:14	49.646	628						
13:14	54.646	627						
13:14	59.646	628						
13:15	4.646	627						
13:15	9.646	629						
13:15	14.647	627						
13:15	19.646	627						
13:15	24.646	627						
13:15	29.646	628						
13:15	34.646	627						
13:15	39.646	627						
13:15	44.646	629						
13:15	49.647	627						
13:15	54.646	628						
13:15	59.646	627						
13:16	4.646	628						
13:16	9.646	627						
13:16	14.646	628						
13:16	19.646	627						
13:16	24.647	627						
13:16	29.646	628						
13:16	34.646	627						
13:16	39.646	627						
13:16	44.646	627						
13:16	49.646	627						
13:16	54.646	628						
13:16	59.647	626						
13:17	4.646	627						
13:17	9.646	627						
13:17	14.646	627						
13:17	19.646	628						
13:17	24.646	628						
13:17	29.646	626						
13:17	34.647	626						
13:17	39.646	627						
13:17	44.646	626						
13:17	49.646	627						
13:17	54.646	626						
13:17	59.646	626						
13:18	4.646	626						
13:18	9.647	628						
13:18	14.646	628						
13:18	19.646	627						
13:18	24.646	628						
13:18	29.646	627						
13:18	34.646	627						
13:18	39.646	627						
13:18	44.647	626						

Casing (PSI)								
Time								
13:18	49.646	627						
13:18	54.646	629						
13:18	59.646	626						
13:19	4.646	627						
13:19	9.646	626						
13:19	14.646	627						
13:19	19.647	628						
13:19	24.646	626						
13:19	29.646	627						
13:19	34.646	627						
13:19	39.646	626						
13:19	44.646	628						
13:19	49.646	629						
13:19	54.647	627						
13:19	59.646	628						
13:20	4.646	628						
13:20	9.646	627						
13:20	14.646	628						
13:20	19.646	628						
13:20	24.646	627						
13:20	29.647	626						
13:20	34.646	627						
13:20	39.646	628						
13:20	44.646	629						
13:20	49.646	627						
13:20	54.646	626						
13:20	59.646	628						
13:21	4.647	626						
13:21	9.646	629						
13:21	14.646	627						
13:21	19.646	627						
13:21	24.646	626						
13:21	29.646	627						
13:21	34.646	626						
13:21	39.647	626						
13:21	44.646	626						
13:21	49.646	626						
13:21	54.646	628						
13:21	59.646	627						
13:22	4.646	627						
13:22	9.646	627						
13:22	14.647	626						
13:22	19.646	627						
13:22	24.646	626						
13:22	29.646	625						
13:22	34.646	627						
13:22	39.646	628						
13:22	44.646	628						

13:22:49

Detailed Job Breakdown

September/07/2024

Casing (PSI)								
Time								
13:22	49.647	626						
13:22	54.646	626						
13:22	59.646	626						
13:23	4.646	627						
13:23	9.646	627						
13:23	14.646	626						
13:23	19.646	626						
13:23	24.647	627						
13:23	29.646	627						
13:23	34.646	627						
13:23	39.646	627						
13:23	44.646	627						
13:23	49.646	626						
13:23	54.646	626						
13:23	59.647	627						
13:24	4.646	627						
13:24	9.646	626						
13:24	14.646	626						
13:24	19.646	627						
13:24	24.646	626						
13:24	29.646	626						
13:24	34.647	626						
13:24	39.646	626						
13:24	44.646	627						
13:24	49.646	627						
13:24	54.646	626						
13:24	59.646	627						
13:25	4.646	628						
13:25	9.647	627						
13:25	14.646	628						
13:25	19.646	627						
13:25	24.646	626						
13:25	29.646	626						
13:25	34.646	626						
13:25	39.646	627						
13:25	44.647	626						
13:25	49.646	627						
13:25	54.646	626						
13:25	59.646	626						
13:26	4.646	626						
13:26	9.646	626						
13:26	14.646	627						
13:26	19.647	627						
13:26	24.646	627						
13:26	29.646	626						
13:26	34.646	627						
13:26	39.646	627						
13:26	44.646	627						

Casing (PSI)								
Time								
13:26	49.646	626						
13:26	54.647	627						
13:26	59.646	627						
13:27	4.646	627						
13:27	9.646	625						
13:27	14.646	627						
13:27	19.646	626						
13:27	24.646	626						
13:27	29.647	627						
13:27	34.646	625						
13:27	39.646	626						
13:27	44.646	626						
13:27	49.646	626						
13:27	54.646	625						
13:27	59.646	626						
13:28	4.647	626						
13:28	9.646	627						
13:28	14.646	625						
13:28	19.646	626						
13:28	24.646	626						
13:28	29.646	627						
13:28	34.646	627						
13:28	39.647	627						
13:28	44.646	627						
13:28	49.646	627						
13:28	54.646	627						
13:28	59.646	628						
13:29	4.646	628						
13:29	9.646	628						
13:29	14.647	626						
13:29	19.646	627						
13:29	24.646	628						
13:29	29.646	628						
13:29	34.646	627						
13:29	39.646	627						
13:29	44.646	628						
13:29	49.647	628						
13:29	54.646	627						
13:29	59.646	627						
13:30	4.646	627						
13:30	9.646	629						
13:30	14.646	628						
13:30	19.646	628						
13:30	24.647	629						
13:30	29.646	627						
13:30	34.646	628						
13:30	39.646	626						
13:30	44.646	629						

Casing (PSI)								
Time								
13:30	49.646	628						
13:30	54.646	628						
13:30	59.647	627						
13:31	4.646	628						
13:31	9.646	626						
13:31	14.646	627						
13:31	19.646	628						
13:31	24.646	628						
13:31	29.646	628						
13:31	34.647	627						
13:31	39.646	629						
13:31	44.646	628						
13:31	49.646	627						
13:31	54.646	627						
13:31	59.646	627						
13:32	4.646	628						
13:32	9.647	628						
13:32	14.646	627						
13:32	19.646	627						
13:32	24.646	629						
13:32	29.646	627						
13:32	34.646	627						
13:32	39.646	627						
13:32	44.647	628						
13:32	49.646	628						
13:32	54.646	627						
13:32	59.646	628						
13:33	4.646	627						
13:33	9.646	627						
13:33	14.646	627						
13:33	19.647	627						
13:33	24.646	628						
13:33	29.646	627						
13:33	34.646	628						
13:33	39.646	628						
13:33	44.646	627						
13:33	49.646	627						
13:33	54.647	627						
13:33	59.646	627						
13:34	4.646	627						
13:34	9.646	628						
13:34	14.646	628						
13:34	19.646	627						
13:34	24.646	628						
13:34	29.647	626						
13:34	34.646	629						
13:34	39.646	627						
13:34	44.646	626						

Casing (PSI)								
Time								
13:34	49.646	627						
13:34	54.646	625						
13:34	59.646	626						
13:35	4.647	627						
13:35	9.646	627						
13:35	14.646	627						
13:35	19.646	626						
13:35	24.646	626						
13:35	29.646	626						
13:35	34.646	628						
13:35	39.647	627						
13:35	44.646	628						
13:35	49.646	628						
13:35	54.646	627						
13:35	59.646	627						
13:36	4.646	627						
13:36	9.646	628						
13:36	14.647	627						
13:36	19.646	626						
13:36	24.646	626						
13:36	29.646	626						
13:36	34.646	627						
13:36	39.646	627						
13:36	44.646	626						
13:36	49.647	626						
13:36	54.646	626						
13:36	59.646	626						
13:37	4.646	625						
13:37	9.646	626						
13:37	14.646	625						
13:37	19.646	626						
13:37	24.647	625						
13:37	29.646	625						
13:37	34.646	625						
13:37	39.646	625						
13:37	44.646	623						
13:37	49.646	626						
13:37	54.646	624						
13:37	59.647	625						
13:38	4.646	625						
13:38	9.646	625						
13:38	14.646	625						
13:38	19.646	624						
13:38	24.646	624						
13:38	29.646	627						
13:38	34.647	626						
13:38	39.646	626						
13:38	44.646	626						

13:38:49

Detailed Job Breakdown

September/07/2024

Casing (PSI)								
Time								
13:38	49.646	625						
13:38	54.646	625						
13:38	59.646	626						
13:39	4.646	626						
13:39	9.647	626						
13:39	14.646	626						
13:39	19.646	625						
13:39	24.646	626						
13:39	29.646	626						
13:39	34.646	626						
13:39	39.646	626						
13:39	44.647	625						
13:39	49.646	626						
13:39	54.646	625						
13:39	59.646	626						
13:40	4.646	625						
13:40	9.646	626						
13:40	14.646	625						
13:40	19.646	624						
13:40	24.646	624						
13:40	29.646	626						
13:40	34.646	626						
13:40	39.646	626						
13:40	44.646	625						
13:40	49.646	623						
13:40	54.646	624						
13:40	59.646	626						
13:41	4.646	626						
13:41	9.646	625						
13:41	14.646	624						
13:41	19.646	625						
13:41	24.646	625						
13:41	29.646	624						
13:41	34.646	625						
13:41	39.646	625						
13:41	44.646	626						
13:41	49.646	625						
13:41	54.646	625						
13:41	59.646	626						
13:42	4.646	625						
13:42	9.646	626						
13:42	14.646	625						
13:42	19.646	627						
13:42	24.646	626						
13:42	29.646	625						
13:42	34.646	625						
13:42	39.646	625						
13:42	44.646	626						

Casing (PSI)								
Time								
13:42	49.646	624						
13:42	54.646	625						
13:42	59.646	624						
13:43	4.646	610						
13:43	9.646	622						
13:43	14.646	594						
13:43	19.646	603						
13:43	24.646	581						
13:43	29.647	583						
13:43	34.646	567						
13:43	39.646	563						
13:43	44.646	548						
13:43	49.646	539						
13:43	54.646	529						
13:43	59.646	511						
13:44	4.647	512						
13:44	9.646	488						
13:44	14.646	487						
13:44	19.646	470						
13:44	24.646	462						
13:44	29.646	447						
13:44	34.646	438						
13:44	39.647	425						
13:44	44.646	416						
13:44	49.646	406						
13:44	54.646	393						
13:44	59.646	385						
13:45	4.646	372						
13:45	9.646	364						
13:45	14.647	349						
13:45	19.646	339						
13:45	24.646	329						
13:45	29.646	315						
13:45	34.646	307						
13:45	39.646	290						
13:45	44.646	281						
13:45	49.647	266						
13:45	54.646	257						
13:45	59.646	245						
13:46	4.646	235						
13:46	9.646	222						
13:46	14.646	212						
13:46	19.646	200						
13:46	24.647	192						
13:46	29.646	182						
13:46	34.646	171						
13:46	39.646	164						
13:46	44.646	151						

Casing (PSI)								
Time								
13:46	49.646	146						
13:46	54.646	137						
13:46	59.647	127						
13:47	4.646	120						
13:47	9.646	112						
13:47	14.646	103						
13:47	19.646	96						
13:47	24.646	86						
13:47	29.646	80						
13:47	34.647	74						
13:47	39.646	66						
13:47	44.646	60						
13:47	49.646	54						
13:47	54.646	47						
13:47	59.646	43						
13:48	4.646	36						
13:48	9.647	32						
13:48	14.646	27						
13:48	19.646	22						
13:48	24.646	16						
13:48	29.646	13						
13:48	34.646	8						
13:48	39.646	5						
13:48	44.647	1						
13:48	49.646	0						
13:48	54.646	0						
13:48	59.646	0						
13:49	4.646	0						

Sante Fe Main Office  
Phone: (505) 476-3441

General Information  
Phone: (505) 629-6116

Online Phone Directory  
<https://www.emnrd.nm.gov/oed/contact-us>

State of New Mexico  
Energy, Minerals and Natural Resources  
Oil Conservation Division  
1220 S. St Francis Dr.  
Santa Fe, NM 87505

CONDITIONS

Action 413478

CONDITIONS

Operator: EOG RESOURCES INC 5509 Champions Drive Midland, TX 79706	OGRID: 7377
	Action Number: 413478
	Action Type: [C-103] Sub. Temporary Abandonment (C-103U)

CONDITIONS

Created By	Condition	Condition Date
gcordero	None	1/23/2025