

Santa Fe Main Office

Phone: (505) 476-3441 Fax: (55) 476-3462

General Information

Phone: (505) 629-6116

Online Phone Directory Visit:

<https://www.emnrd.nm.gov/ocd/contact-us/>State of New Mexico
Energy, Minerals and Natural ResourcesForm C-103
Revised July 18, 2013OIL CONSERVATION DIVISION
1220 South St. Francis Dr.
Santa Fe, NM 87505

WELL API NO. 30-015-39400
5. Indicate Type of Lease STATE <input checked="" type="checkbox"/> FEE <input type="checkbox"/>
6. State Oil & Gas Lease No.
7. Lease Name or Unit Agreement Name Nash Unit
8. Well Number 53
9. OGRID Number 005380
10. Pool name or Wildcat SWD; Devonian
11. Elevation (Show whether DR, RKB, RT, GR, etc.) 2999' GL

SUNDRY NOTICES AND REPORTS ON WELLS
(DO NOT USE THIS FORM FOR PROPOSALS TO DRILL OR TO DEEPEN OR PLUG BACK TO A DIFFERENT RESERVOIR. USE "APPLICATION FOR PERMIT" (FORM C-101) FOR SUCH PROPOSALS.)

1. Type of Well: Oil Well ☐ Gas Well ☒ Other SWD

2. Name of Operator

XTO Energy Inc.

3. Address of Operator

6401 Holiday Hill Rd Bldg 5, Midland TX 79707

4. Well Location

Unit Letter H : 1620' feet from the North line and 1120' feet from the East line
Section 13 Township 23S Range 29E NMPM County Eddy

12. Check Appropriate Box to Indicate Nature of Notice, Report or Other Data

NOTICE OF INTENTION TO:

PERFORM REMEDIAL WORK ☐ PLUG AND ABANDON ☐TEMPORARILY ABANDON ☐ CHANGE PLANS ☐PULL OR ALTER CASING ☐ MULTIPLE COMPL ☐DOWNHOLE COMMINGLE ☐CLOSED-LOOP SYSTEM ☐OTHER: ☐

SUBSEQUENT REPORT OF:

REMEDIAL WORK ☒ ALTERING CASING ☐COMMENCE DRILLING OPNS. ☐ P AND A ☐CASING/CEMENT JOB ☐OTHER: ☐

13. Describe proposed or completed operations. (Clearly state all pertinent details, and give pertinent dates, including estimated date of starting any proposed work). SEE RULE 19.15.7.14 NMAC. For Multiple Completions: Attach wellbore diagram of proposed completion or recompletion.

XTO Energy Inc. respectfully requests approval for the subsequent workover/tbg repair of the above mentioned well. Please see attached Workover Summary Report, Current Wellbore Diagram, Approved NMOCD Witnessed Post workover MIT, and Post workover NMOCD witnessed BHT.

Spud Date:

10/08/2011

Rig Release Date:

01/02/2012

I hereby certify that the information above is true and complete to the best of my knowledge and belief.

SIGNATURE Kristen Houston TITLE Regulatory Analyst DATE 1/20/2025Type or print name Kristen Houston E-mail address: kristen.houston@exxonmobil.com PHONE: (432)894-1588**For State Use Only**

APPROVED BY: _____ TITLE _____ DATE _____

Conditions of Approval (if any):

Nash Unit 53 SWD API 30-015-39400 Post Workover Summary

10/19/2024 – 10/26/2024: MIRU.

10/27/2024: RU TWG w/ 5-1/2" 5K Lube. PU 2.25" GR/JB, 2.125" CCL, 2" WB. Pres Test Lube to 1200 psi. No External Leaks. Rih w/ GR/JB to Log thru HES 7" BWS Pkr at 14,807' and Ratch Latch SA at 14,805'. Pooh. PU 1.68" Kick Sub, 1.55" RTG Gun (1.9/16" OD, 3.2 GR, .39 EOD, .25"-.375" Pent. 7 Shot), 1.55" Address Sub, 2.125" CCL, 2" WB. Pres Test Lube to 1200 psi. Rih w/ RTG Tbg Punch. Down and Correlate to Tbg Cplgs. Pkr at 14,807'. SA at 14,805'. Tbg 600 psi. Csg 650 psi. Spot and Perf 7 shots at 14,800'. Tbg 650 psi, Csg 650 Psi. Pooh. ASC. RDMO TWG. Tbg 650 psi, Csg 650 Psi. Pressure to 1300 psi. Slow bleed off to 900. Flow 10.5 bbls in 10 min. Csg 50 psi. SITP 615 psi. 2nd 10 min Csg flow .45 bbl. Csg to 0 psi. SITP 610 psi. Shut in and Secure Well. Monitor SIP's 10 min SITP 610, SICP 200 psi.

10/28/2024: Decision made to Kill tbg. Pump 255 bbls down tbg. This time csg flow as pump down tbg. Flow back at .25-.31. Shut down pump.

10/29/2024: MIRU TWG. 5-1/2" 5K Lube. PU 2nd) 2" Wt Bars, 1.38" CCL, 1-9/16" RTG tbg punch. Pres Test Lube. Rih. Correlate and Spot to Perf at 14,750'. Begin pump 5 bpm at 650 psi. Shoot Tbg Punch. Had some drag to move gun but no communication. Pooh. Work and Rock pump. No Success in Circ. Discuss w/ Team. Decision to perf again. Rih w/ 3rd Tbg Punch. Correlate and SPot Perf at 14,550'. Pump 5.7 bpm at 750 psi. Shoot Tbg Punch. Have Circ up csg. Pmp 5.8 at 700 psi. Shut down pump. Still have flow up csg. Pooh and RD TWG.

10/30/2024: MU 9487 Spear w/ 3.947" GR w/ X-overs and 3-1/2" IF Pup Jt. Unable to get into 4-1/2". Swap to 3.88" GR. Spear 4-1/2". PU on 4-1/2". Start moving at 160K. PU 18". Land hanger. Retrieve Spear.

10/31/2024: PU RIH with spear 3.88 and pull-on hanger to 195 k moved up 67 in land hanger back and remove spear ND bop and switch out bops from 78 in to 33 in bop 11" 5 k

Pick up spear and pull-on hanger 195 k and set 4 1/2 slips break off hanger and change out to test hanger land hanger remove spear Pressure test bop hi 4500 low 300 test good RD sonic equip SECURE SWI SDFD.

11/1/2024: MIRU TWG and rig up Equip PT Lub 1500 hi 300 low RIH w stuck pipe log from 14,671 to 14,550 POOH w tools PU 3.125 weight bar and CCL. RIH to TOP @ 14,800 rig down TWG and pick up equip SWI SDFD.

11/2/2024: MIRU acid Tech and flow Equip Drop 3 in dissolvable ball CIRC Pump 10 frac ball 7/8 and establish circulating rate pumped 95 bbls caught circulation pumped 450 bbls recovered 105 bbls shut down pumped 100 down casing well on vacuum 7 bbls 650 psi RDMO acid tech and equip SECURE SWI SDFD.

11/5/2024: MIRU WLU RIH w 3.125 ccl and 1 11/16 weight bars to 14,800 pooh ld tools Rih with stuck pipe log to 14,800 still same results stuck from 14,670 - 14,800 RDMO wireline and equip SECURE SWI SDFD.

11/7/2024: PU spear and spear 4 1/2 tbg. PU to 190k. Pipe parted at 338.85'. LD 338.85' of 4 1/2 tbg. RIH tag top of fish very lightly. 363.5'. MIRU WLU Test WL Lube with no success. O rings leaking in several spot. RD and repair WL SWI SDFD.

11/8/2024: Pre Tour-Briefing. Pre-Task Briefing. Check Dogs, Check Brakes. Set Posi Stop. Good. MIRU WLU /Test Lube 1500 psig. Good test Original HoleRIH tag TOF @ 362'. Cont. RIH to 14,715' w 3.52 GR. Pull strip to confirm where to cut at 14,675'. POOH RIH tag TOF @ 362'.Cont. RIH to 14,715' w 3.52 GR. Pull strip to con firm where to cut at 14,675'. POOH

RIH tag top of fish very lightly. 363.5'. Dropped down over fish 2.5' ish. PU to 190k pipe isn't free at this wt. Work pipe 5 times from 190k to 150 k and down as far as 100k to 190k. 3 times. SECURE SWI SDFD

11/9/2024: MIRU WLU /Test Lube 1500 psig. Good test RIH tag TOF @ 362'. Cont. RIH to 10,000' w Free point tools. Calibrate tools. 100% free pipe. Make stops at 13,052' /14,000' / 14,506' / 14,642' all showing 100% free. Checked below cut at 14,688' showing 50% stuck. POOH. Rig up swivel Rotate at 3k torque working pipe from 140k to 185k. Getting occasional rotation. About 20 times in working pipe got 15 rounds. Still unable to pull free. Did straight pull to 210k w/ no rotation. SWI SDFD

11/10/2024: MIRU WLU /Test Lube 1500 psig. Good test RIH tag TOF @ 362'.Cont. RIH to 10,000' w Free point tools. Calibrate tools. 100% free pipe. Make stops at 13,052' /14,000' / 14,506' / 14,642' all showing 100% free. Checked below cut at 14,688' showing 50% stuck. POOH . Rig up swivel Rotate at 3k torque working pipe from 140k to 185k. Getting occasional rotation. About 20 times in working pipe got 15 rounds. Still unable to pull free. Did straight pull to 210k w/ no rotation. SWI SDFD.

11/12/2024: TOH LD INJ string 303 jnt's. (13,747' Pipe tally) PU 5 3/4 cut lip guide/ 5 3/4 Lower Ext./ 5 3/4 OS dressed with 4 1/2 grapple/ 4 13/16 control. / 5 3/4 upper extension/5 3/4 top bushing/ X over 4 1/4 LBS/4 1/4 Jar/ 4- 4 1/8 collars/ 4 1/4 accelerator/ x over / 99 jnt's 3 1/2 PH6. TIH. SWI SDFD.

11/13/2024: TIH. 5 3/4 cut lip guide/ 5 3/4 Lower Ext./ 5 3/4 OS dressed with 4 1/2 grapple/ 4 13/16 control. / 5 3/4 upper extension/5 3/4 top bushing/ X over 4 1/4 LBS/4 1/4 Jar/ 4- 4 1/8 collars/ 4 1/4 accelerator/ x over / 370 3 1/2 PH6. SWI SDFD

11/14/2024: TIH. 5 3/4 cut lip guide/ 5 3/4 Lower Ext./ 5 3/4 OS dressed with 4 1/2 grapple/ 4 13/16 control. / 5 3/4 upper extension/5 3/4 top bushing/ X over 4 1/4 LBS/4 1/4 Jar/ 4- 4 1/8 collars/ 4 1/4 accelerator/ x over / 370 3 1/2 PH6. Tagged TOF at 13,768'. Up WT. 168k / 154k down wt. Set down 20k once rotated over fish. Slid over fish 6.5'. PU to 188k fired jars 4 times, PU to 208k. Fired jars. Strait pulls to 240k. Repeat for 3 hrs.RU swivel Up wt bumper jar opens at 175k. PU to 198k. Fired jars. Strait pull to 260k 2 times w/ no success.

Halliburton PKR hand pulled 16k over string wt to 191k put 11 rounds to the right w/ 4600 ft lbs of torque. Worked pipe from 160k to 210k 20 times and up to 240k 2 times. W/ no

success. Bumped down 3 times on os. Worked pipe wt from 160k to 180k. Appears we released OS. RD swivel TOH LD 5 jnt's SWI SDFD
11/15/2024: TOH LD 13,605' 3 1/2 PH6 12.95# WS. 1- accelerator, 4 drill collars, 1- jar, 1- LBS, 1- x over, Top sub, 1- upper extension, 1- Os, 1- Lower ext, 1- Fluted guide. SWI SDFD

11/16/2024: MIRU WL. Test PCE 1500 psi. Good test. RIH To 7" LT. Tagged at 10,630 WLM. Tag TOF at 13,743'. Got inside of 4 1/2 fish went down 26' to 13,769' tagged PO of TOF. Go back down to 13,900'. PO of TOF. Go back down to 14,000'. PO of TOF. Go back down to 14,140' tagged 3 times. PO of TOF. Dragging 200#'s over pull hung up at 13,946'. Pulled 3k came free. POH w/ WL. RDMO WL

11/19/2024: MIRU WL. Test PCE 1500 psi. Good test. RIH To 7" LT. Tagged at 10,630 WLM. Passed LT. Cont. RIH Tag TOF at 13,743'. Unable to get in TOF w/ 3.2" od GR and sponge jar. POH. Install 2.35 Tapered spear w/ 1.69 Tool string RIH to 14,814 Inside PKR. POH. Install 3.2" GRJB on sponge jar. RIH didn't tag TOF at 13,743'. Got inside of 4 1/2 fish went down to 14,184' tagged Beat down 1 time PU sticky. Went down 1 more time tagged up PU

above TOF. Can't get back inside TOF. Pumped 90 bbl's well never loaded. Go back down tagged up in 7" csg. POOH to check tools. Retrieved a 4.5" piece of OS grapple that had broke off while fishing. Hold WL meeting. Rehead WL. Prep Cutter to RIH and cut tbg. RD WL

11/20/2024: MIRU WL. RIH w/ 3.47 od WT bell premium cutter to 14,790' cut tbg. Down 3.5 hrs working on WL unit. Trying to get versafire to work. Change out shooting panel. POOH. Confirm cutter fired. All tools accounted for except bottom metal piece that is supposed to be left in the hole. RD WL TIH w/ 5 3/4" OD w a 4 1/2 id fluted guide. 5

3/4 lower extension, 5 3/4 OS W/ a 4 1/2 grapple and 4 11/16 control, 5 3/4 upper extension/, 5 3/4 top sub w/ 2 11/16 ID. SD OPS

11/21/2024: Cont Rih w/ 5-3/4" OS (4-1/2" GR) on 3-1/2" PH6 WS. Ran 284 jts. Cont Rih. Cont down to tag top of fish at 13,738' w/ jt #445 13' in. Secure Well w/ 444 jts in. EOT at 13,724'.

11/23/2024: Hold Point. RU Pwr Swivel w/ 444 jts 3-1/2" PH6 S-135 tbg in and Subs. Tag TOF at 13,738'. Rotate and Dress off TOF. Swallow and Latch onto Fish. HP. Work String Wt 140K down and 230K-250K up (60K-80K Over). HP. Pump 50 bbls CaCL down csg as cont Work String. 4-1/2" Separated. St Wt went from 250K to 200K. Pull up at 230K. HP. RD Pwr Swivel. Pull and LD 6 jts w/ String Wt coming down. Now pulling at 200K.

14:00 17:30 3.50 11.50 POOHHP. Set Pozi Stop. Cont Pooh w/ 3-1/2" PH6 S135 WS and Fish. Out with total of 122 jts. Have 322 jts in, OS at 9958'.

11/24/2024: Cont Pooh w/ 3.5 " WS Recovered all but 15' of Injection string (Total out now 326-jts and cut). 2 perf jts and 1 failed cut. Left in hole 15' of 4.5' tbg w/ perf and Latched Seal Assy. TOF at 14,772'. After action and SWI

11/25/2024: Pres Test Bop (21 Day). Land 11" 5m Test Hanger. Pres Test Pipes-- 300 low 5 min. 3000 high 5 min. Pres Test Blinds-- 300 low 5 min, 3000 high 5 min. Good Test. Pull Hanger. PU OS Assy of 5-3/4" Shoe w/ 4-1/2" Fluted ID Top. 5-3/4" Bushing, 5-3/4" BOS Lower Ext, 53/4" BOS OS w/ 4-1/2" GR 6112 (RHW), 5-3/4" BOS Upper Ext. 5-3/4" BOS Top Sub, 6' x 31/2" PH^ tbg sub, X-over, 4-1/4" LBS, 4-1/4" Jar, X-over. 8' x 3-1/2" PH6 Tbg Sub

Rih w/ Bha on 118 jts 3-1/2" WS. Secure Well. AAR

11/26/2024: Cont Rih w/ 5-3/4" OS (4-1/2" GR / RHW) on 31/2" WS. Tagged 7" LT, 3' up #343

At 10,650' Cont Rih w/ 5-3/4" OS (4-1/2" GR / RHW) on 31/2" WS. Rig up Pwr Swivel. Secure Well for night.

11/27/2024: Pump 15 bbls CaCl2 down Tbg. Pump 50 bbls CaCl2 as Work Shoe over TOF at 14,781.8'. Work Flute over TOF. Wash shoe down to 14,788'. Flute at 14,783.5'. Quit making hole. 3.6' in of 10' sub and 477 jts WS. RD Pwr Swivel. And Subs. Pooh w/ WS. LD 37-jts and STD back - Jts Shut in and Secure Well.

11/28/2024: Fin Pooh w/ 3-1/2" PH6 Work String AAR and Secure Well. Tear down BHA. Found the Flutes were built on a ring and installed in top of shoe. TOF set down on Ring and Was Spinning.

12/3/2024: Measure/OD/ID check BOP. PU Burn over shoe 5.95" OD w/ 4.48" Fluted guide 7.80', 10' of 5.75" wash pipe, Top bushing 3 1/2 IF box / 5 3/4 wash pipe thread w/ 2.25" id, X over, 4.25 LBS, 4.25 Jar, TIH w/ Wash over equipment. 3 1/2 ws. AAR and Secure Well.

12/4/2024: Cont. TIH w/ Burn over shoe 5.95" OD w/ 4.48" Fluted guide 7.80', 10' of 5.75" wash pipe, Top bushing 3 1/2 IF box / 5 3/4 wash pipe thread w/ 2.25" id, X over, 4.25 LBS, 4.25 Jar, Rig up swivel. Wash over TOF @14,783' wash down to 14,800'. Took 40 minutes to mill off TOF. Up wt 180k down wt 171k. Mill w/bumper sub open 30 min. w/ 1k wt on fish for 10 min. Washed over TOF 3 Times not having any drag or issues last 3 times. Went all the over TOF 1 time w/o rotating. AAR and Secure Well.

12/5/2024: Rig Down swivel. TOH w/ Wash over BHA. AAR and Secure Well.

12/6/2024: TOH w/ Wash over BHA. Tear down BHA/PU BHA TIH w/ 5 3/4 os loaded with 4 1/2 LHW grapple. TIH w/ 11,510' 3 1/2 ph6 (383 jnt's) AAR and Secure Well.

12/7/2024: TIH w/ 5 3/4 os loaded with 4 1/2 LHW grapple. TIH to TOF at 14,783'. MIRU RU swivel. Space w/ 17' of subs. PU wt is 178k. Tagged at 14,783'. PU no over pull. Rotated 45 min. w/ 3k on fish. PU over pulled 4k. Continue same ops. Over pulled 8k 4 times. Started bumping down on OS with bumper sub. every 30 min. W/ No success. Latching grapple. Over pulled 10k. Bumped down w/ bumper sub- PU to 178k Turned 4 rounds pu to 180k lost 3k wt slowly pu over pulling to 181k at 14 rounds Lost over pull. LD subs. RD swivel. AAR and Secure Well.

12/8/24: TOH w/ 5 3/4 os loaded with 4 1/2 LHW grapple. TOH w/ 268 jnt's. EOT 6670'.

AAR and Secure Well.

12/9/2024: TOH w/ 5 3/4 os loaded with 4 1/2 LHW grapple / 16.37' 4 1/2 fish, SA.

Secure Fish with wedding band/ winch line. LD fish. Tear down fishing tools Check OD/ID/Length of Dummy SA and Sealing area compared to the old SA. TIH w/ Halliburton SA. AAR and Secure Well.

12/10/2024: TIH w/ Halliburton SA. Tag PKR at 14,801'. Set down 40k on SA. Try to load csg. pumped 104 bbl's at 3 bbl's a min. CSG filled up. SD pump CSG on vacuum. Pumped 127 total bbl's csg still on a vacuum. Shut BOP and TIW.

12/11/2024: Shoot Fluid level. TBG/CSG 650' equalized. Original Hole Unsting from pkr. PU 8'. MIRU Acid tech. Test Pump iron. Pumped 10 bbls 10.6 KWF. 20k Gallons of emulsified blend acid 90/10/ of 15% hcl and xylene at 6 bbl's a min at 3600 psi/SICP was 220 psi at highest point. 130 bbls flush 10.6# kwf. ISIP was vacuum. RDMO Acid tech

Tag PKR at 14,801'. PU rotate down into PKR w/ SA Set down 45k on SA.

Flush csg 30 bbl's 3 bbl a min. Try to load csg. pumped 77 bbl's at 3 bbl's a min. CSG wouldn't load up. SD pump CSG on vacuum. Shut BOP and TIW.

12/12/2024: Unsting from pkr. PU 8'. TOH w/ SA and 79 jnt's and 100 stands. AAR and Secure Well.

12/13/2024: TOH w/ SA and 79 jnt's and 100 stands MIRU WL RIH w/ 5.812 JBGR to 10,630' Tightened into liner top. 10,630' corrected - 12'. WLM.RIH tagged pkr at 14,813' WLM. POH. RD WL. Check RBP and setting tool threads and ensure makeup. Check and repair versifier.

All equipment checked good

12/14/2024: MIRU WL RIH w/ 5.812 RBP to 10,630' to liner top. 10,630' corrected -12'. WLM.RIH set RBP at 14,792' WLM. POH. RD WL. Test BOP. 4k high on pipe rams/Blinds and 300 psi low. Good test.

12/15/2024: MIRU WL RIH w/ 5.51 retrieving head to 10,621' to liner top. BLM.RIH Retrieve RBP at 14,786' WLM. Beat down 4 times equalize plug. Well, is on a vacuum. Wait 20 min. Beat plug free with spang jars equalized. POH. LD RBP. RD WL.

12/17/2024: MIRU WL RIH w/ 2.13 ccl and 1.69" od wt bars. Tagged at 14,818 unable to get all the way through the pkr. POH. PU 2.13 spud, 1.5 spang jars, 1.69 wt bars and 2.13 ccl. RIH to 14,818' unable to pass through pkr. Jared on spot 20 times got hung up twice over pulled 700#'s. POH. PU RIH w/ 5.85 Halliburton BWR Permanent nickel coated pkr. W/ 8" stinger 3.85" od w/ 2.95 ID. Tag at 14,816' wt fell off moved down. Appears stinger went inside PKR. Set pkr. WT was 3050#'s burn time 39 seconds. After PKR set WT is 2,720#'s. POH. Pulled Collar strip from PKR set.

12/18/2024: WO SA to AOL from Halliburton Make up Halliburton Dummy SA. 3.82 OD. TIH w/ 200 stands. or 12,360'.

12/19/2024: Inspect Tubing Line. Found Multiple Bad Spots in Tubing Line. Unable to Change today.

12/20/2024: Changeout Tbg line. TIH/w 25 jts 3.5" tbg EOT 13131' RIH/w total of 470 jts 3.5" tbg Crew break Cont Rih w. 3-1/2" Tbg. Tag Packer Top at 14,809'. Space out w/ 8' PH6 tbg sub and 479jts in. Fill annulus w/ 48 bbls CaCl2. FL at 815'. Pres to 900 psi. Held 15 min- Bleed off. Pres to 1400 psi. Held for 15 min. Bleed off. Air is out of csg. Shut in Well. AAR.

12/21/2024: Pres Test TCA / PKR / SA to 1000 psi for 30 min. Lost 9 Psi, 1002 psi to 993 psi. Good. Bleed Off. Hold Point. Move LD Machine. Release from HalCo BWS Pkr at 14,802'. Begin Pooh as LD 3-1/2" Tbg WS. Cont LD as Pooh w/ 3-1/2" PH6 WS. Have total of 224 jts out, 255 jts in. EOT 7854'. Shut in and Secure Well, AAR

12/22/2024: Cont Pooh as LD 3-1/2" PH6 Work String. 411 total out. Drill - BOP / LEL Drill.

Cont Pooh as LD 3-1/2" PH6 Work String. LD Seal Assy. Btm Set Seals bad (Some missing). Upper Seals Good. Locating splines good. Shut in and Secure Well. Prep Location for Inj String.

12/23/2024: Spot in and RU Tbg. Spot in 4-1/2" 13.5# L-80 BTCKCTK-15XTIPC csg onto Racks. Meas, Drift and Clean 4-1/2" to Rih. PU 1st jt. Dead Stick Test Torque. MU HES

BWS Seal Assy for 7" x 4-1/2" BWS Packer w/ Torque Turn. MU and RIH w/ 4-1/2" Inj String. Ran 42 jts 4 1/2" 13.5# L-80BTC KC XT-15KT. Cont Rih w/ 4-1/2" 13.5# BTC KC. Have 147-jts total in (71 jts L-80 and 76 jts P-110). Shut in and Secure Well.

12/24/2024: Cont Rih w/ HES BWS Seal Assy for 7" x 4-1/2" BWS Packer w/ Torque Turn. MU and RIH w/ 4-1/2" Inj String. Ran 53 jts 4-1/2" 13.5# L-80 BTC KC XT-15K today. Total 200 jts total in hole. Found some bare 4-1/2" P-110 cplgs, not KC. NOV does not have any more P-110. Shut down here and order for 1/3/24

1/3/2025: Unload Pipe. Tally/Drift clean pipe. Cont Rih w/ HES BWS Seal Assy for 7" x 4-1/2"

BWS Packer w/ Torque Turn. MU and RIH w/ 4-1/2" Inj String. Ran 53 jts 4-1/2" 13.5# L-80

BTC KC XT-15K today. Total 272 jts total in hole. Found 2 bad 4-1/2" P-110 ipc tbg. Shut in and Secure Well.

1/5/2025: Cont Rih w/ HES BWS Seal Assy for 7" x 4-1/2" BWS Packer w/ Torque Turn. MU and RIH w/ 4-1/2" Inj String. Ran 328 jts 4-1/2" 13.5# L-80 BTC .Tag TOP at 14,809' tbg measurement. Up wt 180k -172k down. Space out w/ 4-1/2" Inj String. Ran 327 jts 4-1/2" 13.5# L-80 BTC pu KC XT-15K, Pup jnt's 4.12' - 8.03' - 9.93 - 12.01' 4.20' hgr and sub 4-1/2" 13.5# L-80 BTC KC XT-15K set depth is 14,809' Top of pkr. 49k setting on pkr. TBG was run in this order (71-jts L-80, 130 jts P-110, 19-jts L-80 , 107 jts P110.ND BOP/NU Tree. Test/Chart tree to 4500 psig. Test void 4000 psi. visual Good test. Test csg/Pkr to 517psi. 32 min. psi. actually, went up 10 psi. Good test.

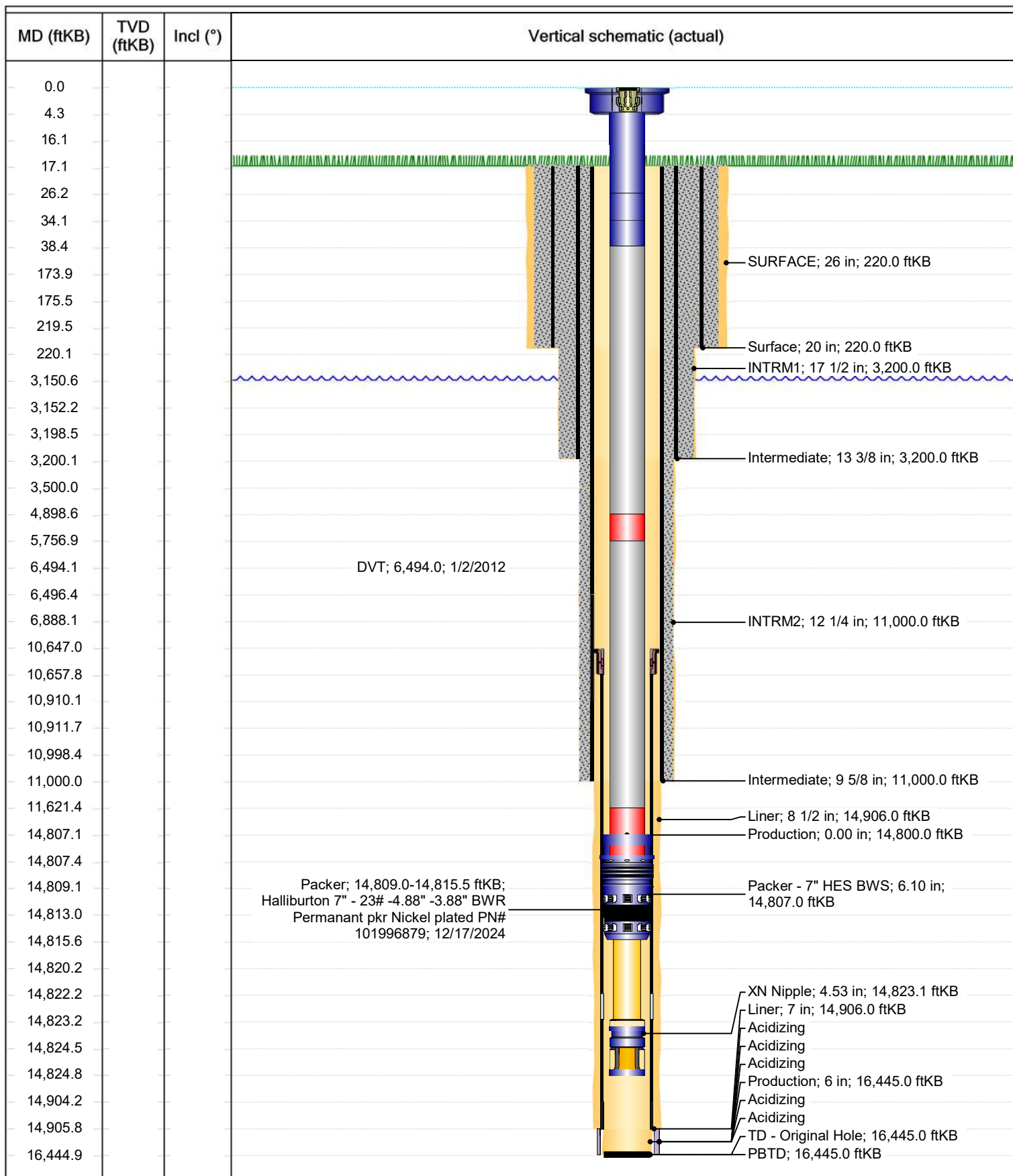
1/9/2025: MIT & BHT witnessed by NMOCD by Ronald H.



Schematic - Vertical with Perfs

Well Name: Nash Unit 053 SWD

API/UWI 3001539400	SAP Cost Center ID 1055491001	Permit Number	State/Province New Mexico	County Eddy
Surface Location T23S-R29E-S13	Spud Date 10/8/2011 22:00	Original KB Elevation (ft) 3,016.00	Ground Elevation (ft) 2,999.00	KB-Ground Distance (ft) 17.00



Southern District
1625 N French Dr, Hobbs, NM 88240
Phone: (575) 241-7063

State of New Mexico
Energy, Minerals and Natural Resources Department
Oil Conservation Division Hobbs District Office

BRADENHEAD TEST REPORT

Operator Name XTO ENERGY, INC		API Number 30-015-39400	
Property Name NASH UNIT SWD		Well No. #053	

1. Surface Location

UL - Lot H	Section 13	Township 23S	Range 29E	Feet from 1620	N/S Line N	Feet From 1120	E/W Line E	County EDDY
----------------------	----------------------	------------------------	---------------------	--------------------------	----------------------	--------------------------	----------------------	-----------------------

Well Status

TA'D WELL YES	<input type="radio"/> NO	<input checked="" type="radio"/> YES	SHUT-IN NO	INJ	INJECTOR <input checked="" type="radio"/> SWD	OIL	PRODUCER GAS	DATE 1/9/2025
------------------	--------------------------	--------------------------------------	---------------	-----	--	-----	-----------------	-------------------------

OBSERVED DATA

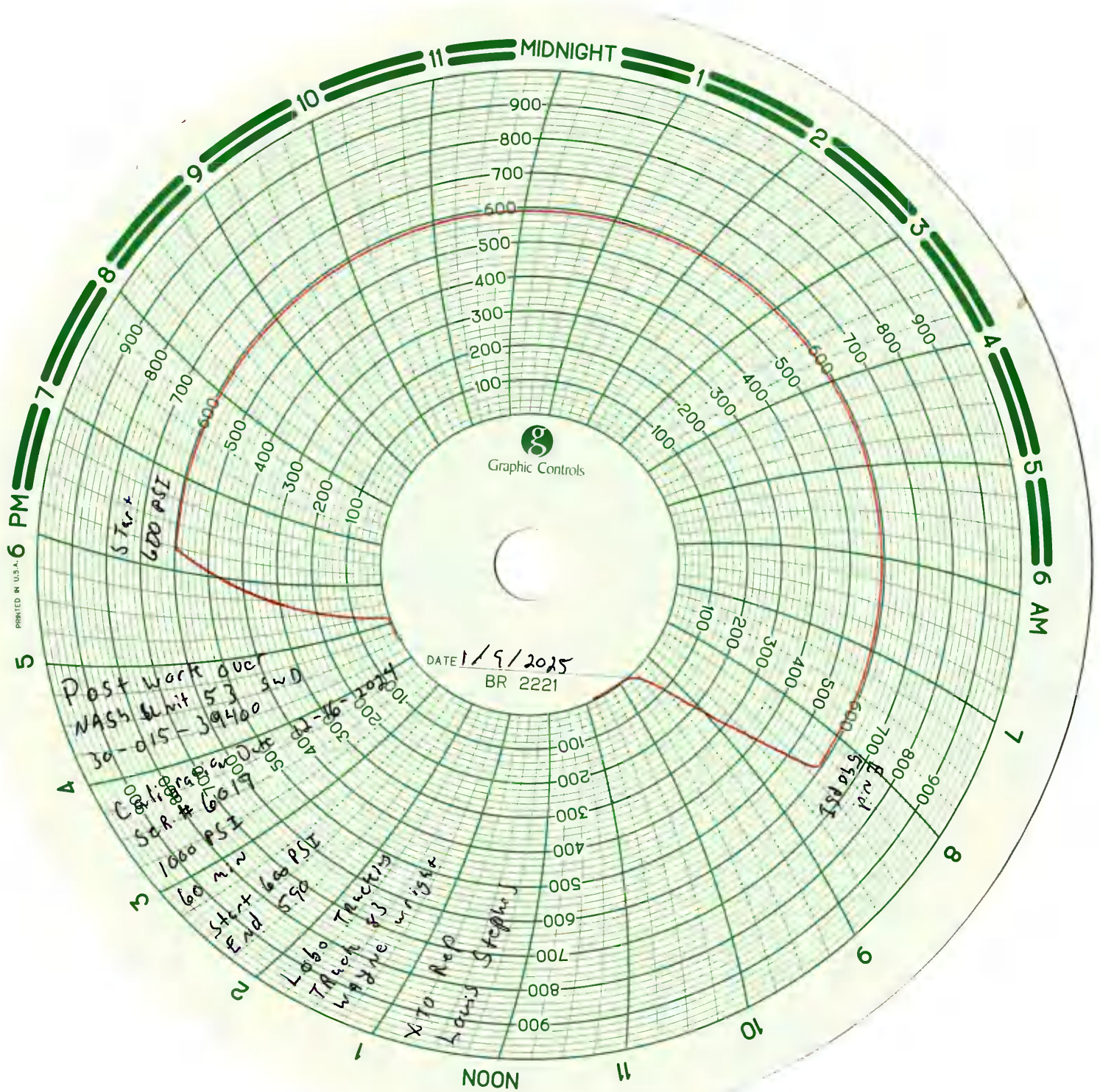
	(A) Surface	(B) Interim(1)	(C) Interim(2)	(D) Prod Casing	(E) Tubing
Pressure	CEMENTED IN	0		0	1
Flow Characteristics					
Puff	Y / N	Y / <input checked="" type="radio"/> N	Y / N	Y / <input checked="" type="radio"/> N	CO2
Steady Flow	Y / N	Y / <input checked="" type="radio"/> N	Y / N	Y / <input checked="" type="radio"/> N	WTR X
Surges	Y / N	Y / <input checked="" type="radio"/> N	Y / N	Y / <input checked="" type="radio"/> N	GAS
Down to nothing	Y / N	<input checked="" type="radio"/> Y / N	Y / N	<input checked="" type="radio"/> Y / N	Type of Fluid
Gas or Oil	Y / N	Y / <input checked="" type="radio"/> N	Y / N	Y / <input checked="" type="radio"/> N	Injected for
Water	Y / N	Y / <input checked="" type="radio"/> N	Y / N	Y / <input checked="" type="radio"/> N	Waterflood if applies

Remarks - Please state for each string (A,B,C,D,E) pertinent information regarding bleed down or continuous build up if applies.

PWO BHT OK
SURFACE CASING IS CEMENTED IN.

Signature:		OIL CONSERVATION DIVISION	
Printed name:		Entered into RBDMS	
Title:		Re-test	
E-mail Address:			
Date:	Phone:		
Witness: Raymond Hesse			

INSTRUCTIONS ON BACK OF THIS FORM



Sante Fe Main Office
Phone: (505) 476-3441

General Information
Phone: (505) 629-6116

Online Phone Directory
<https://www.emnrd.nm.gov/oed/contact-us>

State of New Mexico
Energy, Minerals and Natural Resources
Oil Conservation Division
1220 S. St Francis Dr.
Santa Fe, NM 87505

CONDITIONS

Action 422574

CONDITIONS

Operator: XTO ENERGY, INC 6401 Holiday Hill Road Midland, TX 79707	OGRID: 5380
	Action Number: 422574
	Action Type: [C-103] Sub. Workover (C-103R)

CONDITIONS

Created By	Condition	Condition Date
mgebremichael	None	1/27/2025