

U.S. Department of the Interior  
BUREAU OF LAND MANAGEMENT

**Well Name:** FLORANCE

**Well Location:** T29N / R9W / SEC 21 /  
NESE / 36.708359 / -107.777817

**County or Parish/State:** SAN  
JUAN / NM

**Well Number:** 84

**Type of Well:** CONVENTIONAL GAS  
WELL

**Allottee or Tribe Name:**

**Lease Number:** NMSF080246

**Unit or CA Name:**

**Unit or CA Number:**

**US Well Number:** 3004511637

**Operator:** HILCORP ENERGY  
COMPANY

### Subsequent Report

**Sundry ID:** 2842894

**Type of Submission:** Subsequent Report

**Type of Action:** Plug and Abandonment

**Date Sundry Submitted:** 03/24/2025

**Time Sundry Submitted:** 07:24

**Date Operation Actually Began:** 03/17/2025

**Actual Procedure:** Hilcorp Energy Company has plugged and abandoned the subject on 3/20/2025 per the attached report.

### SR Attachments

#### Actual Procedure

Florance\_84\_P\_A\_SR\_BLM\_Submitted\_20250324072426.pdf

Well Name: FLORANCE

Well Location: T29N / R9W / SEC 21 /  
NESE / 36.708359 / -107.777817County or Parish/State: SAN  
JUAN / NM

Well Number: 84

Type of Well: CONVENTIONAL GAS  
WELL

Allottee or Tribe Name:

Lease Number: NMSF080246

Unit or CA Name:

Unit or CA Number:

US Well Number: 3004511637

Operator: HILCORP ENERGY  
COMPANY**Operator**

I certify that the foregoing is true and correct. Title 18 U.S.C. Section 1001 and Title 43 U.S.C. Section 1212, make it a crime for any person knowingly and willfully to make to any department or agency of the United States any false, fictitious or fraudulent statements or representations as to any matter within its jurisdiction. Electronic submission of Sundry Notices through this system satisfies regulations requiring a

Operator Electronic Signature: PRISCILLA SHORTY

Signed on: MAR 24, 2025 07:24 AM

Name: HILCORP ENERGY COMPANY

Title: Regulatory Technician

Street Address: 382 ROAD 3100

City: AZTEC

State: NM

Phone: (505) 324-5188

Email address: PSHORTY@HILCORP.COM

**Field**

Representative Name:

Street Address:

City:

State:

Zip:

Phone:

Email address:

**BLM Point of Contact**

BLM POC Name: MATTHEW H KADE

BLM POC Title: Petroleum Engineer

BLM POC Phone: 5055647736

BLM POC Email Address: MKADE@BLM.GOV

Disposition: Accepted

Disposition Date: 03/24/2025

Signature: Matthew Kade

FLORANCE 84

30.045.11637

PLUG AND ABANDONMENT

**3/17/2025** - RIG MOVE RIG & CMT EQUIP TO LOCATION. (8 MILES) SPOT EQUIP. LOTO. RU RIG & CMT EQUIP. SDFN. DRAIN EQUIPMENT. CLEAN & SECURE LOCATION. DEBRIEF CREW. SDFN.

**3/18/2025** - CK PSI: TBG-0#, CSG-50#, BH-0#. BDW 5 MINS. FUNCTION TEST BOP, ND WH. NU BOP. RU RF & TBG EQUIP. JSA, RU & NU DRAKE WL. RIH W/ GR TO 2120'. LD GR. RIH WITH CIBP. S&R CIBP @ 2090' LD SETTING TOOL. ATTEMPT TO LOAD WELL WITH 40 BBLS OF FW. UNABLE TO LOAD WELL. APPROVAL TO SET ANOTHER CIBP @ 2089'. ATTEMPT TO LOAD WELL W 35 BBLS. UNABLE TO LOAD WH. SIW, SDFN DRAIN EQUIP. CLEAN & SECURE LOCATION. GARRICK LEE, BLM REP, ON LOCATION. SDFN.

**3/19/2025** - CK PSI; TBG-0#, CSG-VAC, BH-0#. BDW 0 MIN. RU DRAKE WL. RIH W/ GR AND TAG FLUID @ 1983'. LD GR RD WL. TALLY & PU 1.25" IJ WORK STRING. RIH W/TS TO 2090' ATTEMPT TO EST CIRC. NO CIRC. **PLUG #1 M&P 30 SKS OF CLASS G CEMENT, 15.8PPG, 1.15 YIELD, 6.1BLSRY, 1.8DIS.** LD TOC. TOOH, SIW. WOC. TIH **TAG TOC @ 1880'. HEC ENGINEER SENT AN EMAIL DOCUMENTING VERBAL APPROVAL TO TOP OFF PLUG #1 AFTER TAGGING @ 1880' AND IT WILL NOT BE TAGGED.** EST CIRC WITH 8 BBLS OF FW. PUMP 20 TOTAL. PSI TEST CSG TO 300# PSI FOR 10 MINS. TEST OK. TOOH. LD TS. LOAD CSG WITH 3 BBLS OF FW. PSI TEST CSG TO 560# PSI FOR 30 MNS, TEST OK. RU DRAKE WL. RIH WITH CBL TOOL LOG WELL FROM 180' TO SURFACE. LD LOG TOOL. RD WL. TIH WITH TS TO 1880'. **PLUG 1B M&P 16 SKS OF CLASS G CEMENT, 15.8PPG, 1.15YIELD, 3.2BLSRY, 2.8DIS.** LD TOC. REVERSE OUT. LD TBG TO PLUG #2. GARRICK LEE, BLM REP, ON LOCATION. SDFN.

**3/20/2025** -CK PSI: TBG-0#, CSG-0#, BH-0#, BDW 0 MINS. **PLUG #2 M&P 25 SKS OF CLASS G CEMENT, 15.8PPG, 1.15YIELD, 5.1BLSRY, 2.9MIX. 1.2DIS.** LD TOC. **HEC ENGINEER SENT AN EMAIL DOCUMENTING VERBAL APPROVAL TO PERF @ 90' AFTER THE RESULTS OF THE CBL.** REVERSE OUT. LD ALL TBG. JSA RU & NU DRAKE WL. RIH W/TG & PERF 4 HOLES @ 90'. PUMP 5 BBLS TO EST CIRC. PUMP 20 TOTAL. RD WL. PUP TO 165'. **PLUG #3 M&P 84 SKS OF CLASS G CEMENT, 15.8PPG, 1.15 YIELD, 17.2BLSRY, 10MIX, CIRC CEMENT TO SURF.** LD ALL TBG. RD RIG FLOOR & TBG EQUIP, ND BOP NU WH. SIW, WOC. DIG OUT WH, CUT & REMOVE WH. FIND TOC @ 5'. WELD & INSTALL DHM @ 36", 42, 32" / 107", 46', 42" W. TOP OFF CELLAR WITH 13 SKS OF CLASS G CEMENT 1.15YIELD, 15.8PPG. LUCAS MASON, BLM REP, ON LOCATION. RD RIG & CMT EQUIP. CLEAN & SECURE LOCATION. MOL.

**WELL WAS PLUGGED AND ABANDONED ON 3/20/2025.**

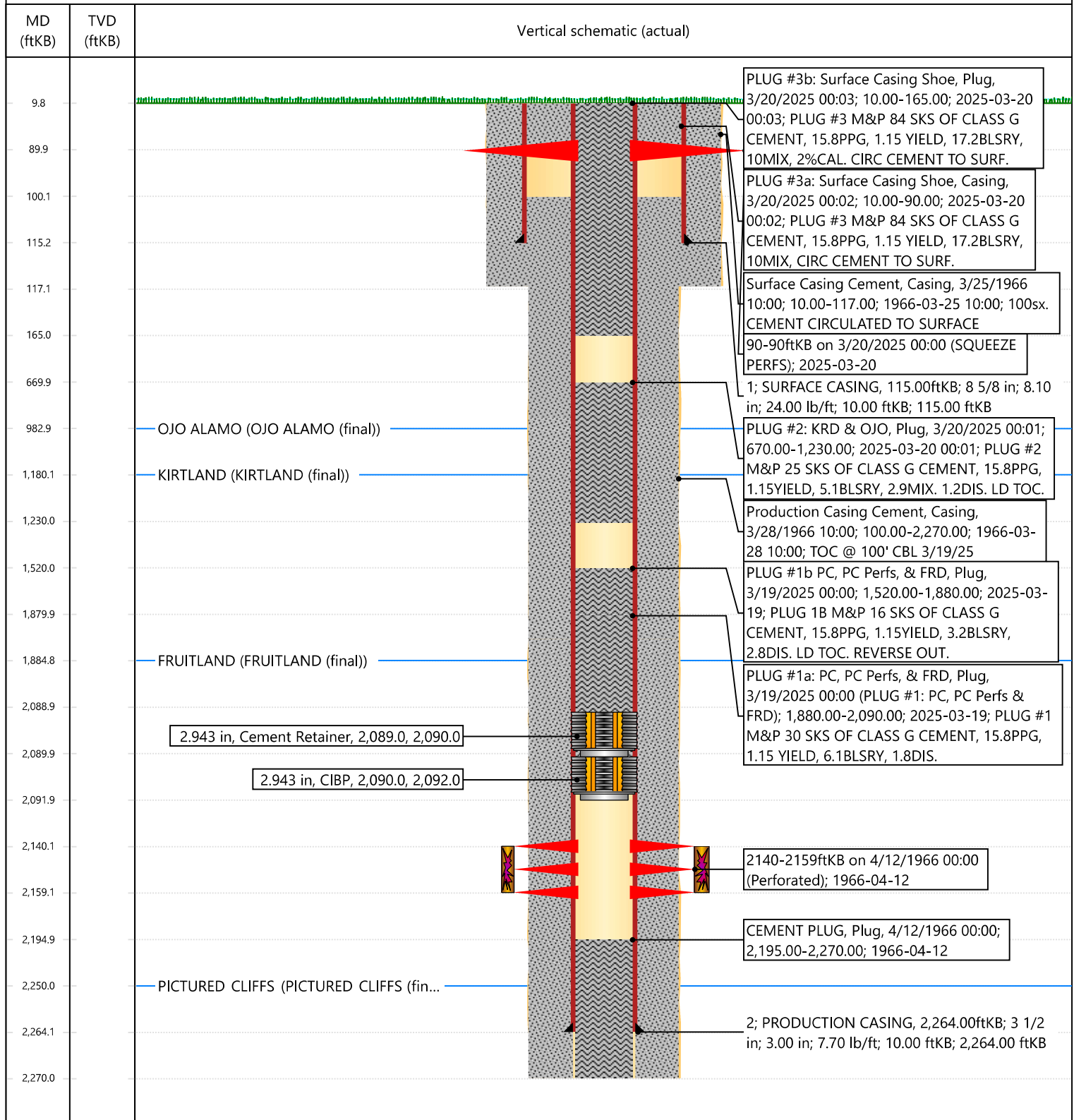


## Current Schematic - Version 3

Well Name: FLORANCE 084

API / UWI 3004511637	Surface Legal Location 021-029N-009W-I	Field Name PC	Route 0802	State/Province NEW MEXICO	Well Configuration Type Vertical
Ground Elevation (ft) 5,678.00	Original KB/RT Elevation (ft) 5,688.00	Tubing Hanger Elevation (ft) 5,678.00	RKB to GL (ft) 10.00	KB-Casing Flange Distance (ft) 10.00	KB-Tubing Hanger Distance (ft) 10.00
<b>Tubing Strings</b>					
Run Date	Set Depth (ftKB)	String Max Nominal OD (in)	String Min Nominal ID (in)	Weight/Length (lb/ft)	Original Spud Date

## Original Hole [Vertical]



**Priscilla Shorty**

**From:** Kade, Matthew H <mkade@blm.gov>  
**Sent:** Thursday, March 20, 2025 8:51 AM  
**To:** Joe Zimmerman; Rennick, Kenneth G; Kuehling, Monica, EMNRD; Lee, Garrick L  
**Cc:** Farmington Regulatory Techs; Clay Padgett; Lee Murphy; John LaMond; Diede, Loren, EMNRD; Knapowski, Aleksandr J; Gage, Walter J; Mason, Lucas E; Lucero, Virgil S; Oscar Sanchez - (C)  
**Subject:** Re: [EXTERNAL] P&A Revision Request for Hilcorp's FLORANCE 84 (API # 3004511637)  
**Categories:** ME!!

**CAUTION:** External sender. DO NOT open links or attachments from UNKNOWN senders.

The BLM approves of moving forward with this plan for the surface plug.

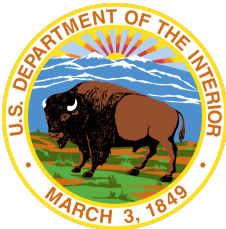
Thanks,

**Matthew Kade**

*Petroleum Engineer* | Bureau of Land Management

Farmington Field Office | 6251 College Blvd., Suite A / Farmington, NM 87402

Office: 505-564-7736



**From:** Joe Zimmerman <Joseph.Zimmerman@hilcorp.com>  
**Sent:** Thursday, March 20, 2025 8:37 AM  
**To:** Rennick, Kenneth G <krennick@blm.gov>; Kuehling, Monica, EMNRD <monica.kuehling@emnrd.nm.gov>; Kade, Matthew H <mkade@blm.gov>; Lee, Garrick L <glee@blm.gov>  
**Cc:** Farmington Regulatory Techs <FarmingtonRegulatoryTechs@hilcorp.com>; Clay Padgett <cpadgett@hilcorp.com>; Lee Murphy <lmurphy@hilcorp.com>; John LaMond <jlamond@hilcorp.com>; Diede, Loren, EMNRD <Loren.Diede@emnrd.nm.gov>; Knapowski, Aleksandr J <aknapowski@blm.gov>; Gage, Walter J <WGage@blm.gov>; Mason, Lucas E <lmason@blm.gov>; Lucero, Virgil S <vlucero@blm.gov>; Oscar Sanchez - (C) <Oscar.Sanchez@hilcorp.com>  
**Subject:** RE: [EXTERNAL] P&A Revision Request for Hilcorp's FLORANCE 84 (API # 3004511637)

Matthew/Monica,

As discussed, we will perforate the surface plug at 90', instead of 165', due to the CBL showing good cement to 90'. We will then run tubing down to 165' and attempt to circulate from there. Whether we circulate or not, we will WOC before cutting the WH and topping off.

FYI – I also added yesterday's changes to this original email chain so it's all in one place.

Thanks,

- Joe Z.

---

**From:** Kade, Matthew H [mkade@blm.gov](mailto:mkade@blm.gov)

**Sent:** Wednesday, March 19, 2025 10:21 PM

**To:** Joe Zimmerman [Joseph.Zimmerman@hilcorp.com](mailto:Joseph.Zimmerman@hilcorp.com); Rennick, Kenneth G [krennick@blm.gov](mailto:krennick@blm.gov); Kuehling, Monica, EMNRD [monica.kuehling@emnrd.nm.gov](mailto:monica.kuehling@emnrd.nm.gov); Lee, Garrick L [glee@blm.gov](mailto:glee@blm.gov)

**Cc:** Farmington Regulatory Techs [FarmingtonRegulatoryTechs@hilcorp.com](mailto:FarmingtonRegulatoryTechs@hilcorp.com); Clay Padgett [cpadgett@hilcorp.com](mailto:cpadgett@hilcorp.com); Lee Murphy [lmurphy@hilcorp.com](mailto:lmurphy@hilcorp.com); John LaMond [jlamond@hilcorp.com](mailto:jlamond@hilcorp.com); Mason, Lucas E [lmason@blm.gov](mailto:lmason@blm.gov); Lucero, Virgil S [vlucero@blm.gov](mailto:vlucero@blm.gov); Oscar Sanchez - (C) [Oscar.Sanchez@hilcorp.com](mailto:Oscar.Sanchez@hilcorp.com)

**Subject:** Re: [EXTERNAL] FLORANCE 84 (API #3004511637) P&A

**CAUTION:** External sender. DO NOT open links or attachments from UNKNOWN senders.

The BLM approves of this plan. If the hole does not stay static after pumping the plug, then Hilcorp will have to wait and tag.

As this breaks from the approved procedure and typical BLM practice, I appreciate the email follow up.

If anyone has any questions, please call me.

Thanks,

**Matthew Kade**

*Petroleum Engineer* | Bureau of Land Management

Farmington Field Office | 6251 College Blvd., Suite A / Farmington, NM 87402

Office: 505-564-7736



---

**From:** Joe Zimmerman <[Joseph.Zimmerman@hilcorp.com](mailto:Joseph.Zimmerman@hilcorp.com)>

**Sent:** Wednesday, March 19, 2025 5:57 PM

**To:** Kade, Matthew H <[mkade@blm.gov](mailto:mkade@blm.gov)>; Rennick, Kenneth G <[krennick@blm.gov](mailto:krennick@blm.gov)>; Kuehling, Monica, EMNRD <[monica.kuehling@emnrd.nm.gov](mailto:monica.kuehling@emnrd.nm.gov)>

**Cc:** Farmington Regulatory Techs <[FarmingtonRegulatoryTechs@hilcorp.com](mailto:FarmingtonRegulatoryTechs@hilcorp.com)>; Clay Padgett <[cpadgett@hilcorp.com](mailto:cpadgett@hilcorp.com)>; Lee Murphy <[lmurphy@hilcorp.com](mailto:lmurphy@hilcorp.com)>; John LaMond <[jlamond@hilcorp.com](mailto:jlamond@hilcorp.com)>; Mason, Lucas E <[lmason@blm.gov](mailto:lmason@blm.gov)>; Lucero, Virgil S <[vlucero@blm.gov](mailto:vlucero@blm.gov)>; Porch, Dustin T <[dporch@blm.gov](mailto:dporch@blm.gov)>; Oscar Sanchez - (C) <[Oscar.Sanchez@hilcorp.com](mailto:Oscar.Sanchez@hilcorp.com)>

**Subject:** [EXTERNAL] FLORANCE 84 (API #3004511637) P&A



**This email has been received from outside of DOI - Use caution before clicking on links, opening attachments, or responding.**

Matthew,

As discussed, after tagging plug #1 today at 1,880' and achieving a good pressure test, we will top off plug #1 with an additional 16 sacks to bring estimated TOC to 1,520', not WOC, and then move on to pump plug #2 as planned.

Thanks,

- Joe Z.

---

**From:** Rennick, Kenneth G <krennick@blm.gov>

**Sent:** Thursday, January 23, 2025 3:55 PM

**To:** Joe Zimmerman <Joseph.Zimmerman@hilcorp.com>; Kuehling, Monica, EMNRD <monica.kuehling@emnrd.nm.gov>; Kade, Matthew H <mkade@blm.gov>

**Cc:** Farmington Regulatory Techs <FarmingtonRegulatoryTechs@hilcorp.com>; Clay Padgett <cpadgett@hilcorp.com>; Lee Murphy <lmurphy@hilcorp.com>; Diede, Loren, EMNRD <Loren.Diede@emnrd.nm.gov>; Knapowski, Aleksandr J <aknapowski@blm.gov>; Gage, Walter J <WGage@blm.gov>; John LaMond <jlamond@hilcorp.com>

**Subject:** Re: [EXTERNAL] P&A Revision Request for Hilcorp's FLORANCE 84 (API # 3004511637)

**CAUTION:** External sender. DO NOT open links or attachments from UNKNOWN senders.

The BLM finds the updated procedure appropriate.

Kenneth (Kenny) Rennick

Petroleum Engineer

Bureau of Land Management  
Farmington Field Office  
6251 College Blvd  
Farmington, NM 87402

Email: [krennick@blm.gov](mailto:krennick@blm.gov)

Mobile & Text: 505.497.0019

---

**From:** Joe Zimmerman <[Joseph.Zimmerman@hilcorp.com](mailto:Joseph.Zimmerman@hilcorp.com)>

**Sent:** Thursday, January 23, 2025 1:42 PM

**To:** Rennick, Kenneth G <[krennick@blm.gov](mailto:krennick@blm.gov)>; Kuehling, Monica, EMNRD <[monica.kuehling@emnrd.nm.gov](mailto:monica.kuehling@emnrd.nm.gov)>; Kade, Matthew H <[mkade@blm.gov](mailto:mkade@blm.gov)>

**Cc:** Farmington Regulatory Techs <[FarmingtonRegulatoryTechs@hilcorp.com](mailto:FarmingtonRegulatoryTechs@hilcorp.com)>; Clay Padgett <[cpadgett@hilcorp.com](mailto:cpadgett@hilcorp.com)>;

Lee Murphy <[lmurphy@hilcorp.com](mailto:lmurphy@hilcorp.com)>; Diede, Loren, EMNRD <[Loren.Diede@emnrd.nm.gov](mailto:Loren.Diede@emnrd.nm.gov)>; Knapowski, Aleksandr J <[aknapowski@blm.gov](mailto:aknapowski@blm.gov)>; Gage, Walter J <[WGage@blm.gov](mailto:WGage@blm.gov)>; John LaMond <[jlamond@hilcorp.com](mailto:jlamond@hilcorp.com)>

**Subject:** RE: [EXTERNAL] P&A Revision Request for Hilcorp's FLORANCE 84 (API # 3004511637)

Hi Kenny,

Following our conversation, I have made the below changes to the procedure, that the NMOCD also agreed with. I have also attached the updated procedure.

- Fruitland top now at 1,650' with top of cement at 1,550'.
- Ojo Alamo top now at 820' with top of cement at 720'.

Thanks,

- Joe Z.

---

**From:** Rennick, Kenneth G <[krennick@blm.gov](mailto:krennick@blm.gov)>

**Sent:** Thursday, January 23, 2025 12:43 PM

**To:** Joe Zimmerman <[Joseph.Zimmerman@hilcorp.com](mailto:Joseph.Zimmerman@hilcorp.com)>; Kuehling, Monica, EMNRD

<[monica.kuehling@emnrd.nm.gov](mailto:monica.kuehling@emnrd.nm.gov)>; John LaMond <[jlamond@hilcorp.com](mailto:jlamond@hilcorp.com)>; Kade, Matthew H <[mkade@blm.gov](mailto:mkade@blm.gov)>

**Cc:** Farmington Regulatory Techs <[FarmingtonRegulatoryTechs@hilcorp.com](mailto:FarmingtonRegulatoryTechs@hilcorp.com)>; Clay Padgett <[cpadgett@hilcorp.com](mailto:cpadgett@hilcorp.com)>;

Lee Murphy <[lmurphy@hilcorp.com](mailto:lmurphy@hilcorp.com)>; Diede, Loren, EMNRD <[Loren.Diede@emnrd.nm.gov](mailto:Loren.Diede@emnrd.nm.gov)>; Knapowski, Aleksandr J

<[aknapowski@blm.gov](mailto:aknapowski@blm.gov)>; Gage, Walter J <[WGage@blm.gov](mailto:WGage@blm.gov)>

**Subject:** Re: [EXTERNAL] P&A Revision Request for Hilcorp's FLORANCE 84 (API # 3004511637)

**CAUTION:** External sender. DO NOT open links or attachments from UNKNOWN senders.

Hello Joe,

We actually had a discussion on this well this morning. The BLM is requesting that Hilcorp provide cement coverage for BLM selected tops. The Fruitland at 1650 (plug 1 top of cement at 1550) and Ojo Alamo at 820 (plug 2 top of cement at 720).

Feel free to let us know if you want to discuss.

Kenny Rennick

Kenneth (Kenny) Rennick

Petroleum Engineer

Bureau of Land Management

Farmington Field Office

6251 College Blvd

Farmington, NM 87402



Email: [krennick@blm.gov](mailto:krennick@blm.gov)  
Mobile & Text: 505.497.0019

---

**From:** Joe Zimmerman <[Joseph.Zimmerman@hilcorp.com](mailto:Joseph.Zimmerman@hilcorp.com)>  
**Sent:** Thursday, January 23, 2025 9:58 AM  
**To:** Kuehling, Monica, EMNRD <[monica.kuehling@emnrd.nm.gov](mailto:monica.kuehling@emnrd.nm.gov)>; John LaMond <[jlamond@hilcorp.com](mailto:jlamond@hilcorp.com)>; Rennick, Kenneth G <[krennick@blm.gov](mailto:krennick@blm.gov)>; Kade, Matthew H <[mkade@blm.gov](mailto:mkade@blm.gov)>  
**Cc:** Farmington Regulatory Techs <[FarmingtonRegulatoryTechs@hilcorp.com](mailto:FarmingtonRegulatoryTechs@hilcorp.com)>; Clay Padgett <[cpadgett@hilcorp.com](mailto:cpadgett@hilcorp.com)>; Lee Murphy <[lmurphy@hilcorp.com](mailto:lmurphy@hilcorp.com)>  
**Subject:** RE: [EXTERNAL] P&A Revision Request for Hilcorp's FLORANCE 84 (API # 3004511637)

Matthew/Kenny,

Did you all get a chance to review the revisions for this well?

- Joe Z.

---

**From:** Kuehling, Monica, EMNRD <[monica.kuehling@emnrd.nm.gov](mailto:monica.kuehling@emnrd.nm.gov)>  
**Sent:** Thursday, January 9, 2025 3:54 PM  
**To:** John LaMond <[jlamond@hilcorp.com](mailto:jlamond@hilcorp.com)>; 'Rennick, Kenneth G' <[krennick@blm.gov](mailto:krennick@blm.gov)>; 'Kade, Matthew H' <[mkade@blm.gov](mailto:mkade@blm.gov)>  
**Cc:** Farmington Regulatory Techs <[FarmingtonRegulatoryTechs@hilcorp.com](mailto:FarmingtonRegulatoryTechs@hilcorp.com)>; Clay Padgett <[cpadgett@hilcorp.com](mailto:cpadgett@hilcorp.com)>; Joe Zimmerman <[Joseph.Zimmerman@hilcorp.com](mailto:Joseph.Zimmerman@hilcorp.com)>; Lee Murphy <[lmurphy@hilcorp.com](mailto:lmurphy@hilcorp.com)>  
**Subject:** RE: [EXTERNAL] P&A Revision Request for Hilcorp's FLORANCE 84 (API # 3004511637)

**CAUTION:** External sender. DO NOT open links or attachments from UNKNOWN senders.

NMOCD approves below with prior approval from the BLM

Thank you

Monica Kuehling  
Compliance Officer Supervisor  
Deputy Oil and Gas Inspector  
New Mexico Oil Conservation Division  
North District  
Cell Phone: 505-320-0243  
Email - [monica.kuehling@emnrd.nm.gov](mailto:monica.kuehling@emnrd.nm.gov)

---

**From:** John LaMond <[jlamond@hilcorp.com](mailto:jlamond@hilcorp.com)>  
**Sent:** Thursday, January 9, 2025 10:09 AM  
**To:** Kuehling, Monica, EMNRD <[monica.kuehling@emnrd.nm.gov](mailto:monica.kuehling@emnrd.nm.gov)>; 'Rennick, Kenneth G' <[krennick@blm.gov](mailto:krennick@blm.gov)>; 'Kade, Matthew H' <[mkade@blm.gov](mailto:mkade@blm.gov)>

**Cc:** Farmington Regulatory Techs <[FarmingtonRegulatoryTechs@hilcorp.com](mailto:FarmingtonRegulatoryTechs@hilcorp.com)>; Clay Padgett <[cpadgett@hilcorp.com](mailto:cpadgett@hilcorp.com)>; Joe Zimmerman <[Joseph.Zimmerman@hilcorp.com](mailto:Joseph.Zimmerman@hilcorp.com)>; John LaMond <[jlamond@hilcorp.com](mailto:jlamond@hilcorp.com)>; Lee Murphy <[lmurphy@hilcorp.com](mailto:lmurphy@hilcorp.com)>

**Subject:** [EXTERNAL] P&A Revision Request for Hilcorp's FLORANCE 84 (API # 3004511637)

**CAUTION:** This email originated outside of our organization. Exercise caution prior to clicking on links or opening attachments.

Good morning Monica and Kenny,

Hilcorp is planning to work on the FLORANCE 84 (API # 3004511637) P&A in the near future.

I have attached the approved P&A NOI, as well as an updated procedure based on the COAs in the approved NOI.

Based on the COAs, Hilcorp requests the following adjustments to the approved procedure:

- The 3-1/2" CIBP originally to be set @ 2,130' will now set @ **2,090'** per verbal approval from the NMOCD & BLM.
- **PLUG #1: 13sx of Class G Cement (15.8 PPG, 1.15 yield); PC Top @ 2,250' | PC Perfs @ 2,140' | FRD Top @ 1,885':**
  - Pump a 13 sack balanced cement plug inside the 3-1/2" casing (est. **TOC @ +/- 1,785'** & est. **BOC @ +/- 2,090'**). Wait on Cement for 4 hours, tag TOC w/ work string. \*Note cement plug lengths & volumes account for excess.
- **PLUG #2: 15sx of Class G Cement (15.8 PPG, 1.15 yield); KRD Top @ 1,180' | OJO Top @ 983':**
  - Pump a 15 sack balanced cement plug inside the 3-1/2" casing (est. **TOC @ +/- 883'** & est. **BOC @ +/- 1,230'**). \*Note cement plug lengths & volumes account for excess.
- **PLUG #3: 49sx of Class G Cement (15.8 PPG, 1.15 yield); Surf. Casing Shoe @ 115':**
  - Pump 12sx of cement in the 3-1/2" casing X 7-7/8" open hole annulus (est. **TOC @ +/- 115'** & est. **BOC @ +/- 165'**). Continue pumping 30sx of cement in the 3-1/2" casing X 8-5/8" casing annulus (est. **TOC @ +/- 0'** & est. **BOC @ +/- 115'**). Pump a 7 sack balanced cement plug inside the 3-1/2" casing (est. **TOC @ +/- 0'** & est. **BOC @ +/- 165'**). WOC for 4 hrs, tag TOC w/ work string.
- Please see the revised procedure attached and below. The updated Proposed P&A wellbore schematic is also attached.



**HILCORP ENERGY COMPANY**  
**FLORANCE 84**  
**P&A NOI**

API #: 3004511637

**JOB PROCEDURES**

1. Contact NMOCD and BLM (where applicable) 24 hours prior to MIRU.
2. Hold pre-job safety meeting. Verify cathodic is off. Comply with all NMOCD, BLM, and HEC safety and environmental regulations.
3. MIRU service rig and associated equipment; NU and test BOP.
4. Set a **3-1/2" CIBP** at **+/- 2,090'** to isolate the **PC Perfs**.
5. Load the well as needed. Pressure test the casing above the plug to **560 psig**.
6. RU Wireline. Run CBL. Record Top of Cement. All subsequent plugs below are subject to change pending CBL results.
7. PU & TIH w/ work string to **+/- 2,090'**.
8. **PLUG #1: 13sx of Class G Cement (15.8 PPG, 1.15 yield); PC Top @ 2,250' | PC Perfs @ 2,140' | FRD Top @ 1,885':**  
 Pump a 13 sack balanced cement plug inside the 3-1/2" casing (est. **TOC @ +/- 1,785'** & est. **BOC @ +/- 2,090'**). Wait on Cement for 4 hrs. \*Note cement plug lengths & volumes account for excess.
9. POOH w/ work string to **+/- 1,230'**.
10. **PLUG #2: 15sx of Class G Cement (15.8 PPG, 1.15 yield); KRD Top @ 1,180' | OJO Top @ 983':**  
 Pump a 15 sack balanced cement plug inside the 3-1/2" casing (est. **TOC @ +/- 883'** & est. **BOC @ +/- 1,230'**). \*Note cement plug lengths & volumes account for excess.
11. TOOH w/ work string. TIH and perforate squeeze holes @ **+/- 165'**. TIH with tubing/work string.
12. **PLUG #3: 49sx of Class G Cement (15.8 PPG, 1.15 yield); Surf. Casing Shoe @ 115':**  
 Pump 12sx of cement in the 3-1/2" casing X 7-7/8" open hole annulus (est. **TOC @ +/- 115'** & est. **BOC @ +/- 165'**). Continue pumping 1/2" casing X 8-5/8" casing annulus (est. **TOC @ +/- 0'** & est. **BOC @ +/- 115'**). Pump a 7 sack balanced cement plug inside the 3-1/2" casing (est. **TOC @ +/- 165'**). WOC for 4 hrs, tag TOC w/ work string.
13. ND BOP, cut off casing below casing flange. Top off cement in surface casing annulus, if needed. Install a P&A marker with cement to cement the casing. Rig down, move off location, cut off anchors, and restore location.

Do the NMOCD and BLM approve of the revised procedure?

Thanks,

**John LaMond**

Operations Engineer – Technical Services

Hilcorp Energy Company

1111 Travis

Houston, TX 77002

346-237-2210 (Office)

832-754-9692 (Cell)

Sante Fe Main Office  
Phone: (505) 476-3441

General Information  
Phone: (505) 629-6116

Online Phone Directory  
<https://www.emnrd.nm.gov/ocd/contact-us>

State of New Mexico  
Energy, Minerals and Natural Resources  
Oil Conservation Division  
1220 S. St Francis Dr.  
Santa Fe, NM 87505

CONDITIONS

Action 444887

CONDITIONS

Operator: HILCORP ENERGY COMPANY 1111 Travis Street Houston, TX 77002	OGRID: 372171
	Action Number: 444887
	Action Type: [C-103] Sub. Plugging (C-103P)

CONDITIONS

Created By	Condition	Condition Date
mkuehling	CBL in log file - Well plugged 3/20/2025	3/27/2025