

Office
 District I – (575) 393-6161
 1625 N. French Dr., Hobbs, NM 88240
 District II – (575) 748-1283
 811 S. First St., Artesia, NM 88210
 District III – (505) 334-6178
 1000 Rio Brazos Rd., Aztec, NM 87410
 District IV – (505) 476-3460
 1220 S. St. Francis Dr., Santa Fe, NM
 87505

State of New Mexico
 Energy, Minerals and Natural Resources

Form C-103
 Revised July 18, 2013

OIL CONSERVATION DIVISION
 1220 South St. Francis Dr.
 Santa Fe, NM 87505

| | | |
|---|--|---|
| SUNDRY NOTICES AND REPORTS ON WELLS (DO NOT USE THIS FORM FOR PROPOSALS TO DRILL OR TO DEEPEN OR PLUG BACK TO A DIFFERENT RESERVOIR. USE "APPLICATION FOR PERMIT" (FORM C-101) FOR SUCH PROPOSALS.) | | WELL API NO. 30-025-24361 |
| 1. Type of Well: Oil Well <input type="checkbox"/> Gas Well <input type="checkbox"/> Other INJECTION | | 5. Indicate Type of Lease STATE <input checked="" type="checkbox"/> FEE <input type="checkbox"/> |
| 2. Name of Operator MORNINGSTAR OPERATING LLC | | 6. State Oil & Gas Lease No. |
| 3. Address of Operator 400 W 7TH ST, FORT WORTH, TX 76102 | | 7. Lease Name or Unit Agreement Name VACUUM GRAYBURG SAN ANDRES UNIT |
| 4. Well Location Unit Letter_G____:____2630____feet from the N____line and ____1330____feet from the ____E____line Section 01 Township 18S Range 34E NMPM County LEA | | 8. Well Number 035 |
| 11. Elevation (Show whether DR, RKB, RT, GR, etc.) 3988' | | 9. OGRID Number 330132 |
| | | 10. Pool name or Wildcat VACUUM; GRAYBURG-SAN ANDRES |

12. Check Appropriate Box to Indicate Nature of Notice, Report or Other Data

| NOTICE OF INTENTION TO: | SUBSEQUENT REPORT OF: |
|--|--|
| PERFORM REMEDIAL WORK <input type="checkbox"/> | REMEDIAL WORK <input type="checkbox"/> |
| TEMPORARILY ABANDON <input type="checkbox"/> | ALTERING CASING <input type="checkbox"/> |
| PULL OR ALTER CASING <input type="checkbox"/> | COMMENCE DRILLING OPNS. <input type="checkbox"/> |
| DOWNHOLE COMMINGLE <input type="checkbox"/> | P AND A <input checked="" type="checkbox"/> |
| CLOSED-LOOP SYSTEM <input type="checkbox"/> | CASING/CEMENT JOB <input type="checkbox"/> |
| OTHER: <input type="checkbox"/> | OTHER: <input type="checkbox"/> |

13. Describe proposed or completed operations. (Clearly state all pertinent details, and give pertinent dates, including estimated date of starting any proposed work). SEE RULE 19.15.7.14 NMAC. For Multiple Completions: Attach wellbore diagram of proposed completion or recompletion

MorningStar Operating has P&A'd the VGSAU 35 as of 02/05/2025. Attached are the Daily Reports and Final WBD.

Plug #1A and #1B: 40 sx cmt from 3501' - 4062', CIBP @ 4062'

Plug #2: 40 sx cmt plug from 2234' - 2862', Perf @ 2812'

Plug #3: 40 sx cmt plug from 1150' - 1700', Perf @ 1650'

Plug #4: 30 sx cmt plug from 605' - 950', Perf @ 900'.

Plug #5: 45 sx cmt plug from 0' - 605', Perf @ 407'.

Spud Date:

Rig Release Date:

I hereby certify that the information above is true and complete to the best of my knowledge and belief.

SIGNATURE Connie Blaylock TITLE Regulatory Analyst DATE 02/07/2025

Type or print name Connie Blaylock E-mail address: cblaylock@txoenergy.com PHONE: 817-334-7882

For State Use Only

APPROVED BY: _____ TITLE _____ DATE _____

Conditions of Approval (if any):

DAILY REPORTS P&A: VACUUM GRAYBURG SAN ANDRES #35 (LEA COUNTY, NM)

01/27/25: MIRUPU, Held 5" SM, 250 psig on well, Bled down to pit, Pumped 30 bbls brine down csg, Well running over, RU vac trk to well, NDWH, NUBOP. POOH LD 40 jts 2-3/8 IPC tbg, RU wireline, RIH with 3.75" guage ring to 4062'. POOH, PU RIH with 4-1/2" CIBP and set at 4062'. POOH RD wireline, SWN & SDON.

01/28/25: Held 5" SM, 50 psig on well, Bled down to pit, RU Jarrel wireline trk, RIH with CBL, Logged from 4062' to surface. RD wireline trk, RIH with tbg and tagged CIBP at 4062'. Spotted 40 sxs cement on CIBP to combine plugs 1 and 2 as per Bobby w/OCD. POOH with 80 jts tbg, WOC overnight, SWN & SDON.

01/29/25: Held 5", 75 psig on well, Bled down to pit, RIH tagged cement at 3501', POOH, RU wireline, RIH and perfed at 2812'. RD wireline, RIH with 4-1/2 packer and stacked out at 717'. POOH with tbg and packer. Packer had 2 slips turned out, Spoke with Bobby at NMOCD, He approved us to Drop down to 2862', spot 40 Sxs cement and WOC and tag. Also approved to perf at 1650', then drop down to 1700'and spot cement plug to cover to 1338'. RIH with tbg to 2862', SWN & SDON.

01/30/25: Held 5" SM, 50 psig on well, Bled down to pit, Broke circulation and spotted 40 sxs cement plug at 2862'. POOH with 60 jts tbg, WOC, RIH tagged cement at 2234'. POOH with tbg, RU wireline, RIH and perfed at 1650'. RD wireline , SWN & SDOWE due to high winds.

02/04/25: Held 5" SM, 50 psig on well, Bled down to pit, RIH with tbg to 1700', Spotted 40 sxs cement plug, POOH and WOC. RIH tagged TOC at 1150', POOH, RU wireline, perfed at 900' as per Bobby with NMOCD. RD wireline, RIH with packer to 450', Set packer and attempted to established injection rate. Pressured up to 750 psig, would bled down to 585 psig and hold. Spoke with Bobby at NMOCD and instructed us to drop down to 950' and spot 30 sxs cement. POOH and LD packer. RIH with tbg to 950',Spotted 30 sxs cement plug, POOH, Pumped 2 bbls water and left 550 psig on well. SWN & SDON.

02/05/25: Held 5" SM, 0 psig on well, RIH tagged top of cement at 605', POOH with tbg , RU wireline, Perfed at 407'. RD wireline, Attempted to establish pump in rate, well pressured up to 650 psig and held. RIH with tbg to 604', Spotted 45 sxs cement to surface, POOH LD tbg, NDBOP and performed 30 min bubble test. Tested good, RDPU, Dug out and cut off wellhead. Welded plate and dry hole marker. Backfilled around well, Well PA'ed

VGSAU #35 - Final P&A WBD

Created: 02/06/25 By: JFR
 Updated: _____ By: _____
 Lease: Vacuum Grayburg San Andres Unit
 Field: Vacuum Grayburg San Andres Unit
 Surf. Loc.: 2,630' FNL & 1,330' FEL
 Bot. Loc.: _____
 County: Lea St.: NM
 Status: Plugged

Well #: 35 St. Lse: B-1733-1
 API: 30-025-24361
 Unit Ltr.: G Section: 1
 TSHP/Rng: 18S / 34E
 Unit Ltr.: _____ Section: _____
 TSHP/Rng: _____
 Directions: Buckeye, NM

Surface Casing

Size: 8-5/8"
 Wt., Grd.: 20#
 Depth: 357
 Sxs Cmt: 300
 Circulate: Yes
 TOC: Surface
 Hole Size: 12 1/4

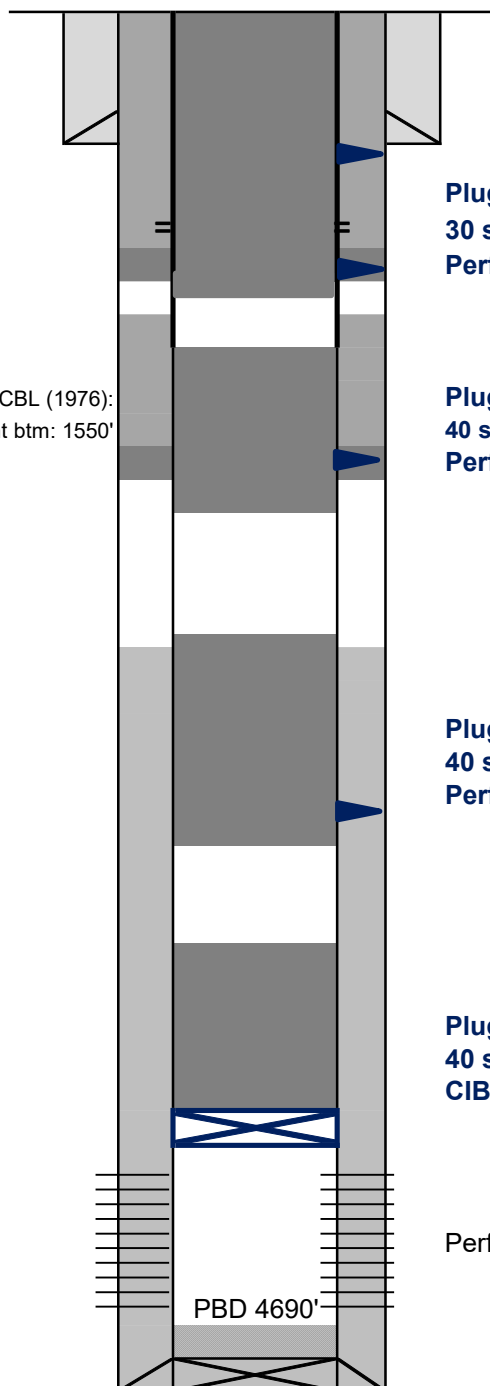
Production Casing

Size: 4-1/2"
 Wt., Grd.: 9.5# & 10.5#
 Depth: 4,800
 Sxs Cmt: 650
 Circulate: No
 TOC: 2380'
 Hole Size: 7 7/8

Formation Top
 Salt 1600'
 Yates 2762'

Perforations - 211' (History - SPF)

4112-26, 31-37, 48-54, 60-66,
 68-78, 4192-4200, 02-06, 10-14,
 22-26, 28-37, 4254-4338, 4360,
 74, 92, 4405, 11, 25, 37, 48, 56,
 68, 83, 4507, 16, 29, 59, 69, 72,
 98, 4616, 24, 52, 56, 81, 91, 4707,
 27, 37



Plug #5
 45 sx cmt plug from 0'-605'
 Perf @ 407'

Plug #4
 30 sx cmt plug from 605'-950'
 Perf @ 900'

Plug #3
 40 sx cmt plug from 1150'-1700'
 Perf @ 1650'

Plug #2
 40 sx cmt plug from 2234'-2862'
 Perf @ 2812'

Plug #1A & 1B (Perfs & Queen)
 40 sx cmt from 3501'-4062'
 CIBP @ 4062'

Perfs: 4112'-4737' (overall)

PBTD: 4,690
 TD: 4,800

Sante Fe Main Office
Phone: (505) 476-3441

General Information
Phone: (505) 629-6116

Online Phone Directory
<https://www.emnrd.nm.gov/ocd/contact-us>

State of New Mexico
Energy, Minerals and Natural Resources
Oil Conservation Division
1220 S. St Francis Dr.
Santa Fe, NM 87505

CONDITIONS

Action 445570

CONDITIONS

| | |
|--|--|
| Operator: MorningStar Operating LLC 400 W 7th St Fort Worth, TX 76102 | OGRID: 330132 |
| | Action Number: 445570 |
| | Action Type: [C-103] Sub. Plugging (C-103P) |

CONDITIONS

| Created By | Condition | Condition Date |
|------------|---|----------------|
| gcordero | Submit C-103Q within one year of plugging. | 3/28/2025 |
| gcordero | Clean Location in accordance with 19.15.25.10 NMAC. | 3/28/2025 |