

Office
 District I – (575) 393-6161
 1625 N. French Dr., Hobbs, NM 88240
 District II – (575) 748-1283
 811 S. First St., Artesia, NM 88210
 District III – (505) 334-6178
 1000 Rio Brazos Rd., Aztec, NM 87410
 District IV – (505) 476-3460
 1220 S. St. Francis Dr., Santa Fe, NM
 87505

State of New Mexico
 Energy, Minerals and Natural Resources

Form C-103
 Revised July 18, 2013

OIL CONSERVATION DIVISION
 1220 South St. Francis Dr.
 Santa Fe, NM 87505

WELL API NO. 30-025-12356
5. Indicate Type of Lease STATE <input checked="" type="checkbox"/> FEE <input type="checkbox"/>
6. State Oil & Gas Lease No.
7. Lease Name or Unit Agreement Name WEST DOLLARHIDE DEVONIAN UNIT
8. Well Number #112
9. OGRID Number 16696
10. Pool name or Wildcat [18050] DOLLARHIDE;DEVONIAN

SUNDRY NOTICES AND REPORTS ON WELLS (DO NOT USE THIS FORM FOR PROPOSALS TO DRILL OR TO DEEPEN OR PLUG BACK TO A DIFFERENT RESERVOIR. USE "APPLICATION FOR PERMIT" (FORM C-101) FOR SUCH PROPOSALS.)	
1. Type of Well: Oil Well <input type="checkbox"/> Gas Well <input type="checkbox"/> Other <input checked="" type="checkbox"/> INJECTION	
2. Name of Operator OXY USA INC.	
3. Address of Operator P.O. BOX 4294 HOUSTON, TX 77210	
4. Well Location Unit Letter <u>D</u> : <u>660</u> feet from the <u>NORTH</u> line and <u>330'</u> feet from the <u>WEST</u> line Section <u>4</u> Township <u>25S</u> Range <u>38E</u> NMPM County <u>LEA</u>	
11. Elevation (Show whether DR, RKB, RT, GR, etc.)	

12. Check Appropriate Box to Indicate Nature of Notice, Report or Other Data

NOTICE OF INTENTION TO: PERFORM REMEDIAL WORK <input type="checkbox"/> PLUG AND ABANDON <input type="checkbox"/> TEMPORARILY ABANDON <input type="checkbox"/> CHANGE PLANS <input type="checkbox"/> PULL OR ALTER CASING <input type="checkbox"/> MULTIPLE COMPL <input type="checkbox"/> DOWNHOLE COMMINGLE <input type="checkbox"/> CLOSED-LOOP SYSTEM <input type="checkbox"/> OTHER: <input type="checkbox"/>		SUBSEQUENT REPORT OF: REMEDIAL WORK <input checked="" type="checkbox"/> ALTERING CASING <input type="checkbox"/> COMMENCE DRILLING OPNS. <input type="checkbox"/> P AND A <input type="checkbox"/> CASING/CEMENT JOB <input type="checkbox"/> OTHER: <input type="checkbox"/>	
-------------------------------------------------------------------------------------------------------------------------------------------------------------------------------------------------------------------------------------------------------------------------------------------------------------------------------------------------------------------------------------------------------------------------------------	--	-------------------------------------------------------------------------------------------------------------------------------------------------------------------------------------------------------------------------------------------------------------------------------------------	--

13. Describe proposed or completed operations. (Clearly state all pertinent details, and give pertinent dates, including estimated date of starting any proposed work). SEE RULE 19.15.7.14 NMAC. For Multiple Completions: Attach wellbore diagram of proposed completion or recompletion.

THE WORKOVER WAS COMPLETED ON THE SUBJECT INJECTION WELL. PLEASE SEE THE ATTACHED FINAL WELLBORE, WORKOVER JOB NOTES, AND THE MIT.

NOTE- THE MIT WAS RAN ON 3/27/2025 WITH MCCLASKEY.

PER CONDITIONS IN NOI, THERE WAS NOT CHANGE IN TUBING SIZE AND THE PACKER IS NOT SET MORE THAN 100 FT ABOVE THE TOP OF THE INJECTION INTERVAL.

Spud Date:

Rig Release Date:

I hereby certify that the information above is true and complete to the best of my knowledge and belief.

SIGNATURE Stephen Janacek TITLE REGULATORY ENGINEER DATE 4/2/2025

Type or print name STEPHEN JANACEK E-mail address: STEPHEN_JANACEK@OXY.COM PHONE: 713-493-1986

For State Use Only

APPROVED BY: _____ TITLE _____ DATE _____

Conditions of Approval (if any):

Final Wellbore Diagram



API#:	30-025-12356-0000
Lease Name:	WEST DOLLARHIDE DEVONIAN UNIT
Well Number:	112
County & State:	Lea, New Mexico
RKB Elevation:	3,170'
Ground Elevation:	3,155'

Surface Casing

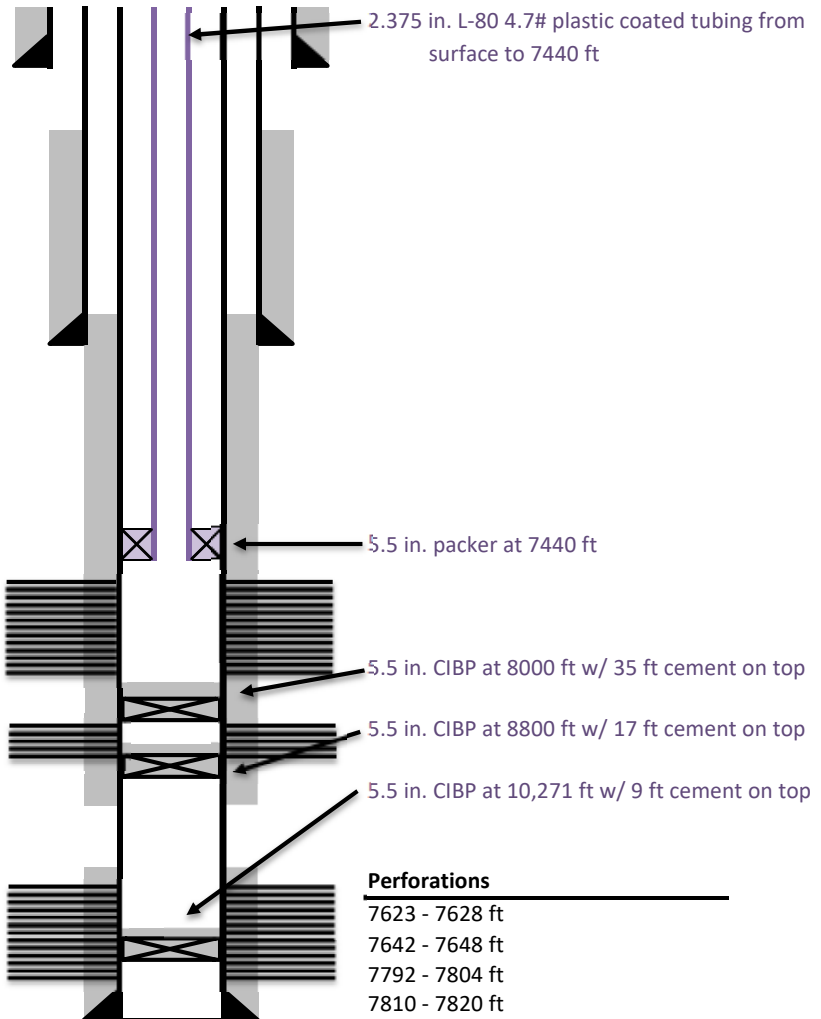
13.375 in. J-55 54.5# surface to 316 ft
 17.5 in. hole
 TOC circ to surface (350 sx)

Intermediate Casing

9.625 in. J-55 36# surface to 2909 ft
 12.25 in. hole
 TOC at 1825 ft (1700 sx)

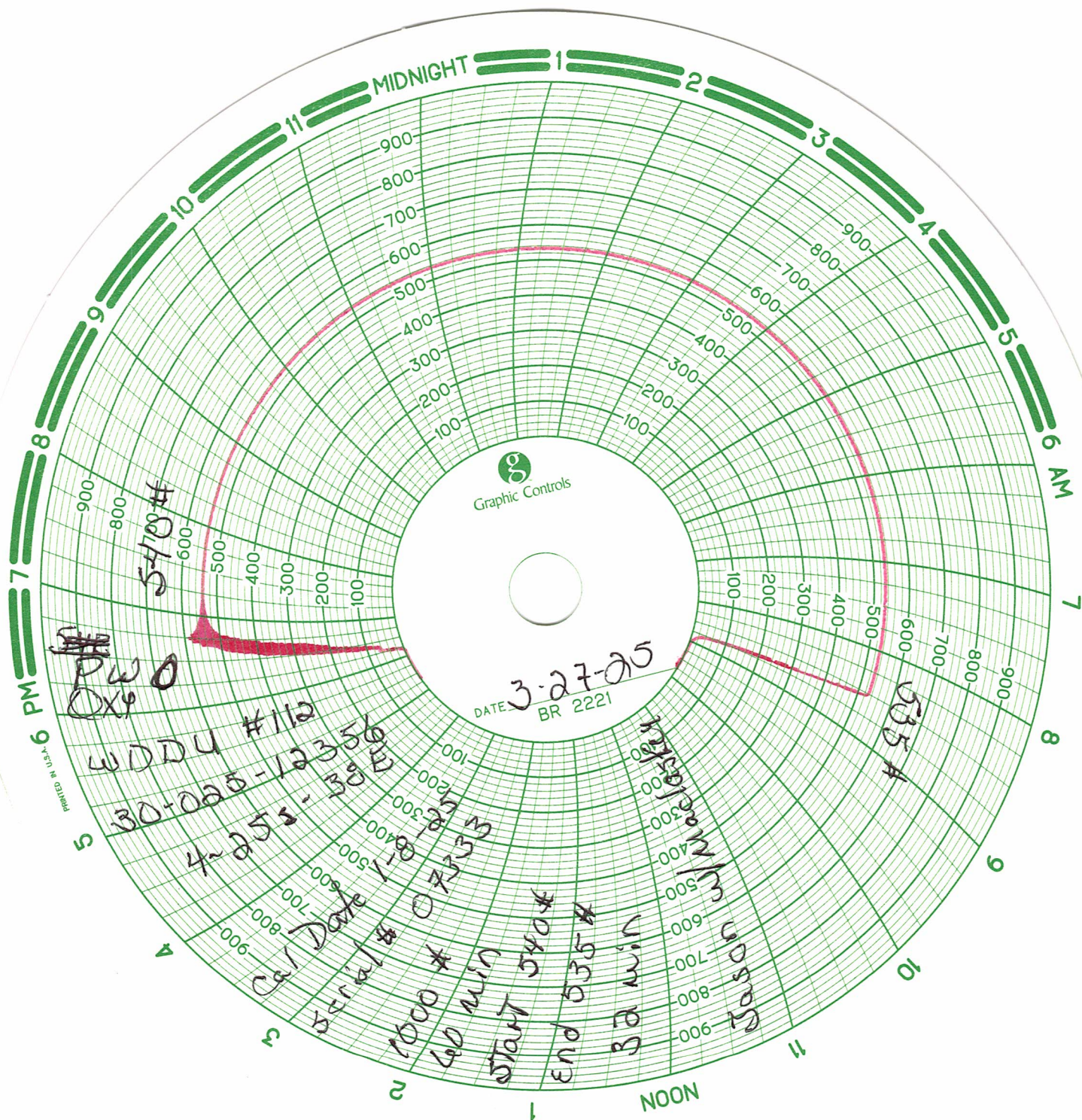
Production Casing

5.5 in. N-80 20# surface to 2215 ft
 5.5 in. J-55 15.5# 2215 to 5184 ft
 5.5 in. N-80 17# 5184 to 5756 ft
 5.5 in. N-80 20# 5756 to 10299 ft
 8.75 in. hole
 Cement behind casing from
 2895 to 9525 ft (1600 sx)
 Cement behind casing from
 9775 to 10,299 ft (150 sx)

**Perforations**

7623 - 7628 ft
 7642 - 7648 ft
 7792 - 7804 ft
 7810 - 7820 ft
 8626 - 8775 ft (Abandoned)
 9525 - 9526 ft (Abandoned)
 10,145 - 10,195 ft (Abandoned)
 10,210 - 10,255 ft (Abandoned)
 10,270 - 10,285 ft (Abandoned)

PBTD at 7965 ft MD
 TD at 10,300 ft MD
 TD at 10,300 ft TVD



WDDU-112**30-025-12356****WORKOVER JOB NOTES**

Start Date	Remarks
2/17/2025	JSA safety meeting TGM topic- move rig to new location.
2/17/2025	Move rig from the Quick Dollar 1H to the Weste dollar Devonian unit 112 for wellbore clean out.
2/17/2025	Spot rig mat Rig up service unit,
2/17/2025	Rig up Renegade slick line, check pressure SITP 0 psi SICP 0 psi, RIH with Gauge ring Found PKR @ 7,454' Rig down Slick line. RU rev unit down tbg Attempted to Pump down tbg could not pump down tbg pressure up to 1,000 PSI, Pressure up csg to 500 psi held good.
2/17/2025	Crew drove from location to Viva yard,
2/18/2025	The crew drove from the yard to the location.
2/18/2025	The crew arrived on location held a JSA meeting and filled out paperwork.
2/18/2025	The shut in casing pressure was 0 psi.
2/18/2025	The shut in tubing pressure was 650 psi.
2/18/2025	Rig up wireline.
2/18/2025	RIH gun and perforate tubing at 7,477'. POOH gun.
2/18/2025	Rig down wireline.
2/18/2025	Circulate well with 170 barrels of 10# brine water.
2/18/2025	Function test BOP.
2/18/2025	Nipple down wellhead.
2/18/2025	Nipple up BOP.
2/18/2025	Rig up work floor and tubing equipment.
2/18/2025	Pick up 1- 2-3/8" L-80 bare tubing joint, and release injection packer. The neutral weight was 34 points. POOH lay down 1-2-3/8" L-80 bare tubing joint.
2/18/2025	The crew took lunch.
2/18/2025	Rig down work floor and tubing equipment.
2/18/2025	Rigged down pulling unit due to oil leak.
2/18/2025	The crew drove to the yard.
2/21/2025	Moved WSU and equipment to location.
2/21/2025	Held JSA safety meeting w/ 360 HH. Applied LOTO
2/21/2025	Spot in and rig up WSU.
2/21/2025	Rig workfloor.
2/21/2025	Moved viva equipment out of the way and spotted in and rigged up Rev unit.
2/21/2025	Check pressure- SITP: 150# SICP: 50 BDW
2/21/2025	Pumped 40 bbls of treated BW. Well went on Vac.
2/21/2025	POOH and LD 40 jnts of 2 3/8"
2/21/2025	Secured well SION.
2/21/2025	Crew travel time to yard from location.
2/22/2025	Crew travel time to location from yard.
2/22/2025	Held JSA safety meeting w/ 360 HH
2/22/2025	Check Pressure- SITP 50# SICP: 50# BDW

2/22/2025	Pumped 50 BBLS of BW down casing well went on Vac
2/22/2025	POOH LD 207 jnts of 2 3/8" tbg. LD lokset packer. Packer elements worn.
2/22/2025	Lunch break for crew
2/22/2025	Move old tubing to side of location. Moved in 2 7/8" workstring.
2/22/2025	Tally tbg & Switched equipment over from 2 3/8 to 2 7/8"
2/22/2025	PU 4 5/8" bit and bit sub. RIH w/ 140 jnts of 2 7/8" workstring EOT @ 4480'.
2/22/2025	Secured well SION.
2/22/2025	Crew travel time to yard from location.
2/23/2025	Crew travel time to location from yard.
2/23/2025	Held JSA safety meeting w/ 360 HH
2/23/2025	Check Pressure- SITP 50# SICP: 50# BDW
2/23/2025	Pumped 50 BBLS of BW down casing well went on Vac
2/23/2025	Cont PU 234 jnts of 2 7/8" workstring tubing. Tag @ 7445' LD jnt
2/23/2025	RD tongs PU power swivel
2/23/2025	Circulate well, broke circulation w/ 3 bbls.
2/23/2025	Clean out to 7686'. Hydraulic pump to power swivel started leaking, attempted to repair. Cold call for hose. Cont to circulate well.
2/23/2025	Wait on mechanic to repair, Sendero found bad pump. will need to change out.
2/23/2025	RD power swivel.
2/23/2025	POOH w/ 5 stands of 2 7/8 workstring EOT @ 7364'
2/23/2025	Secured well SION.
2/23/2025	Crew travel time to yard from location.
2/24/2025	CREW TRAVEL TIME TO LOCATION FROM YARD.
2/24/2025	HELD JSA SAFETY MEETING W/ 360 HH. RIG INSPECTION, SET AND TEST COFO SYSTEM.
2/24/2025	CHECK WELL PRESSURE- SICP-0 SITP-0 SLIGHT VAC.
2/24/2025	R.I.H. WITH 8 STANDS OF 2 7/8 WORKSTRING
2/24/2025	R.U. POWER SWIVEL. CONTINUED TO HAVE ISSUES WITH SWIVEL.
2/24/2025	CALLED FOR MECHANIC. STANDBY FOR SENDERO MECHANIC. MECHANIC FOUND TRASH IN FUEL LINES AND FILTERS
2/24/2025	BREAK CIRC. WITH 1 BBL. @ 7686' WITH 238 JNTS. CONT CLEANING OUT FOUND SAND (FILL) IN RETURNS.
2/24/2025	CIRC CLEAN @ 7714' WITH 242 JNTS. WHILE CREW TOOK LUNCH BREAK.
2/24/2025	CONT CLEANING OUT TO 7825' WITH 246 JNTS. TAG HARD. DISCUSSED W/ PE DECIDED TO PROCEED WITH ACID JOB.
2/24/2025	CIRC CLEAN BOTTOMS UP W/ 140 BBLS. ATTEMPTED TO PUMP INTO PERFS. 1/4BPM @ 500#
2/24/2025	R.D. POWER SWIVEL.
2/24/2025	N.D. STRIPPER HEAD
2/24/2025	LAYDOWN 11 JNTS. THEN P.O.O.H. WITH 234 JNTS OF 2 7/8 WORKSTRING LD BIT SUB AND BIT.
2/24/2025	SECURED WELL SION.
2/24/2025	CREW TRAVEL TIME TO BASE FROM LOCATION.
2/25/2025	CREW TRAVEL TIME TO LOCATION FROM YARD.
2/25/2025	HELD JSA SAFETY MEETING W/ 360 HH, RIG INSPECTION. SET AND TEST COFO
2/25/2025	CHECK WELL PRESSURE SICP: 0# SITP: 0# SLIGHT VAC

2/25/2025	R.I.H. WITH 5.5 20# PKR HD. AND 234 JNTS SET PKR @ 7457'
2/25/2025	SET PACKER @ 7457' LOAD TEST PACKER W/ 2 BBLS TO 550# GOOD.
2/25/2025	SAFETY MEETING ON PUMPING ACID
2/25/2025	ESTABLISHED PUMP RATE .6 BPM @ 1600 PSI. INCREASING AND SETTLING @ .8, 1900# STARTED ON 3 BBLS OF ACID. FOUND TBG AND CSG COMMUNICATING. ACID TRUCK PUMPED TO CLEAR LINES. RELEASED AND SET PKR 3 FT HIGHER. STARTED PUMPING BRINE AGAIN AND STILL COMMUNICATING.
2/25/2025	DUMPED CHEMICAL TO NEUTRALIZE ACID. R.U. HOSE TO TBG. CIRC. ACID OUT OF TBG. WITH 30 BBLS.
2/25/2025	R.D. HOSE FROM TBG. RELEASED PKR.
2/25/2025	P.O.O.H. WITH 243 JNTS AND PKR. ELEMENT ON PKR HAD A FEW TEARS ON IT.
2/25/2025	LUNCH
2/25/2025	R.U. TBG TESTER.
2/25/2025	PU AND RIH W/ 5.5 PKR HD AND 2 7/8 L-80 TBG. WHILE HYDRO TEST.
2/25/2025	SET PKR @ 7426' WITH 233 JNTS.
2/25/2025	LOAD AND TEST CSG AT 600 PSI. TEST WAS GOOD. RD TESTER.
2/25/2025	BLEED OFF PRESSURE SECURED WELL SION
2/25/2025	CREW TRAVEL TIME TO YARD FROM BASE.
2/26/2025	CREW TRAVEL TIME TO LOCATION.
2/26/2025	HELD JSA SAFETY MEETING W/ 360 HH. RIG INSPECTION. SET AND TEST COFO SYSTEM.
2/26/2025	CHECK WELL PRESSURE SICP: 0 PSI, SITP: 0 SLIGHT VAC
2/26/2025	N.U. STRIPPER HEAD
2/26/2025	HAD JSA MEETING ABOUT PUMPING ACID
2/26/2025	OPEN BYPASS ON PKR. PUMP 1 BBLS BROKE CIRC. PUMP 3 BBLS TO MAKE SURE WE WERE CLEAR.
2/26/2025	PUMP 37 BBLS OF ACID
2/26/2025	CLOSED BYPASS ON PKR. PRESSURE UP CSG @ 600 PSI.
2/26/2025	STARTED TO PUMP ACID .6 BPM @ 2400 INJECTION RATE. PUMPED TOTAL OF 95 BBLS OF ACID. ACID ON FORMATION, PERFS BROKE DOWN AND ABLE TO PUMP 2 BPM @ 1600# SWITCH TO BRINE. PUMPED 55 BBLS. SHUT PRESSURE ON TBG WAS 689 PSI.
2/26/2025	RD ACID TRUCKS. PRESSURE SLOWLY WENT DOWN TO 0 PSI. OPEN BYPASS RELEASED PKR. TBG AND CSG WENT ON VACUUM.
2/26/2025	N.D. STRIPPER HEAD.
2/26/2025	P.O.O.H. WITH 233 JNTS AND LD PACKER
2/26/2025	WATER BREAK FOR CREW.
2/26/2025	R.I.H. WITH (PRODUCTION PKR.) 5.5 AS1-X PKR, NICKEL AND PLASTIC COATED 1.50 PROFILE STINGER. AND 233 JNTS. ATTEMPTED TO SET 100' ABOVE PERFS HAD ISSUES PACKER NOT SETTING. DISCUSSED W/ PE DECIDED TO SET @ 7455'
2/26/2025	SET PKR AT 7455'. UNLATCHED FROM PACKER.
2/26/2025	SECURED WELL SION.
2/26/2025	CREW TRAVEL TIME TO BASE FROM LOCATION.
2/27/2025	CREW TRAVEL TIME TO LOCATION.
2/27/2025	HELD JSA SAFETY MEETING W/ 360 HH. RIG INSPECTION, SET TEST COFO. GOOD.
2/27/2025	CHECK WELL PRESSURE ON SICP: 0 PSI, SITP 50 PSI. WELL HAD SLIGHT VACUUM.

2/27/2025	PRESSURE TEST CSG AT 550 PSI. RAN DUMMY CHART. GOOD TEST @ 540#
2/27/2025	CIRCULATE WELL FW W/ PKR FLUID 180 BBLs.
2/27/2025	LAYDOWN 176 JNTS OF 2 7/8" WORKSTRING.
2/27/2025	LUNCH BREAK
2/27/2025	CONTINUE TO LAYDOWN TBG. LD A TOTAL OF 233 JNTS OF 2 7/8" WORKSTRING AND ON/OFF TOOL.
2/27/2025	REMOVE WORK STRING FROM PIPE RACKS. MOVE IN PRODUCTION TBG ONTO PIPE RACKS. TALLY AND REMOVE COOLAR PROTECTORS. CHANGE ELEVATORS AND SLIPS TO 2 3/8, AND TBG RAMS TO 2 3/8.
2/27/2025	PU ON/OFF TOOL AND RIH W/50 JTS OF 2 3/8 TK-15 L-80 TBG.
2/27/2025	TALLY TBG.
2/27/2025	CONTINUE TO PICK UP AN ADDITIONAL 22 JNTS 2 3/8" TK-15. HAD SOME ISSUES WITH PLASTIC ON THE PIN END STARTING CONNECTIONS. DRIFT GOES THROUGH TBG NO ISSUES. UNSCREWED CONNECTION CHECK PLASTIC ENSURE NO DAMAGE. PLASTIC LOOKED IN GOOD CONDITION.
2/27/2025	SECURED WELL SION.
2/27/2025	CREW TRAVEL TIME TO BASE.
2/28/2025	CREW TRAVEL TIME TO LOCATION.
2/28/2025	HELD JSA SAFETY MEETING W/ 360 HH. RIG INSPECTION, SET TEST COFO. GOOD.
2/28/2025	CHECK WELL PRESSURE SITP:0# SICP: 0#
2/28/2025	R.I.H. WITH 2 3/8 TBG TK15 TBG
2/28/2025	TALLY REST OF TBG. TOTAL JNTS 235.
2/28/2025	CONTINUE R.I.H. WITH TBG. PICKED UP 228 TOTAL JNTS.
2/28/2025	SPACE OUT PKR. PICKED UP (TOP TO BOTTOM) 1- 2 3/8 JNT, 1- 10' SUB. , 1- 4' SUB. AND 227 JNTS OF 2 3/8 TBG.
2/28/2025	LOAD AND TEST CSG 550 PSI. WHILE CREW ATE LUNCH. CSG PRESSURE HELD GOOD.
2/28/2025	R.D. RIG FLOOR. N.D. BOP
2/28/2025	NU PRODUCTION WELLHEAD. LANDED TBG. WITH 20 POINTS COMPRESSION.
2/28/2025	PRESSURED UP TO 2000 PSI TO PUMP OFF PUMP OFF PLUG. STARTED PUMPING THROUGH PUMP OFF PLUG. WELL STARTED TO CIRCULATE @ 1200 PSI. PUMP DOWN BACK SIDE TBG COMMUNICATED
2/28/2025	PUMPED DOWN TBG, COMMUNICATED UP BACKSIDE. STOPPED PUMPING DOWN TBG AND BACKSIDE PRESSURE CAME UP.
2/28/2025	N.D. PRODUCTION WELLHEAD
2/28/2025	N.U. BOP
2/28/2025	RU RIG WORKFLOOR
2/28/2025	PACKED OFF PACKER TEST ON COMPRESSION AND ON TENSION. PRESSURE UP CSG. WELL CONT TO CIRC. COLD CALL FOR SL TO RIH W/ BP COULD NOT SCHEDULE UNTIL IN THE MORNING.
2/28/2025	SECURED WELL SION.
2/28/2025	CREW TRAVEL TIME TO BASE.
3/1/2025	CREW TRAVEL TIME TO LOCATION.
3/1/2025	HELD JSA SAFETY MEETING, W/ 360 HH SET AND TEST COFO
3/1/2025	CHECK WELL PRESSURE SICP- 0# SITP:0 #

3/1/2025	R.U. SLICK LINE. RUN IN HOLE WITH GAUGE RING 1.54". NO ISSUES, POOH AND RUN 1.50" BLANKING PLUG.
3/1/2025	PRESSURE TEST TBG 600#, PASSED.
3/1/2025	R.I.H. W/ FISH. COULD NOT PULL POOH AND PU DIFFERENT FISH W/ MORE SHEARS AND DID NOT FISH POOH AND REDRESS AND RIH- FISHED OUT BP
3/1/2025	R.D. SLICK LINE
3/1/2025	RELEASE PACKER
3/1/2025	LAYDOWN 14' OF SUBS.
3/1/2025	SET PKR AT 7440'
3/1/2025	TEST CSG. AT 500 PSI. PASSED AND ESTABLISHED INJECTION RATE 3/4 BPM @ 1400 PSI W/ NO COMMUNICATION.
3/1/2025	RE-TEST CSG WITH CHART RECORDER. PASSED. 560 PSI FOR 30 MIN. GOOD TEST
3/1/2025	R.D. RIG FLOOR. N.D. BOP.
3/1/2025	N.U. WELLHEAD.
3/1/2025	SECURED WELL SION
3/1/2025	CREW TRAVEL TIME TO BASE.
3/3/2025	CREW TRAVEL TIME TO LOCATION.
3/3/2025	HELD JSA SAFETY MEETING, W/ 360 HH SET AND TEST COFO
3/3/2025	CHECK WELL PRESSURE SICP- 0# SITP:0 #
3/3/2025	PULLED 1 HR, 30 MIN AND 45 MIN CHART DISCUSSED W/ WST TEAM. GAVE PERMISSION TO RIG DOWN. R.D.
3/3/2025	RD PU AND REV UNIT
3/27/2025	RAN MIT CHART WITH MCCLASKEY

Sante Fe Main Office
Phone: (505) 476-3441

General Information
Phone: (505) 629-6116

Online Phone Directory
<https://www.emnrd.nm.gov/oed/contact-us>

State of New Mexico
Energy, Minerals and Natural Resources
Oil Conservation Division
1220 S. St Francis Dr.
Santa Fe, NM 87505

CONDITIONS

Action 447980

CONDITIONS

Operator: OXY USA INC P.O. Box 4294 Houston, TX 772104294	OGRID: 16696
	Action Number: 447980
	Action Type: [C-103] Sub. Workover (C-103R)

CONDITIONS

Created By	Condition	Condition Date
mgebremichael	None	4/2/2025