

Submit a Copy To Appropriate District
Office
District I – (575) 393-6161
1625 N. French Dr., Hobbs, NM 88240
District II – (575) 748-1283
811 S. First St., Artesia, NM 88210
District III – (505) 334-6178
1000 Rio Brazos Rd., Aztec, NM 87410
District IV – (505) 476-3460
1220 S. St. Francis Dr., Santa Fe, NM
87505

State of New Mexico
Energy, Minerals and Natural Resources

Form C-103
Revised July 18, 2013

OIL CONSERVATION DIVISION
1220 South St. Francis Dr.
Santa Fe, NM 87505

| |
|---|
| WELL API NO. 30-025-11209 |
| 5. Indicate Type of Lease STATE <input type="checkbox"/> FEE <input checked="" type="checkbox"/> |
| 6. State Oil & Gas Lease No. |
| 7. Lease Name or Unit Agreement Name Lillie |
| 8. Well Number 2 |
| 9. OGRID Number 256073 |
| 10. Pool name or Wildcat Fowler; Upper Yeso |

| | |
|--|--|
| SUNDRY NOTICES AND REPORTS ON WELLS (DO NOT USE THIS FORM FOR PROPOSALS TO DRILL OR TO DEEPEN OR PLUG BACK TO A DIFFERENT RESERVOIR. USE "APPLICATION FOR PERMIT" (FORM C-101) FOR SUCH PROPOSALS.) | |
| 1. Type of Well: Oil Well <input type="checkbox"/> Gas Well <input type="checkbox"/> Other <input type="checkbox"/> | |
| 2. Name of Operator J R Oil Ltd. Co. | |
| 3. Address of Operator PO Box 2975 Hobbs, NM 88241 | |
| 4. Well Location Unit Letter D , 697 feet from the North line and 568 feet from the West line Section 23 Township 24S Range 37E NMPM County Lea | |
| 11. Elevation (Show whether DR, RKB, RT, GR, etc.) | |

12. Check Appropriate Box to Indicate Nature of Notice, Report or Other Data

| NOTICE OF INTENTION TO: | | SUBSEQUENT REPORT OF: | |
|--|---|--|---|
| PERFORM REMEDIAL WORK <input type="checkbox"/> | PLUG AND ABANDON <input type="checkbox"/> | REMEDIAL WORK <input type="checkbox"/> | ALTERING CASING <input type="checkbox"/> |
| TEMPORARILY ABANDON <input type="checkbox"/> | CHANGE PLANS <input type="checkbox"/> | COMMENCE DRILLING OPNS. <input type="checkbox"/> | P AND A <input checked="" type="checkbox"/> |
| PULL OR ALTER CASING <input type="checkbox"/> | MULTIPLE COMPL <input type="checkbox"/> | CASING/CEMENT JOB <input type="checkbox"/> | |
| DOWNHOLE COMMINGLE <input type="checkbox"/> | | | |
| CLOSED-LOOP SYSTEM <input type="checkbox"/> | | | |
| OTHER: <input type="checkbox"/> | | OTHER: <input type="checkbox"/> | |

13. Describe proposed or completed operations. (Clearly state all pertinent details, and give pertinent dates, including estimated date of starting any proposed work). SEE RULE 19.15.7.14 NMAC. For Multiple Completions: Attach wellbore diagram of proposed completion or recompletion.

Spud Date:

Rig Release Date:

I hereby certify that the information above is true and complete to the best of my knowledge and belief.

SIGNATURE Maren Latimer TITLE Agent DATE 04/16/2025

Type or print name Maren Latimer E-mail address: mlatimer@ravenop.com PHONE: 575-691-6790

For State Use Only

APPROVED BY: _____ TITLE _____ DATE _____

Conditions of Approval (if any):

**Plugging Report
JR Oil Ltd. Co.
Lillie #2
API 30-025-11209**

3/11/2025 Moved rig to location.

3/12/2025 Moved in remaining equipment to location. Set pipe racks and unloaded workstring. Did not rig up due to high winds.

3/17/2025 Rigged up and installed BOP. Picked up workstring and tagged cement on top of cement retainer at 6052'. Circulated 200 bbls MLF and shut down.

3/18/2025 Finished circulating MLF. Pressure tested casing to 500#. Good. Spot 25 sx cement on top of cement retainer at 6052'. POOH with tubing and ran cement bond log. Reported to the NMOCD. Shut down for high winds.

3/19/2025 RIH with tubing and tagged cement at 5887'. POOH to 5646' and spot 100 sx cement with CaCl. WOC and tagged cement at 5057'. POOH to 4884' and spot 25 sx cement. POOH to 3782' and spot 55 sx cement. POOH to 3243' and spot 25 sx cement. Stood back 42 stands and SION.

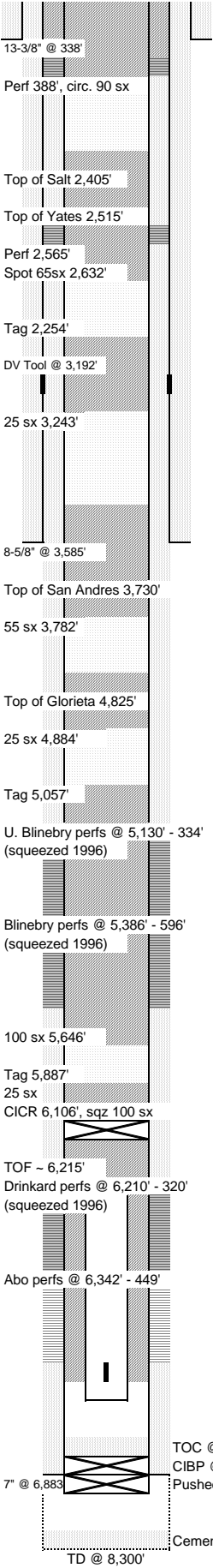
3/20/2025 Perforated casing at 2565'. Set packer and pressured up to 500# and held. Repeated to 700# with same results. POOH with packer and RIH with tubing to 2632' and spot 65 sx cement with CaCl. WOC and tagged at 2254'. Perforated at 388'. Pressured up on perforations. Was able to break down perforations and get communication with the intermediate head but could only pump .25 bbl/min at 1000# with pressure still increasing. Will reperforated in the morning. SION.

3/21/2025 Re-perforated at 388'. Good communication with the intermediate head. Circulated cement with 90 sx. Rigged down and dug out around the wellhead. Could not remove the wellhead due to rebar re-enforced cellar. Shut down.

3/24/2025 Roustabout crew used jack hammer to break up concrete cellar. Removed the wellhead. Filled up 7" casing with 1 sack of cement. Installed standard marker and Sono tube. Filled up tube with 5 sx cement. Cleaned the pit and removed the anchors. Moved out equipment.

JR Oil Ltd.

Lillie #2



| | | | | | | | | | | | | | | |
|--|---------|---------|--------|-------------|----------------|------------|--------------|--------|-------------|--------------------|-----------|--------------|--|--|
| WELL NAME: Lillie #2 | | | | | FORMATION: Abo | | | | | KB: 11.0 | | | | |
| API NO: 30-025-11209 | | | | | FIELD: Fowler | | | | | PBTD: 6,870 | | | | |
| SPUD DATE: April 8, 1953 | | | | | COUNTY: Lea | | | | | TD: 8,300 | | | | |
| CASING | | | | | | | | | | CEMENT & HOLE DATA | | | | |
| | joints | OD | lb/ft | grade | ID (in) | drift (in) | top | bottom | bit size | depth | sacks | TOC | | |
| Surface | 10 | 13 3/8 | 48.00 | H-40 | 12.715 | 12.559 | 11' | 338' | 18, 17-1/4 | | 385 | circ. | | |
| Intermediate (DV Tool) | 82 | 8 5/8 | 28, 32 | J-55 | 8.017 | 7.796 | 11' | 3,192' | 11 | | 2,250 | circ. | | |
| Production | 167 | 7 | 23, 26 | N-80 | 6.366 | 6.151 | 3192' | 3,585' | 7 7/8 | | 125 | | | |
| | | | | | | | 11' | 6,883' | | | 350 | 167' (calc.) | | |
| History: 4/8/1953 Spud by Gulf Oil Corp., DST @ 6,200' - 300', 81,75' - 301', 8,302' - 91' 6/23/1953 Spot 60 sx cement 8,300' - 100', spot 40 sx cement 6,800' - 632', whipstock & drill deviated hole to 213.51' West & 10.53' North @ 8,289' MD 8/23/1953 Set 7", cement, drill out OH to 8,300', DST 7,980' - 8,020', 8,020' - 61', 8,197' - 263', 8,255' - 300' 9/24/1953 Perf Drinkard, CIBP @ 6,400', 2 sx cement, acidize w/ 4,500 gal 15% NE, TR 2, TP 1,750 - 1,350, swab, plug back w/ CalSel & Hydromite 6,340' - 285' 11/4/1953 IP (when drilled out?) 557 BOPD, 0 BWPD, API 37.5 1/17/1966 CIBP @ 6,180' w/ 2 sx cement, perf Bilinebry, spot 500 gal 15% NE, soak ON, frac 32.25k# 20/40 sand in 33.5k gal gel crude w/ BS, ATR 28.8, MTP 3,100, 10" SIP 1,800, flow 163 BOPD, 384 MCFD, 0 BWPD 1/21/1972 Spot 750 gal 15% NE, perf U. Blinebry, frac new perfs only 2k gal 15% NE acid & 35k gal gel water w/ 0-2 ppa sand, ATR 27.7, ATP 3,200, swab, commingle w/ Blinebry 1/8/1985 Tag fill @ 5,424', wash over scale & fish (?) 5,429' - 680', RIH tbg to 5,750', POP, IP 9 BOPD, 164 MCFD, 8 BWPD 2/22/1996 Sqz Blinebry perfs 371 sx cement, drill, test sqz 250 psi, held 15 min., drill CIGR & cement, fish & mill junk 6,084' - 391', squeeze Drinkard 55 sx, test sqz 250 psi, held 15 min., drill CIBP & push to 6,909', set CIBP @ 6,880', dump 2 sx cement, perf Abo, acidize 200 gal 15% HCL NEFE, swab & flow, IP 69 BOPD, 23 MCFD, 39 BWPD, API 37.5 11/28/2012 Last pull, no details 7/29/2022 Pump stuck in prffn, work, hot water csg & tbg, att. RHBO, 3/4 body break 247 RFS due to SRB & under-deposit corrosion, tbg already parted 182 JFS, twisted, tag fish 5,682', recover 12.5 jts, coming out in pieces, left in hole (7) jts, IPC, SN, PS, BPMA, tag fish 6,200', pump biocide, align pumping unit 12/15/2022 Long stroke & lower 9/24/2024 Mod prffn, start hot water rods & tbg, csg flowing, then well head flowing, SD, tbg vac, csg flow, shut csg, pump 54 bbls kill, held 500#, bleed down, while 250# on 7", 150# on 8-5/8, BD, 13-3/8 OH, finish BD 7", POOH rods & pump, hole in IPC, MA pitted, Test tbg 4k, all held, rplc (3) collars, dump bio & CI, RTP 10/9/2024 LD rods, trip bit & scraper to 5,695', RBP wouldn't hold between 5,086' and 5,026', csg held 1,000# from 5,026' to 25', csg head seal or flange leaks, set CIBP @ 5,025', test plug, held 500#, well TA'd 2/20/2025 MIRU 2/21/2025 RIH taper tap & shoe combo, well flowing 2/24/2025 Drill on plug, loose, circ. gas out, can run down but not up, chase down, free going up, start out 2/25/2025 On vac, recover mandrel & btm cone, rig broke 2/26/2025 RIH shoe, tag 6,190', wash to 6,316' (wash pipe full), POOH 2/27/2025 RIH Shoe & T-Dog, work over fish from 6,270' to 6,290', can't make progress, POOH, nothing recovered, RIH shoe w/ larger wash pipe 2/28/2025 Tag 6,292', made 22' in 3 hrs, 2-3' in 2 hrs, recovered 25'+ tubing, 35' rods 3/3/2025 Trip bit & scraper to 6,106', trip pkr to 6,106', inj. 30 bbls 1.5 BPM 1,800#, inj. 10 bbls 2 BPM 1,900#, acidize 1k gal 20%, after acid passed pkr TR 2, TP 1,300#, flush past btm perf, ISIP 1,082, 5 min. 890 3/4/2025 On vac, SD for wind 3/5/2025 Set CIGR @ 6,106', sqz 100 sx Class C neat to retainer 3/6/2025 RDMO, ready for plugging 3/17/2025 MIRU, tag 6,052', circ. MLF 3/18/2025 Test csg, held 500 psi, spot 25 sx on retainer, CBL 3/19/2025 Tag 5,887', spot 100 sx @ 5,646', WOC, tag 5,057', spot 25 sx @ 4,884', spot 55 sx @ 3,782', spot 25 sx @ 3,243' 3/20/2025 Perf 2,565', held pressure, spot 65 sx @ 2,632', WOC, tag 2,254', perf 388' 3/21/2025 Re-perf 388', circ. 90 sx 3/24/2025 Break up cellar, cut off well head, top off 1 sk, install marker, well P&A'd | | | | | | | PERFORATIONS | | | | | | | |
| | | | | | | | top | bottom | zone | status | tfl shots | date | | |
| | | | | | | | 5,130' | 5,334' | U. Blinebry | squeezed | | 01/21/72 | | |
| | | | | | | | 5,386' | 5,596' | Blinebry | squeezed | | 01/17/66 | | |
| | | | | | | | 6,210' | 6,320' | Drinkard | squeezed | | 09/24/53 | | |
| 6,342' | 6,449' | Abo | active | 26 | 02/01/96 | | | | | | | | | |
| TUBING (none) | | | | | | | | | | | | | | |
| | OD (in) | ID (in) | joints | length (ft) | depth (ft) | | | | | | | | | |
| | | | | | | | | | | | | | | |
| | | | | | | | | | | | | | | |
| | | | | | | | | | | | | | | |
| | | | | | | | | | | | | | | |
| | | | | | | | | | | | | | | |
| | | | | | | | | | | | | | | |
| | | | | | | | | | | | | | | |
| | | | | | | | | | | | | | | |
| | | | | | | | | | | | | | | |
| | | | | | | | | | | | | | | |
| | | | | | | | | | | | | | | |
| | | | | | | | | | | | | | | |
| | | | | | | | | | | | | | | |
| | | | | | | | | | | | | | | |
| | | | | | | | | | | | | | | |
| | | | | | | | | | | | | | | |
| | | | | | | | | | | | | | | |
| | | | | | | | | | | | | | | |
| | | | | | | | | | | | | | | |
| | | | | | | | | | | | | | | |
| | | | | | | | | | | | | | | |
| | | | | | | | | | | | | | | |
| | | | | | | | | | | | | | | |
| | | | | | | | | | | | | | | |
| | | | | | | | | | | | | | | |
| | | | | | | | | | | | | | | |
| | | | | | | | | | | | | | | |
| | | | | | | | | | | | | | | |
| | | | | | | | | | | | | | | |
| | | | | | | | | | | | | | | |
| | | | | | | | | | | | | | | |
| | | | | | | | | | | | | | | |
| | | | | | | | | | | | | | | |
| | | | | | | | | | | | | | | |
| | | | | | | | | | | | | | | |
| | | | | | | | | | | | | | | |
| | | | | | | | | | | | | | | |
| | | | | | | | | | | | | | | |
| | | | | | | | | | | | | | | |
| | | | | | | | | | | | | | | |
| | | | | | | | | | | | | | | |
| | | | | | | | | | | | | | | |
| | | | | | | | | | | | | | | |
| | | | | | | | | | | | | | | |
| | | | | | | | | | | | | | | |
| | | | | | | | | | | | | | | |
| | | | | | | | | | | | | | | |
| | | | | | | | | | | | | | | |
| | | | | | | | | | | | | | | |
| | | | | | | | | | | | | | | |
| | | | | | | | | | | | | | | |
| | | | | | | | | | | | | | | |
| | | | | | | | | | | | | | | |
| | | | | | | | | | | | | | | |
| | | | | | | | | | | | | | | |
| | | | | | | | | | | | | | | |
| | | | | | | | | | | | | | | |
| | | | | | | | | | | | | | | |
| | | | | | | | | | | | | | | |
| | | | | | | | | | | | | | | |
| | | | | | | | | | | | | | | |
| | | | | | | | | | | | | | | |
| | | | | | | | | | | | | | | |
| | | | | | | | | | | | | | | |
| | | | | | | | | | | | | | | |
| | | | | | | | | | | | | | | |
| | | | | | | | | | | | | | | |
| | | | | | | | | | | | | | | |
| | | | | | | | | | | | | | | |
| | | | | | | | | | | | | | | |
| | | | | | | | | | | | | | | |
| | | | | | | | | | | | | | | |
| | | | | | | | | | | | | | | |
| | | | | | | | | | | | | | | |
| | | | | | | | | | | | | | | |
| | | | | | | | | | | | | | | |
| | | | | | | | | | | | | | | |
| | | | | | | | | | | | | | | |
| | | | | | | | | | | | | | | |
| | | | | | | | | | | | | | | |
| | | | | | | | | | | | | | | |
| | | | | | | | | | | | | | | |
| | | | | | | | | | | | | | | |
| | | | | | | | | | | | | | | |
| | | | | | | | | | | | | | | |
| | | | | | | | | | | | | | | |
| | | | | | | | | | | | | | | |
| | | | | | | | | | | | | | | |
| | | | | | | | | | | | | | | |
| | | | | | | | | | | | | | | |
| | | | | | | | | | | | | | | |
| | | | | | | | | | | | | | | |
| | | | | | | | | | | | | | | |
| | | | | | | | | | | | | | | |
| | | | | | | | | | | | | | | |
| | | | | | | | | | | | | | | |
| | | | | | | | | | | | | | | |
| | | | | | | | | | | | | | | |
| | | | | | | | | | | | | | | |
| | | | | | | | | | | | | | | |
| | | | | | | | | | | | | | | |
| | | | | | | | | | | | | | | |
| | | | | | | | | | | | | | | |
| | | | | | | | | | | | | | | |
| | | | | | | | | | | | | | | |
| | | | | | | | | | | | | | | |
| | | | | | | | | | | | | | | |
| | | | | | | | | | | | | | | |
| | | | | | | | | | | | | | | |
| | | | | | | | | | | | | | | |
| | | | | | | | | | | | | | | |
| | | | | | | | | | | | | | | |
| | | | | | | | | | | | | | | |
| | | | | | | | | | | | | | | |
| | | | | | | | | | | | | | | |
| | | | | | | | | | | | | | | |
| | | | | | | | | | | | | | | |
| | | | | | | | | | | | | | | |
| | | | | | | | | | | | | | | |
| | | | | | | | | | | | | | | |
| | | | | | | | | | | | | | | |
| | | | | | | | | | | | | | | |
| | | | | | | | | | | | | | | |
| | | | | | | | | | | | | | | |
| | | | | | | | | | | | | | | |
| | | | | | | | | | | | | | | |
| | | | | | | | | | | | | | | |
| | | | | | | | | | | | | | | |
| | | | | | | | | | | | | | | |
| | | | | | | | | | | | | | | |
| | | | | | | | | | | | | | | |
| | | | | | | | | | | | | | | |
| | | | | | | | | | | | | | | |
| | | | | | | | | | | | | | | |
| | | | | | | | | | | | | | | |
| | | | | | | | | | | | | | | |
| | | | | | | | | | | | | | | |
| | | | | | | | | | | | | | | |
| | | | | | | | | | | | | | | |
| | | | | </ | | | | | | | | | | |

Sante Fe Main Office
Phone: (505) 476-3441

General Information
Phone: (505) 629-6116

Online Phone Directory
<https://www.emnrd.nm.gov/oed/contact-us>

State of New Mexico
Energy, Minerals and Natural Resources
Oil Conservation Division
1220 S. St Francis Dr.
Santa Fe, NM 87505

CONDITIONS

Action 452679

CONDITIONS

| | |
|---|--|
| Operator: J R OIL, LTD. CO. P.O. Box 53657 Lubbock, TX 79453 | OGRID: 256073 |
| | Action Number: 452679 |
| | Action Type: [C-103] Sub. Plugging (C-103P) |

CONDITIONS

| Created By | Condition | Condition Date |
|------------|---|----------------|
| gcordero | Clean Location in accordance with 19.15.25.10 NMAC. | 4/17/2025 |
| gcordero | Submit C-103Q within one year of plugging. | 4/17/2025 |