

Well Name: POKER LAKE UNIT	Well Location: T24S / R30E / SEC 4 / SENE / 32.249836 / -103.880506	County or Parish/State: EDDY / NM
Well Number: 318H	Type of Well: OIL WELL	Allottee or Tribe Name:
Lease Number: NMLC068905	Unit or CA Name: CNSOL DLWR PA BDEFHI	Unit or CA Number: NMNM71016AN
US Well Number: 3001539731	Operator: XTO PERMIAN OPERATING LLC	

Subsequent Report

Sundry ID: 2846049

Type of Submission: Subsequent Report Type of Action: Plug and Abandonment

Date Sundry Submitted: 04/08/2025 Time Sundry Submitted: 01:53

Date Operation Actually Began: 12/17/2024

Actual Procedure: XTO Permian Operating LLC., has P&A'd the above mentioned well per the attached P&A summary report and WBD.

SR Attachments

Actual Procedure

Poker_Lake_Unit_318H_P_A_Summary_Rpt_WBD_20250408135110.pdf

Received by OCD: 4/21/2025 10:32:26 AM

Well Name: POKER LAKE UNIT

Well Location: T24S / R30E / SEC 4 / SENE / 32.249836 / -103.880506

County or Parish/State: EDDY / NM

Well Number: 318H

Type of Well: OIL WELL

Allottee or Tribe Name:

Lease Number: NMLC068905

Unit or CA Name: CNSOL DLWR PA BDEFHI

Unit or CA Number: NMNM71016AN

US Well Number: 3001539731

Operator: XTO PERMIAN OPERATING LLC

Operator

I certify that the foregoing is true and correct. Title 18 U.S.C. Section 1001 and Title 43 U.S.C. Section 1212, make it a crime for any person knowingly and willfully to make to any department or agency of the United States any false, fictitious or fraudulent statements or representations as to any matter within its jurisdiction. Electronic submission of Sundry Notices through this system satisfies regulations requiring a

Operator Electronic Signature: SHERRY MORROW

Signed on: APR 08, 2025 01:52 PM

Name: XTO PERMIAN OPERATING LLC

Title: Regulatory Analyst

Street Address: 6401 HOLIDAY HILL ROAD BLDG 5

City: MIDLANDState: TX

Phone: (432) 218-3671

Email address: SHERRY.MORROW@EXXONMOBIL.COM

Field

Representative Name:

Street Address:

City:State:Zip:

Phone:

Email address:

BLM Point of Contact

BLM POC Name: JAMES A AMOS

BLM POC Title: Acting Assistant Field Manager

BLM POC Phone: 5752345927

BLM POC Email Address: jamos@blm.gov

Disposition: Accepted

Disposition Date: 04/14/2025

Signature: James A Amos

Poker Lake Unit 318H
API Number 30-015-39731
P&A Summary Report

12/17/24: MIRU.

12/18/24: Kill Well, 45 bbls 10# down tbg, 240bbls 10# down csg. Function test and NU 5K BOP's and Annular. Test Bop's 250 low 4,500 psi high Annular- 250 psi low 2,500 psi high RU floor and JW Spooler. POOH W/ 40 stnds and cable. EOT 4,290'. Secure well and SDFN.

12/19/24: POOH W/ 2.875" prod tbg, Esp and cable. @4,625' ESP Cable parted. Were able to retrieve cable and continue OOH. All tbg ooh and ESP tore down. Secure Well and SDFN.

12/20/24: MIRU WLU. RIH W/ 5.90" GR/JB to 7,050'. FL-5,400' POOH. RIH W/ CIBP 5.70" OD Set CIBP @ 7,000' POOH. Fill Csg with 211 bbls 10# Brine. Secure Well and SDFN.

12/21/24: Fluid level 400'. Could not get casing and CIBP to test. Losing 30 psi per min. RIH to 6,995'. Run CBL from 6,995'-surface. MIRU Hydra tester. Secure Well and SDFN.

12/22/24: RIH W/ 32-A PKR testing TBG to 5,056' 156 jnts. RU kelly hose and circulate WB from 5,056' 2 bpm @ 50 psi. Set PKR @ 5,056' (DV Tool @ 5,020'). Could not get a test on tbg or csg losing 100 psi per min. When testing casing, tubing would flow. POOH to 4,991' above dv tool and test. Unsuccessful. POOH to 1,306' and test held 500 psi. RBIH to 2,600'. Secure Well and SDFN.

12/23/24: Continue RIH to isolate csg leak 3,766'. Leak off 75 psi 5 min 3,118'. Leak off 75 psi 5 min 2,795'. No leak off 2,925 psi 40 psi leak off 2,860 30 psi leak off 2,829' No leak off Csg leak between- 2,829'-2,860'. At 2,860' test down tbg from PKR to CIBP @7,000' 70 psi leak off. 5 min test. TIH @ 5,219' sat down a few times tag in the same spot. No gain in PU after PU. POOH to 5,185'. Test from PKR to CIBP @ 7,000'. 200 psi leak off in 5 min. Secure Well and SDFHWE.

1/3/25: Performed inspection and maintenance to equipment.

1/4/25: TIH w/ 200 jnts 2-7/8 EUE L80 open ended Tbg from derrick. PU 16 jnts from the ground. Tagged CIBP w/ 216 jnts @ 7,000' FS. LD 1 jn. EOT @ 6,998' FS. MIRU cmt trucks & vac truck w/ FW. Broke circulation. Spot 40 sks Class C cmt on top of CIBP. CTOC @ 6,754'. TOH w/ 30 jnts, EOT w/ 186 jnts IH @ 6,018' FS. Reverse circulate w/ 50 Bbls of 10# BW. No CMT returns at surface. TOH w/ 30 jnts. Leave 156 jnts IH, EOT @ 5,048' FS. Secured well. SWION.

1/5/25: SISCP O. Load Csg w/ 10 Bbls of 10# BW. FL @~300' fs. PT @ 500psi. TIH w/ 55 jnts 2-7/8 EUE L80 open ended Tbg from derrick. TTOC w/ 211 jnts @ 6,832' FS. LD 3 jnts 2-7/8 Tbg. Landed well. EOT w/ 208 jnts @ 6,735' FS. RD work floors. ND BOP. NU WH. Installed 2' pup jn w/ gate valve. PT WB @ 250psi. RDMO WOR & Equipment. Clean location. Secured well for the P&A ops.

1/27/25: MIRU.

1/28/25: NU 10k to 5 k spool. Remove tbg hanger and hang w/test hanger. NU BOP. PT BOP. Pipe and blind rams PT to 3700 psi on high and 300 psi on low. All test good. Secured well and SDFN.

1/29/25: RU CMT pump. Spot catwalk and pipe racks. TOH LD 51 jnts 2-7/8 L80 tbg. EOT @5070'. Circ 194 bbls SGM @ 1.5 bpm. Bbl in bbl out after 40 bbls pumped to load hole. 0 psi PT CIBP to 500 psi for 30 minutes. No leak off. Spotted 30 sks Class C CMT (4.5 bbls FW Mix, 7 bbls Slurry Vol, FOF 184', CTOC 488') Displaced w/ 28.25 bbls. TOH 40 jnts 2-7/8 L80 tbg. EOT@3784'. Rev circulated 24 bbls 10# BW. Secured well and SDFN.

1/30/25: TIH 36 jnts 2-7/8 L80 tbg and a partial (20') of jnt 37 150 jnts total. TTOC @4877'. TOH LD 7 jnts 2=7/8 L80 tbg. Std back 34 jnts. Total in hole 110 jnts. EOT @3960'. Secured well and SDFN.

1/31/25: Broke circ w/10 bbls 10# BW. Spot 433 sks Class C CMT (FW Mix 65 bbls, Slurry Vol 101.79 bbls, CTOC 1300') Displaced w/7.5 bbls 10# BW. TOH LD 123 jnts 2-7/8 L80 tbg. WOC TIH 39 jnts 2-7/8 L80 tbg and 27' of jnt 40. TTOC @1297'. TOH std back 40 jnts 2-7/8 L80 tbg. Secured well and SDFN.

2/2/25: MIRU WLU. RIH w/strip gun and perf @ 1265'. POOH. Build 3 1/8 gun. RIH and perf @ 403'. POOH. RDMO WLU. TIH 13 jnts and a 8' pup. Set pkr @415'. Attempted to circ down csg and up tbg. Got up to 1000 psi

and got nothing out the tbg. Attempted to pump down tbg and up csg. Got up to 1000 psi and got no returns. Decided to rock it by switch back and forth from pumping down tbg and up csg to pumping down csg and up tbg. Was finally able to circulate down the csg and up the tbg @1.5 bpm in and 1 bpm out. But was never able to pump down the tbg and up the csg. TOH 6 jnts and set the pkr @ 215'. Tested above the pkr 700 psi for 10 minutes. Held psi no leak off. TIH 8 jnts and set pkr @483'. Attempted to pump down tbg and got no returns. Saw 1000 psi. Pumped 80 bbls down csg and out the tbg. Got 1 bpm out while pumping 1.5 bpm in. until we got dye to surface. 800 psi the entire time we pumped. Attempted to pump down tbg and up the csg. Got no returns and 1000 psi. Secured well and SDFN.

2/3/25: TOH LD 13 jnts 2-7/8 L80 tbg. Double check pkr. OD 6.15. Good for 7 26# and 28# csg. Correct pkr. TIH 34 jnts 2-7/8 L80 tbg and set pkr @1121'. Pumped down tbg and got 2000 psi immediately. No returns to pit out the backside. Pumped down csg and got returns out the tbg immediately. Pumped total of 20 bbls. TOH 21 jnts 2-7/8 L80 tbg and set pkr @ 413'. Pumped down tbg and got 1000 psi immediately. No returns to pit. Pumped down csg and out the tbg. Got returns immediately. Pumped a total of 65 bbls. Got dyed water after 58 bbls pumped @ 1000 psi. Pumped down tbg and caught psi immediately again. No returns at pit. Attempted to surge with no success. Pumped down csg and got returns out the tbg at the pit. Went back and forth 6 six times with no success down tbg, but always got immediate returns when pumping down csg. Got some mud and old cement while pumping down the csg. Decided to continue to pump down the csg and up the tbg in hopes of clearing and heavy trash out. Pumped a total of 60 bbls @ 1.5 bpm. bbl in bbl out. TOH std back 12 jnts 2-7/8 L80 tbg. LD 1 jnts and pkr. Secured well and SDFN.

2/5/25: MIRU WLU. RIH perf @1245'. POOH RDMO WLU. TIH 13 jnts 2-7/8 L80 tbg and a sub. Set pkr @415'. Attempted to circ down tbg and up backside. Got 1000 psi immediately. Circulated down csg and up tbg. Got dye back after 28 bbls pumped. Bbl in bbl out. 1.5 bpm w/1000 psi. TIH 34 jnts and set pkr @1105'. Attempted to circ and got 1500 psi immediately. No returns. TOH 3 jnts and set pkr @1007'. Attempted to circ and got 1000 psi immediately. No returns. TOH 3 jnts and set pkr @910'. Attempted to circ and got 1000 psi immediately. No returns. TOH 3 jnts and set pkr @813'. Attempted to circ and got 1000 psi immediately. No returns. TOH 3 jnts and set pkr @748'. Attempted to circ and got 1000 psi immediately. No returns. TOH 3 jnts and set pkr @656'. Attempted to circ and got 1000 psi immediately. No returns. TOH 3 jnts and set pkr @553'. Attempted to circ and got 1000 psi immediately. No returns. TOH 3 jnts and set pkr @456'. Attempted to circ and got 1000 psi immediately. No returns. After stopped pumping we lost 100 psi (down to 900 psi). Brought it back to 1000 psi. Same results. Worked it for a few minutes and it never broke. Dyed up 10 bbls of 10# BW and added dye to hose going to backside. Pumped down csg and up tbg. Got very light dyed water back after 19 bbls pumped, but only saw it for a few seconds. Continued to pump to 100 bbls gone and never saw dye. Secured well and SDFN.

2/6/25: Attempt to Circ. Decision made and approval granted to perf @ 822' and attempt to circ. Received approval from BLM to perf @822'. MIRU WLU. RIH and perf @822'. POOH. RDMO WLU. TIH 9 jnts 2-7/8 L80 tbg and set pkr @ 784' (total 24 jnts in the hole). Circ down csg and up tbg got immediate returns. 1.5 bpm w/1000 psi. Swapped and attempted to circ down tbg and up csg. Caught psi immediately. 1100 psi. No returns, no movement of fluid. TIH 2 jnts 2-7/8 L80 tbg (total 26 jnts in the hole) and set pkr @845'. Circ down csg and up tbg. Got immediate returns. 1.5 bpm 1000 psi. Swapped and attempted to circ down tbg and up csg. Caught psi immediately 1100 psi. No fluid movement no returns @ pit. TOH std 26 jnts 2-7/8 L80 tbg and pkr. Secured well and SDFN.

2/7/25: TIH 24 jnts 2-7/8 L80 tbg and set pkr @ 784'. Circ down csg and up tbg. Got returns to pit immediately. 1000 psi. Swapped and attempted to circ down tbg and up csg. Got no fluid movement. No returns. PSI @1300. TIH 2 jnts 2-7/8 L80 tbg and set pkr @848'. (total jnts in hole 26). Circulated down csg and up tbg. Got returns immediately. 1000 psi. Swapped and attempted to circ down tbg and up csg. Caught psi immediately. No fluid movement. 1400 psi. Wait on BLM. They approved spotting CMT from 1297' to 1000'. TOH and LD 26 jnts 2-7/8 L80 tbg and pkr. Did not std back tbg due to wind. TIH 40 jnts 2-7/8 L80 tbg and TLOC @1297'. Pulled up. EOT @1294' Broke circ w/5 bbls 10# BW. Spotted 65 sks Class C CMT (FW Mix 9.75 bbls, Slurry Vol 15.25 bbls, CTOC 1000') displaced w/5.25 bbls 10# BW. TOH std back 20 jnts. EOT @364'. Rev circulated 17 bbls 10# BW to clear returns @ pit. Secured well and SDFWE.

2/10/25: TIH 18 jnts 2-7/8 L80 tbg (total in hole 28 jnts) and 5' of jnt 29. TLOC @913'. TOH LD 18 jnts 2-7/8 L80 tbg and std back 10 jnts. TIH 26 jnts and pkr. Set pkr @845'. RU WLU. RIH and perf @910' under psi. No loss of psi when we perfed. POOH. RD WLU. Attempt to circ down tbg and up csg. No returns/no movement of fluid. Caught 1200 psi immediately. Put 1500 psi for 12 minutes. No loss of psi. Unset pkr, TOH std back 26 jnts 2-7/8 L80 tbg. LD pkr. TIH 28 jnts 2-7/8 L80 tbg. EOT @913". Broke circulation w/6 bbls 10# BW. Spotted 25 sks Class C CMT (3.75 bbls FW Mix, 5.9 bbls slurry vol. 155' FOF, CTOC 760') Displaced w/4.25 bbls. TOH std back 28 jnts 2-

7/8 L80 tbg. Put 500 psi on backside. WOC. BD psi. TIH 23 jnts 2-7/8 L80 tbg and 8' of jnt 24. TTOC @757'. TOH LD 4 jnts 2-7/8 L80 tbg and std back 20 jnts. TIH 15 jnts 2-7/8 L80 tbg and set pkt @454'. RU WLU. RIH and perf @752' w/450 psi. No loss of psi. POOH. RD WLU. Attempted to circ down tbg and up csg. Caught 1000 psi immediately. Brought psi up to 1500 and held for 13 minutes. Released psi. Unset pkr TOH std back 14 jnts 2-7/8 L80 tbg. LD 1 jnt. Secured well and SDFN.

2/11/25: LD 1 jnts 2-7/8 L80 tbg. TIH 23 jnts 2-7/8 L80 tbg and a sub. EOT @755'. Break circ w/ bbls 10# BW. Spot 25 sks Class C CMT (3.75 bbls FW mix, 5.9 bbls slurry vol, FOF 154', CTOC 600') Displaced w/3 bbls. TOH std back 22 jnts 2-7/8 L80 tbg. LD 1 jnt and sub 2-7/8 L80 tbg. Secured well and SDFN.

2/12/25: TIH 18 jnts 2-7/8 L80 tbg and TTOC @585'. TOH LD 4 jnts 1-7/8 L80 tbg and std back 14 jnts 2-7/8 L80 tbg. PU pkr and TIH 14 jnts 2-7/8 L80 tbg and set pkr @459'. RU WLU. RIH. Perf @585' under 500 psi. No loss of pressure. BD psi @pump. POOH. RD WLU. Attempted to circ down tbg and up csg. Caught psi immediately. Brought up psi 2000 and held for 13 minutes. Released psi. Circulated down csg and up tbg. Got returns after 2 bbls pumped. Pumped a dye. Got dye back @ pit after 31 bbls pumped @ 1 bpm w/1000 psi. Attempted to forward circ. No returns, no fluid movement. Held @ 2000 psi for 15 minutes. Released pressure. Attempted to feather psi up to 2000 psi. Still no movement. Released psi. Secured well and SDFN.

2/13/25: Unset pkr. TOH std back 14 jnts. Inspect pkr. TIH pkr and 18 jnts 2-7/8 L80 tbg to circ out 10# BW and replace wellbore w/City FW. Circ 35 bbls city fresh to ensure all 10# was out of wellbore. TOH LD 5 jnts and set pkr @ 422'. Circulated 15 bbls City FW to ensure that we had circulation before setting CICR. TOH LD 1 jnts 2-7/8 L80 tbg and std back 12 jnts, so that we can get an accurate tally of tbg. PU CICR and TIH 12 jnts 2-7/8 L80 tbg 1 ea 4' sub and 1 ea jnt 2-7/8 L80 tbg (total jnts in the hole 13 and a sub) pumped through CICR to ensure we had flow. Set CICR @428'. Secured well and SDFN.

2/14/25: PT tbg to 1000 psi for 10 minutes. Stung off of CICR and stung back on. Turned to the right 10 times to take it off of tbg test mode. Circulated down csg and up tbg. Pumped 30 bbls FW @ 1000 psi 1 bpm w/no returns to pit. Stung oof of CICR and pumped down csg to see if there may be trash over CICR. Stung back on and attempted again. Pumped 30 bbls FW w/no returns to pit. Tried to pump down tbg and up csg but caught psi immediately (1200 psi) w/no movement of fluid from the pump tanks. DO CICR. Secured well and SDFN.

2/15/25: TOH LD 1 jnt 2-7/8 L80 tbg and sub. TOH std back 12 jnts, LD CICR stinger. MIRU rev pmp and pit. Secured well and SDFN.

2/16/25: PU BHA, TIH Tag CICR @428', begin to DO CICR. Secured well and SDFN.

2/17/25: Cont DO CICR. Secured well and SDFN.

2/18/25: Finish DO CICR. TIH and TTOC @584' w BHA and 12 full jnts of 2-7/8 L80 tbg. TOH std back 12 jnts 2-7/8 L80 tbg. LD BHA RD rev pump and pit. Secured well and SDFN.

2/19/25: Circ 40 bbls 10# BW to remove FW. Spot 25 sks Class C CMT (3.75 bbls FW Mix, 5.9 bbls slurry vol, 154' FOF) Displace 3 bbls 10#. TOH std back 4 jnts 2-7/8 L80 tbg and reversed out 12 bbls to clean returns at pit. TOH std back 12 jnts 2-7/8 L80. LD 1 jnt. WOC. PU 7" AD1 pkr and TIH 12 jnts 2-7/8 L80 tbg and partial of jnt 13. TTOC @ 414'. TOH LD 2 jnts 2-7/8 L80 tbg (11 jnts in hole) PU 16' in subs and set pkr @377'. EIR 20 bbls 10# BW. 2 bpm 1000 psi. Sqz 25 sks Class C CMT (3.75 bbls FW Mix, 5.9 bbls slurry,) Shut in TIW valve. Cleaned up hose. Connected hose, opened TIW valve and displaced 2.8 bbls. Shut in TIW valve w/400 psi. Secured well. SDFN.

2/20/25: TOH. TIH 12 jnts and 10' of jnt 13. TTOC @400'. TOH 12 jnts 2-7/8 L80 tbg. LD 1 jnts. TIH 12 jnts and 10' sub. PU 1'. Spotted 65 sks to returns at surface. TOH LD 12 jnts and a 10' sub RD PU and all equipment.

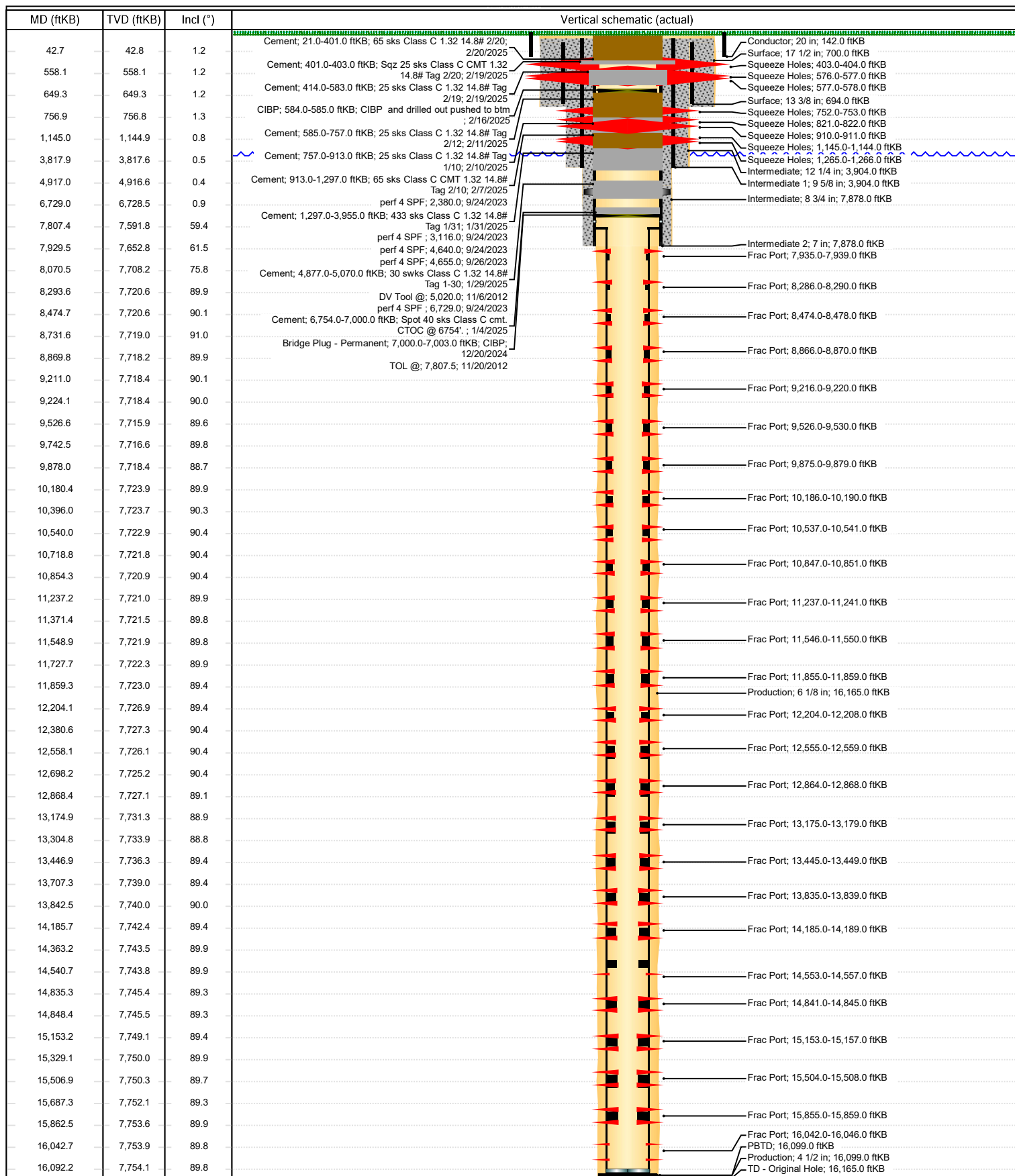
4/1/25: WH cutoff and DHM set.



Schematic - Vertical with Perfs

Well Name: Poker Lake Unit 318H

API/UWI 3001539731	SAP Cost Center ID 1139791001	Permit Number	State/Province New Mexico	County Eddy
Surface Location T24S-R30E-S04	Spud Date 10/21/2012 01:45	Original KB Elevation (ft) 3,436.00	Ground Elevation (ft) 3,415.00	KB-Ground Distance (ft) 21.00



Sante Fe Main Office
Phone: (505) 476-3441

General Information
Phone: (505) 629-6116

Online Phone Directory
<https://www.emnrd.nm.gov/ocd/contact-us>

State of New Mexico
Energy, Minerals and Natural Resources
Oil Conservation Division
1220 S. St Francis Dr.
Santa Fe, NM 87505

CONDITIONS

Action 453751

CONDITIONS

Operator: XTO PERMIAN OPERATING LLC. 6401 HOLIDAY HILL ROAD MIDLAND, TX 79707	OGRID: 373075
	Action Number: 453751
	Action Type: [C-103] Sub. Plugging (C-103P)

CONDITIONS

Created By	Condition	Condition Date
gcordero	None	4/24/2025