

Santa Fe Main Office Phone: (505) 476-3441 Fax: (55) 476-3462 General Information Phone: (505) 629-6116 Online Phone Directory Visit: https://www.emnrd.nm.gov/ocd/contact-us/	State of New Mexico Energy, Minerals & Natural Resources Department OIL CONSERVATION DIVISION	C-104 Revised July 9, 2024 Submit Electronically Via OCD Permitting
----------------------------------------------------------------------------------------------------------------------------------------------------------------------------------------------------------------------------------------------------------	------------------------------------------------------------------------------------------------------------	-----------------------------------------------------------------------------------------

REQUEST FOR ALLOWABLE AND AUTHORIZATION TO TRANSPORT

Section 1 - Operator and Well Information

Submittal Type: <input type="checkbox"/> Test Allowable (C-104RT) <input type="checkbox"/> New Well (C-104NW) <input checked="" type="checkbox"/> Recomplete (C-104RC) <input type="checkbox"/> Pay Add (C-104RC) <input type="checkbox"/> Amended	
Operator Name: Hilcorp Energy Company	OGRID: 372171
Property Name and Well Number: Pierce 2A	Property Code: 318658
Mineral Owner: <input type="checkbox"/> State <input checked="" type="checkbox"/> Fee <input type="checkbox"/> Tribal <input type="checkbox"/> Federal	API Number: 30-045-21815
Pool Name: Basin Fruitland Coal (Gas)	Pool Code: 71629

Section 2 – Surface Location

UL	Section	Township	Range	Lot	Ft. from N/S	Ft. from E/W	Latitude	Longitude	County
J	08	30N	09W		1700' FSL	1480' FEL	36.823391	-107.7999191	San Juan


Section 3 – Completion Information

Producing Method FLOWING	Ready Date 4/1/2025	Perforations MD 2751' – 2988'	Perforations TVD 2751' – 2988'
-----------------------------	------------------------	----------------------------------	-----------------------------------

Section 4 – Action IDs for Submissions and Order Numbers

List Action IDs for Drilling Sundries	Was an Order required / needed (Y/N), if yes list Order number:
C-104 RT Action ID (if C-104NW): 441105	Communitization Agreement <input type="checkbox"/> Yes <input checked="" type="checkbox"/> No, Order No.
Surface Casing Action ID: PREVIOUS TO SYSTEM	Unit: <input type="checkbox"/> Yes <input checked="" type="checkbox"/> No, Order No.
Intermediate 1 Casing Action ID: PREVIOUS TO SYSTEM	Compulsory Pooling: <input type="checkbox"/> Yes <input checked="" type="checkbox"/> No, Order No.
Intermediate 2 Casing Action ID: PREVIOUS TO SYSTEM	Down Hole Commingling: <input checked="" type="checkbox"/> Yes <input type="checkbox"/> No, Order No. 5471
Production Casing Action ID: PREVIOUS TO SYSTEM	Surface Commingling: <input type="checkbox"/> Yes <input checked="" type="checkbox"/> No, Order No.
All casing was pressure tested in accordance with NMAC <input checked="" type="checkbox"/> Yes <input type="checkbox"/> No	Non-standard Location: <input type="checkbox"/> Yes <input checked="" type="checkbox"/> No <input type="checkbox"/> Common ownership Order No.
Liner 1 Action ID: PREVIOUS TO SYSTEM	Non-standard Proration: <input type="checkbox"/> Yes <input checked="" type="checkbox"/> No, Order No.
Casing was installed prior to OCD's Action ID system (Y/N): YES	Simultaneous Dedication: <input type="checkbox"/> Yes <input checked="" type="checkbox"/> No, Order No.

Section 5 - Operator Signature and Certification

<input checked="" type="checkbox"/> I hereby certify that the required Water Use Report has been, or will be, submitted for this well's completion.	
<input checked="" type="checkbox"/> I hereby certify that the required Fracfocus disclosure has been, or will be, submitted for this well's completion.	
<input checked="" type="checkbox"/> I hereby certify that the rules of the Oil Conservation Division have been complied with and that the information given above is true and complete to the best of my knowledge and belief.	
Name: 	
Title: Operations Regulatory Tech Sr.	Date: 4/3/2025

South Formations				North Formations			
Formation/Zone	MD	TVD	W/O/G	Formation/Zone	MD	TVD	W/O/G
T. Anhy				T. San Jose			
T. Salt				T. Nacimiento			
B. Salt				T. Ojo Alamo	1679'	1679'	W
T. Yates				T. Kirtland	1800'	1800'	W
T. 7 Rivers				T. Fruitland	2620'	2620'	G/W
T. Queen				T. Pictured Cliffs	2990'	2990'	G/W
T. Grayburg				T. Lewis Shale	3169'	3169'	G/W
T. San Andres				T. Chacra	4020'	4020'	G/W
T. Glorieta				T. Cliff House	4494'	4494'	G/W
T. Yeso				T. Menefee	4806'	4806'	G/W
T. Paddock				T. Point Lookout	5206'	5206'	G/W
T. Blinebry				T. Mancos			
T.Tubb				T. Gallup			
T. Drinkard				T. Greenhorn			
T. Abo				T. Graneros			
T. Wolfcamp				T. Dakota			
T. Penn				T. Morrison			
T. Cisco				T. Bluff			
T. Canyon				T.Todilto			
T. Strawn				T. Entrada			
T. Atoka				T. Wingate			
T. Morrow				T. Chinle			
T. Barnett Shale				T. Permian			
T. Miss				T. Penn A"			
T. Woodford Shale				T. Penn. "B"			
T. Devonian				T. Penn. "C"			
T. Silurian				T. Penn. "D"			
T. Fusselman				T. Leadville			
T. Montoya				T. Madison			
T. Simpson				T. Elbert			
T. McKee				T. McCracken			
T. Waddell				T. Ignacio Otzte			
T. Connel				T. Granite			
T. Ellenburger				T. Hermosa			
T. Gr. Wash				T. De Chelly			
T. Delaware Sand				T. Pinkerton			
T. Lamar Lime							
T. Bell Canyon							
T. Cherry Canyon							
T. Brushy Canyon							
T. Bone Springs							
T. 1st BS Sand							
T. 2nd BS Carbonate							
T. 2nd BS Sand							
T. 3rd BS Carbonate							
T. 3rd BS Sand							

Santa Fe Main Office
Phone: (505) 476-3441
General Information
Phone: (505) 629-6116

State of New Mexico
Energy, Minerals and Natural Resources

Revised July 18, 2013

Online Phone Directory Visit:
<https://www.emnrd.nm.gov/ocd/contact-us/>

OIL CONSERVATION DIVISION
1220 South St. Francis Dr.
Santa Fe, NM 87505

SUNDRY NOTICES AND REPORTS ON WELLS (DO NOT USE THIS FORM FOR PROPOSALS TO DRILL OR TO DEEPEN OR PLUG BACK TO A DIFFERENT RESERVOIR. USE "APPLICATION FOR PERMIT" (FORM C-101) FOR SUCH PROPOSALS.)		WELL API NO. 30-045-21815
1. Type of Well: <input type="checkbox"/> Oil Well <input checked="" type="checkbox"/> Gas Well <input type="checkbox"/> Other		5. Indicate Type of Lease STATE <input type="checkbox"/> FEE <input checked="" type="checkbox"/>
2. Name of Operator Hilcorp Energy Company		6. State Oil & Gas Lease No. FEE
3. Address of Operator 382 Road 3100 Aztec, NM 87410		7. Lease Name or Unit Agreement Name PIERCE
4. Well Location Unit Letter J Footage 1700' FSL & 1480' FEL Section 08 Township 030N Range 009W SAN JUAN COUNTY		8. Well Number 2A
11. Elevation (Show whether DR, RKB, RT, GR, etc.) 6242' GR		9. OGRID Number 372171
10. Pool name or Wildcat FRC - BASIN CB::FRUITLAND COAL MV - BLANCO::MESAVERDE		

12. CHECK APPROPRIATE BOX(ES) TO INDICATE NATURE OF NOTICE, REPORT OR OTHER DATA

NOTICE OF INTENTION TO:

PERFORM REMEDIAL WORK ☐ PLUG AND ABANDON ☐
 TEMPORARILY ABANDON ☐ CHANGE PLANS ☐
 PULL OR ALTER CASING ☐ MULTIPLE COMPL ☐
 DOWNHOLE COMMINGLE ☐
 CLOSED-LOOP SYSTEM ☐
 OTHER: ☐

SUBSEQUENT REPORT OF:

REMEDIAL WORK ☐ ALTERING CASING ☐
 COMMENCE DRILLING OPNS. ☐ P AND A ☐
 CASING/CEMENT JOB ☐
 OTHER: ☒ - SR Recomplete

13. Describe proposed or completed operations. (Clearly state all pertinent details, and give pertinent dates, including estimated date of starting any proposed work). SEE RULE 19.15.7.14 NMAC. For Multiple Completions: Attach wellbore diagram of proposed completion or recompletion.

The following well has been recompleted into the Fruitland Coal and is now producing as a FC/MV commingle under DHC 5471. Please see the attached for the recompletion operations.

Spud Date: Rig Released Date:

I hereby certify that the information above is true and complete to the best of my knowledge and belief.

SIGNATURE



TITLE Operations/Regulatory Tech - Sr.

DATE 4/4/2025

Type or print name

Amanda Walker

E-mail address:

mwalker@hilcorp.com

PHONE: 346.237.2177

APPROVED BY:

TITLE

DATE

Conditions of Approval (if any):



Well Operations Summary L48

Well Name: PIERCE #2A

API: 3004521815

Field: BLANCO MV (PRO #0078

State: NEW MEXICO

Permit to Drill (PTD) #:

Sundry #:

Rig/Service: RIGLESS 1

Jobs

Actual Start Date: 3/10/2025

End Date: 4/1/2025

Report Number 1	Report Start Date 3/10/2025	Report End Date 3/10/2025
--------------------	--------------------------------	------------------------------

Operation

MOVE RIG FROM THE WALKER 1B TO THE PIERCE #2A
(7 MILE MOVE). SPOT RIG AND EQUIPMENT.

RIG UP.

SITP: 0 PSI

SICP: 77 PSI

SIIC: 0 PSI

SIBH: 0 PSI

BLOW DOWN 5 MIN

CHECK DRIVELINE FLANGE.

NIPPLE DOWN WELLHEAD, NIPPLE UP BOPE. RIG UP FLOOR.

PULL AND LAY DOWN TUBING HANGER, DID NOT TAG FOR FILL

RIG UP TUBOSCOPE SCANNING EQUIPMENT.

TRIP OUT OF HOLE INSPECTING 2-3/8" J-55 TUBING.

0- YELLOW

52- BLUE

6- GREEN

116- RED

TWISTED OFF TUBING BELOW UPSET ON SEVERAL JOINTS. MULTIPLE HOLES

RIG DOWN TUBOSCOPE SCANNING EQUIPMENT.

SECURE WELL AND LOCATION

TRAVEL TO YARD

Report Number 2	Report Start Date 3/11/2025	Report End Date 3/11/2025
--------------------	--------------------------------	------------------------------

Operation

CREW TRAVEL TO LOCATION

SERVICE AND START EQUIPMENT

SITP: 0 PSI

SICP: 50 PSI

SIIC: 0 PSI

SIBH: 0 PSI

BLOW DOWN 5 MIN

CHANGE OUT TUBING FLOAT.

PICK UP 4 1/2" STRING MILL AND TRIP IN THE HOLE PICKING UP 143 JOINTS OF 2 3/8" TUBING TO 4615'.

TRIP OUT OF THE HOLE WITH 4 1/2" STRING MILL.

PICK UP 7" STRING MILL AND TRIP IN THE WITH 99 JOINTS TO 3173'. TRIP OUT OF THE HOLE, LAY DOWN 7" STRING MILL.

PICK UP 4 1/2" CIBP AND TRIP IN THE HOLE. **SET CIBP AT 4580'**. THIS IS 44' ABOVE MESA VERDE PERFS.

PUMP 130 BBLS OF BIOCIDAL WATER.

SECURE WELL AND LOCATION.

TRAVEL TO YARD

Report Number 3	Report Start Date 3/12/2025	Report End Date 3/12/2025
--------------------	--------------------------------	------------------------------

Operation

CREW TRAVEL TO LOCATION.

SERVICE AND START EQUIPMENT

SITP: 0 PSI

SICP: 0 PSI

SIBH: 0 PSI

NO BLOW DOWN.

PRESSURE TEST CASING AND CIBP TO 600 PSI FOR 30 MINUTES, GOOD TEST.

TRIP OUT OF THE HOLE WITH SETTING TOOL, LAY DOWN 42 JOINTS, STAND BACK 100 JOINTS.

RIG UP THE WIRELINE GROUP AND RUN CBL. CEMENT TOP AT 1810'.

SEND IN RESULTS AND WAIT ON APPROVAL FROM THE NMOC TO PERFORATE SQUEEZE HOLE. RECEIVED APPROVAL TO SHOOT SQUEEZE HOLES AT 2770'.



Well Operations Summary L48

Well Name: PIERCE #2A

API: 3004521815

Field: BLANCO MV (PRO #0078

State: NEW MEXICO

Sundry #:

Rig/Service: RIGLESS 1

Operation

PICK UP THE WIRELINE GROUP SQUEEZE GUN AND SHOOT 1 GUN WITH 4 SHOTS AT 2770'.

ATTEMPT TO ESTABLISH CIRCULATION UP SQUEEZE HOLE PUMPING 20 BBLS OF WATER 1.2 BPM AT 500 PSI. NO CIRCULATION, PUMPING INTO FORMATION.

CALL IN RESULTS AND DISCUSS A PLAN FORWARD, DECISION WAS MADE TO PERFORM A SUICIDE SQUEEZE, OCD APPROVAL RECEIVED. SECURE WELL AND LOCATION.

TRAVEL TO YARD

Report Number
4Report Start Date
3/13/2025Report End Date
3/13/2025

Operation

CREW TRAVEL TO LOCATION.

SERVICE AND START EQUIPMENT.

SITP: 0 PSI
SICP: 0 PSI
SIBH: 0 PSI
NO BLOW DOWN

OCD APPROVAL RECEIVED TO SHOOT UPPER SQUEEZE HOLES

RIG UP THE WIRELINE GROUP AND RUN IN HOLE WITH SQUEEZE GUN AND SHOOT 4 SHOTS AT 2500'

PICK UP 7" PACKER AND TRIP IN THE HOLE, SET PACKER ABOVE LOWER PERF HOLES AT 2758'.

ESTABLISH CIRCULATION AT 2 BPM 450 PSI. GOOD CIRCULATION

TRIP OUT OF THE HOLE LAY DOWN PACKER, PICK UP 7" CEMENT RETAINER AND TRIP IN THE HOLE, SET AT 2721'.

RIG UP DRAKE ENERGY SERVICES, PJSM, PRESSURE TEST LINES TO 1500 PSI. ATTEMPT TO CIRCULATE, NO RETURNS, PUMPING 550 PSI AT 2 BPM. REVERSE CIRCULATE CLEARING PERF HOLES. ESTABLISH CIRCULATION DOWN TUBING, GOOD RETURNS,

CEMENT THROUGH RETAINER PUMP CEMENT SQUEEZE WITH 56 SXS OF CLASS G CEMENT 1.15 YIELD 15.8 LB CEMENT. 11.5 BBLS OF SLURRY,. LAY DOWN 2 JOINTS AND REVERSE OUT, CEMENT WATER.

TRIP OUT THE HOLE TO 2532' EOT

SPOT 150' BALANCED PLUG 2532' TO 2382. CEMENT WITH 30 SXS CLASS G CEMENT 1.15 YIELD 15.8# CEMENT 6.1 BBLS OF SLURRY.

SLOWLY TRIP OUT FOR THE HOLE, SHUT IN BOPE AND SQUEEZE ON CEMENT. SQUEEZE IN 4.5 BBLS AT 500 PSI. HESITATE 3 TIMES.

DRAIN EQUIPMENT, SECURE WELL AND LOCATION.

TRAVEL TO YARD

Report Number
5Report Start Date
3/14/2025Report End Date
3/14/2025

Operation

CREW TRAVEL TO LOCATION.

SERVICE AND START EQUIPMENT.

SITP: 0 PSI
SICP: 0 PSI
SIBH: 0 PSI
NO BLOW DOWN

CLEAR SNOW OFF TUBING FLOATS

PICK UP 6 1/4" 5 BLADE JUNK MILL, 6 - 3 1/8" DRILL COLLARS AND TRIP IN THE HOLE, TAG CEMENT AT 2486' SQUEEZE PERFS AT 2500'.

PICK UP AND RIG UP POWER SWIVEL

DRILL CEMENT 2486' TO 2519'.

PRESSURE TEST SQUEEZE HOLES AT 2500. TEST TO 560 PSI FOR 30 MINUTES, LOST 10 PSI.

TRIP IN THE HOLE PICKING UP TUBING WITH SWIVEL, TAG 27' OF CEMENT ON RETAINER AT 2694',

DRILL 7" CEMENT AND RETAINER.

DRAIN EQUIPMENT. SECURE WELL AND LOCATION.

TRAVEL TO YARD

Report Number
6Report Start Date
3/15/2025Report End Date
3/15/2025

Operation

CREW TRAVEL TO LOCATION.

SERVICE AND START EQUIPMENT.

SITP: 0 PSI
SICP: 0 PSI
SIBH: 0 PSI
NO BLOW DOWN

CLEAR SNOW OFF TUBING FLOATS

PICK UP POWER SWIVEL AND PICK UP 2 JOINTS OF TUBING.

CONTINUE TO DRILL CEMENT AND RETAINER PARTS 2742' TO 2772'.

PRESSURE TEST SQUEEZE HOLES AT 2500' AND 2772 TEST TO 560 PSI FOR 30 MINUTES, PRESSURE RISING DUE TO COLD WATER EXPANSION.



Well Operations Summary L48

Well Name: PIERCE #2A

API: 3004521815

Field: BLANCO MV (PRO #0078

State: NEW MEXICO

Sundry #:

Rig/Service: RIGLESS 1

Operation

CHASE PLUG PARTS TO LINER TOP AT 3175'.
TRIP OUT OF THE HOLE WITH TUBING, LAY DOWN DRILL COLLARS.
RIG UP THE WIRELINE GROUP AND RUN CBL FROM LINER TOP 3175 TO SURFACE. SEND IN RESULTS.
DRAIN EQUIPMENT. SECURE WELL AND LOCATION.
TRAVEL TO YARD

Report Number
7Report Start Date
3/17/2025Report End Date
3/17/2025

Operation

CREW TRAVEL TO LOCATION.
SERVICE AND START EQUIPMENT.
.
SITP: 0 PSI
SICP: 0 PSI SIBH:
0 PSI
NO BLOW DOWN
RIG UP WELLCHECK FOR PRE MIT.
WAIT ON AND RUN WITNESSED MIT 580 PSI FOR 30 MINUTES, WITNESSED BY THOMAS WITH NMOC, GOOD TEST.
TRIP IN THE WITH TUBING, TRIP OUT LAYING DOWN 100 JOINTS OF 2 3/8" TUBING.
RIG DOWN FLOOR, NIPPLE DOWN WELLHEAD.
NIPPLE DOWN WELLHEAD, STUB UP 7" CASING, NIPPLE UP 5K WELLHEAD. PRESSURE TEST VOID TO 1500 PSI.
NIPPLE UP BOPE, RIG UP FLOOR.
DRAIN EQUIPMENT. SECURE WELL AND LOCATION.
TRAVEL TO YARD

Report Number
8Report Start Date
3/18/2025Report End Date
3/18/2025

Operation

CREW TRAVEL TO LOCATION.
PJSM, CK PRESSURES. SITP- N/A. SICP-0 PSI. SIBHP 0 PSI. NO BLOW DOWN.
MOVE HOT SHOT TRAILER, MIRU BASIN WIRELINE. RIH AND SET CBP @3038'. RIH WITH PERF GUN, SEND IN GAMMA STRIP TO HEC ENGINEER PERF @ @2965'- 2988' 4SPF 0.34" DIA AND 80 TOTAL SHOTS. RIH AND SET HEC FRAC THRU PLUG @2947'. R/D WIRELINE.
R/U WILSON HYDROTESTERS, M/U AS1-X PACKER P/U AND TALLY FRAC STRING HYDROTESTING TO 8100 PSI. M/U TBG HANGER AND TEST TO 8100 PSI. R/D HYDRO-TESTER. SET PACKER AT 2704' W/ 20K COMPRESSION. LAND FRAC STRING. LOAD BACK SIDE W/ 1 BBL FRESH. PRESSURE TEST BACK SIDE TO 500 PSI, GOOD TEST.
R/D RIG FLOOR.
DRAIN EQUIPMENT. SECURE WELL AND LOCATION.
CREW TRAVEL TO YARD.

Report Number
9Report Start Date
3/19/2025Report End Date
3/19/2025

Operation

CREW TRAVEL TO LOCATION.
SERVICE AND START EQUIPMENT.
.
SITP: 0 PSI
SICP: 0 PSI
SIBH: 0 PSI
NO BLOW DOWN
RIG DOWN FLOOR, NIPPLE DOWN BOPE,

NIPPLE UP FRAC STACK, PRESSURE TEST, BAD 2" OUTLET VALVE.
WAIT ON AND REPLACE FRAC VALVE.
PRESSURE TEST FRAC STACK 9000 PSI FOR 30 MINUTES, GOOD TEST.

LAY DOWN DERRICK. RIG RELEASED TO THE EPNG COM A 300S

Report Number
10Report Start Date
3/27/2025Report End Date
3/27/2025

Operation

MOVE IN AND SPOT GORE N2 SERVICES AND BASIN WELL LOGGING.
RIG UP FRAC AND N2 EQUIPMENT. COOL DOWN N2 PUMPS.
PRIME EQUIPMENT. PRESSURE TEST FLUID LINES TO 7,800 PSI. GOOD TEST. PRESSURE TEST N2 LINES TO 7,800 PSI. GOOD TEST.
HELD PRE JOB SAFETY MEETING WITH ALL PERSONNEL ON LOCATION.



Well Operations Summary L48

Well Name: PIERCE #2A

API: 3004521815

Field: BLANCO MV (PRO

#0078

State: NEW MEXICO

Sundry #:

Rig/Service: RIGLESS 1

Operation

FRUITLAND ZONE (BROWN) STIMULATION: (2,965' - 2,988')

FRAC AT 50 BPM W/ 70Q N2 FOAM.
TOTAL LOAD: 452 BBLS
SLICKWATER: 428 BBLS
TOTAL ACID: 24 BBLS
TOTAL 30/50 SAND: 45,123 LBS
TOTAL 100 MESH SAND: 5,052 LBS
TOTAL N2: 545,000 SCF
AVERAGE RATE: 49.8 BPM
MAX RATE: 50.7 BPM
AVERAGE PRESSURE: 2,505 PSI
MAX PRESSURE: 3,028 PSI
MAX SAND CONC: 2.5 PPG DOWNHOLE.
ISIP: 526 PSI
5 MIN: 217 PSI

DROP AND SEAT ISOLATION BALL. GOOD SEAT.

PERFORATE FRUITLAND ZONE (BLUE/SAND) FROM 2,751' - 2,857' 3 SPF, 2,873' - 2,879' 4 SPF, 2,917' - 2,927' 3 SPF 0.33" DIA WITH 2-1/2" GUNS. 156 HOLES TOTAL.

FRUITLAND (GREEN/PURPLE/BLUE) STIMULATION: (2,751' - 2,927')

FRAC AT 50 BPM W/ 70Q N2 FOAM.
TOTAL LOAD: 1,069 BBLS
SLICKWATER: 1,045 BBLS
TOTAL ACID: 24 BBLS
TOTAL 30/50 SAND: 120,432 LBS
TOTAL 100 MESH SAND: 12,782 LBS
TOTAL N2: 1,404,000 SCF
AVERAGE RATE: 39.9 BPM
MAX RATE: 51.7 BPM
AVERAGE PRESSURE: 2,476 PSI
MAX PRESSURE: 2,706 PSI
MAX SAND CONC: 2.5 PPG DOWNHOLE.
ISIP: 1,304 PSI
5 MIN: 935

DROPPED 54 RCN BALLS AFTER 42,000 LBS. DROPPED 66 RCN BALLS AFTER 84,000 LBS.

SHUT IN, SECURE WELL AND LOCATION.

RIG DOWN FRAC AND WIRELINE EQUIPMENT.

Report Number 11	Report Start Date 3/28/2025	Report End Date 3/28/2025
---------------------	--------------------------------	------------------------------

Operation

CREW TRAVEL TO THE PIERCE 2A.

PJSM, LOAD EQUIPMENT. MOB RIG AND EQUIPMENT TO THE PIERCE 2A(7 MILE MOVE).

SPOT IN EQUIPMENT AND RIG UP RIG. SITP- 1300 PSI SICP-0, SITP, SIBHP-0. TBG FLOWING @600 PSI.

LUBRICATE TWC INTO HANGER. N/D FRAC STACK, N/U BOP. R/U RIG FLOOR. RU WSI AND PRESSURE TEST BLINDS AND PIPE RAMS(250 PSI 5 MIN AND 2500 PSI 10 MIN), GOOD TEST. R/D WSI.

UNSET PACKER, PULL HANGER TO SURFACE, LUBRICATE TWC OUT, PUMP 60 BBL KILL DOWN TBG. LD 3 1/2" FRAC STRING(84 JNTS). HAD TO KILL WELL TWICE WHILE L/D FRAC STRING, PUMPED A TOTAL OF 120 BBLS OF FW. SWAP HANDLING TOOLS FOR 2 3/8" TBG.

M/U 6 1/4" JUNK MILL, P/U AND TALLY DC'S AND TBG TO 2570'.

SISW. SECURE WELL. DEBRIEF CREW.

CREW TRAVEL TO YARD.

Report Number 12	Report Start Date 3/29/2025	Report End Date 3/29/2025
---------------------	--------------------------------	------------------------------

Operation

CREW TRAVEL TO LOCATION.

PJSM, CK PRESSURES. SITP 0 PSI(STRING FLOAT). SICP- 960 PSI. SIBHP 0 PSI. BLED OFF TO 80 PSI IN 30 MIN, FLOWING AT 80 PSI.

P/U AND TALLY TBG, TAG @2939'(8' OF FILL), R/U POWER SWIVEL.

EST CIRC WITH AIR/MIST 1100 CFM. 12 BBLS/ HR MIST RATE 2 GAL/HR FOAMER 1 GAL/HR INHIBITOR. CIRCULATING PRESSURE 550 PSI, CASING PRESSURE 100 PSI. CLEANOUT SAND FROM 2939' TO 2947' **DRILL OUT PLUG #1 AT 2947'** (1.5 HRS TO DRILL) MAKING LIGHT PLUG PARTS AND SAND PER 5 GAL SAMPLE. P/U 3 JNTS WITH POWER SWIVEL AND TAG @3020'(18' OF FILL ON TOP OF PLUG #2). CLEANOUT SAND FROM 3026' TO 3038' AND **DRILL OUT PLUG #2 AT 3038'**(2.25 HR TO DRILL PLUG). MAKING 1/4 BUCKET OF SAND AND LIGHT PLUG PARTS PER SAMPLE. P/U 4 JNTS WITH SWIVEL TO 3175' AND DRILL OUT PLUG PARTS ON LINER TOP. CIRC CLEAN. R/D POWER SWIVEL.

TOOH WITH TBG AND DC'S, L/D 6 1/4' BIT. PUMPED 40 BBL KILL WITH 10 STANDS LEFT IN WELL.

M/U 3 7/8" JUNK MILL, TIH WITH DC'S AND TBG FROM DERRICK, P/U 4 JNTS AND TAG PLUG PARTS @3279', R/U POWER SWIVEL.

EST CIRC WITH AIR MIST, DRILL OUT PLUG PARTS FROM 3279' TO 3282'. CIRC CLEAN.

R/D POWER SWIVEL. TOOH ABOVE LINER PUTTING EOT @3149'.



Well Operations Summary L48

Well Name: PIERCE #2A

API: 3004521815

Field: BLANCO MV (PRO #0078

State: NEW MEXICO

Sundry #:

Rig/Service: RIGLESS 1

Operation

SISW. SECURE WELL. DEBRIEF CREW.

CREW TRAVEL TO YARD.

Report Number
13

Report Start Date
3/30/2025

Report End Date
3/30/2025

Operation

CREW TRAVEL TO LOCATION.

PJSM, CK PRESSURES. SITP 0 PSI (STRING FLOAT). SICP- 700 PSI. SIBHP 0 PSI. FLOWING AT 80 PSI AFTER 30 MIN.

P/U AND TALLY TBG, TAGGED @4490', 90' OF FILL ON TOP OF PLUG #3. R/U POWER SWIVEL.

EST CIRC WITH AIR/MIST 1100 CFM. 12 BBLS/ HR MIST RATE 2 GAL/HR FOAMER 1 GAL/HR INHIBITOR. CIRCULATING PRESSURE 550 PSI, CASING PRESSURE 100 PSI. CLEANOUT SAND AND PLUG PARTS FROM 4490' TO 4580' **DRILL OUT PLUG #3 FROM 4580'** (1.5 HRS TO DRILL). MAKING LIGHT PLUG PARTS AND SAND PER 5 GAL SAMPLE. P/U 3 JNTS WITH POWER SWIVEL. R/D POWER SWIVEL.

P/U AND TALLY TBG(31 JNTS), TAG @5481'(62' OF FILL). R/U POWER SWIVEL.

EST CIRC WITH AIR/MIST 1100 CFM. 12 BBLS/ HR MIST RATE 2 GAL/HR FOAMER 1 GAL/HR INHIBITOR. CIRCULATING PRESSURE 600 PSI, CASING PRESSURE 50 PSI. CLEANOUT SAND AND PLUG PARTS FROM 5481' TO 5550'. MAKING LIGHT PLUG PARTS AND SAND PER 5 GAL SAMPLE. PUMPED SWEEPS AS NEEDED, CIRC TO TRACE OF SAND. L/D 2 JNTS WITH POWER SWIVEL. R/D POWER SWIVEL.

TOOH WITH TBG, L/D DC'S AND BIT.

M.U PRODUCTION BHA, TIH WITH TBG AND LAND.

- (1) - 2 3/8" BULL PLUG (.65')
- (1) - 2 3/8" 10' TBG PUP
- (1) - 2 3/8" PGA-1 (31') SLOTS 16' BELOW UPSET
- (1) - 2 3/8" X 1.78 SEAT-NIPPLE (1.10')
- (171)- 2 3/8" 4.7# J-55 TBG (5476.30')
- (1) - 7-1/16" TUBING HANGER

EOT @ 5534.05'

SEAT NIPPLE @ 5491.30'

PBTD @ 5550'

R/D RIG FLOOR, N/D BOP, N/U WELLHEAD.

SISW. SECURE WELL. DEBRIEF CREW.

CREW TRAVEL TO YARD.

Report Number
14

Report Start Date
3/31/2025

Report End Date
3/31/2025

Operation

CREW TRAVEL TO LOCATION.

PJSM, CK PRESSURES. SITP 0 PSI. SICP- 180 PSI. SIBHP 0 PSI. BLED OFF TO 30 PSI IN 30 MIN.

PICK UP PUMP, STROKE TEST AT SURFACE. P/U REFURBISHED ROD STRING. SPACE OUT AND SEAT PUMP.

- (1) - 1" X 8' STRAINER NIPPLE
- (1) - 2" X 1 1/4" X 10' X 14' RHAC-Z HVR #HIL1145
- (1) - 3/4" X 8' GUIDED PONY ROD.
- (1) - 21K SHEAR TOOL.
- (10) - 1 1/4" SINKER BARS
- (208)- 3/4" SLICK RODS
- (1)- 3/4" X 4' PONY RODS.
- (1)- 22' X POLISH ROD.

LOAD TUBING WITH 15 BBLS OF FW, PRESSURE TEST TO 1000 PSI. GOOD TEST. BLEED DOWN PRESSURE TO 200 PSI, LONG STROKE PUMP WITH RIG UP TO 1000 PSI, BLEED OFF PRESSURE. PRESSURE TEST WITNESSED BY JOHN R. STACKED RODS OUT PER MSO.

Report Number
15

Report Start Date
4/1/2025

Report End Date
4/1/2025

Operation

MOVE IN IDEAL COMPLETIONS EQUIPMENT. R/U SEPARATION EQUIPMENT. FLOWBACK WELL TO FLARE. MONITOR O2 CONTENT. SELLABLE GAS ACHIEVED. TURNED GAS TO SALES LINE FOR 4 HOURS. SIW. TURN WELL OVER TO PRODUCTION. RDMO IDEAL COMPLETIONS EQUIPMENT.

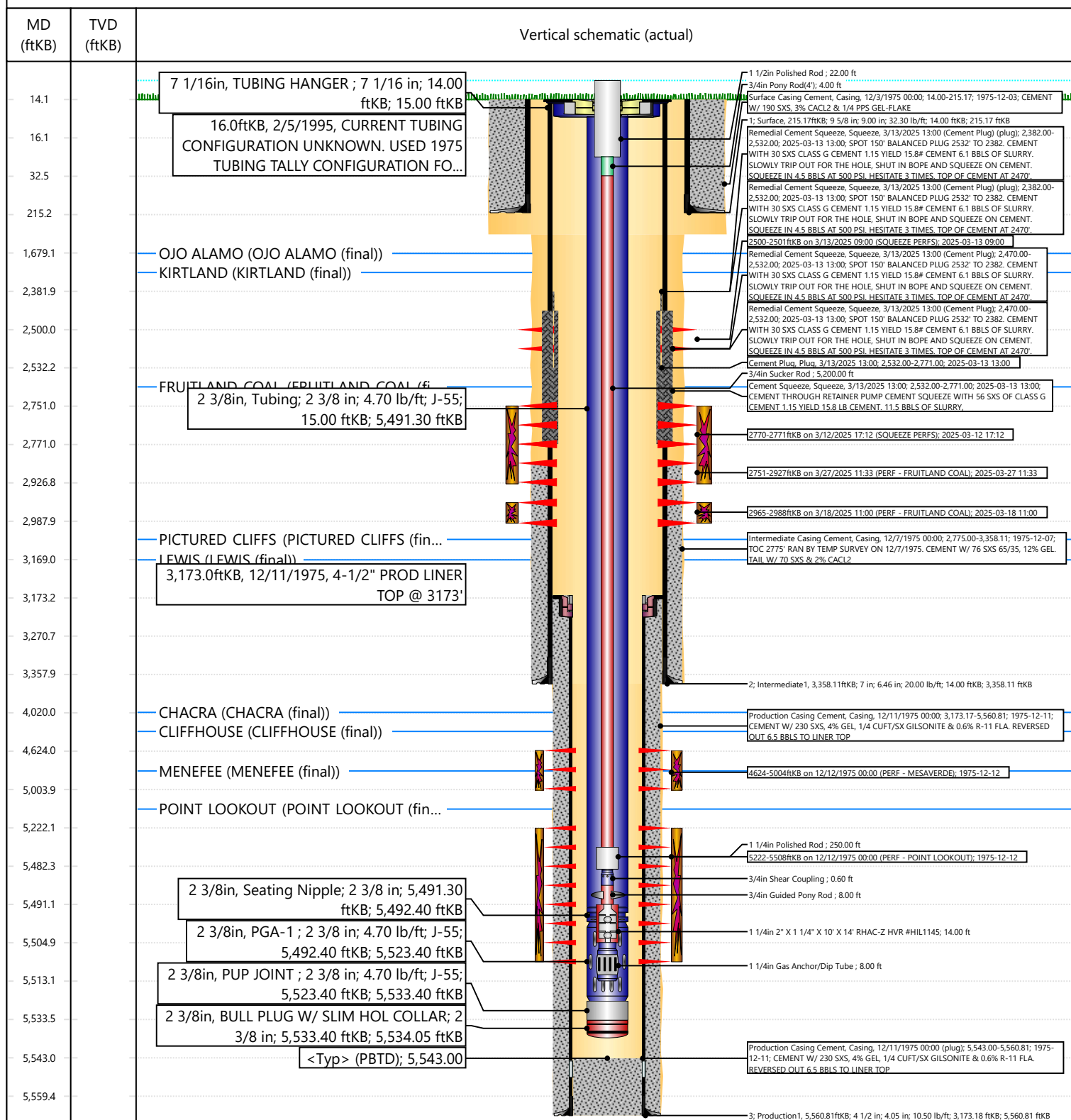


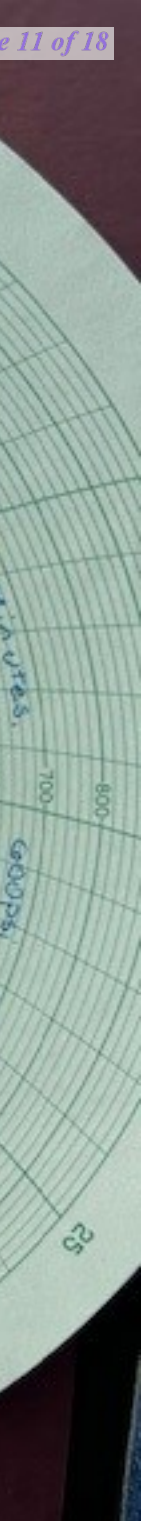
Current Schematic - Version 3

Well Name: PIERCE #2A

API / UWI 3004521815	Surface Legal Location 008-030N-009W-J	Field Name BLANCO MV (PRO #0078)	Route 0410	State/Province NEW MEXICO	Well Configuration Type VERTICAL
Ground Elevation (ft) 6,242.00	Original KB/RT Elevation (ft) 6,256.00	Tubing Hanger Elevation (ft)	RKB to GL (ft) 14.00	KB-Casing Flange Distance (ft)	KB-Tubing Hanger Distance (ft)
Tubing Strings					
Run Date 3/30/2025 16:00	Set Depth (ftKB) 5,534.05	String Max Nominal OD (in) 2 3/8	String Min Nominal ID (in) 2.00	Weight/Length (lb/ft) 4.70	Original Spud Date 12/2/1975 00:00

Original Hole [VERTICAL]







NEW MEXICO ENERGY, MINERALS and NATURAL RESOURCES DEPARTMENT

MECHANICAL INTEGRITY TEST REPORT (TA OR UIC)

Date of Test 3-17-25 Operator Hilcorp Energy API # 30-045-21815
Property Name Pierce Well # 2A Location: Unit I Sec 8 Twn 30N Rge 9W

Land Type:

State _____
Federal _____
Private X _____
Indian _____

Well Type:

Water Injection _____
Salt Water Disposal _____
Gas Injection _____
Producing Oil/Gas X _____
Pressure observation _____

Temporarily Abandoned Well (X) Recomplete TA Expires: _____

Casing Pres. X _____
Bradenhead Pres. X _____
Tubing Pres. NA _____
Int. Casing Pres. X _____

Tbg. SI Pres. _____
Tbg. Inj. Pres. _____

Max. Inj. Pres. _____

Pressured annulus up to 600-580 psi. for 38 mins. Test passed

REMARKS: Pressured up to 600psi - 5min - 600psi - 10min - slight drop to 580psi 15min - 580psi 20min - drop to 580psi 25min - 580psi 30 - 580 35min - Pass test over pressure holding at 580psi -

Perf at 2920-2770'
4 1/2" (CBP @) 4580'
By Joe M. Dooch (Operator Representative)
Witness J. Ke (NMOCD)
1000# spring the check/chart 3/5/25

(Position)

Revised 02-11-02

Oil Conservation Division • 1000 Rio Brazos Road • Aztec, New Mexico 87410
Phone: (505) 334-6178 • Fax (505) 334-6170 • <http://www.conserv.state.nm.us>

Sent on: Monday, March 17, 2025 9:27:28 AM

To: [Amanda Atencio](#); [Christian Zuvich](#)

CC: [John Brown](#); [Brian Bradshaw](#); [Mandi Walker](#); [Shane Smith](#); [Joe McElreath - \(C\)](#); [Juan Cardenas](#)

Subject: RE: [EXTERNAL] RE: Pierce 2A CBL and Request

CAUTION: External sender. DO NOT open links or attachments from UNKNOWN senders.

Good morning, Amanda

30-045-21815

NMOCD approves to continue with recompleat in Fruitland Coal formation through perforations from 2750 to 2988 with an approved MIT which is scheduled for 9 a.m. this morning, March 17, 2025.

In the future, please include api numbers in the subject line.

Thank you

Monica Kuehling
Compliance Officer Supervisor
Deputy Oil and Gas Inspector
New Mexico Oil Conservation Division
North District
Cell Phone: 505-320-0243
Email - monica.kuehling@emnrd.nm.gov

From: Amanda Atencio <Amanda.Atencio@hilcorp.com>

Sent: Monday, March 17, 2025 6:46 AM

To: Kuehling, Monica, EMNRD <monica.kuehling@emnrd.nm.gov>; Christian Zuvich <Christian.Zuvich@hilcorp.com>

Cc: John Brown <jbrown@hilcorp.com>; Brian Bradshaw <Brian.Bradshaw@hilcorp.com>; Mandi Walker <mwalker@hilcorp.com>; Shane Smith <Shane.Smith@hilcorp.com>; Joe McElreath - (C) <jmcelreath@hilcorp.com>; Juan Cardenas <jcardenas@hilcorp.com>

Subject: RE: [EXTERNAL] RE: Pierce 2A CBL and Request

Good morning, Monica

Please see the attached CBL that was run on the Pierce 2A post cement remediation. The CBL shows good cement isolation above and below our zone of interest.

Pending a passing MIT, Hilcorp requests approval to proceed with the recompletion through modified perforation interval: 2,750' – 2,988'. Please let us know if we may proceed.

Thank you,

Amanda Atencio

Operations Engineer – SJE
Hilcorp Energy Company
Office: (346) 237-2160
Cell: (719) 393-2721

Received by OCD: 4/4/2025 8:35:31 AM
 From: Kuehling, Monica, EMNRD <monica.kuehling@emnrd.nm.gov>

Sent: Thursday, March 13, 2025 10:06 AM

To: Christian Zuvich <Christian.Zuvich@hilcorp.com>

Cc: Amanda Atencio <Amanda.Atencio@hilcorp.com>; John Brown <jbrown@hilcorp.com>; Brian Bradshaw <Brian.Bradshaw@hilcorp.com>; Mandi Walker <mwalker@hilcorp.com>; Shane Smith <Shane.Smith@hilcorp.com>; Joe McElreath - (C) <jmcelreath@hilcorp.com>; Juan Cardenas <jcardenas@hilcorp.com>

Subject: RE: [EXTERNAL] RE: Pierce 2A CBL and Request

CAUTION: External sender. DO NOT open links or attachments from UNKNOWN senders.

NMOCD approves below.

Thank you

Monica Kuehling
 Compliance Officer Supervisor
 Deputy Oil and Gas Inspector
 New Mexico Oil Conservation Division
 North District
 Cell Phone: 505-320-0243
 Email - monica.kuehling@emnrd.nm.gov

From: Christian Zuvich <Christian.Zuvich@hilcorp.com>

Sent: Thursday, March 13, 2025 8:26 AM

To: Kuehling, Monica, EMNRD <monica.kuehling@emnrd.nm.gov>

Cc: Amanda Atencio <Amanda.Atencio@hilcorp.com>; John Brown <jbrown@hilcorp.com>; Brian Bradshaw <Brian.Bradshaw@hilcorp.com>; Mandi Walker <mwalker@hilcorp.com>; Shane Smith <Shane.Smith@hilcorp.com>; Joe McElreath - (C) <jmcelreath@hilcorp.com>; Juan Cardenas <jcardenas@hilcorp.com>

Subject: Re: [EXTERNAL] RE: Pierce 2A CBL and Request

Just got verbal approval from Monica to proceed. Thank you.

CZ

From: Christian Zuvich <Christian.Zuvich@hilcorp.com>

Sent: Wednesday, March 12, 2025 6:03 PM

To: Rennick, Kenneth G <krennick@blm.gov>; Kuehling, Monica, EMNRD <monica.kuehling@emnrd.nm.gov>; Kade, Matthew H <mkade@blm.gov>

Cc: Amanda Atencio <Amanda.Atencio@hilcorp.com>; John Brown <jbrown@hilcorp.com>; Brian Bradshaw <Brian.Bradshaw@hilcorp.com>; Mandi Walker <mwalker@hilcorp.com>; Shane Smith <Shane.Smith@hilcorp.com>; Joe McElreath - (C) <jmcelreath@hilcorp.com>; Juan Cardenas <jcardenas@hilcorp.com>

Subject: RE: [EXTERNAL] RE: Pierce 2A CBL and Request

Monica,

We executed our plan. Injection was established; however, we did not see circulation at surface. We would like to perforate higher in the production casing at 2,500' to establish circulation and circulate cement.

Please advise.

Christian Zuvich

Operations Engineer - San Juan East
 Hilcorp Energy Company

M: 832-671-8256

Released to Imaging: 4/25/2025 10:15:36 AM

From: Rennick, Kenneth G <krennick@blm.gov>

Sent: Wednesday, March 12, 2025 2:40 PM

To: Christian Zuvich <Christian.Zuvich@hilcorp.com>; Kuehling, Monica, EMNRD <monica.kuehling@emnrd.nm.gov>; Kade, Matthew H <mkade@blm.gov>

Cc: Amanda Atencio <Amanda.Atencio@hilcorp.com>; John Brown <jbrown@hilcorp.com>; Brian Bradshaw <Brian.Bradshaw@hilcorp.com>; Mandi Walker <mwalker@hilcorp.com>; Shane Smith <Shane.Smith@hilcorp.com>; Joe McElreath - (C) <jmcElreath@hilcorp.com>; Juan Cardenas <jcardenas@hilcorp.com>

Subject: Re: [EXTERNAL] RE: Pierce 2A CBL and Request

CAUTION: External sender. DO NOT open links or attachments from UNKNOWN senders.

Actual Christian, appears the well is non federal minerals. Federal approval is not required for the proposed work.

Kenneth (Kenny) Rennick

Petroleum Engineer

Bureau of Land Management

Farmington Field Office

6251 College Blvd

Farmington, NM 87402

Email: krennick@blm.gov

Mobile & Text: 505.497.0019

From: Christian Zuvich <Christian.Zuvich@hilcorp.com>

Sent: Wednesday, March 12, 2025 1:35 PM

To: Kuehling, Monica, EMNRD <monica.kuehling@emnrd.nm.gov>; Rennick, Kenneth G <krennick@blm.gov>; Kade, Matthew H <mkade@blm.gov>

Cc: Amanda Atencio <Amanda.Atencio@hilcorp.com>; John Brown <jbrown@hilcorp.com>; Brian Bradshaw <Brian.Bradshaw@hilcorp.com>; Mandi Walker <mwalker@hilcorp.com>; Shane Smith <Shane.Smith@hilcorp.com>; Joe McElreath - (C) <jmcElreath@hilcorp.com>; Juan Cardenas <jcardenas@hilcorp.com>

Subject: [EXTERNAL] RE: Pierce 2A CBL and Request

**This email has been received from outside of
DOI - Use caution before clicking on links,
opening attachments, or responding.**

Received verbal approval from both Kenneth and Monica. We will proceed with the plan as outlined below.

Christian Zuvich

Operations Engineer - San Juan East

Hilcorp Energy Company

From: Christian Zuvich
Sent: Wednesday, March 12, 2025 1:49 PM
To: Kuehling, Monica, EMNRD <monica.kuehling@emnrd.nm.gov>; Rennick, Kenneth G <krennick@blm.gov>; mkade@blm.gov
Cc: Amanda Atencio <Amanda.Atencio@hilcorp.com>; John Brown <jbrown@hilcorp.com>; Brian Bradshaw
<Brian.Bradshaw@hilcorp.com>; Mandi Walker <mwalker@hilcorp.com>; Shane Smith <Shane.Smith@hilcorp.com>; Joe McElreath -
(C) <jmcElreath@hilcorp.com>; Juan Cardenas <jcardenas@hilcorp.com>
Subject: Pierce 2A CBL and Request

Attached is the CBL on the Pierce 2A. From the log, we have sufficient cement coverage for the bottom perf interval, but not the top. We are requesting to perforate at 2770' and attempt to establish circulation. If successful, we'll circulate cement to a minimum of 2600'. Perf interval is: 2,750' – 2,988'.

Please advise.

Christian Zuvich
Operations Engineer - San Juan East
Hilcorp Energy Company
M: 832-671-8256

The information contained in this email message is confidential and may be legally privileged and is intended only for the use of the individual or entity named above. If you are not an intended recipient or if you have received this message in error, you are hereby notified that any dissemination, distribution, or copy of this email is strictly prohibited. If you have received this email in error, please immediately notify us by return email or telephone if the sender's phone number is listed above, then promptly and permanently delete this message.

While all reasonable care has been taken to avoid the transmission of viruses, it is the responsibility of the recipient to ensure that the onward transmission, opening, or use of this message and any attachments will not adversely affect its systems or data. No responsibility is accepted by the company in this regard and the recipient should carry out such virus and other checks as it considers appropriate.

Sante Fe Main Office
Phone: (505) 476-3441

General Information
Phone: (505) 629-6116

Online Phone Directory
<https://www.emnrd.nm.gov/ocd/contact-us>

State of New Mexico
Energy, Minerals and Natural Resources
Oil Conservation Division
1220 S. St Francis Dr.
Santa Fe, NM 87505

ACKNOWLEDGMENTS

Action 448690

ACKNOWLEDGMENTS

Operator: HILCORP ENERGY COMPANY 1111 Travis Street Houston, TX 77002	OGRID: 372171
	Action Number: 448690
	Action Type: [C-104] Completion Packet - New Well (C-104NW)

ACKNOWLEDGMENTS

<input checked="" type="checkbox"/>	I hereby certify that the required Water Use Report has been, or will be, submitted for this wells completion.
<input checked="" type="checkbox"/>	I hereby certify that the required FracFocus disclosure has been, or will be, submitted for this wells completion.
<input checked="" type="checkbox"/>	I hereby certify that the rules of the Oil Conservation Division have been complied with and that the information given above is true and complete to the best of my knowledge and belief.

Sante Fe Main Office
Phone: (505) 476-3441

General Information
Phone: (505) 629-6116

Online Phone Directory
<https://www.emnrd.nm.gov/oed/contact-us>

State of New Mexico
Energy, Minerals and Natural Resources
Oil Conservation Division
1220 S. St Francis Dr.
Santa Fe, NM 87505

CONDITIONS

Action 448690

CONDITIONS

Operator: HILCORP ENERGY COMPANY 1111 Travis Street Houston, TX 77002	OGRID: 372171
	Action Number: 448690
	Action Type: [C-104] Completion Packet - New Well (C-104NW)

CONDITIONS

Created By	Condition	Condition Date
plmartinez	None	4/25/2025