

Santa Fe Main Office

Phone: (505) 476-3441 Fax: (55) 476-3462

General Information

Phone: (505) 629-6116

Online Phone Directory Visit:

<https://www.emnrd.nm.gov/ocd/contact-us/>State of New Mexico
Energy, Minerals and Natural ResourcesForm C-103
Revised July 18, 2013OIL CONSERVATION DIVISION
1220 South St. Francis Dr.
Santa Fe, NM 87505

SUNDRY NOTICES AND REPORTS ON WELLS (DO NOT USE THIS FORM FOR PROPOSALS TO DRILL OR TO DEEPEN OR PLUG BACK TO A DIFFERENT RESERVOIR. USE "APPLICATION FOR PERMIT" (FORM C-101) FOR SUCH PROPOSALS.) 1. Type of Well: Oil Well <input type="checkbox"/> Gas Well <input checked="" type="checkbox"/> Other		WELL API NO. 30-015-55142
2. Name of Operator Permian Resources Operating LLC		5. Indicate Type of Lease STATE <input checked="" type="checkbox"/> FEE <input type="checkbox"/>
3. Address of Operator 300 N Marienfeld St, Ste 1000		6. State Oil & Gas Lease No.
4. Well Location Unit Letter <u>F</u> : <u>1401</u> feet from the <u>North</u> line and <u>1699</u> feet from the <u>West</u> line Section <u>4</u> Township <u>22S</u> Range <u>27E</u> NMPM County <u>Eddy</u>		7. Lease Name or Unit Agreement Name BETTY
11. Elevation (Show whether DR, RKB, RT, GR, etc.) 3163		8. Well Number <u>221H</u>
		9. OGRID Number <u>372165</u>
		10. Pool name or Wildcat [98220] PURPLE Sage WOLFCAMP (GAS)

12. Check Appropriate Box to Indicate Nature of Notice, Report or Other Data

NOTICE OF INTENTION TO:

PERFORM REMEDIAL WORK ☐ PLUG AND ABANDON ☐
 TEMPORARILY ABANDON ☐ CHANGE PLANS ☐
 PULL OR ALTER CASING ☐ MULTIPLE COMPL ☐
 DOWNHOLE COMMINGLE ☐
 CLOSED-LOOP SYSTEM ☐
 OTHER: ☐

SUBSEQUENT REPORT OF:

REMEDIAL WORK ☐ ALTERING CASING ☐
 COMMENCE DRILLING OPNS. ☐ P AND A ☐
 CASING/CEMENT JOB ☐
 OTHER: Dedicated Acreage change ☒

13. Describe proposed or completed operations. (Clearly state all pertinent details, and give pertinent dates, including estimated date of starting any proposed work). SEE RULE 19.15.7.14 NMAC. For Multiple Completions: Attach wellbore diagram of proposed completion or recompletion.

Permian Resources Operating LLC respectfully submits the Subsequent sundry to change the dedicated acreage to comply with the pooling Order that was submitted on behalf of our company.

The new dedicated acreage will be for 635.06 acers. Attached is the updated C-102 as well.

Spud Date: 6/25/24

Rig Release Date:

I hereby certify that the information above is true and complete to the best of my knowledge and belief.

SIGNATURE Cassie Evans TITLE Regulatory Specialist DATE 7/26/24

Type or print name Cassie Evans E-mail address: Cassie.Evans@permianres.com PHONE: 432-313-1732

For State Use Only

APPROVED BY: TITLE DATE

Conditions of Approval (if any):

District I
1625 N. French Dr., Hobbs, NM 88240
District II
811 S. First St., Artesia, NM 88210
District III
1000 Rio Brazos Road, Artec, NM 87410
District IV
1220 S. St Francis Dr., NM 87505
Phone: (505) 476-3460 Fax (505) 476-3462

State of New Mexico
Energy, Minerals & Natural Resources Department
OIL CONSERVATION DIVISION
1220 South St. Francis Dr.
Santa Fe, NM 87505

Form C-102

Revised August 1, 2011

Submit one copy to appropriate
District Office

☐ AMENDED REPORT

WELL LOCATION AND ACREAGE DEDICATION PLAT

¹ API Number 30-015-55142	² Pool Code 98220	³ Pool Name Purple Sage; Wolfcamp (Gas)
⁴ Property Code	⁵ Property Name BETTY	⁶ Well Number 221H
⁷ OGRID No. 372165	⁸ Operator Name PERMIAN RESOURCES OPERATING, LLC	⁹ Elevation 3,163'

¹⁰ Surface Location

UL or lot no.	Section	Township	Range	Lot Idn	Feet from the	North/South line	Feet from the	East/West line	County
F	4	22 S	27 E		1,401'	NORTH	1,699'	WEST	EDDY

¹¹ Bottom Hole Location If Different From Surface

UL or lot no.	Section	Township	Range	Lot Idn	Feet from the	North/South line	Feet from the	East/West line	County
LOT 4	6	22 S	27 E		350'	NORTH	100'	WEST	EDDY

¹² Dedicated Acres 635.06	¹³ Joint or Infill	¹⁴ Consolidation Code	¹⁵ Order No.
---	-------------------------------	----------------------------------	-------------------------

No allowable will be assigned to this completion until all interests have been consolidated or a non-standard unit has been approved by the division.

¹⁶ SURFACE HOLE LOCATION

& KICK-OFF POINT
1,401' FNL & 1,699' FWL
ELEV. = 3,163.00'

NAD 83 X = 583,140.06'
NAD 83 Y = 518,456.10'
NAD 83 LAT = 32.425229°
NAD 83 LONG = -104.197852°
NAD 27 X = 541,958.82'
NAD 27 Y = 518,396.11'
NAD 27 LAT = 32.425111°
NAD 27 LONG = -104.197349°

FIRST TAKE POINT &
PENETRATION POINT 1
350' FNL & 100' FEL

NAD 83 X = 581,317.14'
NAD 83 Y = 519,520.45'
NAD 83 LAT = 32.428161°
NAD 83 LONG = -104.203756°
NAD 27 X = 540,135.94'
NAD 27 Y = 519,460.46'
NAD 27 LAT = 32.428043°
NAD 27 LONG = -104.203252°

LAST TAKE POINT &
BOTTOM HOLE LOCATION
350' FNL & 100' FWL

NAD 83 X = 570,982.34'
NAD 83 Y = 519,338.69°
NAD 83 LAT = 32.427692°
NAD 83 LONG = -104.237252°
NAD 27 X = 529,801.23°
NAD 27 Y = 519,278.81°
NAD 27 LAT = 32.427574°
NAD 27 LONG = -104.236748°

CORNER COORDINATES NEW MEXICO EAST - NAD 83
A - CALCULATED CORNER N:519,685.71' E:570,880.76'
B - CALCULATED CORNER N:519,766.44' E:573,482.44'
C - 1/2" IRON ROD N:519,847.17' E:576,084.12'
D - CALCULATED CORNER N:519,859.02' E:578,746.76'
E - IRON PIPE W/ BRASS CAP N:519,870.86' E:581,409.40'
F - 1/2" IRON ROD N:517,282.02' E:581,466.79'
G - IRON PIPE W/ BRASS CAP N:514,624.77' E:581,530.34'
H - CALCULATED CORNER N:514,590.43' E:578,868.47'
I - CALCULATED CORNER N:514,556.09' E:576,206.59'
J - CALCULATED CORNER N:514,539.63' E:573,555.46'
K - CALCULATED CORNER N:514,523.18' E:570,904.33'
L - CALCULATED CORNER N:517,104.44' E:570,892.54'
M - CALCULATED CORNER N:517,201.63' E:576,145.36'

¹⁷ OPERATOR CERTIFICATION

I hereby certify that the information contained herein is true and complete to the best of my knowledge and belief, and that this organization either owns a working interest or unleased mineral interest in the land including the proposed bottom hole location or has a right to drill this well at this location pursuant to a contract with an owner of such a mineral or working interest, or to a voluntary pooling agreement or a compulsory pooling order heretofore entered by the division.

Cassie Evans 5/9/24
Signature Date

Cassie Evans
Printed Name
Cassie.Evans@permianres.com
Email Address

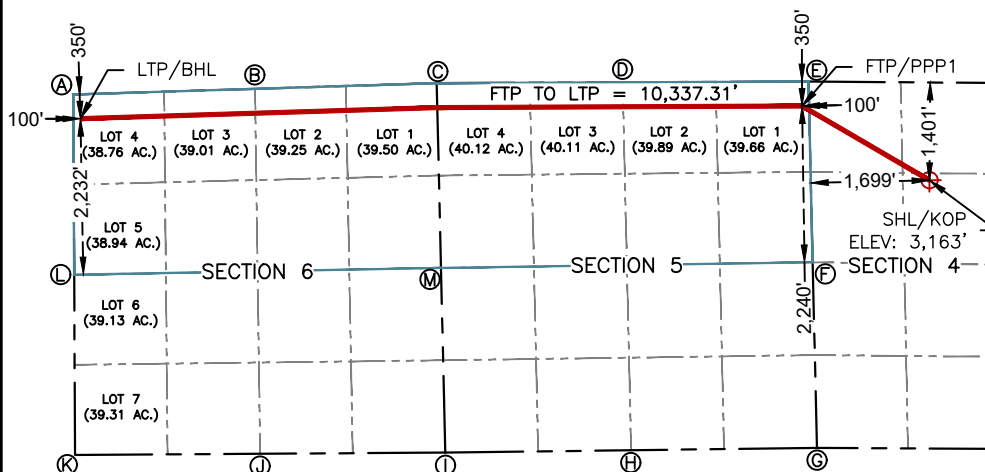
¹⁸ SURVEYOR CERTIFICATION

I hereby certify that the well location shown on this plat was plotted from field notes of actual surveys made by me or under my supervision, and that the same is true and correct to the best of my belief.

Date: 5/7/2024



MARK J. MURRAY P.L.S. NO. 12177



Intent ☐ As Drilled ☐

API #		
Operator Name: PERMIAN RESOURCES OPERATING, LLC	Property Name: BETTY	Well Number 221H

Kick Off Point (KOP)

UL F	Section 4	Township 22 S	Range 27 E	Lot	Feet 1,401'	From N/S N	Feet 1,699'	From E/W W	County EDDY
Latitude 32.425229					Longitude -104.197852			NAD 83	

First Take Point (FTP)

UL L1	Section 5	Township 22 S	Range 27 E	Lot	Feet 350'	From N/S N	Feet 100'	From E/W E	County EDDY
Latitude 32.428161					Longitude -104.203756			NAD 83	

Last Take Point (LTP)

UL L4	Section 6	Township 22 S	Range 27 E	Lot	Feet 350'	From N/S N	Feet 100'	From E/W W	County EDDY
Latitude 32.427692					Longitude -104.237252			NAD 83	

Is this well the defining well for the Horizontal Spacing Unit?

☐ No

Is this well an infill well?

☐ Yes

If infill is yes please provide API if available, Operator Name and well number for Defining well for Horizontal Spacing Unit.

API # 30-015-49105		
Operator Name: Permian Resource Operating LLC	Property Name: Betty	Well Number 402

KZ 06/29/2018

Sante Fe Main Office
Phone: (505) 476-3441

General Information
Phone: (505) 629-6116

Online Phone Directory
<https://www.emnrd.nm.gov/ocd/contact-us>

State of New Mexico
Energy, Minerals and Natural Resources
Oil Conservation Division
1220 S. St Francis Dr.
Santa Fe, NM 87505

CONDITIONS

Action 370240

CONDITIONS

Operator: Permian Resources Operating, LLC 300 N. Marienfeld St Ste 1000 Midland, TX 79701	OGRID: 372165
	Action Number: 370240
	Action Type: [C-103] NOI Change of Plans (C-103A)

CONDITIONS

Created By	Condition	Condition Date
ward.rikala	Any previous COA's not addressed within the updated COA's still apply.	4/28/2025