

State of New Mexico
Energy, Minerals and Natural Resources

Form **Page 1 of 8**
Revised July 18, 2013

Office
District I – (575) 393-6161
1625 N. French Dr., Hobbs, NM 88240
District II – (575) 748-1283
811 S. First St., Artesia, NM 88210
District III – (505) 334-6178
1000 Rio Brazos Rd., Aztec, NM 87410
District IV – (505) 476-3460
1220 S. St. Francis Dr., Santa Fe, NM
87505

OIL CONSERVATION DIVISION
1220 South St. Francis Dr.
Santa Fe, NM 87505

WELL API NO.
30-015-27592

5. Indicate Type of Lease
STATE ☐ FEE ☒

6. State Oil & Gas Lease No.
B-2071-28

7. Lease Name or Unit Agreement Name

Mewbourne WDW-1

8. Well Number: WDW-1

9. OGRID Number: 15694 / 255554

10. Pool name or Wildcat
96918 Navajo Permo-Penn

SUNDRY NOTICES AND REPORTS ON WELLS

(DO NOT USE THIS FORM FOR PROPOSALS TO DRILL OR TO DEEPEN OR PLUG BACK TO A DIFFERENT RESERVOIR. USE "APPLICATION FOR PERMIT" (FORM C-101) FOR SUCH PROPOSALS.)

1. Type of Well: Oil Well ☐ Gas Well ☒ Other: INJECTION WELL

2. Name of Operator
HF SINCLAIR NAVAJO REFINING LLC

3. Address of Operator
501 E Main St., Artesia, NM 88210

4. Well Location

Unit Letter: O ; 659 feet from the South line and 2,377 feet from the East line

Section 31 Township 17S Range 28E NMPM County: EDDY

11. Elevation (Show whether DR, RKB, RT, GR, etc.)
3,603.3' GL

12. Check Appropriate Box to Indicate Nature of Notice, Report or Other Data

NOTICE OF INTENTION TO:

PERFORM REMEDIAL WORK ☒ PLUG AND ABANDON ☐
TEMPORARILY ABANDON ☐ CHANGE PLANS ☐
PULL OR ALTER CASING ☐ MULTIPLE COMPL ☐
DOWNHOLE COMMINGLE ☐
CLOSED-LOOP SYSTEM ☐
OTHER: BULLHEAD STIMULATION ☒

SUBSEQUENT REPORT OF:

REMEDIAL WORK ☐ ALTERING CASING ☐
COMMENCE DRILLING OPNS. ☐ P AND A ☐
CASING/CEMENT JOB ☐
OTHER: ☐

13. Describe proposed or completed operations. (Clearly state all pertinent details, and give pertinent dates, including estimated date of starting any proposed work). SEE RULE 19.15.7.14 NMAC. For Multiple Completions: Attach wellbore diagram of proposed completion or recompletion.

HF Sinclair Navajo Refinery is planning to conduct a bullhead acid stimulation on WDW-1 to increase injectivity in the permitted injection zone.

The bullhead acid stimulation will consist of pumping approximately 500 bbls of acid blend containing 15% HCl, 20% xylene, 100 gpt 50% citric acid, 12 gpt AcidLink 701A, 2 gpt PlexHib 166, 2 gpt PlexBreak 145. The acid blend will be displaced from the tubing with approximately 125 bbls of fresh water or injectate. The well will either soak for a period of time or immediately resume injection.

NOTE: Work is expected to be performed during September 2025, pending contractor availability.

Spud Date:

Rig Release Date:

I hereby certify that the information above is true and complete to the best of my knowledge and belief.

SIGNATURE



TITLE Environmental Manager

DATE

8-27-25

Type or print name Case Hinkins E-mail address: case.hinkins@hfsinclair.com PHONE: 575-746-5399

For State Use Only

APPROVED BY:

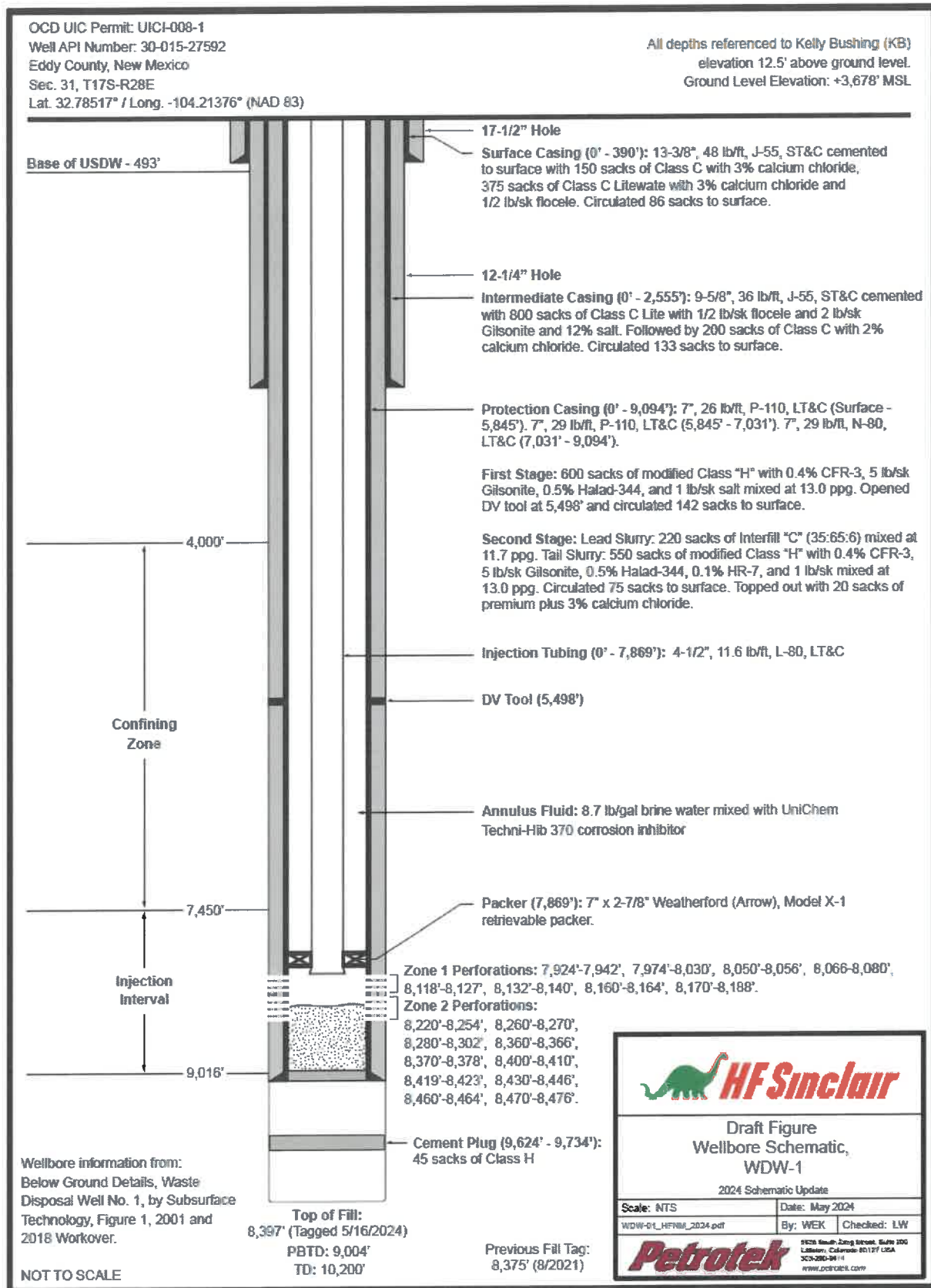
TITLE

DATE

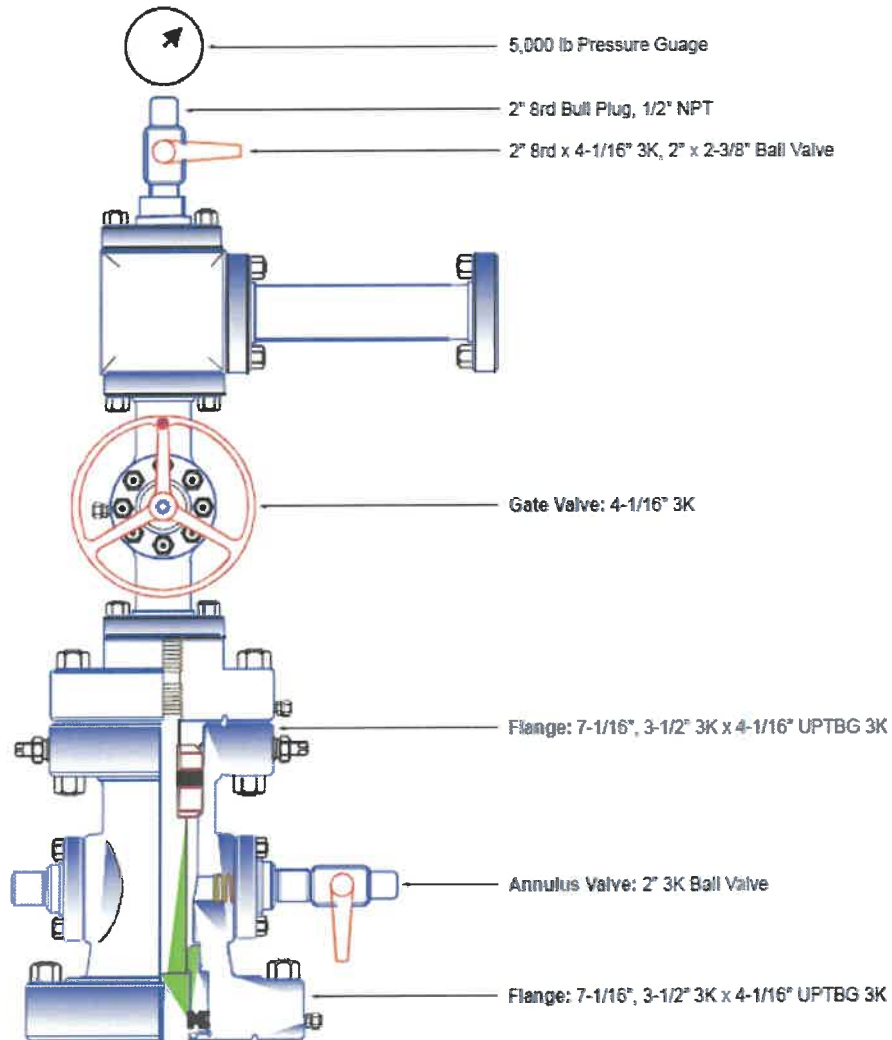
Conditions of Approval (if any):

2025 HF Sinclair Navajo Refining WDW-1 Bullhead Acid Stimulation Job Procedures		
Step No.	~ Time	Description
1	0700	Arrive at WDW-1 location, Safe Work Permit with HFSNR Check with HFSNR to make sure well has been shut-in & line disconnected/locked out Conduct JHA with HFSNR, CUDD, Petrotek, Pressure Services LLC
2	0800	Make sure personnel operating acid equip have proper PPE (apron, rubber gloves, respirator and face shield)
	0900	Manifold 4 CUDD transports of acid blend containing 15% HCl, 20% xylene, 100 gpt 50% citric acid, 12 gpt AcidLink 701A, 2 gpt PlexHib 166, 2 gpt PlexBreak 145
3	1000	Rig up pump truck on WDW-1, pressure test 1502 iron to 2,000 psi with fresh water from Pressure Services LLC; MASIP: 1,585 psi with site waste; well is currently operating at ~ 55 gpm / 1,350 psi whp; anticipating max treatment rate of ~ 80 - 120 gpm (~2.0 - 3.0 bpm)
	1400	Pump ~20,000 gal 15% HCl plus additives; displace suction lines back to transports and 1502 iron with freshwater; rig down 1502 iron, displace tubing with 125 bbls of fresh water or HFSNR injectate, shut in and soak for 1 hour
	1500	Resume injection of HFSNR injectate
		Maintain steady injection for at least 24 hours, HFSNR to provide Petrotek hourly injection data 1 week before and 1 week after stimulation

Note: All vendors/contractors will have completed necessary HFSNR Contractor Onboarding Requirements prior to arriving on location



OCD UIC Permit: UICI-088-1
 Well API Number: 30-015-27592
 Eddy County, New Mexico
 Sec. 31, T17S-R28E
 Lat. 32.78517° / Long. -104.21376° (NAD 83)



Well Head information partially
 from: Figure 5, Mewbourne Well
 No. 1 Wellhead Schematic by
 Superior Wellhead.

NOT TO SCALE




Figure 2
 WDW No. 1,
 Wellhead Schematic

2024 FOT/MT Report

Scale: NTS	Date: June 2024
Fig. 02_WF_Artists_2024_WDWL_01.pdf	By: WEK Checked: LW

Petrotek

24931 South Zang Street, Suite 200
 Lubbock, Colorado 80121 USA
 303-280-9414
www.petrotek.com

Petrotek

Page 4 of 4

2025_08_26_WDW-1_BH_Stim_Prog.xlsx

Casing Information														
Depth	Size [in.]	Weight	Material	Grade	Connection	Burst	70% Burst	Collapse	ID [in.]	Drift	BBL/ft	cu ft/ft	Coupling OD [in.]	Casing Vol [bbls]
9,094	7	26	CS	P-110	LTC	9,960	6,972	6,210	6.276	6.151	0.0383	0.2148	7.875	348
Injection Tubing														
Depth	Size [in.]	Weight	Material	Grade	Connection	Burst	70% Burst	Collapse	ID [in.]	Drift	BBL/ft	cu ft/ft	Coupling OD [in.]	Casing Vol [bbls]
7,869	4 1/2	11.6	CS	L-80	LTC	10,480	7,336	6,350	4	2.867	0.0155	0.0873	5	122
													Volume to top perf:	124.4

Zone 1 Perforations:

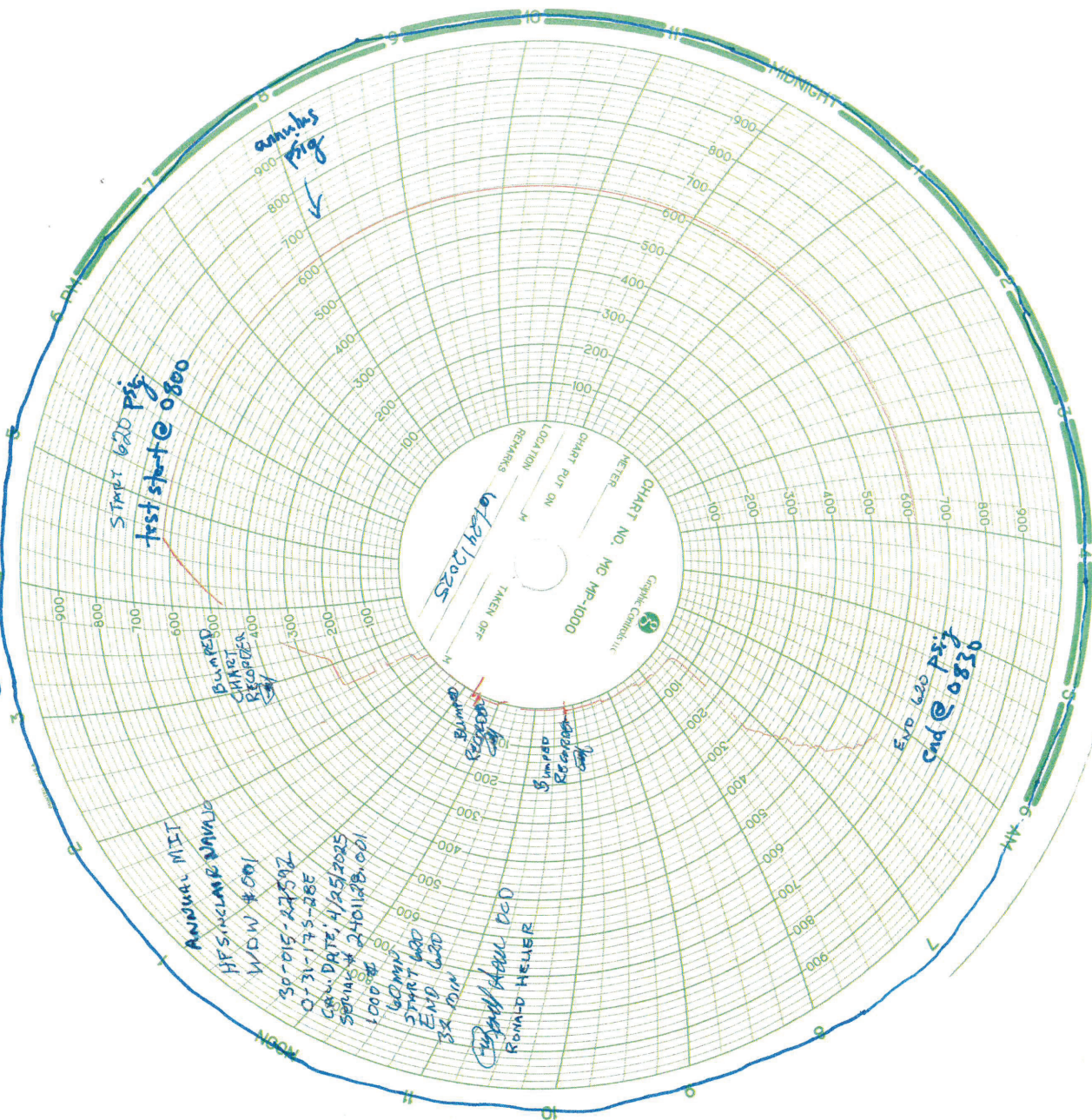
7,924' - 7,942' | 7,974' - 8,030' | 8,050' - 8,056' | 8,066 - 8,080';
8,118' - 8,127' | 8,132' - 8,140' | 8,160' - 8,164' | 8,170' - 8,188'

Zone 2 Perforations:

8,220' - 8,254' | 8,260' - 8,270' | 8,280' - 8,302' | 8,360' - 8,366'
8,370' - 8,378' | 8,400' - 8,410' | 8,419' - 8,423' | 8,430' - 8,446'
8,460' - 8,464' | 8,470' - 8,476'

WDW - 1

1 hr chart



Sante Fe Main Office
Phone: (505) 476-3441

General Information
Phone: (505) 629-6116

Online Phone Directory
<https://www.emnrd.nm.gov/oed/contact-us>

State of New Mexico
Energy, Minerals and Natural Resources
Oil Conservation Division
1220 S. St Francis Dr.
Santa Fe, NM 87505

COMMENTS

Action 499720

COMMENTS

Operator: HF Sinclair Navajo Refining LLC ATTN: GENERAL COUNSEL Dallas, TX 75201	OGRID: 15694
	Action Number: 499720
	Action Type: [C-103] Sub. Workover (C-103R)

COMMENTS

Created By	Comment	Comment Date
cchavez	WDW-1 C-103R Bulkhead Well Stimulation	8/27/2025

Sante Fe Main Office
Phone: (505) 476-3441

General Information
Phone: (505) 629-6116

Online Phone Directory
<https://www.emnrd.nm.gov/ocd/contact-us>

State of New Mexico
Energy, Minerals and Natural Resources
Oil Conservation Division
1220 S. St Francis Dr.
Santa Fe, NM 87505

CONDITIONS

Action 499720

CONDITIONS

Operator: HF Sinclair Navajo Refining LLC ATTN: GENERAL COUNSEL Dallas, TX 75201	OGRID: 15694
	Action Number: 499720
	Action Type: [C-103] Sub. Workover (C-103R)

CONDITIONS

Created By	Condition	Condition Date
cchavez	None	8/27/2025