

Well Name: GISSLER B	Well Location: T17S / R30E / SEC 14 / SENW / 32.8357259 / -103.9439273	County or Parish/State: EDDY / NM
Well Number: 33	Type of Well: OIL WELL	Allottee or Tribe Name:
Lease Number: NMNM074939	Unit or CA Name:	Unit or CA Number:
US Well Number: 3001533125	Operator: BURNETT OIL COMPANY INCORPORATED	

Notice of Intent

Sundry ID: 2869091

Type of Submission: Notice of Intent	Type of Action: Plug Back
Date Sundry Submitted: 08/27/2025	Time Sundry Submitted: 09:39
Date proposed operation will begin: 09/15/2025	

**Procedure Description:** Burnett is requesting expedited approval to plug back and recompleate this well. Anticipated well work to take 3-4 days. Well is anticipated to be frac'd on October 13-14, 2025. Proposed procedures and WBD are attached.

Surface Disturbance

Is any additional surface disturbance proposed?: No

NOI Attachments

Procedure Description

2025.8.7\_Gissler\_B\_\_33\_San\_Andres\_Completion\_Procedure\_20250827085108.pdf

Well Name: GISSLER B

Well Location: T17S / R30E / SEC 14 /  
SENW / 32.8357259 / -103.9439273

County or Parish/State: EDDY /  
NM

Well Number: 33

Type of Well: OIL WELL

Allottee or Tribe Name:

Lease Number: NMNM074939

Unit or CA Name:

Unit or CA Number:

US Well Number: 3001533125

Operator: BURNETT OIL COMPANY  
INCORPORATED

Conditions of Approval

Specialist Review

GISSLER\_B\_33\_\_\_2869091\_\_\_Procedure\_with\_COA\_20250905192527.pdf

Operator

I certify that the foregoing is true and correct. Title 18 U.S.C. Section 1001 and Title 43 U.S.C. Section 1212, make it a crime for any person knowingly and willfully to make to any department or agency of the United States any false, fictitious or fraudulent statements or representations as to any matter within its jurisdiction. Electronic submission of Sundry Notices through this system satisfies regulations requiring a

Operator Electronic Signature: RANDY BOLLES

Signed on: AUG 27, 2025 09:37 AM

Name: BURNETT OIL COMPANY INCORPORATED

Title: Contractor

Street Address: 5008 HIGHGARDEN AVE

City: ARCADIAState: OK

Phone: (405) 738-0183

Email address: RBOLLES@COX.NET

Field

Representative Name:

Street Address:

City:State:Zip:

Phone:

Email address: x

BLM Point of Contact

BLM POC Name: KEITH P IMMATTY

BLM POC Title: ENGINEER

BLM POC Phone: 5759884722

BLM POC Email Address: KIMMATTY@BLM.GOV

Disposition: Approved

Disposition Date: 09/05/2025

Signature: Keith Immatty

Form 3160-5 (June 2019)	UNITED STATES DEPARTMENT OF THE INTERIOR BUREAU OF LAND MANAGEMENT	FORM APPROVED OMB No. 1004-0137 Expires: October 31, 2021
<b>SUNDRY NOTICES AND REPORTS ON WELLS</b> <i>Do not use this form for proposals to drill or to re-enter an abandoned well. Use Form 3160-3 (APD) for such proposals.</i>		5. Lease Serial No.
		6. If Indian, Allottee or Tribe Name

<b>SUBMIT IN TRIPLICATE - Other instructions on page 2</b>		7. If Unit of CA/Agreement, Name and/or No.
1. Type of Well <input type="checkbox"/> Oil Well <input type="checkbox"/> Gas Well <input type="checkbox"/> Other		8. Well Name and No.
2. Name of Operator		9. API Well No.
3a. Address	3b. Phone No. (include area code)	10. Field and Pool or Exploratory Area
4. Location of Well (Footage, Sec., T.,R.,M., or Survey Description)		11. Country or Parish, State

12. CHECK THE APPROPRIATE BOX(ES) TO INDICATE NATURE OF NOTICE, REPORT OR OTHER DATA				
TYPE OF SUBMISSION	TYPE OF ACTION			
<input type="checkbox"/> Notice of Intent	<input type="checkbox"/> Acidize	<input type="checkbox"/> Deepen	<input type="checkbox"/> Production (Start/Resume)	<input type="checkbox"/> Water Shut-Off
<input type="checkbox"/> Subsequent Report	<input type="checkbox"/> Alter Casing	<input type="checkbox"/> Hydraulic Fracturing	<input type="checkbox"/> Reclamation	<input type="checkbox"/> Well Integrity
<input type="checkbox"/> Final Abandonment Notice	<input type="checkbox"/> Casing Repair	<input type="checkbox"/> New Construction	<input type="checkbox"/> Recomplete	<input type="checkbox"/> Other
	<input type="checkbox"/> Change Plans	<input type="checkbox"/> Plug and Abandon	<input type="checkbox"/> Temporarily Abandon	
	<input type="checkbox"/> Convert to Injection	<input type="checkbox"/> Plug Back	<input type="checkbox"/> Water Disposal	

13. Describe Proposed or Completed Operation: Clearly state all pertinent details, including estimated starting date of any proposed work and approximate duration thereof. If the proposal is to deepen directionally or recompleate horizontally, give subsurface locations and measured and true vertical depths of all pertinent markers and zones. Attach the Bond under which the work will be perfonned or provide the Bond No. on file with BLM/BIA. Required subsequent reports must be filed within 30 days following completion of the involved operations. If the operation results in a multiple completion or recompletion in a new interval, a Form 3160-4 must be filed once testing has been completed. Final Abandonment Notices must be filed only after all requirements, including reclamation, have been completed and the operator has detennined that the site is ready for final inspection.)

14. I hereby certify that the foregoing is true and correct. Name (Printed/Typed)		
	Title	
Signature	Date	

<b>THE SPACE FOR FEDERAL OR STATE OFFICE USE</b>		
Approved by	Title	Date
Conditions of approval, if any, are attached. Approval of this notice does not warrant or certify that the applicant holds legal or equitable title to those rights in the subject lease which would entitle the applicant to conduct operations thereon.	Office	

Title 18 U.S.C Section 1001 and Title 43 U.S.C Section 1212, make it a crime for any person knowingly and willfully to make to any department or agency of the United States any false, fictitious or fraudulent statements or representations as to any matter within its jurisdiction.

(Instructions on page 2)

## GENERAL INSTRUCTIONS

This form is designed for submitting proposals to perform certain well operations and reports of such operations when completed as indicated on Federal and Indian lands pursuant to applicable Federal law and regulations. Any necessary special instructions concerning the use of this form and the number of copies to be submitted, particularly with regard to local area or regional procedures and practices, are either shown below, will be issued by or may be obtained from the local Federal office.

## SPECIFIC INSTRUCTIONS

*Item 4* - Locations on Federal or Indian land should be described in accordance with Federal requirements. Consult the local Federal office for specific instructions.

*Item 13*: Proposals to abandon a well and subsequent reports of abandonment should include such special information as is required by the local Federal office. In addition, such proposals and reports should include reasons for the abandonment; data on any former or present productive zones or other zones with present significant fluid contents not sealed off by cement or otherwise; depths (top and bottom) and method of placement of cement plugs; mud or other material placed below, between and above plugs; amount, size, method of parting of any casing, liner or tubing pulled and the depth to the top of any tubing left in the hole; method of closing top of well and date well site conditioned for final inspection looking for approval of the abandonment. If the proposal will involve **hydraulic fracturing operations**, you must comply with 43 CFR 3162.3-3, including providing information about the protection of usable water. Operators should provide the best available information about all formations containing water and their depths. This information could include data and interpretation of resistivity logs run on nearby wells. Information may also be obtained from state or tribal regulatory agencies and from local BLM offices.

## NOTICES

The privacy Act of 1974 and the regulation in 43 CFR 2.48(d) provide that you be furnished the following information in connection with information required by this application.

AUTHORITY: 30 U.S.C. 181 et seq., 351 et seq., 25 U.S.C. 396; 43 CFR 3160.

PRINCIPAL PURPOSE: The information is used to: (1) Evaluate, when appropriate, approve applications, and report completion of subsequent well operations, on a Federal or Indian lease; and (2) document for administrative use, information for the management, disposal and use of National Resource lands and resources, such as: (a) evaluating the equipment and procedures to be used during a proposed subsequent well operation and reviewing the completed well operations for compliance with the approved plan; (b) requesting and granting approval to perform those actions covered by 43 CFR 3162.3-2, 3162.3-3, and 3162.3-4; (c) reporting the beginning or resumption of production, as required by 43 CFR 3162.4-1(c) and (d) analyzing future applications to drill or modify operations in light of data obtained and methods used.

ROUTINE USES: Information from the record and/or the record will be transferred to appropriate Federal, State, local or foreign agencies, when relevant to civil, criminal or regulatory investigations or prosecutions in connection with congressional inquiries or to consumer reporting agencies to facilitate collection of debts owed the Government.

EFFECT OF NOT PROVIDING THE INFORMATION: Filing of this notice and report and disclosure of the information is mandatory for those subsequent well operations specified in 43 CFR 3162.3-2, 3162.3-3, 3162.3-4.

The Paperwork Reduction Act of 1995 requires us to inform you that:

The BLM collects this information to evaluate proposed and/or completed subsequent well operations on Federal or Indian oil and gas leases.

Response to this request is mandatory.

The BLM would like you to know that you do not have to respond to this or any other Federal agency-sponsored information collection unless it displays a currently valid OMB control number.

**BURDEN HOURS STATEMENT:** Public reporting burden for this form is estimated to average 8 hours per response, including the time for reviewing instructions, gathering and maintaining data, and completing and reviewing the form. Direct comments regarding the burden estimate or any other aspect of this form to U.S. Department of the Interior, Bureau of Land Management (1004-0137), Bureau Information Collection Clearance Officer (WO-630), 1849 C St., N.W., Mail Stop 401 LS, Washington, D.C. 20240

## Additional Information

### Location of Well

0. SHL: SENW / 2195 FNL / 2215 FWL / TWSP: 17S / RANGE: 30E / SECTION: 14 / LAT: 32.8357259 / LONG: -103.9439273 ( TVD: 0 feet, MD: 0 feet )

PPP: SENW / 2195 FNL / 2215 FWL / TWSP: 17S / RANGE: 30E / SECTION: 14 / LAT: 0.0 / LONG: 0.0 ( TVD: 0 feet, MD: 0 feet )

BHL: SENW / 2195 FNL / 2215 FWL / TWSP: 17S / RANGE: 30E / SECTION: 14 / LAT: 0.0 / LONG: 0.0 ( TVD: 0 feet, MD: 0 feet )

**Burnett Oil Co., Inc.**  
**Gissler B #33**  
**Cedar Lake Yeso**  
**Eddy Co., NM**

API: 30-015-33125

Elevation: 3,695' GL, 3,707' KB

**Casing:** 9-5/8" 32.3#/ft, Set @ 497'  
7" 23# K-55 @ 5,100'  
DV @ 2,600'  
5-1/2" 15.5# J-55 @ 6,150'

**TOP OF LINER @ 4,100'**

**Existing Open Perfs: 5,115-5,881'**

#### **4 Stage Grayburg & San Andres Completion Procedure:**

## STAGE #1 Lower Lower San Andres

- 1) MIRU pulling unit
- 2) POOH Standing back rods /Tbg. LD pump & production BHA.
- 3) RIH to +/- 4,460' on 2-7/8" tbg w/ 4-7/8" Bit/scraper. POOH standing back, RIH to +/- 4,085' with 6-1/4" Bit/Scraper. POOH Standing back & LD Bit/scraper.
- 4) MIRU WL. RIH & set 5-1/2" CIBP @ +/- 4,450'. Dump bail 35' cmt on top of CIBP, verify Top of cmt.
- 5) Test casing to +/- 2,000# surface pressure for 15 minutes.
  - i. If it does not test, we may run packer to isolate, identify leak to sqz and retest.
- 6) Perf (3,899-4,200') w/ 3-1/8" guns, Dyna Frac Tune GH Charge type, RDX explosive type, 22.7g explosive weight, 0.42 EHD, "even hole size", holes per logs as indicated below.
- 7) Dump Bail Acid as needed to establish Injection rate into Interval.
- 8) MIRU CUDD & Frac Equipment. Frac down casing per design.
- 9) Over displace Flush by 150 bbls after 1# read on in-line.

## STAGE #2 Upper Lower San Andres

- 10) During flush on stage #1, pump 2,000 gallons 15% acid (at less than 40 BPM) and displace to area of next perforation.

**Gissler B #33**

- 11) TIH set wireline set composite bridge plug between top perf of the Lower Lower San Andres which is at 3,899' and below the bottom perf of the Upper Lower San Andres which is at 3,843', TOOH.
- 12) After RBP is set, test csg to 2000# surface pressure for 15 minutes.
- 13) TIH with wire line and Perforate the Upper Lower San Andres Formation (3,545-3,843') w/ 3-1/8" guns, Dyna Frac Tune GH Charge type, RDX explosive type, 22.7g explosive weight, 0.42 EHD, "even hole size", holes per logs as indicated below.
- 14) Begin pumping ASAP.
- 15) Pump stage as designed.
- 16) Over displace Flush by 150 bbls after 1# read on in-line.

**STAGE #3 Upper San Andres**

- 17) During flush on stage #2, pump 2,000 gallons 15% acid (at less than 40 BPM) and displace to area of next perforation.
- 18) TIH set wireline set composite bridge plug between top perf of the Upper Lower San Andres which is at 3,545' and below the bottom perf of the Upper San Andres which is at 3,368', TOOH.
- 19) After RBP is set, test csg to 2000# surface pressure for 15 minutes.
- 20) TIH with wire line and Perforate the Upper San Andres Formation (3,098-3,368') w/ 3-1/8" guns, Dyna Frac Tune GH Charge type, RDX explosive type, 22.7g explosive weight, 0.42 EHD, "even hole size", holes per logs as indicated below.
- 21) Begin pumping ASAP.
- 22) Pump stage as designed.
- 23) Over displace Flush by 150 bbls after 1# read on in-line.

**STAGE #4 Grayburg**

- 24) During flush on stage #3, pump 2,000 gallons 15% acid (at less than 40 BPM) and displace to area of next perforation.
- 25) TIH set wireline set composite bridge plug between top perf of the Upper San Andres which is at 3,098' and below the bottom perf of the Grayburg which is at 2,930', TOOH.
- 26) After RBP is set, test csg to 2000# surface pressure for 15 minutes.
- 27) TIH with wire line and Perforate the Grayburg Formation (2,614-2,930') w/ 3-1/8" guns, Dyna Frac Tune GH Charge type, RDX explosive type, 22.7g explosive weight, 0.42 EHD, "even hole size", holes per logs as indicated below.
- 28) RDMO WL.
- 29) Begin pumping ASAP.
- 30) Pump stage as designed.
- 31) Over displace Flush by 150 bbls after 1# read on in-line.

**Gissler B #33**

- 32) RDMO CUDD and frac equipment.
- 33) Upon completion of the Grayburg/San Andres, wait at least 12 hours before getting back on the well to let resin coated sand set up.
- 34) RU drilling BHA w/bit. Setup surface equipment. Drill out CBP's & circ hole clean. POOH LD BHA/Bit. Rls surface drilling support equipment.
- 35) RIH w/ (Btm to top) BP, Perf Subs, Gas Separator, 5-1/2" CamLock TAC, PC Pump Stator, 2-7/8" tbg to 5-1/2" Stabilizer, then 2-7/8" J-55 Tbg to surf.
- a. Rods (Btm to top) PC Pump Rotor, Guided 1" D90 Rods, bare 1" D90 Rods to surf.
- 36) RDMO PU & Kill Truck, Return Well to Production

**PC PUMP:** Blake Parrish 432.209.2548 Petro Lift Solutions

To supply pump, tbg hanger, tbg anchor, crossovers, tubing subs, polished rod, rod clamp, wedge meter, rod lock, pressure transducers as needed.

**DESIGN / FLUID CRITERIA/ ADDITIVES (PER STAGE)**

- |  |                                       |
|--|---------------------------------------|
| • Design Pump rate - 65 bpm.                     | Friction Reducer- provided by Supreme |
| • Maximum Pump rate - 70 bpm.                    | Biocide - provided by Supreme         |
| • Maximum treating pressure - 3,700 psi.         | Scale Inhibitor - provided by Supreme |
| • HHP required 5,895 HHP.                        | FR Breaker- provided by Supreme       |
| • Fluid – Produced Water                         | Surfactant- provided by Supreme       |
| • Based on pumping down 7" 23# J-55 & 5.5" 15.5# | DIESEL - Supplied by BOCI             |
| • Shower trailer - Supplied by BOCI              | BOCI supplies Iron Restraints         |
| • All Sand & Storage Supplied by CUDD            |                                       |

**Additive Pump Rates (PER STAGE)**

Scale Inhibitor Supreme SI-210 pumped at .5 gal per 1,000 gals.

FR Supreme XB-2 pumped at 1 gal per 1,000 gals.

Surfactant Supreme ST-FLB pumped at .5 gal per 1,000 gals.

Biocide Supreme QD10 pumped at .25 gal per 1,000 gals.

FR Breaker Supreme Slick Break pumped at .5 gal per 1,000 gals.

IF Produced water is used instead of Fresh Water.

Produced Water Treatment supplied by Supreme. WT-34 pumped at .25 gal per 1,000 gals.

Aiming for an Oxidated Rate Potential (ORP) to be 200-400

**ADDITIONAL EQUIPMENT: (PER STAGE)**

- 2 in-line densiometer(s).
- Sand sieves, and associated equipment to perform QC on location. Sand sieves on all compartments and water analysis on pit water.
- Pressure relief valve on the casing and kickouts or popoff required on downhole pumps.



## Gissler B #33

Gissler A #22 STAGE #1 Lower Lower San Andres Interval <b>7" &amp; 5-1/2" TOL @ 4,096'</b>									
3,899	3,907	3,913	3,924	3,935	3,942	3,950	3,966	3,980	3,994
3,999	4,008	4,015	4,022	4,030	4,039	4,080	4,085	4,090	4,105
4,114	4,161	4,169	4,182	4,191	4,200				
Interval	26 Depths	26 @ 1 SPF		1 SPF @ 0.42" holes at 90* phasing					
301'	26 Shots								

Gissler A #22 STAGE #2 Upper Lower San Andres Interval									
3,545	3,550	3,555	3,563	3,577	3,591	3,600	3,610	3,616	3,628
3,632	3,645	3,660	3,665	3,679	3,693	3,707	3,721	3,732	3,740
3,752	3,766	3,780	3,808	3,816	3,823	3,836	3,843		
Interval	28 Depths	28 @ 1 SPF		1 SPF @ 0.42" holes at 90* phasing					
298'	28 Shots								

Gissler A #22 STAGE #3 Upper San Andres Interval									
3,098	3,101	3,105	3,134	3,136	3,189	3,192	3,195	3,197	3,202
3,206	3,210	3,336	3,339	3,342	3,344	3,346	3,348	3,350	3,360
3,363	3,366	3,368							
Interval	23 Depths	23 @ 1 SPF		1 SPF @ 0.42" holes at 90* phasing					
270'	23 Shots								

Gissler A #22 STAGE #4 Grayburg Interval									
2,614	2,619	2,660	2,663	2,667	2,684	2,689	2,694	2,699	2,741
2,746	2,752	2,800	2,808	2,812	2,816	2,840	2,842	2,886	2,890
2,893	2,922	2,926	2,930						
Interval	24 Depths	24 @ 1 SPF		1 SPF @ 0.42" holes at 90* phasing					
316'	24 Shots								

## Gissler B #33

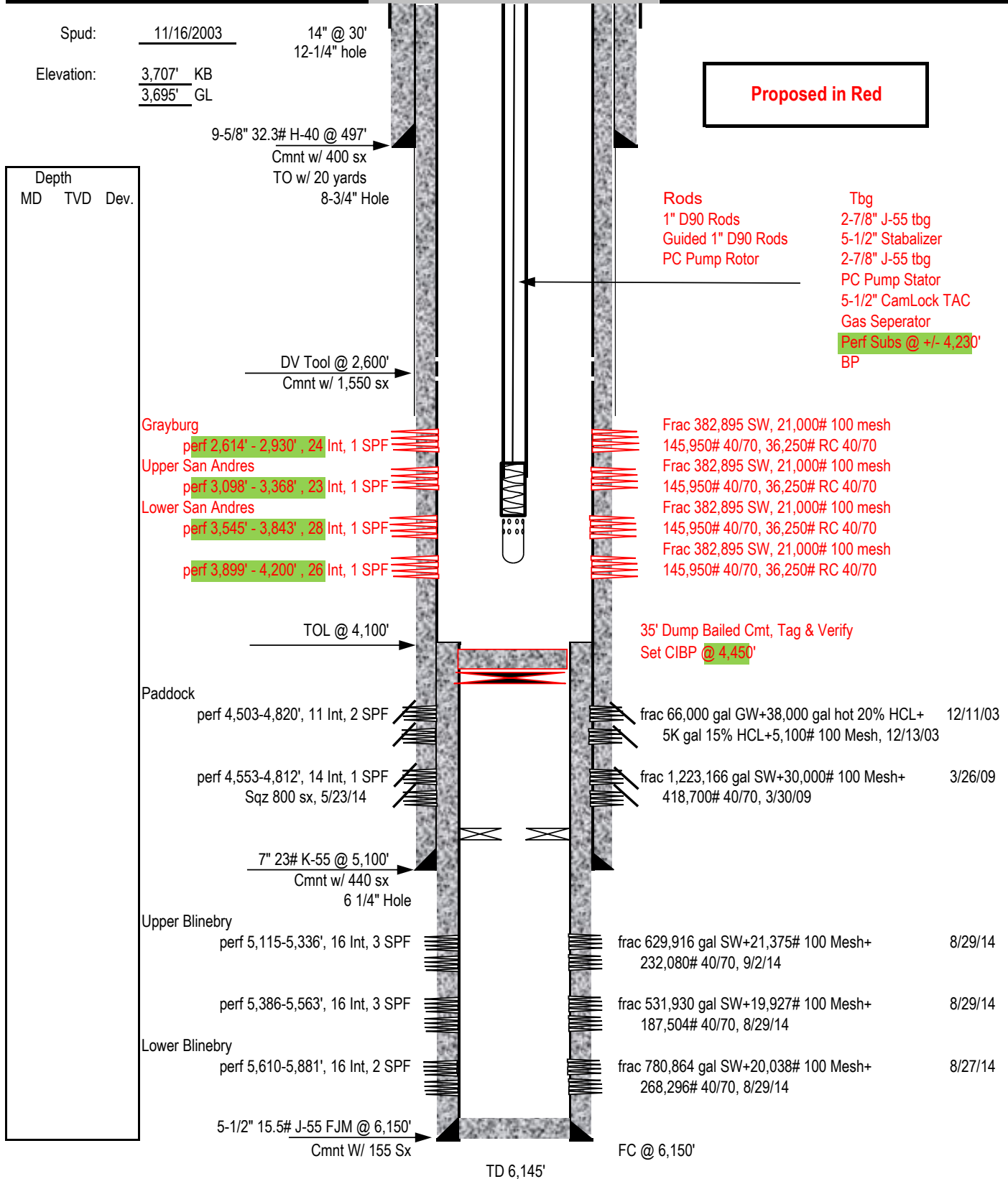
Stage	Fluid Type	Fluid Volume	Prop Conc. (lb/gal)	Proppant	Stage Proppant	Injection Rate
		(gals)	(ppg)		(lbs)	(bpm)
1	Acid	2,000	-	-	-	40
2	Fresh Water	42,000		-	-	65
3	"	7,000	1.00	100 Mesh	7,000	65
4	"	28,000		Sweep		65
5	"	7,000	1.00	100 Mesh	7,000	65
6	"	28,000		Sweep		65
7	"	7,000	1.00	100 Mesh	7,000	65
8	"	42,000		Sweep		65
9	"	7,000	0.10	40/70	700	65
10	"	3,500		Sweep		65
11	"	7,000	0.25	40/70	1,750	65
12	"	3,500		Sweep		65
13	"	7,000	0.25	40/70	1,750	65
14	"	3,500		Sweep		65
15	"	7,000	0.50	40/70	3,500	65
16	"	3,500		Sweep		65
17	"	7,000	0.50	40/70	3,500	65
18	"	3,500		Sweep		65
19	"	7,000	0.75	40/70	5,250	65
20	"	3,500		Sweep		65
21	"	7,000	0.75	40/70	5,250	65
22	"	3,500		Sweep		65
23	"	7,000	1.00	40/70	7,000	65
24	"	3,500		Sweep		65
25	"	7,000	1.00	40/70	7,000	65
26	"	3,500		Sweep		65
27	"	7,000	1.00	40/70	7,000	65
28	"	3,500		Sweep		65
29	"	7,000	1.25	40/70	8,750	65
30	"	3,500		Sweep		65
31	"	7,000	1.25	40/70	8,750	65
32	"	3,500		Sweep		65
33	"	7,000	1.50	40/70	10,500	65
34	"	3,500		Sweep		65
35	"	7,000	1.50	40/70	10,500	65
36	"	3,500		Sweep		65
37	"	7,000	1.75	40/70	12,250	65
38	"	3,500		Sweep		65
39	"	7,000	1.75	40/70	12,250	65
40	"	3,500		Sweep		65
41	"	7,000	1.75	40/70	12,250	65
42	"	3,500		Sweep		65
43	"	7,000	2.00	40/70	14,000	65
44	"	3,500		Sweep		65
45	"	7,000	2.00	40/70	14,000	65
46	"	3,500		Sweep		65
47	"	7,000	1.75	40/70 Super LC	12,250	65
48	"	3,500		Sweep		65
49	"	7,000	2.00	40/70 Super LC	14,000	65
50	"	3,897		Flush	-	65
Stage Totals						
Total Acid (Gals)		2,000		100 Mesh Total (Lbs)		21,000
Total Fresh Water (Gals)		381,897		40/70 Total (Lbs)		145,950
Est pump time (min)		140		RC 40/70 Total (Lbs)		26,250
Totals 4 Stage Job						
Total Acid (Gals)		8,000		100 Mesh Total (Lbs)		84,000
Total Fresh Water (Gals)		1,527,590		40/70 Total (Lbs)		583,800
Est pump time (min)		560		RC 40/70 Total (Lbs)		105,000

Burnett Oil Co., Inc.

**WELL COMPLETION SKETCH**

Date: 8/7/2025

WELL <b>Gissler B 33</b>	FIELD <b>Cedar Lake Yeso</b>	CO/ST <b>Eddy Co., New Mexico</b>
Location: Unit F, Sec 14, 2195' FNL, 2215' FWL, T17S R30E		
<input type="checkbox"/> PRESENT COMPLETION	<input checked="" type="checkbox"/> RECOMMENDED COMPLETION	API # 30-015-33125
<b>PERMANENT WELL BORE DATA</b>		<b>DATA ON THIS COMPLETION</b>

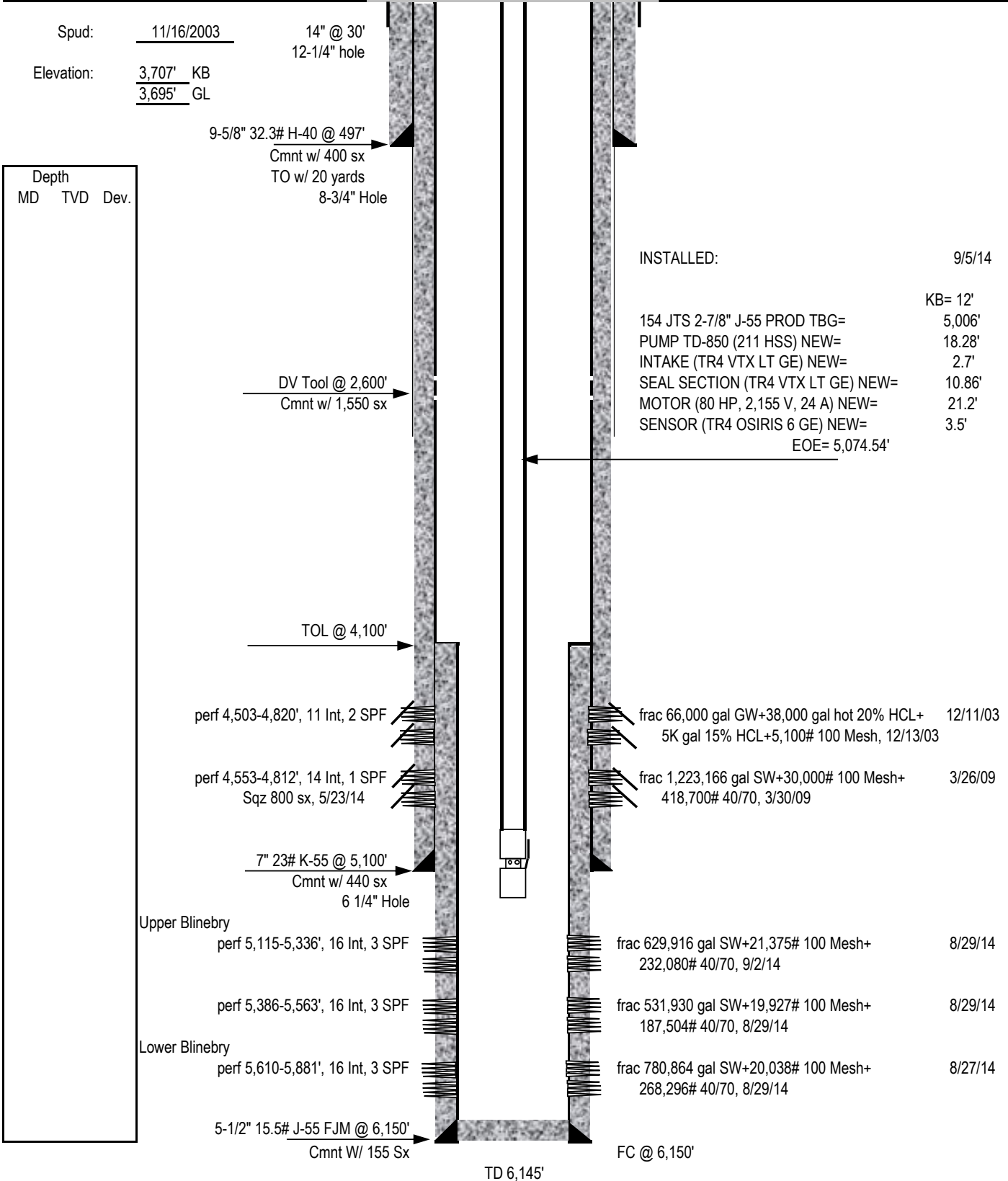


Burnett Oil Co., Inc.

**WELL COMPLETION SKETCH**

Date: 7/21/2017

WELL <b>Gissler B 33</b>	FIELD <b>Cedar Lake Yeso</b>	CO/ST <b>Eddy Co., New Mexico</b>
Location: Unit F, Sec 14, 2195' FNL, 2215' FWL, T17S R30E		
<input type="checkbox"/> PRESENT COMPLETION	<input type="checkbox"/> RECOMMENDED COMPLETION	API # 30-015-33125
<b>PERMANENT WELL BORE DATA</b>		<b>DATA ON THIS COMPLETION</b>



Well in Lesser Prairie Chicken Area. Please review additional requirements in COA below

**Gissler B #33****Burnett Oil Co., Inc.****Gissler B #33****Cedar Lake Yeso****Eddy Co., NM**

BTY: GB3-3

LEASE: NMNM074939

API: 30-015-33125

LEGAL: Unit F, 2195' FNL, 2215' FWL, Sec 14, T17S R30E

Elevation: 3,695' GL, 3,707' KB

TD: 6,145'

Casing: 9-5/8" 32.3#/ft, Set @ 497'

7" 23# K-55 @ 5,100'

DV @ 2,600'

5-1/2" 15.5# J-55 @ 6,150'

Tops:  
San Andres 2926'  
Glorietta 4392'**TOP OF LINER @ 4,100'**

Perfs (Szqd): 4,503-4,812'

Existing Open Perfs: 5,115-5,881'

**4 Stage Grayburg & San Andres Completion Procedure:****STAGE #1 Lower Lower San Andres**

- 1) MIRU pulling unit
- 2) POOH Standing back rods /Tbg. LD pump & production BHA.
- 3) RIH to +/- 4,460' on 2-7/8" tbg w/ 4-7/8" Bit/scraper. POOH standing back, RIH to +/- 4,085' with 6-1/4" Bit/Scraper. POOH Standing back & LD Bit/scraper.
- 4) MIRU WL. RIH & set 5-1/2" CIBP @ +/- 4,450'. **Spot Class C cmt on top of CIBP to 4300'. 25sks minimum, verify Top of cmt. Covering Glorietta top.**
- 5) Test casing to +/- 2,000# surface pressure for 15 minutes.
  - i. If it does not test, we may run packer to isolate, identify leak to sqz and retest.
- 6) Perf (3,899-4,200') w/ 3-1/8" guns, Dyna Frac Tune GH Charge type, RDX explosive type, 22.7g explosive weight, 0.42 EHD, "even hole size", holes per logs as indicated below.
- 7) Dump Bail Acid as needed to establish Injection rate into Interval.
- 8) MIRU CUDD & Frac Equipment. Frac down casing per design.
- 9) Over displace Flush by 150 bbls after 1# read on in-line.

**STAGE #2 Upper Lower San Andres**

- 10) During flush on stage #1, pump 2,000 gallons 15% acid (at less than 40 BPM) and displace to area of next perforation.

**Gissler B #33**

- 11) TIH set wireline set composite bridge plug between top perf of the Lower Lower San Andres which is at 3,899' and below the bottom perf of the Upper Lower San Andres which is at 3,843', TOOH.
- 12) After RBP is set, test csg to 2000# surface pressure for 15 minutes.
- 13) TIH with wire line and Perforate the Upper Lower San Andres Formation (3,545-3,843') w/ 3-1/8" guns, Dyna Frac Tune GH Charge type, RDX explosive type, 22.7g explosive weight, 0.42 EHD, "even hole size", holes per logs as indicated below.
- 14) Begin pumping ASAP.
- 15) Pump stage as designed.
- 16) Over displace Flush by 150 bbls after 1# read on in-line.

**STAGE #3 Upper San Andres**

- 17) During flush on stage #2, pump 2,000 gallons 15% acid (at less than 40 BPM) and displace to area of next perforation.
- 18) TIH set wireline set composite bridge plug between top perf of the Upper Lower San Andres which is at 3,545' and below the bottom perf of the Upper San Andres which is at 3,368', TOOH.
- 19) After RBP is set, test csg to 2000# surface pressure for 15 minutes.
- 20) TIH with wire line and Perforate the Upper San Andres Formation (3,098-3,368') w/ 3-1/8" guns, Dyna Frac Tune GH Charge type, RDX explosive type, 22.7g explosive weight, 0.42 EHD, "even hole size", holes per logs as indicated below.
- 21) Begin pumping ASAP.
- 22) Pump stage as designed.
- 23) Over displace Flush by 150 bbls after 1# read on in-line.

**STAGE #4 Grayburg**

- 24) During flush on stage #3, pump 2,000 gallons 15% acid (at less than 40 BPM) and displace to area of next perforation.
- 25) TIH set wireline set composite bridge plug between top perf of the Upper San Andres which is at 3,098' and below the bottom perf of the Grayburg which is at 2,930', TOOH.
- 26) After RBP is set, test csg to 2000# surface pressure for 15 minutes.
- 27) TIH with wire line and Perforate the Grayburg Formation (2,614-2,930') w/ 3-1/8" guns, Dyna Frac Tune GH Charge type, RDX explosive type, 22.7g explosive weight, 0.42 EHD, "even hole size", holes per logs as indicated below.
- 28) RDMO WL.
- 29) Begin pumping ASAP.
- 30) Pump stage as designed.
- 31) Over displace Flush by 150 bbls after 1# read on in-line.

**Gissler B #33**

- 32) RDMO CUDD and frac equipment.
- 33) Upon completion of the Grayburg/San Andres, wait at least 12 hours before getting back on the well to let resin coated sand set up.
- 34) RU drilling BHA w/bit. Setup surface equipment. Drill out CBP's & circ hole clean. POOH LD BHA/Bit. Rls surface drilling support equipment.
- 35) RIH w/ (Btm to top) BP, Perf Subs, Gas Separator, 5-1/2" CamLock TAC, PC Pump Stator, 2-7/8" tbg to 5-1/2" Stabilizer, then 2-7/8" J-55 Tbg to surf.
- a. Rods (Btm to top) PC Pump Rotor, Guided 1" D90 Rods, bare 1" D90 Rods to surf.
- 36) RDMO PU & Kill Truck, Return Well to Production

**PC PUMP:** Blake Parrish 432.209.2548 Petro Lift Solutions

To supply pump, tbg hanger, tbg anchor, crossovers, tubing subs, polished rod, rod clamp, wedge meter, rod lock, pressure transducers as needed.

Please review BLM conditions of approval following this procedure below.

**APPROVED**

By Keith Immatty at 7:11 pm, Sep 05, 2025

**DESIGN / FLUID CRITERIA/ ADDITIVES (PER STAGE)**

- |  |  |
|--|--|
| • Design Pump rate - 65 bpm.                     | Friction Reducer - provided by Supreme |
| • Maximum Pump rate - 70 bpm.                    | Biocide - provided by Supreme          |
| • Maximum treating pressure - 3,700 psi.         | Scale Inhibitor - provided by Supreme  |
| • HHP required 5,895 HHP.                        | FR Breaker- provided by Supreme        |
| • Fluid - Produced Water                         | Surfactant- provided by Supreme        |
| • Based on pumping down 7" 23# J-55 & 5.5" 15.5# | DIESEL - Supplied by BOCI              |
| • Shower trailer - Supplied by BOCI              | BOCI supplies Iron Restraints          |
| • All Sand & Storage Supplied by CUDD            |  |

**Additive Pump Rates (PER STAGE)**

Scale Inhibitor Supreme SI-210 pumped at .5 gal per 1,000 gals.

FR Supreme XB-2 pumped at 1 gal per 1,000 gals.

Surfactant Supreme ST-FLB pumped at .5 gal per 1,000 gals.

Biocide Supreme QD10 pumped at .25 gal per 1,000 gals.

FR Breaker Supreme Slick Break pumped at .5 gal per 1,000 gals.

IF Produced water is used instead of Fresh Water.

Produced Water Treatment supplied by Supreme. WT-34 pumped at .25 gal per 1,000 gals.

Aiming for an Oxidated Rate Potential (ORP) to be 200-400

**ADDITIONAL EQUIPMENT: (PER STAGE)**

- 2 in-line densiometer(s).
- Sand sieves, and associated equipment to perform QC on location. Sand sieves on all compartments and water analysis on pit water.
- Pressure relief valve on the casing and kickouts or popoff required on downhole pumps.

## Gissler B #33

Gissler A #22 STAGE #1 Lower Lower San Andres Interval 7" & 5-1/2" TOL @ 4,096'									
3,899	3,907	3,913	3,924	3,935	3,942	3,950	3,966	3,980	3,994
3,999	4,008	4,015	4,022	4,030	4,039	4,080	4,085	4,090	4,105
4,114	4,161	4,169	4,182	4,191	4,200				
Interval	26 Depths	26 @ 1 SPF		1 SPF @ 0.42" holes at 90* phasing					
301'	26 Shots								

Gissler A #22 STAGE #2 Upper Lower San Andres Interval									
3,545	3,550	3,555	3,563	3,577	3,591	3,600	3,610	3,616	3,628
3,632	3,645	3,660	3,665	3,679	3,693	3,707	3,721	3,732	3,740
3,752	3,766	3,780	3,808	3,816	3,823	3,836	3,843		
Interval	28 Depths	28 @ 1 SPF		1 SPF @ 0.42" holes at 90* phasing					
298'	28 Shots								

Gissler A #22 STAGE #3 Upper San Andres Interval									
3,098	3,101	3,105	3,134	3,136	3,189	3,192	3,195	3,197	3,202
3,206	3,210	3,336	3,339	3,342	3,344	3,346	3,348	3,350	3,360
3,363	3,366	3,368							
Interval	23 Depths	23 @ 1 SPF		1 SPF @ 0.42" holes at 90* phasing					
270'	23 Shots								

Gissler A #22 STAGE #4 Grayburg Interval									
2,614	2,619	2,660	2,663	2,667	2,684	2,689	2,694	2,699	2,741
2,746	2,752	2,800	2,808	2,812	2,816	2,840	2,842	2,886	2,890
2,893	2,922	2,926	2,930						
Interval	24 Depths	24 @ 1 SPF		1 SPF @ 0.42" holes at 90* phasing					
316'	24 Shots								



## Gissler B #33

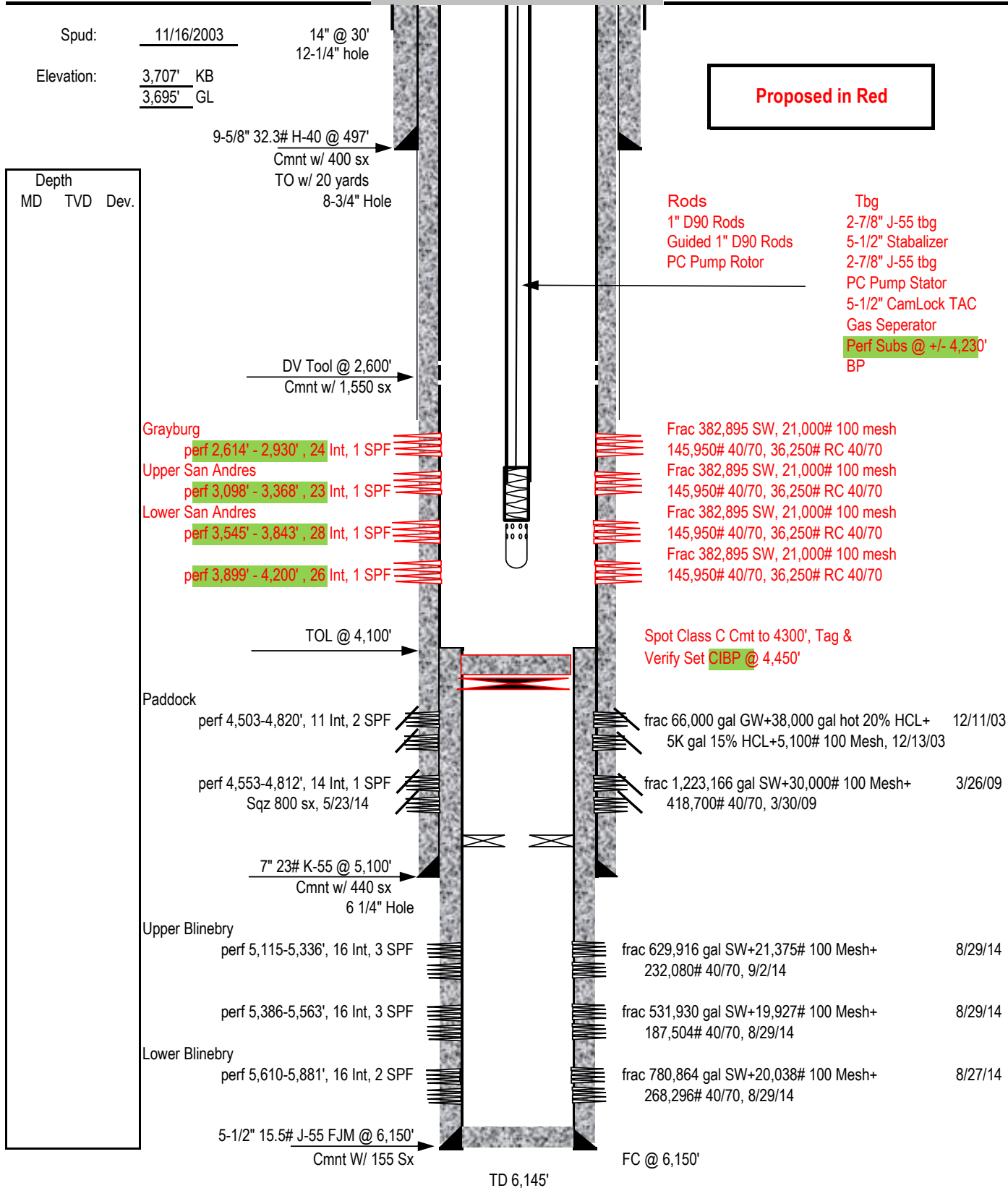
Stage	Fluid Type	Fluid Volume	Prop Conc. (lb/gal)	Proppant	Stage Proppant	Injection Rate
		(gals)	(ppg)		(lbs)	(bpm)
1	Acid	2,000	-	-	-	40
2	Fresh Water	42,000		-	-	65
3	"	7,000	1.00	100 Mesh	7,000	65
4	"	28,000		Sweep		65
5	"	7,000	1.00	100 Mesh	7,000	65
6	"	28,000		Sweep		65
7	"	7,000	1.00	100 Mesh	7,000	65
8	"	42,000		Sweep		65
9	"	7,000	0.10	40/70	700	65
10	"	3,500		Sweep		65
11	"	7,000	0.25	40/70	1,750	65
12	"	3,500		Sweep		65
13	"	7,000	0.25	40/70	1,750	65
14	"	3,500		Sweep		65
15	"	7,000	0.50	40/70	3,500	65
16	"	3,500		Sweep		65
17	"	7,000	0.50	40/70	3,500	65
18	"	3,500		Sweep		65
19	"	7,000	0.75	40/70	5,250	65
20	"	3,500		Sweep		65
21	"	7,000	0.75	40/70	5,250	65
22	"	3,500		Sweep		65
23	"	7,000	1.00	40/70	7,000	65
24	"	3,500		Sweep		65
25	"	7,000	1.00	40/70	7,000	65
26	"	3,500		Sweep		65
27	"	7,000	1.00	40/70	7,000	65
28	"	3,500		Sweep		65
29	"	7,000	1.25	40/70	8,750	65
30	"	3,500		Sweep		65
31	"	7,000	1.25	40/70	8,750	65
32	"	3,500		Sweep		65
33	"	7,000	1.50	40/70	10,500	65
34	"	3,500		Sweep		65
35	"	7,000	1.50	40/70	10,500	65
36	"	3,500		Sweep		65
37	"	7,000	1.75	40/70	12,250	65
38	"	3,500		Sweep		65
39	"	7,000	1.75	40/70	12,250	65
40	"	3,500		Sweep		65
41	"	7,000	1.75	40/70	12,250	65
42	"	3,500		Sweep		65
43	"	7,000	2.00	40/70	14,000	65
44	"	3,500		Sweep		65
45	"	7,000	2.00	40/70	14,000	65
46	"	3,500		Sweep		65
47	"	7,000	1.75	40/70 Super LC	12,250	65
48	"	3,500		Sweep		65
49	"	7,000	2.00	40/70 Super LC	14,000	65
50	"	3,897		Flush	-	65
Stage Totals						
Total Acid (Gals)		2,000		100 Mesh Total (Lbs)		21,000
Total Fresh Water (Gals)		381,897		40/70 Total (Lbs)		145,950
Est pump time (min)		140		RC 40/70 Total (Lbs)		26,250
Totals 4 Stage Job						
Total Acid (Gals)		8,000		100 Mesh Total (Lbs)		84,000
Total Fresh Water (Gals)		1,527,590		40/70 Total (Lbs)		583,800
Est pump time (min)		560		RC 40/70 Total (Lbs)		105,000

Burnett Oil Co., Inc.

**WELL COMPLETION SKETCH**

Date: 8/7/2025

WELL <b>Gissler B 33</b>	FIELD <b>Cedar Lake Yeso</b>	CO/ST <b>Eddy Co., New Mexico</b>
Location: Unit F, Sec 14, 2195' FNL, 2215' FWL, T17S R30E		
<input type="checkbox"/> PRESENT COMPLETION	<input checked="" type="checkbox"/> RECOMMENDED COMPLETION	API # 30-015-33125
<b>PERMANENT WELL BORE DATA</b>		<b>DATA ON THIS COMPLETION</b>

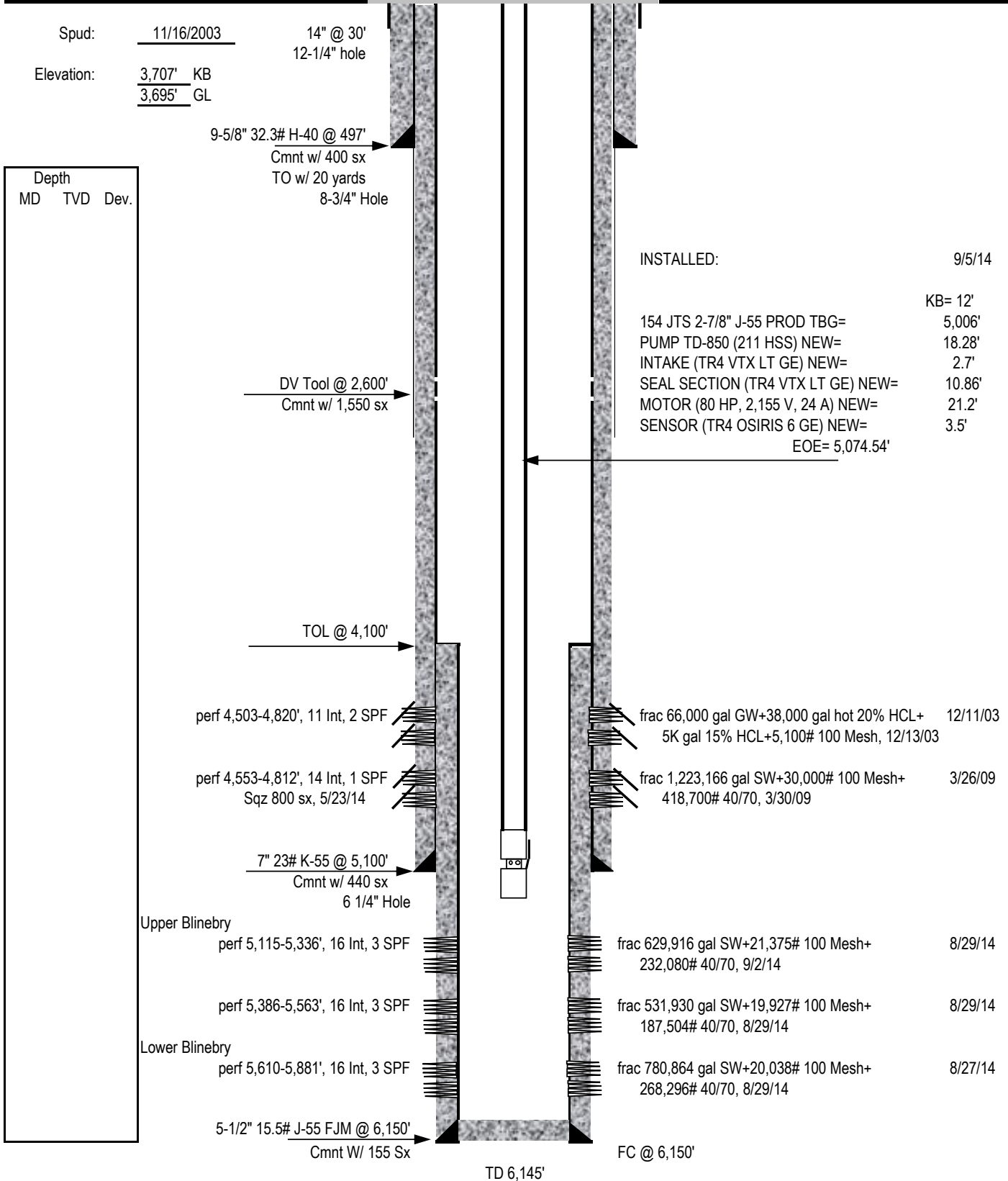


Burnett Oil Co., Inc.

**WELL COMPLETION SKETCH**

Date: 7/21/2017

WELL <b>Gissler B 33</b>	FIELD <b>Cedar Lake Yeso</b>	CO/ST <b>Eddy Co., New Mexico</b>
Location: Unit F, Sec 14, 2195' FNL, 2215' FWL, T17S R30E		
<input type="checkbox"/> PRESENT COMPLETION	<input type="checkbox"/> RECOMMENDED COMPLETION	API # 30-015-33125
<b>PERMANENT WELL BORE DATA</b>		<b>DATA ON THIS COMPLETION</b>



**BUREAU OF LAND MANAGEMENT**  
**Carlsbad Field Office**  
**620 East Greene Street**  
**Carlsbad, New Mexico 88220**  
**575-234-5972**

**Conditions of Approval for Permanent Abandonment of a Production Zone**

Failure to comply with the following Conditions of Approval may result in a Notice of Incidents of Noncompliance (INC) in accordance with 43 CFR 3163.1.

1. Plugging operations shall commence within ninety (90) days from the approval date of this Notice of Intent to Plug Back.

**If you are unable to plug the well by the 90<sup>th</sup> day provide this office, prior to the 90<sup>th</sup> day, with the reason for not meeting the deadline and a date when we can expect the completed interval to be plugged. Failure to do so will result in enforcement action.**

**The rig used for the plugging procedure cannot be released and moved off without the prior approval of the authorized officer. Failure to do so may result in enforcement action.**

2. Notification: Contact the appropriate BLM office at least 24 hours prior to the commencing of any plug back operations. For wells in Chaves and Roosevelt County, call 575-627-0272; Eddy County, call 575-361-2822; Lea County, call 575-689-5981
3. Blowout Preventers: A blowout preventer (BOP), as appropriate, shall be installed before commencing any plugging operation. The BOP must be installed and maintained as per API and manufacturer recommendations. The minimum BOP requirement is a 2M system for a well not deeper than 9,100 feet, a 3M system for a well not deeper than 13,600 feet, or a 5M system for a well not deeper than 22,700 feet (all depths are for measured well depth).
4. Mud Requirement: Mud shall be placed between all plugs. Minimum consistency of plugging mud shall be obtained by mixing at the rate of 25 sacks (50 pounds each) of gel per 100 barrels of brine water. Minimum nine (9) pounds per gallon.
5. Cement Requirement: Sufficient cement shall be used to bring any required plug to the specified depth and length. Any given cement volumes on the proposed plugging procedure are merely estimates and are not final. Unless specific approval is received, no plug except the surface plug shall be less than 25 sacks of cement. Any plug that requires a tag will have a minimum WOC time of 4 hours.

In lieu of a cement plug across perforations in a cased hole (not for any other plugs), a bridge plug set within 50 feet to 100 feet above the perforations shall be capped with 25 sacks of cement. If a bailer is used to cap this plug, 35 feet of cement shall be sufficient. **Before pumping or bailing cement on top of CIBP, tag will be required to verify depth. Based on depth, a tag of the cement may be deemed necessary.**

Unless otherwise specified in the approved procedure, the cement plug shall consist of either Neat Class "C", for up to 7,500 feet of depth or Neat Class "H", for deeper than 7,500 feet plugs.

6. Casing Integrity Test: The casing shall be filled with corrosion inhibited fluid above the CIBP and pressure tested to 1000 psi surface pressure with a pressure drop not more than 10 percent over 15-minute period. If the well does not pass the casing integrity test, then the operator shall either repair the casing and re-test or within 30 days submit a procedure to plug and abandon the well.
7. Subsequent Plug back Reporting: Within 30 days after plug back work is completed, file a Subsequent Report (Form 3160-5) or via the AFMSS 2 WISx Module to BLM. The report should give in detail the manner in which the plug back work was carried out, the extent (by depths) of cement plugs placed, and the size and location (by depths) of casing left in the well. Show date zone was plugged. After plugging back to a new zone submit a Completion Report (Form 3160-4) or via the AFMSS 2 WISx Module with the Subsequent Report. The plugged zone shall be in plug back status.

Include the following information:

- a. A well bore diagram with all perforations, CIBP's, and tops of cement on CIBP's.
  - b. A description of the plug back procedure.
  - c. A clear copy or the original of the pressure test chart.
  - d. A copy of any logs ran.
8. Trash: All trash, junk and other waste material shall be contained in trash cages or bins to prevent scattering and will be removed and deposited in an approved sanitary landfill. Burial on site is not permitted.
  9. If well location is within the Timing Limitation Stipulation Area for Lesser Prairie-Chicken:  
From March 1<sup>st</sup> through June 15<sup>th</sup> annually, abandonment activities will be allowed except between the hours from 3:00 am and 9:00 am. Normal vehicle use on existing roads will not be restricted.

C-102  Submit Electronically Via OCD Permitting	State of New Mexico Energy, Minerals & Natural Resources Department OIL CONSERVATION DIVISION	Revised July 9, 2024	
		Submittal Type:	<input type="checkbox"/> Initial Submittal
			<input checked="" type="checkbox"/> Amended Report
		<input type="checkbox"/> As Drilled	

## WELL LOCATION INFORMATION

API Number <b>30-015-33125</b>	Pool Code <b>28509</b>	Pool Name <b>GRAYBURG JACKSON; SR-Q-G-SA</b>
Property Code <b>2389</b>	Property Name <b>GISSLER "B"</b>	Well Number <b>33</b>
OGRID No. <b>3080</b>	Operator Name <b>BURNETT OIL COMPANY, INC.</b>	Ground Level Elevation <b>3698.8'</b>
Surface Owner: <input type="checkbox"/> State <input type="checkbox"/> Fee <input type="checkbox"/> Tribal <input checked="" type="checkbox"/> Federal		Mineral Owner: <input type="checkbox"/> State <input type="checkbox"/> Fee <input type="checkbox"/> Tribal <input checked="" type="checkbox"/> Federal

## Surface Location

UL <b>F</b>	Section <b>14</b>	Township <b>17-S</b>	Range <b>30-E</b>	Lot	Ft. from N/S <b>2195 FNL</b>	Ft. from E/W <b>2214 FWL</b>	Latitude <b>32.835713°N</b>	Longitude <b>103.943972°W</b>	County <b>EDDY</b>
----------------	----------------------	-------------------------	----------------------	-----	---------------------------------	---------------------------------	--------------------------------	----------------------------------	-----------------------

## Bottom Hole Location

UL <b>F</b>	Section <b>14</b>	Township <b>17-S</b>	Range <b>30-E</b>	Lot	Ft. from N/S <b>2195 FNL</b>	Ft. from E/W <b>2214 FWL</b>	Latitude <b>32.835713</b>	Longitude <b>103.943972</b>	County <b>EDDY</b>
----------------	----------------------	-------------------------	----------------------	-----	---------------------------------	---------------------------------	------------------------------	--------------------------------	-----------------------

Dedicated Acres <b>40</b>	Infill or Defining Well	Defining Well API	Overlapping Spacing Unit (Y/N)	Consolidation Code
Order Numbers.			Well setbacks are under Common Ownership: <input type="checkbox"/> Yes <input type="checkbox"/> No	

## Kick Off Point (KOP)

UL	Section	Township	Range	Lot	Ft. from N/S	Ft. from E/W	Latitude	Longitude	County
----	---------	----------	-------	-----	--------------	--------------	----------	-----------	--------

## First Take Point (FTP)

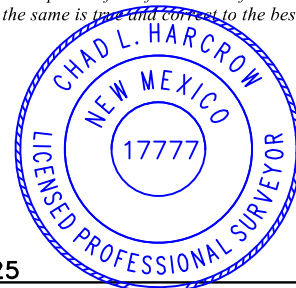
UL	Section	Township	Range	Lot	Ft. from N/S	Ft. from E/W	Latitude	Longitude	County
----	---------	----------	-------	-----	--------------	--------------	----------	-----------	--------

## Last Take Point (LTP)

UL	Section	Township	Range	Lot	Ft. from N/S	Ft. from E/W	Latitude	Longitude	County
----	---------	----------	-------	-----	--------------	--------------	----------	-----------	--------

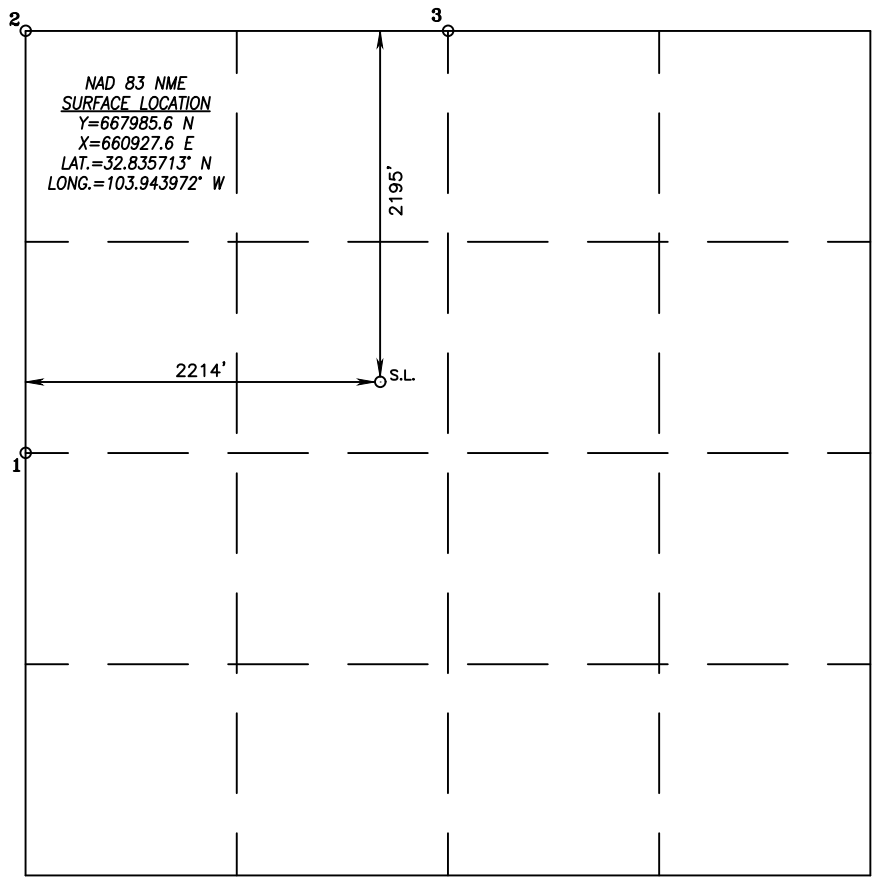
Unitized Area or Area of Uniform Interest	Spacing Unit Type <input type="checkbox"/> Horizontal <input type="checkbox"/> Vertical	Ground Floor Elevation:
---	---	-------------------------

<b>OPERATOR CERTIFICATIONS</b>  <i>I hereby certify that the information contained herein is true and complete to the best of my knowledge and belief, and, if the well is a vertical or directional well, that this organization either owns a working interest or unleased mineral interest in the land including the proposed bottom hole location or has a right to drill this well at this location pursuant to a contract with an owner of a working interest or unleased mineral interest, or to a voluntary pooling agreement or a compulsory pooling order heretofore entered by the division.</i>  <i>If this well is a horizontal well, I further certify that this organization has received the consent of at least one lessee or owner of a working interest or unleased mineral interest in each tract (in the target pool or formation) in which any part of the well's completed interval will be located or obtained a compulsory pooling order from the division.</i>		<b>SURVEYOR CERTIFICATIONS</b>  <i>I hereby certify that the well location shown on this plat was plotted from field notes of actual surveys made by me or under my supervision, and that the same is true and correct to the best of my belief.</i>	
Signature <i>Randy Bolles</i>	Date 9/5/25	Signature and Seal of Professional Surveyor <i>Chad Harcrow</i> 8/15/25	
Printed Name Randy Bolles	Email Address rbolles@cox.net	Certificate Number 17777	Date of Survey AUGUST 14, 2025
		W.O.#25-998	DRAWN BY: WN
		PAGE 1 OF 2	



This grid represents a standard section. You may superimpose a non-standard section, or larger area, over this grid. Operators must outline the dedicated acreage in a red box, clearly show the well surface location and bottom hole location, if it is directionally drilled, with the dimensions from the section lines in the cardinal directions. If this is a horizontal wellbore show on this plat the location of the First Take Point and Last Take Point, and the point within the Completed interval (other than the First Take Point or Last Take Point) that is closest to any outer boundary of the tract.

Surveyors shall use the latest United States government survey or dependent resurvey. Well locations will be in reference to the New Mexico Principal Meridian. If the land is not surveyed, contact the OCD Engineering Bureau. Independent subdivision surveys will not be acceptable.



POINT LEGEND	
1	Y=667535.2 N X=658714.5 E
2	Y=670171.5 N X=658706.3 E
3	Y=670162.3 N X=661346.1 E

**Burnett Oil Co., Inc.**  
**Gissler B #33**  
**Cedar Lake Yeso**  
**Eddy Co., NM**

API: 30-015-33125

**Casing:** 9-5/8" 32.3#/ft, Set @ 497'  
7" 23# K-55 @ 5,100'  
DV @ 2,600'  
5-1/2" 15.5# J-55 @ 6,150'

**TOP OF LINER @ 4,100'**

**Existing Open Perfs: 5,115-5,881'**

#### 4 Stage Grayburg & San Andres Completion Procedure:

## STAGE #1 Lower Lower San Andres

- 1) MIRU pulling unit
- 2) POOH Standing back rods /Tbg. LD pump & production BHA.
- 3) RIH to +/- 4,460' on 2-7/8" tbg w/ 4-7/8" Bit/scrapper. POOH standing back, RIH to +/- 4,085' with 6-1/4" Bit/Scrapper. POOH Standing back & LD Bit/scrapper.
- 4) MIRU WL. RIH & set 5-1/2" CIBP @ +/- 4,450'. Dump bail 35' cmt on top of CIBP, verify Top of cmt.
- 5) Test casing to +/- 2,000# surface pressure for 15 minutes.
  - i. If it does not test, we may run packer to isolate, identify leak to sqz and retest.
- 6) Perf (3,899-4,200') w/ 3-1/8" guns, Dyna Frac Tune GH Charge type, RDX explosive type, 22.7g explosive weight, 0.42 EHD, "even hole size", holes per logs as indicated below.
- 7) Dump Bail Acid as needed to establish Injection rate into Interval.
- 8) MIRU CUDD & Frac Equipment. Frac down casing per design.
- 9) Over displace Flush by 150 bbls after 1# read on in-line.

## STAGE #2 Upper Lower San Andres

- 10) During flush on stage #1, pump 2,000 gallons 15% acid (at less than 40 BPM) and displace to area of next perforation.



**Gissler B #33**

- 11) TIH set wireline set composite bridge plug between top perf of the Lower Lower San Andres which is at 3,899' and below the bottom perf of the Upper Lower San Andres which is at 3,843', TOOH.
- 12) After RBP is set, test csg to 2000# surface pressure for 15 minutes.
- 13) TIH with wire line and Perforate the Upper Lower San Andres Formation (3,545-3,843') w/ 3-1/8" guns, Dyna Frac Tune GH Charge type, RDX explosive type, 22.7g explosive weight, 0.42 EHD, "even hole size", holes per logs as indicated below.
- 14) Begin pumping ASAP.
- 15) Pump stage as designed.
- 16) Over displace Flush by 150 bbls after 1# read on in-line.

**STAGE #3 Upper San Andres**

- 17) During flush on stage #2, pump 2,000 gallons 15% acid (at less than 40 BPM) and displace to area of next perforation.
- 18) TIH set wireline set composite bridge plug between top perf of the Upper Lower San Andres which is at 3,545' and below the bottom perf of the Upper San Andres which is at 3,368', TOOH.
- 19) After RBP is set, test csg to 2000# surface pressure for 15 minutes.
- 20) TIH with wire line and Perforate the Upper San Andres Formation (3,098-3,368') w/ 3-1/8" guns, Dyna Frac Tune GH Charge type, RDX explosive type, 22.7g explosive weight, 0.42 EHD, "even hole size", holes per logs as indicated below.
- 21) Begin pumping ASAP.
- 22) Pump stage as designed.
- 23) Over displace Flush by 150 bbls after 1# read on in-line.

**STAGE #4 Grayburg**

- 24) During flush on stage #3, pump 2,000 gallons 15% acid (at less than 40 BPM) and displace to area of next perforation.
- 25) TIH set wireline set composite bridge plug between top perf of the Upper San Andres which is at 3,098' and below the bottom perf of the Grayburg which is at 2,930', TOOH.
- 26) After RBP is set, test csg to 2000# surface pressure for 15 minutes.
- 27) TIH with wire line and Perforate the Grayburg Formation (2,614-2,930') w/ 3-1/8" guns, Dyna Frac Tune GH Charge type, RDX explosive type, 22.7g explosive weight, 0.42 EHD, "even hole size", holes per logs as indicated below.
- 28) RDMO WL.
- 29) Begin pumping ASAP.
- 30) Pump stage as designed.
- 31) Over displace Flush by 150 bbls after 1# read on in-line.

**Gissler B #33**

- 32) RDMO CUDD and frac equipment.
- 33) Upon completion of the Grayburg/San Andres, wait at least 12 hours before getting back on the well to let resin coated sand set up.
- 34) RU drilling BHA w/bit. Setup surface equipment. Drill out CBP's & circ hole clean. POOH LD BHA/Bit. Rls surface drilling support equipment.
- 35) RIH w/ (Btm to top) BP, Perf Subs, Gas Separator, 5-1/2" CamLock TAC, PC Pump Stator, 2-7/8" tbg to 5-1/2" Stabilizer, then 2-7/8" J-55 Tbg to surf.
- a. Rods (Btm to top) PC Pump Rotor, Guided 1" D90 Rods, bare 1" D90 Rods to surf.
- 36) RDMO PU & Kill Truck, Return Well to Production

**PC PUMP:** Blake Parrish 432.209.2548 Petro Lift Solutions

To supply pump, tbg hanger, tbg anchor, crossovers, tubing subs, polished rod, rod clamp, wedge meter, rod lock, pressure transducers as needed.

**DESIGN / FLUID CRITERIA/ ADDITIVES (PER STAGE)**

- |  |                                       |
|--|---------------------------------------|
| • Design Pump rate - 65 bpm.                     | Friction Reducer- provided by Supreme |
| • Maximum Pump rate - 70 bpm.                    | Biocide - provided by Supreme         |
| • Maximum treating pressure - 3,700 psi.         | Scale Inhibitor - provided by Supreme |
| • HHP required 5,895 HHP.                        | FR Breaker- provided by Supreme       |
| • Fluid – Produced Water                         | Surfactant- provided by Supreme       |
| • Based on pumping down 7" 23# J-55 & 5.5" 15.5# | DIESEL - Supplied by BOCI             |
| • Shower trailer - Supplied by BOCI              | BOCI supplies Iron Restraints         |
| • All Sand & Storage Supplied by CUDD            |                                       |

**Additive Pump Rates (PER STAGE)**

Scale Inhibitor Supreme SI-210 pumped at .5 gal per 1,000 gals.

FR Supreme XB-2 pumped at 1 gal per 1,000 gals.

Surfactant Supreme ST-FLB pumped at .5 gal per 1,000 gals.

Biocide Supreme QD10 pumped at .25 gal per 1,000 gals.

FR Breaker Supreme Slick Break pumped at .5 gal per 1,000 gals.

IF Produced water is used instead of Fresh Water.

Produced Water Treatment supplied by Supreme. WT-34 pumped at .25 gal per 1,000 gals.

Aiming for an Oxidated Rate Potential (ORP) to be 200-400

**ADDITIONAL EQUIPMENT: (PER STAGE)**

- 2 in-line densiometer(s).
- Sand sieves, and associated equipment to perform QC on location. Sand sieves on all compartments and water analysis on pit water.
- Pressure relief valve on the casing and kickouts or popoff required on downhole pumps.

## Gissler B #33

Gissler A #22 STAGE #1 Lower Lower San Andres Interval 7" & 5-1/2" TOL @ 4,096'									
3,899	3,907	3,913	3,924	3,935	3,942	3,950	3,966	3,980	3,994
3,999	4,008	4,015	4,022	4,030	4,039	4,080	4,085	4,090	4,105
4,114	4,161	4,169	4,182	4,191	4,200				
Interval	26 Depths	26 @ 1 SPF		1 SPF @ 0.42" holes at 90* phasing					
301'	26 Shots								

Gissler A #22 STAGE #2 Upper Lower San Andres Interval									
3,545	3,550	3,555	3,563	3,577	3,591	3,600	3,610	3,616	3,628
3,632	3,645	3,660	3,665	3,679	3,693	3,707	3,721	3,732	3,740
3,752	3,766	3,780	3,808	3,816	3,823	3,836	3,843		
Interval	28 Depths	28 @ 1 SPF		1 SPF @ 0.42" holes at 90* phasing					
298'	28 Shots								

Gissler A #22 STAGE #3 Upper San Andres Interval									
3,098	3,101	3,105	3,134	3,136	3,189	3,192	3,195	3,197	3,202
3,206	3,210	3,336	3,339	3,342	3,344	3,346	3,348	3,350	3,360
3,363	3,366	3,368							
Interval	23 Depths	23 @ 1 SPF		1 SPF @ 0.42" holes at 90* phasing					
270'	23 Shots								

Gissler A #22 STAGE #4 Grayburg Interval									
2,614	2,619	2,660	2,663	2,667	2,684	2,689	2,694	2,699	2,741
2,746	2,752	2,800	2,808	2,812	2,816	2,840	2,842	2,886	2,890
2,893	2,922	2,926	2,930						
Interval	24 Depths	24 @ 1 SPF		1 SPF @ 0.42" holes at 90* phasing					
316'	24 Shots								

## Gissler B #33

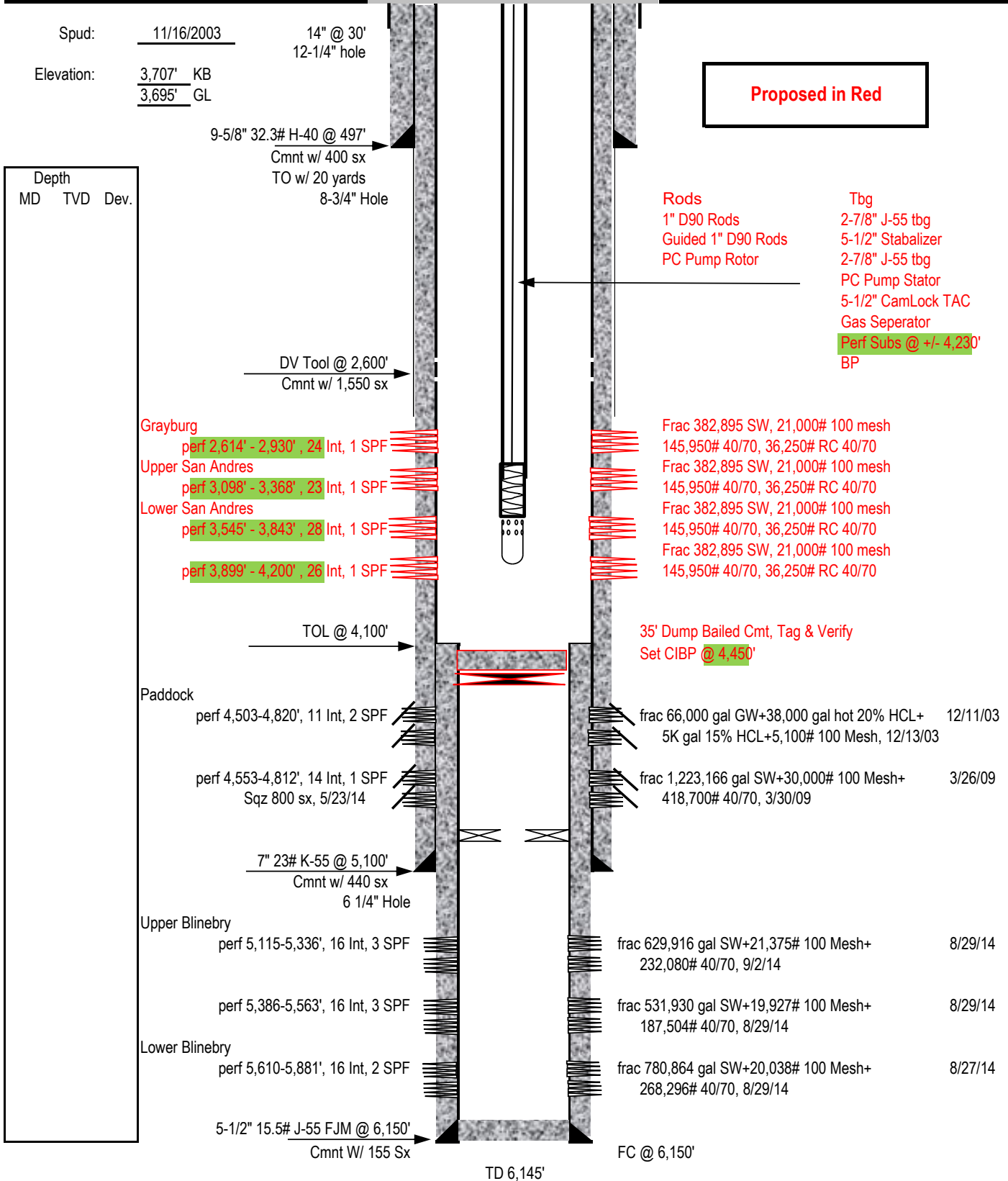
Stage	Fluid Type	Fluid Volume	Prop Conc. (lb/gal)	Proppant	Stage Proppant	Injection Rate
		(gals)	(ppg)		(lbs)	(bpm)
1	Acid	2,000	-	-	-	40
2	Fresh Water	42,000		-	-	65
3	"	7,000	1.00	100 Mesh	7,000	65
4	"	28,000		Sweep		65
5	"	7,000	1.00	100 Mesh	7,000	65
6	"	28,000		Sweep		65
7	"	7,000	1.00	100 Mesh	7,000	65
8	"	42,000		Sweep		65
9	"	7,000	0.10	40/70	700	65
10	"	3,500		Sweep		65
11	"	7,000	0.25	40/70	1,750	65
12	"	3,500		Sweep		65
13	"	7,000	0.25	40/70	1,750	65
14	"	3,500		Sweep		65
15	"	7,000	0.50	40/70	3,500	65
16	"	3,500		Sweep		65
17	"	7,000	0.50	40/70	3,500	65
18	"	3,500		Sweep		65
19	"	7,000	0.75	40/70	5,250	65
20	"	3,500		Sweep		65
21	"	7,000	0.75	40/70	5,250	65
22	"	3,500		Sweep		65
23	"	7,000	1.00	40/70	7,000	65
24	"	3,500		Sweep		65
25	"	7,000	1.00	40/70	7,000	65
26	"	3,500		Sweep		65
27	"	7,000	1.00	40/70	7,000	65
28	"	3,500		Sweep		65
29	"	7,000	1.25	40/70	8,750	65
30	"	3,500		Sweep		65
31	"	7,000	1.25	40/70	8,750	65
32	"	3,500		Sweep		65
33	"	7,000	1.50	40/70	10,500	65
34	"	3,500		Sweep		65
35	"	7,000	1.50	40/70	10,500	65
36	"	3,500		Sweep		65
37	"	7,000	1.75	40/70	12,250	65
38	"	3,500		Sweep		65
39	"	7,000	1.75	40/70	12,250	65
40	"	3,500		Sweep		65
41	"	7,000	1.75	40/70	12,250	65
42	"	3,500		Sweep		65
43	"	7,000	2.00	40/70	14,000	65
44	"	3,500		Sweep		65
45	"	7,000	2.00	40/70	14,000	65
46	"	3,500		Sweep		65
47	"	7,000	1.75	40/70 Super LC	12,250	65
48	"	3,500		Sweep		65
49	"	7,000	2.00	40/70 Super LC	14,000	65
50	"	3,897		Flush	-	65
Stage Totals						
Total Acid (Gals)		2,000		100 Mesh Total (Lbs)		21,000
Total Fresh Water (Gals)		381,897		40/70 Total (Lbs)		145,950
Est pump time (min)		140		RC 40/70 Total (Lbs)		26,250
Totals 4 Stage Job						
Total Acid (Gals)		8,000		100 Mesh Total (Lbs)		84,000
Total Fresh Water (Gals)		1,527,590		40/70 Total (Lbs)		583,800
Est pump time (min)		560		RC 40/70 Total (Lbs)		105,000

Burnett Oil Co., Inc.

**WELL COMPLETION SKETCH**

Date: 8/7/2025

WELL <b>Gissler B 33</b>	FIELD <b>Cedar Lake Yeso</b>	CO/ST <b>Eddy Co., New Mexico</b>
Location: Unit F, Sec 14, 2195' FNL, 2215' FWL, T17S R30E		API # 30-015-33125
<input type="checkbox"/> PRESENT COMPLETION	<input checked="" type="checkbox"/> RECOMMENDED COMPLETION	

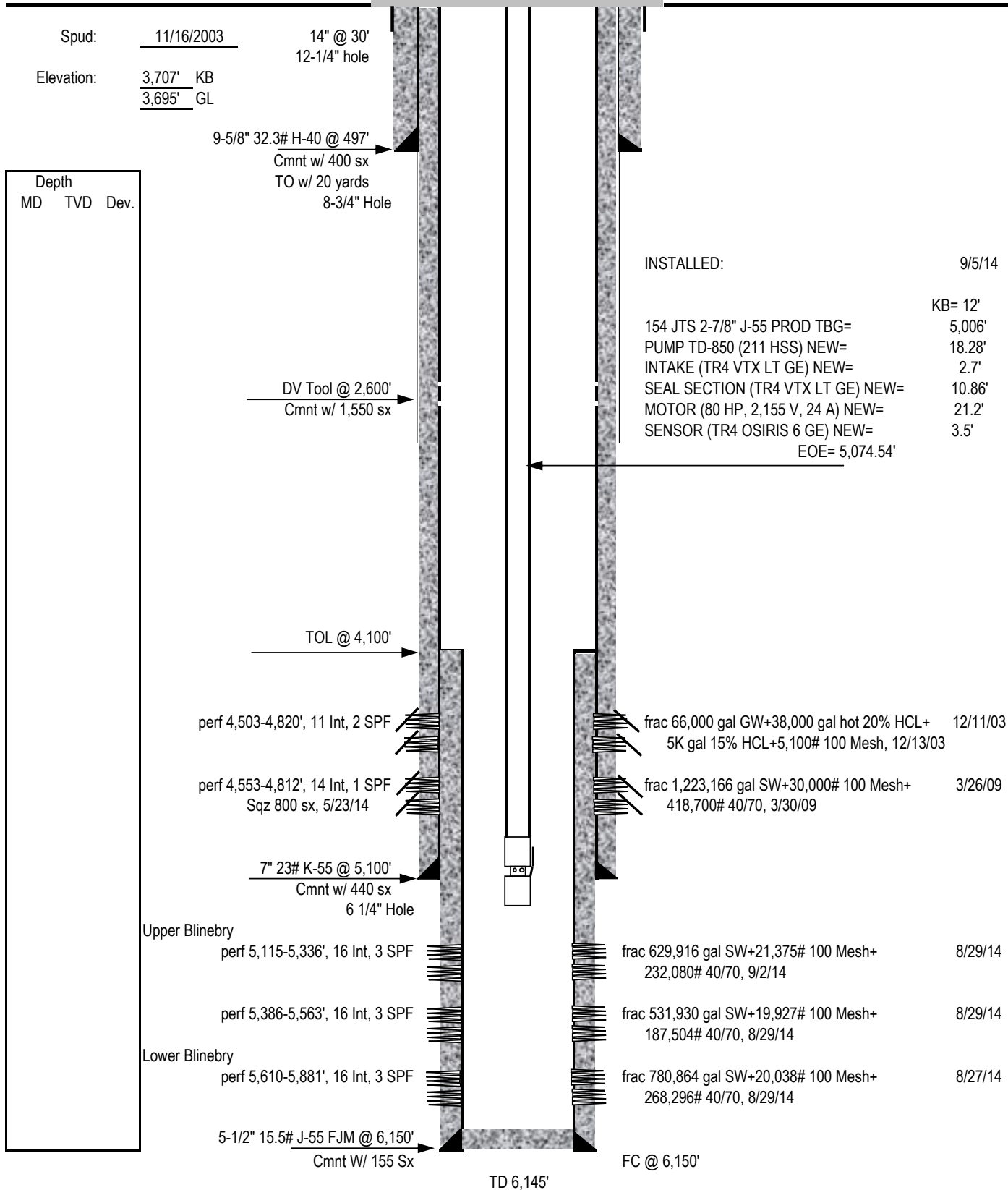
**PERMANENT WELL BORE DATA****DATA ON THIS COMPLETION**

Burnett Oil Co., Inc.

**WELL COMPLETION SKETCH**

Date: 7/21/2017

WELL <b>Gissler B 33</b>	FIELD <b>Cedar Lake Yeso</b>	CO/ST <b>Eddy Co., New Mexico</b>
Location: Unit F, Sec 14, 2195' FNL, 2215' FWL, T17S R30E		
<input type="checkbox"/> PRESENT COMPLETION	<input type="checkbox"/> RECOMMENDED COMPLETION	API # 30-015-33125
<b>PERMANENT WELL BORE DATA</b>		<b>DATA ON THIS COMPLETION</b>

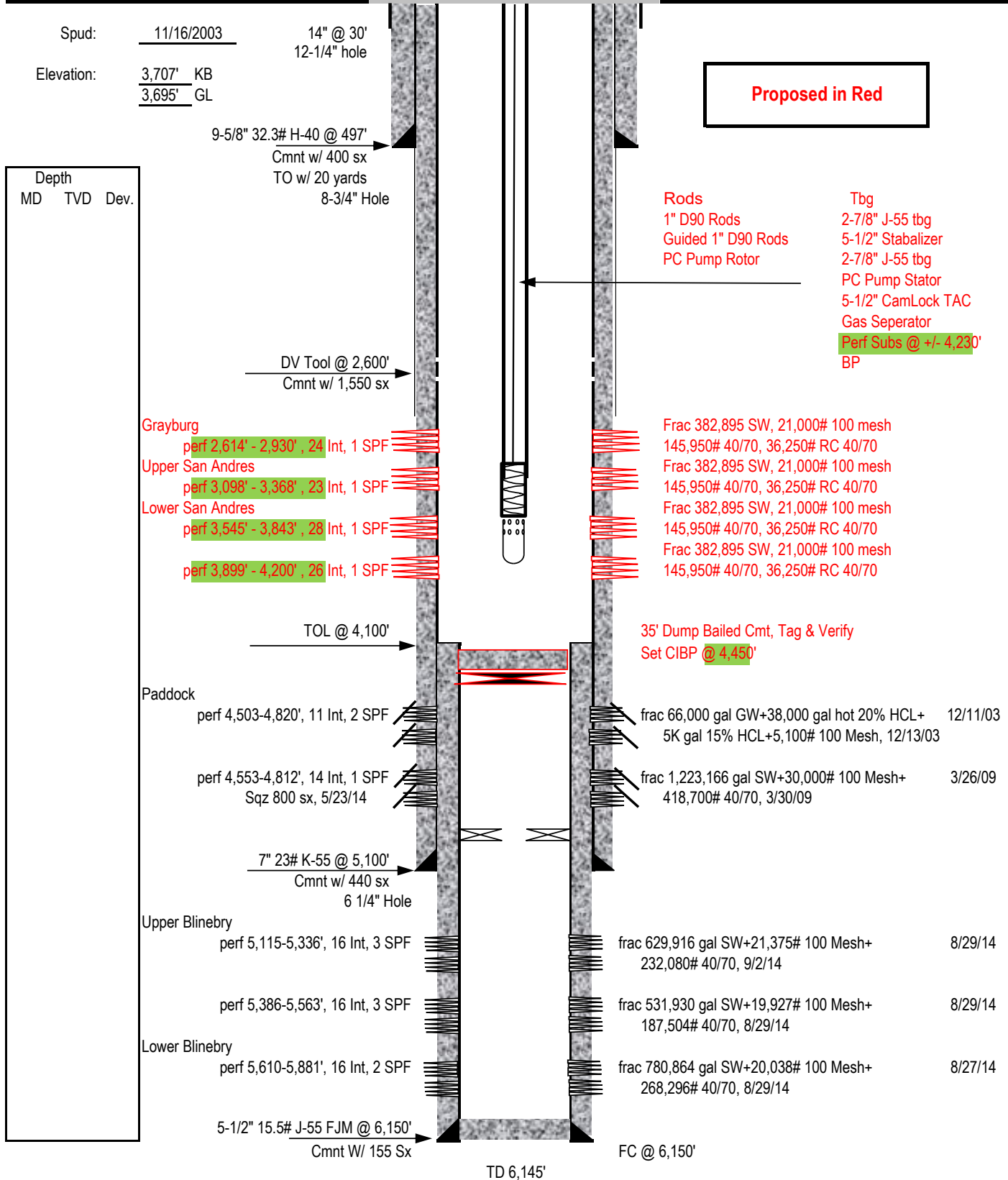


Burnett Oil Co., Inc.

**WELL COMPLETION SKETCH**

Date: 8/7/2025

WELL <b>Gissler B 33</b>	FIELD <b>Cedar Lake Yeso</b>	CO/ST <b>Eddy Co., New Mexico</b>
Location: Unit F, Sec 14, 2195' FNL, 2215' FWL, T17S R30E		
<input type="checkbox"/> PRESENT COMPLETION	<input checked="" type="checkbox"/> RECOMMENDED COMPLETION	API # 30-015-33125
<b>PERMANENT WELL BORE DATA</b>		<b>DATA ON THIS COMPLETION</b>



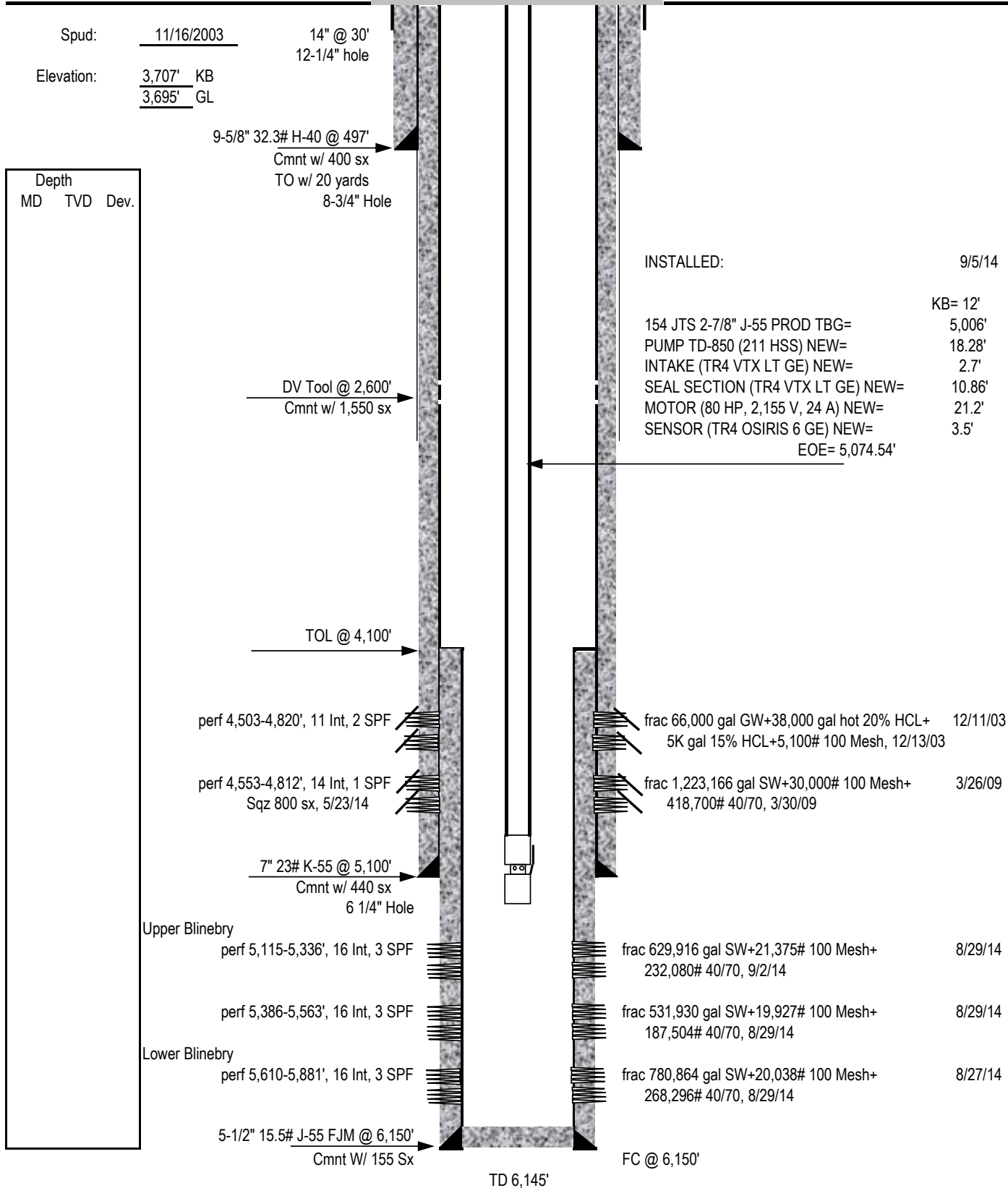


Burnett Oil Co., Inc.

**WELL COMPLETION SKETCH**

Date: 7/21/2017

WELL <b>Gissler B 33</b>	FIELD <b>Cedar Lake Yeso</b>	CO/ST <b>Eddy Co., New Mexico</b>
Location: Unit F, Sec 14, 2195' FNL, 2215' FWL, T17S R30E		
<input type="checkbox"/> PRESENT COMPLETION	<input type="checkbox"/> RECOMMENDED COMPLETION	API # 30-015-33125
<b>PERMANENT WELL BORE DATA</b>		<b>DATA ON THIS COMPLETION</b>





State of New Mexico  
Energy, Minerals and Natural Resources Department

Submit Electronically  
Via E-permitting

Oil Conservation Division  
1220 South St. Francis Dr.  
Santa Fe, NM 87505

## NATURAL GAS MANAGEMENT PLAN

This Natural Gas Management Plan must be submitted with each Application for Permit to Drill (APD) for a new or recompleted well.

### **Section 1 – Plan Description**

**Effective May 25, 2021**

**I. Operator:** Burnett Oil Co., Inc. **OGRID:** 03080 **Date:** 8/12/2025

**II. Type:** ☒ Original ☐ Amendment due to ☐ 19.15.27.9.D(6)(a) NMAC ☐ 19.15.27.9.D(6)(b) NMAC ☒ Other.

If Other, please describe: R e c o m p l e t i o n .

**III. Well(s):** Provide the following information for each new or recompleted well or set of wells proposed to be drilled or proposed to be recompleted from a single well pad or connected to a central delivery point.

Well Name	API	ULSTR	Footages	Anticipat ed Oil BBL/D	Anticipated Gas MCF/D	Anticipated Produced Water BBL/D
Gissler B #32	30-015-32754	L-14-17S-30E	2310' FSL 330' FWL	150	250	800
Gissler B #33	30-015-33125	F-14-17S-30E	2195' FNL 2215' FWL	150	250	800
Gissler B #38	30-015-34359	C-14-17S-30E	750' FNL 2310' FWL	130	150	500

**IV. Central Delivery Point Name:** Gissler B 3-3 Battery [See 19.15.27.9(D)(1) NMAC]

**V. Anticipated Schedule:** Provide the following information for each new or recompleted well or set of wells proposed to be drilled or proposed to be recompleted from a single well pad or connected to a central delivery point.

Well Name	API	Spud Date	TD Reached Date	Completion Commencement Date	Initial Flow Back Date	First Production Date
Gissler B #32	30-015-32754	TBD	TBD	TBD	TBD	TBD
Gissler B #33	30-015-33125	TBD	TBD	TBD	TBD	TBD
Gissler B #38	30-015-34359	TBD	TBD	TBD	TBD	TBD

**VI. Separation Equipment:** ☒ Attach a complete description of how Operator will size separation equipment to optimize gas capture.

**VII. Operational Practices:** ☒ Attach a complete description of the actions Operator will take to comply with the requirements of Subsection A through F of 19.15.27.8 NMAC.

**VIII. Best Management Practices:** ☒ Attach a complete description of Operator's best management practices to minimize venting during active and planned maintenance.

## **Section 2 – Enhanced Plan**

### **EFFECTIVE APRIL 1, 2022**

Beginning April 1, 2022, an operator that is not in compliance with its statewide natural gas capture requirement for the applicable reporting area must complete this section.

☒ Operator certifies that it is not required to complete this section because Operator is in compliance with its statewide natural gas capture requirement for the applicable reporting area.

#### **IX. Anticipated Natural Gas Production:**

Well	API	Anticipated Average Natural Gas Rate MCF/D	Anticipated Volume of Natural Gas for the First Year MCF

#### **X. Natural Gas Gathering System (NGGS):**

Operator	System	ULSTR of Tie-in	Anticipated Gathering Start Date	Available Maximum Daily Capacity of System Segment Tie-in

**XI. Map.** ☐ Attach an accurate and legible map depicting the location of the well(s), the anticipated pipeline route(s) connecting the production operations to the existing or planned interconnect of the natural gas gathering system(s), and the maximum daily capacity of the segment or portion of the natural gas gathering system(s) to which the well(s) will be connected.

**XII. Line Capacity.** The natural gas gathering system ☐ will ☐ will not have capacity to gather 100% of the anticipated natural gas production volume from the well prior to the date of first production.

**XIII. Line Pressure.** Operator ☐ does ☐ does not anticipate that its existing well(s) connected to the same segment, or portion, of the natural gas gathering system(s) described above will continue to meet anticipated increases in line pressure caused by the new well(s).

☐ Attach Operator's plan to manage production in response to the increased line pressure.

**XIV. Confidentiality:** ☐ Operator asserts confidentiality pursuant to Section 71-2-8 NMSA 1978 for the information provided in Section 2 as provided in Paragraph (2) of Subsection D of 19.15.27.9 NMAC, and attaches a full description of the specific information for which confidentiality is asserted and the basis for such assertion.

**Section 3 - Certifications****Effective May 25, 2021**

Operator certifies that, after reasonable inquiry and based on the available information at the time of submittal:

☒ Operator will be able to connect the well(s) to a natural gas gathering system in the general area with sufficient capacity to transport one hundred percent of the anticipated volume of natural gas produced from the well(s) commencing on the date of first production, taking into account the current and anticipated volumes of produced natural gas from other wells connected to the pipeline gathering system; or

☐ Operator will not be able to connect to a natural gas gathering system in the general area with sufficient capacity to transport one hundred percent of the anticipated volume of natural gas produced from the well(s) commencing on the date of first production, taking into account the current and anticipated volumes of produced natural gas from other wells connected to the pipeline gathering system.

***If Operator checks this box, Operator will select one of the following:***

**Well Shut-In.** ☐ Operator will shut-in and not produce the well until it submits the certification required by Paragraph (4) of Subsection D of 19.15.27.9 NMAC; or

**Venting and Flaring Plan.** ☐ Operator has attached a venting and flaring plan that evaluates and selects one or more of the potential alternative beneficial uses for the natural gas until a natural gas gathering system is available, including:

- (a) power generation on lease;
- (b) power generation for grid;
- (c) compression on lease;
- (d) liquids removal on lease;
- (e) reinjection for underground storage;
- (f) reinjection for temporary storage;
- (g) reinjection for enhanced oil recovery;
- (h) fuel cell production; and
- (i) other alternative beneficial uses approved by the division.

**Section 4 - Notices**

1. If, at any time after Operator submits this Natural Gas Management Plan and before the well is spud:

(a) Operator becomes aware that the natural gas gathering system it planned to connect the well(s) to has become unavailable or will not have capacity to transport one hundred percent of the production from the well(s), no later than 20 days after becoming aware of such information, Operator shall submit for OCD's approval a new or revised venting and flaring plan containing the information specified in Paragraph (5) of Subsection D of 19.15.27.9 NMAC; or

(b) Operator becomes aware that it has, cumulatively for the year, become out of compliance with its baseline natural gas capture rate or natural gas capture requirement, no later than 20 days after becoming aware of such information, Operator shall submit for OCD's approval a new or revised Natural Gas Management Plan for each well it plans to spud during the next 90 days containing the information specified in Paragraph (2) of Subsection D of 19.15.27.9 NMAC, and shall file an update for each Natural Gas Management Plan until Operator is back in compliance with its baseline natural gas capture rate or natural gas capture requirement.

2. OCD may deny or conditionally approve an APD if Operator does not make a certification, fails to submit an adequate venting and flaring plan which includes alternative beneficial uses for the anticipated volume of natural gas produced, or if OCD determines that Operator will not have adequate natural gas takeaway capacity at the time a well will be spud.

I certify that, after reasonable inquiry, the statements in and attached to this Natural Gas Management Plan are true and correct to the best of my knowledge and acknowledge that a false statement may be subject to civil and criminal penalties under the Oil and Gas Act.

Signature: *Randy Bolles*

Printed Name: Randy Bolles

Title: Regulatory Consultant

E-mail Address: rbolles@cox.net

Date: 08/12/2025

Phone: 405-738-0183

**OIL CONSERVATION DMSION**  
**(Only applicable when submitted as a standalone form)**

Approved By:

Title:

Approval Date:

Conditions of Approval:

## NATURAL GAS MANAGEMENT PLAN

### Section 1 – Attachments

Company: Burnett Oil Co., Inc. Well Name: Gissler B #32 API 30-015-32754

**VI. Separation Equipment:** Description of how Operator will size separation equipment to optimize gas capture.

- A. This well will be added to an existing tank battery.
- B. The engineered system is designed to handle 3800 MCF/D. It will produce through the following vessels:
  - 1. 2-phase separator,
  - 2. free-water knockout,
  - 3. heater treater, and then finally a
  - 4. 2-phase gas scrubber.
- C. Current battery throughput is 860 MCF/D.
- D. The referenced well is anticipated to produce a maximum of 250 MCF/D for a total throughput of 1 1 1 0 MCF/D.

**VII. Operational Practices:** Description of the actions Operator will take to comply with the requirements of Subsection A through F of 19.15.27.8 NMAC.

- A. In all circumstances, the operator shall flare rather than vent natural gas except when flaring is technically infeasible or would pose a risk to safe operations or personnel safety, and venting is a safer alternative than flaring.
- B. During drilling operations a mud/gas separator will be on location. If needed, it will be utilized to capture natural gas for purposes of flaring. If flaring is required, a properly-sized flare stack will be at a minimum of 100' from the nearest surface hole location unless otherwise approved by the division.
- C. Venting and flaring during completion or recompletion operations
  - 1. During completion or recompletion, gas is trapped/retained in the wellbore through use of properly weighted "kill" fluids.
  - 2. During the completion phase, the well will be routed directly into an existing battery. With this initial flowback already being connected to the existing battery, all flowback gasses will be routed, if applicable, only to flare. No venting will occur during this initial flowback period. As soon as it is feasible, the existing separation will be utilized.
- D. Equipment redundancies within the system, along with the overall battery design, enables us to service equipment without interruption to gas flow in most scenarios. With the existing battery compression at this

facility, in most cases we can avoid flaring during times of elevated transmission line pressures caused by mid-stream maintenance. Additionally, we have gas takeaway with two (2) midstream companies to try and keep gas going to sales in case one of them has a problem.

E. Performance Standards

1. The existing facility is designed for maximum anticipated throughput and pressure to minimize waste.
2. The existing storage tanks are routed to a combustor.
3. The existing flare stack is properly sized and designed to ensure proper combustion efficiency.
4. The existing flare stack is securely anchored and located at least 100 feet from the storage tanks.
5. AVO inspections are conducted weekly.
6. NA
7. NA
8. We strive to minimize waste and shall resolve emergencies as quickly and safely as possible.

F. Measurement or estimation of vented and flared natural gas

1. We shall measure or estimate the volume of natural gas that is vented, flared, or beneficially used during drilling, completion and production operations regardless of the reason or authorization for such venting or flaring.
2. The existing flare has a meter to measure the gas going to it.
3. The measurement equipment conforms to an industry standard such as American Petroleum Institute (API) Manual of Petroleum Measurement Standards (MPMS) Chapter 14.10 Measurement of Flow to Flares
4. The measuring equipment is not equipped with a manifold that allows the diversion of natural gas around the metering element except for the sole purpose of inspecting and servicing the measurement equipment.
5. If metering is not practicable due to circumstances such as low flow rate or low pressure venting and flaring, the operator will estimate the volume of vented or flared natural gas using a methodology that can be independently verified.
6. NA
7. The operator shall install measuring equipment whenever the division determines that metering is practicable or the existing measuring equipment or GOR test is not sufficient to measure the volume of vented and flared natural gas.

**VIII. Best Management Practices:** Operator's best management practices to minimize venting during active and planned maintenance.

- A. The existing facility is designed for maximum anticipated throughput and pressure to minimize waste.
- B. Equipment redundancies within the system, along with the overall battery design, enables us to service equipment without interruption to gas flow in most scenarios. With the existing battery compression at this facility, in most cases we can avoid flaring during times of elevated transmission line pressures caused by mid-stream maintenance.
- C. During well maintenance, gas is trapped/retained in the wellbore through use of properly weighted "kill" fluids.
- D. Additionally, we have gas takeaway with two (2) midstream companies to try and keep gas going to sales in case one of them has a problem.

**BUREAU OF LAND MANAGEMENT**  
**Carlsbad Field Office**  
**620 East Greene Street**  
**Carlsbad, New Mexico 88220**  
**575-234-5972**

**Conditions of Approval for Permanent Abandonment of a Production Zone**

Failure to comply with the following Conditions of Approval may result in a Notice of Incidents of Noncompliance (INC) in accordance with 43 CFR 3163.1.

1. Plugging operations shall commence within ninety (90) days from the approval date of this Notice of Intent to Plug Back.

**If you are unable to plug the well by the 90<sup>th</sup> day provide this office, prior to the 90<sup>th</sup> day, with the reason for not meeting the deadline and a date when we can expect the completed interval to be plugged. Failure to do so will result in enforcement action.**

**The rig used for the plugging procedure cannot be released and moved off without the prior approval of the authorized officer. Failure to do so may result in enforcement action.**

2. Notification: Contact the appropriate BLM office at least 24 hours prior to the commencing of any plug back operations. For wells in Chaves and Roosevelt County, call 575-627-0272; Eddy County, call 575-361-2822; Lea County, call 575-689-5981
3. Blowout Preventers: A blowout preventer (BOP), as appropriate, shall be installed before commencing any plugging operation. The BOP must be installed and maintained as per API and manufacturer recommendations. The minimum BOP requirement is a 2M system for a well not deeper than 9,100 feet, a 3M system for a well not deeper than 13,600 feet, or a 5M system for a well not deeper than 22,700 feet (all depths are for measured well depth).
4. Mud Requirement: Mud shall be placed between all plugs. Minimum consistency of plugging mud shall be obtained by mixing at the rate of 25 sacks (50 pounds each) of gel per 100 barrels of brine water. Minimum nine (9) pounds per gallon.
5. Cement Requirement: Sufficient cement shall be used to bring any required plug to the specified depth and length. Any given cement volumes on the proposed plugging procedure are merely estimates and are not final. Unless specific approval is received, no plug except the surface plug shall be less than 25 sacks of cement. Any plug that requires a tag will have a minimum WOC time of 4 hours.

In lieu of a cement plug across perforations in a cased hole (not for any other plugs), a bridge plug set within 50 feet to 100 feet above the perforations shall be capped with 25 sacks of cement. If a bailer is used to cap this plug, 35 feet of cement shall be sufficient. **Before pumping or bailing cement on top of CIBP, tag will be required to verify depth. Based on depth, a tag of the cement may be deemed necessary.**

Unless otherwise specified in the approved procedure, the cement plug shall consist of either Neat Class "C", for up to 7,500 feet of depth or Neat Class "H", for deeper than 7,500 feet plugs.



6. Casing Integrity Test: The casing shall be filled with corrosion inhibited fluid above the CIBP and pressure tested to 1000 psi surface pressure with a pressure drop not more than 10 percent over 15-minute period. If the well does not pass the casing integrity test, then the operator shall either repair the casing and re-test or within 30 days submit a procedure to plug and abandon the well.
7. Subsequent Plug back Reporting: Within 30 days after plug back work is completed, file a Subsequent Report (Form 3160-5) or via the AFMSS 2 WISx Module to BLM. The report should give in detail the manner in which the plug back work was carried out, the extent (by depths) of cement plugs placed, and the size and location (by depths) of casing left in the well. Show date zone was plugged. After plugging back to a new zone submit a Completion Report (Form 3160-4) or via the AFMSS 2 WISx Module with the Subsequent Report. The plugged zone shall be in plug back status.

Include the following information:

- a. A well bore diagram with all perforations, CIBP's, and tops of cement on CIBP's.
  - b. A description of the plug back procedure.
  - c. A clear copy or the original of the pressure test chart.
  - d. A copy of any logs ran.
8. Trash: All trash, junk and other waste material shall be contained in trash cages or bins to prevent scattering and will be removed and deposited in an approved sanitary landfill. Burial on site is not permitted.
  9. If well location is within the Timing Limitation Stipulation Area for Lesser Prairie-Chicken:  
From March 1<sup>st</sup> through June 15<sup>th</sup> annually, abandonment activities will be allowed except between the hours from 3:00 am and 9:00 am. Normal vehicle use on existing roads will not be restricted.

Sante Fe Main Office  
Phone: (505) 476-3441

General Information  
Phone: (505) 629-6116

Online Phone Directory  
<https://www.emnrd.nm.gov/ocd/contact-us>

**State of New Mexico**  
**Energy, Minerals and Natural Resources**  
**Oil Conservation Division**  
**1220 S. St Francis Dr.**  
**Santa Fe, NM 87505**

CONDITIONS

Action 503521

**CONDITIONS**

Operator: BURNETT OIL CO INC 801 Cherry Street Unit #9 Fort Worth, TX 76102	OGRID: 3080
	Action Number: 503521
	Action Type: [C-103] NOI Recompletion (C-103E)

**CONDITIONS**

Created By	Condition	Condition Date
ward.rikala	Notify the OCD inspection supervisor via email 24 Hours Prior to beginning operations.	9/9/2025
ward.rikala	All conducted logs shall be submitted to the OCD as a [UF-WL] EP Well Log Submission (WellLog).	9/9/2025
ward.rikala	If Cement is not adequate to protect casing and isolate strata: (a) the uppermost perforation in each additional pool to at least 150 feet above that perforation; and (b) the lowermost perforation in each added pool to at least 100 feet below that perforation, the appropriate Inspection supervisor shall be consulted and remedial action conducted as directed.	9/9/2025
ward.rikala	A C-104 packet is required if, a pool is added, or perforations are added above or below existing perms.	9/9/2025
ward.rikala	CIBP must be set within 100' of top perf at +/- 5120". Dump bail 35' cement on top and then tag.	9/9/2025
ward.rikala	Casing pressure test must be held for minimum 30 minutes and shall flatline.	9/9/2025