

Santa Fe Main Office  
Phone: (505) 476-3441  
General Information  
Phone: (505) 629-6116

Online Phone Directory Visit:  
<https://www.emnrd.nm.gov/ocd/contact-us/>

State of New Mexico  
Energy, Minerals and Natural Resources

OIL CONSERVATION DIVISION  
1220 South St. Francis Dr.  
Santa Fe, NM 87505

Form C-103  
Revised July 18, 2013

|                                                                                                                                                                                                                         |  |                                                                                                     |
|-------------------------------------------------------------------------------------------------------------------------------------------------------------------------------------------------------------------------|--|-----------------------------------------------------------------------------------------------------|
| <b>SUNDRY NOTICES AND REPORTS ON WELLS</b><br>(DO NOT USE THIS FORM FOR PROPOSALS TO DRILL OR TO DEEPEN OR PLUG BACK TO A DIFFERENT RESERVOIR. USE "APPLICATION FOR PERMIT" (FORM C-101) FOR SUCH PROPOSALS.)           |  | WELL API NO.<br>30-005-62686                                                                        |
| 1. Type of Well: Oil Well <input checked="" type="checkbox"/> Gas Well <input type="checkbox"/> Other <input type="checkbox"/>                                                                                          |  | 5. Indicate Type of Lease<br>STATE <input checked="" type="checkbox"/> FEE <input type="checkbox"/> |
| 2. Name of Operator<br>The Eastland Oil Company                                                                                                                                                                         |  | 6. State Oil & Gas Lease No.<br>L06773-000                                                          |
| 3. Address of Operator<br>PO Box 3488 Midland, TX 79702-3488                                                                                                                                                            |  | 7. Lease Name or Unit Agreement Name<br>Eastland State                                              |
| 4. Well Location<br>Unit Letter <u>D</u> : <u>660</u> feet from the <u>North</u> line and <u>660</u> feet from the <u>West</u> line<br>Section <u>13</u> Township <u>09S</u> Range <u>26E</u> NMPM <u>Chaves</u> County |  | 8. Well Number <u>4</u>                                                                             |
| 11. Elevation (Show whether DR, RKB, RT, GR, etc.)                                                                                                                                                                      |  | 9. OGRID Number<br>22767                                                                            |
|                                                                                                                                                                                                                         |  | 10. Pool name or Wildcat<br>Foor Ranch; Pre Permian                                                 |

12. Check Appropriate Box to Indicate Nature of Notice, Report or Other Data

NOTICE OF INTENTION TO:

PERFORM REMEDIAL WORK ☐ PLUG AND ABANDON ☐  
 TEMPORARILY ABANDON ☐ CHANGE PLANS ☐  
 PULL OR ALTER CASING ☐ MULTIPLE COMPL ☐  
 DOWNHOLE COMMINGLE ☐  
 CLOSED-LOOP SYSTEM ☐  
 OTHER: ☐

SUBSEQUENT REPORT OF:

REMEDIAL WORK ☐ ALTERING CASING ☐  
 COMMENCE DRILLING OPNS. ☐ P AND A ☒  
 CASING/CEMENT JOB ☐  
 OTHER: ☐

13. Describe proposed or completed operations. (Clearly state all pertinent details, and give pertinent dates, including estimated date of starting any proposed work). SEE RULE 19.15.7.14 NMAC. For Multiple Completions: Attach wellbore diagram of proposed completion or recompletion.

Please see attached plugging report.

Spud Date:

Rig Release Date:

I hereby certify that the information above is true and complete to the best of my knowledge and belief.

SIGNATURE Garrett Donnelly TITLE Vice-President DATE 9/19/2025

Type or print name Garrett Donnelly E-mail address: gdonnelly@eastlandoil.com PHONE: (432)683-6293

**For State Use Only**

APPROVED BY: \_\_\_\_\_ TITLE \_\_\_\_\_ DATE \_\_\_\_\_

Conditions of Approval (if any):







## THE EASTLAND OIL COMPANY

## Daily Report of Operations

P&amp;A

Well Name: EASTLAND ST. #4

Field Name:

API# 30-005-62686

Current Zone of Interest:

Date: 7/22/2025

Supervisor: Jack Gustamantes

P&amp;A GPS: 33.538153, -104.256952

Producing Zone

| Detailed Description of Day's Operation |                                                                                                                                                                                                                                                       |
|-----------------------------------------|-------------------------------------------------------------------------------------------------------------------------------------------------------------------------------------------------------------------------------------------------------|
| 7/22/25                                 | Started moving equipment to location.                                                                                                                                                                                                                 |
| 7/23/25                                 | Finished moving equipment to location, rigged up pulling unit,                                                                                                                                                                                        |
| 7/24/25                                 | Killed well, pulled tubing, ran 1st CIBP to 5230, set it. Will pump 25sx cement on plug in the morning.                                                                                                                                               |
| 7/25/25                                 | Tagged 1st CIBP @ 5230' pumped 25sx cement, WOC 6 hrs, tagged @ 4973', ran 2nd CIBP to 4775' set it.<br>Tested casing to 500 PSI for 30 minutes.                                                                                                      |
| 7/28/25                                 | Went in hole w/wireline tagged CIBP @ 4784', did CBL to surface, emailed results. Went in hole w/tubing tagged @ 4784', pumped 25sx on top of CIBP, will tag in the morning.                                                                          |
| 7/29/25                                 | Tagged cement w/tubing @ 4560', mixed & pumped 80 bbls MLF to cover between 3 plugs, set tubing @ 3100' pumped 25 sx plug, perforated @ 1407', ran packer to 576', then mixed & pumped 110 sx cement, displaced 13 1/2 bbls down to 1050'.            |
| 7/30/25                                 | Tagged shoe plug @ 1067', mixed 20 bbls MLF to cover between top 2 plugs, perforated @ 250', mixed & pumped 70 sx cement circulated cement through perfs @ 250' and filled between 8 5/8 & 5 1/2 and also inside 5 1/2. Circulated 5 sx to steel pit. |
| 8/1/25                                  | Cement down 1' from top of wellhead, did cutoff will install dry hole marker later.                                                                                                                                                                   |
| 8/3/25                                  | Welded top plate & dryhole marker.                                                                                                                                                                                                                    |

Service Rig: 3 G WELL SERVICE

Prepared by: Jack 3G 575 420 8547

Prepared for: YESENIA RUBIO 432-312-3502 423-683-6293

GARRETT DONNELLY 432-559-3684 432-683-6293

Post P&A Wellbore Diagram

Operatoo: The Eastland Oil Company

Well Name: Eastland State #4

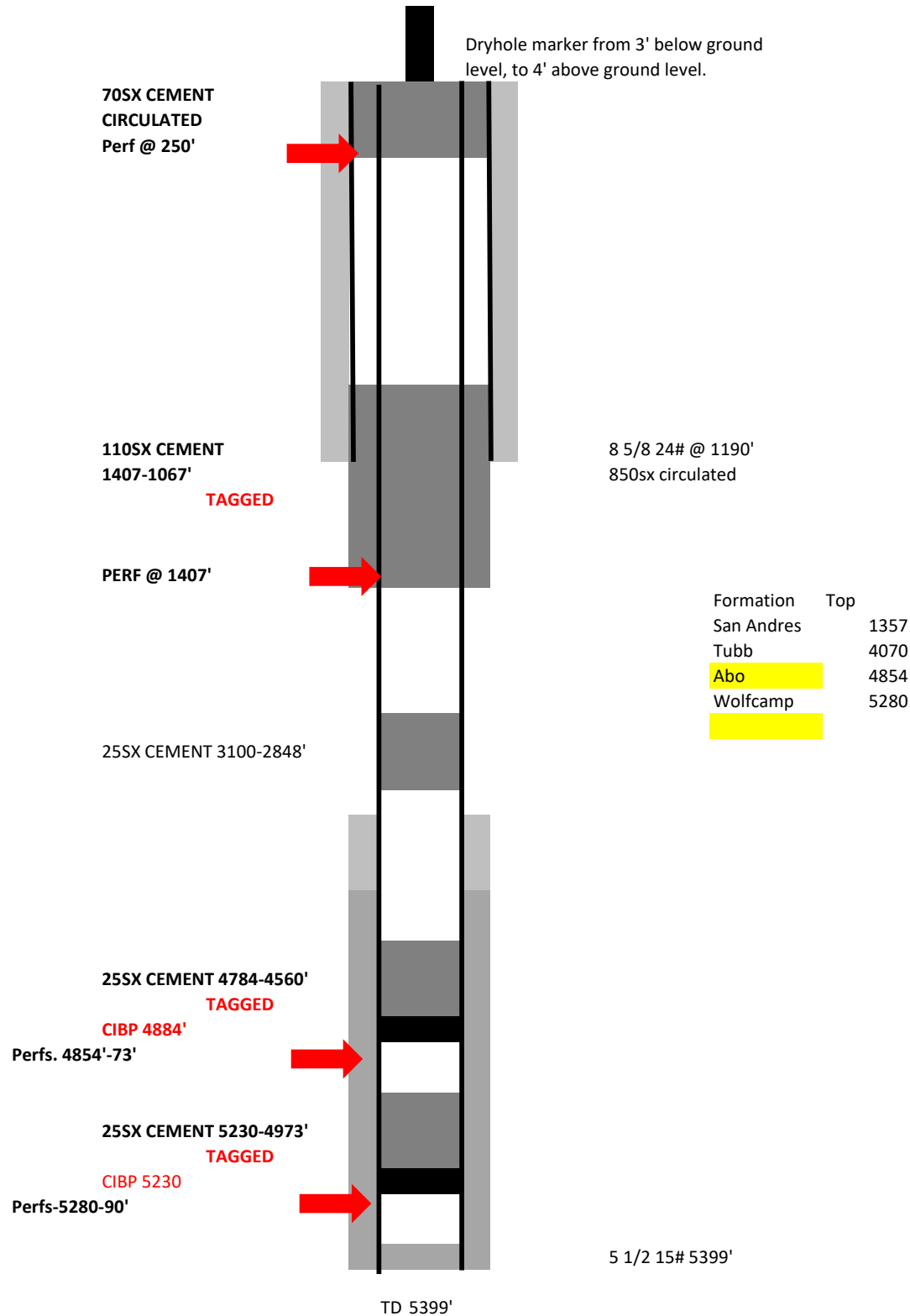
API #: 30-005-62686

Location: S13, T9S, R26E, Chaves County, NM

Date Spud:

Date Complete:

P&A GPS: 33.538153, -104.256952



Sante Fe Main Office  
Phone: (505) 476-3441

General Information  
Phone: (505) 629-6116

Online Phone Directory  
<https://www.emnrd.nm.gov/ocd/contact-us>

State of New Mexico  
Energy, Minerals and Natural Resources  
Oil Conservation Division  
1220 S. St Francis Dr.  
Santa Fe, NM 87505

CONDITIONS

Action 507577

CONDITIONS

|                                                                    |                                                |
|--------------------------------------------------------------------|------------------------------------------------|
| Operator:<br>EASTLAND OIL CO<br>P.O. Box 3488<br>Midland, TX 79702 | OGRID:<br>22767                                |
|                                                                    | Action Number:<br>507577                       |
|                                                                    | Action Type:<br>[C-103] Sub. Plugging (C-103P) |

CONDITIONS

| Created By  | Condition | Condition Date |
|-------------|-----------|----------------|
| loren.diede | None      | 9/22/2025      |